



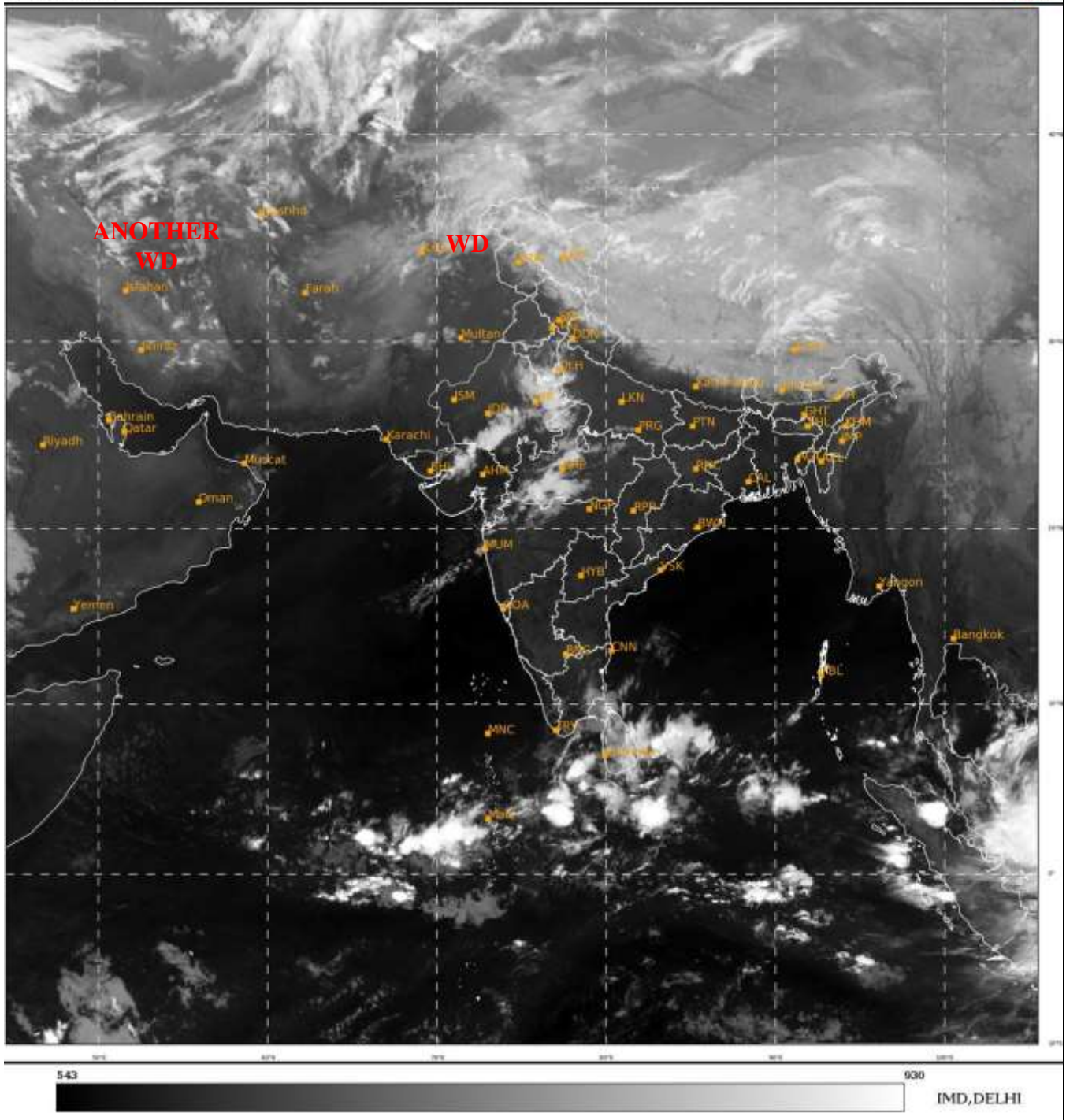
भारत मौसम विज्ञान विभाग  
पृथ्वी विज्ञान मंत्रालय  
India Meteorological Department  
Ministry of Earth Sciences



**SATELLITE BULLETIN BASED ON SATELLITE  
IMAGERIES AND PRODUCTS**  
**04.03.2023 TIME 2100 UTC**

SAT : INSAT-3D IMG  
IMG\_TIR1 10.8 um  
LIC Mercator

04-03-2023/(2100 to 2126) GMT  
05-03-2023/(0230 to 0256) IST



TCIN50 DEMS 042100

SATELLITE BULLETIN BASED ON INSAT-3D PIC OF 042100 UTC (.)

REGION COVERED BETWEEN LAT 50.0°N TO 35.0°S AND LONG 40.0°E TO 125.0°E (.)

**SALIENT FEATURES:-**

**WESTERN DISTURBANCE (WD):-**

SCT MULTILAYERED CLOUDS OVER AFGAN PAK LADAKH J&K HP PJB RAJ N GUJ MP HARY  
DLH W UP UTRKND NEPAL TIBET ADJ CHINA IN ASSW **WD** OVER THE AREA (.)

SCT MULTILAYERED CLOUDS OVER IRAN AND N/HOOD IN ASSW **ANOTHER WD** OVER THE  
AREA (.)





INSAT-3D 04-MAR-2023 22:00 WV IMG

WATER VAPOUR WIND

(1 Kt = 0.5 m/s)

10 Kt

15 Kt

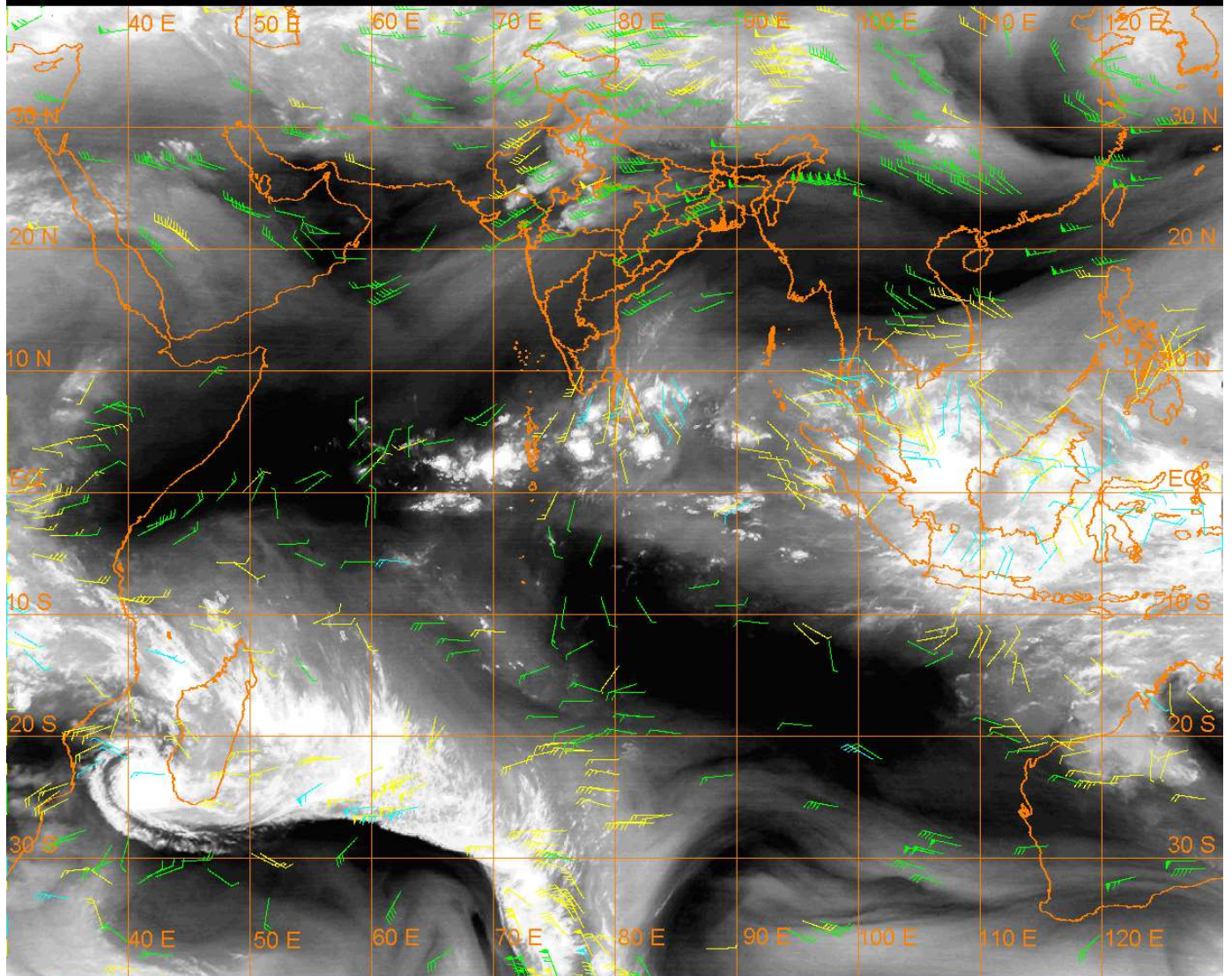
20 Kt

50 Kt

100-250 hPa

251-350 hPa

351-500 hPa



#### **CLOUDS DESCRIPTION WITHIN INDIA:-**

##### **NORTH:-**

SCT LOW/MED CLOUDS WITH EMBDD WK TO MOD CONVTN OVER LADAKH J&K N HP N UTRKND E HARY DLH W UP (.) SCT LOW/MED CLOUDS OVER S HP S UTRKND E PJB (.)

##### **EAST:-**

SCT LOW/MED CLOUDS WITH EMBDD WK TO MOD CONVTN OVER SKM ARUPR NE ASSAM (.) ISOL TO SCT LOW/MED CLOUDS OVER MEGHA REST ASSAM NAGA MANI (.)

##### **WEST:-**

SCT LOW/MED CLOUDS WITH EMBDD MOD TO INT CONVTN OVER E RAJ NW GUJ (.) SCT LOW/MED CLOUDS WITH EMBDD WK TO MOD CONVTN OVER MP NORTH MADHYA MAHA NW VID (.) ISOL TO SCT LOW/MED CLOUDS OVER S GUJ REST MAHA (.)

##### **SOUTH:-**

SCT LOW/MED CLOUDS WITH EMBDD ISOL WK CONVTN OVER COTL TN (.) ISOL TO SCT LOW/MED CLOUDS OVER KER REST TN ANDAMAN ILS (.)

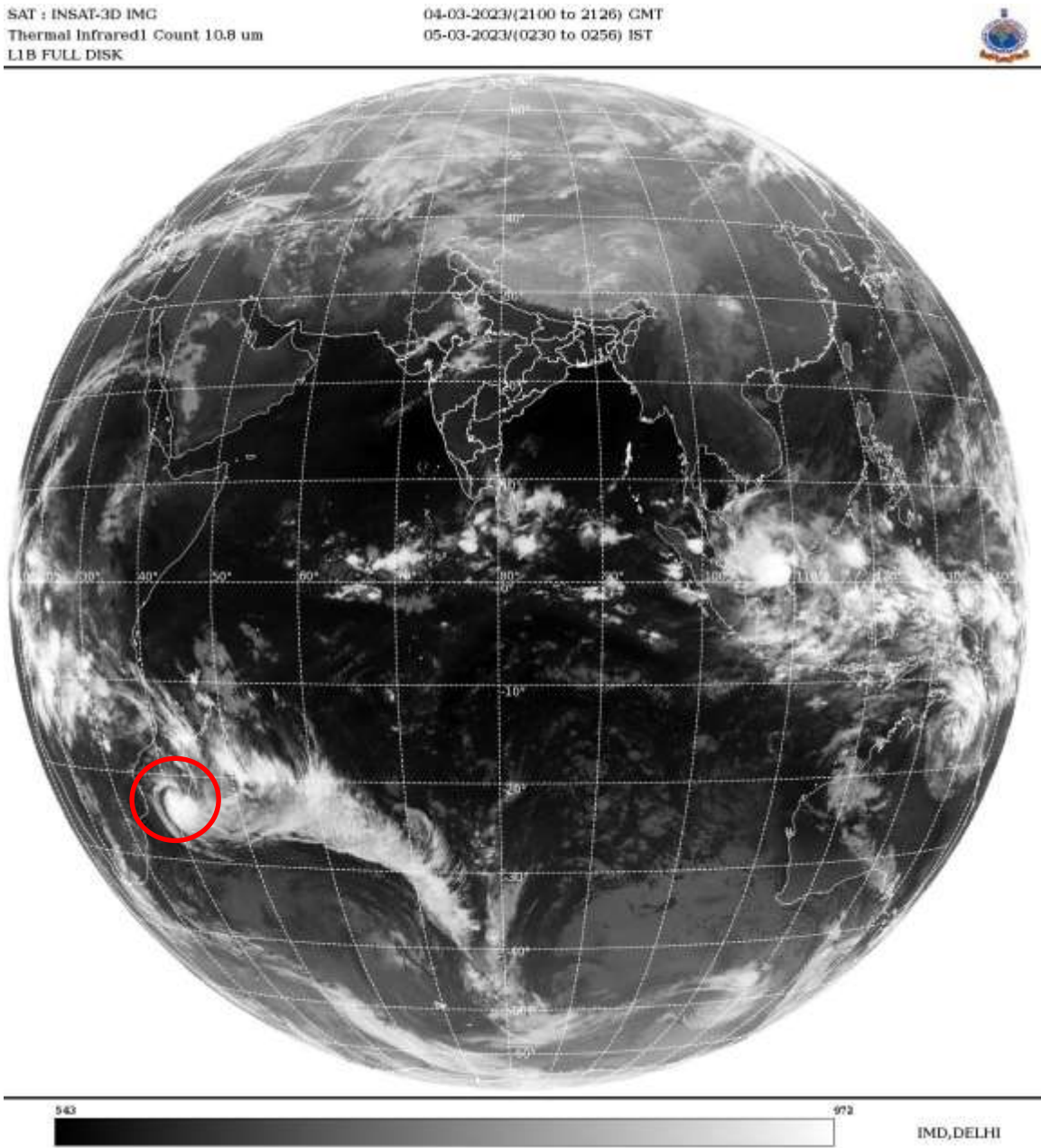
##### **ARABIAN SEA:-**

SCT LOW/MED CLOUDS WITH EMBDD MOD TO INT CONVTN OVER COMORIN AREA (.) SCT LOW/MED CLOUDS WITH EMBDD WK CONVTN OVER EC ARSEA (.) SCT LOW/MED CLOUDS OVER REST ARSEA (.)

##### **BAY OF BENGAL & ANDAMAN SEA:-**

SCT LOW/MED CLOUDS WITH EMBDD MOD TO INT CONVTN OVER SOUTH BAY AND S ANDAMAN SEA (.)

**CLOUDS DESCRIPTION OUTSIDE INDIA:-**



**VORTEX (FREDDY) OVER SOUTH MOZAMBIQUE CHANNEL:-**

**VORTEX (FREDDY) OVER SOUTH MOZAMBIQUE CHANNEL (AREA D75) CENTERED NEAR 22.5S / 41.0E (.) INTENSITY T2.5/2.5 (.) CORRESPONDING MAXIMUM SUSTAINED WINDS OF 34-47 KTS (.) ASSTD BKN LOW/MED CLOUDS WITH EMBDD INT TO V INT CONVTN OVER MOZAMBIQUE CHANNEL MADAGASCAR (.)**

**SCT LOW/MED CLOUDS WITH EMBDD MOD TO INT CONVTN OVER SRI LANKA PALK STR GULF OF MANNAR MALDIVES PAK NEPAL BHUTAN TIBET CHINA EXT S THAILAND GULF OF THAILAND S VIETNAM SUMATRA STR OF MALACCA MALAYSIA BORNEO SOUTH CHINA SEA JAVA ILS & SEA CELEBES ILS & SEA S PHILIPPINES SULU SEA MADAGASCAR MOZAMBIQUE CHANNEL AND OVER INDIAN OCEAN BET LAT 5.0N TO 30.0S LONG 40.0E TO 80.0E AND BET LAT 5.0N TO 10.0S LONG 80.0E TO 110.0E (.)**

**TOO 05/0455 HRS IST=**

**NNNN**



LEGEND:-

|        |       |   |
|--------|-------|---|
| REGION | NORTH | J&K HP PJB HARY DLH UP UTRKND                     |
|        | EAST  | BHR JHRKND CHTGH OR WB SKM NORTH- EAST STATES     |
|        | WEST  | RAJ MP GUJ MAHA GOA                               |
|        | SOUTH | TLNGN AP KRNTK KER TN LKSDP ANDAMAN & NICOBAR ILS |

|   |              |  |
|---|--------------|--|
| CLOUD DISTRIBUTION  | ISOL         | ISOLATED (LESS THAN 25%)                         |
|   | SCT          | SCATTERED (25 TO 50%)                            |
|   | BKN          | BROKEN (51 TO 75%)                               |
|   | SLD          | SOLID (GREATER THAN 75%)                         |
| CLOUDS TOP TEMPERATURE                                    | CTT          | CLOUD TOP TEMPERATURE                            |
| CONVECTION  | WK CONVTN    | WEAK CONVECTION (CTT GREATER THAN -25°C)         |
|   | MOD CONVTN   | MODERATE CONVECTION (CTT BETWEEN -25°C TO -40°C) |
|   | INT CONVTN   | INTENSE CONVECTION (CTT BETWEEN -41°C TO -70°C)  |
|   | V INT CONVTN | VERY INTENSE CONVECTION (CTT LESS THAN -70°C)    |
| METEOROLOGICAL SUB- DIVISIONS, STATES & UNION TERRITORIES | ARUPR        | ARUNACHAL PRADESH                                |
|   | BHR          | BIHAR  |
|   | CHTGH        | CHHATTISGARH                                     |
|   | COTL AP      | COASTAL ANDHRA PRADESH                           |
|   | COTL KRNTK   | COASTAL KARNATAKA                                |
|   | COTL ORS     | COASTAL ORISSA                                   |
|   | GUJ          | GUJARAT  |
|   | GWB          | GANGETIC WEST BENGAL                             |
|   | HARY         | HARYANA  |
|   | DLH          | DELHI  |
|   | HP           | HIMACHAL PRADESH                                 |
|   | J&K          | JAMMU AND KASHMIR                                |
|   | JHRKND       | JHARKHAND  |
|   | KER          | KERALA   |
|   | KKN          | KONKAN   |
|   | LKSDP        | LAKSHADWEEP                                      |
|   | M MAHA       | MADHYA MAHARASHTRA                               |
|   | MAHA         | MAHARASHTRA                                      |
|   | MANI         | MANIPUR  |
|   | MEGHA        | MEGHALAYA  |
|   | MIZO         | MIZORAM  |
|   | MP           | MADHYA PRADESH                                   |
|   | MRTHWD       | MARATHWADA                                       |
|   | NAGA         | NAGALAND   |
|   | N COTL AP    | NORTH COASTAL ANDHRA PRADESH                     |

|                      |                        |                                  |
|----------------------|------------------------|----------------------------------|
|                      | <b>NIK</b>             | <b>NORTH INTERIOR KARNATAKA</b>  |
|                      | <b>ORS</b>             | <b>ORISSA</b>                    |
|                      | <b>PJB</b>             | <b>PUNJAB</b>                    |
|                      | <b>RAJ</b>             | <b>RAJASTHAN</b>                 |
|                      | <b>RYLSM</b>           | <b>RAYALASEEMA</b>               |
|                      | <b>SAU &amp; KUTCH</b> | <b>SAURASHTRA &amp; KUTCH</b>    |
|                      | <b>SHWB</b>            | <b>SUB-HIMALAYAN WEST BENGAL</b> |
|                      | <b>SIK</b>             | <b>SOUTH INTERIOR KARNATAKA</b>  |
|                      | <b>SKM</b>             | <b>SIKKIM</b>                    |
|                      | <b>TLNGN</b>           | <b>TELANGANA</b>                 |
|                      | <b>TN</b>              | <b>TAMIL NADU</b>                |
|                      | <b>TRP</b>             | <b>TRIPURA</b>                   |
|                      | <b>UP</b>              | <b>UTTAR PRADESH</b>             |
|                      | <b>UTRKND</b>          | <b>UTTARAKHAND</b>               |
|                      | <b>VID</b>             | <b>VIDHARBHA</b>                 |
|                      | <b>SHWB</b>            | <b>SUB HIMALAYAN WEST BENGAL</b> |
|                      | <b>GWB</b>             | <b>GANGETIC WEST BENGAL</b>      |
|                      | <b>ARSEA</b>           | <b>ARABIAN SEA</b>               |
|                      | <b>ILS</b>             | <b>ISLANDS</b>                   |
| <b>MISCELLANEOUS</b> | <b>ASSW</b>            | <b>IN ASSOCIATION WITH</b>       |
|                      | <b>ASSTD</b>           | <b>ASSOCIATED</b>                |
|                      | <b>LLC</b>             | <b>LOW LEVEL CIRCULATION</b>     |
|                      | <b>EMBDD</b>           | <b>EMBEDDED</b>                  |
|                      | <b>N/HOOD</b>          | <b>NEIGHBOURHOOD</b>             |
|                      | <b>EXT</b>             | <b>EXTREME</b>                   |