



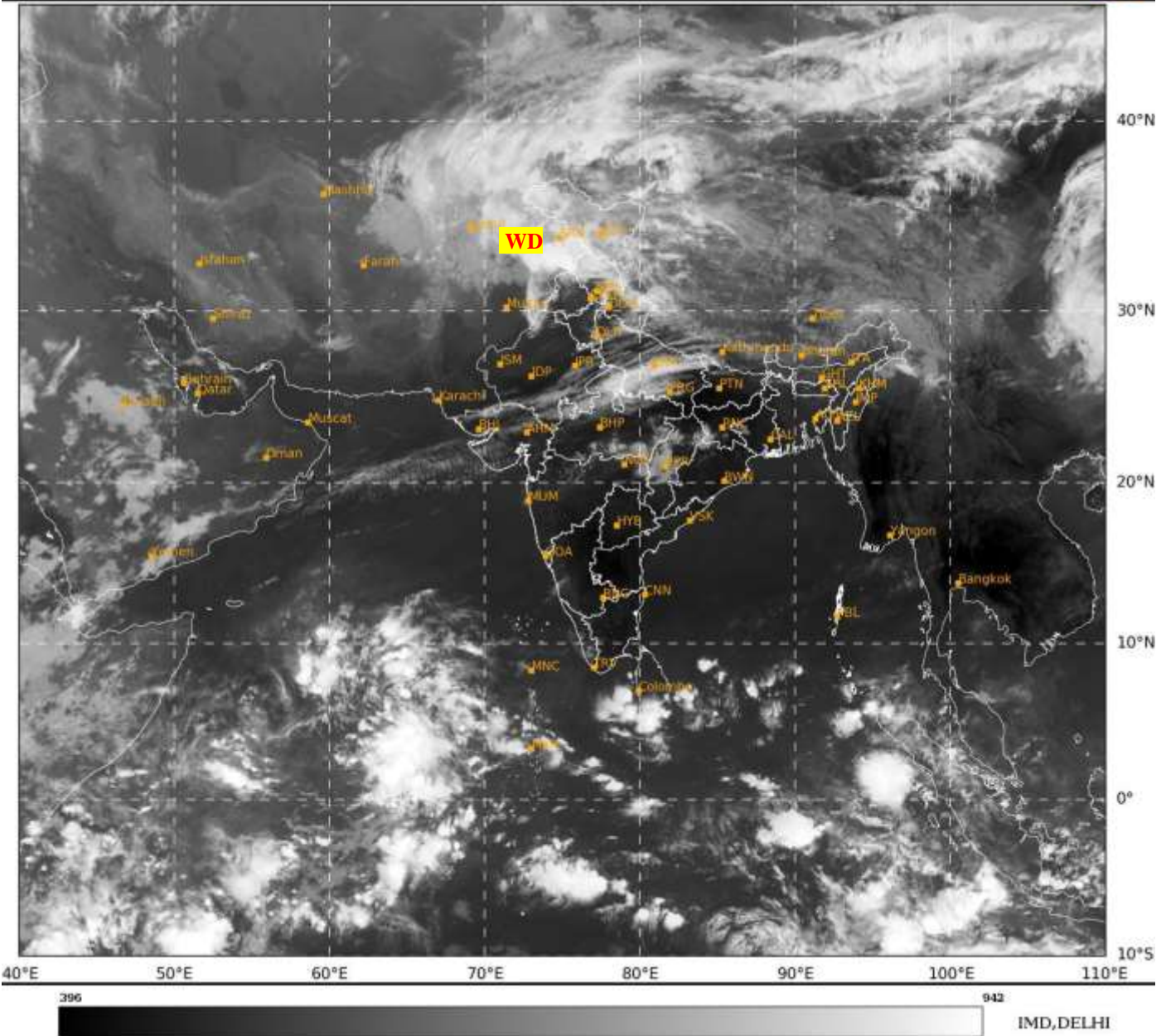
भारत मौसम विज्ञान विभाग  
पृथ्वी विज्ञान मंत्रालय  
India Meteorological Department  
Ministry of Earth Sciences



**SATELLITE BULLETIN BASED ON SATELLITE  
IMAGERIES AND PRODUCTS**  
**27.04.2024 TIME 0300 UTC**

SAT : INSAT-3D IMG  
IMG\_TIR1 10.8 um  
LIC Mercator

27-04-2024/(0230 to 0256) GMT  
27-04-2024/(0800 to 0826) IST



TCIN50 DEMS 270300

SATELLITE BULLETIN BASED ON INSAT-3D PIC OF 270300 UTC (.)

REGION COVERED BETWEEN LAT 50.0°N TO 35.0°S AND LONG 30.0°E TO 125.0°E (.)

**SALIENT FEATURES:-**

**WESTERN DISTURBANCE:-**

SCT TO BKN MULTILAYERED CLOUDS OVER AFGAN PAK LADAKH J&K HP UTRKND PJB HARY DLH RAJ UP ADJ N MP IN ASSW **WD** OVER THE AREA (.)

**CONVECTIVE / THUNDERSTORM ACTIVITY:-**

MODERATE TO INTENSE CONVECTIVE / THUNDERSTORM ACTIVITY OBSERVED OVER LADAKH J&K HP UTRKND E UP (**WITH MINIMUM CTT MINUS 55-70 DEGREE**) E UP (**WITH MINIMUM CTT MINUS 45 DEGREE**) (.)

**CLOUDS DESCRIPTION WITHIN INDIA:-**

**NORTH:-**

SCT TO BKN LOW/MED CLOUDS WITH EMBDD MOD TO INT CONVTN OVER LADAKH J&K HP N UTRKND E UP (.) SCT LOW/MED CLOUDS WITH EMBDD WK TO MOD CONVTN OVER S UTRKND W PJB SE HARY W UP (.) SCT LOW/MED CLOUDS OVER E PJB REST HARY DLH (.)

**EAST:-**

SCT LOW/MED CLOUDS WITH WK TO MOD CONVTN OVER NW BHR C&N CHTGH SW JHRKND NW ORS WC GWB SKM ARUPR (.) SCT LOW/MED CLOUDS OVER NE BHR SE JHRKND N GWB SHWB REST NE- STATES (.)

**WEST:-**

SCT LOW/MED CLOUDS WITH EMBDD MOD TO INT CONVTN OVER NW MP AND WK TO MOD CONVTN OVER NW&E RAJ REST MP NW GUJ E VID (.) SCT LOW/MED CLOUDS OVER SW RAJ REST GUJ REST MAHA (.)

**SOUTH:-**

SCT LOW/MED CLOUDS WITH EMBDD ISOL WK TO MOD CONVTN OVER S KER & NICOBAR ILS (.) SCT LOW/MED CLOUDS OVER COTL KRNTK N KER W TN & LKSDP ILS (.)

**ARABIAN SEA:-**

SCT LOW/MED CLOUDS WITH EMBDD INT TO V INT CONVTN OVER SC ARSEA ADJ EQUATORIAL INDIAN OCEAN (.) SCT LOW/MED CLOUDS WITH EMBDD ISOL MOD TO INT CONVTN OVER REST S ARSEA (.)

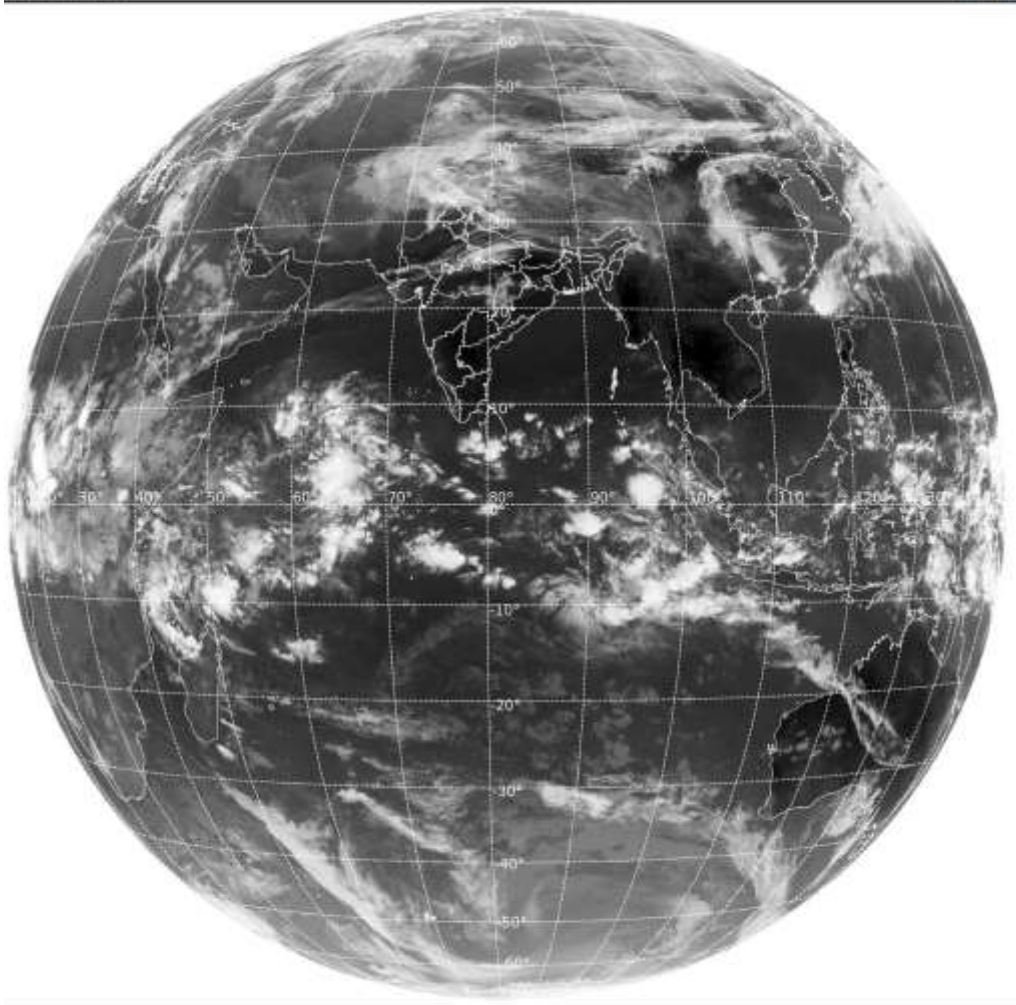
**BAY OF BENGAL & ANDAMAN SEA:-**

SCT LOW/MED CLOUDS WITH EMBDD MOD TO INT CONVTN OVER S BAY ADJ EQUATORIAL INDIAN OCEAN & S ANDAMAN SEA (.)

**CLOUDS DESCRIPTION OUTSIDE INDIA:-**

SAT : INSAT-3D IMG  
Thermal Infrared1 Count 10.8 um  
L1B FULL DISK

27-04-2024/(0230 to 0256) GMT  
27-04-2024/(0800 to 0626) IST



207

200

IMD, DELHI

SCT LOW/MED CLOUDS WITH EMBDD MOD TO INT CONVTN OVER MALDIVES PAK NEPAL TIBET CHINA N MYANMAR SUMATRA STR OF MALACCA MALAYSIA BORNEO SOUTH CHINA SEA JAVA ILS & SEA CELEBES ILS & SEA PHILIPPINES TAIWAN EAST CHINA SEA NORTH MADAGASCAR N MOZAMBIQUE CHANNEL AND OVER INDIAN OCEAN BET LAT 5.0N TO 20.0S LONG 40.0E TO 120.0E AND BET LAT 25.0S TO 35.0S LONG 40.0E TO 100.0E (.)

TOO 27/0910 HRS IST=

NNNN

**LEGEND:-**

|  |                           |  |
|--|---------------------------|--|
| <b>REGION</b>  | <b>NORTH</b>              | <b>J&amp;K HP PJB HARY DLH UP UTRKND</b>                     |
|  | <b>EAST</b>               | <b>BHR JHRKND CHTGH ORS WB SKM NORTH- EAST STATES</b>        |
|  | <b>WEST</b>               | <b>RAJ MP GUJ MAHA GOA</b>                                   |
|  | <b>SOUTH</b>              | <b>TLNGN AP KRNTK KER TN LKSDP ANDAMAN &amp; NICOBAR ILS</b> |
| <b>CLOUD DISTRIBUTION</b>  | <b>ISOL</b>               | <b>ISOLATED (LESS THAN 25%)</b>                              |
|  | <b>SCT</b>                | <b>SCATTERED (25 TO 50%)</b>                                 |
|  | <b>BKN</b>                | <b>BROKEN (51 TO 75%)</b>                                    |
|  | <b>SLD</b>                | <b>SOLID (GREATER THAN 75%)</b>                              |
| <b>CLOUDS TOP TEMPERATURE</b>  | <b>CTT</b>                | <b>CLOUD TOP TEMPERATURE</b>                                 |
| <b>CONVECTION</b>  | <b>WK CONVTN</b>          | <b>WEAK CONVECTION (CTT GREATER THAN -25°C)</b>              |
|  | <b>MOD CONVTN</b>         | <b>MODERATE CONVECTION (CTT BETWEEN -25°C TO -40°C)</b>      |
|  | <b>INT CONVTN</b>         | <b>INTENSE CONVECTION (CTT BETWEEN -41°C TO -70°C)</b>       |
|  | <b>V INT CONVTN</b>       | <b>VERY INTENSE CONVECTION (CTT LESS THAN -70°C)</b>         |
| <b>METEOROLOGICAL SUB- DIVISIONS, STATES &amp; UNION TERRITORIES</b> | <b>ARUPR</b>              | <b>ARUNACHAL PRADESH</b>                                     |
|  | <b>BHR</b>                | <b>BIHAR</b>   |
|  | <b>CHTGH</b>              | <b>CHHATTISGARH</b>  |
|  | <b>COTL AP</b>            | <b>COASTAL ANDHRA PRADESH</b>                                |
|  | <b>COTL KRNTK</b>         | <b>COASTAL KARNATAKA</b>                                     |
|  | <b>COTL ORS</b>           | <b>COASTAL ORISSA</b>  |
|  | <b>GUJ</b>                | <b>GUJARAT</b>   |
|  | <b>GWB</b>                | <b>GANGETIC WEST BENGAL</b>                                  |
|  | <b>HARY</b>               | <b>HARYANA</b>   |
|  | <b>DLH</b>                | <b>DELHI</b>   |
|  | <b>HP</b>                 | <b>HIMACHAL PRADESH</b>                                      |
|  | <b>J&amp;K</b>            | <b>JAMMU AND KASHMIR</b>                                     |
|  | <b>JHRKND</b>             | <b>JHARKHAND</b>   |
|  | <b>KER</b>                | <b>KERALA</b>  |
|  | <b>KKN</b>                | <b>KONKAN</b>  |
|  | <b>LKSDP</b>              | <b>LAKSHADWEEP</b>   |
| <b>M MAHA</b>  | <b>MADHYA MAHARASHTRA</b> |  |
| <b>MAHA</b>  | <b>MAHARASHTRA</b>        |  |

|                      |                        |                                     |
|----------------------|------------------------|-------------------------------------|
|                      | <b>MANI</b>            | <b>MANIPUR</b>                      |
|                      | <b>MEGHA</b>           | <b>MEGHALAYA</b>                    |
|                      | <b>MIZO</b>            | <b>MIZORAM</b>                      |
|                      | <b>MP</b>              | <b>MADHYA PRADESH</b>               |
|                      | <b>MRTHWD</b>          | <b>MARATHWADA</b>                   |
|                      | <b>NAGA</b>            | <b>NAGALAND</b>                     |
|                      | <b>N COTL AP</b>       | <b>NORTH COASTAL ANDHRA PRADESH</b> |
|                      | <b>NIK</b>             | <b>NORTH INTERIOR KARNATAKA</b>     |
|                      | <b>ORS</b>             | <b>ORISSA</b>                       |
|                      | <b>PJB</b>             | <b>PUNJAB</b>                       |
|                      | <b>RAJ</b>             | <b>RAJASTHAN</b>                    |
|                      | <b>RYLSM</b>           | <b>RAYALASEEMA</b>                  |
|                      | <b>SAU &amp; KUTCH</b> | <b>SAURASHTRA &amp; KUTCH</b>       |
|                      | <b>SHWB</b>            | <b>SUB-HIMALAYAN WEST BENGAL</b>    |
|                      | <b>SIK</b>             | <b>SOUTH INTERIOR KARNATAKA</b>     |
|                      | <b>SKM</b>             | <b>SIKKIM</b>                       |
|                      | <b>TLNGN</b>           | <b>TELANGANA</b>                    |
|                      | <b>TN</b>              | <b>TAMIL NADU</b>                   |
|                      | <b>TRP</b>             | <b>TRIPURA</b>                      |
|                      | <b>UP</b>              | <b>UTTAR PRADESH</b>                |
|                      | <b>UTRKND</b>          | <b>UTTARAKHAND</b>                  |
|                      | <b>VID</b>             | <b>VIDHARBHA</b>                    |
|                      | <b>SHWB</b>            | <b>SUB HIMALAYAN WEST BENGAL</b>    |
|                      | <b>GWB</b>             | <b>GANGETIC WEST BENGAL</b>         |
|                      | <b>ARSEA</b>           | <b>ARABIAN SEA</b>                  |
|                      | <b>ILS</b>             | <b>ISLANDS</b>                      |
| <b>MISCELLANEOUS</b> | <b>ASSW</b>            | <b>IN ASSOCIATION WITH</b>          |
|                      | <b>ASSTD</b>           | <b>ASSOCIATED</b>                   |
|                      | <b>LLC</b>             | <b>LOW LEVEL CIRCULATION</b>        |
|                      | <b>EMBDD</b>           | <b>EMBEDDED</b>                     |
|                      | <b>N/HOOD</b>          | <b>NEIGHBOURHOOD</b>                |
|                      | <b>EXT</b>             | <b>EXTREME</b>                      |