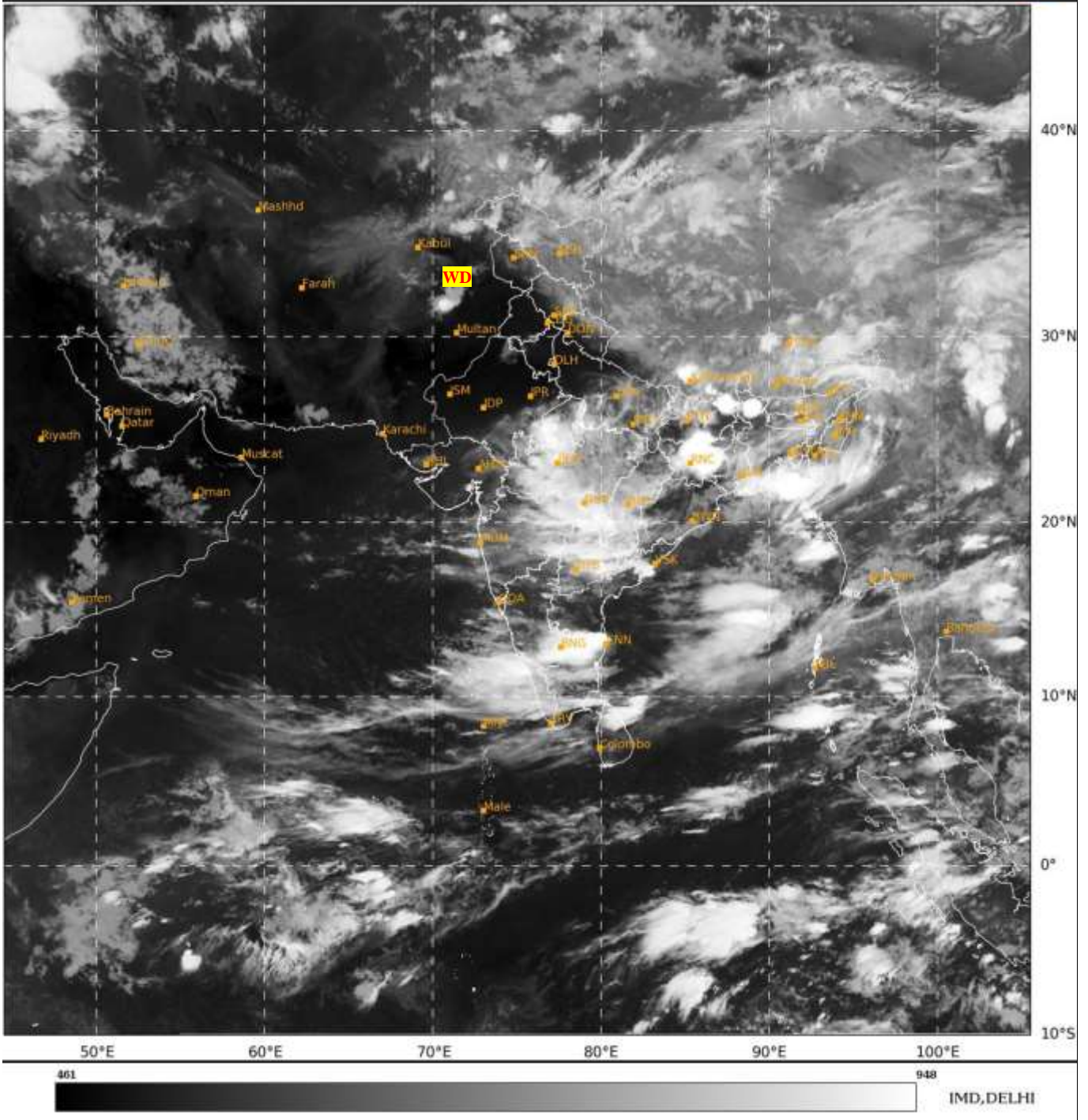




**SATELLITE BULLETIN BASED ON SATELLITE
IMAGERIES AND PRODUCTS**
18.06.2024 TIME 1800 UTC

SAT : INSAT-3D IMG
IMG TIR1 10.8 um
LIC Mercator

18-06-2024/(1700 to 1726) GMT
18-06-2024/(2230 to 2256) IST



TCIN50 DEMS 181800

SATELLITE BULLETIN BASED ON INSAT-3D PIC OF 181700 UTC (.)

REGION COVERED BETWEEN LAT 50.0°N TO 35.0°S AND LONG 30.0°E TO 125.0°E (.)

SALIENT FEATURES:-

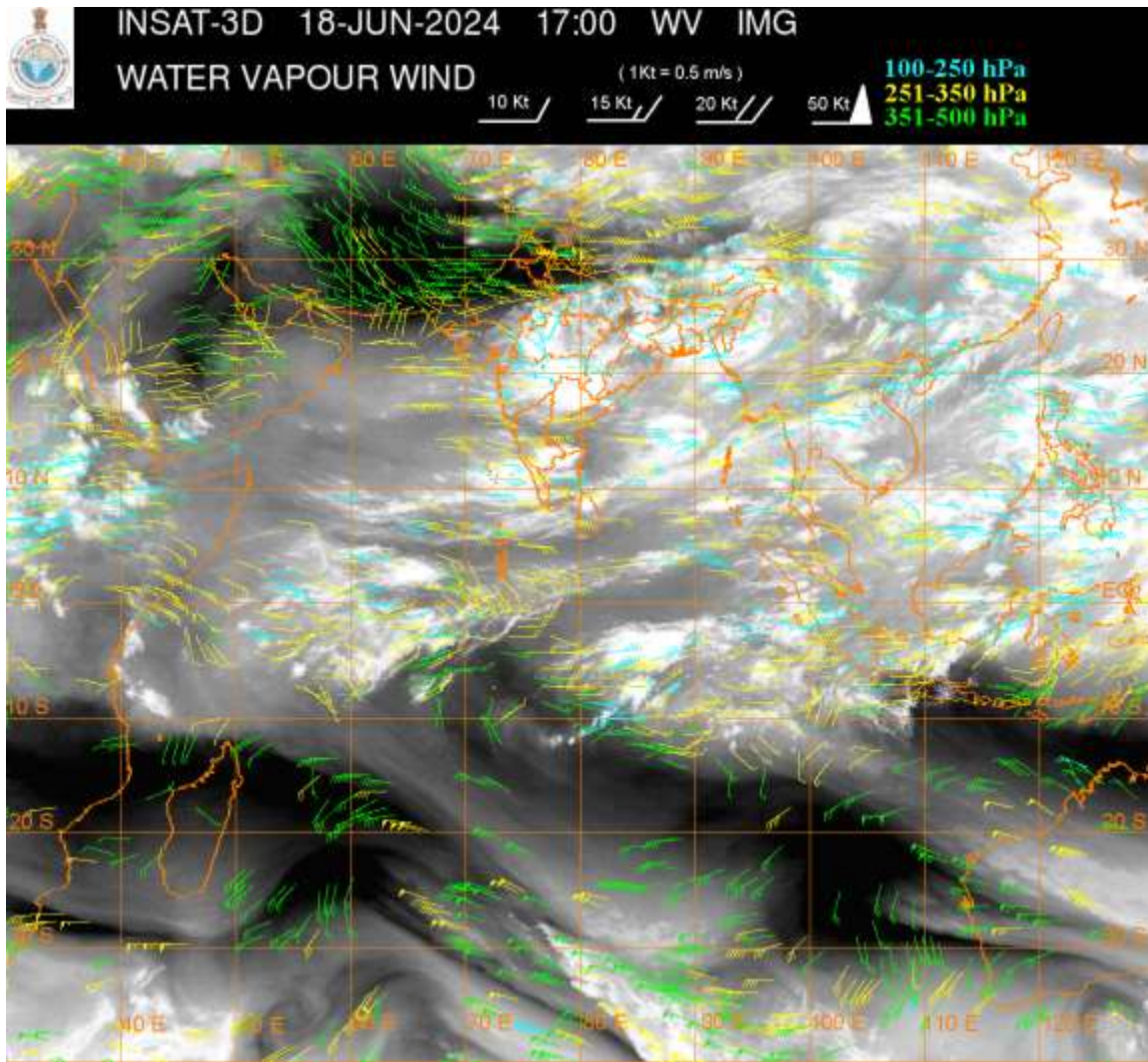
WESTERN DISTURBANCE:-

SCT MULTILAYERED CLOUDS OVER N PAK J&K LADAKH HP UTRKND TIBET ADJ CHINA IN ASSW **WD** OVER THE AREA (.)

CONVECTIVE / THUNDERSTORM ACTIVITY:-

INTENSE TO VERY INTENSE CONVECTIVE / THUNDERSTORM ACTIVITY OBSERVED OVER SW UP S CHTGH E BHR E JHRKND ADJ W GWB SHWB ADJ BD ARUPR MIZO & S BD EC RAJ MP VID MRTHWD TLNGN N COTL AP SE SIK ADJ RYLSM & N TN N KER LKSDP ILS NICOBAR ILS AREA (MINIMUM **CTT MINUS 80-93 DEG CEL**) (.)

MODERATE TO INTENSE CONVECTIVE / THUNDERSTORM ACTIVITY OBSERVED OVER LADAKH E UP W BHR REST JHRKND N CHTGH ORS REST GWB SKM REST NE STATES REST KRNTK S KER REST TN ANDAMAN ILS (MINIMUM CTT MINUS 45-65 DEG CEL) (.)



CLOUDS DESCRIPTION WITHIN INDIA:-

NORTH:-

SCT LOW/MED CLOUDS WITH EMBDD INT TO V INT CONVTN OVER SW UP (.) SCT LOW/MED CLOUDS WITH EMBDD MOD TO INT CONVTN OVER LADAKH E UP AND WK TO MOD CONVTN OVER J&K HP N UTRKND W HARY (.) SCT LOW/MED CLOUDS OVER S UTRKND S PJB NW UP (.)

EAST:-

SCT TO BKN LOW/MED CLOUDS WITH EMBDD INT TO V INT CONVTN OVER S CHTGH E BHR E JHRKND ADJ W GWB SHWB ADJ BD ARUPR MIZO & S BD (.) SCT LOW/MED CLOUDS WITH EMBDD MOD TO INT CONVTN OVER W BHR REST JHRKND N CHTGH ORS REST GWB SKM REST NE STATES & REST BD (.)

WEST:-

SCT TO BKN LOW/MED CLOUDS WITH EMBDD INT TO V INT CONVTN OVER EC RAJ MP VID MRTHWD (.) SCT LOW/MED CLOUDS WITH EMBDD WK TO MOD CONVTN OVER NW & REST E RAJ GUJ MADHYA MAHA KKN GOA (.) ISOL LOW/MED CLOUDS OVER SW RAJ (.)

SOUTH:-

SCT TO BKN LOW/MED CLOUDS WITH EMBDD INT TO V INT CONVTN OVER TLNGN N COTL AP SE SIK ADJ RYLSM & N TN N KER LKSDP ILS NICOBAR ILS AREA (.) SCT LOW/MED CLOUDS WITH EMBDD MOD TO INT CONVTN OVER REST KRNTK S KER REST TN ANDAMAN ILS AND ISOL WK TO MOD CONVTN OVER REST RYLSM S COTL AP (.)

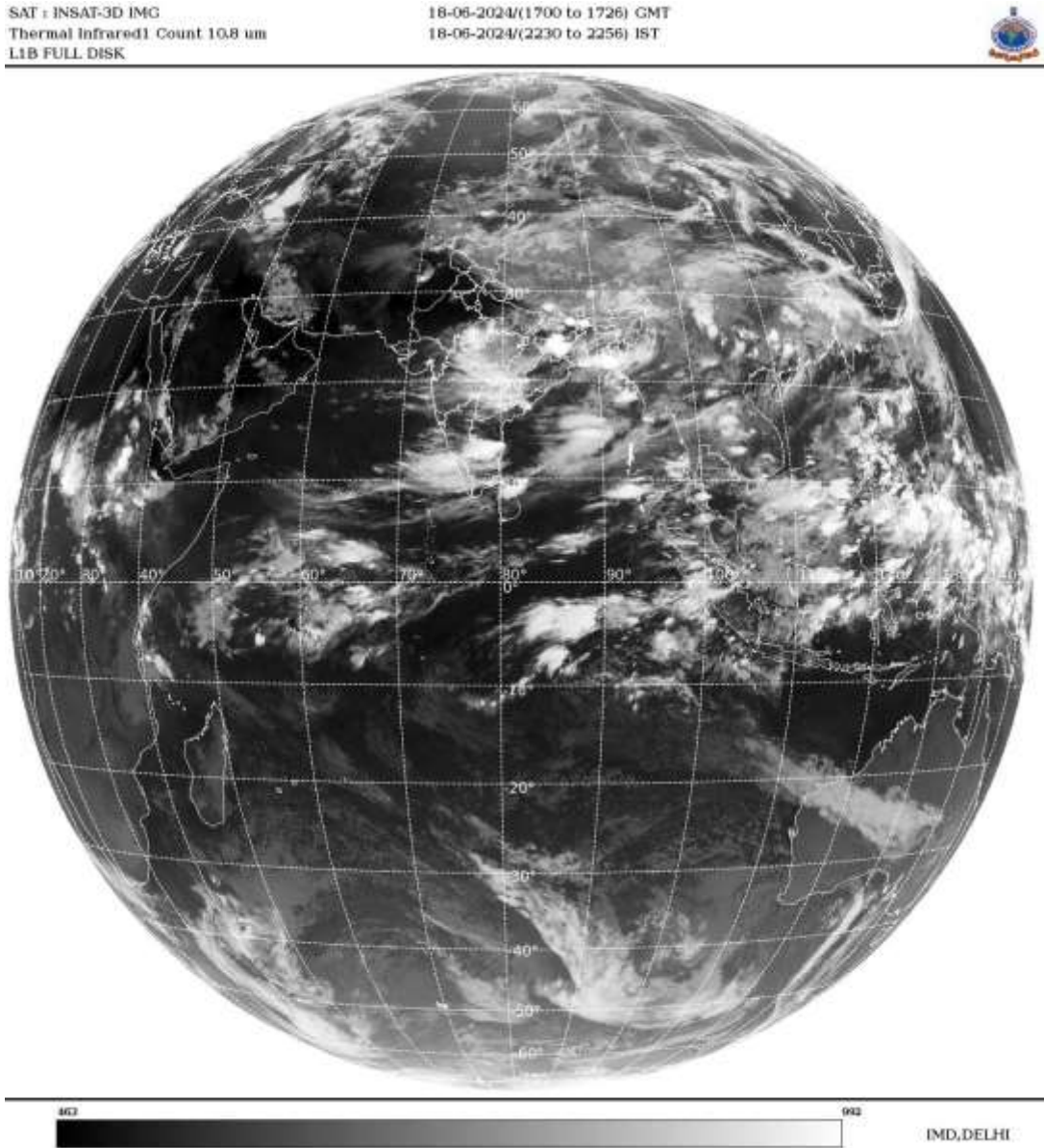
ARABIAN SEA:-

SCT LOW/MED CLOUDS WITH EMBDD INT TO V INT CONVTN OVER SE ARSEA OFF KER COAST ADJ LKSDP ILS AREA (MINIMUM CTT MINUS 80-85 DEG CEL) (.) SCT LOW/MED CLOUDS WITH EMBDD MOD TO INT CONVTN OVER EC & REST SOUTH ARSEA COMORIN AREA AND ISOL WK TO MOD CONVTN OVER NE & WC ARSEA (.)

BAY OF BENGAL & ANDAMAN SEA:-

SCT LOW/MED CLOUDS WITH EMBDD INT TO V INT CONVTN OVER BAY ANDAMAN SEA AND ARAKAN COAST (MINIMUM **CTT MINUS 80-93 DEG CEL**) (.) SCT LOW/MED CLOUDS WITH EMBDD MOD TO INT CONVTN OVER GULF OF MARTABAN & TENASSERIM COAST (.)

CLOUDS DESCRIPTION OUTSIDE INDIA:-



SCT LOW/MED CLOUDS WITH EMBDD MOD TO INT CONVTN OVER SRI LANKA PALK STR GULF OF MANNAR MALDIVES N PAK NEPAL BHUTAN TIBET CHINA YELLOW SEA EAST CHINA SEA TAIWAN MYANMAR THAILAND GULF OF THAILAND CAMBODIA LAOS VIETNAM GULF OF TONKIN HAINAN SUMATRA STR OF MALACCA MALAYSIA BORNEO SOUTH CHINA SEA JAVA ILS & SEA CELEBES ILS & SEA PHILIPPINES SULU SEA AND OVER INDIAN OCEAN BET LAT BET LAT 5.0N TO 12.5S LONG 40.0E TO 110.0E (.)

TOO 18/2330 HRS IST=

NNNN

LEGEND:-

REGION	NORTH	J&K HP PJB HARY DLH UP UTRKND
	EAST	BHR JHRKND CHTGH ORS WB SKM NORTH- EAST STATES
	WEST	RAJ MP GUJ MAHA GOA
	SOUTH	TLNGN AP KRNTK KER TN LKSDP ANDAMAN & NICOBAR ILS

CLOUD DISTRIBUTION	ISOL	ISOLATED (LESS THAN 25%)	
	SCT	SCATTERED (25 TO 50%)	
	BKN	BROKEN (51 TO 75%)	
	SLD	SOLID (GREATER THAN 75%)	
CLOUDS TOP TEMPERATURE	CTT	CLOUD TOP TEMPERATURE	
CONVECTION	WK CONVTN	WEAK CONVECTION (CTT GREATER THAN -25°C)	
	MOD CONVTN	MODERATE CONVECTION (CTT BETWEEN -25°C TO -40°C)	
	INT CONVTN	INTENSE CONVECTION (CTT BETWEEN -41°C TO -70°C)	
	V INT CONVTN	VERY INTENSE CONVECTION (CTT LESS THAN -70°C)	
METEOROLOGICAL SUB- DIVISIONS, STATES & UNION TERRITORIES	ARUPR	ARUNACHAL PRADESH	
	BHR	BIHAR	
	CHTGH	CHHATTISGARH	
	COTL AP	COASTAL ANDHRA PRADESH	
	COTL KRNTK	COASTAL KARNATAKA	
	COTL ORS	COASTAL ORISSA	
	GUJ	GUJARAT	
	GWB	GANGETIC WEST BENGAL	
	HARY	HARYANA	
	DLH	DELHI	
	HP	HIMACHAL PRADESH	
	J&K	JAMMU AND KASHMIR	
	JHRKND	JHARKHAND	
	KER	KERALA	
	KKN	KONKAN	
	LKSDP	LAKSHADWEEP	
	M MAHA	MADHYA MAHARASHTRA	
	MAHA	MAHARASHTRA	
	MANI	MANIPUR	
	MEGHA	MEGHALAYA	
	MIZO	MIZORAM	
	MP	MADHYA PRADESH	
		MRTHWD	MARATHWADA
		NAGA	NAGALAND
		N COTL AP	NORTH COASTAL ANDHRA PRADESH
		NIK	NORTH INTERIOR KARNATAKA
ORS		ORISSA	
PJB		PUNJAB	
RAJ		RAJASTHAN	
RYLSM		RAYALSEEMA	
SAU & KUTCH		SAURASHTRA & KUTCH	
SHWB		SUB-HIMALAYAN WEST BENGAL	
SIK		SOUTH INTERIOR KARNATAKA	
SKM		SIKKIM	

	TLNGN	TELANGANA
	TN	TAMIL NADU
	TRP	TRIPURA
	UP	UTTAR PRADESH
	UTRKND	UTTRAKHAND
	VID	VIDARBHA
	SHWB	SUB HIMALAYAN WEST BENGAL
	GWB	GANGETIC WEST BENGAL
	ARSEA	ARABIAN SEA
	ILS	ISLANDS
MISCELLANEOUS	ASSW	IN ASSOCIATION WITH
	ASSTD	ASSOCIATED
	LLC	LOW LEVEL CIRCULATION
	EMBDD	EMBEDDED
	N/HOOD	NEIGHBOURHOOD
	EXT	EXTREME