



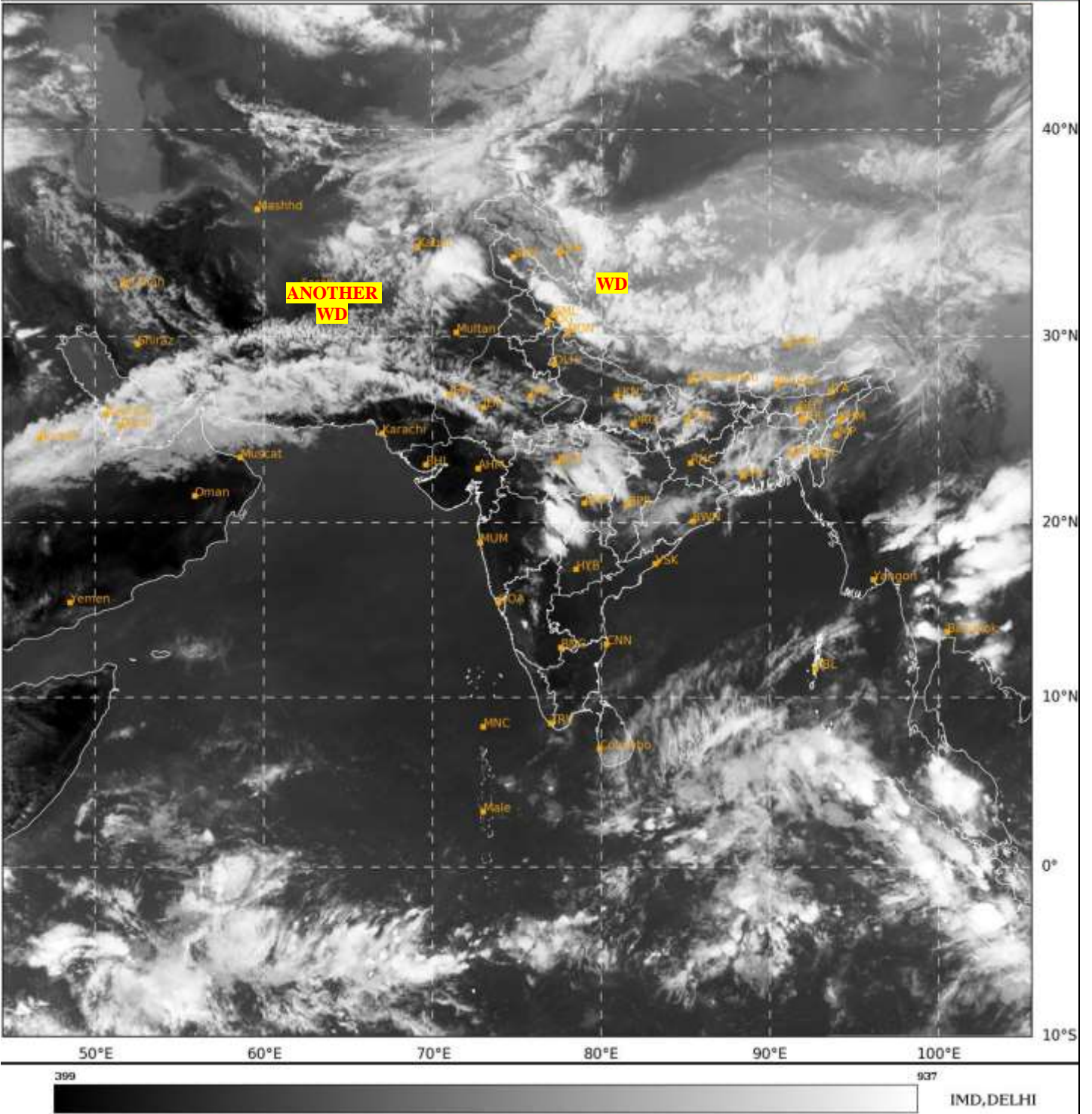
भारत मौसम विज्ञान विभाग  
पृथ्वी विज्ञान मंत्रालय  
India Meteorological Department  
Ministry of Earth Sciences



**SATELLITE BULLETIN BASED ON SATELLITE  
IMAGERIES AND PRODUCTS**  
**09.04.2024 TIME 1200 UTC**

SAT : INSAT-3D IMG  
IMG\_TIR1 10.8 um  
LIC Mercator

09-04-2024/(1200 to 1226) GMT  
09-04-2024/(1730 to 1756) IST



TCIN50 DEMS 091200

SATELLITE BULLETIN BASED ON INSAT-3D PIC OF 091200 UTC (.)

REGION COVERED BETWEEN LAT 50.0°N TO 35.0°S AND LONG 30.0°E TO 125.0°E (.)

**SALIENT FEATURES:-**

**WESTERN DISTURBANCE:-**

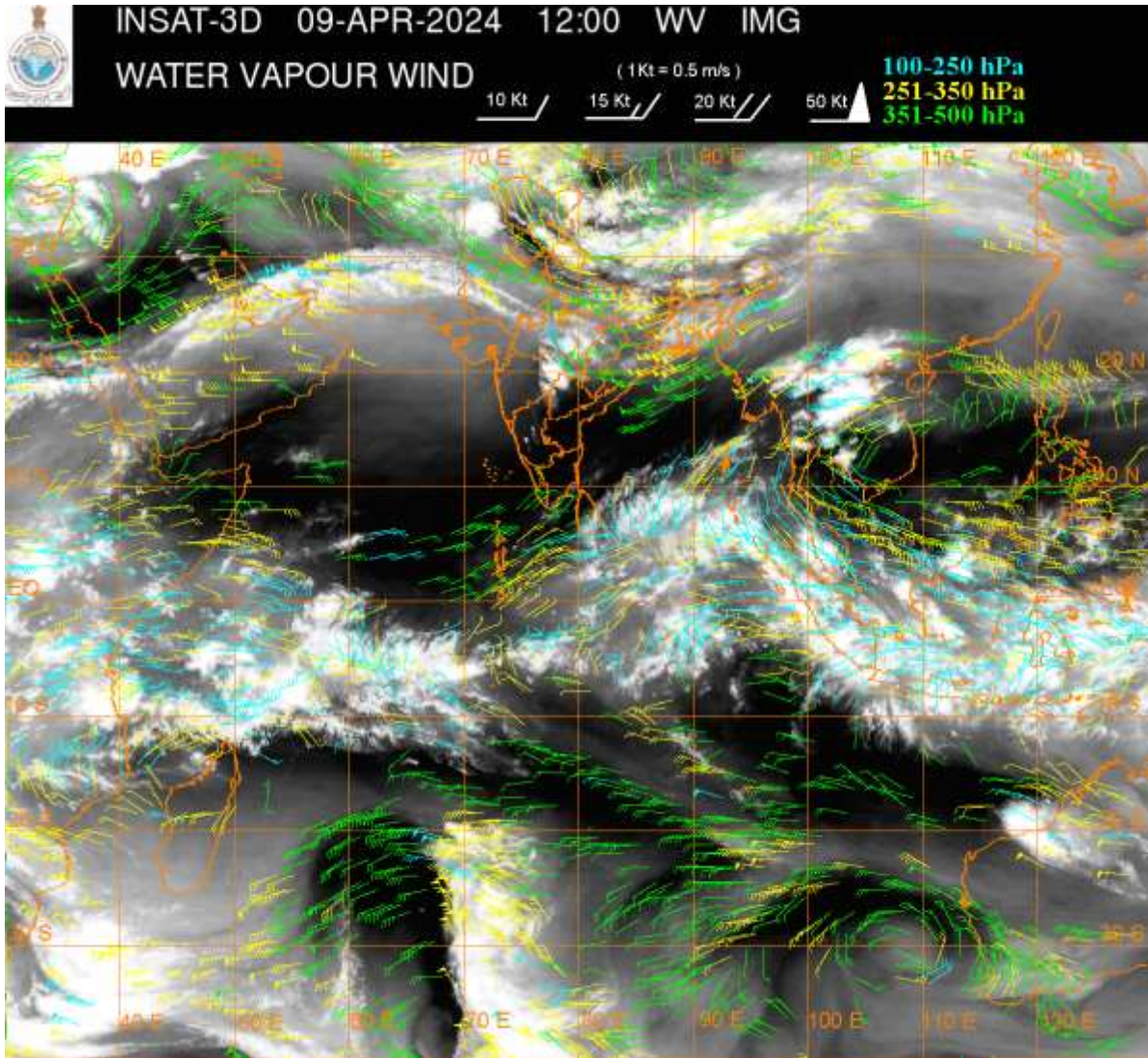
SCT MULTILAYERED CLOUDS OVER E LADAKH HP UTRKND TIBET ADJ CHINA IN ASSW **WD**  
OVER THE AREA (.)

SCT MULTILAYERED CLOUDS OVER AFGAN ADJ PAK AND N/HOOD IN ASSW **ANOTHER WD**  
OVER THE AREA (.)



**THUNDERSTORM / CONVECTIVE ACTIVITY:-**

**INTENSE TO VERY INTENSE THUNDERSTORM / CONVECTIVE ACTIVITY OVER MRTHWD VID (MINIMUM CTT MINUS 85 DEG CEL) S MP (MINIMUM CTT MINUS 75 DEG CEL) E LADAKH J&K HP UTRKND SKM ARUPR N SIK NICOBAR ILS (MINIMUM CTT MINUS 65-70 DEG CEL) (.)**  
**MODERATE TO INTENSE THUNDERSTORM / CONVECTIVE ACTIVITY OVER N TLNGN (MINIMUM CTT MINUS 65 DEG CEL) E UP W BHR S RAJ N MP N CHTGH (MINIMUM CTT MINUS 50 DEG CEL) N ORS E GWB NIK (MINIMUM CTT MINUS 40-45 DEG CEL) (.)**



**CLOUDS DESCRIPTION WITHIN INDIA:-**

**NORTH:-**

**SCT TO BKN LOW/MED CLOUDS WITH EMBDD INT CONVTN OVER E LADAKH J&K HP UTRKND (.) SCT LOW/MED CLOUDS WITH EMBDD MOD TO INT CONVTN OVER E UP AND ISOL WK TO MOD CONVTN OVER REST LADAKH PJB HARY W UP (.) SCT LOW/MED CLOUDS OVER DLH (.)**

**EAST:-**

**SCT LOW/MED CLOUDS WITH EMBDD INT CONVTN OVER SKM ARUPR (.) SCT LOW/MED CLOUDS WITH EMBDD MOD TO INT CONVTN OVER W BHR N CHTGH N ORS E GWB TRP & BD (.) SCT LOW/MED CLOUDS WITH EMBDD WK TO MOD CONVTN OVER E BHR JHRKND S CHTGH S ORS W GWB SHWB REST NE STATES (.)**

**WEST:-**

**SCT TO BKN LOW/MED CLOUDS WITH EMBDD INT TO V INT CONVTN OVER S MP (MINIMUM CTT MINUS 75 DEG CEL) MRTHWD VID (MINIMUM CTT MINUS 85 DEG CEL) (.) SCT LOW/MED CLOUDS WITH EMBDD MOD TO INT CONVTN OVER S RAJ AND WK TO MOD CONVTN OVER N RAJ REST MP SOUTH MADHYA MAHA (.) SCT LOW/MED CLOUDS OVER N GUJ (.)**

**SOUTH:-**

**SCT LOW/MED CLOUDS WITH EMBDD INT CONVTN OVER N SIK NICOBAR ILS (.) SCT LOW/MED CLOUDS WITH EMBDD MOD TO INT CONVTN OVER NIK N TLNGN AND WK TO MOD CONVTN OVER ANDAMAN ILS (.) SCT LOW/MED CLOUDS OVER REST KRNTK S TLNGN RYLSM N COTL AP KER TN (.)**

ARABIAN SEA:-

SCT LOW/MED CLOUDS WITH EMBDD ISOL WK TO MOD CONVTN OVER WEST ARSEA & COMORIN AREA (.)

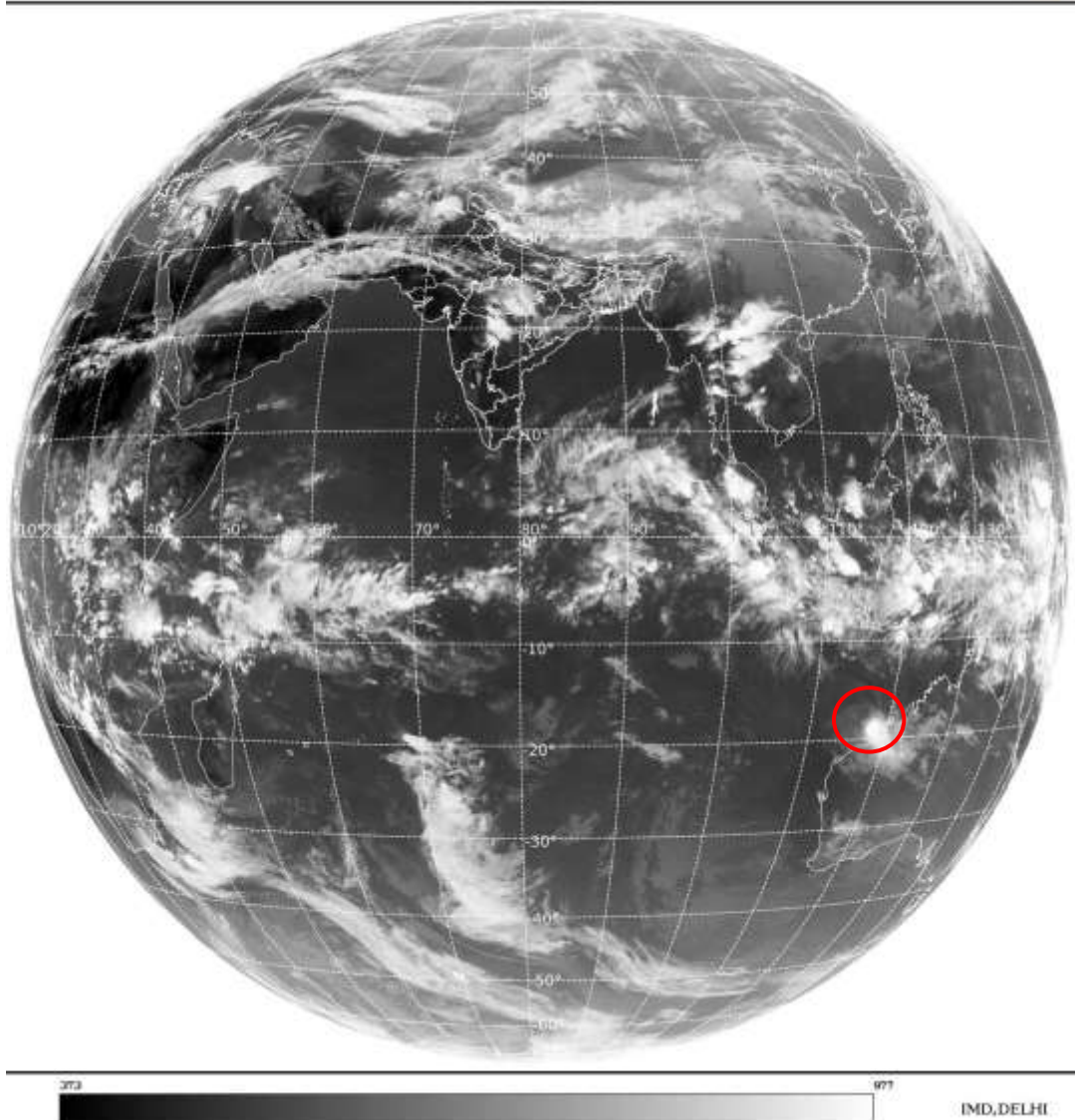
BAY OF BENGAL & ANDAMAN SEA:-

SCT TO BKN LOW/MED CLOUDS WITH EMBDD INT TO V INT CONVTN OVER SE BAY ADJ EQUATORIAL INDIAN OCEAN AND S ANDAMAN SEA (MINIMUM **CTT MINUS 90 DEG CEL**) (.)  
SCT LOW/MED CLOUDS WITH EMBDD MOD TO INT CONVTN OVER REST SOUTH BAY N ANDAMAN SEA AND ISOL WK TO MOD CONVTN OVER NW & EC BAY (.)

CLOUDS DESCRIPTION OUTSIDE INDIA:-

SAT : INSAT-3D IMG  
Thermal Infrared1 Count 10.8 um  
L1B FULL DISK

09-04-2024/(1200 to 1226) GMT  
09-04-2024/(1730 to 1756) IST



VORTEX (OLGA) OVER SOUTH INDIAN OCEAN:-

VORTEX (**OLGA**) OVER SOUTH INDIAN OCEAN (**AREA G30**) CENTERED NEAR **18.0S / 116.6E** (.)  
INTENSITY **T2.0/2.5** (.) CORRESPONDING MAXIMUM SUSTAINED WINDS OF **34-47 KTS** (.) ASSTD  
BKN LOW/MED CLOUDS WITH EMBDD INT TO V INT CONVTN OVER AREA BET LAT 17.5S TO  
22.0S LONG 116.0E TO 122.0E (.)

SCT LOW/MED CLOUDS WITH EMBDD MOD TO INT CONVTN OVER S SRI LANKA PAK NEPAL  
BHUTAN TIBET CHINA YELLOW SEA MYANMAR THAILAND CAMBODIA LAOS N VIETNAM  
GULF OF TONKIN SUMATRA STR OF MALACCA MALAYSIA BORNEO SOUTH CHINA SEA  
JAVA ILS & SEA CELEBES ILS & SEA S PHILIPPINES SULU SEA MOZAMBIQUE CHANNEL AND  
OVER INDIAN OCEAN BET LAT 5.0N TO 15.0S LONG 40.0E TO 120.0E AND BET LAT 18.0S TO  
35.0S LONG 40.0E TO 80.0E (.)

TOO 09/1850 HRS IST=

NNNN

**LEGEND:-**

<b>REGION</b>	<b>NORTH</b>	<b>J&amp;K HP PJB HARY DLH UP UTRKND</b>	
	<b>EAST</b>	<b>BHR JHRKND CHTGH ORS WB SKM NORTH- EAST STATES</b>	
	<b>WEST</b>	<b>RAJ MP GUJ MAHA GOA</b>	
	<b>SOUTH</b>	<b>TLNGN AP KRNTK KER TN LKSDP ANDAMAN &amp; NICOBAR ILS</b>	
<b>CLOUD DISTRIBUTION</b>	<b>ISOL</b>	<b>ISOLATED (LESS THAN 25%)</b>	
	<b>SCT</b>	<b>SCATTERED (25 TO 50%)</b>	
	<b>BKN</b>	<b>BROKEN (51 TO 75%)</b>	
	<b>SLD</b>	<b>SOLID (GREATER THAN 75%)</b>	
<b>CLOUDS TOP TEMPERATURE</b>	<b>CTT</b>	<b>CLOUD TOP TEMPERATURE</b>	
<b>CONVECTION</b>	<b>WK CONV TN</b>	<b>WEAK CONVECTION (CTT GREATER THAN -25°C)</b>	
	<b>MOD CONV TN</b>	<b>MODERATE CONVECTION (CTT BETWEEN -25°C TO -40°C)</b>	
	<b>INT CONV TN</b>	<b>INTENSE CONVECTION (CTT BETWEEN -41°C TO -70°C)</b>	
	<b>V INT CONV TN</b>	<b>VERY INTENSE CONVECTION (CTT LESS THAN -70°C)</b>	
<b>METEOROLOGICAL SUB- DIVISIONS, STATES &amp; UNION TERRITORIES</b>	<b>ARUPR</b>	<b>ARUNACHAL PRADESH</b>	
	<b>BHR</b>	<b>BIHAR</b>	
	<b>CHTGH</b>	<b>CHHATTISGARH</b>	
	<b>COTL AP</b>	<b>COASTAL ANDHRA PRADESH</b>	
	<b>COTL KRNTK</b>	<b>COASTAL KARNATAKA</b>	
	<b>COTL ORS</b>	<b>COASTAL ORISSA</b>	
	<b>GUJ</b>	<b>GUJARAT</b>	
	<b>GWB</b>	<b>GANGETIC WEST BENGAL</b>	
	<b>HARY</b>	<b>HARYANA</b>	
	<b>DLH</b>	<b>DELHI</b>	
	<b>HP</b>	<b>HIMACHAL PRADESH</b>	
	<b>J&amp;K</b>	<b>JAMMU AND KASHMIR</b>	
	<b>JHRKND</b>	<b>JHARKHAND</b>	
	<b>KER</b>	<b>KERALA</b>	
	<b>KKN</b>	<b>KONKAN</b>	
	<b>LKSDP</b>	<b>LAKSHADWEEP</b>	
	<b>M MAHA</b>	<b>MADHYA MAHARASHTRA</b>	
	<b>MAHA</b>	<b>MAHARASHTRA</b>	
	<b>MANI</b>	<b>MANIPUR</b>	
	<b>MEGHA</b>	<b>MEGHALAYA</b>	
	<b>MIZO</b>	<b>MIZORAM</b>	
	<b>MP</b>	<b>MADHYA PRADESH</b>	
		<b>MRTHWD</b>	<b>MARATHWADA</b>
		<b>NAGA</b>	<b>NAGALAND</b>
<b>N COTL AP</b>		<b>NORTH COASTAL ANDHRA PRADESH</b>	
<b>NIK</b>		<b>NORTH INTERIOR KARNATAKA</b>	



	<b>ORS</b>	<b>ORISSA</b>
	<b>PJB</b>	<b>PUNJAB</b>
	<b>RAJ</b>	<b>RAJASTHAN</b>
	<b>RYLSM</b>	<b>RAYALASEEMA</b>
	<b>SAU &amp; KUTCH</b>	<b>SAURASHTRA &amp; KUTCH</b>
	<b>SHWB</b>	<b>SUB-HIMALAYAN WEST BENGAL</b>
	<b>SIK</b>	<b>SOUTH INTERIOR KARNATAKA</b>
	<b>SKM</b>	<b>SIKKIM</b>
	<b>TLNGN</b>	<b>TELANGANA</b>
	<b>TN</b>	<b>TAMIL NADU</b>
	<b>TRP</b>	<b>TRIPURA</b>
	<b>UP</b>	<b>UTTAR PRADESH</b>
	<b>UTRKND</b>	<b>UTTARAKHAND</b>
	<b>VID</b>	<b>VIDHARBHA</b>
	<b>SHWB</b>	<b>SUB HIMALAYAN WEST BENGAL</b>
	<b>GWB</b>	<b>GANGETIC WEST BENGAL</b>
	<b>ARSEA</b>	<b>ARABIAN SEA</b>
	<b>ILS</b>	<b>ISLANDS</b>
<b>MISCELLANEOUS</b>	<b>ASSW</b>	<b>IN ASSOCIATION WITH</b>
	<b>ASSTD</b>	<b>ASSOCIATED</b>
	<b>LLC</b>	<b>LOW LEVEL CIRCULATION</b>
	<b>EMBDD</b>	<b>EMBEDDED</b>
	<b>N/HOOD</b>	<b>NEIGHBOURHOOD</b>
	<b>EXT</b>	<b>EXTREME</b>