





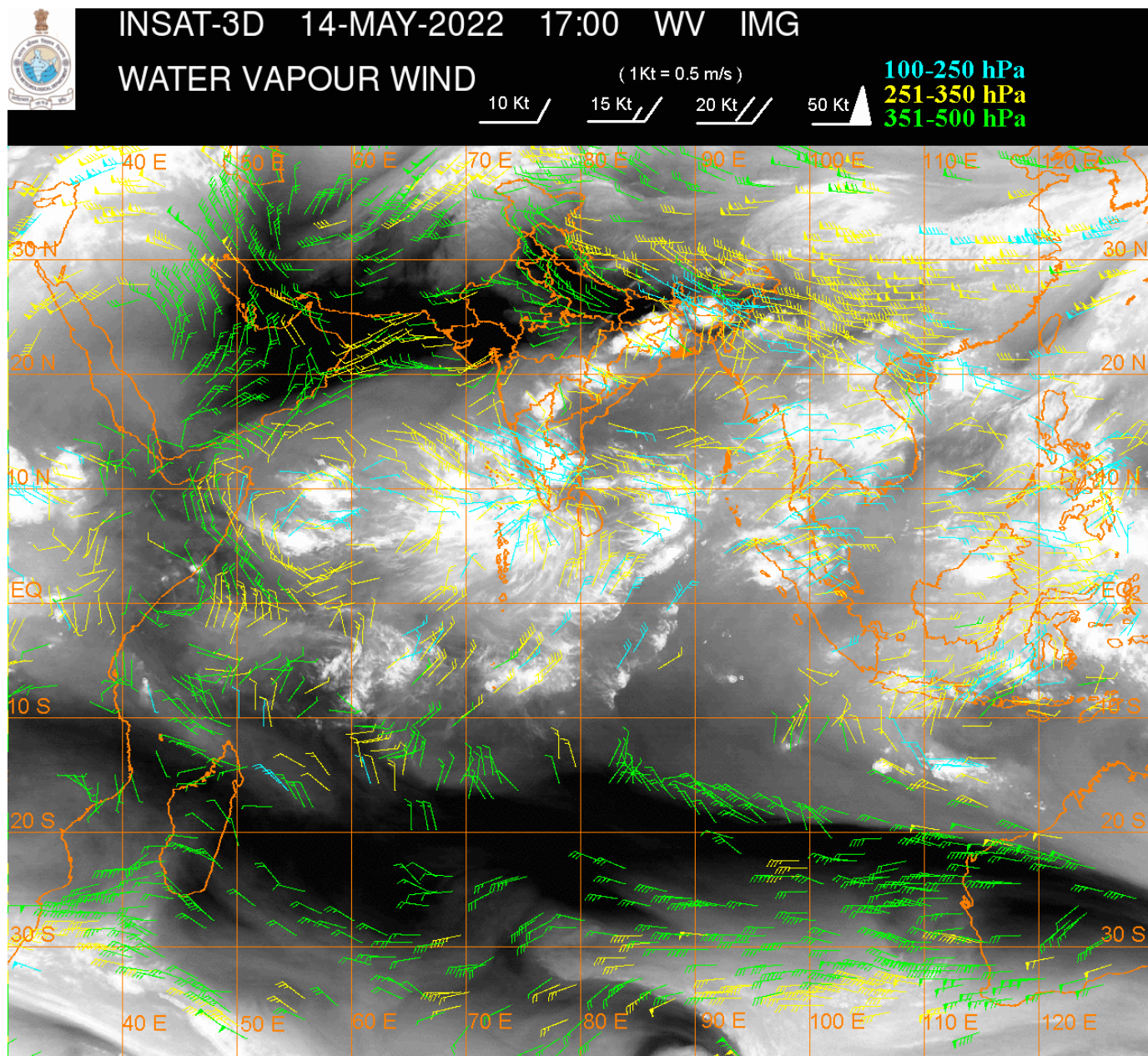
**PRECIPITATION NOWCASTING:-**

**(BASED ON SCOPE NOWCASTING TOOL AT 1600 UTC AT A LEAD TIME OF 03 HRS (MM/HR):-**

**RAINFALL UPTO 10-20 MM LIKELY OVER SE BHR ADJ SW GWB N ORS CHTGH SE SIK N NIK ADJ MRTHWD& SW TLNGN TN (.)**

**RAINFALL UPTO 5-10 MM LIKELY OVER SC ASSAM LKSDP ILS (.)**

**RAINFALL UPTO 0.5-5 MM LIKELY OVER S NIK S RYLSM (.)**



**CLOUDS DESCRIPTION WITHIN INDIA:-**

**NORTH:-**

**SCT LOW/MED CLOUDS WITH EMBDD WK TO MOD CONVTN OVER NW LADAKH AND WK CONVTN OVER REST LADAKH J&K N HP N UTRKND (.) SCT LOW/MED CLOUDS OVER S HP REST UTRKND SE UP (.)**

**EAST:-**

**SCT LOW/MED CLOUDS WITH EMBDD INT TO V INT CONVTN OVER JHRKND ADJ EXT SE BHR W GWB EXT N ORS EXT S CHTGH W ASSAM MEGHA ADJ NE BD (.) SCT LOW/MED CLOUDS WITH EMBDD MOD TO INT CONVTN OVER NE CHTGH SW ORS N ARUPR EXT NW MANI (.) SCT LOW/MED CLOUDS WITH EMBDD ISOL WK CONVTN OVER NW BHR C CHTGH SE ORS S SHWB SKM REST ARUPR REST ASSAM NAGA N ANI (.) SCT LOW/MED CLOUDS OVER REST BHR REST CHTGH REST ORS REST MANI MIZO (.)**

**WEST:-**

**SCT LOW/MED CLOUDS WITH EMBDD MOD TO INT CONVTN OVER NE MRTHWD SE VID (.) SCT LOW/MED CLOUDS WITH EMBDD WK CONVTN OVER EXT E RAJ EC MP REST VID SOUTH MADHYA MAHA S KKN (.) SCT LOW/MED CLOUDS OVER NE RAJ REST MP REST MAHA GOA (.)**

**SOUTH:-**

SCT TO BKN LOW/MED CLOUDS WITH EMBDD INT TO V INT CONVTN OVER N NIK SE SIK ADJ N TN COTL KER (.) SCT LOW/MED CLOUDS WITH EMBDD MOD TO INT CONVTN OVER SW TLNGN S RYLSM REST KER LKSDP ILS (.) SCT LOW/MED CLOUDS OVER REST TLNGN S AP REST KRNTK REST TN (.)

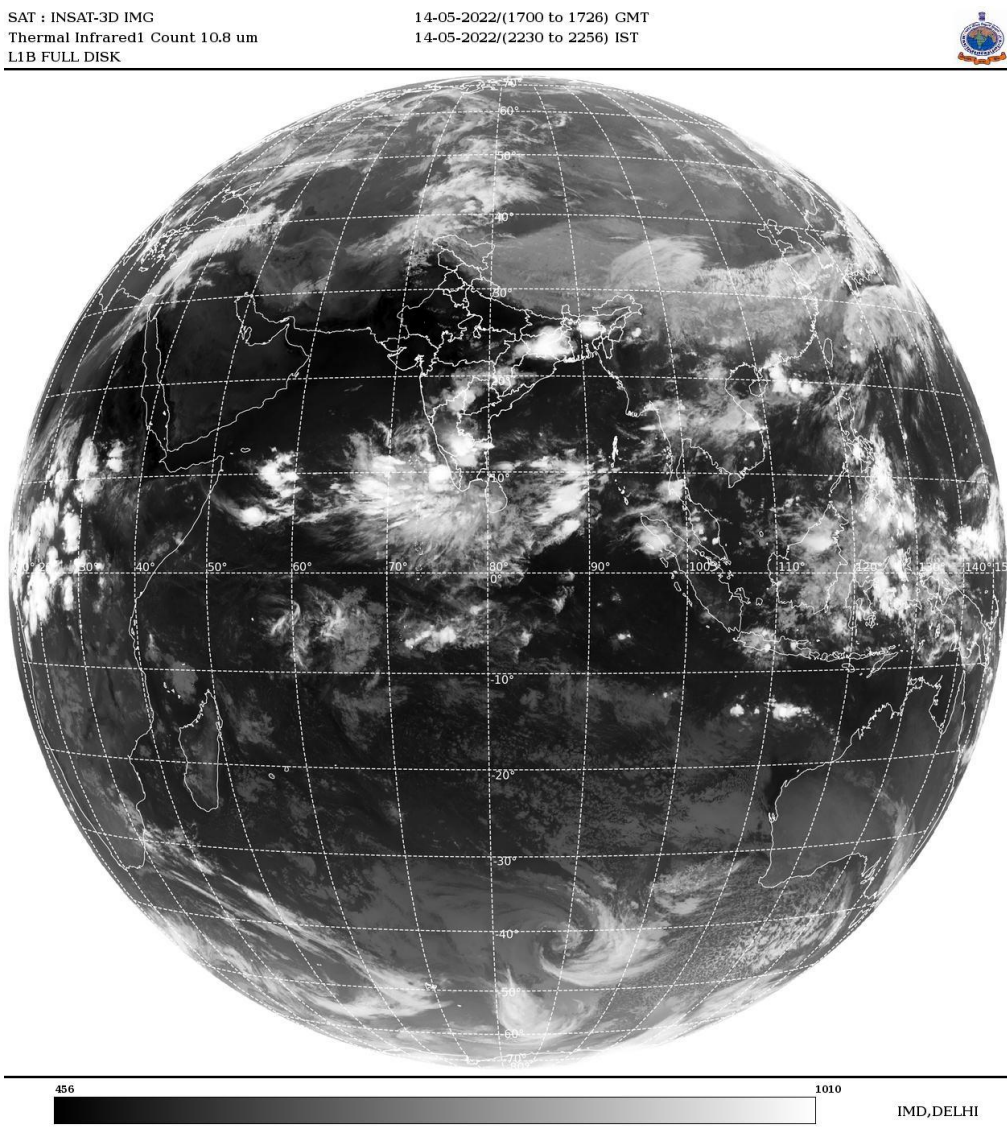
**ARABIAN SEA:-**

SCT TO BKN LOW/MED CLOUDS WITH EMBDD INT TO V INT CONVTN OVER SOUTH ARSEA & COMORIN AREA (.) SCT LOW/MED CLOUDS WITH EMBDD MOD TO INT CONVTN OVER EC ARSEA (.)

**BAY OF BENGAL & ANDAMAN SEA:-**

SCT LOW/MED CLOUDS WITH EMBDD INT TO V INT CONVTN OVER SOUTH BAY GULF OF MARTABAN ANDAMAN SEA (.)

**CLOUDS DESCRIPTION OUTSIDE INDIA:-**



SCT LOW/MED CLOUDS WITH EMBDD MOD TO INT CONVTN OVER SRI LANKA GULF OF MANNAR MALDIVES TIBET CHINA MYANMAR THAILAND GULF OF THAILAND CAMBODIA LAOS VIETNAM SUMATRA STR OF MALACCA MALAYSIA BORNEO SOUTH CHINA SEA JAVA ILS & SEA CELEBES ILS & SEA PHILIPPINES SULU SEA E CHINA YELLOW SEA AND OVER INDIAN OCEAN BET LAT 5.0N TO 9.5S LONG 53.5E TO 93.0E (.)

TOO 15/0015HRS IST=

NNNN



**LEGEND:-**

<b>REGION</b>	<b>NORTH</b>	<b>J&amp;K HP PJB HARY DLH UP UTRKND</b>
	<b>EAST</b>	<b>BHR JHRKND CHTGH OR WB SKM NORTH- EAST STATES</b>
	<b>WEST</b>	<b>RAJ MP GUJ MAHA GOA</b>
	<b>SOUTH</b>	<b>TLNGN AP KRNTK KER TN LKSDP ANDAMAN &amp; NICOBAR ILS</b>

<b>CLOUD DISTRIBUTION</b>	<b>ISOL</b>	<b>ISOLATED (LESS THAN 25%)</b>
	<b>SCT</b>	<b>SCATTERED (25 TO 50%)</b>
	<b>BKN</b>	<b>BROKEN (51 TO 75%)</b>
	<b>SLD</b>	<b>SOLID (GREATER THAN 75%)</b>
<b>CLOUDS TOP TEMPERATURE</b>	<b>CTT</b>	<b>CLOUD TOP TEMPERATURE</b>
<b>CONVECTION</b>	<b>WK CONVTN</b>	<b>WEAK CONVECTION (CTT GREATER THAN -25°C)</b>
	<b>MOD CONVTN</b>	<b>MODERATE CONVECTION (CTT BETWEEN -25°C TO -40°C)</b>
	<b>INT CONVTN</b>	<b>INTENSE CONVECTION (CTT BETWEEN -41°C TO -70°C)</b>
	<b>V INT CONVTN</b>	<b>VERY INTENSE CONVECTION (CTT LESS THAN -70°C)</b>
<b>METEOROLOGICAL SUB-DIVISIONS, STATES &amp; UNION TERRITORIES</b>	<b>ARUPR</b>	<b>ARUNACHAL PRADESH</b>
	<b>BHR</b>	<b>BIHAR</b>
	<b>CHTGH</b>	<b>CHHATTISGARH</b>
	<b>COTL AP</b>	<b>COASTAL ANDHRA PRADESH</b>
	<b>COTL KRNTK</b>	<b>COASTAL KARNATAKA</b>
	<b>COTL ORS</b>	<b>COASTAL ORISSA</b>
	<b>GUJ</b>	<b>GUJARAT</b>
	<b>GWB</b>	<b>GANGETIC WEST BENGAL</b>
	<b>HARY</b>	<b>HARYANA</b>
	<b>DLH</b>	<b>DELHI</b>
	<b>HP</b>	<b>HIMACHAL PRADESH</b>
	<b>J&amp;K</b>	<b>JAMMU AND KASHMIR</b>
	<b>JHRKND</b>	<b>JHARKHAND</b>
	<b>KER</b>	<b>KERALA</b>
	<b>KKN</b>	<b>KONKAN</b>
	<b>LKSDP</b>	<b>LAKSHADWEEP</b>
	<b>M MAHA</b>	<b>MADHYA MAHARASHTRA</b>
	<b>MAHA</b>	<b>MAHARASHTRA</b>
	<b>MANI</b>	<b>MANIPUR</b>
	<b>MEGHA</b>	<b>MEGHALAYA</b>
	<b>MIZO</b>	<b>MIZORAM</b>
	<b>MP</b>	<b>MADHYA PRADESH</b>
	<b>MRTHWD</b>	<b>MARATHWADA</b>
	<b>NAGA</b>	<b>NAGALAND</b>

	<b>N COTL AP</b>	<b>NORTH COASTAL ANDHRA PRADESH</b>
	<b>NIK</b>	<b>NORTH INTERIOR KARNATAKA</b>
	<b>ORS</b>	<b>ORISSA</b>
	<b>PJB</b>	<b>PUNJAB</b>
	<b>RAJ</b>	<b>RAJASTHAN</b>
	<b>RYLSM</b>	<b>RAYALASEEMA</b>
	<b>SAU &amp; KUTCH</b>	<b>SAURASHTRA &amp; KUTCH</b>
	<b>SHWB</b>	<b>SUB-HIMALAYAN WEST BENGAL</b>
	<b>SIK</b>	<b>SOUTH INTERIOR KARNATAKA</b>
	<b>SKM</b>	<b>SIKKIM</b>
	<b>TLNGN</b>	<b>TELANGANA</b>
	<b>TN</b>	<b>TAMIL NADU</b>
	<b>TRP</b>	<b>TRIPURA</b>
	<b>UP</b>	<b>UTTAR PRADESH</b>
	<b>UTRKN</b>	<b>UTTARAKHAND</b>
	<b>VID</b>	<b>VIDHARBHA</b>
	<b>SHWB</b>	<b>SUB HIMALAYAN WEST BENGAL</b>
	<b>GWB</b>	<b>GANGETIC WEST BENGAL</b>
	<b>ARSEA</b>	<b>ARABIAN SEA</b>
	<b>ILS</b>	<b>ISLANDS</b>
<b>MISCELLANEOUS</b>	<b>ASSW</b>	<b>IN ASSOCIATION WITH</b>
	<b>ASSTD</b>	<b>ASSOCIATED</b>
	<b>LLC</b>	<b>LOW LEVEL CIRCULATION</b>
	<b>EMBDD</b>	<b>EMBEDDED</b>
	<b>N/HOOD</b>	<b>NEIGHBOURHOOD</b>
	<b>EXT</b>	<b>EXTREME</b>