



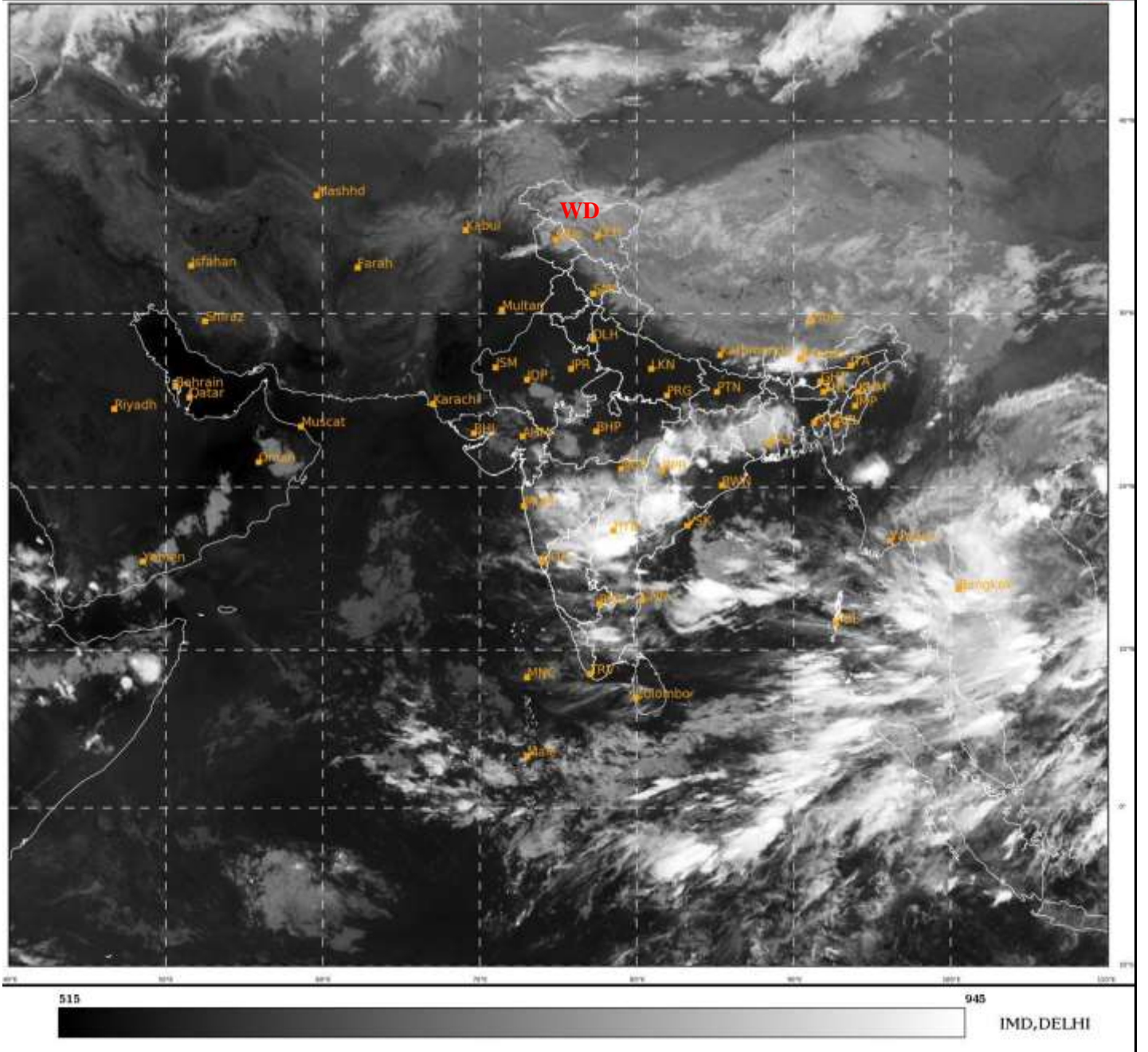
भारत मौसम विज्ञान विभाग  
पृथ्वी विज्ञान मंत्रालय  
India Meteorological Department  
Ministry of Earth Sciences



**SATELLITE BULLETIN BASED ON SATELLITE  
IMAGERIES AND PRODUCTS**  
**28.09.2022 TIME 1800 UTC**

SAT : INSAT-3D IMG  
IMG\_TIR1 10.8 um  
LIC Mercator

28-09-2022/(1630 to 1656) GMT  
28-09-2022/(2200 to 2226) IST



TCIN50 DEMS 281800

SATELLITE BULLETIN BASED ON INSAT-3D PIC OF 281630 UTC (.)

REGION COVERED BETWEEN LAT 50.0°N TO 35.0°S AND LONG 40.0°E TO 125.0°E (.)

**SALIENT FEATURES:-**

**WESTERN DISTURBANCE OVER THE AREA:-**

SCT MULTILAYERED CLOUDS OVER J&K LADAKH AND N/HOOD IN ASSW **WD** OVER THE AREA (.)

**INTENSE CONVECTIVE CLOUDS:-**

INTENSE CONVECTIVE CLOUDS OBSERVED OVER CHTGH W ORS W ASSAM MAHA TLNGN NIK RYLSM C TN & NICOBAR ILS (.)





INSAT-3D 28-SEP-2022 16:30 WV IMG

WATER VAPOUR WIND

(1Kt = 0.5 m/s)

10 Kt

15 Kt

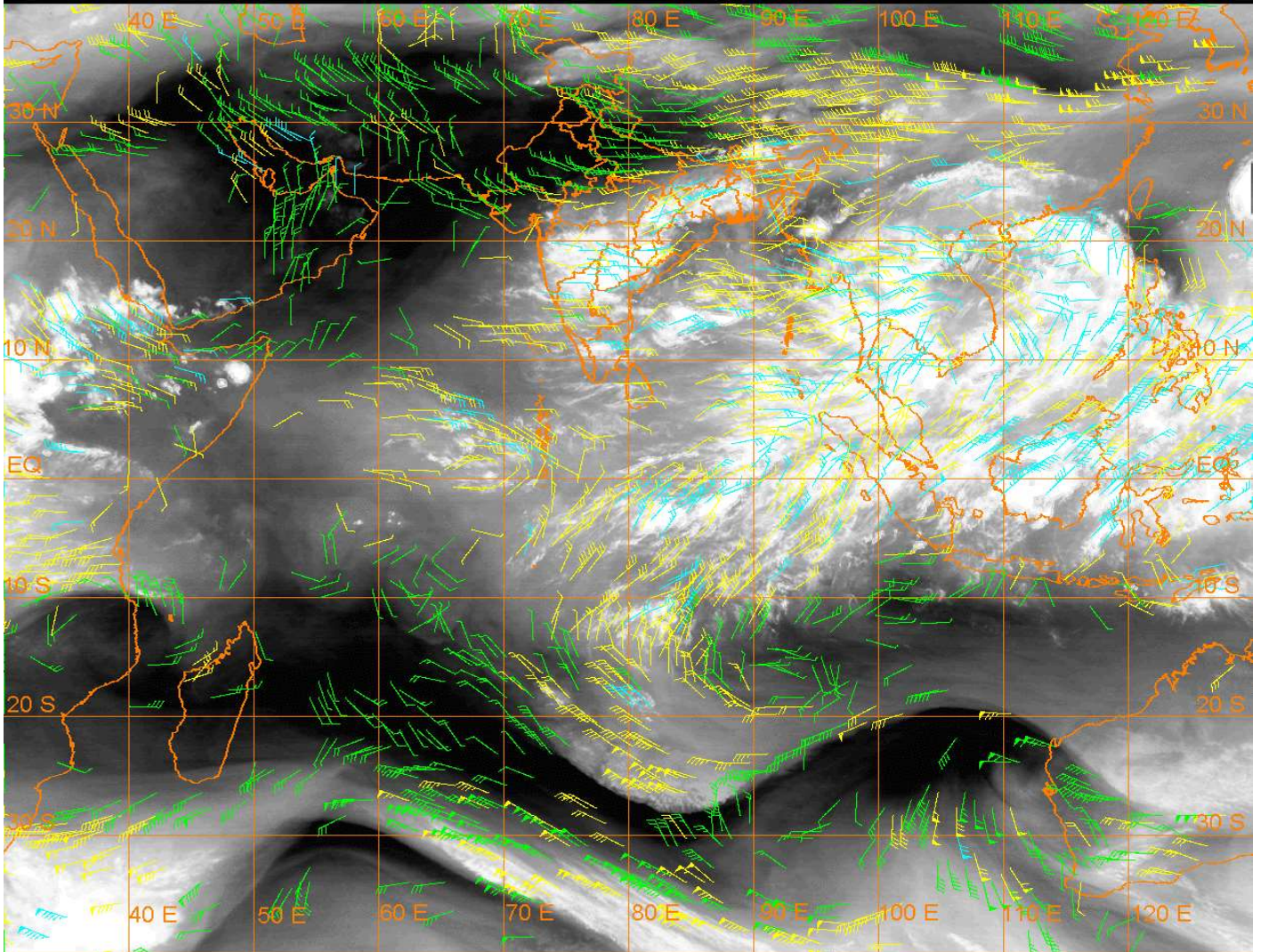
20 Kt

50 Kt

100-250 hPa

251-350 hPa

351-500 hPa



### LOUDS DESCRIPTION WITHIN INDIA:-

#### NORTH:-

SCT LOW/MED CLOUDS WITH EMBDD WK TO MOD CONV TN OVER LADAKH J&K HP UTRKND  
(.) SCT LOW/MED CLOUDS OVER E UP (.)

#### EAST:-

BKN LOW/MED CLOUDS WITH EMBDD INT TO V INT CONV TN OVER CHTGH W ORS (.) SCT  
LOW/MED CLOUDS WITH EMBDD MOD TO INT CONV TN OVER JHRKND GWB SHWB SKM  
ARUPR ASSAM & BD (.) SCT LOW/MED CLOUDS OVER E ORS BHR REST NE STATES (.)

#### WEST:-

SCT TO BKN LOW/MED CLOUDS WITH EMBDD MOD TO INT CONV TN OVER MAHA (.) SCT  
LOW/MED CLOUDS WITH EMBDD WK TO MOD CONV TN OVER S RAJ S MP GUJ & GOA (.) SCT  
LOW/MED CLOUDS OVER N RAJ N MP (.)

#### SOUTH:-

SCT TO BKN LOW/MED CLOUDS WITH EMBDD INT TO V INT CONV TN OVER TLNGN (.) SCT  
LOW/MED CLOUDS WITH EMBDD MOD TO INT CONV TN OVER RYLSMA COTL AP NIK N KER  
CENTRAL TN ANDAMAN & NICOBAR ILS (.) SCT LOW/MED CLOUDS WITH EMBDD WK TO  
MOD CONV TN OVER REST KRNTK S KER REST TN (.) SCT LOW/MED CLOUDS OVER LKSDP  
ILS (.)

#### ARABIAN SEA:-

SCT LOW/MED CLOUDS WITH EMBDD ISOL WK TO MOD CONV TN OVER EC& SE ARSEA (.)

#### BAY OF BENGAL & ANDAMAN SEA:-

SCT LOW/MED CLOUDS WITH EMBDD INT TO V INT CONV TN OVER CENTRAL & SE BAY  
ANDAMAN SEA AND ISOL WK TO MOD CONV TN OVER REST BAY (.)

**CLOUDS DESCRIPTION OUTSIDE INDIA:-** |

SCT LOW/MED CLOUDS WITH EMBDD MOD TO INT CONVTN OVER MALDIVES E NEPAL BHUTAN TIBET CHINA MYANMAR THAILAND GULF OF THAILAND CAMBODIA LAOS VIETNAM GULF OF TONKIN HAINAN SUMATRA STR OF MALACCA MALAYSIA BORNEO SOUTH CHINA SEA CELEBES ILS & SEA PHILIPPINES SULU SEA AND OVER INDIAN OCEAN BET LAT 5.0N TO 13.0S LONG 55.0E TO 100.0E (.)

TOO 28/2330 HRS IST=

NNNN

**LEGEND:-**

|        |       |  |
|--------|-------|--|
| REGION | NORTH | J&K HP PJB HARY DLH UP UTRKND                        |
|        | EAST  | BHR JHRKND CHTGH OR WB SKM<br>NORTH- EAST STATES     |
|        | WEST  | RAJ MP GUJ MAHA GOA                                  |
|        | SOUTH | TLNGN AP KRNTK KER TN LKSDP<br>ANDAMAN & NICOBAR ILS |

|  |              |   |
|--|--------------|---|
| CLOUD DISTRIBUTION                                       | ISOL         | ISOLATED (LESS THAN 25%)                            |
|  | SCT          | SCATTERED (25 TO 50%)                               |
|  | BKN          | BROKEN (51 TO 75%)                                  |
|  | SLD          | SOLID (GREATER THAN 75%)                            |
| CLOUDS TOP TEMPERATURE                                   | CTT          | CLOUD TOP TEMPERATURE                               |
| CONVECTION   | WK CONVTN    | WEAK CONVECTION<br>(CTT GREATER THAN -25°C)         |
|  | MOD CONVTN   | MODERATE CONVECTION<br>(CTT BETWEEN -25°C TO -40°C) |
|  | INT CONVTN   | INTENSE CONVECTION<br>(CTT BETWEEN -41°C TO -70°C)  |
|  | V INT CONVTN | VERY INTENSE CONVECTION<br>(CTT LESS THAN -70°C)    |
| METEOROLOGICAL SUB-DIVISIONS, STATES & UNION TERRITORIES | ARUPR        | ARUNACHAL PRADESH                                   |
|  | BHR          | BIHAR   |
|  | CHTGH        | CHHATTISGARH  |
|  | COTL AP      | COASTAL ANDHRA PRADESH                              |
|  | COTL KRNTK   | COASTAL KARNATAKA                                   |
|  | COTL ORS     | COASTAL ORISSA                                      |
|  | GUJ          | GUJARAT   |
|  | GWB          | GANGETIC WEST BENGAL                                |
|  | HARY         | HARYANA   |
|  | DLH          | DELHI   |
|  | HP           | HIMACHAL PRADESH                                    |
|  | J&K          | JAMMU AND KASHMIR                                   |
|  | JHRKND       | JHARKHAND   |

|                      |                        |                                     |
|----------------------|------------------------|-------------------------------------|
|                      | <b>KER</b>             | <b>KERALA</b>                       |
|                      | <b>KKN</b>             | <b>KONKAN</b>                       |
|                      | <b>LKSDP</b>           | <b>LAKSHADWEEP</b>                  |
|                      | <b>M MAHA</b>          | <b>MADHYA MAHARASHTRA</b>           |
|                      | <b>MAHA</b>            | <b>MAHARASHTRA</b>                  |
|                      | <b>MANI</b>            | <b>MANIPUR</b>                      |
|                      | <b>MEGHA</b>           | <b>MEGHALAYA</b>                    |
|                      | <b>MIZO</b>            | <b>MIZORAM</b>                      |
|                      | <b>MP</b>              | <b>MADHYA PRADESH</b>               |
|                      | <b>MRTHWD</b>          | <b>MARATHWADA</b>                   |
|                      | <b>NAGA</b>            | <b>NAGALAND</b>                     |
|                      | <b>N COTL AP</b>       | <b>NORTH COASTAL ANDHRA PRADESH</b> |
|                      | <b>NIK</b>             | <b>NORTH INTERIOR KARNATAKA</b>     |
|                      | <b>ORS</b>             | <b>ORISSA</b>                       |
|                      | <b>PJB</b>             | <b>PUNJAB</b>                       |
|                      | <b>RAJ</b>             | <b>RAJASTHAN</b>                    |
|                      | <b>RYLSM</b>           | <b>RAYALASEEMA</b>                  |
|                      | <b>SAU &amp; KUTCH</b> | <b>SAURASHTRA &amp; KUTCH</b>       |
|                      | <b>SHWB</b>            | <b>SUB-HIMALAYAN WEST BENGAL</b>    |
|                      | <b>SIK</b>             | <b>SOUTH INTERIOR KARNATAKA</b>     |
|                      | <b>SKM</b>             | <b>SIKKIM</b>                       |
|                      | <b>TLNGN</b>           | <b>TELANGANA</b>                    |
|                      | <b>TN</b>              | <b>TAMIL NADU</b>                   |
|                      | <b>TRP</b>             | <b>TRIPURA</b>                      |
|                      | <b>UP</b>              | <b>UTTAR PRADESH</b>                |
|                      | <b>UTRKND</b>          | <b>UTTARAKHAND</b>                  |
|                      | <b>VID</b>             | <b>VIDHARBHA</b>                    |
|                      | <b>SHWB</b>            | <b>SUB HIMALAYAN WEST BENGAL</b>    |
|                      | <b>GWB</b>             | <b>GANGETIC WEST BENGAL</b>         |
|                      | <b>ARSEA</b>           | <b>ARABIAN SEA</b>                  |
|                      | <b>ILS</b>             | <b>ISLANDS</b>                      |
| <b>MISCELLANEOUS</b> | <b>ASSW</b>            | <b>IN ASSOCIATION WITH</b>          |
|                      | <b>ASSTD</b>           | <b>ASSOCIATED</b>                   |
|                      | <b>LLC</b>             | <b>LOW LEVEL CIRCULATION</b>        |
|                      | <b>EMBDD</b>           | <b>EMBEDDED</b>                     |
|                      | <b>N/HOOD</b>          | <b>NEIGHBOURHOOD</b>                |
|                      | <b>EXT</b>             | <b>EXTREME</b>                      |