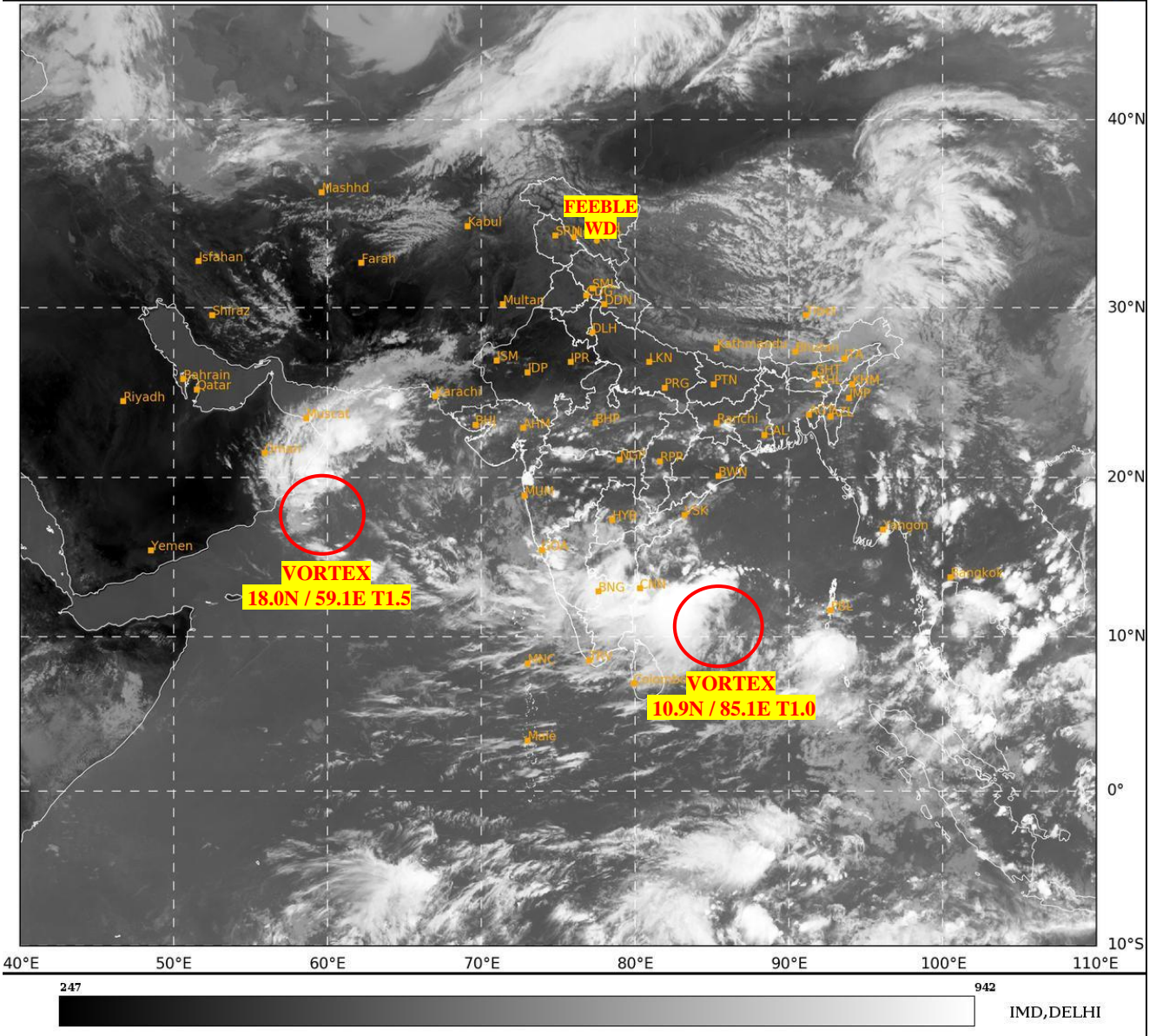




**SATELLITE BULLETIN BASED ON SATELLITE  
IMAGERIES AND PRODUCTS**  
**15.10.2024 TIME 0900 UTC**

SAT : INSAT-3DR IMG  
IMG\_TIR1 10.8 um  
LIC Mercator

15-10-2024/(0845 to 0912) GMT  
15-10-2024/(1415 to 1442) IST



TCIN50 DEMS 150900

SATELLITE BULLETIN BASED ON INSAT-3DR PIC OF 150845 UTC (.)

REGION COVERED BETWEEN LAT 50.0°N TO 35.0°S AND LONG 40.0°E TO 125.0°E (.)

**SALIENT FEATURES:-**

**VORTEX OVER CENTRAL PARTS OF SOUTH BAY:-**

VORTEX OVER CENTRAL PARTS OF SOUTH BAY CENTERED WITHIN HALF A DEGREE OF **10.9N / 85.1E** (.) INTENSITY **T1.0** (.) (.) ASSTD SCT TO BKN LOW/MED CLOUDS WITH EMBDD INT TO V INT CONVTN OVER WC BAY SOUTH BAY (MIMIMUM **CTT MINUS 80-93** DEG CEL) (.)

**VORTEX OVER WEST CENTRAL ARABIAN SEA:-**

VORTEX OVER WC ARSEA CENTERED WITHIN HALF A DEGREE OF **18.0N / 59.1E** (.) INTENSITY **T1.5** (.) ASSTD SCT TO BKN LOW/MED CLOUDS WITH EMBDD INT TO V INT CONVTN OVER WC & NORTH ARSEA OMAN (MIMIMUM **CTT MINUS 75-80** DEG CEL) (.)

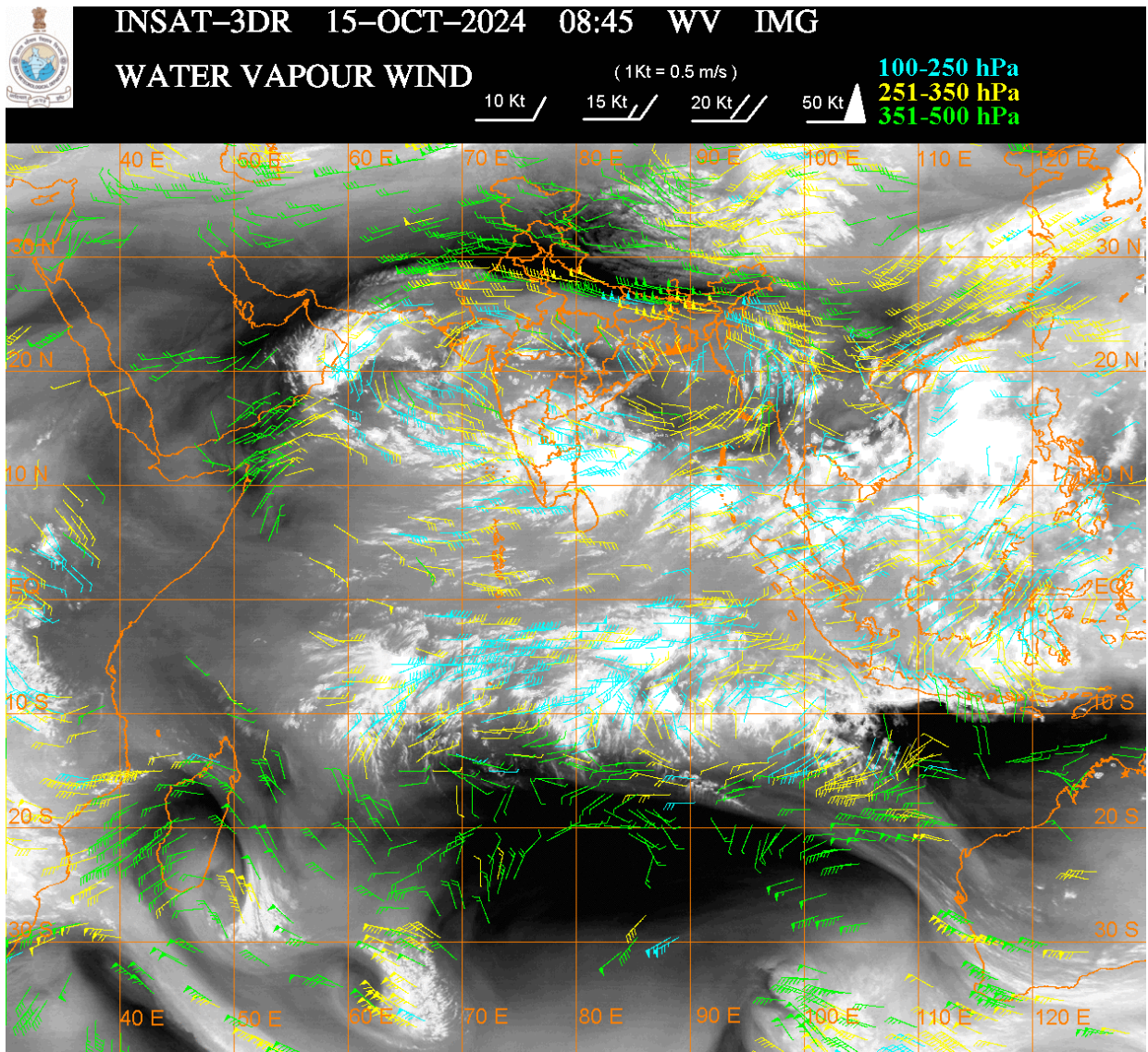
**FEEBLE WESTERN DISTURBANCE (FEEBLE WD):-**

SCT MULTILAYERED CLOUDS OVER NORTH LADAKH TIBET ADJ CHINA IN ASSW **FEEBLE WD** OVER THE AREA (.)

**CONVECTIVE / THUNDERSTORM ACTIVITY:-**

**INTENSE TO VERY INTENSE CONVECTIVE / THUNDERSTORM ACTIVITY OBSERVED OVER EXT SW MP SE GUJ S COTL AP S RYLSM TN NICOBAR ILS (MINIMUM CTT MINUS 75-90 DEG CEL) (.)**

**MODERATE TO INTENSE CONVECTIVE / THUNDERSTORM ACTIVITY OBSERVED OVER SE MP REST MAHA KRNTK S TLNGN N RYLSM N COTL AP KER LKSDP ILS ANDAMAN ILS (MINIMUM CTT MINUS 50-70 DEG CEL) (.)**



**CLOUDS DESCRIPTION WITHIN INDIA:-**

**NORTH:-**

**ISOL TO SCT LOW/MED CLOUDS OVER LADAKH J&K HP UTRKND S UP (.)**

**EAST:-**

**SCT LOW/MED CLOUDS WITH EMBDD ISOL WK TO MOD CONVTN OVER JHRKND CHTGH ORS GWB SHWB SKM NORTH-EAST STATES & BD (.) SCT LOW/MED CLOUDS OVER BHR (.)**

**WEST:-**

**SCT LOW/MED CLOUDS WITH EMBDD ISOL INT TO V INT CONVTN OVER SW MP SE GUJ (.) SCT LOW/MED CLOUDS WITH EMBDD ISOL WK TO MOD CONVTN OVER S RAJ SE MP GUJ MAHA GOA (.)SCT LOW/MED CLOUDS OVER REST MP N RAJ (.)**

**SOUTH:-**

**SCT TO BKN LOW/MED CLOUDS WITH EMBDD INT TO V INT CONVTN OVER S RYLSM S COTL AP TN NICOBAR ILS (.) SCT LOW/MED CLOUDS WITH EMBDD MOD TO INT CONVTN OVER KRNTK S TLNGN N RYLSM N COTL AP KER LKSDP ILS ANDAMAN ILS AND ISOL WK CONVTN OVER N TLNGN (.)**

**ARABIAN SEA:-**

SCT TO BKN LOW/MED CLOUDS WITH EMBDD INT TO V INT CONVTN OVER NORTH & CENTRAL ARSEA (MINIMUM **CTT MINUS 75-80 DEG CEL**) (.) SCT LOW/MED CLOUDS WITH EMBDD MOD TO INT CONVTN OVER SE ARSEA LKSDP ILS AREA MALDIVES & COMORIN AREA (.)

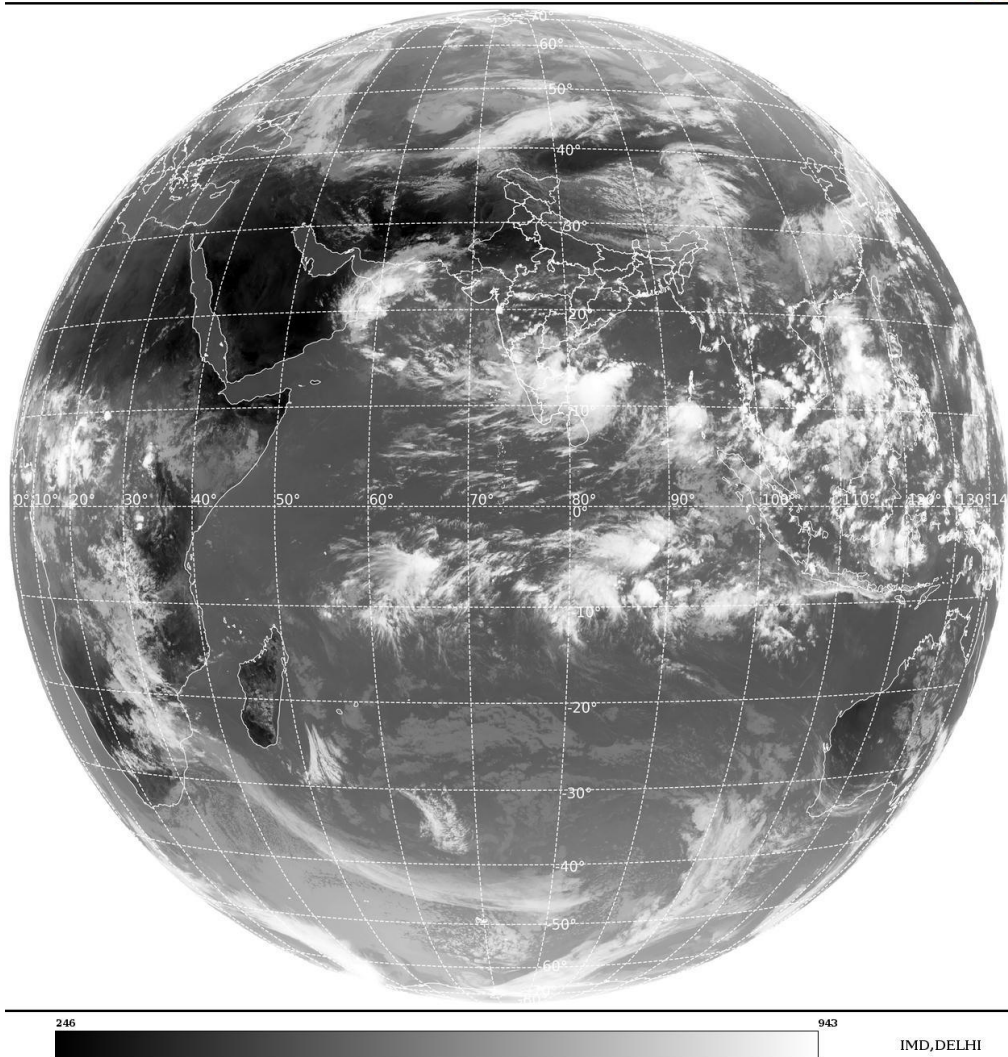
**BAY OF BENGAL & ANDAMAN SEA:-**

SCT TO BKN LOW/MED CLOUDS WITH EMBDD INT TO V INT CONVTN OVER WC BAY SOUTH BAY & ANDAMAN SEA (MINIMUM **CTT MINUS 75-93 DEG CEL**) (.) SCT LOW/MED CLOUDS WITH EMBDD MOD TO INT CONVTN OVER NW BAY (.)

**CLOUDS DESCRIPTION OUTSIDE INDIA:-**

SAT : INSAT-3DR IMG  
Thermal Infrared1 Count 10.8 um  
L1B FULL DISK

15-10-2024/(0845 to 0912) GMT  
15-10-2024/(1415 to 1442) IST



SCT LOW/MED CLOUDS WITH EMBDD MOD TO INT CONVTN OVER SRI LANKA PALK STR GULF OF MANNAR MALDIVES S PAK TIBET CHINA YELLOW SEA EAST CHINA SEA TAIWAN MYANMAR THAILAND GULF OF THAILAND CAMBODIA LAOS VIETNAM GULF OF TONKIN HAINAN SUMATRA STR OF MALACCA MALAYSIA BORNEO SOUTH CHINA SEA JAVA ILS & SEA CELEBES ILS & SEA PHILIPPINES SULU SEA AND OVER INDIAN OCEAN BET LAT 5.0N TO 15.0S LONG 55.0E TO 110.0E (.)

TOO 15/1540 HRS IST=

NNNN

**LEGEND:-**

|        |       |   |
|--------|-------|---|
| REGION | NORTH | J&K HP PJB HARY DLH UP UTRKND                     |
|        | EAST  | BHR JHRKND CHTGH ORS WB<br>SKM NORTH- EAST STATES |

|   |                        |  |
|---|------------------------|--|
|   | <b>WEST</b>            | <b>RAJ MP GUJ MAHA GOA</b>                                       |
|   | <b>SOUTH</b>           | <b>TLNGN AP KRNTK KER TN LKSDP<br/>ANDAMAN &amp; NICOBAR ILS</b> |
| <b>CLOUD DISTRIBUTION</b>   | <b>ISOL</b>            | <b>ISOLATED (LESS THAN 25%)</b>                                  |
|   | <b>SCT</b>             | <b>SCATTERED (25 TO 50%)</b>                                     |
|   | <b>BKN</b>             | <b>BROKEN (51 TO 75%)</b>  |
|   | <b>SLD</b>             | <b>SOLID (GREATER THAN 75%)</b>                                  |
| <b>CLOUDS TOP TEMPERATURE</b>   | <b>CTT</b>             | <b>CLOUD TOP TEMPERATURE</b>                                     |
| <b>CONVECTION</b>   | <b>WK CONVTN</b>       | <b>WEAK CONVECTION<br/>(CTT GREATER THAN -25°C)</b>              |
|   | <b>MOD CONVTN</b>      | <b>MODERATE CONVECTION<br/>(CTT BETWEEN -25°C TO -40°C)</b>      |
|   | <b>INT CONVTN</b>      | <b>INTENSE CONVECTION<br/>(CTT BETWEEN -41°C TO -70°C)</b>       |
|   | <b>V INT CONVTN</b>    | <b>VERY INTENSE CONVECTION<br/>(CTT LESS THAN -70°C)</b>         |
| <b>METEOROLOGICAL<br/>SUB- DIVISIONS,<br/>STATES &amp; UNION<br/>TERITORIES</b> | <b>ARUPR</b>           | <b>ARUNACHAL PRADESH</b>   |
|   | <b>BHR</b>             | <b>BIHAR</b>   |
|   | <b>CHTGH</b>           | <b>CHHATTISGARH</b>  |
|   | <b>COTL AP</b>         | <b>COASTAL ANDHRA PRADESH</b>                                    |
|   | <b>COTL KRNTK</b>      | <b>COASTAL KARNATAKA</b>   |
|   | <b>COTL ORS</b>        | <b>COASTAL ORISSA</b>  |
|   | <b>GUJ</b>             | <b>GUJARAT</b>   |
|   | <b>GWB</b>             | <b>GANGETIC WEST BENGAL</b>                                      |
|   | <b>HARY</b>            | <b>HARYANA</b>   |
|   | <b>DLH</b>             | <b>DELHI</b>   |
|   | <b>HP</b>              | <b>HIMACHAL PRADESH</b>  |
|   | <b>J&amp;K</b>         | <b>JAMMU AND KASHMIR</b>   |
|   | <b>JHRKND</b>          | <b>JHARKHAND</b>   |
|   | <b>KER</b>             | <b>KERALA</b>  |
|   | <b>KKN</b>             | <b>KONKAN</b>  |
|   | <b>LKSDP</b>           | <b>LAKSHADWEEP</b>   |
|   | <b>M MAHA</b>          | <b>MADHYA MAHARASHTRA</b>  |
|   | <b>MAHA</b>            | <b>MAHARASHTRA</b>   |
|   | <b>MANI</b>            | <b>MANIPUR</b>   |
|   | <b>MEGHA</b>           | <b>MEGHALAYA</b>   |
|   | <b>MIZO</b>            | <b>MIZORAM</b>   |
| <b>MP</b>   | <b>MADHYA PRADESH</b>  |  |
|   | <b>MRTHWD</b>          | <b>MARATHWADA</b>  |
|   | <b>NAGA</b>            | <b>NAGALAND</b>  |
|   | <b>N COTL AP</b>       | <b>NORTH COASTAL ANDHRA<br/>PRADESH</b>                          |
|   | <b>NIK</b>             | <b>NORTH INTERIOR KARNATAKA</b>                                  |
|   | <b>ORS</b>             | <b>ORISSA</b>  |
|   | <b>PJB</b>             | <b>PUNJAB</b>  |
|   | <b>RAJ</b>             | <b>RAJASTHAN</b>   |
|   | <b>RYLSM</b>           | <b>RAYALASEEMA</b>   |
|   | <b>SAU &amp; KUTCH</b> | <b>SAURASHTRA &amp; KUTCH</b>                                    |

|                      |               |                                  |
|----------------------|---------------|----------------------------------|
|                      | <b>SHWB</b>   | <b>SUB-HIMALAYAN WEST BENGAL</b> |
|                      | <b>SIK</b>    | <b>SOUTH INTERIOR KARNATAKA</b>  |
|                      | <b>SKM</b>    | <b>SIKKIM</b>                    |
|                      | <b>TLNGN</b>  | <b>TELANGANA</b>                 |
|                      | <b>TN</b>     | <b>TAMIL NADU</b>                |
|                      | <b>TRP</b>    | <b>TRIPURA</b>                   |
|                      | <b>UP</b>     | <b>UTTAR PRADESH</b>             |
|                      | <b>UTRKND</b> | <b>UTTARAKHAND</b>               |
|                      | <b>VID</b>    | <b>VIDHARBHA</b>                 |
|                      | <b>SHWB</b>   | <b>SUB HIMALAYAN WEST BENGAL</b> |
|                      | <b>GWB</b>    | <b>GANGETIC WEST BENGAL</b>      |
|                      | <b>ARSEA</b>  | <b>ARABIAN SEA</b>               |
|                      | <b>ILS</b>    | <b>ISLANDS</b>                   |
| <b>MISCELLANEOUS</b> | <b>ASSW</b>   | <b>IN ASSOCIATION WITH</b>       |
|                      | <b>ASSTD</b>  | <b>ASSOCIATED</b>                |
|                      | <b>LLC</b>    | <b>LOW LEVEL CIRCULATION</b>     |
|                      | <b>EMBDD</b>  | <b>EMBEDDED</b>                  |
|                      | <b>N/HOOD</b> | <b>NEIGHBOURHOOD</b>             |
|                      | <b>EXT</b>    | <b>EXTREME</b>                   |