



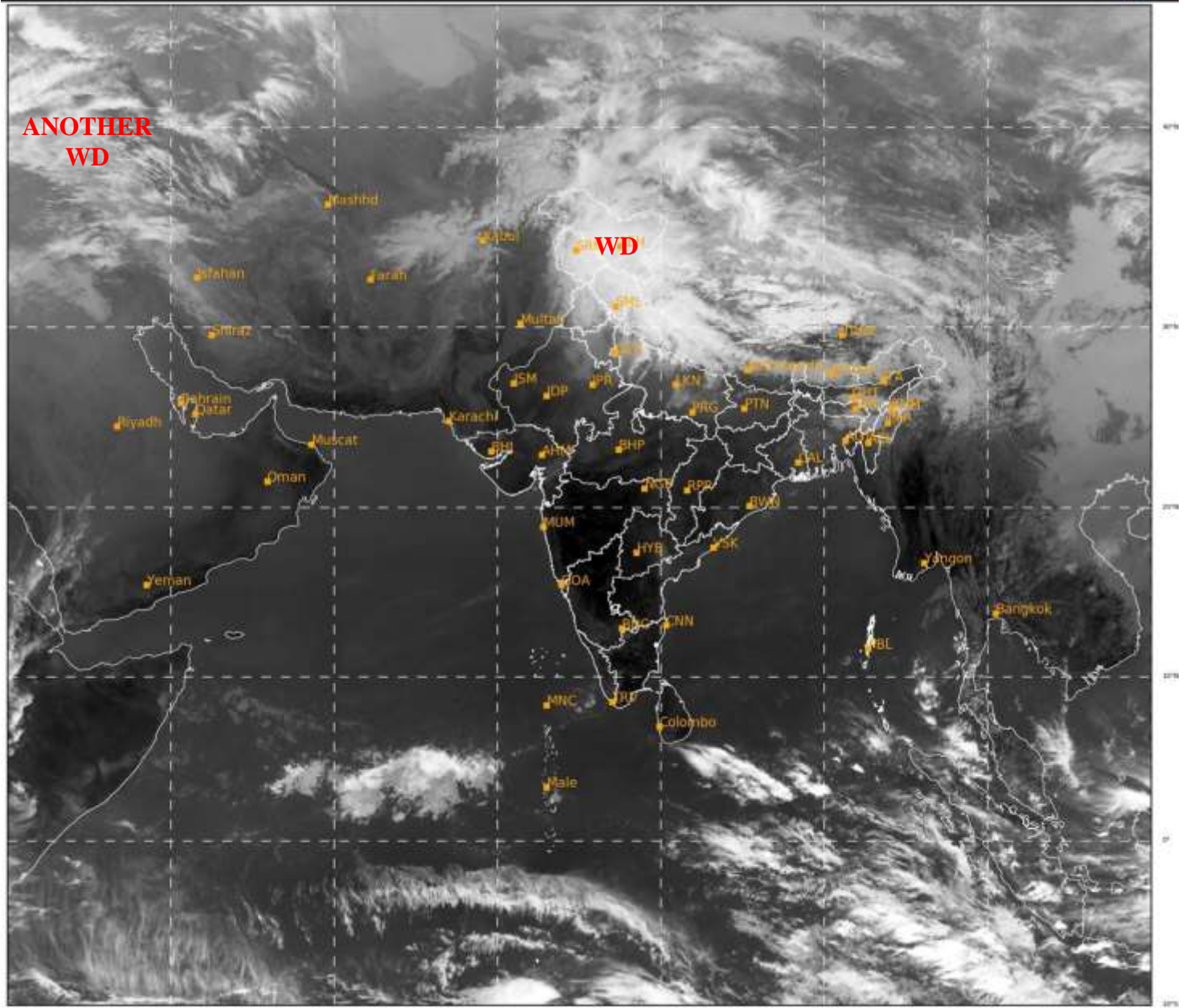
भारत मौसम विज्ञान विभाग
पृथ्वी विज्ञान मंत्रालय
India Meteorological Department
Ministry of Earth Sciences



**SATELLITE BULLETIN BASED ON SATELLITE
IMAGERIES AND PRODUCTS**
03.02.2022 TIME 0600 UTC

SAT : INSAT-3D IMG
IMG_TIR1 10.8 um
LIC Mercator

03-02-2022/(0600 to 0627) GMT
03-02-2022/(1130 to 1157) IST



409

937

IMD, DELHI

TCIN50 DEMS 030600

SATELLITE BULLETIN BASED ON INSAT-3D PIC OF 030600 UTC (.)

REGION COVERED BETWEEN LAT 50.0°N TO 30.0°S AND LONG 40.0°E TO 125.0°E (.)

SALIENT FEATURES:-

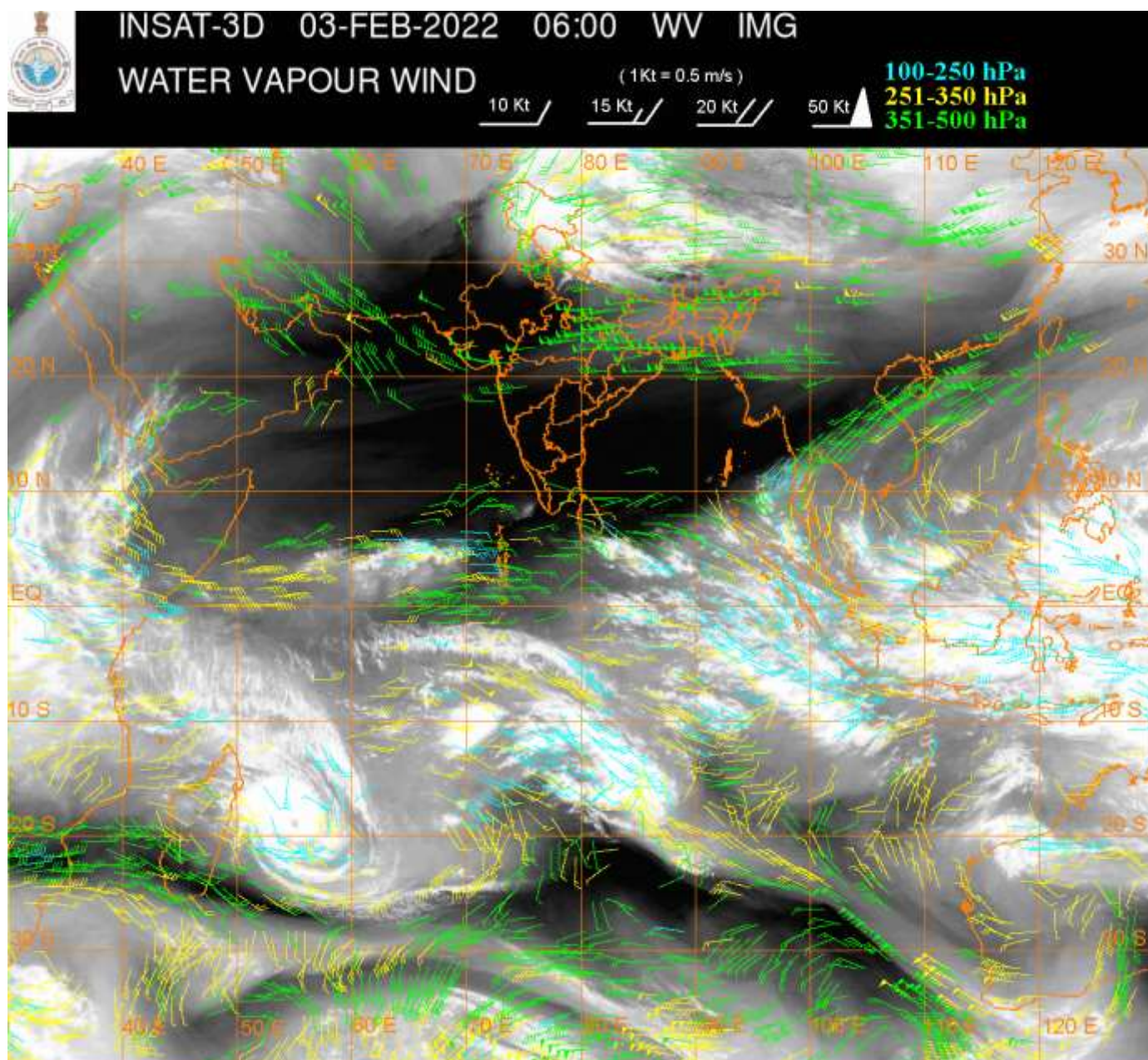
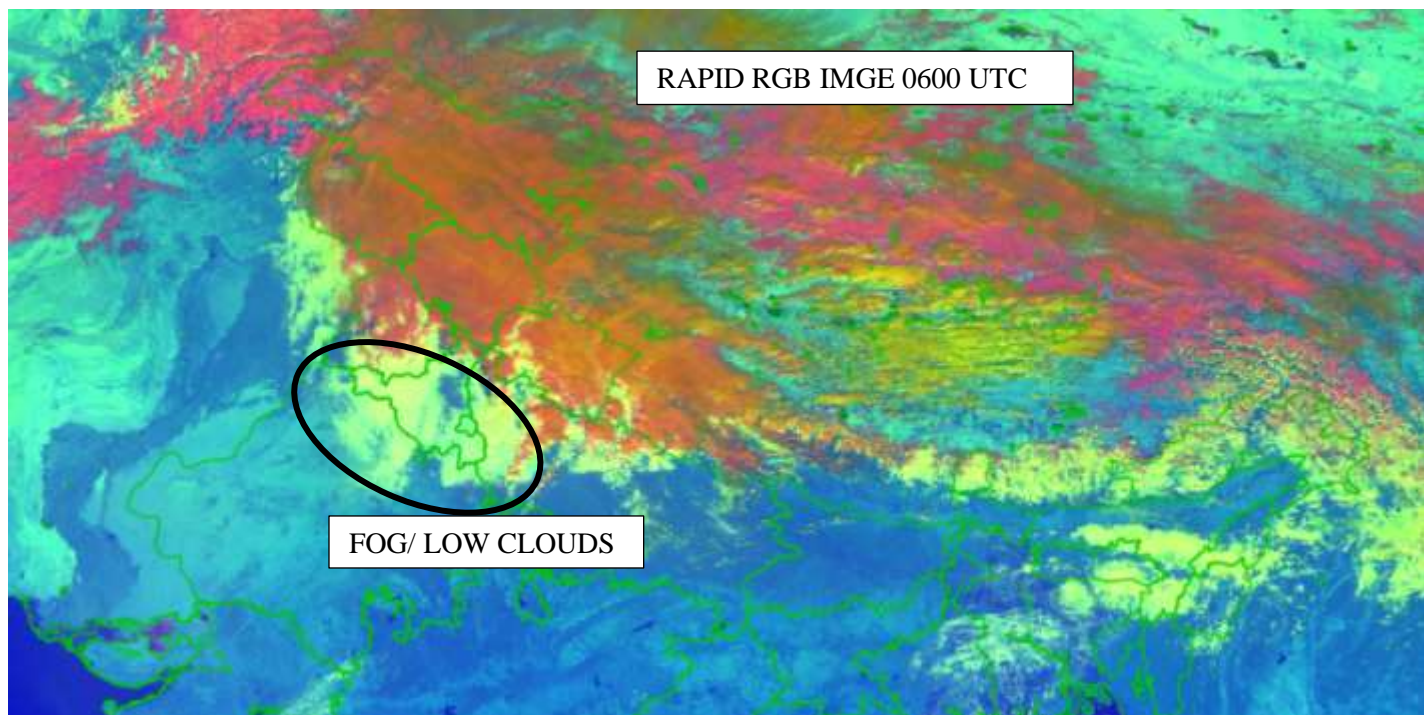
WESTERN DISTURBANCE (WD):-

SCT MULTILAYERED CLOUDS OVER EXTREME NE PAK LADAKH J&K HP UTRKND PJB HARY DLH N UP NEPAL TIBET ADJ CHINA IN ASSW **WD** OVER THE AREA (.)

SCT MULTILAYERED CLOUDS OVER CASPIAN SEA NW IRAN AND N/HOOD IN ASSW **ANOTHER WD** OVER THE AREA (.)

FOG/LOW CLOUDS:-

DAY MICROPHYSICS PRODUCT OF INSAT -3D AT 0600 UTC INDICATES SCT FOG/LOW CLOUDS OVER EXTREME N RAJ HARY ADJ NW UP & DLH (.)



CLOUDS DESCRIPTION WITHIN INDIA:-

NORTH:-

SCT TO BKN LOW/MED CLOUDS WITH EMBDD MOD TO INT CONVTN OVER LADAKH J&K HP UTRKND ADJ NW UP PJB AND WK TO MOD CONVTN OVER NE HARY NE UP (.) SCT LOW/MED CLOUDS OVER HARY DLH REST UP (.)

EAST:-

SCT LOW/MED CLOUDS OVER WITH EMBDD ISOL WK TO MOD CONVTN OVER SKM ARUPR ASSAM MEGHA NAGA MANI (.) SCT LOW/MED CLOUDS OVER NW BHR E ORS GWB SHWB REST NE STATES (.)

WEST:-

SCT LOW/MED CLOUDS OVER EXTREME N RAJ SE GUJ (.)

SOUTH:-

SCT LOW/MED CLOUDS WITH EMBDD ISOL WK CONVTN OVER NICOBAR ILS (.) SCT LOW/MED CLOUDS OVER E TLNGN N COTL AP SIK KER W TN & ANDAMAN ILS (.)

ARABIAN SEA:-

SCT LOW/MED CLOUDS OVER SOUTH ARSEA (.)

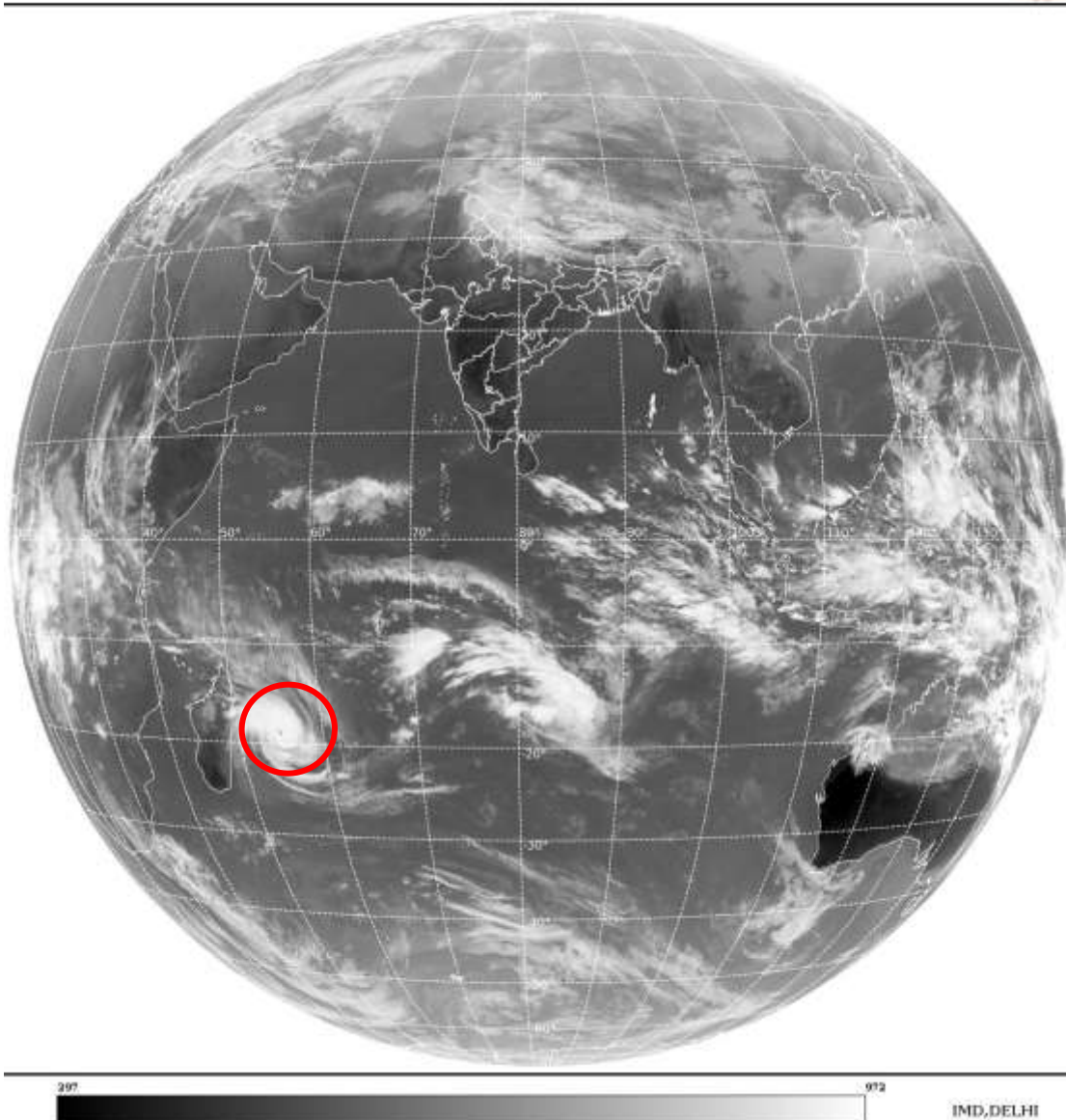
BAY OF BENGAL & ANDAMAN SEA:-

SCT LOW/MED CLOUDS WITH EMBDD MOD TO INT CONVTN OVER EXTREME S BAY ADJ EQUATORIAL INDIA OCEAN & SOUTH ANDAMAN SEA (.) SCT LOW/MED CLOUDS OVER REST SOUTH BAY (.)

CLOUDS DESCRIPTION OUTSIDE INDIA:-

SAT : INSAT-3D IMG
Thermal Infrared1 Count 10.8 um
LIB FULL DISK

03-02-2022/(0600 to 0627) GMT
03-02-2022/(1130 to 1157) IST



VORTEX (BATSIRAI) OVER SOUTH INDIAN OCEAN:-

VORTEX (**BATSIRAI**) OVER SOUTH INDIAN OCEAN CENTERED NEAR **19.0S / 55.3E** (.) INTENSITY **T5.5/6.0** (.) ASSTD BKN LOW/MED CLOUDS WITH EMBDD INT TO V INT CONVTN OVER AREA BET LAT 15.0S TO 22.0S LONG 52.0E TO 58.0E (.)

SCT LOW/MED CLOUDS WITH EMBDD MOD TO INT CONVTN OVER NEPAL TIBET CHINA SUMATRA STR OF MALACCA MALASIYA BORNEO ADJ SOUTH CHINA SEA JAVA SEA CELEBES ILS & SEA PHILIPPINES E CHIN ASEA N MADAGASCAR N MOZAMBIQUE CHANNEL AND OVER INDIAN OCEAN BET LAT 5.0N TO 10.0S LONG 60.0E TO 105.0E AND BET LAT 10.0S TO 25.0S LONG 50.0E TO 90.0E (.)

TOO 03/1240 HRS IST=

NNNN

LEGEND:-

REGION	NORTH	J&K HP PJB HARY DLH UP UTRKND
	EAST	BHR JHRKND CHTGH ORS WB SKM NORTH- EAST STATES
	WEST	RAJ MP GUJ MAHA GOA
	SOUTH	TLNGN AP KRNTK KER TN LKSDP ANDAMAN & NICOBAR ILS

CLOUD DISTRIBUTION	ISOL	ISOLATED (LESS THAN 25%)
	SCT	SCATTERED (25 TO 50%)
	BKN	BROKEN (51 TO 75%)
	SLD	SOLID (GREATER THAN 75%)
CLOUDS TOP TEMPERATURE	CTT	CLOUD TOP TEMPERATURE
CONVECTION	WK CONVTN	WEAK CONVECTION (CTT GREATER THAN -25°C)
	MOD CONVTN	MODERATE CONVECTION (CTT BETWEEN -25°C TO -40°C)
	INT CONVTN	INTENSE CONVECTION (CTT BETWEEN -41°C TO -70°C)
	V INT CONVTN	VERY INTENSE CONVECTION (CTT LESS THAN -70°C)
METEOROLOGICAL SUB-DIVISIONS, STATES & UNION TERRITORIES	ARUPR	ARUNACHAL PRADESH
	BHR	BIHAR
	CHTGH	CHHATTISGARH
	COTL AP	COASTAL ANDHRA PRADESH
	COTL KRNTK	COASTAL KARNATAKA
	COTL ORS	COASTAL ORISSA
	GUJ	GUJARAT
	GWB	GANGETIC WEST BENGAL
	HARY	HARYANA
	DLH	DELHI
	HP	HIMACHAL PRADESH
	J&K	JAMMU AND KASHMIR
	JHRKND	JHARKHAND
	KER	KERALA
KKN	KONKAN	

	LKSDP	LAKSHADWEEP
	M MAHA	MADHYA MAHARASHTRA
	MAHA	MAHARASHTRA
	MANI	MANIPUR
	MEGHA	MEGHALAYA
	MIZO	MIZORAM
	MP	MADHYA PRADESH
	MRTHWD	MARATHWADA
	NAGA	NAGALAND
	N COTL AP	NORTH COASTAL ANDHRA PRADESH
	NIK	NORTH INTERIOR KARNATAKA
	ORS	ORISSA
	PJB	PUNJAB
	RAJ	RAJASTHAN
	RYLSM	RAYALASEEMA
	SAU & KUTCH	SAURASHTRA & KUTCH
	SHWB	SUB-HIMALAYAN WEST BENGAL
	SIK	SOUTH INTERIOR KARNATAKA
	SKM	SIKKIM
	TLNGN	TELANGANA
	TN	TAMIL NADU
	TRP	TRIPURA
	UP	UTTAR PRADESH
	UTRKND	UTTARAKHAND
	VID	VIDHARBHA
	SHWB	SUB HIMALAYAN WEST BENGAL
	GWB	GANGETIC WEST BENGAL
	ARSEA	ARABIAN SEA
	ILS	ISLANDS
MISCELLANEOUS	ASSW	IN ASSOCIATION WITH
	ASSTD	ASSOCIATED
	LLC	LOW LEVEL CIRCULATION
	EMBDD	EMBEDDED
	N/HOOD	NEIGHBOURHOOD
	EXT	EXTREME