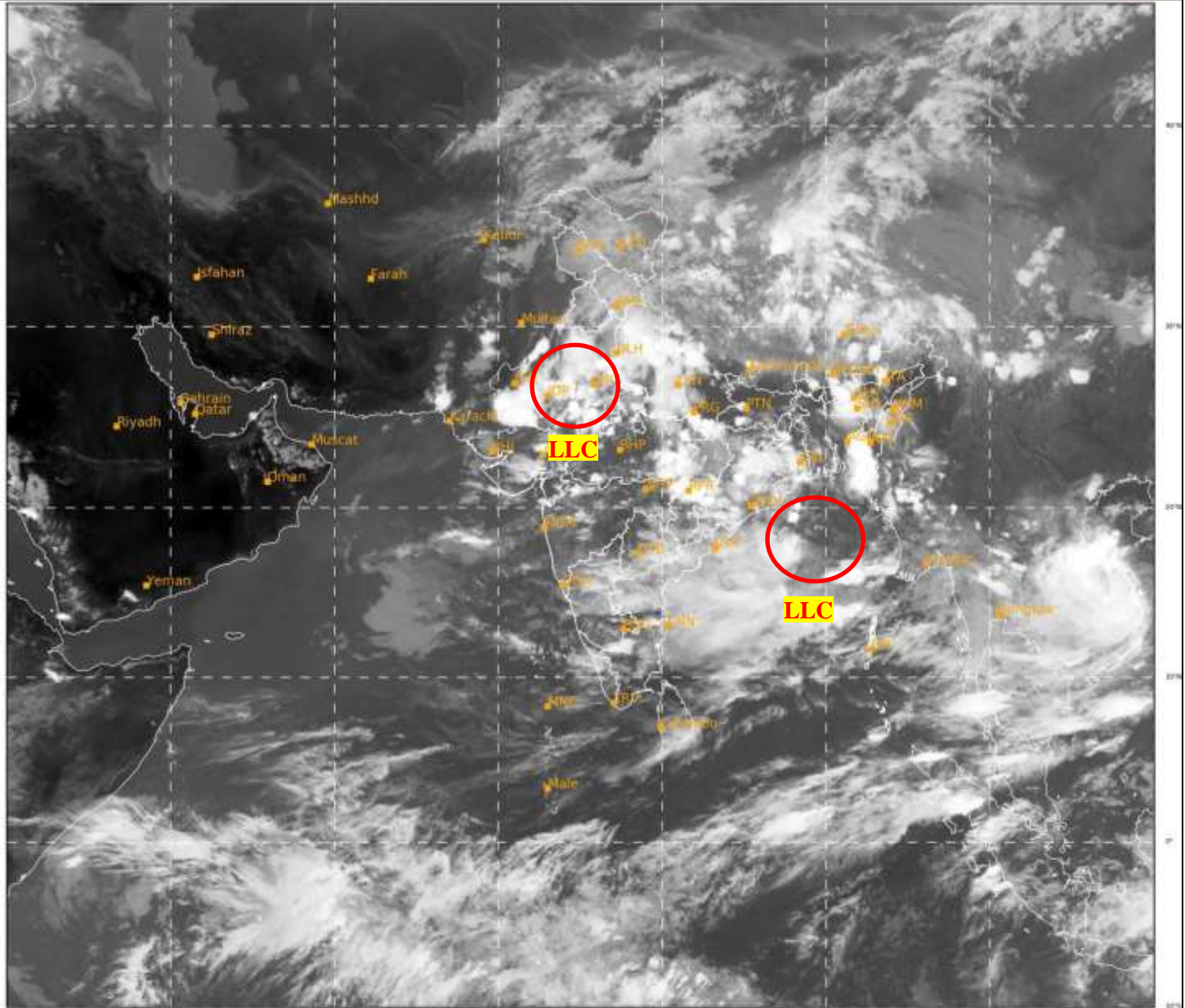




SATELLITE BULLETIN BASED ON SATELLITE
IMAGERIES AND PRODUCTS
11.09.2021 TIME 1200 UTC

SAT : INSAT-3D IMG
IMG_TIR1 10.8 um
LIC Mercator

11-09-2021/(1200 to 1226) GMT
11-09-2021/(1730 to 1756) IST



341

943

IMD, DELHI

TCIN50 DEMS 111200

SATELLITE BULLETIN BASED ON INSAT-3D PIC OF 111200 UTC (.)

REGION COVERED BETWEEN LAT 50.0°N TO 30.0°S AND LONG 40.0°E TO 125.0°E (.)

SALIENT FEATURES:-

LLC OVER EAST RAJASTHAN & N/HOOD:-

LLC OVER E RAJ & N/HOOD (.) ASSTD SCT TO BKN LOW/MED CLOUDS WITH EMBDD INT TO V INT CONVTN OVER RAJ ADJ S HARY & ADJ NW MP (.) MINIMUM CTT MINUS 78 DEG CEL (.)

LLC OVER EC ADJ NORTH CENTRAL BAY:-

SCT TO BKN LOW/MED CLOUDS WITH EMBDD INT TO V INT CONVTN OVER EC ADJ NE BAY BET LAT 16.0N TO 20.0N LONG 87.0E TO 91.0E IN ASSW LOW LEVEL CIRCULATION (LLC) OVER THE AREA (.) MINIMUM CTT MINUS 87 DEG CEL (.)



INSAT-3D 11-SEP-2021 12:00 WV IMG

WATER VAPOUR WIND

(1Kt = 0.5 m/s)

10 Kt

15 Kt

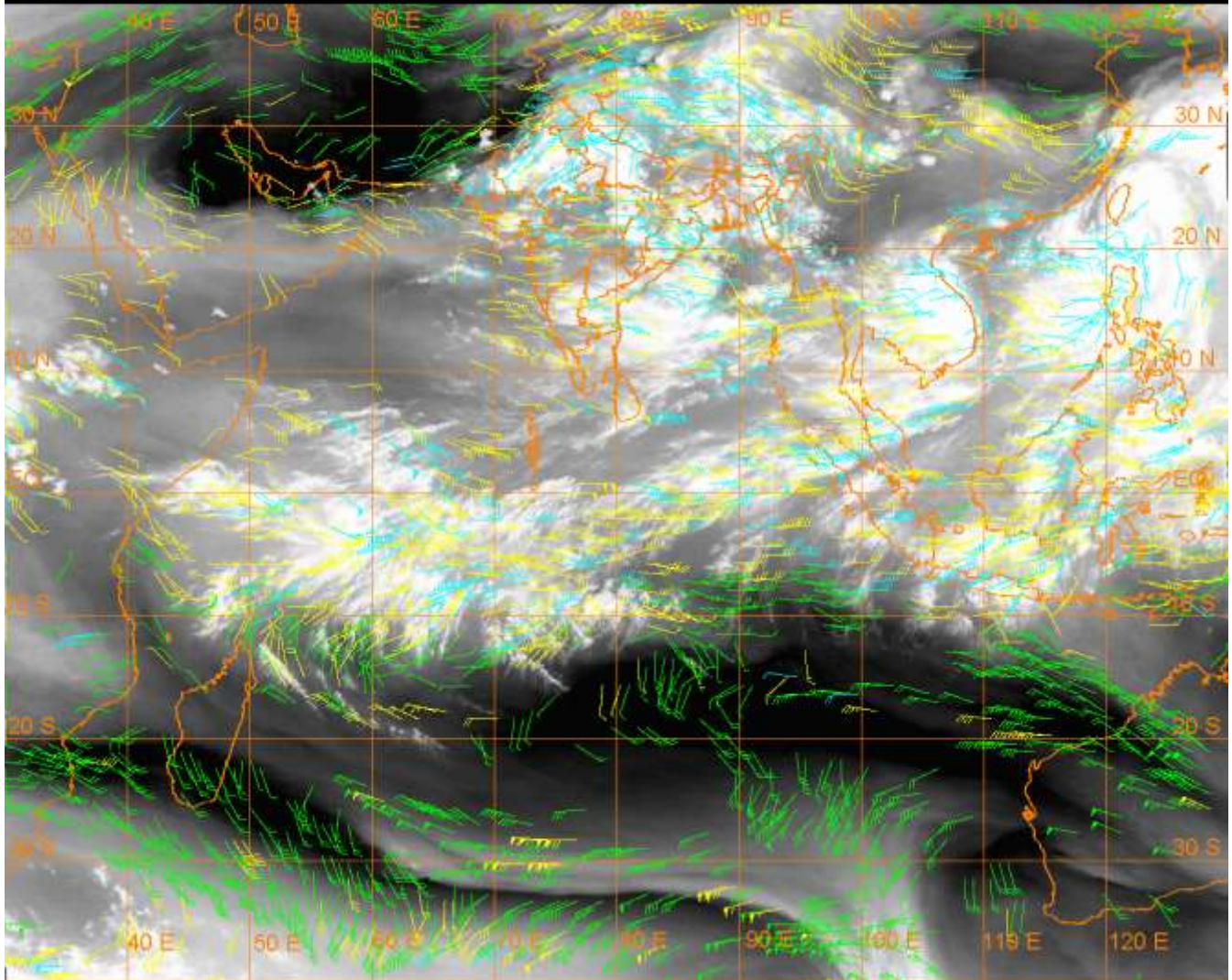
20 Kt

50 Kt

100-250 hPa

251-350 hPa

351-500 hPa



CLOUDS DESCRIPTION WITHIN INDIA:-

NORTH:-

BKN LOW/MED CLOUDS WITH EMBDD INT TO V INT CONVTN OVER NW UP (MINIMUM CTT MINUS 93 DEG CEL) SE UP (MINIMUM CTT MINUS 88 DEG CEL) (.) SCT LOW/MED CLOUDS WITH EMBDD MOD TO INT CONVTN OVER S UTRKND EXT S HARY C UP AND WK TO MOD CONVTN OVER LADAKH J&K HP N UTRKND PJB REST HARY DLH EXT NE UP (.)

EAST:-

SCT LOW/MED CLOUDS WITH EMBDD INT TO V INT CONVTN OVER SE JHRKND (MINIMUM CTT MINUS 78 DEG CEL) C CHTGH (MINIMUM CTT MINUS 93 DEG CEL) SW BHR (MINIMUM CTT MINUS 80 DEG CEL) NW ORS (MINIMUM CTT MINUS 89 DEG CEL) C MEGHA W ASSAM (MINIMUM CTT MINUS 85 DEG CEL) W ARUPR (MINIMUM CTT MINUS 74 DEG CEL) TRP & S MIZO (MINIMUM CTT MINUS 90 DEG CEL) (.) SCT LOW/MED CLOUDS WITH EMBDD MOD TO INT CONVTN OVER NC CHTGH REST ORS NE JHRKND C ADJ S GWB EXT N SHWB REST MEGHA AND ISOL WK TO MOD CONVTN OVER REST CHTGH REST JHRKND SE BHR SKM E ARUPR E ASSAM NAGA MANI (.)

WEST:-

SCT TO BKN LOW/MED CLOUDS WITH EMBDD INT TO V INT CONVTN OVER CENTRAL & EXT PARTS OF RAJ (MINIMUM CTT MINUS 93 DEG CEL) NW & EXT E MP (MINIMUM CTT MINUS 90 DEG CEL) NC GUJ (MINIMUM CTT MINUS 82 DEG CEL) AND MOD TO INT CONVTN REST RAJ SC GUJ EXT SW MP NORTH OF M MAHA (.) SCT LOW/MED CLOUDS WITH EMBDD ISOL WK TO MOD CONVTN OVER REST S MP N KKN VID (.) SCT LOW/MED CLOUDS OVER NW GUJ REST MAHA & GOA (.)

SOUTH:-

SCT LOW/MED CLOUDS WITH EMBDD MOD TO INT CONVTN OVER N COTL AP EXT E TLNGN C NIK EXT SOUTH SIK N KER EXT N TN AND WK TO MOD CONVTN OVER REST E TLNGN S COTL AP REST KRNTK REST N TN LKSDP ANDAMAN ILS (.) SCT LOW/MED CLOUDS OVER S KER S TN W TLNGN (.)

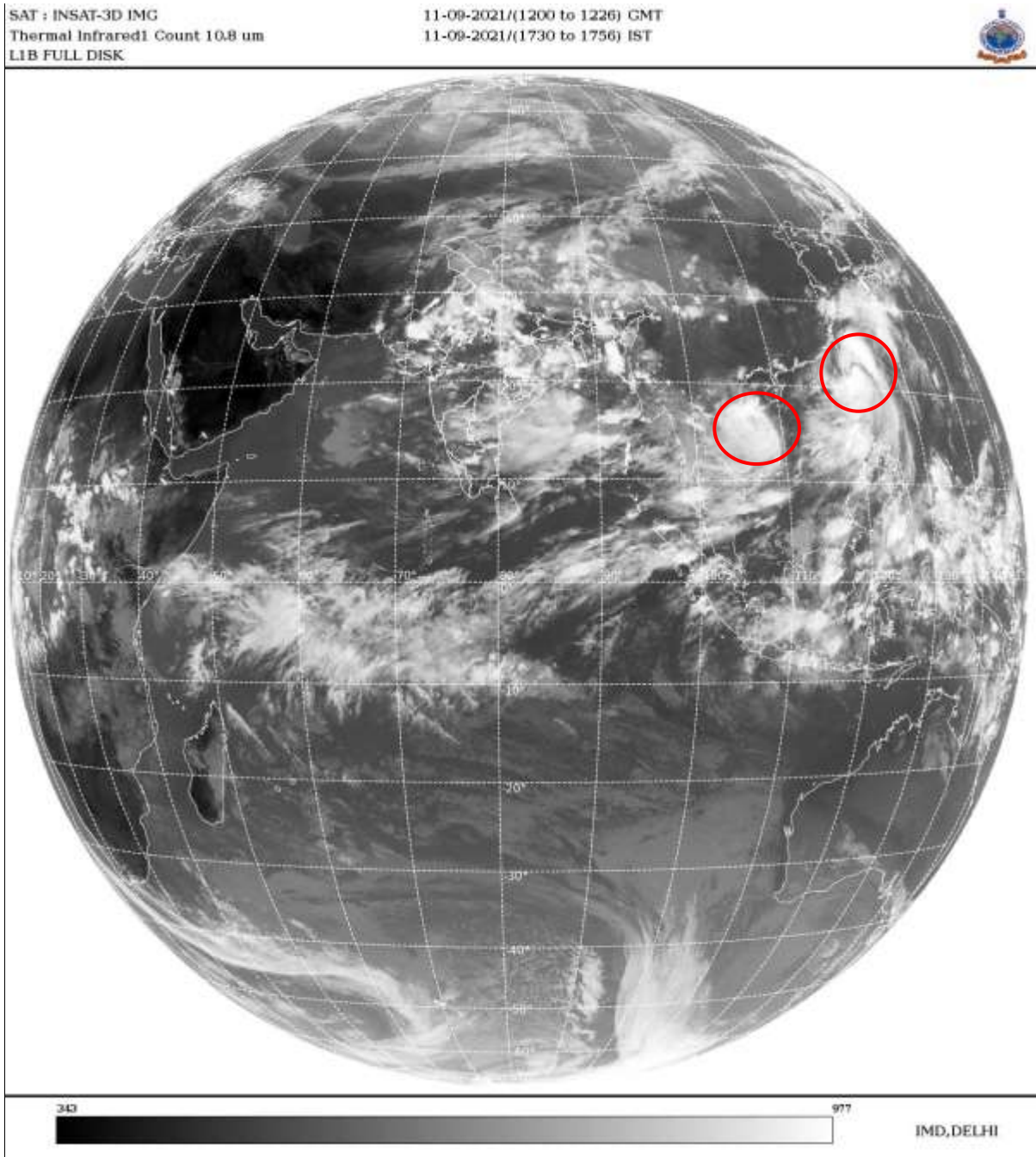
ARABIAN SEA:-

SCT LOW/MED CLOUDS WITH EMBDD ISOL MOD TO INT CONVTN OVER NE ARSEA OFF GUJ COAST NORTH PARTS OF EC ARSEA AND ISOL WK TO MOD CONVTN OVER REST E ARSEA (.)

BAY OF BENGAL & ANDAMAN SEA:-

BKN LOW/MED CLOUDS WITH EMBDD INT TO V INT CONVTN OVER EXT N BAY C ADJ S BAY (MINIMUM CTT MINUS 87 DEG CEL (.) SCT LOW/MED CLOUDSWITH EMBDD MOD TO INT CONVTN OVER REST S BAY N ANDAMAN SEA (.)

CLOUDS DESCRIPTION OUTSIDE INDIA:-



VORTEX (CONSON) OVER SOUTH CHINA SEA ADJ VIETNAM & N/HOOD:-

VORTEX (CONSON) OVER SOUTH CHINA SEA ADJ VIETNAM & N/HOOD CENTERED NEAR 15.2N / 109.5E (.) INTENSITY T 2.5 / 3.0 (.) ASSTD BKN LOW/MED CLOUDS WITH EMBDD INT TO V INT CONVTN OVER AREA BET LAT 13.5N TO 18.0N LONG 105.0E TO 108.5E & VIETNAM (.)

ANOTHER VORTEX (CHANTHU) OVER NW PHILIPPINES SEA & N/HOOD:-

VORTEX (CHANTHU) OVER NW PHILIPPINES SEA & N/HOOD CENTERED NEAR 21.8N / 121.8E (.) INTENSITY T 5.0 / 6.0 (.) ASSTD BKN TO SLD INT TO V INT CONVTN OVER AREA BET LAT 19.0N TO 25.5N LONG 119.0E TO 125.5E TAIWAN N PHILIPPINES ADJ S CHINA SEA (.)

SCT LOW/MED CLOUDS WITH EMBDD MOD TO INT CONVTN OVER E PAK E NEPAL BHUTAN TIBET CHINA MYANMAR THAILAND GULF OF THAILAND CAMBODIA LAOS VIETNAM GULF OF TONKIN SUMATRA STR OF MALACCA MALAY PENINSULA BORNEO S CHINA SEA JAVA ILS & SEA CELEBES ILS & SEA PHILIPPINES TAIWAN E CHINA SEA AND OVER INDIAN OCEAN BET LAT 5.0N TO 15.0S LONG 45.0E TO 98.0E (.)

LEGEND:-

| | | |
|---------------|--------------|--|
| REGION | NORTH | J&K HP PJB HARY DLH UP UTRKND |
| | EAST | BHR JHRKND CHTGH ORS WB SKMNORTH- EAST STATES |
| | WEST | RAJ MP GUJ MAHA GOA |
| | SOUTH | TLNGN AP KRNTK KER TN LKSDP ANDAMAN & NICOBAR ILS |

| | | |
|---|-----------------------|---|
| CLOUD DISTRIBUTION | ISOL | ISOLATED (LESS THAN 25%) |
| | SCT | SCATTERED (25 TO 50%) |
| | BKN | BROKEN (51 TO 75%) |
| | SLD | SOLID (GREATER THAN 75%) |
| CLOUDS TOP TEMPERATURE | CTT | CLOUD TOP TEMPERATURE |
| CONVECTION | WK CONVTN | WEAK CONVECTION (CTT GREATER THAN -25°C) |
| | MOD CONVTN | MODERATE CONVECTION (CTT BETWEEN -25°C TO -40°C) |
| | INT CONVTN | INTENSE CONVECTION (CTT BETWEEN -41°C TO -70°C) |
| | V INT CONVTN | VERY INTENSE CONVECTION (CTT LESS THAN -70°C) |
| METEOROLOGICAL SUB-DIVISIONS, STATES & UNION TERRITORIES | ARUPR | ARUNACHAL PRADESH |
| | BHR | BIHAR |
| | CHTGH | CHHATTISGARH |
| | COTL AP | COASTAL ANDHRA PRADESH |
| | COTL KRNTK | COASTAL KARNATAKA |
| | COTL ORS | COASTAL ORISSA |
| | GUJ | GUJARAT |
| | GWB | GANGETIC WEST BENGAL |
| | HARY | HARYANA |
| | DLH | DELHI |
| | HP | HIMACHAL PRADESH |
| | J&K | JAMMU AND KASHMIR |
| | JHRKND | JHARKHAND |
| | KER | KERALA |
| | KKN | KONKAN |
| | LKSDP | LAKSHADWEEP |
| | M MAHA | MADHYA MAHARASHTRA |
| | MAHA | MAHARASHTRA |
| | MANI | MANIPUR |
| | MEGHA | MEGHALAYA |
| MIZO | MIZORAM | |
| MP | MADHYA PRADESH | |

| | | |
|----------------------|------------------------|-------------------------------------|
| | MRTHWD | MARATHWADA |
| | NAGA | NAGALAND |
| | N COTL AP | NORTH COASTAL ANDHRA PRADESH |
| | NIK | NORTH INTERIOR KARNATAKA |
| | ORS | ORISSA |
| | PJB | PUNJAB |
| | RAJ | RAJASTHAN |
| | RYLSM | RAYALASEEMA |
| | SAU & KUTCH | SAURASHTRA & KUTCH |
| | SHWB | SUB-HIMALAYAN WEST BENGAL |
| | SIK | SOUTH INTERIOR KARNATAKA |
| | SKM | SIKKIM |
| | TLNGN | TELANGANA |
| | TN | TAMIL NADU |
| | TRP | TRIPURA |
| | UP | UTTAR PRADESH |
| | UTRKN D | UTTARAKHAND |
| | VID | VIDHARBHA |
| | SHWB | SUB HIMALAYAN WEST BENGAL |
| | GWB | GANGETIC WEST BENGAL |
| | ARSEA | ARABIAN SEA |
| | ILS | ISLANDS |
| MISCELLANEOUS | ASSW | IN ASSOCIATION WITH |
| | ASSTD | ASSOCIATED |
| | LLC | LOW LEVEL CIRCULATION |
| | EMBDD | EMBEDDED |
| | N/HOOD | NEIGHBOURHOOD |
| | EXT | EXTREME |