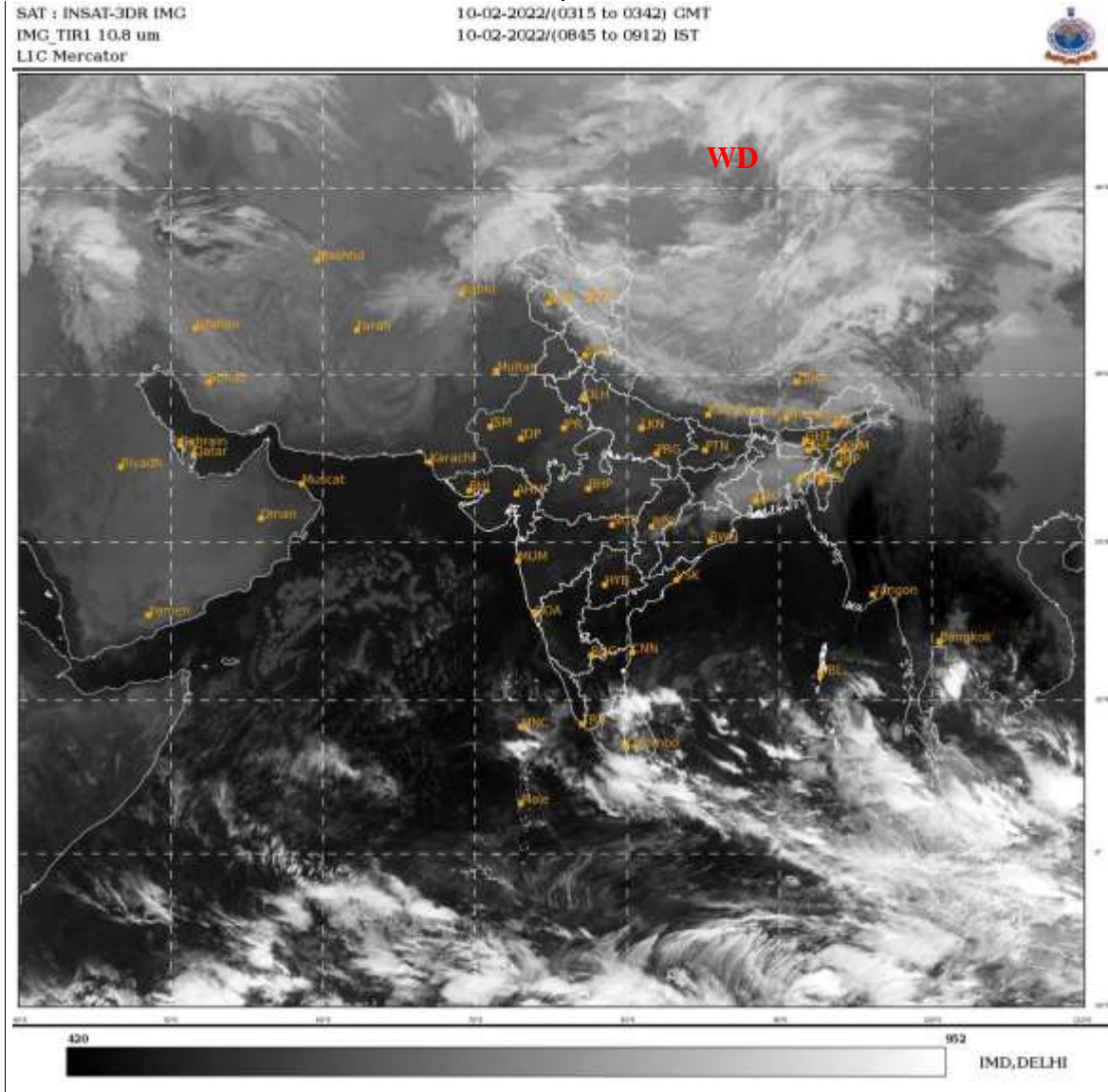




भारत मौसम विज्ञान विभाग  
पृथ्वी विज्ञान मंत्रालय  
India Meteorological Department  
Ministry of Earth Sciences



**SATELLITE BULLETIN BASED ON SATELLITE  
IMAGERIES AND PRODUCTS**  
**10.02.2022 TIME 0300 UTC**



TCIN50 DEMS 100300

SATELLITE BULLETIN BASED ON INSAT-3DR PIC OF 100300 UTC (.)

REGION COVERED BETWEEN LAT 50.0°N TO 30.0°S AND LONG 40.0°E TO 125.0°E (.)

**SALIENT FEATURES:-**

**WESTERN DISTURBANCE (WD):-**

SCT MULTILAYERED CLOUDS OVER LADAKH J&K N HP N UTRKND TIBET ADJ CHINA IN ASSW  
**WD** OVER THE AREA (.)

**CONVECTION OVER SOUTH BAY OF BENGAL:-**

SCT LOW/MED CLOUDS WITH EMBDD INT TO V INT CONVECTION OVER SW BAY OFF TN COT  
PERSISTS FROM LAST 24 HRS (.) MINIMUM CTT MINUS **81** DEG C (.)



INSAT-3DR 10-FEB-2022 03:15 WV IMG

WATER VAPOUR WIND

(1Kt = 0.5 m/s)

10 Kt

15 Kt

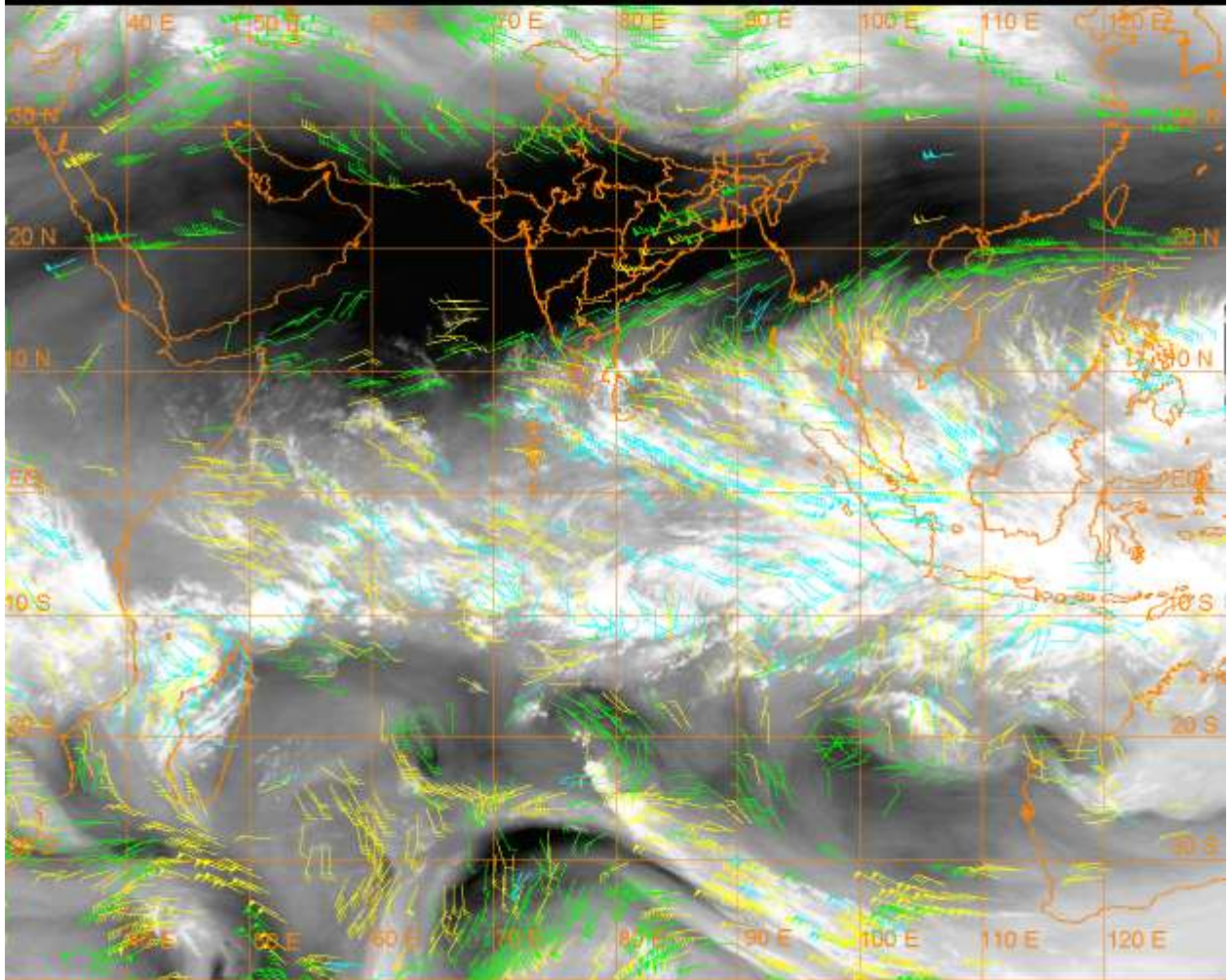
20 Kt

50 Kt

100-250 hPa

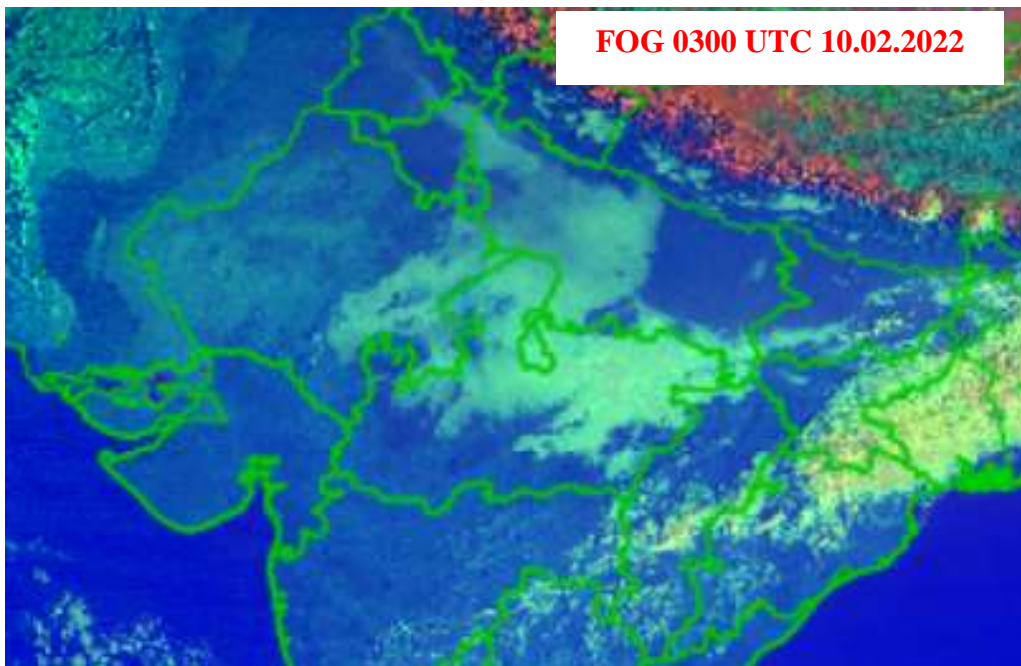
251-350 hPa

351-500 hPa



**FOG/LOW CLOUDS:-**

MICROPHYSICS PRODUCT OF INSAT-3D AT 0300UTC INDICATES SCT FOG/LOW CLOUDS OVER SE PJB NE & EXT SE HARY E RAJ N MP W & S UP SW BHR (.)



**CLOUDS DESCRIPTION WITHIN INDIA:-**

**NORTH:-**

SCT TO BKN LOW/MED CLOUDS WITH EMBDD WK TO MOD CONVTN OVER LADAKH J&K (.)

**EAST:-**

SCT LOW/MED CLOUDS WITH EMBDD ISOL WK TO MOD CONVTN OVER SKM ARUPR W MEGHA TRP BD JHRKND S GWB N ORS (.) SCT LOW/MED CLOUDS OVER C CHTGH SE BHR ASSAM MANI TRP (.)

**WEST:-**

**ISOL LOW/MED CLOUDS OVER VID (.)**

**SOUTH:-**

**SCT LOW/MED CLOUDS WITH EMBDD MOD TO INT CONVTN OVER S COTL TN AND NICOBAR ILS AND ISOL WK TO MOD CONVTN OVER LKSDP & ANDAMAN ILS (.) SCT LOW/MED CLOUDS OVER REST TN (.)**

**ARABIAN SEA:-**

**SCT LOW/MED CLOUDS WITH EMBDD ISOL WK TO MOD CONVTN OVER LKSDP ILS AREA OFF COAST KER (.) SCT LOW/MED CLOUDS OVER REST ARSEA (.)**

**BAY OF BENGAL & ANDAMAN SEA:-**

**SCT LOW/MED CLOUDS WITH EMBDD INT TO V INT CONVTN OVER S ANDAMAN SEA S BAY SRILANKA (.) SCT LOW/MED CLOUDS WITH EMBDD MOD TO INT CONVTN OVER SW BAY AND ISOL WK TO MOD CONVTN OVER WC BAY (.)**

**CLOUDS DESCRIPTION OUTSIDE INDIA:-**

**VORTEX OVER SOUTH INDIAN OCEAN:-**

**VORTEX OVER SOUTH INDIAN OCEAN CENTERED NEAR **16.7S / 105.3E** (.) INTENSITY **T1.0/1.5** (.) ASSTD SCT TO BKN LOW/MED CLOUDS WITH EMBDD MOD TO INT CONVTN OVER AREA BET LAT 15.5S TO 20.5S AND LONG 101.0E TO 106.0E (.)**

**SCT LOW/MED CLOUDS WITH EMBDD MOD TO INT CONVTN OVER TIBET ADJ CHINA GULF OF THAILAND SUMATRA ADJ W COAST STR OF MALACCA MALASIYA BORNEO SOUTH CHINA SEA JAVA ILS & SEA CELEBES ILS & SEA S PHILIPPINES N MOZAMBIQUE CHANNEL AND OVER INDIAN OCEAN BET LAT EQ TO 15.0S EAST OF LONG 48.0E AND BET LAT EQ TO LAT 5.0N EAST OF LONG 88.0E (.)**

**TOO 10/0955 HRS IST=**

**NNNN**

**LEGEND:-**

<b>REGION</b>	<b>NORTH</b>	<b>J&amp;K HP PJB HARY DLH UP UTRKND</b>
	<b>EAST</b>	<b>BHR JHRKND CHTGH ORS WB SKM NORTH- EAST STATES</b>
	<b>WEST</b>	<b>RAJ MP GUJ MAHA GOA</b>
	<b>SOUTH</b>	<b>TLNGN AP KRNTK KER TN LKSDP ANDAMAN &amp; NICOBAR ILS</b>

<b>CLOUD DISTRIBUTION</b>	<b>ISOL</b>	<b>ISOLATED (LESS THAN 25%)</b>
	<b>SCT</b>	<b>SCATTERED (25 TO 50%)</b>
	<b>BKN</b>	<b>BROKEN (51 TO 75%)</b>
	<b>SLD</b>	<b>SOLID (GREATER THAN 75%)</b>
<b>CLOUDS TOP TEMPERATURE</b>	<b>CTT</b>	<b>CLOUD TOP TEMPERATURE</b>
<b>CONVECTION</b>	<b>WK CONVTN</b>	<b>WEAK CONVECTION (CTT GREATER THAN -25°C)</b>
	<b>MOD CONVTN</b>	<b>MODERATE CONVECTION (CTT BETWEEN -25°C TO -40°C)</b>

	<b>INT CONVTN</b>	<b>INTENSE CONVECTION (CTT BETWEEN -41°C TO -70°C)</b>	
	<b>V INT CONVTN</b>	<b>VERY INTENSE CONVECTION (CTT LESS THAN -70°C)</b>	
<b>METEOROLOGICAL SUB-DIVISIONS, STATES &amp; UNION TERRITORIES</b>	<b>ARUPR</b>	<b>ARUNACHAL PRADESH</b>	
	<b>BHR</b>	<b>BIHAR</b>	
	<b>CHTGH</b>	<b>CHHATTISGARH</b>	
	<b>COTL AP</b>	<b>COASTAL ANDHRA PRADESH</b>	
	<b>COTL KRNTK</b>	<b>COASTAL KARNATAKA</b>	
	<b>COTL ORS</b>	<b>COASTAL ORISSA</b>	
	<b>GUJ</b>	<b>GUJARAT</b>	
	<b>GWB</b>	<b>GANGETIC WEST BENGAL</b>	
	<b>HARY</b>	<b>HARYANA</b>	
	<b>DLH</b>	<b>DELHI</b>	
	<b>HP</b>	<b>HIMACHAL PRADESH</b>	
	<b>J&amp;K</b>	<b>JAMMU AND KASHMIR</b>	
	<b>JHRKND</b>	<b>JHARKHAND</b>	
	<b>KER</b>	<b>KERALA</b>	
	<b>KKN</b>	<b>KONKAN</b>	
	<b>LKSDP</b>	<b>LAKSHADWEEP</b>	
	<b>M MAHA</b>	<b>MADHYA MAHARASHTRA</b>	
	<b>MAHA</b>	<b>MAHARASHTRA</b>	
	<b>MANI</b>	<b>MANIPUR</b>	
	<b>MEGHA</b>	<b>MEGHALAYA</b>	
	<b>MIZO</b>	<b>MIZORAM</b>	
	<b>MP</b>	<b>MADHYA PRADESH</b>	
		<b>MRTHWD</b>	<b>MARATHWADA</b>
		<b>NAGA</b>	<b>NAGALAND</b>
	<b>N COTL AP</b>	<b>NORTH COASTAL ANDHRA PRADESH</b>	
	<b>NIK</b>	<b>NORTH INTERIOR KARNATAKA</b>	
	<b>ORS</b>	<b>ORISSA</b>	
	<b>PJB</b>	<b>PUNJAB</b>	
	<b>RAJ</b>	<b>RAJASTHAN</b>	
	<b>RYLSM</b>	<b>RAYALASEEMA</b>	
	<b>SAU &amp; KUTCH</b>	<b>SAURASHTRA &amp; KUTCH</b>	
	<b>SHWB</b>	<b>SUB-HIMALAYAN WEST BENGAL</b>	
	<b>SIK</b>	<b>SOUTH INTERIOR KARNATAKA</b>	
	<b>SKM</b>	<b>SIKKIM</b>	
	<b>TLNGN</b>	<b>TELANGANA</b>	
	<b>TN</b>	<b>TAMIL NADU</b>	
	<b>TRP</b>	<b>TRIPURA</b>	
	<b>UP</b>	<b>UTTAR PRADESH</b>	
	<b>UTRKND</b>	<b>UTTARAKHAND</b>	
	<b>VID</b>	<b>VIDHARBHA</b>	
	<b>SHWB</b>	<b>SUB HIMALAYAN WEST BENGAL</b>	
	<b>GWB</b>	<b>GANGETIC WEST BENGAL</b>	
	<b>ARSEA</b>	<b>ARABIAN SEA</b>	

	<b>ILS</b>	<b>ISLANDS</b>
<b>MISCELLANEOUS</b>	<b>ASSW</b>	<b>IN ASSOCIATION WITH</b>
	<b>ASSTD</b>	<b>ASSOCIATED</b>
	<b>LLC</b>	<b>LOW LEVEL CIRCULATION</b>
	<b>EMBDD</b>	<b>EMBEDDED</b>
	<b>N/HOOD</b>	<b>NEIGHBOURHOOD</b>
	<b>EXT</b>	<b>EXTREME</b>