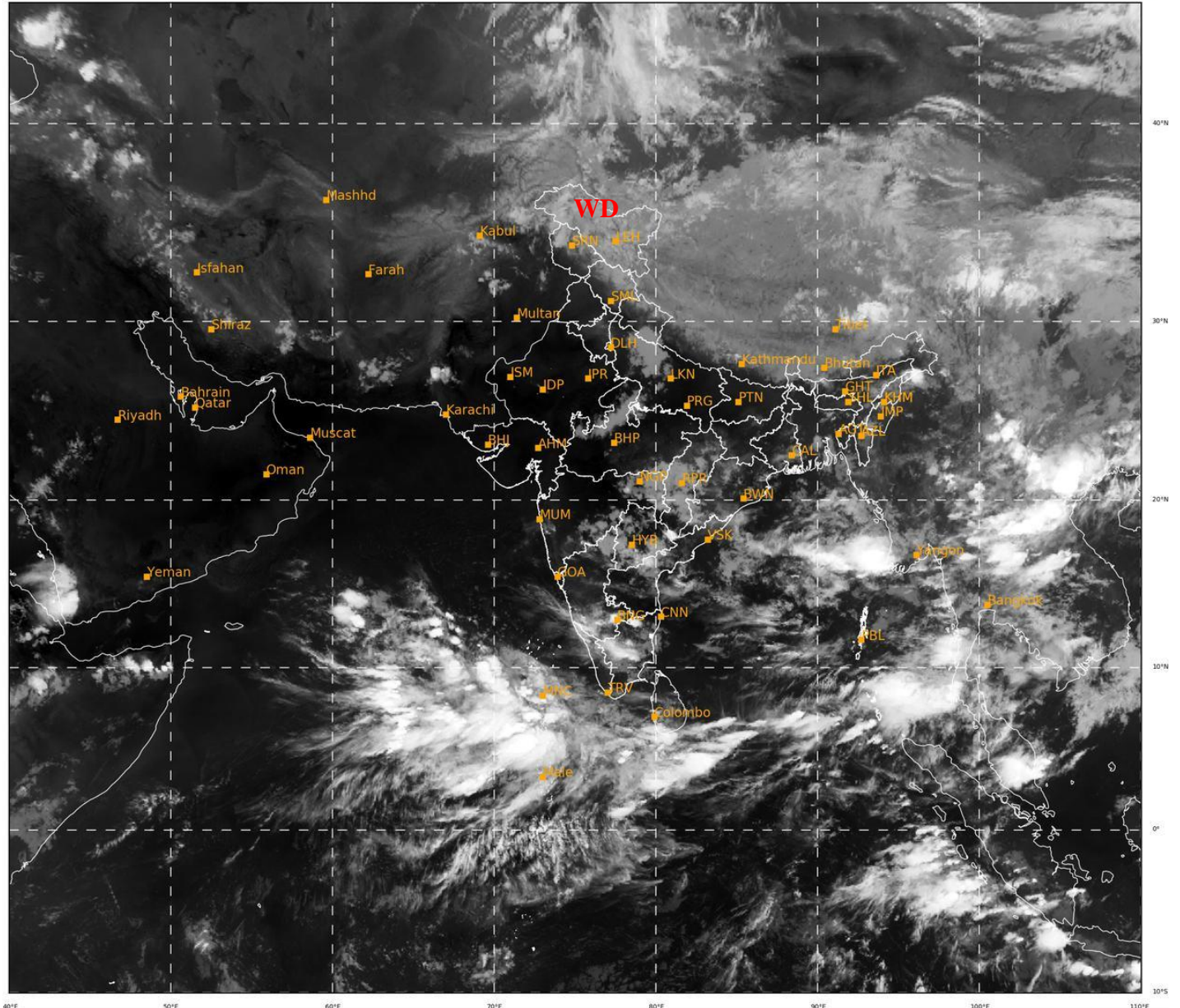




**SATELLITE BULLETIN BASED ON SATELLITE
IMAGERIES AND PRODUCTS**
30.05.2022 TIME 1800 UTC

SAT : INSAT-3D IMG
IMG_TIR1 10.8 um
LIC Mercator

30-05-2022/(1700 to 1726) GMT
30-05-2022/(2230 to 2256) IST



468

939

IMD, DELHI

TCIN50 DEMS 301800

SATELLITE BULLETIN BASED ON INSAT-3D PIC OF 301700 UTC (.)

REGION COVERED BETWEEN LAT 50.0°N TO 30.0°S AND LONG 40.0°E TO 125.0°E (.)

SALIENT FEATURES:-

WESTERN DISTURBANCE (WD):-

SCT MULTILAYERED CLOUDS OVER N PAK J&K LADAKH HP NW UP & N/HOOD IN ASSW **WD** OVER THE AREA (.)

THUNDERSTORM / CONVECTIVE ACTIVITY:-

THUNDERSTORM / CONVECTIVE ACTIVITIES OBSERVED OVER J&K LADAKH N HP NW UP S CHTGH S ORS SE GWB E ARUPR S MRTHWD VID S TLNGN ADJ AP N NIK S SIK N TN N KER NICOBAR ILS (.)

PRECIPITATION NOWCASTING:-

(BASED ON SCOPE NOWCASTING TOOL AT 1600 UTC AT A LEAD TIME OF 03 HRS (MM/HR):-

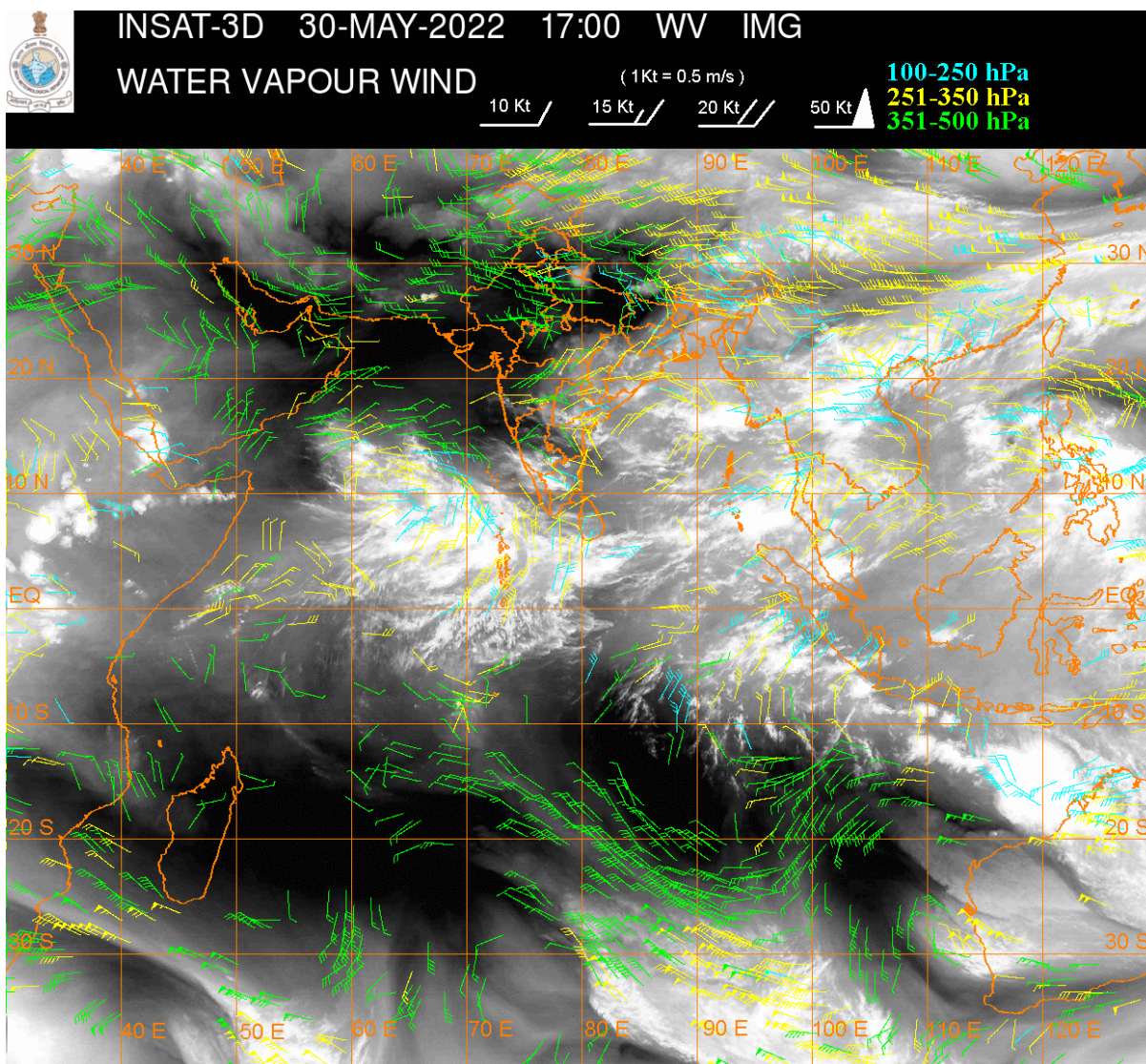
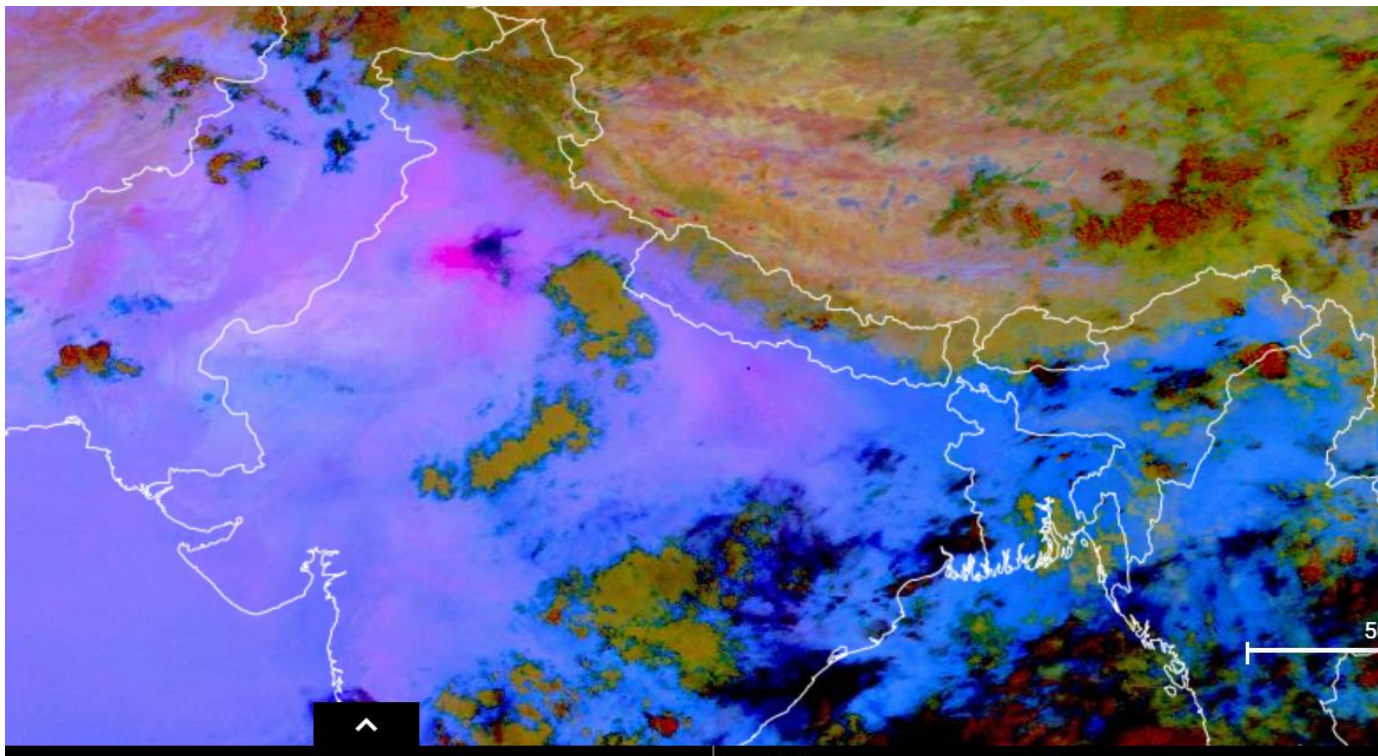
RAINFALL UP TO **10-15 MM** LIKELY OVER S COTL KRNTK SW SIK (.)

RAINFALL UP TO **5-10 MM** LIKELY OVER S TLNGN NW SIK WC TN (.)

RAINFALL UP TO **0.5-5 MM** LIKELY OVER S GWB E ASSAM C KKN N AP NICOBAR ILS (.)

DUST:-

DUST PRODUCT OF METEOSAT-8 AT 1645 UTC INDICATES DUST OVER NW RAJ W PJB W UP (.)



CLOUDS DESCRIPTION WITHIN INDIA:-

NORTH:-

SCT LOW/MED CLOUDS WITH EMBDD WK TO MOD CONVTN OVER LEDAKH J&K N HP UTRKND W UP (.) SCT LOW/MED CLOUDS OVER S HP N HARY (.)

EAST:-

SCT LOW/MED CLOUDS WITH EMBDD INT TO V INT CONVTN OVER SE ARUPR (MINIMUM CTT MINUS 72 DEG C) (.) SCT LOW/MED CLOUDS WITH EMBDD MOD TO INT CONVTN OVER EXT S CHTGH EXT C ARUPR (.) SCT LOW/MED CLOUDS WITH EMBDD WK CONVTN OVER W

JHRKND REST CHTGH ORS REST GWB SKM E ASSAM ARUPR MANI (.) SCT LOW/MED CLOUDS OVER S JHRKND ORS GWB N SHWB SKM REST NE STATES EXCEPTED MEGHA TRP (.)

WEST:-

SCT LOW/MED CLOUDS WITH EMBDD ISOL MOD TO INT CONVTN OVER E VID EXT S MRTHWD WC KKN AND WK CONVTN OVER EXT SE RAJ NW & SE MP REST MRTHWD REST VID (.) SCT LOW/MED CLOUDS OVER S RAJ C MP SOUTH MADHYA MAHA GOA (.)

SOUTH:-

SCT TO BKN LOW/MED CLOUDS WITH EMBDD INT TO V INT CONVTN OVER SE SIK N TN (MINIMUM CTT MINUS 72 DEG C) AND MOD TO INT CONVTN OVER E TLNGN S COTL KRNTK SW SIK N KER & NICOBAR ILS (.) SCT LOW/MED CLOUDS WITH EMBDD WK TO MOD CONVTN OVER REST TLNGN N NIK S KER REST TN (.) SCT LOW/MED CLOUDS OVER RYLSM REST KRNTK REST AP LKSDP ILS & ANDAMAN ILS (.)

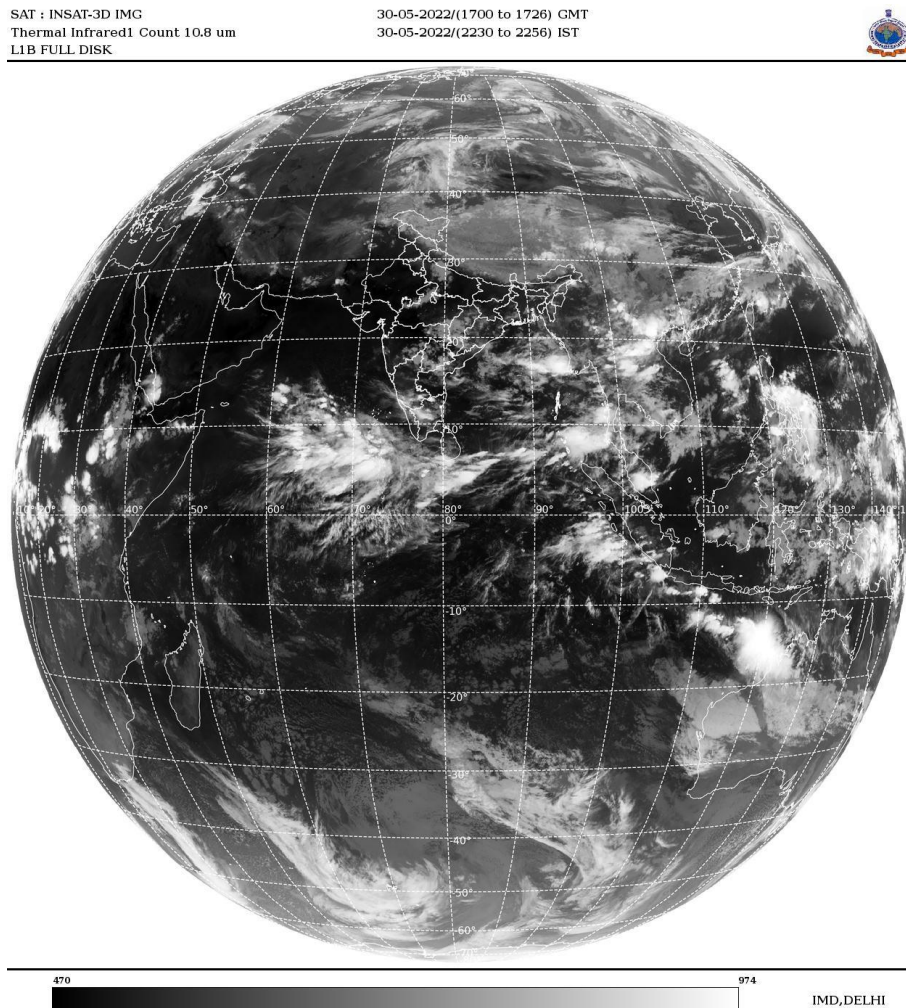
ARABIAN SEA:-

SCT TO BKN LOW/MED CLOUDS WITH EMBDD INT TO V INT CONVTN OVER S ARSEA ADJ SOUTH PARTS OF CENTRAL ARSEA MALDIVES & N/HOOD AREAS (.) SCT LOW/MED CLOUDS WITH EMBDD MOD TO INT CONVTN OVER COMORIN AREA (.)

BAY OF BENGAL & ANDAMAN SEA:-

SCT LOW/MED CLOUDS WITH EMBDD INT TO V INT CONVTN OVER NE BAY ANDAMAN SEA ADJ S BAY(.) SCT LOW/MED CLOUDS WITH EMBDD MOD TO INT CONVTN OVER REST BAY (.)

CLOUDS DESCRIPTION OUTSIDE INDIA:-



SCT LOW/MED CLOUDS WITH EMBDD MOD TO INT CONVTN OVER SRI LANKA MALDIVES C NEPAL TIBET CHINA THAILAND GULF OF THAILAND CAMBODIA LAOS VIETNAM SUMATRA ADJ W COAST STR OF MALACCA MALAY PENINSULA BORNEO SOUTH CHINA SEA YELLOW SEA CELEBES ILS & SEA PHILIPPINES E CHINA SEA AND OVER INDIAN OCEAN BET 5.0 N TO LAT 11.0S LONG 59.0E TO 113.0E (.)

TOO 30/2340 HRS IST=

NNNN

LEGEND:-

REGION	NORTH	J&K HP PJB HARY DLH UP UTRKND
	EAST	BHR JHRKND CHTGH OR WB SKM NORTH- EAST STATES
	WEST	RAJ MP GUJ MAHA GOA
	SOUTH	TLNGN AP KRNTK KER TN LKSDP ANDAMAN & NICOBAR ILS

CLOUD DISTRIBUTION	ISOL	ISOLATED (LESS THAN 25%)
	SCT	SCATTERED (25 TO 50%)
	BKN	BROKEN (51 TO 75%)
	SLD	SOLID (GREATER THAN 75%)
CLOUDS TOP TEMPERATURE	CTT	CLOUD TOP TEMPERATURE
CONVECTION	WK CONVTN	WEAK CONVECTION (CTT GREATER THAN -25°C)
	MOD CONVTN	MODERATE CONVECTION (CTT BETWEEN -25°C TO -40°C)
	INT CONVTN	INTENSE CONVECTION (CTT BETWEEN -41°C TO -70°C)
	V INT CONVTN	VERY INTENSE CONVECTION (CTT LESS THAN -70°C)
METEOROLOGICAL SUB-DIVISIONS, STATES & UNION TERRITORIES	ARUPR	ARUNACHAL PRADESH
	BHR	BIHAR
	CHTGH	CHHATTISGARH
	COTL AP	COASTAL ANDHRA PRADESH
	COTL KRNTK	COASTAL KARNATAKA
	COTL ORS	COASTAL ORISSA
	GUJ	GUJARAT
	GWB	GANGETIC WEST BENGAL
	HARY	HARYANA
	DLH	DELHI
	HP	HIMACHAL PRADESH
	J&K	JAMMU AND KASHMIR
	JHRKND	JHARKHAND
	KER	KERALA
	KKN	KONKAN
	LKSDP	LAKSHADWEEP
	M MAHA	MADHYA MAHARASHTRA
	MAHA	MAHARASHTRA
	MANI	MANIPUR
	MEGHA	MEGHALAYA
	MIZO	MIZORAM
	MP	MADHYA PRADESH
	MRTHWD	MARATHWADA
	NAGA	NAGALAND

	N COTL AP	NORTH COASTAL ANDHRA PRADESH
	NIK	NORTH INTERIOR KARNATAKA
	ORS	ORISSA
	PJB	PUNJAB
	RAJ	RAJASTHAN
	RYLSM	RAYALASEEMA
	SAU & KUTCH	SAURASHTRA & KUTCH
	SHWB	SUB-HIMALAYAN WEST BENGAL
	SIK	SOUTH INTERIOR KARNATAKA
	SKM	SIKKIM
	TLNGN	TELANGANA
	TN	TAMIL NADU
	TRP	TRIPURA
	UP	UTTAR PRADESH
	UTRKN	UTTARAKHAND
	VID	VIDHARBHA
	SHWB	SUB HIMALAYAN WEST BENGAL
	GWB	GANGETIC WEST BENGAL
	ARSEA	ARABIAN SEA
	ILS	ISLANDS
MISCELLANEOUS	ASSW	IN ASSOCIATION WITH
	ASSTD	ASSOCIATED
	LLC	LOW LEVEL CIRCULATION
	EMBDD	EMBEDDED
	N/HOOD	NEIGHBOURHOOD
	EXT	EXTREME