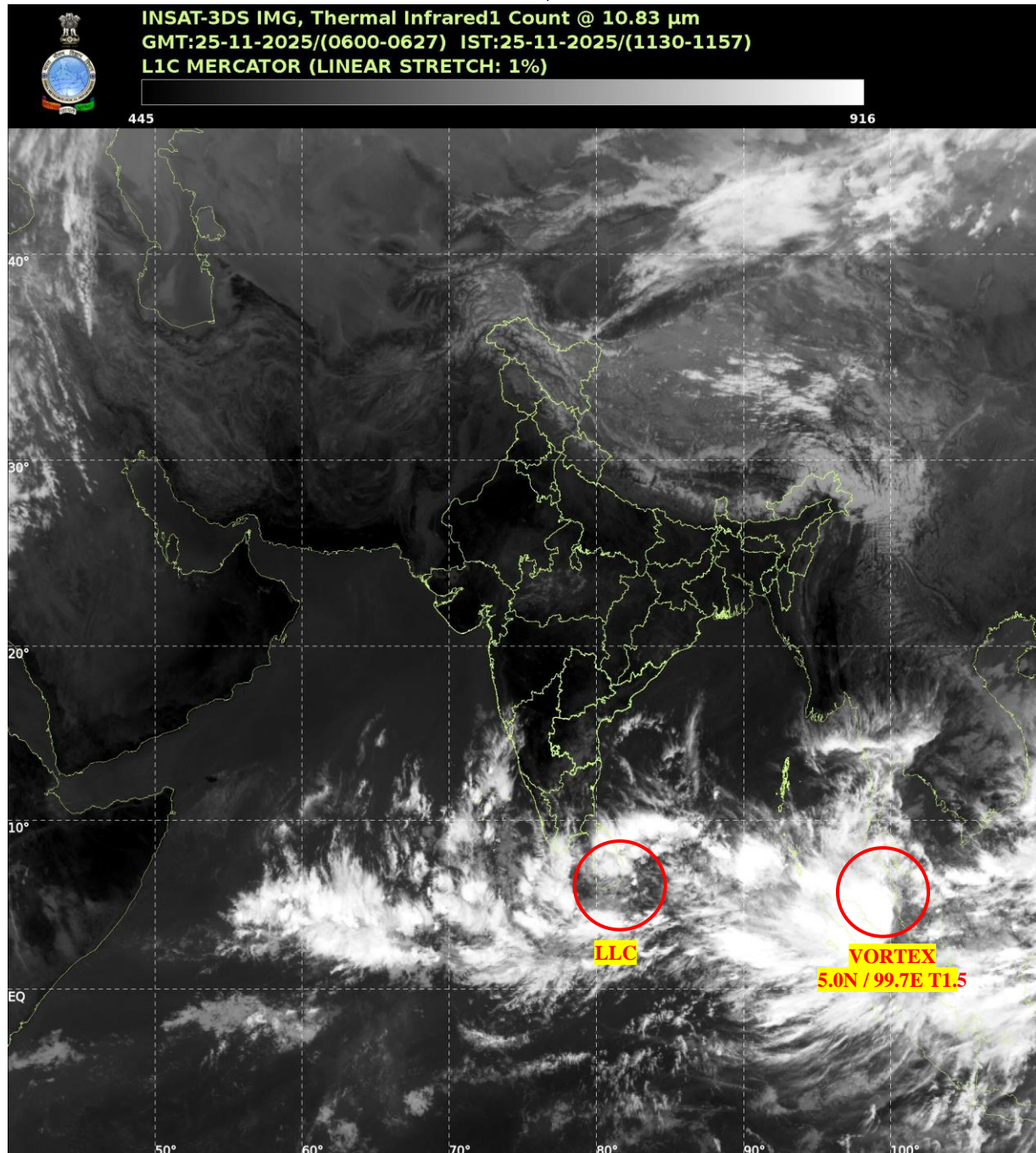




**SATELLITE BULLETIN BASED ON SATELLITE  
IMAGERIES AND PRODUCTS**  
**25.11.2025 TIME 0600 UTC**



TCIN50 DEMS 250600

SATELLITE BULLETIN BASED ON INSAT-3DS PIC OF 250600 UTC (.)

REGION COVERED BETWEEN LAT 50.0°N TO 35.0°S AND LONG 40.0°E TO 125.0°E (.)

**SALIENT FEATURES:-**

**VORTEX OVER STRAIT OF MALACCA & N/HOOD:-**

VORTEX OVER STRAIT OF MALACCA & N/HOOD CENTERED NEAR **5.0N / 99.7E** (.)  
INTENSITY **T1.5** (.) ASSTD SCT TO BKN LOW/MED CLOUDS WITH EMBDD INTENSE TO  
VERY INTENSE CONVECTION OVER SOUTH ANDAMAN SEA NORTH SUMATRA STRAIT OF  
MALACCA ADJ MALAYSIA & N/HOOD (MINIMUM **CTT MINUS 70-90 DEG CEL**) (.)

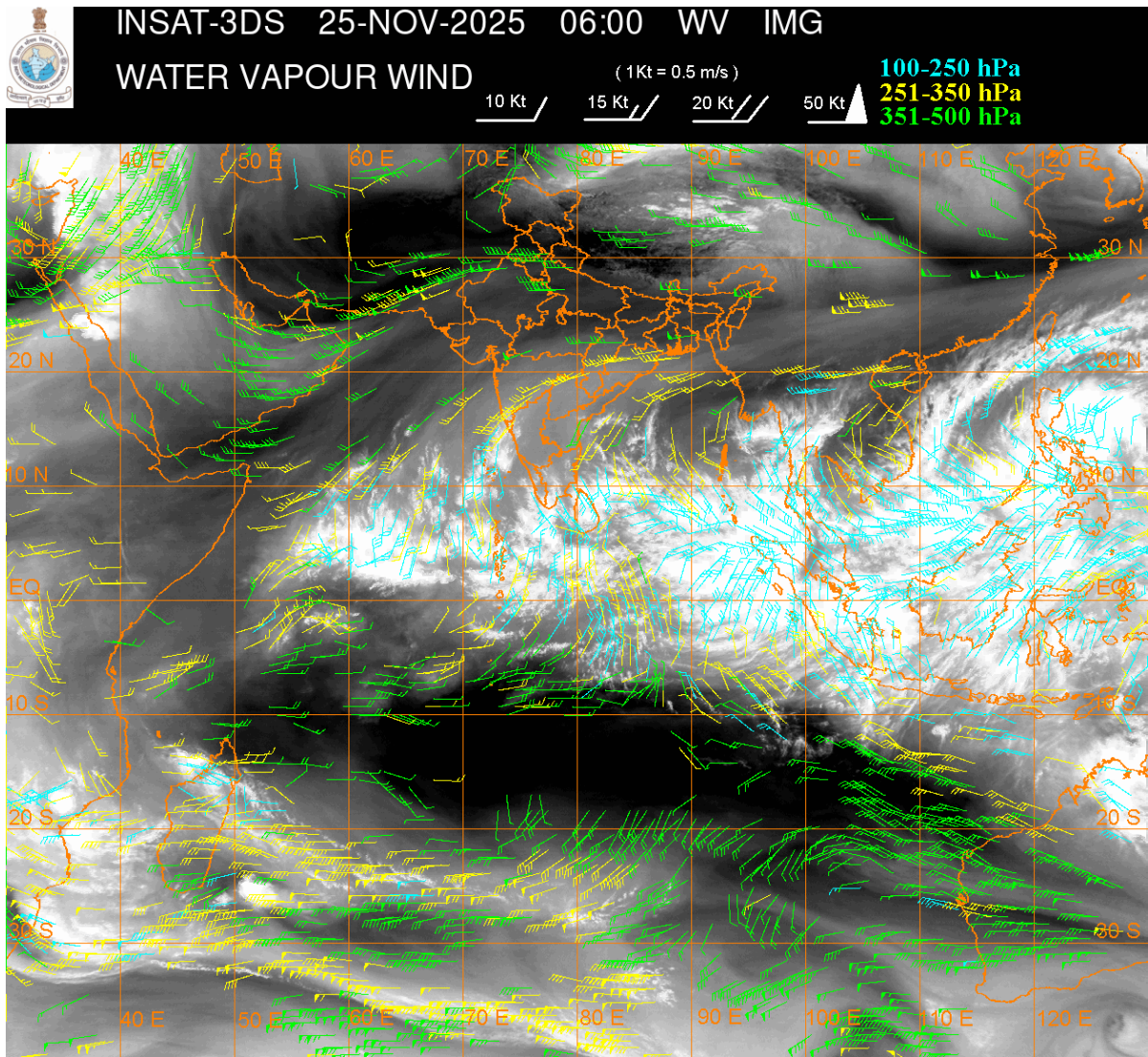
**LLC OVER SOUTH-WEST BAY ADJ SOUTH SRI LANKA & EQUATORIAL INDIAN OCEAN:-**

LOW LEVEL CIRCULATION (**LLC**) OVER SOUTH-WEST BAY ADJ SOUTH SRI LANKA &  
EQUATORIAL INDIAN OCEAN (.) ASSTD SCT TO BKN LOW/MED CLOUDS WITH EMBDD  
INTENSE TO VERY INTENSE CONVECTION OVER SOUTH-WEST BAY COMORIN AREA  
GULF OF MANNAR SRI LANKA AND EQUATORIAL INDIAN OCEAN (MINIMUM **CTT MINUS  
70-90 DEG CEL**) (.)

**CONVECTIVE / THUNDERSTORM ACTIVITY:-**

**INTENSE TO VERY INTENSE CONVECTIVE CLOUDS / THUNDERSTORM ACTIVITY OBSERVED OVER LKSDP ILS AREA & NICOBAR ILS AREA (MINIMUM CTT MINUS 70-90 DEG CEL) (.)**

**MODERATE TO INTENSE CONVECTIVE CLOUDS / THUNDERSTORM ACTIVITY OBSERVED OVER S KER S TN (MINIMUM CTT MINUS 40-70 DEG CEL) (.)**



**CLOUDS DESCRIPTION WITHIN INDIA:-**

**NORTH:-**

**SCT LOW/MED CLOUDS WITH EMBDD ISOL WK TO MOD CONVTN OVER LADAKH (.) ISOL TO SCT LOW/MED CLOUDS OVER J&K HP UTRKND (.)**

**EAST:-**

**SCT LOW/MED CLOUDS WITH EMBDD WK CONVTN OVER SKM ARUPR (.) ISOL TO SCT LOW/MED CLOUDS OVER ORS REST NE STATES (.)**

**WEST:-**

**SCT LOW/MED CLOUDS OVER MP S KKN GOA (.)**

**SOUTH:-**

**SCT TO BKN LOW/MED CLOUDS WITH EMBDD INT TO V INT CONVTN OVER NICOBAR ILS AREA (.) SCT LOW/MED CLOUDS WITH EMBDD MOD TO INT CONVTN OVER S KER S TN LKSDP ILS AREA AND ISOL WK TO MOD CONVTN OVER COTL KRNTK N TN ANDAMAN ILS AREA (.) ISOL TO SCT LOW/MED CLOUDS OVER REST KRNTK TLNGN RYLSM COTL AP N KER (.)**

**ARABIAN SEA:-**

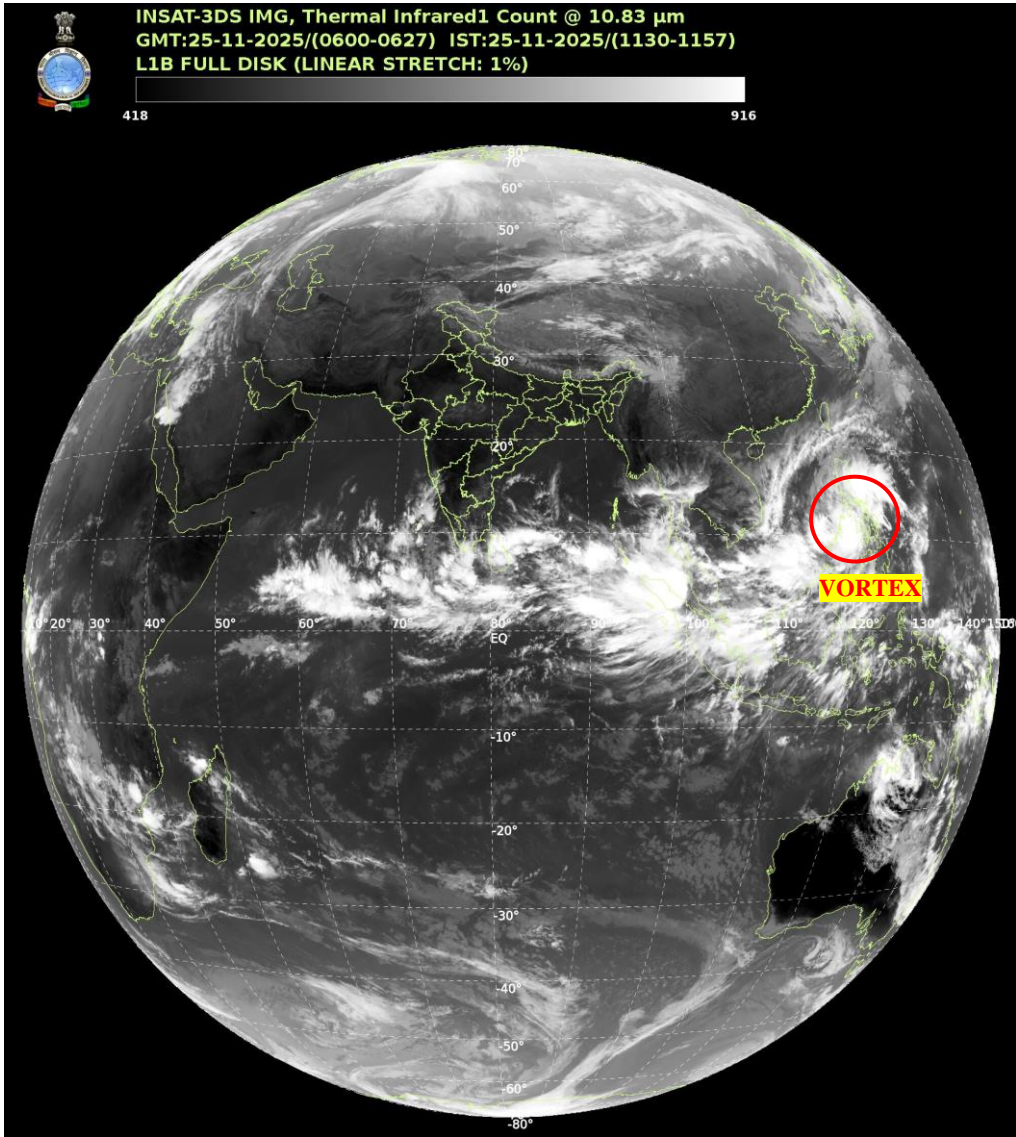
**SCT TO BKN LOW/MED CLOUDS WITH EMBDD INT TO V INT CONVTN OVER EC ARSEA OFF KRNTK COAST SOUTH ARSEA LKSDP ILS AREA MALDIVES & COMORIN AREA (.)**



**BAY OF BENGAL & ANDAMAN SEA:-**

SCT TO BKN LOW/MED CLOUDS WITH EMBDD INT TO V INT CONVTN OVER SOUTH BAY AND SOUTH ANDAMAN SEA (.) SCT LOW/MED CLOUDS WITH EMBDD MOD TO INT CONVTN OVER WC BAY AND NORTH ANDAMAN SEA (.)

**CLOUDS DESCRIPTION OUTSIDE INDIA:-**



**VORTEX OVER PHILIPPINES SEA & N/HOOD:-**

VORTEX OVER PHILIPPINES SEA & N/HOOD CENTERED NEAR **10.7N / 121.5E** (.) INTENSITY **T2.0/2.0** (.) MAXIMUM SUSTAINED WINDS **28-33 KTS** (.) ASSTD SCT TO BKN LOW/MED CLOUDS WITH EMBDD INT TO V INT CONVTN OVER AREA BET LAT 8.0N TO 18.0N LONG 118.0E TO 130.0E & PHILIPPINES (.)

SCT LOW/MED CLOUDS WITH EMBDD MOD TO INT CONVTN OVER SRI LANKA PALK STR GULF OF MANNAR MALDIVES TIBET CHINA YELLOW SEA EAST CHINA SEA SOUTH MYANMAR THAILAND GULF OF THAILAND CAMBODIA VIETNAM SUMATRA STR OF MALACCA MALAYSIA BORNEO SOUTH CHINA SEA JAVA ILS & SEA CELEBES ILS & SEA PHILIPPINES SULU SEA MADAGASCAR MOZAMBIQUE CHANNEL AND OVER INDIAN OCEAN BET LAT 5.0N TO LAT 10.0S LONG 50.0E TO 110.0E (.)

TOO 25/1250 HRS IST=

NNNN

**LEGEND:-**

REGION	NORTH	J&K HP UTRKND PJB HARY DLH UP
	EAST	BHR JHRKND CHTGH ORS WB SKM NORTH-EAST STATES
	WEST	RAJ MP GUJ MAHA GOA
	SOUTH	TLNGN AP KRNTK KER TN LKSDP ANDAMAN & NICOBAR ILS
CLOUD DISTRIBUTION	ISOL	ISOLATED (LESS THAN 25%)
	SCT	SCATTERED (25 TO 50%)
	BKN	BROKEN (51 TO 75%)
	SLD	SOLID (GREATER THAN 75%)
CLOUDS TOP TEMPERATURE	CTT	CLOUD TOP TEMPERATURE
CONVECTION	WK CONVTN	WEAK CONVECTION (CTT GREATER THAN -25°C)
	MOD CONVTN	MODERATE CONVECTION (CTT BETWEEN -25°C TO -40°C)
	INT CONVTN	INTENSE CONVECTION (CTT BETWEEN -41°C TO -70°C)
	V INT CONVTN	VERY INTENSE CONVECTION (CTT LESS THAN -70°C)
METEOROLOGICAL SUB- DIVISIONS, STATES & UNION TERRITORIES	J&K	JAMMU AND KASHMIR
	HP	HIMACHAL PRADESH
	UTRKND	UTTARAKHAND
	PJB	PUNJAB
	HARY	HARYANA
	DLH	DELHI
	BHR	BIHAR
	JHRKND	JHARKHAND
	CHTGH	CHHATTISGARH
	ORS	ODISHA
	GWB	GANGETIC WEST BENGAL
	SHWB	SUB-HIMALAYAN WEST BENGAL
	SKM	SIKKIM
	ARUPR	ARUNACHAL PRADESH
	ASSAM	ASSAM
	MEGHA	MEGHALAYA
	NAGA	NAGALAND
	MANI	MANIPUR
	MIZO	MIZORAM
	TRP	TRIPURA
	RAJ	RAJASTHAN
	MP	MADHYA PRADESH
	GUJ	GUJARAT
	SAU & KUTCH	SAURASHTRA & KUTCH

	<b>MAHA</b>	<b>MAHARASHTRA</b>
	<b>M MAHA</b>	<b>MADHYA MAHARASHTRA</b>
	<b>MRTHWD</b>	<b>MARATHWADA</b>
	<b>VID</b>	<b>VIDARBHA</b>
	<b>KKN</b>	<b>KONKAN</b>
	<b>TLNGN</b>	<b>TELANGANA</b>
	<b>RYLSM</b>	<b>RAYALASEEMA</b>
	<b>COTL AP</b>	<b>COASTAL ANDHRA PRADESH</b>
	<b>NIK</b>	<b>NORTH INTERIOR KARNATAKA</b>
	<b>SIK</b>	<b>SOUTH INTERIOR KARNATAKA</b>
	<b>COTL KRNTK</b>	<b>COASTAL KARNATAKA</b>
	<b>KER</b>	<b>KERALA</b>
	<b>TN</b>	<b>TAMILNADU</b>
	<b>LKSDP</b>	<b>LAKSHADWEEP</b>
	<b>ILS</b>	<b>ISLANDS</b>
	<b>ARSEA</b>	<b>ARABIAN SEA</b>
<b>MISCELLANEOUS</b>	<b>ASSW</b>	<b>IN ASSOCIATION WITH</b>
	<b>ASSTD</b>	<b>ASSOCIATED</b>
	<b>LLC</b>	<b>LOW LEVEL CIRCULATION</b>
	<b>EMBDD</b>	<b>EMBEDDED</b>
	<b>N/HOOD</b>	<b>NEIGHBOURHOOD</b>
	<b>EXT</b>	<b>EXTREME</b>