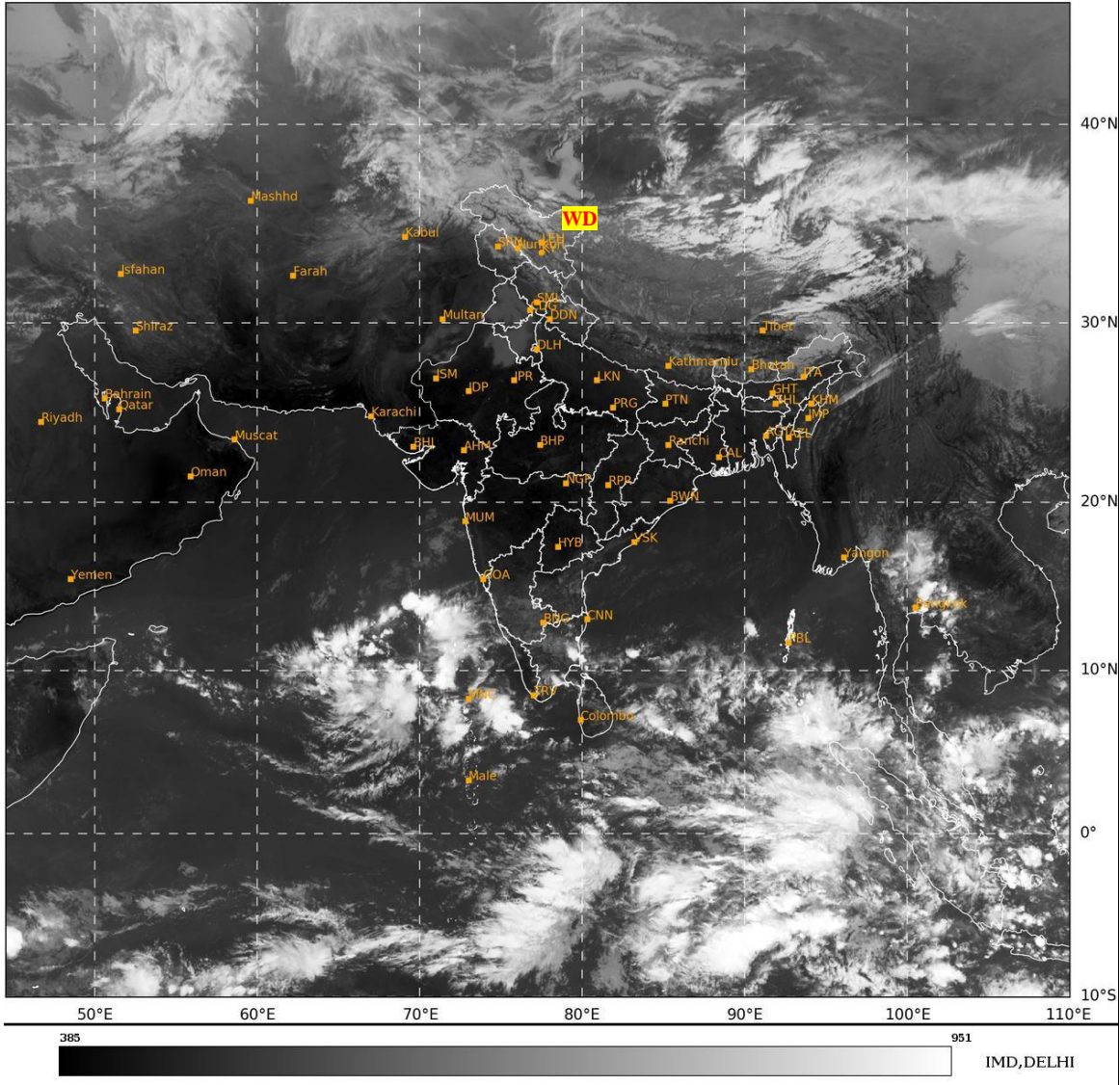




**SATELLITE BULLETIN BASED ON SATELLITE
IMAGERIES AND PRODUCTS
17.11.2024 TIME 0600 UTC**

SAT : INSAT-3DR IMG
IMG_TIR1 10.8 um
LIC Mercator

17-11-2024/(0545 to 0612) GMT
17-11-2024/(1115 to 1142) IST



TCIN50 DEMS 170600

SATELLITE BULLETIN BASED ON INSAT-3DR PIC OF 170545 UTC (.)

REGION COVERED BETWEEN LAT 50.0°N TO 35.0°S AND LONG 40.0°E TO 125.0°E (.)

SALIENT FEATURES:-

WESTERN DISTURBANCE:-

SCT MULTILAYERED CLOUDS OVER LADAKH TIBET ADJ CHINA IN ASSW **WD** OVER THE AREA (.)

CONVECTIVE / THUNDERSTORM ACTIVITY:-

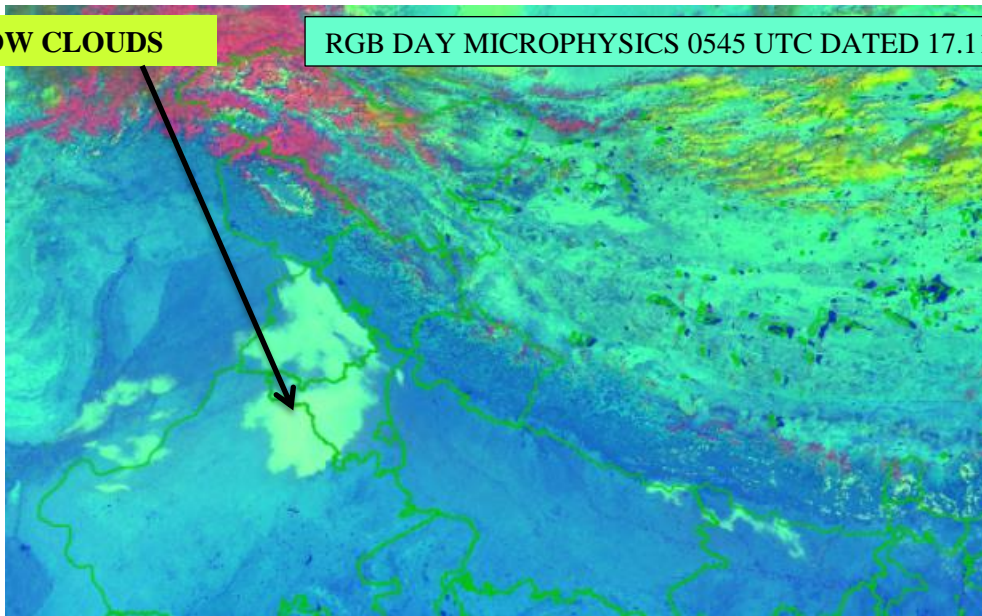
MODERATE TO INTENSE CONVECTIVE / THUNDERSTORM ACTIVITY OBSERVED OVER E TN LKSDP ILS (MINIMUM CTT **MINUS 50-70 DEG CEL**) (.)

FOG / LOW CLOUDS :-

RGB COMPOSITE DAY MICROPHYSICS IMAGERY OF INSAT-3DR AT 0545 UTC INDICATES SCT FOG / LOW CLOUDS OVER EC PAK PJB NW RAJ W HARY NE UP N BHR (.)

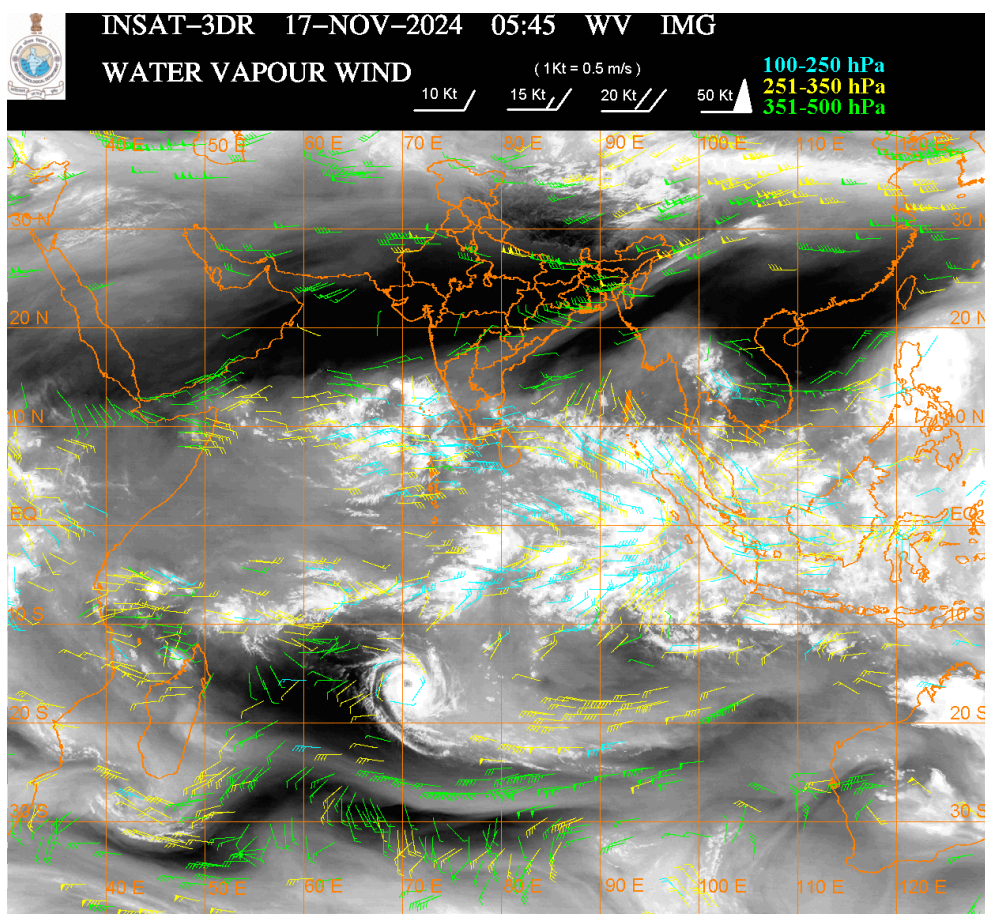
FOG/LOW CLOUDS

RGB DAY MICROPHYSICS 0545 UTC DATED 17.11.2024



JET STREAM:-

JET STREAM OF ORDER UPTO 120 KTS OBSERVED OVER NORTH AND CENTRAL INDIA NORTH OF LAT 20.0N (.)



CLOUDS DESCRIPTION WITHIN INDIA:-

NORTH:-

SCT LOW/MED CLOUDS WITH EMBDD WK TO MOD CONVTN OVER LADAKH (.) SCT LOW/MED CLOUDS OVER J&K HP UTRKND (.)

EAST:-

SCT LOW/MED CLOUDS WITH EMBDD ISOL WK CONVTN OVER SKM ARUPR (.) SCT LOW/MED CLOUDS OVER SHWB REST NE STATES (.)

WEST:-

ISOL TO SCT LOW/MED CLOUDS OVER KKN & GOA (.)

SOUTH:-

SCT LOW/MED CLOUDS WITH EMBDD MOD TO INT CONVTN OVER E TN LKSDP ILS & NICOBAR ILS (.) SCT LOW/MED CLOUDS WITH EMBDD WK TO MOD CONVTN OVER S KER (.) SCT LOW/MED CLOUDS OVER KRNTK TLNGN RYLSM COTL AP N KER W TN ANDAMAN ILS (.)

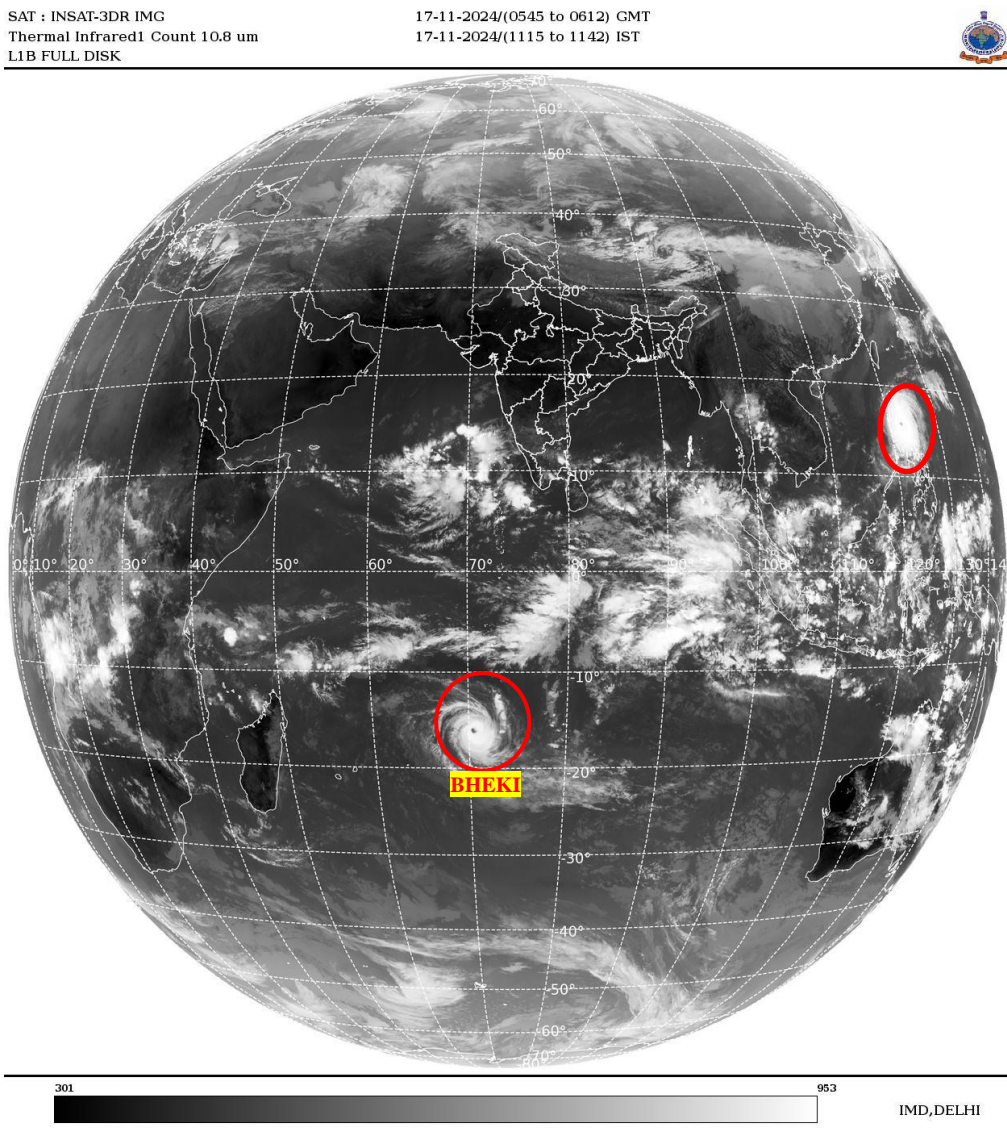
ARABIAN SEA:-

SCT LOW/MED CLOUDS WITH EMBDD INT TO V INTCONVTN OVER EC & SE ARSEA LKSDP ILS MALDIVES & COMORIN AREA (.) SCT LOW/MED CLOUDS WITH EMBDD MOD TO INT CONVTN OVER SW ARSEA (.)

BAY OF BENGAL & ANDAMAN SEA:-

SCT LOW/MED CLOUDS WITH EMBDD INT TO V INT CONVTN OVER S ANDAMAN SEA (.) SCT LOW/MED CLOUDS WITH EMBDD MOD TO INT CONVTN OVER SOUTH BAY (.)

CLOUDS DESCRIPTION OUTSIDE INDIA:-



VORTEX (BHEKI) OVER SOUTH INDIAN OCEAN:-

VORTEX (**BHEKI**) OVER SOUTH INDIAN OCEAN (**AREA E80**) CENTERED NEAR **15.3S / 71.4E** (.) INTENSITY **T5.5/5.5** (.) MAXIMUM SUSTAUNED WINDS **90-119 KTS** (.) ASSTD BKN LOW/MED CLOUDS WITH EMBDD INT TO V INT CONVTN OVER AREA BET LAT 12.0S TO 22.0S LONG 67.0E TO 74.0E (.)

VORTEX (MAN-YI) OVER PHILLIPINES SEA :-

VORTEX (**MAN-YI**) OVER PHILLIPINES SEA & N/HOOD CENTERED NEAR **15.7N / 122.0E** (.) INTENSITY **T6.5/6.5** (.) MAXIMUM SUSTAUNED WINDS **119-127 KTS** (.) ASSTD BKN LOW/MED CLOUDS WITH EMBDD INT TO V INT CONVTN OVER AREA BET LAT 11.0N TO 19.0N LONG 119.0E TO 127.0E (.)

SCT LOW/MED CLOUDS WITH EMBDD MOD TO INT CONVTN OVER PALK STR GULF OF MANNAR MALDIVES TIBET CHINA YELLOW SEA EAST CHINA SEA SUMATRA STR OF MALACCA MALAYSIA BORNEO SOUTH CHINA SEA JAVA ILS & SEA CELEBES ILS & SEA PHILIPPINES SULU SEA MOZAMBIQUE CHANNEL MADAGASCAR AND OVER INDIAN OCEAN BET LAT 5.0N TO 23.0S LONG 50.0E TO 110.0E (.)

TOO 17/1240 HRS IST=

NNNN

LEGEND:-

REGION	NORTH	J&K HP PJB HARY DLH UP UTRKND	
	EAST	BHR JHRKND CHTGH ORS WB SKM NORTH- EAST STATES	
	WEST	RAJ MP GUJ MAHA GOA	
	SOUTH	TLNGN AP KRNTK KER TN LKSDP ANDAMAN & NICOBAR ILS	
CLOUD DISTRIBUTION	ISOL	ISOLATED (LESS THAN 25%)	
	SCT	SCATTERED (25 TO 50%)	
	BKN	BROKEN (51 TO 75%)	
	SLD	SOLID (GREATER THAN 75%)	
CLOUDS TOP TEMPERATURE	CTT	CLOUD TOP TEMPERATURE	
CONVECTION	WK CONVTN	WEAK CONVECTION (CTT GREATER THAN -25°C)	
	MOD CONVTN	MODERATE CONVECTION (CTT BETWEEN -25°C TO -40°C)	
	INT CONVTN	INTENSE CONVECTION (CTT BETWEEN -41°C TO -70°C)	
	V INT CONVTN	VERY INTENSE CONVECTION (CTT LESS THAN -70°C)	
METEOROLOGICAL SUB- DIVISIONS, STATES & UNION TERRITORIES	ARUPR	ARUNACHAL PRADESH	
	BHR	BIHAR	
	CHTGH	CHHATTISGARH	
	COTL AP	COASTAL ANDHRA PRADESH	
	COTL KRNTK	COASTAL KARNATAKA	
	COTL ORS	COASTAL ORISSA	
	GUJ	GUJARAT	
	GWB	GANGETIC WEST BENGAL	
	HARY	HARYANA	
	DLH	DELHI	
	HP	HIMACHAL PRADESH	
	J&K	JAMMU AND KASHMIR	
	JHRKND	JHARKHAND	
	KER	KERALA	
	KKN	KONKAN	
	LKSDP	LAKSHADWEEP	
	M MAHA	MADHYA MAHARASHTRA	
	MAHA	MAHARASHTRA	
	MANI	MANIPUR	
	MEGHA	MEGHALAYA	
	MIZO	MIZORAM	
	MP	MADHYA PRADESH	
		MRTHWD	MARATHWADA
		NAGA	NAGALAND
N COTL AP		NORTH COASTAL ANDHRA PRADESH	

	NIK	NORTH INTERIOR KARNATAKA
	ORS	ORISSA
	PJB	PUNJAB
	RAJ	RAJASTHAN
	RYLSM	RAYALASEEMA
	SAU & KUTCH	SAURASHTRA & KUTCH
	SHWB	SUB-HIMALAYAN WEST BENGAL
	SIK	SOUTH INTERIOR KARNATAKA
	SKM	SIKKIM
	TLNGN	TELANGANA
	TN	TAMIL NADU
	TRP	TRIPURA
	UP	UTTAR PRADESH
	UTRKND	UTTARAKHAND
	VID	VIDHARBHA
	SHWB	SUB HIMALAYAN WEST BENGAL
	GWB	GANGETIC WEST BENGAL
	ARSEA	ARABIAN SEA
	ILS	ISLANDS
MISCELLANEOUS	ASSW	IN ASSOCIATION WITH
	ASSTD	ASSOCIATED
	LLC	LOW LEVEL CIRCULATION
	EMBDD	EMBEDDED
	N/HOOD	NEIGHBOURHOOD
	EXT	EXTREME