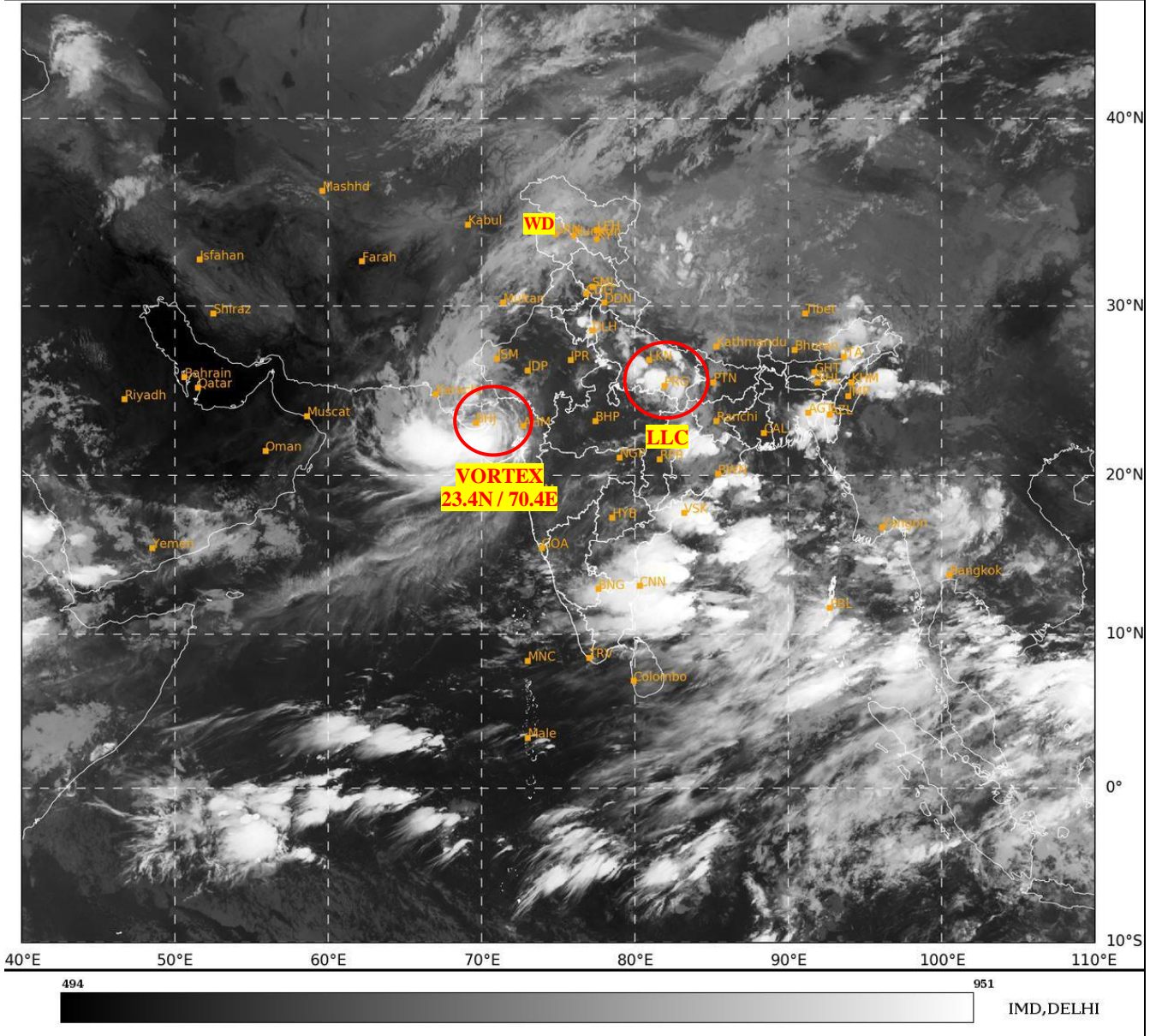




**SATELLITE BULLETIN BASED ON SATELLITE
IMAGERIES AND PRODUCTS**
28.08.2024 TIME 0000 UTC

SAT : INSAT-3DR IMG
IMG_TIR1 10.8 um
LIC Mercator

28-08-2024/(0015 to 0042) GMT
28-08-2024/(0545 to 0612) IST



TCIN50 DEMS 280000

SATELLITE BULLETIN BASED ON INSAT-3DR PIC OF 280015 UTC (.)

REGION COVERED BETWEEN LAT 50.0°N TO 35.0°S AND LONG 40.0°E TO 125.0°E (.)

SALIENT FEATURES:-

VORTEX OVER NORTH-WEST GUJARAT & N/HOOD:-

VORTEX OVER NW GUJ & N/HOOD CENTERED **WITHIN HALF A DEGREE OF 23.4N / 70.4E** (.) ASSTD SCT TO BKN LOW/MED CLOUDS WITH EMBDD INT TO V INT CONVTN OVER KUTCH SAURASHTRA NE ARSEA GULF OF KUTCH (MINIMUM **CTT MINUS 93 DEG CEL**) MOD TO INT CONVTN OVER S PAK SW RAJ E GUJ REGION GULF OF CAMBAY (MINIMUM **CTT MINUS 50-60 DEG CEL**) (.)

LLC OVER EAST UTTAR PRADESH & N/HOOD:-

LOW LEVEL CIRCULATION (**LLC**) OVER E UP & N/HOOD (.) ASSTD SCT TO BKN LOW/MED CLOUDS WITH EMBDD INT TO V INT CONVTN OVER UP (MINIMUM **CTT MINUS 80-93 DEG CEL**) AND MOD TO INT CONVTN OVER NE MP N CHTGH ADJ S JHRKND SW BHR (.)

WESTERN DISTURBANCE (WD):-

SCT MULTILAYERED CLOUDS OVER N PAK J&K LADAKH TIBET ADJ CHINA IN ASSW **WD** OVER THE AREA (.)

CONVECTIVE / THUNDERSTORM ACTIVITY:-

INTENSE TO VERY INTENSE CONVECTIVE / THUNDERSTORM ACTIVITY OBSERVED OVER SE HARY UP N CHTGH N ORS KUTCH SAURASHTRA GULF OF KUTCH COTL AP N TN NE ASSAM S ARUPR MIZO TRP & NICOBAR ILS (MINIMUM **CTT MINUS 70-93** DEG CEL) (.)

MODERATE TO INTENSE CONVECTIVE / THUNDERSTORM ACTIVITY OBSERVED OVER SPJB DLH S JHRKND S CHTGH S ORS SW RAJ N MP E GUJ GULF OF CAMBAY SIK S RYLSM S TN ANDAMAN ILS (MINIMUM **CTT MINUS 50-70** DEG CEL) (.)

CLOUDS DESCRIPTION WITHIN INDIA:-

NORTH:-

SCT TO BKN LOW/MED CLOUDS WITH EMBDD INT TO V INT CONVTN OVER UP SE HARY AND MOD TO INT CONVTN OVER DLH (.) SCT LOW/MED CLOUDS WITH EMBDD WK TO MOD CONVTN OVER LADAKH J&K HP UTRKND PJB W HARY (.)

EAST:-

SCT TO BKN LOW/MED CLOUDS WITH EMBDD INT TO V INT CONVTN OVER N CHTGH EXT S JHRKND N ORS E ASSAM S ARUPR MIZO TRP (.) SCT LOW/MED CLOUDS WITH EMBDD MOD TO INT CONVTN OVER S ORS NAGA NORTH MANI S BD AND WK TO MOD CONVTN OVER W BHR NW JHRKND S CHTGH E MEGHA (.) SCT LOW/MED CLOUDS OVER GWB SHWB SKM WEST ASSAM W MEGHA (.)

WEST:-

SCT TO BKN LOW/MED CLOUDS WITH EMBDD INT TO V INT CONVTN OVER KUTCH SAURASHTRA GULF OF KUTCH (.) SCT LOW/MED CLOUDS WITH EMBDD MOD TO INT CONVTN OVER SW RAJ EXT N MP E GUJ REGION GULF OF CAMBAY AND WK TO MOD CONVTN OVER REST RAJ SE MP VID (.) SCT LOW/MED CLOUDS OVER SW MP REST MAHA & GOA (.)

SOUTH:-

SCT LOW/MED CLOUDS WITH EMBDD INT TO INT CONVTN OVER COTL AP N TN (.) SCT LOW/MED CLOUDS WITH EMBDD MOD TO INT CONVTN OVER SOUTH RYLSM NICOBAR ILS AND WK TO MOD CONVTN OVER TLNGN N RYLSM KRNTK KER S TN LKSDP ILS ANDAMAN ILS (.)

ARABIAN SEA:-

SCT TO BKN LOW/MED CLOUDS WITH EMBDD INT TO V INT CONVTN OVER NE ARSEA & GULF OF KUTCH (.) SCT LOW/MED CLOUDS WITH EMBDD MOD TO INT CONVTN OVER GULF OF CAMBAY CENTRAL ARSEA AND WK TO MOD CONVTN OVER NW & SOUTH ARSEA LKSDP ILS & COMORIN AREA (.)

BAY OF BENGAL & ANDAMAN SEA:-

SCT LOW/MED CLOUDS WITH EMBDD INT TO V INT CONVTN OVER BAY SOUTH ANDAMAN SEA (.) SCT LOW/MED CLOUDS WITH EMBDD MOD TO INT CONVTN OVER NORTH BAY NORTH ANDAMAN SEA ARAKAN COAST GULF OF MARTABAN & TENASSERIM COAST (.)

CLOUDS DESCRIPTION OUTSIDE INDIA:-

SCT LOW/MED CLOUDS WITH EMBDD MOD TO INT CONVTN OVER PAK NEPAL BHUTAN TIBET CHINA YELLOW SEA EAST CHINA SEA MYANMAR THAILAND GULF OF THAILAND CAMBODIA LAOS VIETNAM SUMATRA STR OF MALACCA MALAYSIA BORNEO SOUTH CHINA SEA JAVA ILS & SEA CELEBES ILS & SEA PHILIPPINES SULU SEA AND OVER INDIAN OCEAN BET LAT 5.0N TO 10.0S LONG 45.0E TO 100.0E (.)

TOO 28/0725 HRS IST=

NNNN

LEGEND:-

REGION	NORTH	J&K HP PJB HARY DLH UP UTRKND
	EAST	BHR JHRKND CHTGH OR WB SKM NORTH- EAST STATES
	WEST	RAJ MP GUJ MAHA GOA
	SOUTH	TLNGN AP KRNTK KER TN LKSDP ANDAMAN & NICOBAR ILS
CLOUD DISTRIBUTION	ISOL	ISOLATED (LESS THAN 25%)
	SCT	SCATTERED (25 TO 50%)
	BKN	BROKEN (51 TO 75%)
	SLD	SOLID (GREATER THAN 75%)
CLOUDS TOP TEMPERATURE	CTT	CLOUD TOP TEMPERATURE
CONVECTION	WK CONVTN	WEAK CONVECTION (CTT GREATER THAN -25°C)
	MOD CONVTN	MODERATE CONVECTION (CTT BETWEEN -25°C TO -40°C)
	INT CONVTN	INTENSE CONVECTION (CTT BETWEEN -41°C TO -70°C)
	V INT CONVTN	VERY INTENSE CONVECTION (CTT LESS THAN -70°C)
METEOROLOGICAL SUB- DIVISIONS, STATES & UNION TERRITORIES	ARUPR	ARUNACHAL PRADESH
	BHR	BIHAR
	CHTGH	CHHATTISGARH
	COTL AP	COASTAL ANDHRA PRADESH
	COTL KRNTK	COASTAL KARNATAKA
	COTL ORS	COASTAL ORISSA
	GUJ	GUJARAT
	GWB	GANGETIC WEST BENGAL
	HARY	HARYANA
	DLH	DELHI
	HP	HIMACHAL PRADESH
	J&K	JAMMU AND KASHMIR
	JHRKND	JHARKHAND
	KER	KERALA
	KKN	KONKAN
	LKSDP	LAKSHADWEEP
	M MAHA	MADHYA MAHARASHTRA
	MAHA	MAHARASHTRA
	MANI	MANIPUR
	MEGHA	MEGHALAYA

	MIZO	MIZORAM
	MP	MADHYA PRADESH
	MRTHWD	MARATHWADA
	NAGA	NAGALAND
	N COTL AP	NORTH COASTAL ANDHRA PRADESH
	NIK	NORTH INTERIOR KARNATAKA
	ORS	ORISSA
	PJB	PUNJAB
	RAJ	RAJASTHAN
	RYLSM	RAYALASEEMA
	SAU & KUTCH	SAURASHTRA & KUTCH
	SHWB	SUB-HIMALAYAN WEST BENGAL
	SIK	SOUTH INTERIOR KARNATAKA
	SKM	SIKKIM
	TLNGN	TELANGANA
	TN	TAMIL NADU
	TRP	TRIPURA
	UP	UTTAR PRADESH
	UTRKND	UTTARAKHAND
	VID	VIDHARBHA
	SHWB	SUB HIMALAYAN WEST BENGAL
	GWB	GANGETIC WEST BENGAL
	ARSEA	ARABIAN SEA
	ILS	ISLANDS
MISCELLANEOUS	ASSW	IN ASSOCIATION WITH
	ASSTD	ASSOCIATED
	LLC	LOW LEVEL CIRCULATION
	EMBDD	EMBEDDED
	N/HOOD	NEIGHBOURHOOD
	EXT	EXTREME