

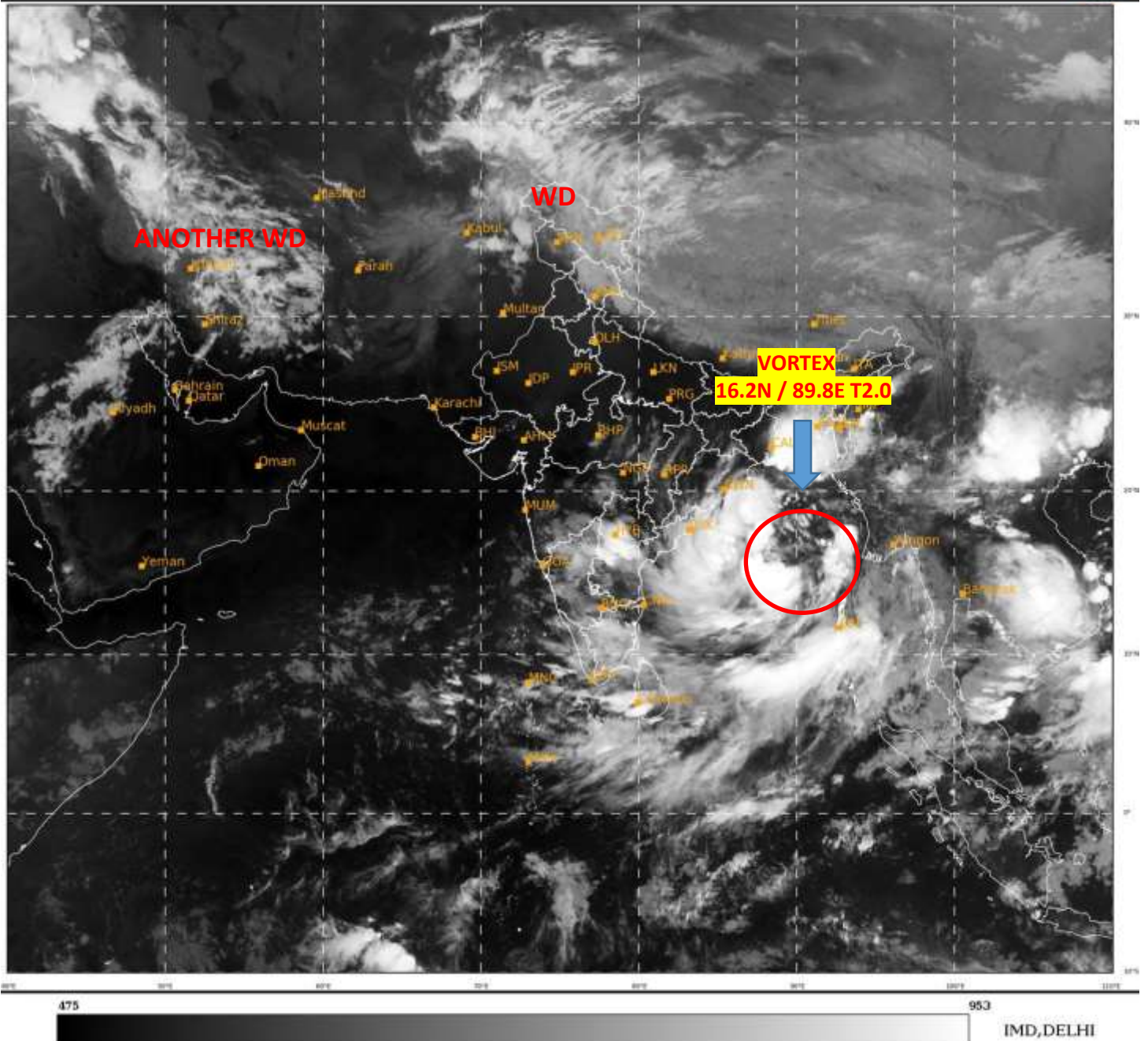


**SATELLITE BULLETIN BASED ON SATELLITE IMAGERIES  
 AND PRODUCTS**

**23.05.2021 TIME 1800 UTC**

SAT : INSAT-3D IMG  
 IMG\_TIR1 10.8 um  
 LIC Mercator

23-05-2021/(1800 to 1826) GMT  
 23-05-2021/(2330 to 2356) IST



IMD, DELHI

TCIN50 DEMS 231800

SATELLITE BULLETIN BASED ON INSAT-3D PIC OF 231800 UTC (.)

REGION COVERED BETWEEN LAT 50.0°N TO 30.0°S AND LONG 40.0°E TO 125.0°E (.)

**SALIENT FEATURES:-**

**VORTEX OVER EAST-CENTRAL BAY OF BENGAL & N/HOOD:-**

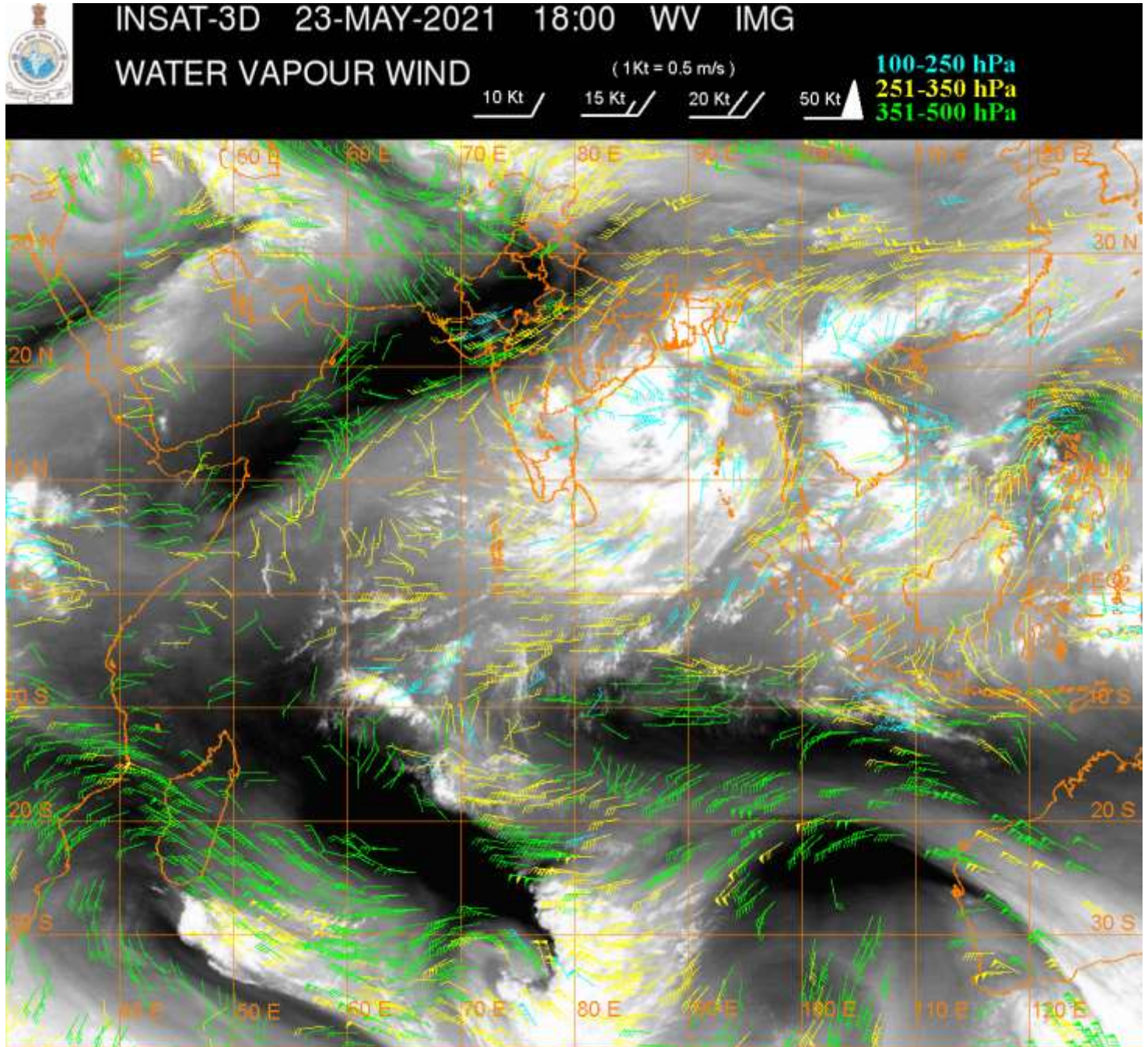
VORTEX OVER EAST-CENTRAL BAY OF BENGAL & N/HOOD HAS FURTHER INTENSIFIED AND NOW LAY CENTERED **WITHIN HALF A DEGREE OF 16.2N/89.8E** (.) INTENSITY **T2.0 RPT T2.0** (.) **SHEAR PATTERN** (.) ASSTD BKN LOW/MED CLOUDS WITH EMBDD INT TO V INT CONVTN OVER BAY BET LAT 7.0N TO 20.0N AND LONG 82.0E TO 93.0E ALSO OVER ANDAMAN & NICOBAR ILS ADJ ANDAMAN SEA (MINIMUM CTT MINUS **93** DEG C) (.)



**WESTERN DISTURBANCE (WD):-**

SCT MULTILAYERED CLOUDS OVER N PAK LADAKH J&K HP N UTRKND AND OVER AREA BET LAT 37.0N TO 44.0N LONG 66.0E TO 80.0E IN ASSW **WD** OVER THE AREA (.)

SCT MULTILAYERED CLOUDS OVER S CASPIAN SEA IRAN & N/HOOD IN ASSW ANOTHER **WD** OVER THE AREA (.)



**CLOUDS DESCRIPTION WITHIN INDIA:-**

**NORTH:-**

SCT LOW/MED CLOUDS WITH EMBDD MOD TO INT CONVTN OVER LADAKH AND WK TO MOD CONVTN OVER J&K HP N UTRKND (.) SCT LOW/MED CLOUDS OVER E PJB S UTRKND S UP (.)

**EAST:-**

BKN LOW/MED CLOUDS WITH EMBDD INT TO V INT CONVTN OVER EXT E GWB ADJ S BD (MINIMUM CTT MINUS 93 DEG C) (.) SCT LOW/MED CLOUDS WITH EMBDD MOD TO INT CONVTN OVER E ORS MEGHA MANI MIZO TRP (.) SCT LOW/MED CLOUDS WITH EMBDD ISOL WK TO MOD CONVTN OVER CHTGH W ORS S JHRKND SKM REST NE STATES (.) SCT LOW/MED CLOUDS OVER N JHRKND REST GWB (.)

**WEST:-**

SCT LOW/MED CLOUDS WITH EMBDD ISOL WK TO MOD CONVTN OVER C & E MP MAHA (.) SCT LOW/MED CLOUDS OVER GUJ SAURASHTRA & GOA (.)

**SOUTH:-**

SCT LOW/MED CLOUDS WITH EMBDD INT TO V INT CONVTN OVER S TLNGN ADJ N RYLAM (MINIMUM CTT MINUS 93 DEG C) ANDAMAN & NICOBAR ILS (MINIMUM CTT MINUS 93 DEG C)  
(.) SCT LOW/MED CLOUDS WITH EMBDD MOD TO INT CONVTN OVER COTL AP REST RYLAM KRNTK KER TN (.) SCT LOW/MED CLOUDS WITH EMBDD WK TO MOD CONVTN OVER N TLNGN & LKSDP (.)

**ARABIAN SEA:-**

SCT LOW/MED CLOUDS WITH EMBDD MOD TO INT CONVTN OVER SE ARSEA & COMORIN (.)

**BAY OF BENGAL & ANDAMAN SEA:-**

BKN LOW/MED CLOUDS WITH EMBDD INT TO V INT CONVTN OVER BAY NORTH OF LAT 7.0N ALSO OVER ANDAMAN & NICOBAR ILS ADJ ANDAMAN SEA (MINIMUM CTT MINUS 93 DEG C)  
(.) SCT LOW/MED CLOUDS WITH EMBDD MOD TO INT CONVTN OVER REST S BAY & REST ANDAMAN SEA GULF OF MARTABAN (.)

**CLOUDS DESCRIPTION OUTSIDE INDIA:-**

SCT LOW/MED CLOUDS WITH EMBDD MOD TO INT CONVTN OVER SRILANKA GULF OF MANNAR N PAK TIBET CHINA SEA MYANMAR S THAILAND GULF OF THAILAND CAMBODIA LAOS VIETNAM SUMATRA STR OF MALACCA MALAY PENINSULA BORNEO S CHINA SEA CELEBES ILS & SEA PHILIPPINES YELLOW SEA E CHINA AND OVER INDIAN OCEAN BET LAT 5.0N TO 7.0S LONG 75.0E TO 95.0E AND BET LAT 7.0S TO 30.0S LONG 60.0E TO 90.0E (.)

TOO 24/0050EF=

NNNN

**LEGEND:-**

REGION	NORTH	J&K HP PJB HARY DLH UP UTRKND
	EAST	BHR JHRKND CHTGH ORS WB SKMNORTH-EAST STATES
	WEST	RAJ MP GUJ MAHA GOA
	SOUTH	TLNGN AP KRNTK KER TN LKSDP ANDAMAN & NICOBAR ILS

CLOUD DISTRIBUTION	ISOL	ISOLATED (LESS THAN 25%)
	SCT	SCATTERED (25 TO 50%)
	BKN	BROKEN (51 TO 75%)
	SLD	SOLID (GREATER THAN 75%)
CLOUDS TOP TEMPERATURE	CTT	CLOUD TOP TEMPERATURE
CONVECTION	WK CONVTN	WEAK CONVECTION (CTT GREATER THAN -25°C)
	MOD CONVTN	MODERATE CONVECTION (CTT BETWEEN -25°C TO -40°C)
	INT CONVTN	INTENSE CONVECTION (CTT BETWEEN -41°C TO -70°C)

	<b>V INT CONV TN</b>	<b>VERY INTENSE CONVECTION (CTT LESS THAN -70°C)</b>
<b>METEOROLOGICAL SUB-DIVISIONS, STATES &amp; UNION TERRITORIES</b>	<b>ARUPR</b>	<b>ARUNACHAL PRADESH</b>
	<b>BHR</b>	<b>BIHAR</b>
	<b>CHTGH</b>	<b>CHHATTISGARH</b>
	<b>COTL AP</b>	<b>COASTAL ANDHRA PRADESH</b>
	<b>COTL KRNTK</b>	<b>COASTAL KARNATAKA</b>
	<b>COTL ORS</b>	<b>COASTAL ORISSA</b>
	<b>GUJ</b>	<b>GUJARAT</b>
	<b>GWB</b>	<b>GANGETIC WEST BENGAL</b>
	<b>HARY</b>	<b>HARYANA</b>
	<b>DLH</b>	<b>DELHI</b>
	<b>HP</b>	<b>HIMACHAL PRADESH</b>
	<b>J&amp;K</b>	<b>JAMMU AND KASHMIR</b>
	<b>JHRKND</b>	<b>JHARKHAND</b>
	<b>KER</b>	<b>KERALA</b>
	<b>KKN</b>	<b>KONKAN</b>
	<b>LKSDP</b>	<b>LAKSHADWEEP</b>
	<b>M MAHA</b>	<b>MADHYA MAHARASHTRA</b>
	<b>MAHA</b>	<b>MAHARASHTRA</b>
	<b>MANI</b>	<b>MANIPUR</b>
	<b>MEGHA</b>	<b>MEGHALAYA</b>
	<b>MIZO</b>	<b>MIZORAM</b>
	<b>MP</b>	<b>MADHYA PRADESH</b>
	<b>MRTHWD</b>	<b>MARATHWADA</b>
	<b>NAGA</b>	<b>NAGALAND</b>
	<b>N COTL AP</b>	<b>NORTH COASTAL ANDHRA PRADESH</b>
	<b>NIK</b>	<b>NORTH INTERIOR KARNATAKA</b>
	<b>ORS</b>	<b>ORISSA</b>
	<b>PJB</b>	<b>PUNJAB</b>
	<b>RAJ</b>	<b>RAJASTHAN</b>
	<b>RYLSM</b>	<b>RAYALASEEMA</b>
	<b>SAU &amp; KUTCH</b>	<b>SAURASHTRA &amp; KUTCH</b>
	<b>SHWB</b>	<b>SUB-HIMALAYAN WEST BENGAL</b>
	<b>SIK</b>	<b>SOUTH INTERIOR KARNATAKA</b>
	<b>SKM</b>	<b>SIKKIM</b>
<b>TLNGN</b>	<b>TELANGANA</b>	
<b>TN</b>	<b>TAMIL NADU</b>	
<b>TRP</b>	<b>TRIPURA</b>	
<b>UP</b>	<b>UTTAR PRADESH</b>	
<b>UTRKND</b>	<b>UTTARAKHAND</b>	
<b>VID</b>	<b>VIDHARBHA</b>	
<b>SHWB</b>	<b>SUB HIMALAYAN WEST BENGAL</b>	

	<b>GWB</b>	<b>GANGETIC WEST BENGAL</b>
	<b>ARSEA</b>	<b>ARABIAN SEA</b>
	<b>ILS</b>	<b>ISLANDS</b>
<b>MISCELLANEOUS</b>	<b>ASSW</b>	<b>IN ASSOCIATION WITH</b>
	<b>ASSTD</b>	<b>ASSOCIATED</b>
	<b>LLC</b>	<b>LOW LEVEL CIRCULATION</b>
	<b>EMBDD</b>	<b>EMBEDDED</b>
	<b>N/HOOD</b>	<b>NEIGHBOURHOOD</b>
	<b>EXT</b>	<b>EXTREME</b>