



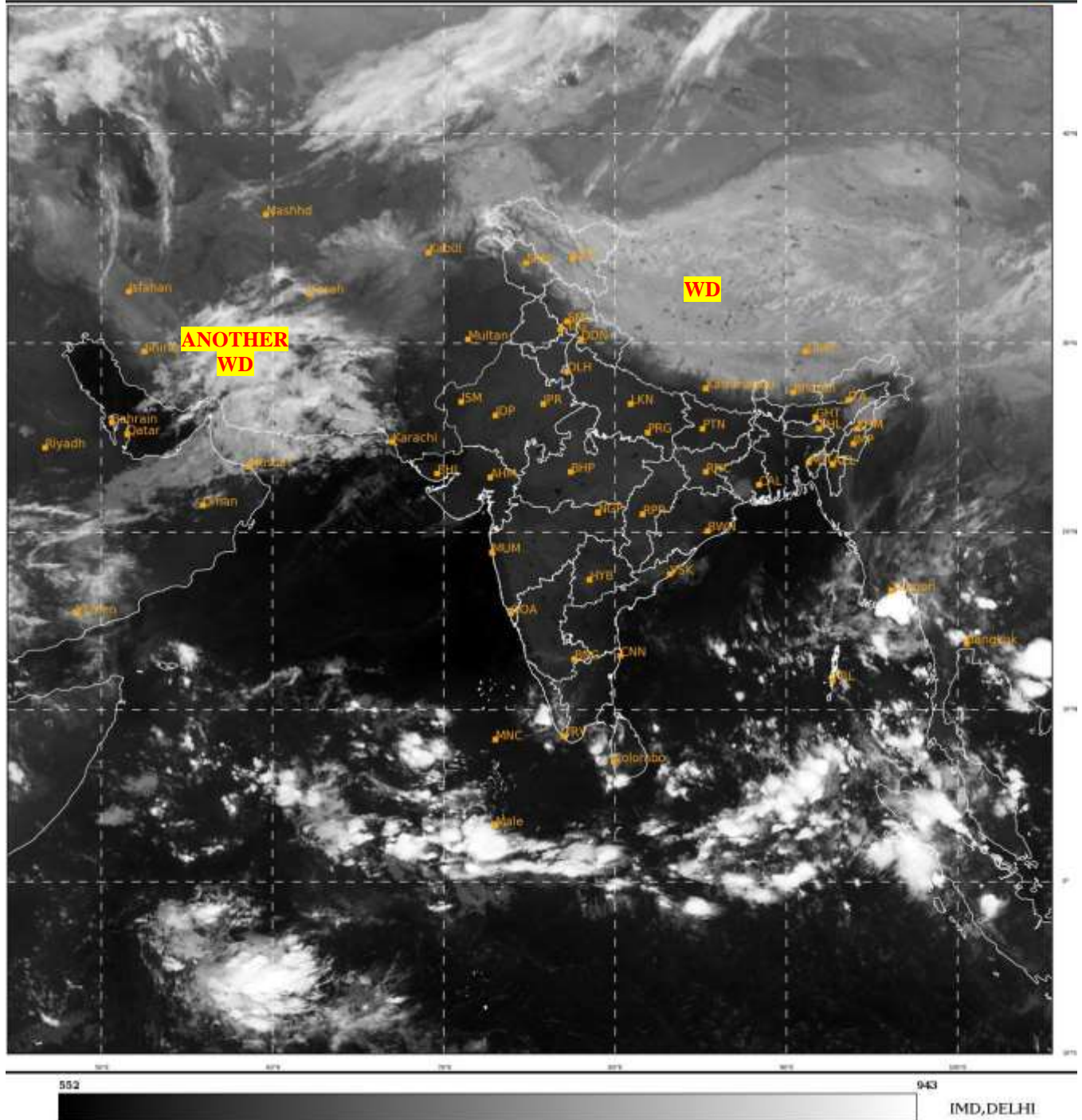
भारत मौसम विज्ञान विभाग  
पृथ्वी विज्ञान मंत्रालय  
India Meteorological Department  
Ministry of Earth Sciences



**SATELLITE BULLETIN BASED ON SATELLITE  
IMAGERIES AND PRODUCTS**  
**26.10.2023 TIME 2100 UTC**

SAT : INSAT-3D IMG  
IMG\_TIR1 10.8 um  
LIC Mercator

26-10-2023/(2100 to 2126) GMT  
27-10-2023/(0230 to 0256) IST



TCIN50 DEMS 262100

SATELLITE BULLETIN BASED ON INSAT-3D PIC OF 262100 UTC (.)

REGION COVERED BETWEEN LAT 50.0°N TO 35.0°S AND LONG 40.0°E TO 125.0°E (.)

**SALIENT FEATURES:-**

**WESTERN DISTURBANCE (WD):-**

SCT MULTILAYERED CLOUDS OVER TIBET ADJ CHINA IN ASSW **WD** OVER THE AREA (.)

SCT MULTILAYERED CLOUDS OVER PERSIAN GULF IRAN AFGAN AND N/HOOD IN ASSW **ANOTHER WD** OVER THE AREA (.)





INSAT-3D 26-OCT-2023 16:30 WV IMG

WATER VAPOUR WIND

( 1Kt = 0.5 m/s )

10 Kt

15 Kt

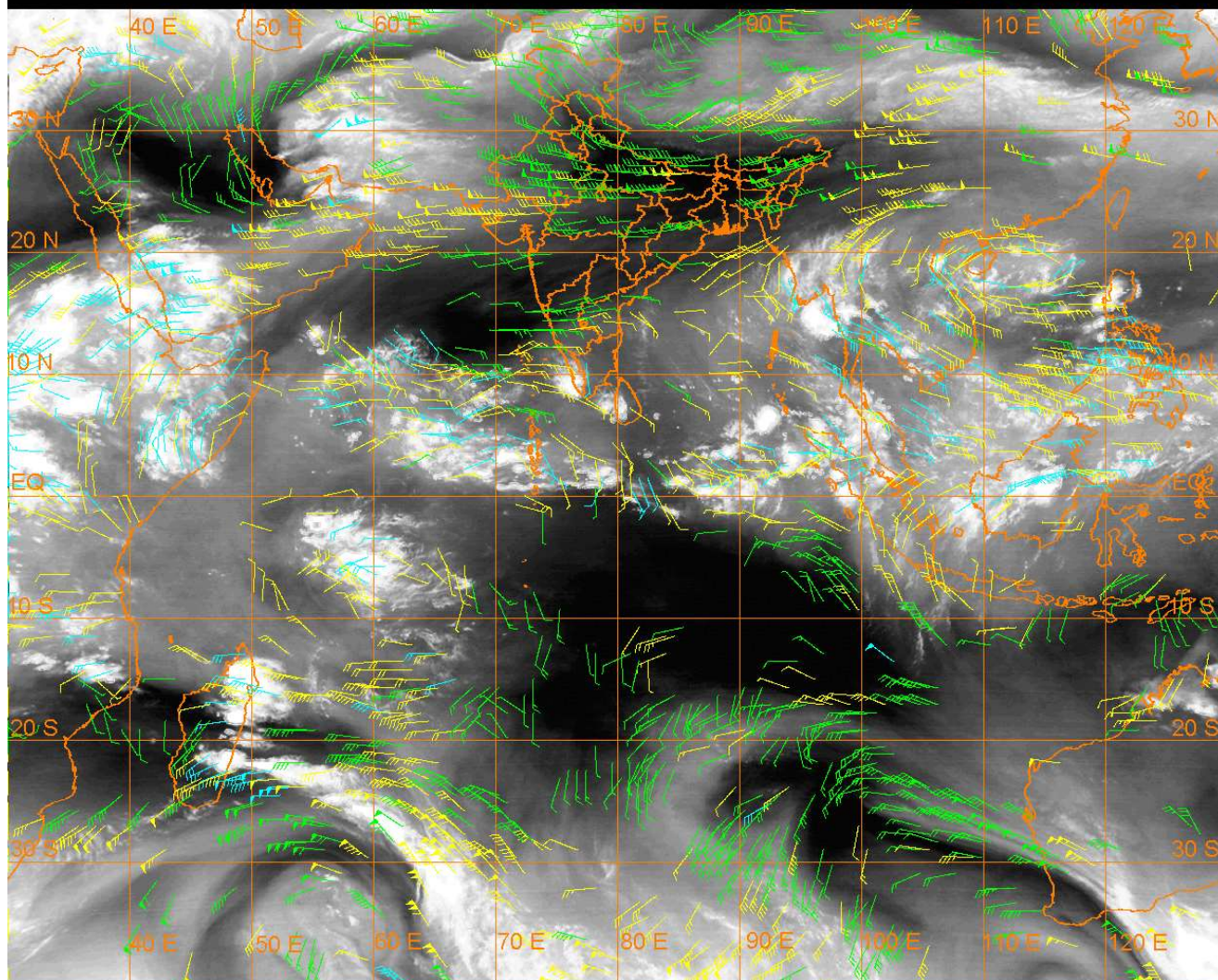
20 Kt

50 Kt

100-250 hPa

251-350 hPa

351-500 hPa



### CLOUDS DESCRIPTION WITHIN INDIA:-

#### NORTH:-

SCT LOW/MED CLOUDS WITH EMBDD ISOL WK TO MOD CONVTN OVER J&K LADAKH N HP N UTRKND (.) ISOL LOW/MED CLOUDS OVER S HP S UTRKND SE UP (.)

#### EAST:-

SCT LOW/MED CLOUDS WITH EMBDD WK CONVTN OVER SKM ARUPR E ASSAM NAGA (.) SCT LOW/MED CLOUDS OVER S BHR JHRKND CHTGH ORS W GWB REST NE STATES (.)

#### WEST:-

SCT LOW/MED CLOUDS OVER SW GUJ (.)

#### SOUTH:-

SCT LOW/MED CLOUDS WITH EMBDD WK TO MOD CONVTN OVER KER NICOBAR ILS (.) SCT LOW/MED CLOUDS OVER S SIK N COTL AP TN ANDAMAN ILS (.)

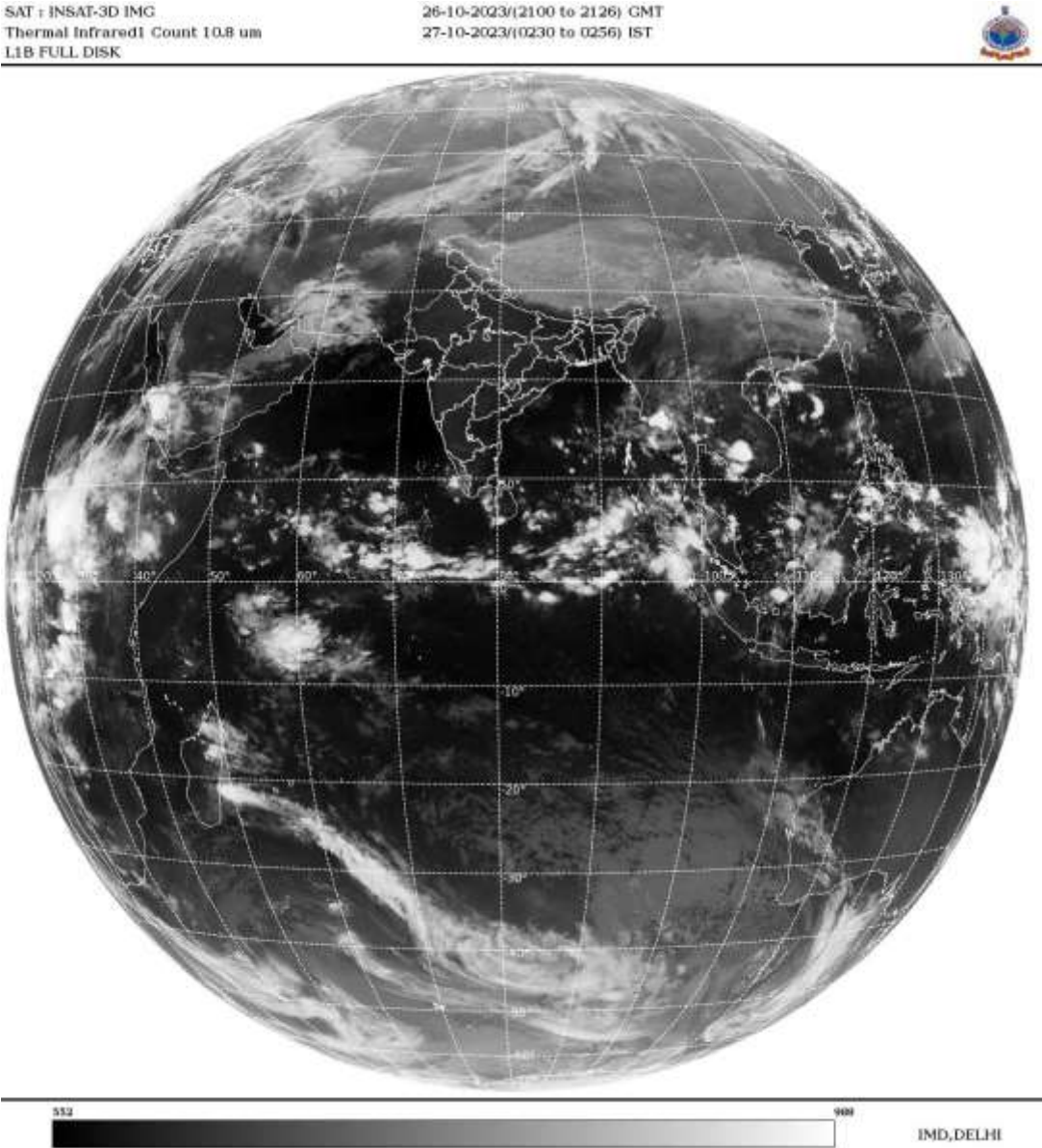
#### ARABIAN SEA:-

SCT LOW/MED CLOUDS WITH EMBDD MOD TO INT CONVTN OVER SOUTH PARTS OF WC ARSEA SOUTH ARSEA COMORIN AREA AND WK TO MOD CONVTN OVER NORTH ARSEA (.)

#### BAY OF BENGAL & ANDAMAN SEA:-

SCT LOW/MED CLOUDS WITH EMBDD INT TO V INT CONVTN OVER SE BAY ANDAMAN SEA AND GULF OF MARTABAN (.) SCT LOW/MOD CLOUDS WITH EMBDD MOD TO INT CONVTN OVER CENTRAL & SW BAY (.)

CLOUDS DESCRIPTION OUTSIDE INDIA:-



SCT LOW/MED CLOUDS WITH EMBDD MOD TO INT CONVTN OVER WEST SRI LANKA GULF OF MANNAR MALDIVES S PAK TIBET CHINA EAST CHINA SEA S MYANMAR THAILAND GULF OF THAILAND CAMBODIA GULF OF TONKIN HAINAN SUMATRA ADJ W COAST STR OF MALACCA MALAYSIA BORNEO SOUTH CHINA SEA CELEBES SEA PHILIPPINES SULU SEA MADAGASCAR AND OVER INDIAN OCEAN BET LAT 5.0N TO 2.0S LONG 50.0E TO 100.0E AND BET LAT 2.0S TO 35.0S LONG 50.0E TO 70.0E (.)

TOO 27/0350 HRS IST=

NNNN

LEGEND:-

REGION	NORTH	J&K HP PJB HARY DLH UP UTRKND
	EAST	BHR JHRKND CHTGH OR WB SKM NORTH- EAST STATES
	WEST	RAJ MP GUJ MAHA GOA
	SOUTH	TLNGN AP KRNTK KER TN LKSDP ANDAMAN & NICOBAR ILS
CLOUD DISTRIBUTION	ISOL	ISOLATED (LESS THAN 25%)
	SCT	SCATTERED (25 TO 50%)
	BKN	BROKEN (51 TO 75%)
	SLD	SOLID (GREATER THAN 75%)



<b>CLOUDS TOP TEMPERATURE</b>	<b>CTT</b>	<b>CLOUD TOP TEMPERATURE</b>
<b>CONVECTION</b>	<b>WK CONVTN</b>	<b>WEAK CONVECTION</b> <b>(CTT GREATER THAN –25□C)</b>
	<b>MOD CONVTN</b>	<b>MODERATE CONVECTION</b> <b>(CTT BETWEEN -25□C TO -40□C)</b>
	<b>INT CONVTN</b>	<b>INTENSE CONVECTION</b> <b>(CTT BETWEEN -41□C TO -70□C)</b>
	<b>V INT CONVTN</b>	<b>VERY INTENSE CONVECTION</b> <b>(CTT LESS THAN -70□C)</b>
<b>METEOROLOGICAL SUB- DIVISIONS, STATES &amp; UNION TERRITORIES</b>	<b>ARUPR</b>	<b>ARUNACHAL PRADESH</b>
	<b>BHR</b>	<b>BIHAR</b>
	<b>CHTGH</b>	<b>CHHATTISGARH</b>
	<b>COTL AP</b>	<b>COASTAL ANDHRA PRADESH</b>
	<b>COTL KRNTK</b>	<b>COASTAL KARNATAKA</b>
	<b>COTL ORS</b>	<b>COASTAL ORISSA</b>
	<b>GUJ</b>	<b>GUJARAT</b>
	<b>GWB</b>	<b>GANGETIC WEST BENGAL</b>
	<b>HARY</b>	<b>HARYANA</b>
	<b>DLH</b>	<b>DELHI</b>
	<b>HP</b>	<b>HIMACHAL PRADESH</b>
	<b>J&amp;K</b>	<b>JAMMU AND KASHMIR</b>
	<b>JHRKND</b>	<b>JHARKHAND</b>
	<b>KER</b>	<b>KERALA</b>
	<b>KKN</b>	<b>KONKAN</b>
	<b>LKSDP</b>	<b>LAKSHADWEEP</b>
	<b>M MAHA</b>	<b>MADHYA MAHARASHTRA</b>
	<b>MAHA</b>	<b>MAHARASHTRA</b>
	<b>MANI</b>	<b>MANIPUR</b>
	<b>MEGHA</b>	<b>MEGHALAYA</b>
	<b>MIZO</b>	<b>MIZORAM</b>
	<b>MP</b>	<b>MADHYA PRADESH</b>
	<b>MRTHWD</b>	<b>MARATHWADA</b>
	<b>NAGA</b>	<b>NAGALAND</b>
	<b>N COTL AP</b>	<b>NORTH COASTAL ANDHRA PRADESH</b>
	<b>NIK</b>	<b>NORTH INTERIOR KARNATAKA</b>
	<b>ORS</b>	<b>ORISSA</b>
	<b>PJB</b>	<b>PUNJAB</b>
	<b>RAJ</b>	<b>RAJASTHAN</b>
	<b>RYLSM</b>	<b>RAYALASEEMA</b>
	<b>SAU &amp; KUTCH</b>	<b>SAURASHTRA &amp; KUTCH</b>
	<b>SHWB</b>	<b>SUB-HIMALAYAN WEST BENGAL</b>
	<b>SIK</b>	<b>SOUTH INTERIOR KARNATAKA</b>
	<b>SKM</b>	<b>SIKKIM</b>
	<b>TLNGN</b>	<b>TELANGANA</b>
	<b>TN</b>	<b>TAMIL NADU</b>
	<b>TRP</b>	<b>TRIPURA</b>
	<b>UP</b>	<b>UTTAR PRADESH</b>

	<b>UTRKND</b>	<b>UTTARAKHAND</b>
	<b>VID</b>	<b>VIDHARBHA</b>
	<b>SHWB</b>	<b>SUB HIMALAYAN WEST BENGAL</b>
	<b>GWB</b>	<b>GANGETIC WEST BENGAL</b>
	<b>ARSEA</b>	<b>ARABIAN SEA</b>
	<b>ILS</b>	<b>ISLANDS</b>
<b>MISCELLANEOUS</b>	<b>ASSW</b>	<b>IN ASSOCIATION WITH</b>
	<b>ASSTD</b>	<b>ASSOCIATED</b>
	<b>LLC</b>	<b>LOW LEVEL CIRCULATION</b>
	<b>EMBDD</b>	<b>EMBEDDED</b>
	<b>N/HOOD</b>	<b>NEIGHBOURHOOD</b>
	<b>EXT</b>	<b>EXTREME</b>