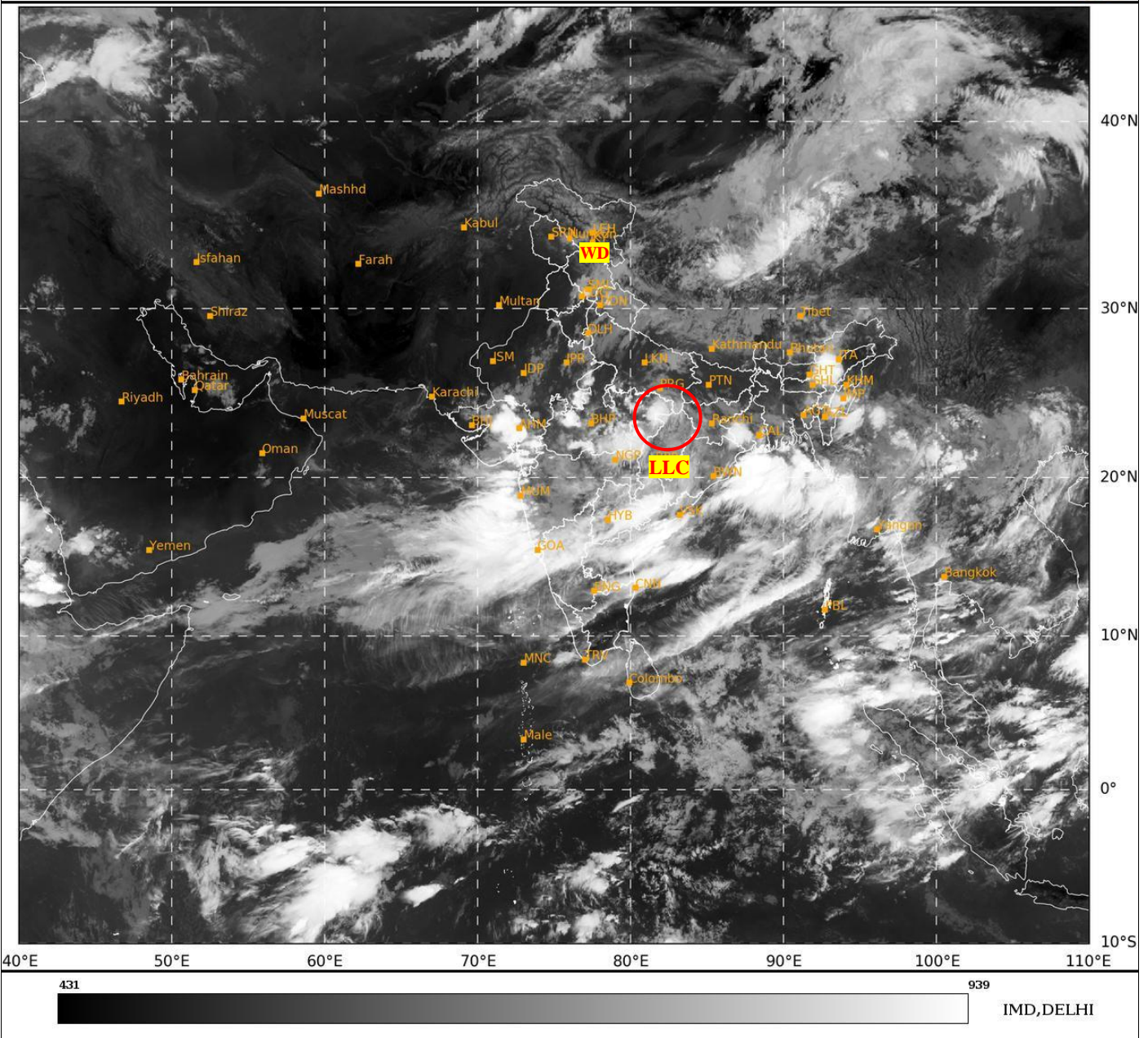




**SATELLITE BULLETIN BASED ON SATELLITE
IMAGERIES AND PRODUCTS**
24.08.2024 TIME 0300 UTC

SAT : INSAT-3DR IMG
IMG_TIR1 10.8 um
LIC Mercator

24-08-2024/(0315 to 0342) GMT
24-08-2024/(0845 to 0912) IST



TCIN50 DEMS 240300

SATELLITE BULLETIN BASED ON INSAT-3DR PIC OF 240315 UTC (.)

REGION COVERED BETWEEN LAT 50.0°N TO 35.0°S AND LONG 40.0°E TO 125.0°E (.)

SALIENT FEATURES:-

LLC OVER NORTH CHTGH ADJ NORTH-EAST MP & N/HOOD:-

LOW LEVEL CIRCULATION (LLC) OVER N CHTGH ADJ NE MP & N/HOOD (.) ASSTD SCT TO BKN LOW/MED CLOUDS WITH EMBDD INT TO V INT CONVTN OVER E MP (MINIMUM CTT MINUS 80 DEG CEL) AND MOD TO INT CONVTN OVER N CHTGH ADJ SE UP & ADJ NW JHRKND (MINIMUM CTT MINUS 50-60 DEG CEL) (.)

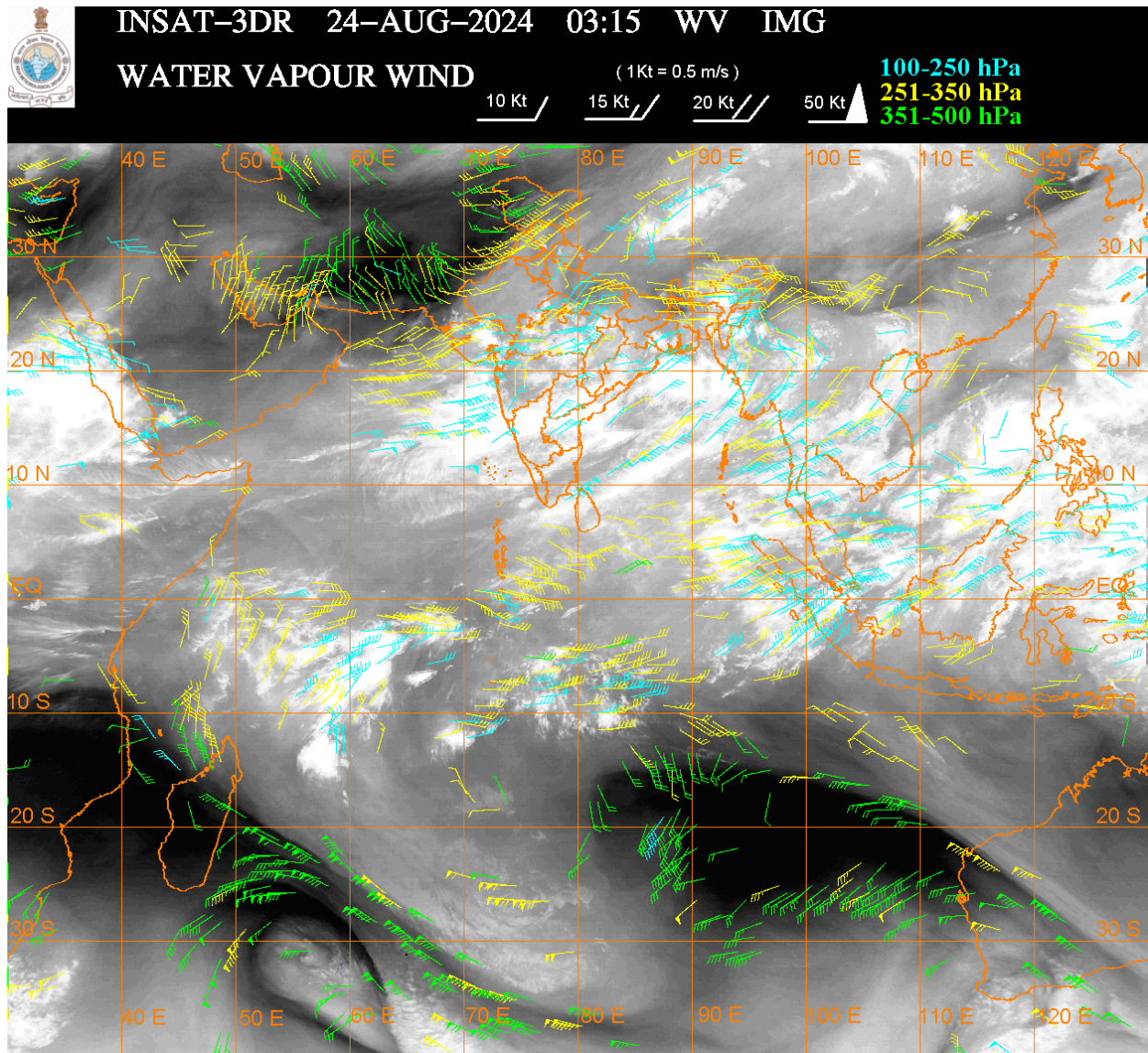
WESTERN DISTURBANCE (WD):-

SCT MULTILAYERED CLOUDS OVER LADAKH J&K HP E PJB UTRKND AND N/HOOD IN ASSW WD OVER THE AREA (.)

CONVECTIVE / THUNDERSTORM ACTIVITY:-

INTENSE TO VERY INTENSE CONVECTIVE / THUNDERSTORM ACTIVITY OBSERVED OVER MP GUJ KKN GOA NIK TLNGN RYLSMA COTL AP CHTGH GWB ASSAM (MINIMUM CTT MINUS 80-93 DEG CEL) (.)

MODERATE TO INTENSE CONVECTIVE / THUNDERSTORM ACTIVITY OBSERVED OVER ORS ARUPR MANI REST MAHA REST KRNTK N KER & NICOBAR ILS (MINIMUM CTT MINUS 50-70 DEG CEL) (.)



CLOUDS DESCRIPTION WITHIN INDIA:-

NORTH:-

SCT TO BKN LOW/MED CLOUDS WITH EMBDD ISOL MOD TO INT CONVTN OVER S HP UTRKND SOUTH UP AND ISOL WK TO MOD CONVTN OVER LADAKH N HP E PJB S HARY DLH N UP (.) SCT LOW/MED CLOUDS OVER J&K W PJB N HARY (.)

EAST:-

SCT TO BKN LOW/MED CLOUDS WITH EMBDD INT TO V INT CONVTN OVER CHTGH SW ORS GWB ASSAM W ARUPR & COTL BD (.) SCT LOW/MED CLOUDS WITH EMBDD MOD TO INT CONVTN OVER REST ORS JHRKND MANI AND WK TO MOD CONVTN OVER S BHR SKM REST NE STATES (.) SCT LOW/MED CLOUDS OVER N BHR SHWB (.)

WEST:-

SCT TO BKN LOW/MED CLOUDS WITH EMBDD INT TO V INT CONVTN OVER MP GUJ KKN ADJ MADHYA MAHA & GOA (.) SCT LOW/MED CLOUDS WITH EMBDD MOD TO INT CONVTN OVER EXT SW RAJ REST MAHA AND ISOL WK TO MOD CONVTN OVER REST RAJ (.)

SOUTH:-

SCT TO BKN LOW/MED CLOUDS WITH EMBDD INT TO V INT CONVTN OVER TLNGN RYLSMA COTL AP NIK & NICOBAR ILS (.) SCT LOW/MED CLOUDS WITH EMBDD MOD TO INT CONVTN OVER REST KRNTK N KER N TN AND WK TO MOD CONVTN OVER S KER S TN LKSDP ILS & ANDAMAN ILS (.)

ARABIAN SEA:-

SCT TO BKN LOW/MED CLOUDS WITH EMBDD INT TO V INT CONVTN OVER EC ARSEA GULF OF CAMBAY (.) SCT LOW/MED CLOUDS WITH EMBDD MOD TO INT CONVTN OVER WC ARSEA & NORTH PARTS OF SOUTH ARSEA AND ISOL WK TO MOD CONVTN OVER REST ARSEA (.)

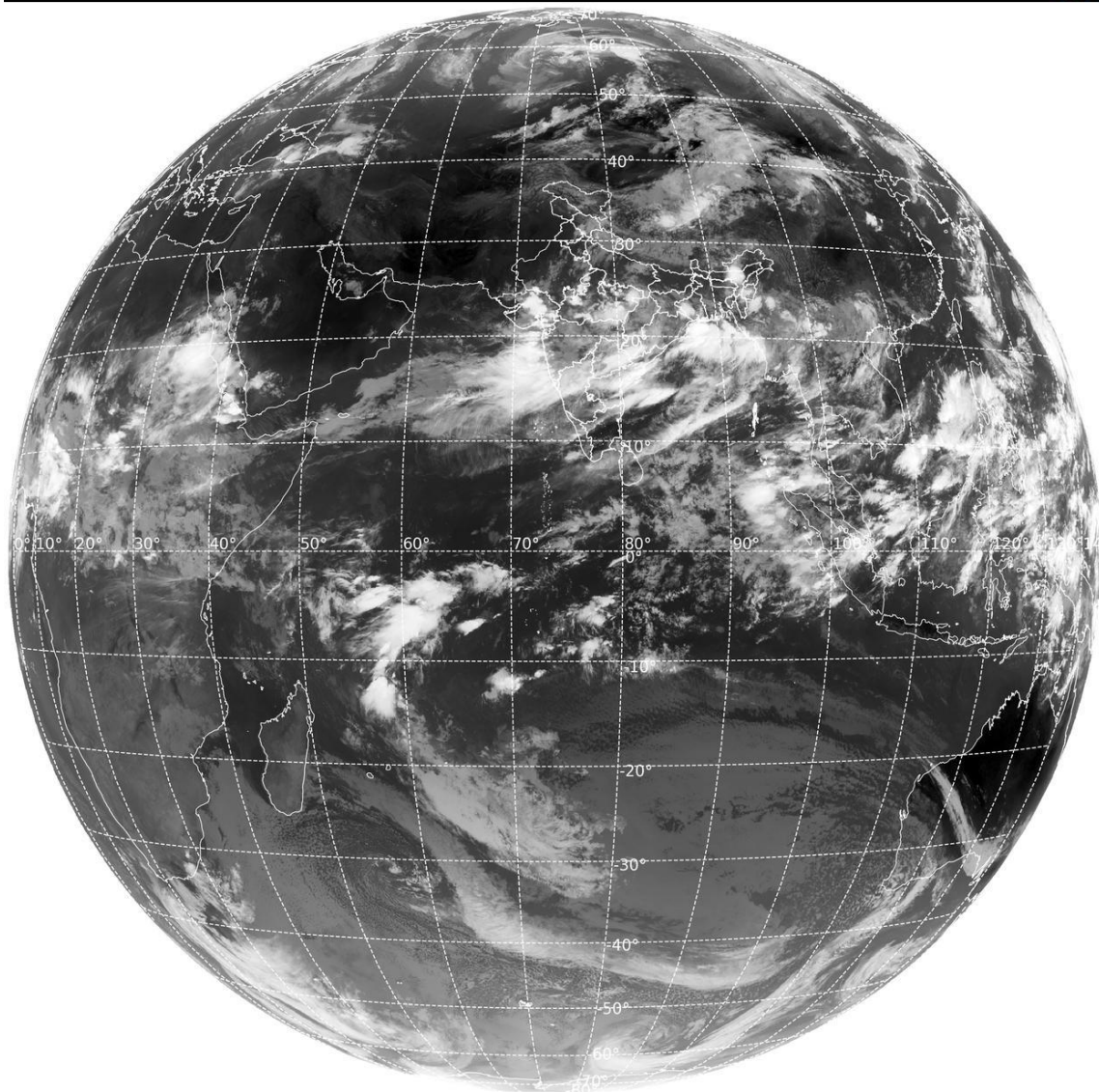
BAY OF BENGAL & ANDAMAN SEA:-

SCT TO BKN LOW/MED CLOUDS WITH EMBDD INT TO V INT CONVTN OVER NORTH & CENTRAL BAY SOUTH ANDAMAN SEA (.) SCT LOW/MED CLOUDS WITH EMBDD MOD TO INT CONVTN OVER S BAY N ANDAMAN SEA & GULF OF MARTABAN (.)

CLOUDS DESCRIPTION OUTSIDE INDIA:-

SAT : INSAT-3DR IMG
Thermal Infrared1 Count 10.8 um
L1B FULL DISK

24-08-2024/(0315 to 0342) GMT
24-08-2024/(0845 to 0912) IST



IMD,DELHI

SCT LOW/MED CLOUDS WITH EMBDD MOD TO INT CONVTN OVER SRI LANKA PALK STR GULF OF MANNAR MALDIVES TIBET CHINA MYANMAR THAILAND GULF OF THAILAND CAMBODIA LAOS VIETNAM GULF OF TONKIN HAINAN SUMATRA STR OF MALACCA MALAYSIA BORNEO SOUTH CHINA SEA CELEBES ILS & SEA PHILIPPINES AND OVER INDIAN OCEAN BET LAT 5.0N TO 12.0S LONG 50.0E TO 100.0E AND BET LAT 12.0S TO 35.0S LONG 55.0E TO 80.0E (.)

TOO 24/0950 HRS IST=

NNNN

LEGEND:-

REGION	NORTH	J&K HP PJB HARY DLH UP UTRKND	
	EAST	BHR JHRKND CHTGH OR WB SKM NORTH- EAST STATES	
	WEST	RAJ MP GUJ MAHA GOA	
	SOUTH	TLNGN AP KRNTK KER TN LKSDP ANDAMAN & NICOBAR ILS	
CLOUD DISTRIBUTION	ISOL	ISOLATED (LESS THAN 25%)	
	SCT	SCATTERED (25 TO 50%)	
	BKN	BROKEN (51 TO 75%)	
	SLD	SOLID (GREATER THAN 75%)	
CLOUDS TOP TEMPERATURE	CTT	CLOUD TOP TEMPERATURE	
CONVECTION	WK CONV TN	WEAK CONVECTION (CTT GREATER THAN -25°C)	
	MOD CONV TN	MODERATE CONVECTION (CTT BETWEEN -25°C TO -40°C)	
	INT CONV TN	INTENSE CONVECTION (CTT BETWEEN -41°C TO -70°C)	
	V INT CONV TN	VERY INTENSE CONVECTION (CTT LESS THAN -70°C)	
METEOROLOGICAL SUB- DIVISIONS, STATES & UNION TERITORIES	ARUPR	ARUNACHAL PRADESH	
	BHR	BIHAR	
	CHTGH	CHHATTISGARH	
	COTL AP	COASTAL ANDHRA PRADESH	
	COTL KRNTK	COASTAL KARNATAKA	
	COTL ORS	COASTAL ORISSA	
	GUJ	GUJARAT	
	GWB	GANGETIC WEST BENGAL	
	HARY	HARYANA	
	DLH	DELHI	
	HP	HIMACHAL PRADESH	
	J&K	JAMMU AND KASHMIR	
	JHRKND	JHARKHAND	
	KER	KERALA	
	KKN	KONKAN	
	LKSDP	LAKSHADWEEP	
	M MAHA	MADHYA MAHARASHTRA	
	MAHA	MAHARASHTRA	
	MANI	MANIPUR	
	MEGHA	MEGHALAYA	
	MIZO	MIZORAM	
	MP	MADHYA PRADESH	
		MRTHWD	MARATHWADA
		NAGA	NAGALAND
N COTL AP		NORTH COASTAL ANDHRA PRADESH	
NIK		NORTH INTERIOR KARNATAKA	

	ORS	ORISSA
	PJB	PUNJAB
	RAJ	RAJASTHAN
	RYLSM	RAYALASEEMA
	SAU & KUTCH	SAURASHTRA & KUTCH
	SHWB	SUB-HIMALAYAN WEST BENGAL
	SIK	SOUTH INTERIOR KARNATAKA
	SKM	SIKKIM
	TLNGN	TELANGANA
	TN	TAMIL NADU
	TRP	TRIPURA
	UP	UTTAR PRADESH
	UTRKND	UTTARAKHAND
	VID	VIDHARBHA
	SHWB	SUB HIMALAYAN WEST BENGAL
	GWB	GANGETIC WEST BENGAL
	ARSEA	ARABIAN SEA
	ILS	ISLANDS
MISCELLANEOUS	ASSW	IN ASSOCIATION WITH
	ASSTD	ASSOCIATED
	LLC	LOW LEVEL CIRCULATION
	EMBDD	EMBEDDED
	N/HOOD	NEIGHBOURHOOD
	EXT	EXTREME