

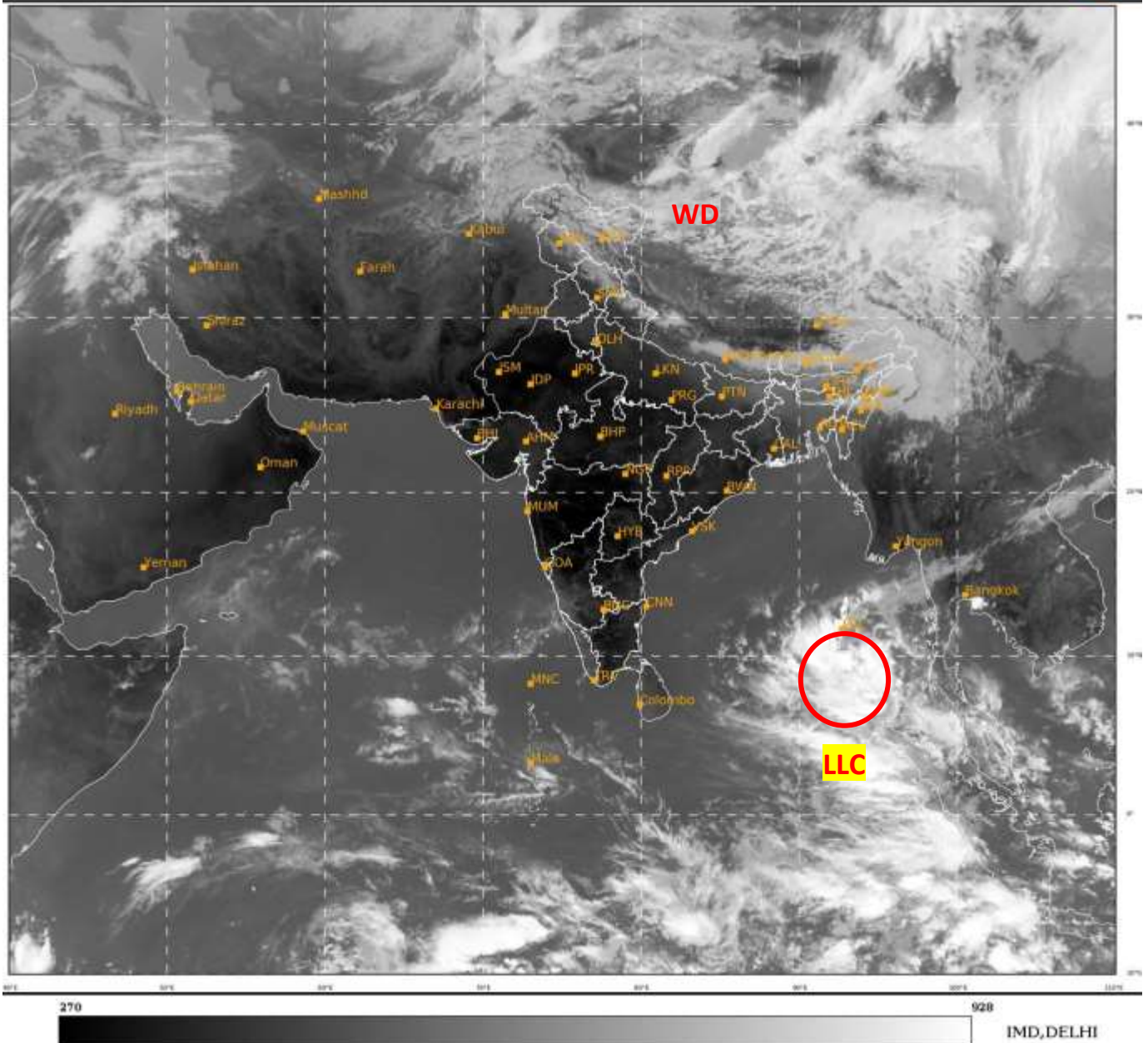


**SATELLITE BULLETIN BASED ON SATELLITE IMAGERIES
AND PRODUCTS**

31.03.2021 TIME 0600 UTC

SAT : INSAT-3D IMG
IMG_TIR1 10.8 um
LIC Mercator

31-03-2021/(0600 to 0626) GMT
31-03-2021/(1130 to 1156) IST



TCIN50 DEMS 310600

SATELLITE BULLETIN BASED ON INSAT-3D PIC OF 310600 UTC (.)

REGION COVERED BETWEEN LAT 50.0°N TO 30.0°S AND LONG 40.0°E TO 125.0°E (.)

SALIENT FEATURES:-

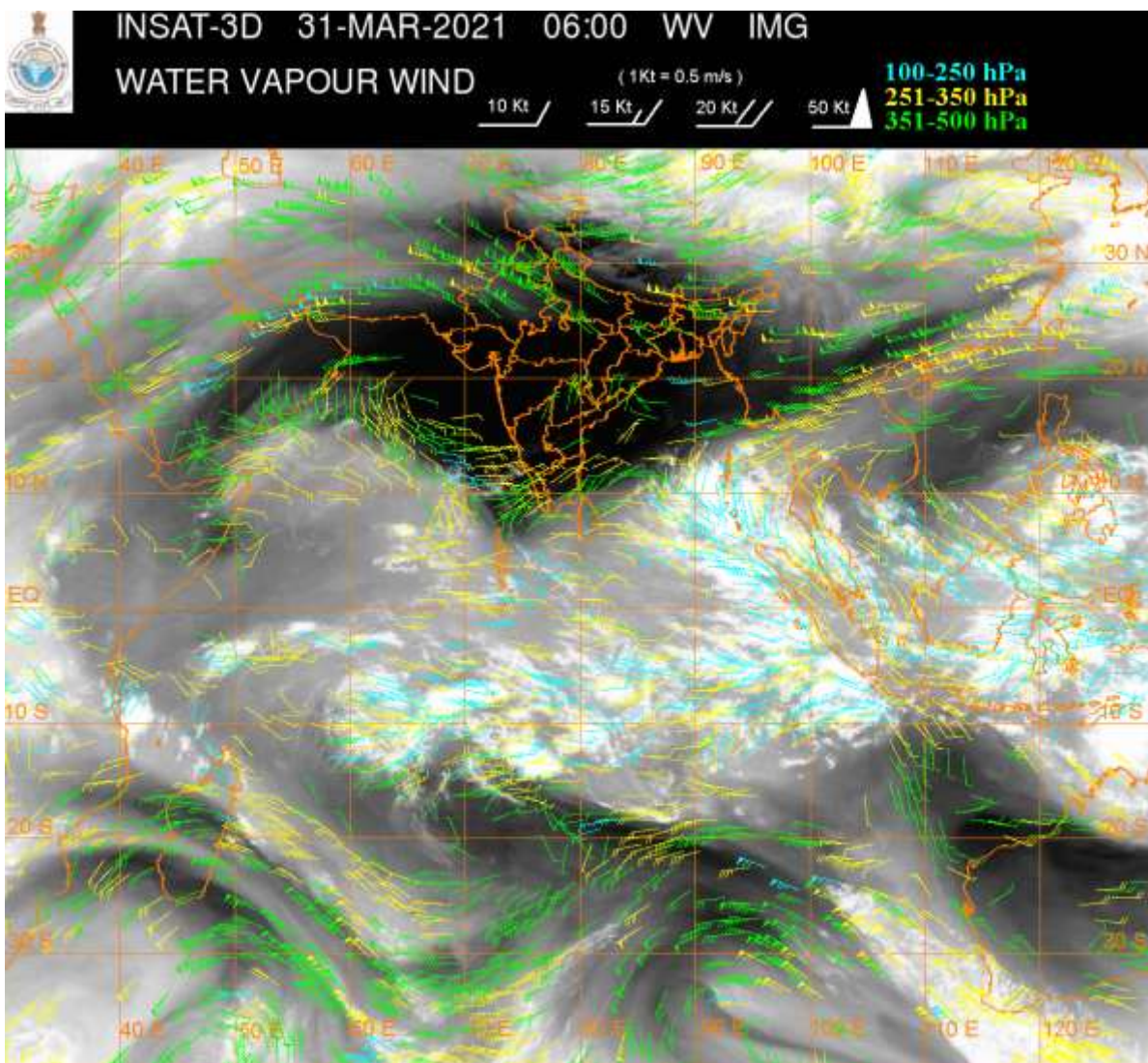
LOW LEVEL CIRCULATION (LLC) OVER SE BAY ADJ S ANDAMAN SEA:-

SCT TO BKN LOW/MED CLOUDS WITH EMBDD INT TO V INT CONVTN OVER SE BAY ADJ S ANDAMAN SEA BET LAT 6.0N TO 12.0N LONG 90.0E TO 96.0E IN ASSW LLC OVER THE AREA (.) MINIMUM CTT MINUS 90 DEG C (.)

Active Region	Convection – Very Intense / Intense / moderate / Weak Mention minimum CTT	24 hour change (Convection: Intensified / steady / weakened) Organization (Increased / decreased)	Evolution during last 24 hours (no of Clusters increased / size increased / organization)	Dynamical Parameters (CIMSS)	Maximum winds reported by ASCAT with direction
SE Bay of Bengal adj S Andaman Sea Areal Extent 6-12N / 90-96E	Very intense (-90° C) Convection lies over SE BoB adj NAS & SAS with multiple LLCCs.	Convection has intensified, shifted eastwards, covers a larger area and is more organized	No of clusters and their size has increased with more formation over S Andaman sea and adj North Adman sea.	Vort - upto 100 s ⁻¹ SE BoB adj SAS Con - 10 s ⁻¹ SAS adj NAS Div -10 s ⁻¹ SE BoB Shear upto 15kts over NAS & SAS Tendency - -5 kts over NAS	15-20 kts near Nicobar islands (0200UTC)

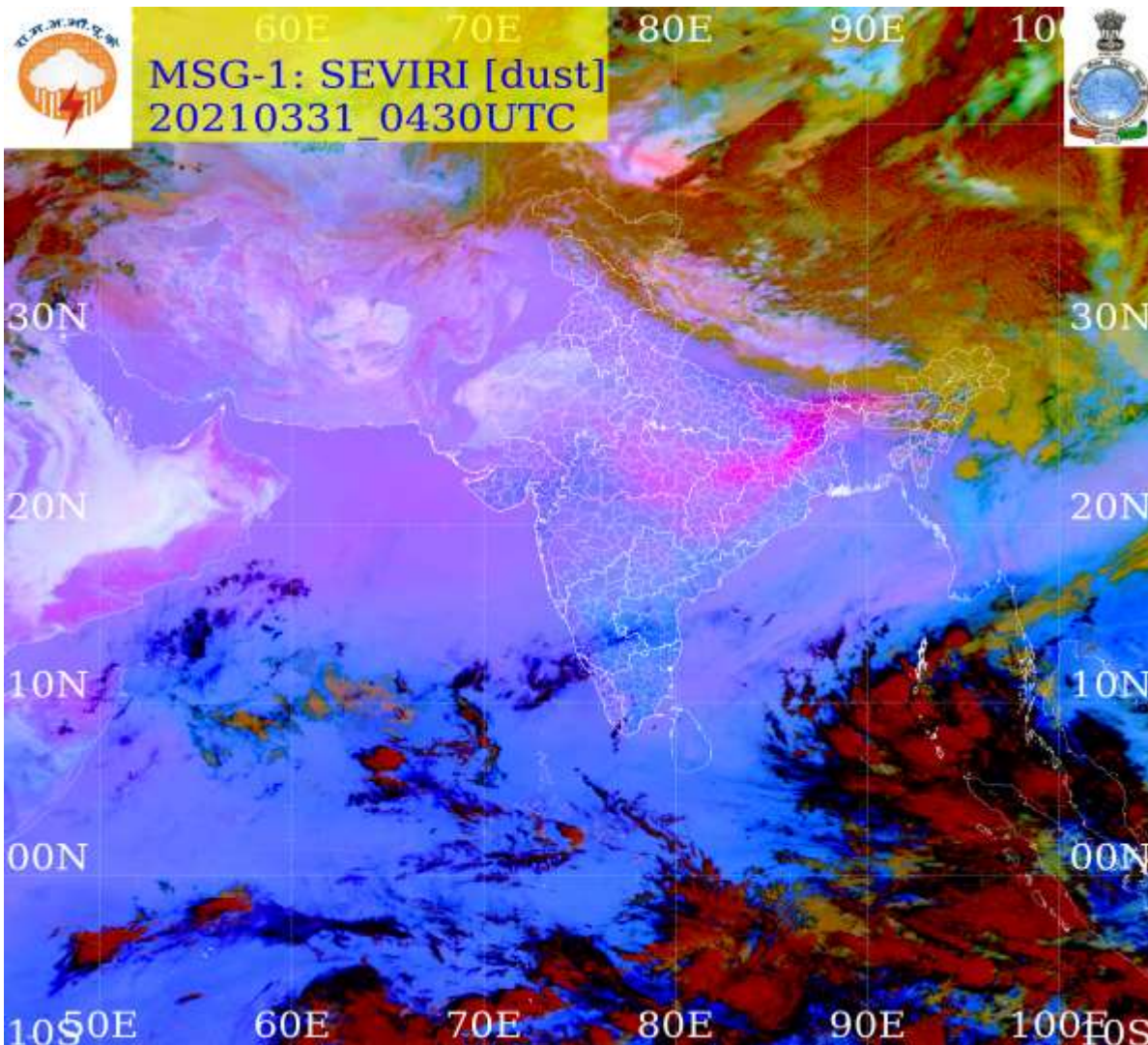
WESTERN DISTURBANCE (WD):-

SCT MULTILAYERED CLOUDS OVER N LADAKH TIBET ADJ CHINA IN ASSW **WD OVER THE AREA (.)**



DUST:-

METEOSAT-8 RGB DUST PRODUCTS AT 0600 UTC INDICATES DUST OVER E MP NE VID CHTGH W ORS JHRKND BHR N GWB SHWB ADJ W ASSAM & EXT NW BD (.)



CLOUDS DESCRIPTION WITHIN INDIA:-

NORTH:-

SCT LOW/MED CLOUDS WITH EMBDD ISOL WK TO MOD CONVTN OVER LADAKH N HP N UTRKND (.)SCT LOW/MED CLOUDS OVER J&K (.)

EAST:-

SCT LOW/MED CLOUDS WITH EMBDD WK TO MOD CONVTN OVER SKM ASSAM ARUPR MEGHA NAGA N MANI (.) SCT LOW/MED CLOUDS OVER N BHR SHWB REST NE STATES (.)

WEST:-

NO SIG CLOUDS OVER THE REGION (.)

SOUTH:-

SCT TO BKN LOW/MED CLOUDS WITH EMBDD INT TO V INT CONVTN OVER ANDAMAN & NICOBAR ILS (.) SCT LOW/MED CLOUDS OVER S SIK COTL KRNTK KER EXT N & EXT S TN LKSDP (.)

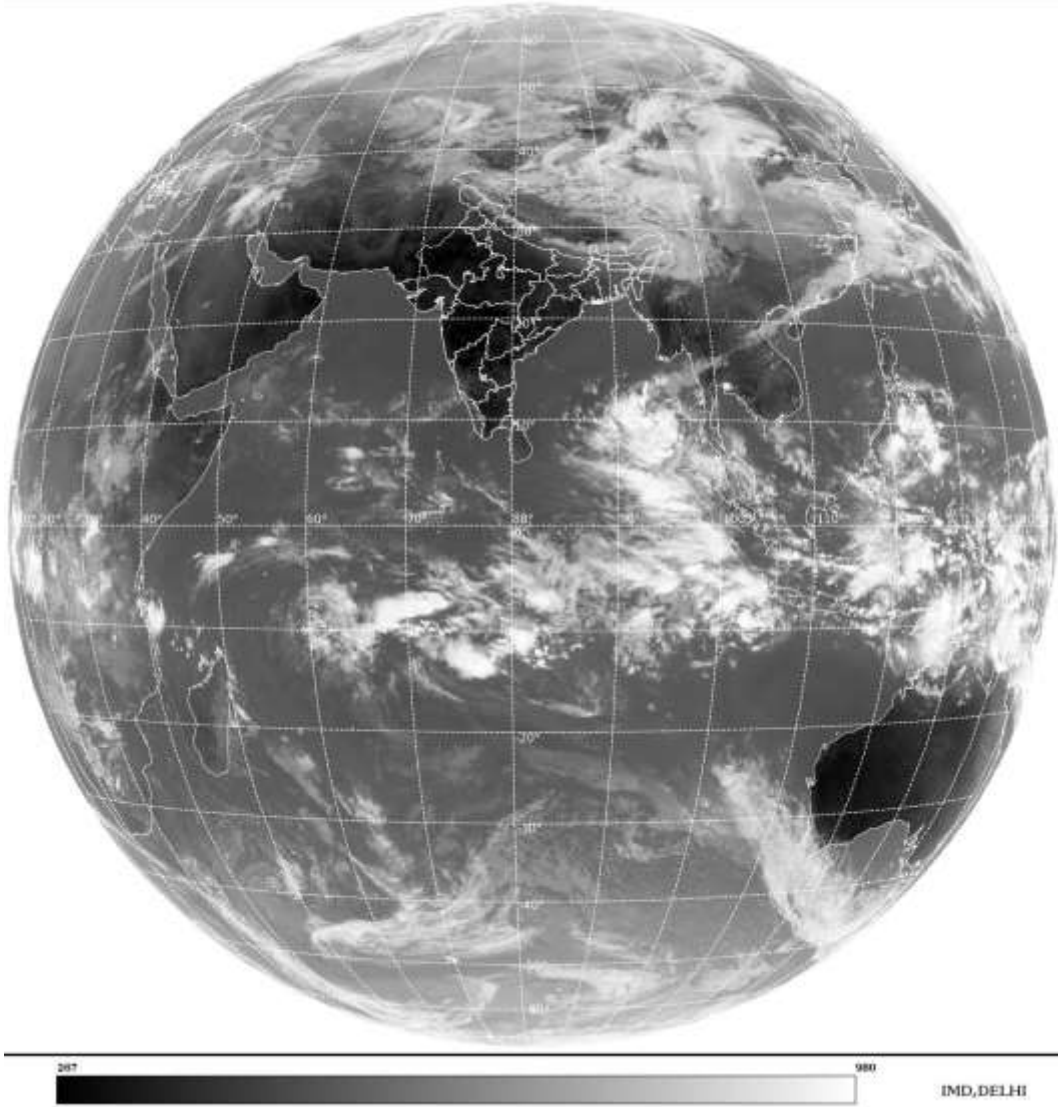
ARABIAN SEA:-

SCT LOW/MED CLOUDS WITH EMBDD MOD TO INT CONVTN OVER EXT SC ARSEA (.)

BAY OF BENGAL & ANDAMAN SEA:-

SCT TO BKN LOW/MED CLOUDS WITH EMBDD INT TO V INT CONVTN OVER SE BAY ANDAMAN SEA (.)

CLOUDS DESCRIPTION OUTSIDE INDIA:-



SCT LOW/MED CLOUDS WITH EMBDD MOD TO INT CONVTN OVER NEPAL BHUTAN TIBET CHINA N MYNMAR THAILAND SUMATRA ADJ WEST COAST STR OF MALACCA MALAY PENINSULA BORNEO S CHINA SEA JAVA ILS & SEA CELEBES ILS & SEA S PHILIPPINES SULU SEA N MOZAMBIQUE CHANNEL AND OVER INDIAN OCEAN BET EQ TO LAT 5.0N LONG 90.0E TO 100.0E AND BET EQ TO LAT 14.0S LONG 60.0E TO 110.0E (.)

TOO 31/1240EF=

NNNN

LEGEND:-

REGION	NORTH	J&K HP PJB HARY DLH UP UTRKND
	EAST	BHR JHRKND CHTGH ORS WB SKM NORTH-EAST STATES
	WEST	RAJ MP GUJ MAHA GOA
	SOUTH	TLNGN AP KRNTK KER TN LKSDP ANDAMAN & NICOBAR ILS

CLOUD DISTRIBUTION	ISOL	ISOLATED (LESS THAN 25%)
	SCT	SCATTERED (25 TO 50%)
	BKN	BROKEN (51 TO 75%)
	SLD	SOLID (GREATER THAN 75%)
CLOUDS TOP TEMPERATURE	CTT	CLOUD TOP TEMPERATURE
CONVECTION	WK CONVTN	WEAK CONVECTION (CTT GREATER THAN -25°C)
	MOD CONVTN	MODERATE CONVECTION (CTT BETWEEN -25°C TO -40°C)
	INT CONVTN	INTENSE CONVECTION (CTT BETWEEN -41°C TO -70°C)
	V INT CONVTN	VERY INTENSE CONVECTION (CTT LESS THAN -70°C)
METEOROLOGICAL SUB-DIVISIONS, STATES & UNION TERRITORIES	ARUPR	ARUNACHAL PRADESH
	BHR	BIHAR
	CHTGH	CHHATTISGARH
	COTL AP	COASTAL ANDHRA PRADESH
	COTL KRNTK	COASTAL KARNATAKA
	COTL ORS	COASTAL ORISSA
	GUJ	GUJARAT
	GWB	GANGETIC WEST BENGAL
	HARY	HARYANA
	DLH	DELHI
	HP	HIMACHAL PRADESH
	J&K	JAMMU AND KASHMIR
	JHRKND	JHARKHAND
	KER	KERALA
	KKN	KONKAN
	LKSDP	LAKSHADWEEP
	M MAHA	MADHYA MAHARASHTRA
	MAHA	MAHARASHTRA
	MANI	MANIPUR
	MEGHA	MEGHALAYA
	MIZO	MIZORAM
	MP	MADHYA PRADESH
	MRTHWD	MARATHWADA
	NAGA	NAGALAND
	N COTL AP	NORTH COASTAL ANDHRA PRADESH
	NIK	NORTH INTERIOR KARNATAKA
	ORS	ORISSA
	PJB	PUNJAB
	RAJ	RAJASTHAN
	RYLSM	RAYALASEEMA
	SAU & KUTCH	SAURASHTRA & KUTCH
	SHWB	SUB-HIMALAYAN WEST BENGAL

	SIK	SOUTH INTERIOR KARNATAKA
	SKM	SIKKIM
	TLNGN	TELANGANA
	TN	TAMIL NADU
	TRP	TRIPURA
	UP	UTTAR PRADESH
	UTRKND	UTTARAKHAND
	VID	VIDHARBHA
	SHWB	SUB HIMALAYAN WEST BENGAL
	GWB	GANGETIC WEST BENGAL
	ARSEA	ARABIAN SEA
	ILS	ISLANDS
MISCELLANEOUS	ASSW	IN ASSOCIATION WITH
	ASSTD	ASSOCIATED
	LLC	LOW LEVEL CIRCULATION
	EMBDD	EMBEDDED
	N/HOOD	NEIGHBOURHOOD
	EXT	EXTREME