

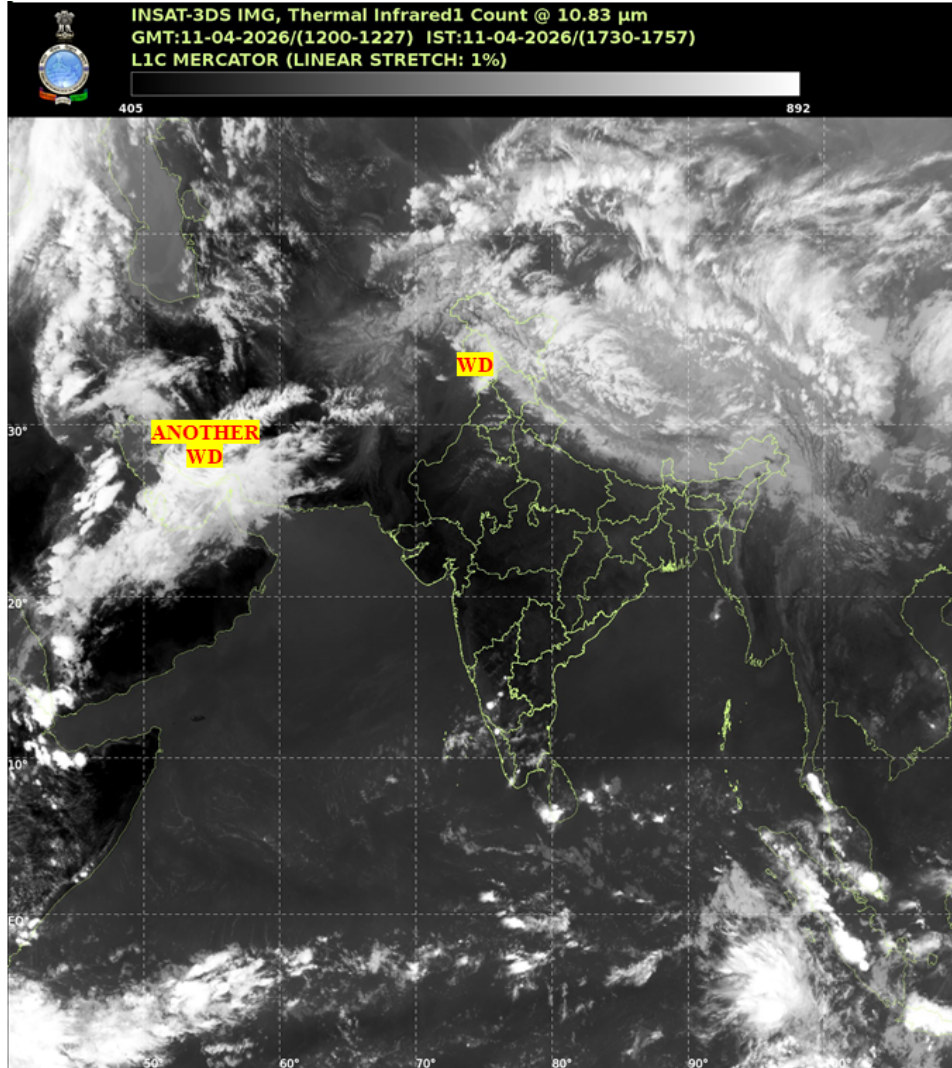


भारत मौसम विज्ञान विभाग  
पृथ्वी विज्ञान मंत्रालय  
India Meteorological Department  
Ministry of Earth Sciences



## SATELLITE BULLETIN BASED ON SATELLITE IMAGERIES AND PRODUCTS

Date: 2026-04-11 Time: 12:00:00 UTC



TCIN50 DEMS 111200

SATELLITE BULLETIN BASED ON INSAT-3DS PIC OF 111200 UTC (.)

REGION COVERED BETWEEN LAT 50.0°N TO 35.0°S AND LONG 40.0°E TO 125.0°E (.)

### SALIENT FEATURES:

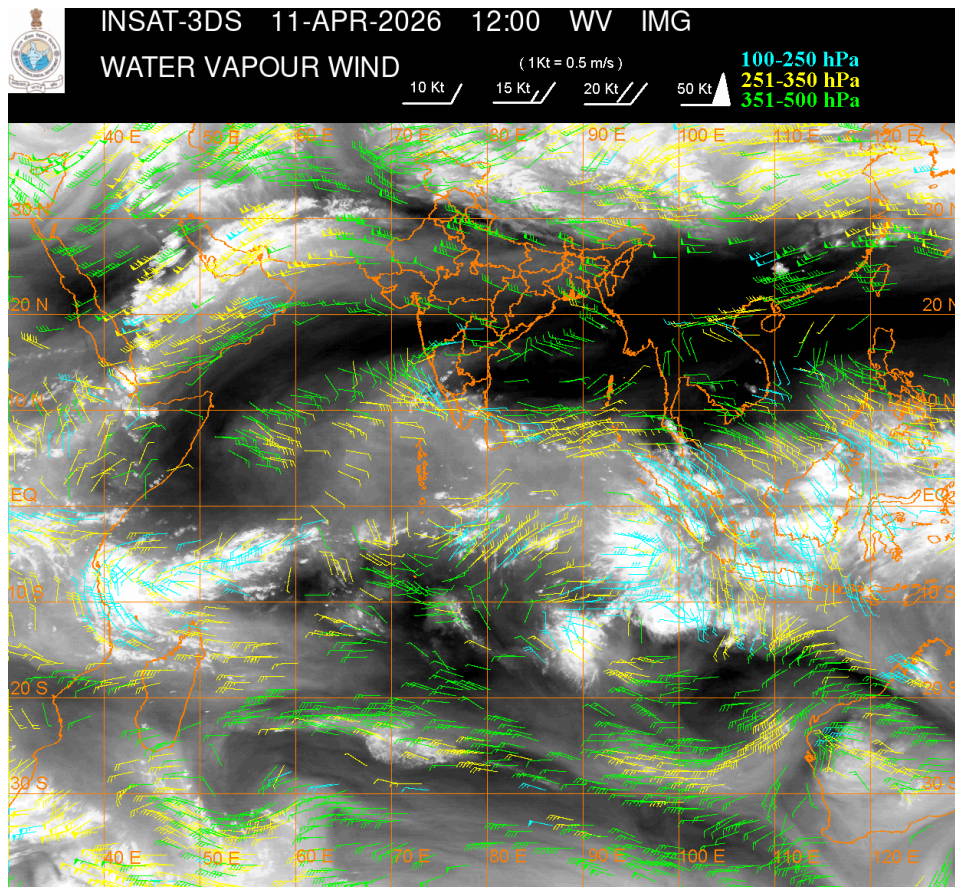
#### WESTERN DISTURBANCE (WD):-

SCT MULTILAYERED CLOUDS OVER NORTH PAK LADAKH J&K HP UTRKND PJB HARY DLH N RAJ NW UP NEPAL TIBET ADJ CHINA IN ASSW WD OVER THE AREA (.)

SCT MULTILAYERED CLOUDS OVER PERSIAN GULF IRAN AND N/HOOD IN ASSW WD OVER THE AREA (.)

## CONVECTIVE / THUNDERSTORM ACTIVITY:-

MODERATE TO INTENSE CONVECTIVE / THUNDERSTORM ACTIVITY OBSERVED OVER LADAKH J&K N HP N UTRKND SIK KER TN LKSDP ILS AREA (MINIMUM CTT MINUS 40-70 DEGREE CELSIUS) (.)



### CLOUD DESCRIPTION WITHIN INDIA:

#### NORTH:

SCT LOW/MED CLOUDS WITH EMBDD MOD TO INT CONVTN OVER LADAKH J&K N HP N UTRKND AND ISOL WK TO MOD CONVTN OVER S HP S UTRKND PJB HARY NW UP (.) SCT LOW/MED CLOUDS OVER DLH (.)

#### EAST:

SCT LOW/MED CLOUDS WITH EMBDD ISOL WK TO MOD CONVTN OVER SHWB SKM NE STATES & E BD (.) ISOL LOW/MED CLOUDS OVER ORS (.)

#### WEST:

SCT LOW/MED CLOUDS WITH EMBDD ISOL WK CONVTN OVER N RAJ (.) ISOL LOW/MED CLOUDS S RAJ MAHA GOA (.)

#### SOUTH:

SCT LOW/MED CLOUDS WITH EMBDD MOD TO INT CONVTN OVER SIK KER TN LKSDP ILS AREA (.) SCT LOW/MED CLOUDS WITH EMBDD ISOL WK TO MOD CONVTN OVER NIK RYLSM NICOBAR ILS AREA (.) SCT LOW/MED CLOUDS OVER COTL KRNTK S TLNGN ANDAMAN ILS (.)

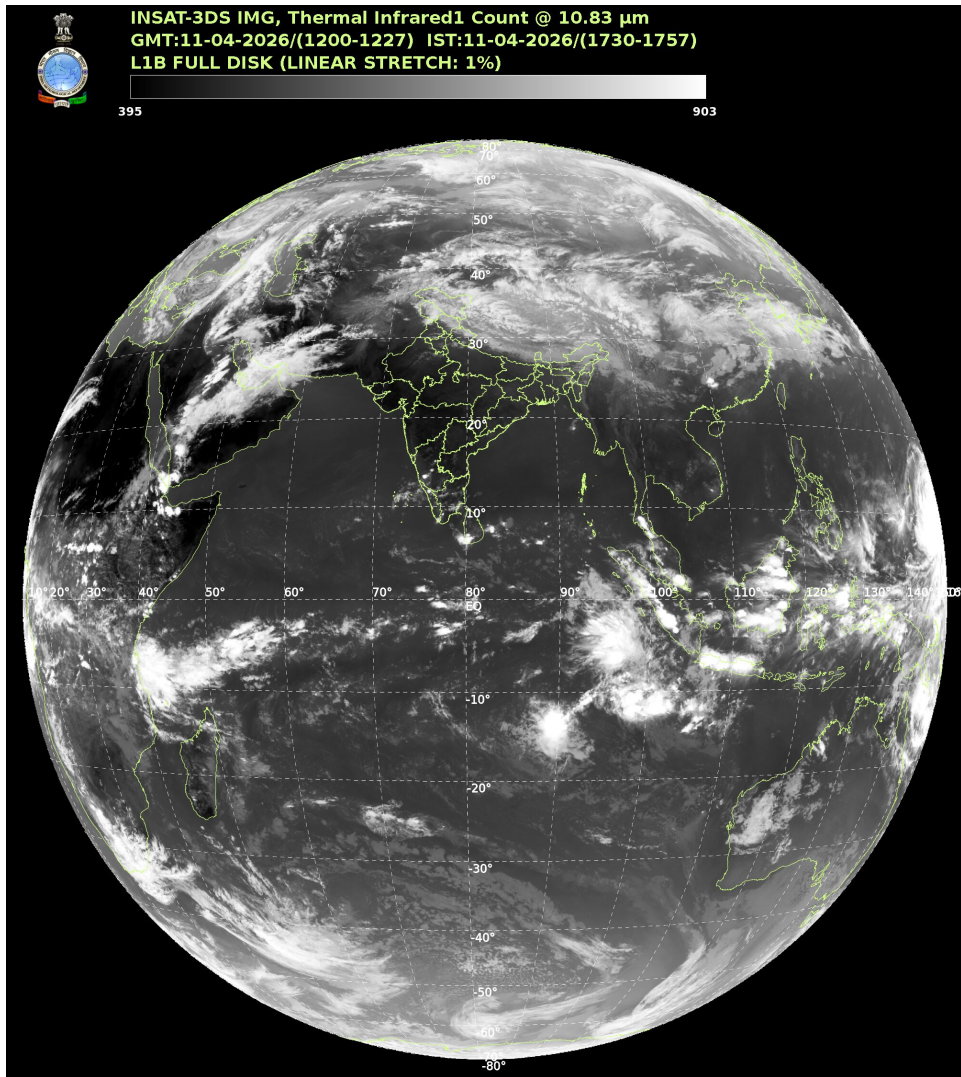
#### ARABIAN SEA:

SCT LOW/MED CLOUDS WITH EMBDD MOD TO INT CONVTN OVER EXT NW ARSEA SE ARSEA OFF KER COAST & LKSDP ILS AREA (.)

#### BAY OF BENGAL & ANDAMAN SEA:

SCT LOW/MED CLOUDS WITH EMBDD MOD TO INT CONVTN OVER NE & SOUTH BAY AND ISOL WK TO MOD CONVTN OVER SOUTH ANDAMAN SEA (.)

**CLOUD DESCRIPTION OUTSIDE INDIA:**



**SCT LOW/MED CLOUDS WITH EMBDD MOD TO INT CONVTN OVER SRI LANKA PALK STR MALDIVES AREA NORTH PAK NEPAL BHUTAN TIBET CHINA NORTH MYANMAR EXT SOUTH THAILAND SOUTH VIETNAM YELLOW SEA ADJ EAST CHINA SEA SUMATRA STR OF MALACCA MALAYSIA BORNEO SOUTH CHINA SEA JAVA ILS & SEA CELEBES ILS & SEA PHILIPPINES SULU SEA MADAGASCAR NORTH MOZAMBIQUE CHANNEL AND OVER INDIAN OCEAN BET LAT 5.0N TO 25.0S LONG 40.0E TO 115.0E (.)**

**T00 11/1830 HRS IST**

**NNNN**

**LEGEND**

| REGION             |   |
|--------------------|---|
| NORTH              | J&K HP UTRKND PJB HARY DLH UP                     |
| EAST               | BHR JHRKND CHTGH ORS WB SKM NORTH-EAST STATES     |
| WEST               | RAJ MP GUJ MAHA GOA                               |
| SOUTH              | TLNGN AP KRNTK KER TN LKSDP ANDAMAN & NICOBAR ILS |
| CLOUD DISTRIBUTION |   |

|   |   |
|---|---|
| <b>ISOL</b>   | <b>ISOLATED (LESS THAN 25%)</b>                         |
| <b>SCT</b>  | <b>SCATTERED (25 TO 50%)</b>                            |
| <b>BKN</b>  | <b>BROKEN (51 TO 75%)</b>                               |
| <b>SLD</b>  | <b>SOLID (GREATER THAN 75%)</b>                         |
| <b>CLOUDS TOP TEMPERATURE</b>                                       |   |
| <b>CTT</b>  | <b>CLOUD TOP TEMPERATURE</b>                            |
| <b>CONVECTION</b>   |   |
| <b>WK CONVTN</b>  | <b>WEAK CONVECTION (CTT GREATER THAN -25°C)</b>         |
| <b>MOD CONVTN</b>   | <b>MODERATE CONVECTION (CTT BETWEEN -25°C TO -40°C)</b> |
| <b>INT CONVTN</b>   | <b>INTENSE CONVECTION (CTT BETWEEN -41°C TO -70°C)</b>  |
| <b>V INT CONVTN</b>   | <b>VERY INTENSE CONVECTION (CTT LESS THAN -70°C)</b>    |
| <b>METEOROLOGICAL SUB-DIVISIONS, STATES &amp; UNION TERRITORIES</b> |   |
| <b>J&amp;K</b>  | <b>JAMMU AND KASHMIR</b>                                |
| <b>HP</b>   | <b>HIMACHAL PRADESH</b>                                 |
| <b>UTRKND</b>   | <b>UTTARAKHAND</b>                                      |
| <b>PJB</b>  | <b>PUNJAB</b>   |
| <b>HARY</b>   | <b>HARYANA</b>  |
| <b>DLH</b>  | <b>DELHI</b>  |
| <b>BHR</b>  | <b>BIHAR</b>  |
| <b>JHRKND</b>   | <b>JHARKHAND</b>  |
| <b>CHTGH</b>  | <b>CHHATTISGARH</b>                                     |
| <b>ORS</b>  | <b>ORISSA</b>   |
| <b>GWB</b>  | <b>GANGETIC WEST BENGAL</b>                             |
| <b>SHWB</b>   | <b>SUB-HIMALAYAN WEST BENGAL</b>                        |
| <b>SKM</b>  | <b>SIKKIM</b>   |
| <b>ARUPR</b>  | <b>ARUNACHAL PRADESH</b>                                |
| <b>ASSAM</b>  | <b>ASSAM</b>  |
| <b>MEGHA</b>  | <b>MEGHALAYA</b>  |
| <b>MANI</b>   | <b>MANIPUR</b>  |
| <b>MIZO</b>   | <b>MIZORAM</b>  |
| <b>TRP</b>  | <b>TRIPURA</b>  |
| <b>RAJ</b>  | <b>RAJASTHAN</b>  |
| <b>MP</b>   | <b>MADHYA PRADESH</b>                                   |
| <b>GUJ</b>  | <b>GUJARAT</b>  |

|                        |                                 |
|------------------------|---------------------------------|
| <b>SAU &amp; KUTCH</b> | <b>SAURASHTRA &amp; KUTCH</b>   |
| <b>MAHA</b>            | <b>MAHARASHTRA</b>              |
| <b>M MAHA</b>          | <b>MADHYA MAHARASHTRA</b>       |
| <b>MRTHWD</b>          | <b>MARATHWADA</b>               |
| <b>VID</b>             | <b>VIDARBHA</b>                 |
| <b>KKN</b>             | <b>KONKAN</b>                   |
| <b>TLNGN</b>           | <b>TELANGANA</b>                |
| <b>RYLSM</b>           | <b>RAYALSEEMA</b>               |
| <b>COTL AP</b>         | <b>COASTAL ANDHRA PRADESH</b>   |
| <b>NIK</b>             | <b>NORTH INTERIOR KARNATAKA</b> |
| <b>SIK</b>             | <b>SOUTH INTERIOR KARNATAKA</b> |
| <b>COTL KRNTK</b>      | <b>COASTAL KARNATAKA</b>        |
| <b>KER</b>             | <b>KERALA</b>                   |
| <b>TN</b>              | <b>TAMILNADU</b>                |
| <b>LKSDP</b>           | <b>LAKSHADWEEP</b>              |
| <b>ILS</b>             | <b>ISLANDS</b>                  |
| <b>ARSEA</b>           | <b>ARABIAN SEA</b>              |
| <b>MISCELLANEOUS</b>   |                                 |
| <b>ASSW</b>            | <b>IN ASSOCIATION WITH</b>      |
| <b>ASSTD</b>           | <b>ASSOCIATED</b>               |
| <b>LLC</b>             | <b>LOW LEVEL CIRCULATION</b>    |
| <b>EMBDD</b>           | <b>EMBEDDED</b>                 |
| <b>N/HOOD</b>          | <b>NEIGHBOURHOOD</b>            |
| <b>EXT</b>             | <b>EXTREME</b>                  |