



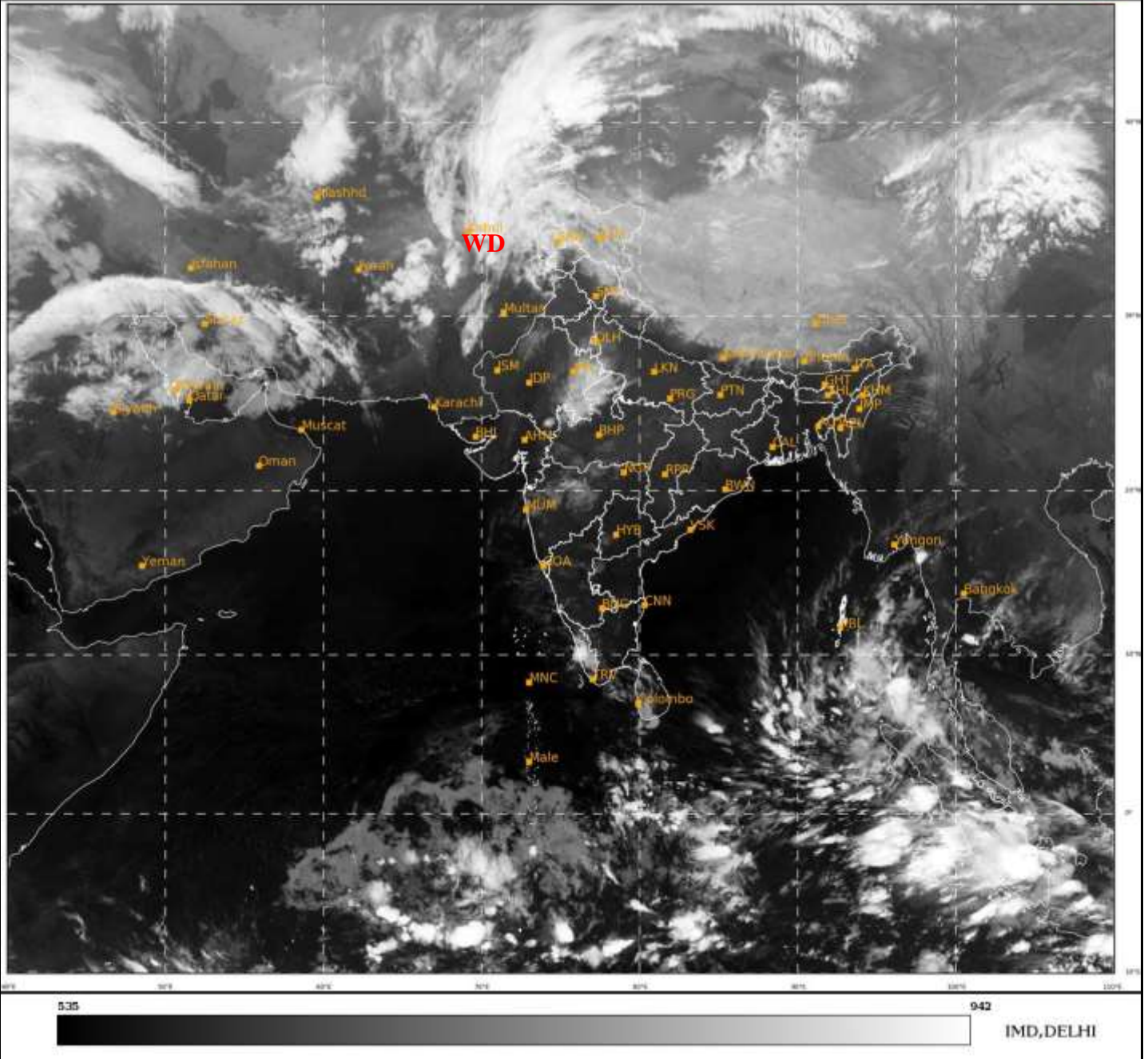
भारत मौसम विज्ञान विभाग  
पृथ्वी विज्ञान मंत्रालय  
India Meteorological Department  
Ministry of Earth Sciences



**SATELLITE BULLETIN BASED ON SATELLITE  
IMAGERIES AND PRODUCTS**  
**08.03.2022 TIME 2100 UTC**

SAT : INSAT-3D IMG  
IMG\_TIR1 10.8 um  
L1C Mercator

08-03-2022/(2100 to 2126) GMT  
09-03-2022/(0230 to 0256) IST



TCIN50 DEMS 082100

SATELLITE BULLETIN BASED ON INSAT-3D PIC OF 082100 UTC (.)

REGION COVERED BETWEEN LAT 50.0°N TO 30.0°S AND LONG 40.0°E TO 125.0°E (.)

**SALIENT FEATURES:-**

**WESTERN DISTURBANCE (WD):-**

SCT TO BKN MULTILAYERED CLOUDS OVER E IRAN AFGAN PAK J&K LADAKH AND N/HOOD  
IN ASSW **WD** OVER THE AREA (.)

**CLOUDS DESCRIPTION WITHIN INDIA:-**

**NORTH:-**

SCT LOW/MED CLOUDS WITH EMBDD MOD TO INT CONVTN OVER W LADAKH J&K AND ISOL WK TO MOD CONVTN OVER E LADAKH N HP N UTRKND (.) SCT LOW/MED CLOUDS OVER S HP S UTRKND N PJB S HARY DLH UP (.)

**EAST:-**

SCT LOW/MED CLOUDS WITH EMBDD ISOL WK CONVTN OVER SKM ARUPR (.) ISOL TO SCT LOW/MED CLOUDS OVER W BHR ASSAM MEGHA NAGA MANI (.)

**WEST:-**

SCT LOW/MED CLOUDS WITH EMBDD WK TO MOD CONVTN OVER E RAJ ADJ NW MP NORTH MADHYA MAHA (.) SCT LOW/MED CLOUDS OVER W RAJ REST MP GUJ REST MAHA & GOA (.)

**SOUTH:-**

SCT LOW/MED CLOUDS WITH EMBDD MOD TO INT CONVTN OVER S KER & NICOBAR ILS (.) SCT LOW/MED CLOUDS WITH EMBDD ISOL WK TO MOD CONVTN OVER S COTL KRNTK (.) SCT LOW/MED CLOUDS OVER TLNGN RYLSM COTL AP REST KRNTK REST TN N KER ANDAMAN ILS (.)

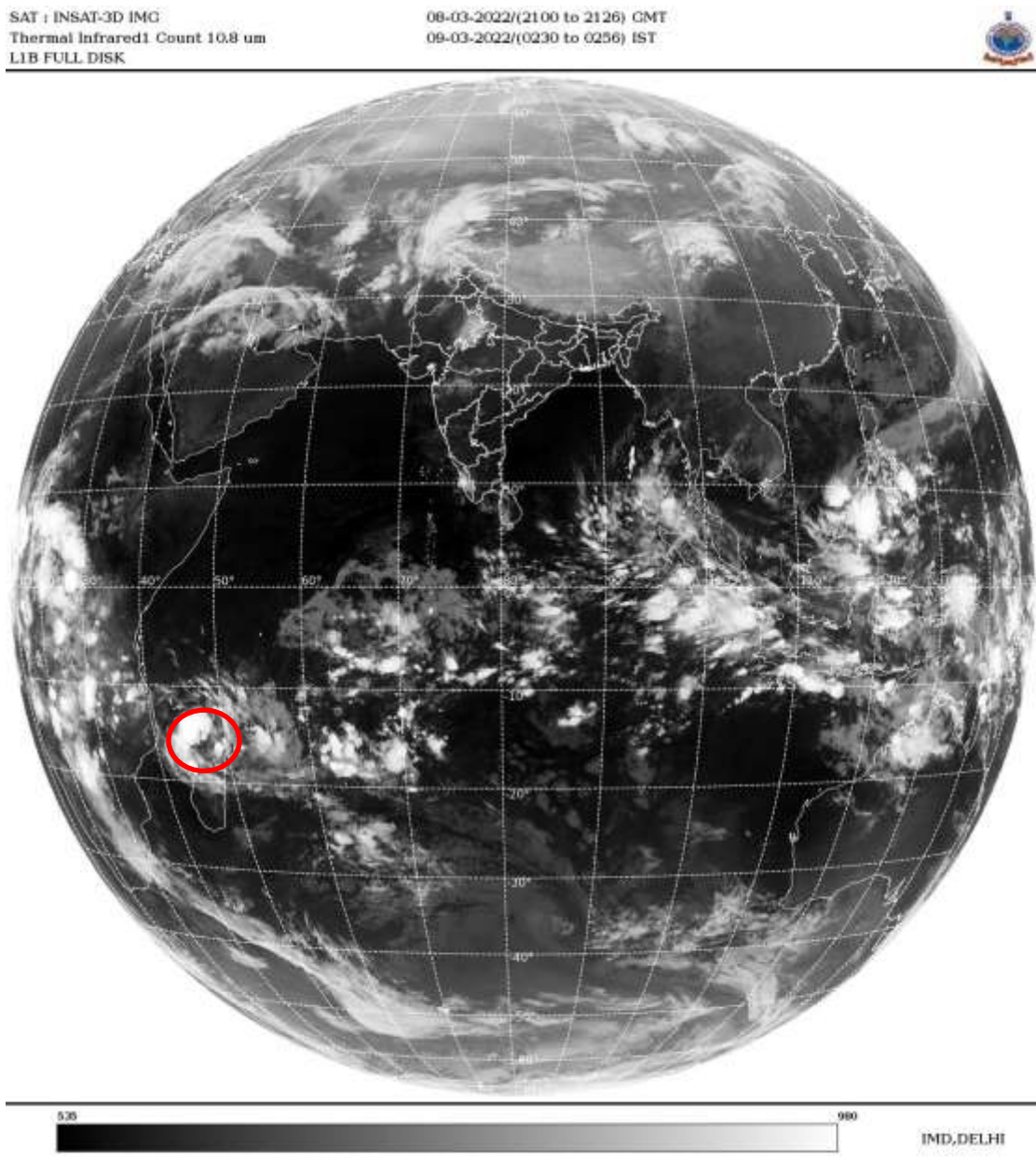
**ARABIAN SEA:-**

NO SIGNIFICANT CLOUDS OVER THE REGION (.)

**BAY OF BENGAL & ANDAMAN SEA:-**

SCT TO BKN LOW/MED CLOUDS WITH EMBDD MOD TO INT CONVTN OVER ANDAMAN SEA SE BAY ADJ EQUATORIAL INDIAN OCEAN (.)

**CLOUDS DESCRIPTION OUTSIDE INDIA:**



**VORTEX (GOMBE) OVER N MADAGASCAR AND N/HOOD:-**

VORTEX (**GOMBE**) OVER N MADAGASCAR CENTERED NEAR **15.0S / 47.3E** (.) **OVERLAND** (.) ASSTD BKN LOW/MED CLOUDS WITH EMBDD INT TO V INT CONVTN OVER NORTH MADAGASCAR ADJ N MOZAMBIQUE CHANNEL AND N/HOOD (.)

SCT LOW/MED CLOUDS WITH EMBDD MOD TO INT CONVTN OVER SRILANKA PAK TIBET CHINA S MYANMAR THAILAND GULF OF THAILAND SUMATRA STR OF MALACCA MALAYSIA BORNEO S CHINA SEA JAVA ILS & SEA CELEBES ILS & SEA PHILIPPINES SULU SEA N MADAGASCAR N MOZAMBIQUE CHANNEL AND OVER INDIAN OCEAN BET EQ TO LAT 30.0S LONG 50.0E TO 75.0E AND BET LAT 5.0N TO 12.0S EAST OF LONG 75.0E (.)

TOO 09/0425 HRS IST=

NNNN

**LEGEND:-**

REGION	NORTH	J&K HP PJB HARY DLH UP UTRKND
	EAST	BHR JHRKND CHTGH OR WB SKM NORTH- EAST STATES
	WEST	RAJ MP GUJ MAHA GOA
	SOUTH	TLNGN AP KRNTK KER TN LKSDP ANDAMAN & NICOBAR ILS

CLOUD DISTRIBUTION	ISOL	ISOLATED (LESS THAN 25%)
	SCT	SCATTERED (25 TO 50%)
	BKN	BROKEN (51 TO 75%)
	SLD	SOLID (GREATER THAN 75%)
CLOUDS TOP TEMPERATURE	CTT	CLOUD TOP TEMPERATURE
CONVECTION	WK CONVTN	WEAK CONVECTION (CTT GREATER THAN -25°C)
	MOD CONVTN	MODERATE CONVECTION (CTT BETWEEN -25°C TO -40°C)
	INT CONVTN	INTENSE CONVECTION (CTT BETWEEN -41°C TO -70°C)
	V INT CONVTN	VERY INTENSE CONVECTION (CTT LESS THAN -70°C)
METEOROLOGICAL SUB-DIVISIONS, STATES & UNION TERRITORIES	ARUPR	ARUNACHAL PRADESH
	BHR	BIHAR

	<b>CHTGH</b>	<b>CHHATTISGARH</b>
	<b>COTL AP</b>	<b>COASTAL ANDHRA PRADESH</b>
	<b>COTL KRNTK</b>	<b>COASTAL KARNATAKA</b>
	<b>COTL ORS</b>	<b>COASTAL ORISSA</b>
	<b>GUJ</b>	<b>GUJARAT</b>
	<b>GWB</b>	<b>GANGETIC WEST BENGAL</b>
	<b>HARY</b>	<b>HARYANA</b>
	<b>DLH</b>	<b>DELHI</b>
	<b>HP</b>	<b>HIMACHAL PRADESH</b>
	<b>J&amp;K</b>	<b>JAMMU AND KASHMIR</b>
	<b>JHRKND</b>	<b>JHARKHAND</b>
	<b>KER</b>	<b>KERALA</b>
	<b>KKN</b>	<b>KONKAN</b>
	<b>LKSDP</b>	<b>LAKSHADWEEP</b>
	<b>M MAHA</b>	<b>MADHYA MAHARASHTRA</b>
	<b>MAHA</b>	<b>MAHARASHTRA</b>
	<b>MANI</b>	<b>MANIPUR</b>
	<b>MEGHA</b>	<b>MEGHALAYA</b>
	<b>MIZO</b>	<b>MIZORAM</b>
	<b>MP</b>	<b>MADHYA PRADESH</b>
	<b>MRTHWD</b>	<b>MARATHWADA</b>
	<b>NAGA</b>	<b>NAGALAND</b>
	<b>N COTL AP</b>	<b>NORTH COASTAL ANDHRA PRADESH</b>
	<b>NIK</b>	<b>NORTH INTERIOR KARNATAKA</b>
	<b>ORS</b>	<b>ORISSA</b>
	<b>PJB</b>	<b>PUNJAB</b>
	<b>RAJ</b>	<b>RAJASTHAN</b>
	<b>RYLSM</b>	<b>RAYALASEEMA</b>
	<b>SAU &amp; KUTCH</b>	<b>SAURASHTRA &amp; KUTCH</b>
	<b>SHWB</b>	<b>SUB-HIMALAYAN WEST BENGAL</b>
	<b>SIK</b>	<b>SOUTH INTERIOR KARNATAKA</b>
	<b>SKM</b>	<b>SIKKIM</b>
	<b>TLNGN</b>	<b>TELANGANA</b>
	<b>TN</b>	<b>TAMIL NADU</b>
	<b>TRP</b>	<b>TRIPURA</b>
	<b>UP</b>	<b>UTTAR PRADESH</b>
	<b>UTRKND</b>	<b>UTTARAKHAND</b>
	<b>VID</b>	<b>VIDHARBHA</b>
	<b>SHWB</b>	<b>SUB HIMALAYAN WEST BENGAL</b>
	<b>GWB</b>	<b>GANGETIC WEST BENGAL</b>
	<b>ARSEA</b>	<b>ARABIAN SEA</b>
	<b>ILS</b>	<b>ISLANDS</b>
<b>MISCELLANEOUS</b>	<b>ASSW</b>	<b>IN ASSOCIATION WITH</b>
	<b>ASSTD</b>	<b>ASSOCIATED</b>
	<b>LLC</b>	<b>LOW LEVEL CIRCULATION</b>

<b>EMBDD</b>	<b>EMBEDDED</b>
<b>N/HOOD</b>	<b>NEIGHBOURHOOD</b>
<b>EXT</b>	<b>EXTREME</b>