

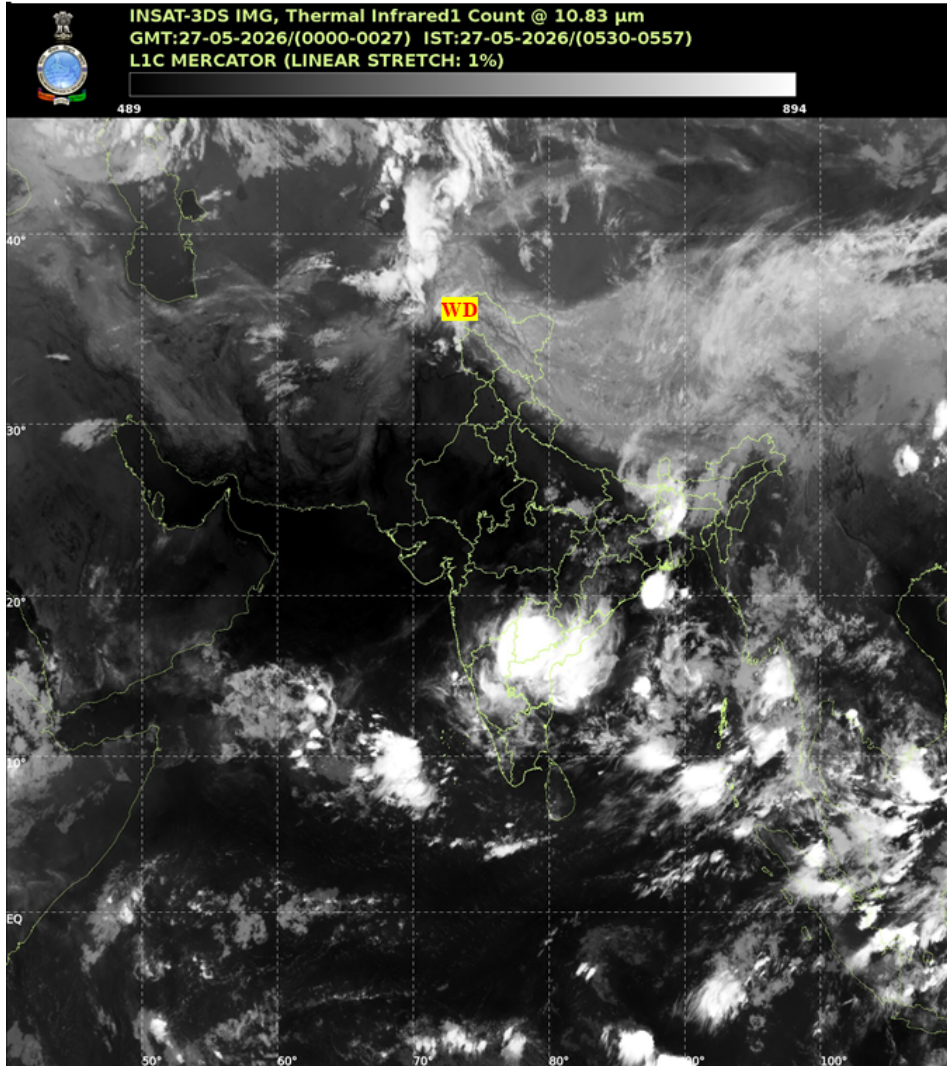


भारत मौसम विज्ञान विभाग
पृथ्वी विज्ञान मंत्रालय
India Meteorological Department
Ministry of Earth Sciences



SATELLITE BULLETIN BASED ON SATELLITE IMAGERIES AND PRODUCTS

Date: 2026-05-27 Time: 00:00:00 UTC



TCIN50 DEMS 270000

SATELLITE BULLETIN BASED ON INSAT-3DS PIC OF 270000 UTC (.)

REGION COVERED BETWEEN LAT 50.0°N TO 35.0°S AND LONG 40.0°E TO 125.0°E (.)

SALIENT FEATURES:

WESTERN DISTURBANCE (WD):-

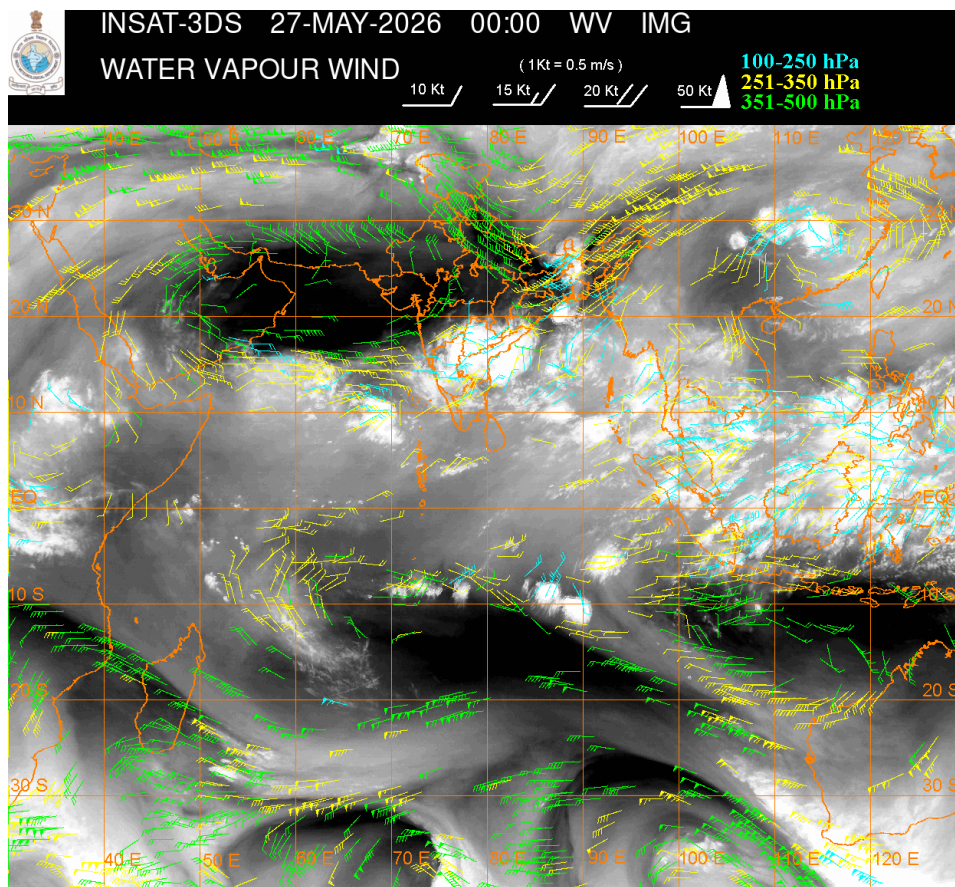
SCT MULTILAYERED CLOUDS OVER AFGAN N PAK LADAKH J&K AND N/HOOD IN ASSW ANOTHER WD OVER THE AREA (.)

CONVECTIVE / THUNDERSTORM ACTIVITY:-

INTENSE TO VERY INTENSE CONVECTIVE / THUNDERSTORM ACTIVITY OVER COTL AP TLNGN

RYLSM KRNTK N TN ANDAMAN & NICOBAR ILS AREA (MINIMUM CTT MINUS 70-90 DEGREE CELSIUS) (.)

MODERATE TO INTENSE CONVECTIVE / THUNDERSTORM ACTIVITY OVER E BHR SHWB W MEGHA GWB BD S ORS VID KER S TN (MINIMUM CTT MINUS 40-70 DEGREE CELSIUS) (.)



CLOUD DESCRIPTION WITHIN INDIA:

NORTH:

SCT LOW/MED CLOUDS WITH EMBDD ISOL WK TO MOD CONVTN OVER LADAKH J&K N HP N UTRKND S HARY (.) ISOL LOW/MED CLOUDS OVER S HP S UTRKND (.)

EAST:

SCT TO BKN LOW/MED CLOUDS WITH EMBDD MOD TO INT CONVTN OVER E BHR S ORS ADJ S CHTGH GWB SHWB W MEGHA BD (.) SCT LOW/MED CLOUDS WITH EMBDD WK TO MOD CONVTN OVER SKM NE STATES (.)

WEST:

SCT TO BKN LOW/MED CLOUDS WITH EMBDD MOD TO INT CONVTN OVER VID AND WK TO MOD CONVTN OVER E MP REST MAHA (.) ISOL TO SCT LOW/MED CLOUDS OVER REST MP GOA (.)

SOUTH:

SCT TO BKN LOW/MED CLOUDS WITH EMBDD INT TO V INT CONVTN OVER COTL AP RYLSM TLNGN KRNTK ANDAMAN & NICOBAR ILS AREA (.) SCT TO BKN LOW/MED CLOUDS WITH EMBDD MOD TO INT CONVTN OVER KER TN LKSDP ILS AREA (.)

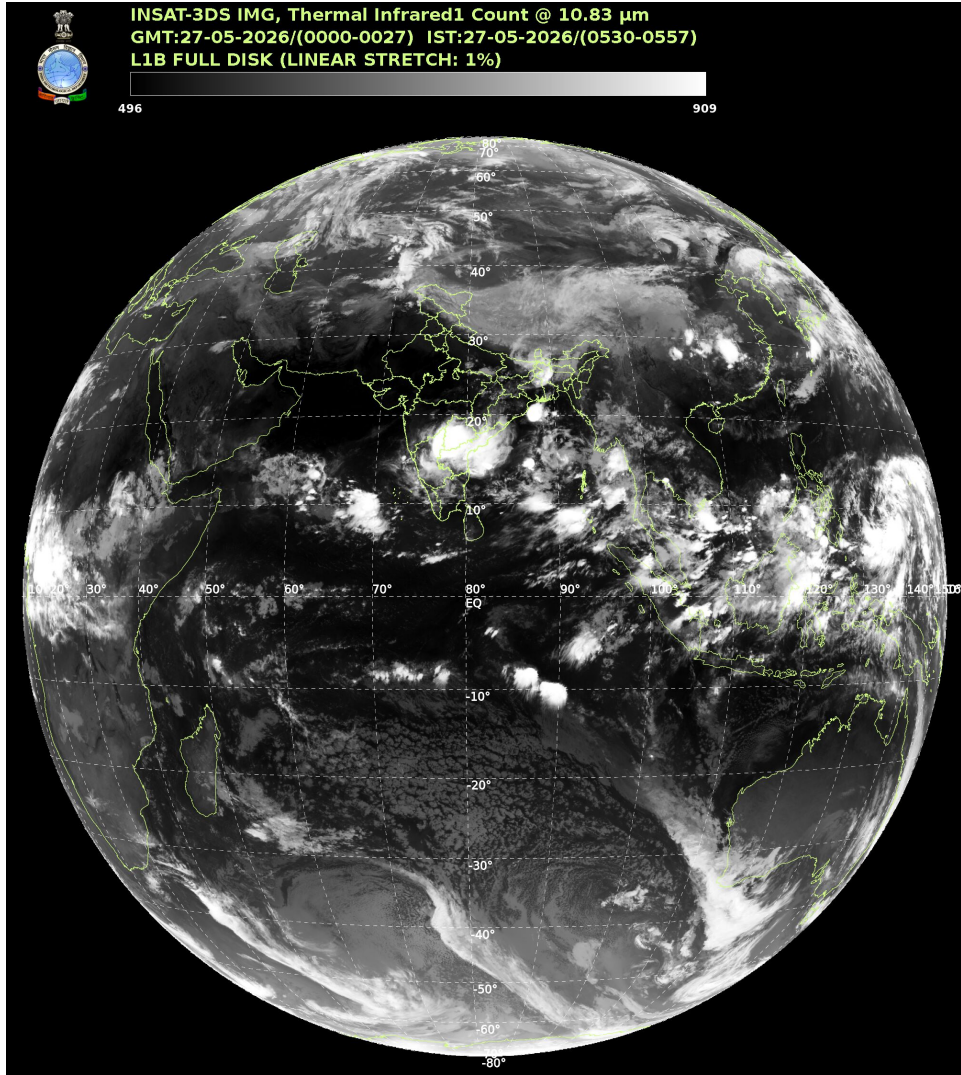
ARABIAN SEA:

SCT LOW/MED CLOUDS WITH EMBDD INT TO V INT CONVTN OVER CENTRAL & SOUTH ARSEA LKSDP ILS AREA MALDIVES AND COMORIN AREA (.)

BAY OF BENGAL & ANDAMAN SEA:

SCT LOW/MED CLOUDS WITH EMBDD INT TO V INT CONVTN OVER BAY ANDAMAN SEA (.)

CLOUD DESCRIPTION OUTSIDE INDIA:



SCT LOW/MED CLOUDS WITH EMBDD MOD TO INT CONVTN OVER SRI LANKA MALDIVES AREA TIBET CHINA YELLOW SEA ADJ EAST CHINA SEA TAIWAN MYANMAR THAILAND GULF OF THAILAND CAMBODIA LAOS VIETNAM SUMATRA STR OF MALACCA MALAYSIA BORNEO SOUTH CHINA SEA JAVA ILS & SEA CELEBES ILS & SEA PHILIPPINES SULU SEA AND OVER INDIAN OCEAN BET LAT 5.0N TO 35.0S LONG 50.0E TO 110.0E (.)

T00 27/0650 HRS IST

NNNN

LEGEND

| REGION | |
|--------------------|---|
| NORTH | J&K HP UTRKND PJB HARY DLH UP |
| EAST | BHR JHRKND CHTGH ORS WB SKM NORTH-EAST STATES |
| WEST | RAJ MP GUJ MAHA GOA |
| SOUTH | TLNGN AP KRNTK KER TN LKSDP ANDAMAN & NICOBAR ILS |
| CLOUD DISTRIBUTION | |

| | |
|---|---|
| ISOL | ISOLATED (LESS THAN 25%) |
| SCT | SCATTERED (25 TO 50%) |
| BKN | BROKEN (51 TO 75%) |
| SLD | SOLID (GREATER THAN 75%) |
| CLOUDS TOP TEMPERATURE | |
| CTT | CLOUD TOP TEMPERATURE |
| CONVECTION | |
| WK CONVTN | WEAK CONVECTION (CTT GREATER THAN -25°C) |
| MOD CONVTN | MODERATE CONVECTION (CTT BETWEEN -25°C TO -40°C) |
| INT CONVTN | INTENSE CONVECTION (CTT BETWEEN -41°C TO -70°C) |
| V INT CONVTN | VERY INTENSE CONVECTION (CTT LESS THAN -70°C) |
| METEOROLOGICAL SUB-DIVISIONS, STATES & UNION TERRITORIES | |
| J&K | JAMMU AND KASHMIR |
| HP | HIMACHAL PRADESH |
| UTRKND | UTTARAKHAND |
| PJB | PUNJAB |
| HARY | HARYANA |
| DLH | DELHI |
| BHR | BIHAR |
| JHRKND | JHARKHAND |
| CHTGH | CHHATTISGARH |
| ORS | ORISSA |
| GWB | GANGETIC WEST BENGAL |
| SHWB | SUB-HIMALAYAN WEST BENGAL |
| SKM | SIKKIM |
| ARUPR | ARUNACHAL PRADESH |
| ASSAM | ASSAM |
| MEGHA | MEGHALAYA |
| MANI | MANIPUR |
| MIZO | MIZORAM |
| TRP | TRIPURA |
| RAJ | RAJASTHAN |
| MP | MADHYA PRADESH |
| GUJ | GUJARAT |

| | |
|------------------------|---------------------------------|
| SAU & KUTCH | SAURASHTRA & KUTCH |
| MAHA | MAHARASHTRA |
| M MAHA | MADHYA MAHARASHTRA |
| MRTHWD | MARATHWADA |
| VID | VIDARBHA |
| KKN | KONKAN |
| TLNGN | TELANGANA |
| RYLSM | RAYALSEEMA |
| COTL AP | COASTAL ANDHRA PRADESH |
| NIK | NORTH INTERIOR KARNATAKA |
| SIK | SOUTH INTERIOR KARNATAKA |
| COTL KRNTK | COASTAL KARNATAKA |
| KER | KERALA |
| TN | TAMILNADU |
| LKSDP | LAKSHADWEEP |
| ILS | ISLANDS |
| ARSEA | ARABIAN SEA |
| MISCELLANEOUS | |
| ASSW | IN ASSOCIATION WITH |
| ASSTD | ASSOCIATED |
| LLC | LOW LEVEL CIRCULATION |
| EMBDD | EMBEDDED |
| N/HOOD | NEIGHBOURHOOD |
| EXT | EXTREME |