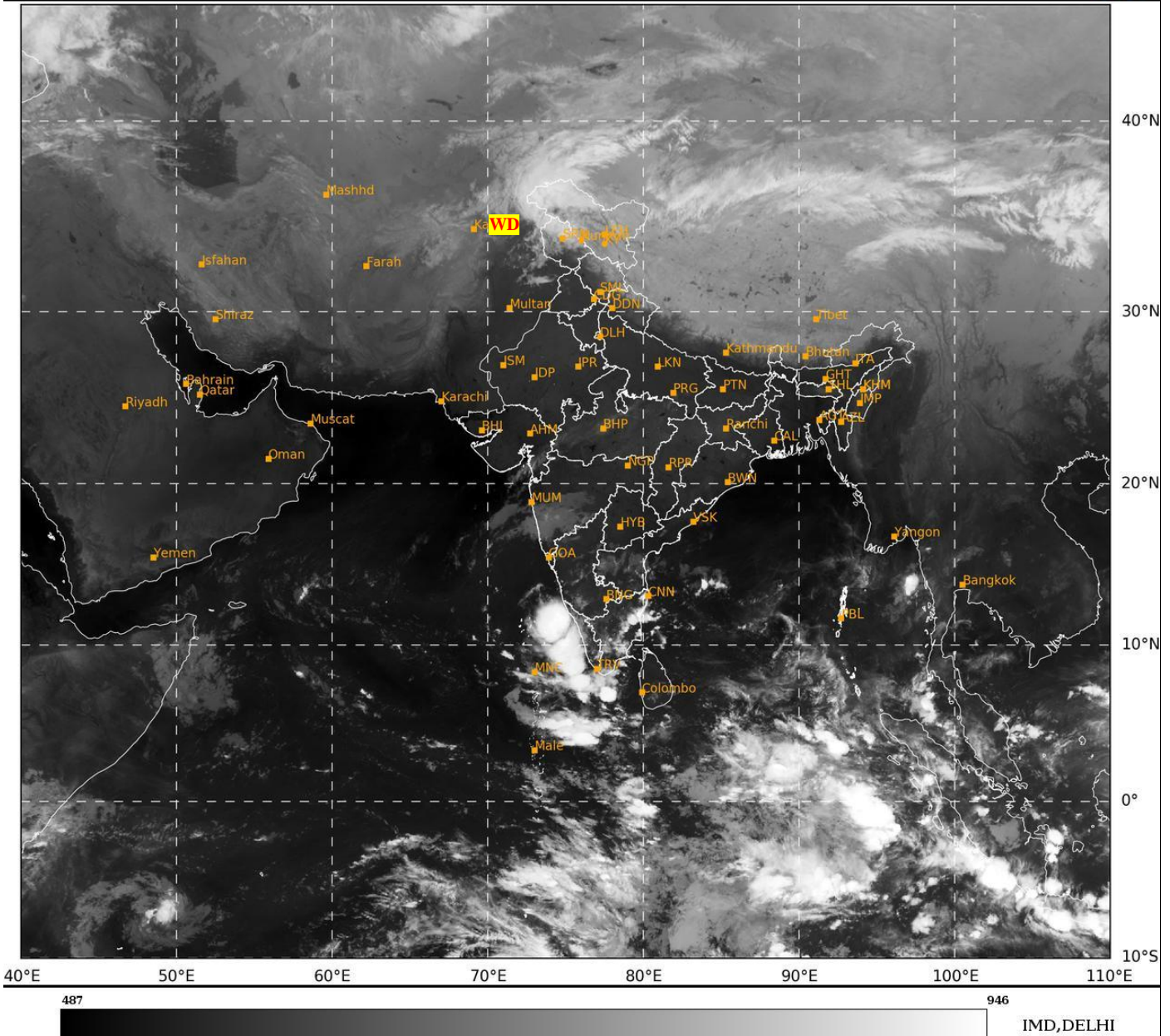




**SATELLITE BULLETIN BASED ON SATELLITE  
IMAGERIES AND PRODUCTS**  
**15.11.2024 TIME 2100 UTC**

SAT : INSAT-3DR IMG  
IMG\_TIR1 10.8 um  
LIC Mercator

15-11-2024/(2015 to 2042) GMT  
16-11-2024/(0145 to 0212) IST



TCIN50 DEMS 152100

SATELLITE BULLETIN BASED ON INSAT-3DR PIC OF 152015 UTC (.)

REGION COVERED BETWEEN LAT 50.0°N TO 35.0°S AND LONG 40.0°E TO 125.0°E (.)

**SALIENT FEATURES:-**

**WESTERN DISTURBANCE:-**

SCT MULTILAYERED CLOUDS OVER E AFGAN N PAK LADAKH J&K N HP N UTRKND TIBET  
ADJ CHINA IN ASSW **WD** OVER THE AREA (.)

**CONVECTIVE / THUNDERSTORM ACTIVITY:-**

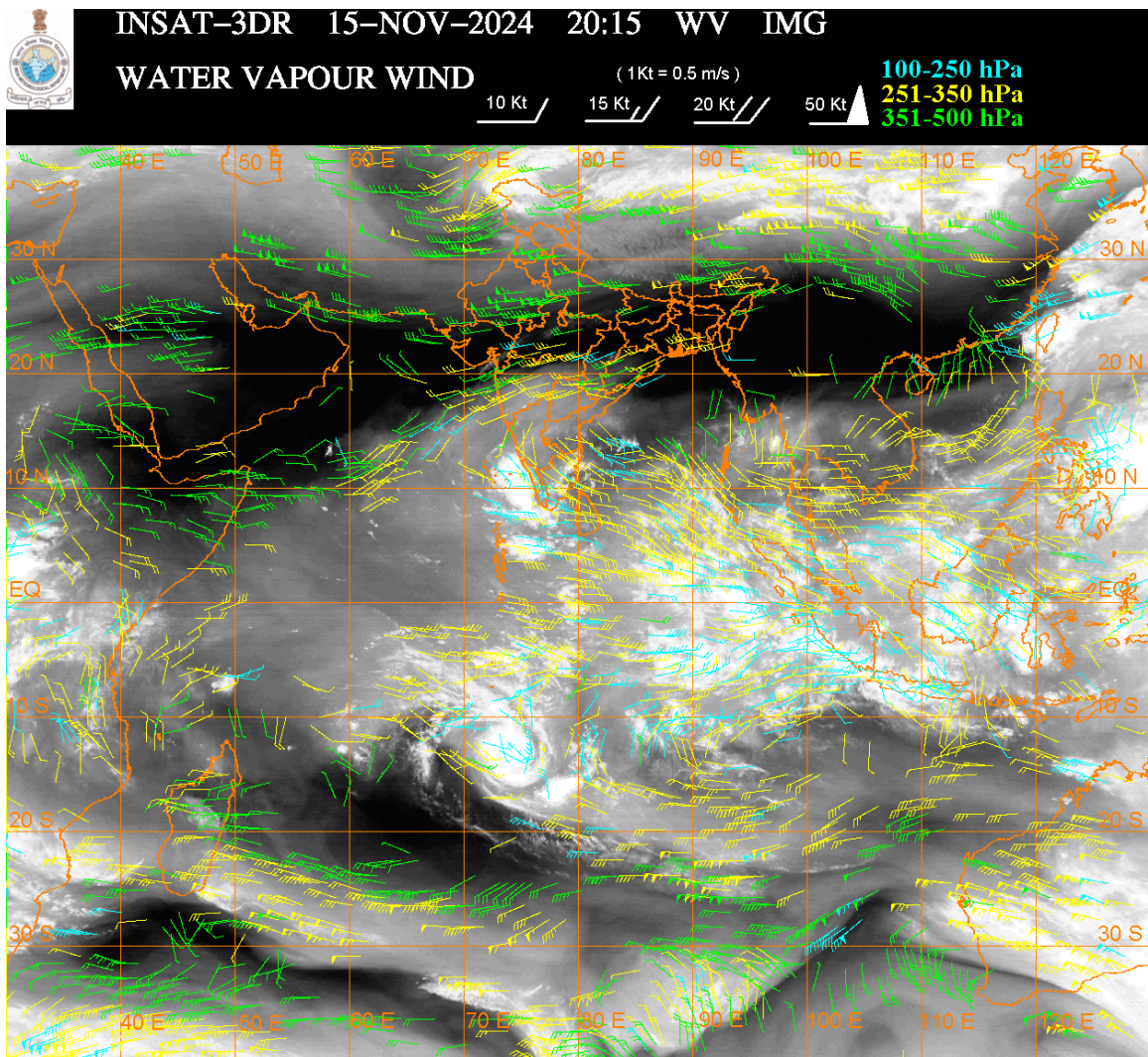
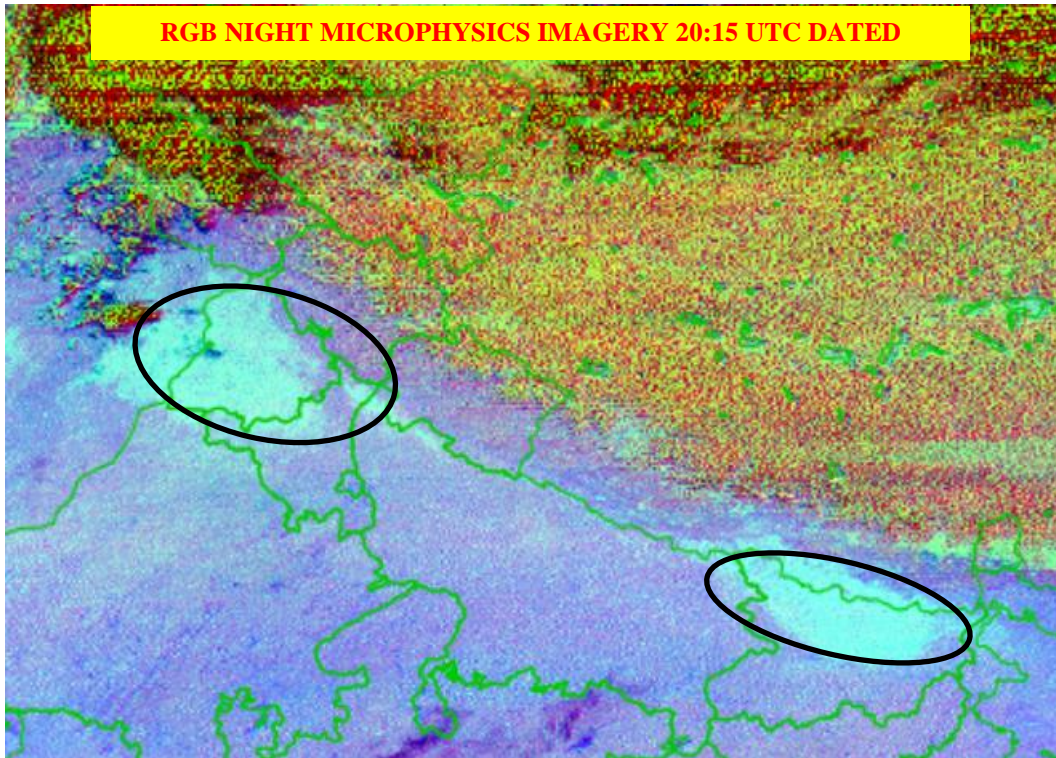
MODERATE TO INTENSE CONVECTIVE / THUNDERSTORM ACTIVITY OBSERVED OVER NW  
LADAKH S KER TN (MINIMUM CTT **MINUS 50-70 DEG CEL**) (.)

**FOG / LOW CLOUDS :-**

RGB COMPOSITE NIGHT MICROPHYSICS IMAGERY OF INSAT 3DR (RAPID) AT 20:15 UTC  
INDICATES SCT FOG / LOW CLOUDS OVER PJB ADJ W HARY EXT N UP N BHR ADJ NEPAL (.)

**JET STREAM:-**

**JET STREAM OBSERVED OVER NORTH AND CENTRAL INDIA NORTH OF LAT 20.0N (.)**



**CLOUDS DESCRIPTION WITHIN INDIA:-**

**NORTH:-**

**SCT LOW/MED CLOUDS WITH EMBDD MOD TO INT CONVTN OVER NW LADAKH AND ISOL WK TO MOD CONVTN OVER REST LADAKH N J&K N HP N UTRKND (.) ISOL TO SCT LOW/MED CLOUDS OVER S J&K S HP S UTRKND (.)**

**EAST:-**

**SCT LOW/MED CLOUDS WITH EMBDD ISOL WK CONVTN OVER SKM ARUPR (.) ISOL TO SCT LOW/MED CLOUDS OVER JHRKND CHTGH ORS SHWB REST NE STATES (.)**

**WEST:-**

SCT LOW/MED CLOUDS WITH EMBDD WK CONVTN OVER SOUTH MADHYA MAHA S KKN GOA (.) SCT LOW/MED CLOUDS OVER MP REST MAHA (.)

**SOUTH:-**

SCT LOW/MED CLOUDS WITH EMBDD MOD TO INT CONVTN OVER S KER TN LKSDP ILS AREA AND ISOL WK TO MOD CONVTN OVER KRNTK RYLSM S COTL AP ANDAMAN NICOBAR ILS (.) SCT LOW/MED CLOUDS OVER TLNGN N COTL AP (.)

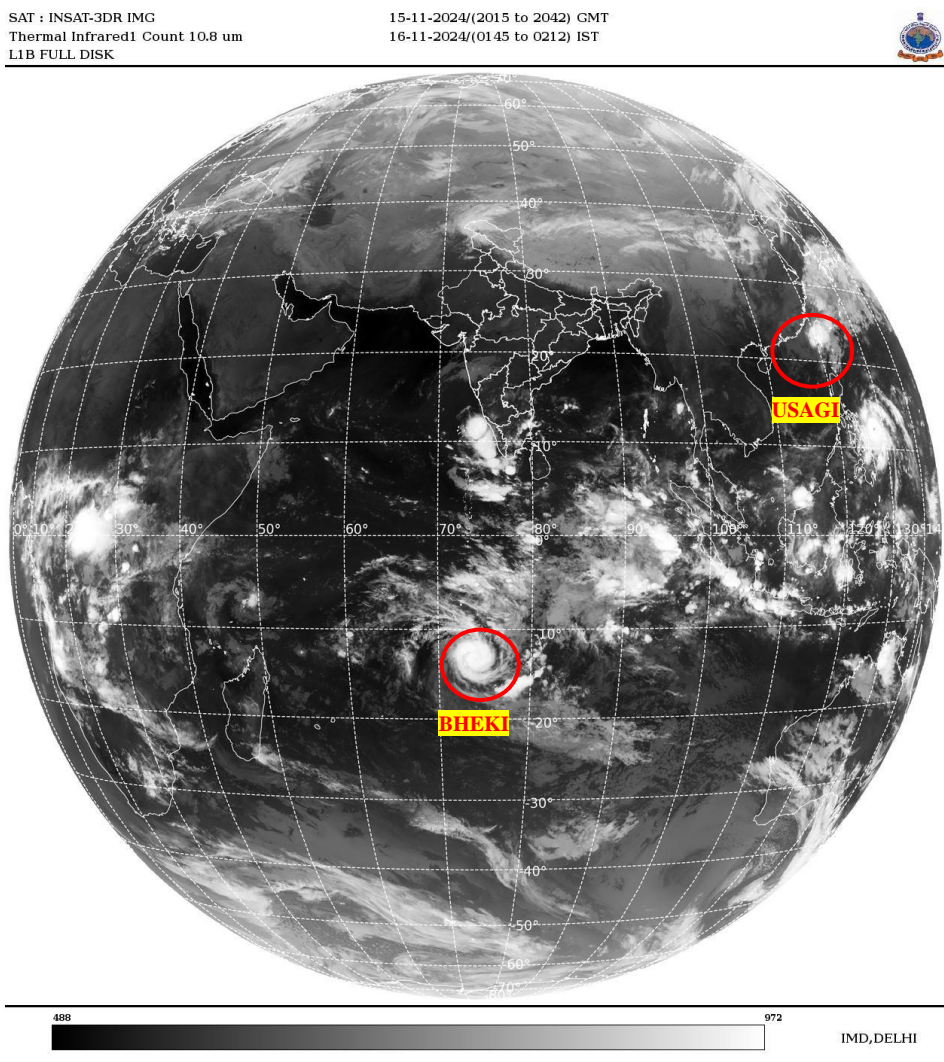
**ARABIAN SEA:-**

SCT TO BKN LOW/MED CLOUDS WITH EMBDD INT TO V INT CONVTN OVER SE ARSEA ADJ KER COAST (.) SCT LOW/MED CLOUDS WITH EMBDD MOD TO INT CONVTN OVER LKSDP ILS AREA MALDIVES & COMORIN AREA (.)

**BAY OF BENGAL & ANDAMAN SEA:-**

SCT LOW/MED CLOUDS WITH EMBDD MOD TO INT CONVTN OVER WC BAY SOUTH BAY ANDAMAN SEA & TENASSERIM COAST (.)

**CLOUDS DESCRIPTION OUTSIDE INDIA:-**



**VORTEX (USAGI) OVER EAST CHINA SEA ADJ TAIWAN:-**

VORTEX (USAGI) OVER EAST CHINA SEA ADJ TAIWAN CENTERED NEAR **22.4N / 119.0E** (.) INTENSITY **T2.0/3.0** (.) MAXIMUM SUSTAINED WINDS **34-47 KTS** (.) ASSTD SCT TO BKN LOW/MED CLOUDS WITH EMBDD MOD TO INT CONVTN OVER AREA BET LAT 20.0N TO 27.0N LONG 118.0E TO 125.0E & TAIWAN (.)

**VORTEX (BHEKI) OVER SOUTH INDIAN OCEAN:-**

VORTEX (BHEKI) OVER SOUTH INDIAN OCEAN (**AREA E80 ADJ E65**) CENTERED NEAR **12.8 S / 74.3E** (.) INTENSITY **T4.0/4.0** (.) MAXIMUM SUSTAINED WINDS **64-89 KTS** (.) ASSTD BKN LOW/MED CLOUDS WITH EMBDD INT TO V INT CONVTN OVER AREA BET LAT 4.0S TO 17.0S LONG 70.0E TO 80.0E (.)

SCT LOW/MED CLOUDS WITH EMBDD MOD TO INT CONVTN OVER SRI LANKA PALK STR GULF OF MANNAR MALDIVES N PAK NORTH TIBET CHINA YELLOW SEA EAST CHINA SEA

TAIWAN S THAILAND GULF OF THAILAND CAMBODIA S VIETNAM SUMATRA STR OF MALACCA MALAYSIA BORNEO SOUTH CHINA SEA JAVA ILS & SEA CELEBES ILS & SEA PHILIPPINES SULU SEA MADAGASCAR AND OVER INDIAN OCEAN BET LAT 5.0N TO 25.0S LONG 45.0E TO 120.0E (.)

TOO 16/0235 HRS IST=

NNNN

**LEGEND:-**

<b>REGION</b>	<b>NORTH</b>	<b>J&amp;K HP PJB HARY DLH UP UTRKND</b>
	<b>EAST</b>	<b>BHR JHRKND CHTGH ORS WB SKM NORTH- EAST STATES</b>
	<b>WEST</b>	<b>RAJ MP GUJ MAHA GOA</b>
	<b>SOUTH</b>	<b>TLNGN AP KRNTK KER TN LKSDP ANDAMAN &amp; NICOBAR ILS</b>
<b>CLOUD DISTRIBUTION</b>	<b>ISOL</b>	<b>ISOLATED (LESS THAN 25%)</b>
	<b>SCT</b>	<b>SCATTERED (25 TO 50%)</b>
	<b>BKN</b>	<b>BROKEN (51 TO 75%)</b>
	<b>SLD</b>	<b>SOLID (GREATER THAN 75%)</b>
<b>CLOUDS TOP TEMPERATURE</b>	<b>CTT</b>	<b>CLOUD TOP TEMPERATURE</b>
<b>CONVECTION</b>	<b>WK CONVTN</b>	<b>WEAK CONVECTION (CTT GREATER THAN -25°C)</b>
	<b>MOD CONVTN</b>	<b>MODERATE CONVECTION (CTT BETWEEN -25°C TO -40°C)</b>
	<b>INT CONVTN</b>	<b>INTENSE CONVECTION (CTT BETWEEN -41°C TO -70°C)</b>
	<b>V INT CONVTN</b>	<b>VERY INTENSE CONVECTION (CTT LESS THAN -70°C)</b>
<b>METEOROLOGICAL SUB- DIVISIONS, STATES &amp; UNION TERRITORIES</b>	<b>ARUPR</b>	<b>ARUNACHAL PRADESH</b>
	<b>BHR</b>	<b>BIHAR</b>
	<b>CHTGH</b>	<b>CHHATTISGARH</b>
	<b>COTL AP</b>	<b>COASTAL ANDHRA PRADESH</b>
	<b>COTL KRNTK</b>	<b>COASTAL KARNATAKA</b>
	<b>COTL ORS</b>	<b>COASTAL ORISSA</b>
	<b>GUJ</b>	<b>GUJARAT</b>
	<b>GWB</b>	<b>GANGETIC WEST BENGAL</b>
	<b>HARY</b>	<b>HARYANA</b>
	<b>DLH</b>	<b>DELHI</b>
	<b>HP</b>	<b>HIMACHAL PRADESH</b>
	<b>J&amp;K</b>	<b>JAMMU AND KASHMIR</b>
	<b>JHRKND</b>	<b>JHARKHAND</b>
	<b>KER</b>	<b>KERALA</b>
	<b>KKN</b>	<b>KONKAN</b>
	<b>LKSDP</b>	<b>LAKSHADWEEP</b>
	<b>M MAHA</b>	<b>MADHYA MAHARASHTRA</b>
<b>MAHA</b>	<b>MAHARASHTRA</b>	
<b>MANI</b>	<b>MANIPUR</b>	

	<b>MEGHA</b>	<b>MEGHALAYA</b>
	<b>MIZO</b>	<b>MIZORAM</b>
	<b>MP</b>	<b>MADHYA PRADESH</b>
	<b>MRTHWD</b>	<b>MARATHWADA</b>
	<b>NAGA</b>	<b>NAGALAND</b>
	<b>N COTL AP</b>	<b>NORTH COASTAL ANDHRA PRADESH</b>
	<b>NIK</b>	<b>NORTH INTERIOR KARNATAKA</b>
	<b>ORS</b>	<b>ORISSA</b>
	<b>PJB</b>	<b>PUNJAB</b>
	<b>RAJ</b>	<b>RAJASTHAN</b>
	<b>RYLSM</b>	<b>RAYALASEEMA</b>
	<b>SAU &amp; KUTCH</b>	<b>SAURASHTRA &amp; KUTCH</b>
	<b>SHWB</b>	<b>SUB-HIMALAYAN WEST BENGAL</b>
	<b>SIK</b>	<b>SOUTH INTERIOR KARNATAKA</b>
	<b>SKM</b>	<b>SIKKIM</b>
	<b>TLNGN</b>	<b>TELANGANA</b>
	<b>TN</b>	<b>TAMIL NADU</b>
	<b>TRP</b>	<b>TRIPURA</b>
	<b>UP</b>	<b>UTTAR PRADESH</b>
	<b>UTRKND</b>	<b>UTTARAKHAND</b>
	<b>VID</b>	<b>VIDHARBHA</b>
	<b>SHWB</b>	<b>SUB HIMALAYAN WEST BENGAL</b>
	<b>GWB</b>	<b>GANGETIC WEST BENGAL</b>
	<b>ARSEA</b>	<b>ARABIAN SEA</b>
	<b>ILS</b>	<b>ISLANDS</b>
<b>MISCELLANEOUS</b>	<b>ASSW</b>	<b>IN ASSOCIATION WITH</b>
	<b>ASSTD</b>	<b>ASSOCIATED</b>
	<b>LLC</b>	<b>LOW LEVEL CIRCULATION</b>
	<b>EMBDD</b>	<b>EMBEDDED</b>
	<b>N/HOOD</b>	<b>NEIGHBOURHOOD</b>
	<b>EXT</b>	<b>EXTREME</b>