



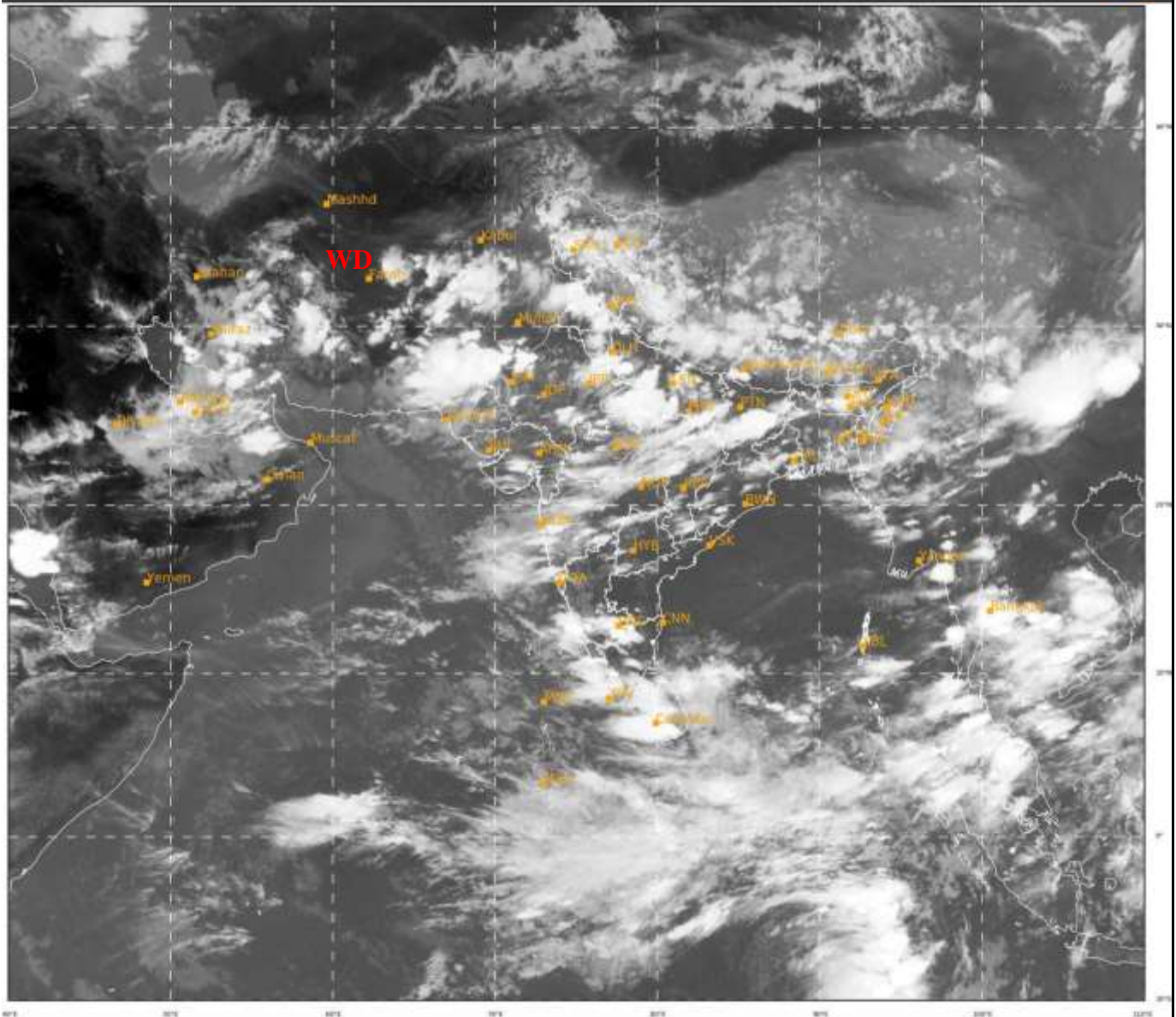
भारत मौसम विज्ञान विभाग
पृथ्वी विज्ञान मंत्रालय
India Meteorological Department
Ministry of Earth Sciences



**SATELLITE BULLETIN BASED ON SATELLITE
IMAGERIES AND PRODUCTS**
27.07.2022 TIME 1200 UTC

SAT : INSAT-3D IMG
IMG_TIR1 10.8 um
LIC Mercator

27-07-2022/(1200 to 1226) GMT
27-07-2022/(1730 to 1756) IST



312

944

IMD, DELHI

TCIN50 DEMS 271200

SATELLITE BULLETIN BASED ON INSAT-3D PIC OF 271200 UTC (.)

REGION COVERED BETWEEN LAT 50.0°N TO 30.0°S AND LONG 40.0°E TO 125.0°E (.)

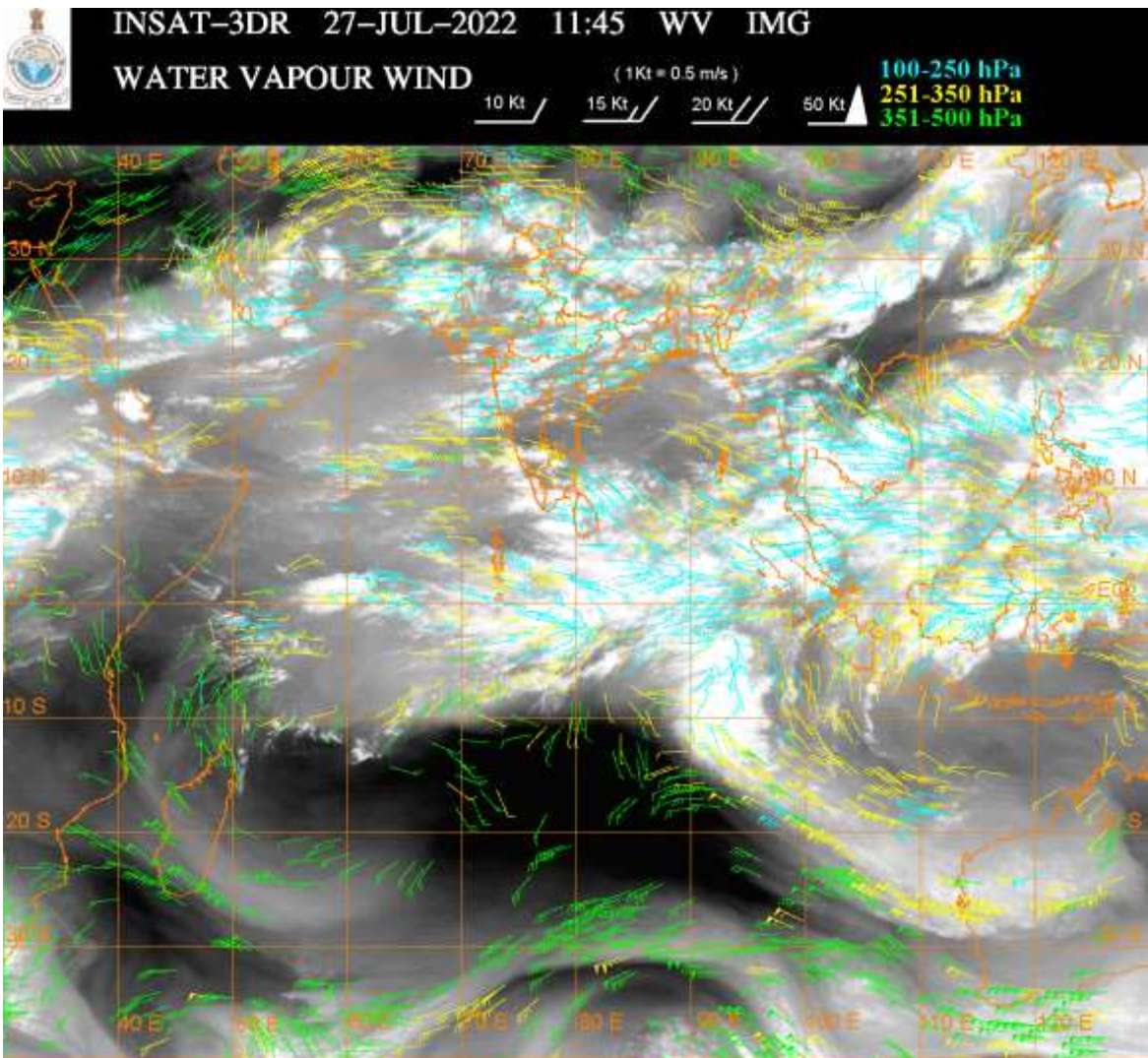
SALIENT FEATURES:-

WESTERN DISTURBANCE:-

SCT MULTILATERED CLOUDS OVER E IRAN ADJ AFGAN & N/HOOD IN ASSW WD OVER THE AREA (.)

CONVECTIVE ACTIVITIES :-

CONVECTIVE ACTIVITIES OBSERVED OVER J&K LADAKH HP PJB UTRKND UP BHR JHRKND N CHTGH ORS GWB SHWB SKM NE STATES MP RAJ S GUJ MAHA S SIK TN KER (.)



CLOUDS DESCRIPTION WITHIN INDIA:-

NORTH:-

SCT LOW/MED CLOUDS WITH EMBDD INT TO V INT CONVTN OVER N J&K N PJB S & NE UP (MINIMUM CTT MINUS 93 DEG C) (.) SCT TO BKN LOW/MED CLOUDS WITH EMBDD MOD TO INT CONVTN OVER REST J&K LADAKH HP UTRKND REST PJB E & C HARY REST UP (.) SCT LOW/MED CLOUDS WITH EMBDD ISOL WK TO MOD CONVTN OVER S PJB (.) SCT LOW/MED CLOUDS OVER REST HARY (.)

EAST:-

SCT LOW/MED CLOUDS WITH EMBDD INT TO V INT CONVTN OVER S BHR ADJ NW JHRKND (MINIMUM CTT MINUS 93 DEG C) NW CHTGH (MINIMUM CTT MINUS 72 DEG C) C ASSAM (MINIMUM CTT MINUS 84 DEG C) (.) SCT LOW/MED CLOUDS WITH EMBDD MOD TO INT CONVTN OVER NW BHR S JHRKND REST CHTGH ORS GWB S SHWB W ASSAM NE ARUPR MEGHA MANI S MIZO AND ISOL WK TO MOD CONVTN OVER SKM REST NE STATES (.) SCT LOW/MED CLOUDS OVER REST BHR REST SHWB (.)

WEST:-

SCT LOW/MED CLOUDS WITH EMBDD INT TO V INT CONVTN OVER NE MP (MINIMUM CTT MINUS 86 DEG C) WC & EC RAJ (MINIMUM CTT MINUS 73 DEG C) (.) SCT LOW/MED CLOUDS WITH EMBDD ISOL MOD TO INT CONVTN OVER REST MP E GUJ MADHYA MAHA N VID SW MRTHWD AND ISOL WK TO MOD CONVTN OVER REST RAJ REST GUJ REST MAHA & N GOA (.) SCT LOW/MED CLOUDS OVER REST GOA (.)

SOUTH:-

SCT LOW/MED CLOUDS WITH EMBDD INT TO V INT CONVTN OVER S SIK ADJ NW TN KER (MINIMUM CTT MINUS 91 DEG C) (.) SCT LOW/MED CLOUDS WITH EMBDD ISOL MOD TO INT CONVTN OVER N NIK TLNGN AP (.) SCT LOW/MED CLOUDS WITH EMBDD WK TO MOD CONVTN OVER REST KRNTK LKSDP ILS S ANDAMAN ILS (.) SCT LOW/MED CLOUDS OVER REST PARTS OF THE REGION (.)

ARABIAN SEA:-

SCT LOW/MED CLOUDS WITH EMBDD INT TO V INT CONVTN OVER SE ARSEA OFF KRNTK COAST AND WK TO MOD CONVTN OVER NE & WC ARSEA REST SOUTH ARSEA AND LKSDP ILS AREA COMORI AREA (.)

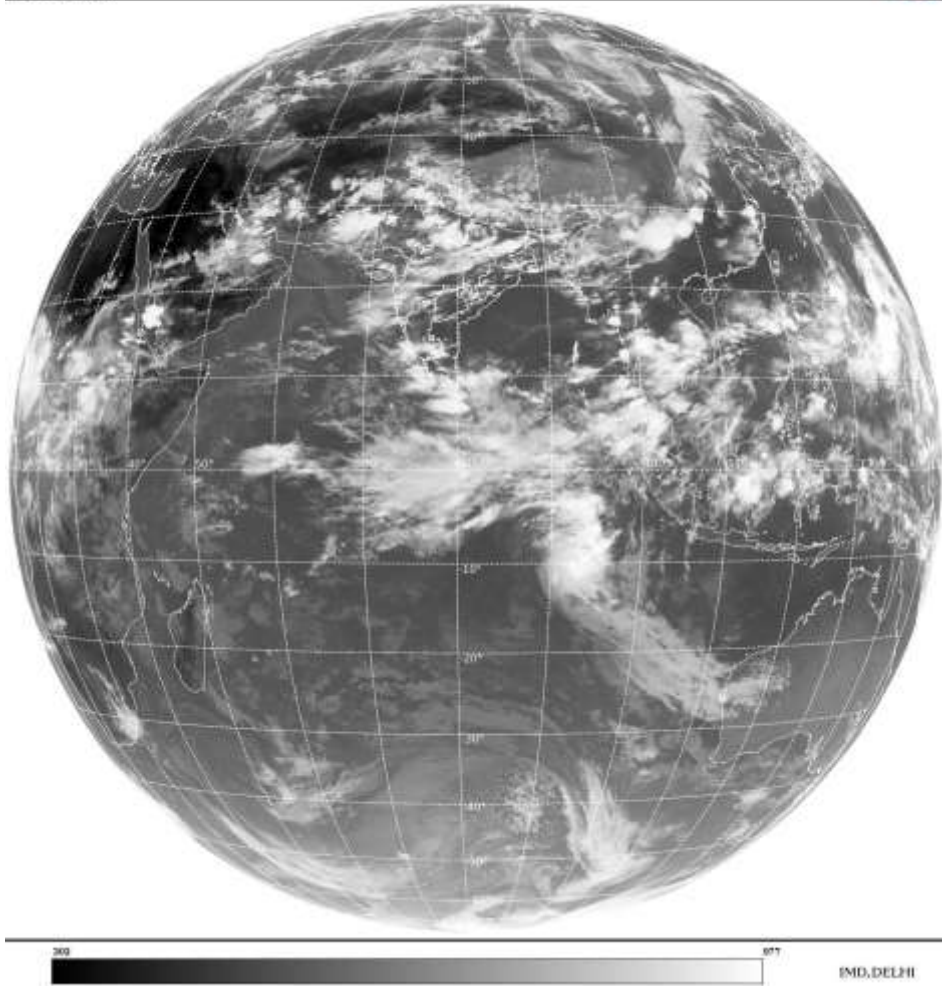
BAY OF BENGAL & ANDAMAN SEA:-

SCT TO SCT LOW/MED CLOUDS WITH EMBDD INT TO V INT CONVTN OVER S BAY & S ANDAMAN SEA (.) SCT LOW/MED CLOUDS WITH EMBDD MOD TO INT CONVTN OVER NE BAY & SW BAY & N ANDAMAN SEA (.)

CLOUDS DESCRIPTION OUTSIDE INDIA:-

SAT : INSAT-3D IMG
Thermal Infrared1 Count 10.8 um
LIB FULL DISK

27-07-2022(1200 to 1226) GMT
27-07-2022(1730 to 1756) IST



SCT LOW/MED CLOUDS WITH EMBDD MOD TO INT CONVTN OVER SRI LANKA MALDIVES PALK STR GULF OF MANNAR PAK NEPAL BHUTAN TIBET CHINA MYANMAR THAILAND GULF OF THAILAND CAMBODIA LAOS SUMATRA STR OF MALACCA MALAYSIA BORNEO SOUTH CHINA SEA CELEBES ILS & SEA PHILIPPINES TAIWAN YELLOW SEA AND OVER INDIAN OCEAN BET LAT 5.0N TO 16.0S LONG 50.0E TO99.0E (.)

TOO 27/1910 HRS IST=

NNNN

LEGEND:-

REGION	NORTH	J&K HP PJB HARY DLH UP UTRKND
	EAST	BHR JHRKND CHTGH OR WB SKM NORTH- EAST STATES
	WEST	RAJ MP GUJ MAHA GOA
	SOUTH	TLNGN AP KRNTK KER TN LKSDP ANDAMAN & NICOBAR ILS

CLOUD DISTRIBUTION	ISOL	ISOLATED (LESS THAN 25%)	
	SCT	SCATTERED (25 TO 50%)	
	BKN	BROKEN (51 TO 75%)	
	SLD	SOLID (GREATER THAN 75%)	
CLOUDS TOP TEMPERATURE	CTT	CLOUD TOP TEMPERATURE	
CONVECTION	WK CONVTN	WEAK CONVECTION (CTT GREATER THAN -25°C)	
	MOD CONVTN	MODERATE CONVECTION (CTT BETWEEN -25°C TO -40°C)	
	INT CONVTN	INTENSE CONVECTION (CTT BETWEEN -41°C TO -70°C)	
	V INT CONVTN	VERY INTENSE CONVECTION (CTT LESS THAN -70°C)	
METEOROLOGICAL SUB-DIVISIONS, STATES & UNION TERRITORIES	ARUPR	ARUNACHAL PRADESH	
	BHR	BIHAR	
	CHTGH	CHHATTISGARH	
	COTL AP	COASTAL ANDHRA PRADESH	
	COTL KRNTK	COASTAL KARNATAKA	
	COTL ORS	COASTAL ORISSA	
	GUJ	GUJARAT	
	GWB	GANGETIC WEST BENGAL	
	HARY	HARYANA	
	DLH	DELHI	
	HP	HIMACHAL PRADESH	
	J&K	JAMMU AND KASHMIR	
	JHRKND	JHARKHAND	
	KER	KERALA	
	KKN	KONKAN	
	LKSDP	LAKSHADWEEP	
	M MAHA	MADHYA MAHARASHTRA	
	MAHA	MAHARASHTRA	
	MANI	MANIPUR	
	MEGHA	MEGHALAYA	
	MIZO	MIZORAM	
	MP	MADHYA PRADESH	
		MRTHWD	MARATHWADA
		NAGA	NAGALAND
N COTL AP		NORTH COASTAL ANDHRA PRADESH	
NIK		NORTH INTERIOR KARNATAKA	
ORS		ORISSA	
PJB		PUNJAB	
RAJ		RAJASTHAN	
RYLSM		RAYALASEEMA	
SAU & KUTCH		SAURASHTRA & KUTCH	
SHWB		SUB-HIMALAYAN WEST BENGAL	
SIK		SOUTH INTERIOR KARNATAKA	
SKM		SIKKIM	

	TLNGN	TELANGANA
	TN	TAMIL NADU
	TRP	TRIPURA
	UP	UTTAR PRADESH
	UTRKND	UTTARAKHAND
	VID	VIDHARBHA
	SHWB	SUB HIMALAYAN WEST BENGAL
	GWB	GANGETIC WEST BENGAL
	ARSEA	ARABIAN SEA
	ILS	ISLANDS
MISCELLANEOUS	ASSW	IN ASSOCIATION WITH
	ASSTD	ASSOCIATED
	LLC	LOW LEVEL CIRCULATION
	EMBDD	EMBEDDED
	N/HOOD	NEIGHBOURHOOD
	EXT	EXTREME