



भारत मौसम विज्ञान विभाग
पृथ्वी विज्ञान मंत्रालय
India Meteorological Department
Ministry of Earth Sciences

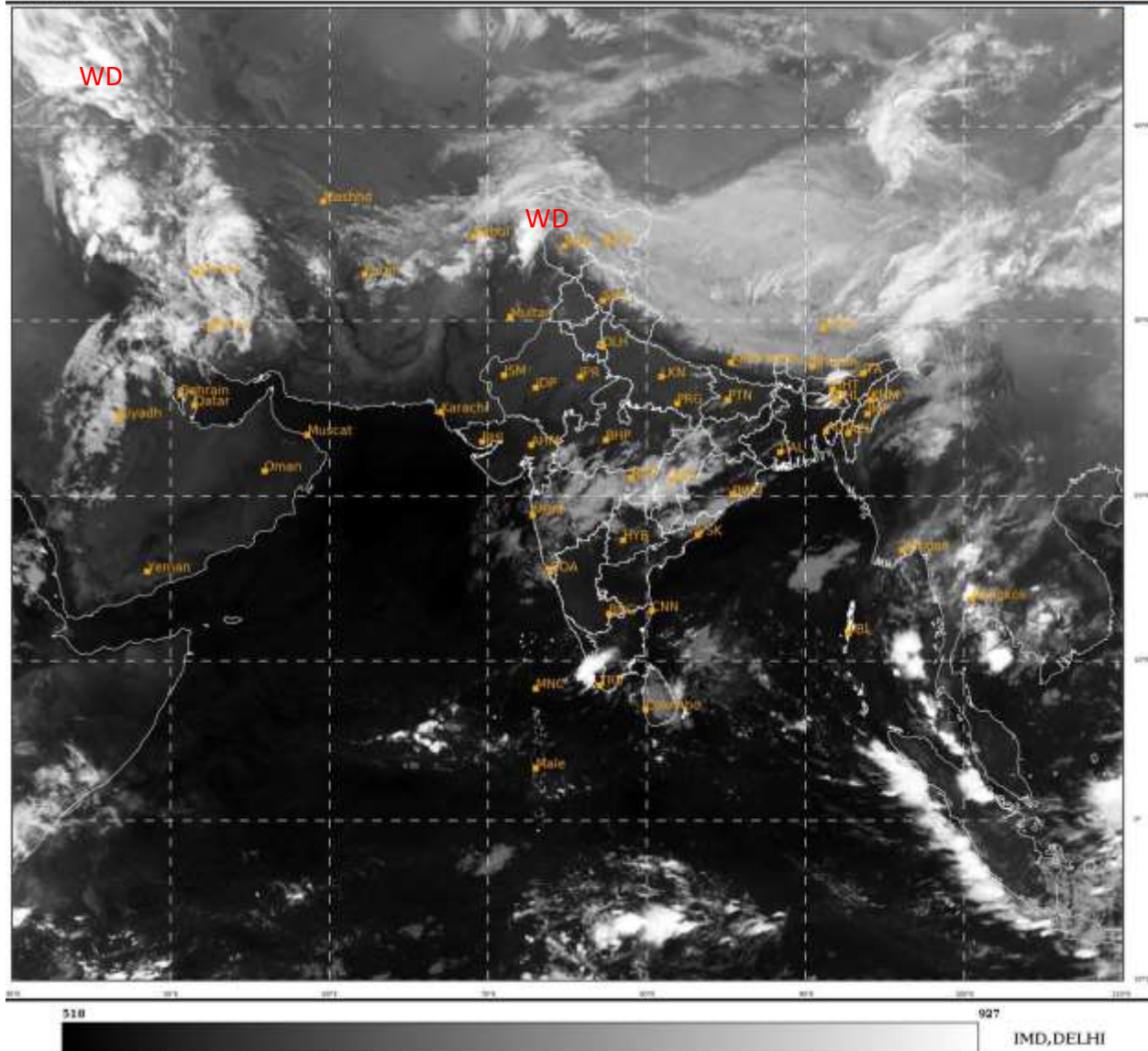


SATELLITE BULLETIN BASED ON SATELLITE IMAGERIES AND PRODUCTS

10.04.2021 TIME 2100 UTC

SAT : INSAT-3D IMG
IMG_TIR1 10.8 um
LIC Mercator

10-04-2021/(2130 to 2156) GMT
11-04-2021/(0300 to 0326) IST



TCIN50 DEMS 102100

SATELLITE BULLETIN BASED ON INSAT-3D PIC OF 102130 UTC (.)

REGION COVERED BETWEEN LAT 50.0°N TO 30.0°S AND LONG 40.0°E TO 125.0°E (.)

SALIENT FEATURES:-

WESTERN DISTURBANCE (WD):-

SCT MULTILAYERED CLOUDS OVER AFGAN N PAK J&K LADAKH AND N/HOOD IN ASSW **WD** OVER THE AREA (.)

SCT MULTILAYERED CLOUDS OVER CASPIAN SEA W IRAN PERSIAN GULF AND N/HOOD IN ASSW **ANOTHER WD** OVER THE AREA (.)

CLOUDS DESCRIPTION WITHIN INDIA:-

NORTH:-

SCT LOW/MED CLOUDS WITH EMBDD WK TO MOD CONVTN OVER LADAKH N HP N UTRKND EXT E UP (.) SCT LOW/MED CLOUDS OVER J&K (.)

EAST:-

SCT LOW/MED CLOUDS WITH EMBDD MOD TO INT CONVTN OVER C MEGHA (.) SCT LOW/MED CLOUDS WITH EMBDD WK TO MOD CONVTN OVER CHTGH ADJ W JHRKND ORS EC GWB SKM ARUPR EXT N ASSAM (.) SCT LOW/MED CLOUDS OVER S BHR S SHWB (.)

WEST:-

SCT LOW/MED CLOUDS WITH EMBDD ISOL MOD TO INT CONVTN OVER SC VID (.) SCT LOW/MED CLOUDS WITH EMBDD WK TO MOD CONVTN OVER S MP MAHA (.) SCT LOW/MED CLOUDS OVER NE MP E GUJ (.)

SOUTH:-

SCT LOW/MED CLOUDS WITH EMBDD MOD TO INT CONVTN OVER SC KER ADJ W TN (.) SCT LOW/MED CLOUDS OVER NORTH OF NIK NORTH TLNGN N COTL AP AND EXT SE TN (.)

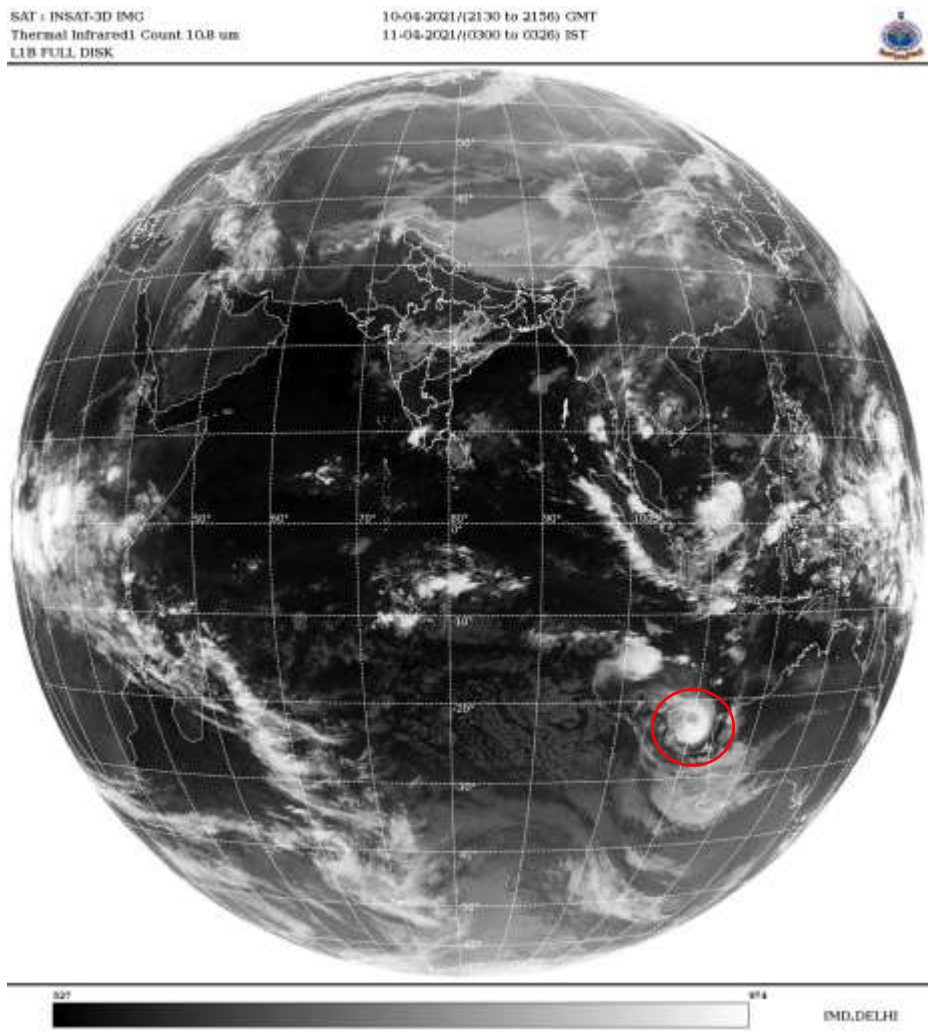
ARABIAN SEA:-

SCT LOW/MED CLOUDS WITH EMBDD ISOL MOD TO INT CONVTN OVER EXT SC ARSEA (.)

BAY OF BENGAL & ANDAMAN SEA:-

SCT LOW/MED CLOUDS WITH EMBDD INT TO V INT CONVTN OVER E PARTS OF ANDAMAN SEA AND ISOL WK TO MOD CONVTN OVER SW BAY (.)

CLOUDS DESCRIPTION OUTSIDE INDIA:-



VORTEX OVER SOUTH INDIAN OCEAN:-

VORTEX (SEROJA) OVER SE INDIAN OCEAN CENTERED NEAR 23.1S/109.8E (.) INTENSITY T4.0/4.0 (.) ASST BKN LOW/MED CLOUDS WITH EMBDD INT TO V INT CONVTN OVER AREA BET LAT 20.0S TO 25.0S LONG 107.5E TO 112.5E (.)

SCT LOW/MED CLOUDS WITH EMBDD MOD TO INT CONVTN OVER SRI LANKA BHUTAN TIBET CHINA E CHINA SEA THAILAND CAMBODIA S LAOS GULF OF THAILAND SUMATRA STR OF MALACCA MALAY PENINSULA BORNEO S CHINA SEA JAVA ILS & SEA CELEBES ILS & SEA S PHILIPPINES SULU SEA MADAGASCAR MOZAMBIQUE CHANNEL AND OVER INDIAN OCEAN BET LAT 2.5S TO 11.5S LONG 73.0E TO 87.0E (.)

TOO 11/0430EF=

NNNN

LEGEND:-

REGION	NORTH	J&K HP PJB HARY DLH UP UTRKND
	EAST	BHR JHRKND CHTGH ORS WB SKM NORTH-EAST STATES
	WEST	RAJ MP GUJ MAHA GOA
	SOUTH	TLNGN AP KRNTK KER TN LKSDP ANDAMAN & NICOBAR ILS

CLOUD DISTRIBUTION	ISOL	ISOLATED (LESS THAN 25%)
	SCT	SCATTERED (25 TO 50%)
	BKN	BROKEN (51 TO 75%)
	SLD	SOLID (GREATER THAN 75%)
CLOUDS TOP TEMPERATURE	CTT	CLOUD TOP TEMPERATURE
CONVECTION	WK CONVTN	WEAK CONVECTION (CTT GREATER THAN -25°C)
	MOD CONVTN	MODERATE CONVECTION (CTT BETWEEN -25°C TO -40°C)
	INT CONVTN	INTENSE CONVECTION (CTT BETWEEN -41°C TO -70°C)
	V INT CONVTN	VERY INTENSE CONVECTION (CTT LESS THAN -70°C)
METEOROLOGICAL SUB-DIVISIONS, STATES & UNION TERRITORIES	ARUPR	ARUNACHAL PRADESH
	BHR	BIHAR
	CHTGH	CHHATTISGARH
	COTL AP	COASTAL ANDHRA PRADESH
	COTL KRNTK	COASTAL KARNATAKA
	COTL ORS	COASTAL ORISSA
	GUJ	GUJARAT
	GWB	GANGETIC WEST BENGAL
	HARY	HARYANA

	DLH	DELHI
	HP	HIMACHAL PRADESH
	J&K	JAMMU AND KASHMIR
	JHRKND	JHARKHAND
	KER	KERALA
	KKN	KONKAN
	LKSDP	LAKSHADWEEP
	M MAHA	MADHYA MAHARASHTRA
	MAHA	MAHARASHTRA
	MANI	MANIPUR
	MEGHA	MEGHALAYA
	MIZO	MIZORAM
	MP	MADHYA PRADESH
	MRTHWD	MARATHWADA
	NAGA	NAGALAND
	N COTL AP	NORTH COASTAL ANDHRA PRADESH
	NIK	NORTH INTERIOR KARNATAKA
	ORS	ORISSA
	PJB	PUNJAB
	RAJ	RAJASTHAN
	RYLSM	RAYALASEEMA
	SAU & KUTCH	SAURASHTRA & KUTCH
	SHWB	SUB-HIMALAYAN WEST BENGAL
	SIK	SOUTH INTERIOR KARNATAKA
	SKM	SIKKIM
	TLNGN	TELANGANA
	TN	TAMIL NADU
	TRP	TRIPURA
	UP	UTTAR PRADESH
	UTRKN	UTTARAKHAND
	VID	VIDHARBHA
	SHWB	SUB HIMALAYAN WEST BENGAL
	GWB	GANGETIC WEST BENGAL
	ARSEA	ARABIAN SEA
	ILS	ISLANDS
MISCELLANEOUS	ASSW	IN ASSOCIATION WITH
	ASSTD	ASSOCIATED
	LLC	LOW LEVEL CIRCULATION
	EMBDD	EMBEDDED
	N/HOOD	NEIGHBOURHOOD
	EXT	EXTREME