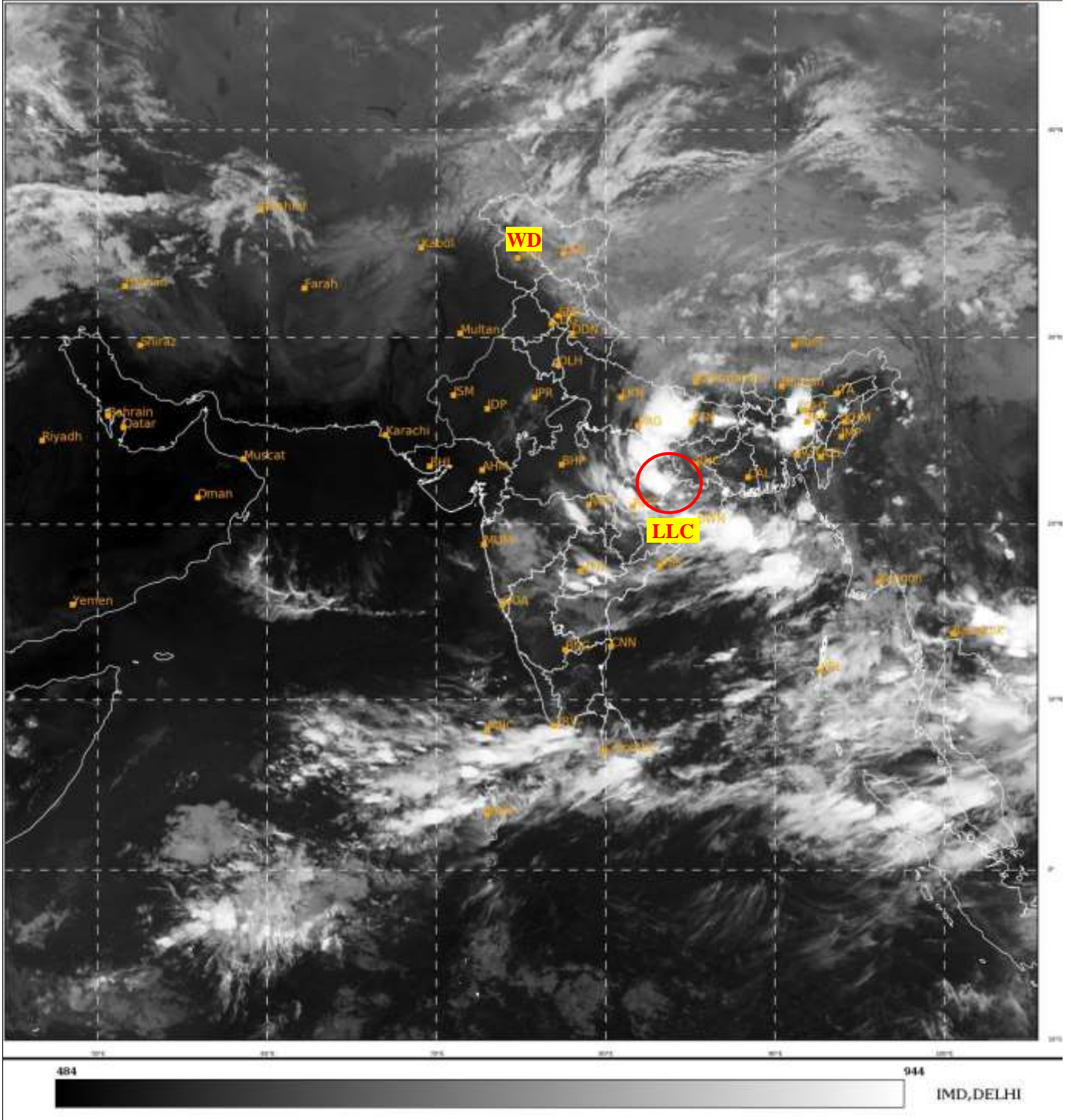




**SATELLITE BULLETIN BASED ON SATELLITE
IMAGERIES AND PRODUCTS**
02.10.2023 TIME 1500 UTC

SAT : INSAT-3D IMG
IMG_TIR1 10.8 um
LIC Mercator

02-10-2023/(1500 to 1526) GMT
02-10-2023/(2030 to 2056) IST



TCIN50 DEMS 021500

SATELLITE BULLETIN BASED ON INSAT-3D PIC OF 021500 UTC (.)

REGION COVERED BETWEEN LAT 50.0°N TO 35.0°S AND LONG 40.0°E TO 125.0°E (.)

SALIENT FEATURES:-

LLC OVER SW JHARKHAND ADJ N CHHATTISGARH & N/HOOD:-

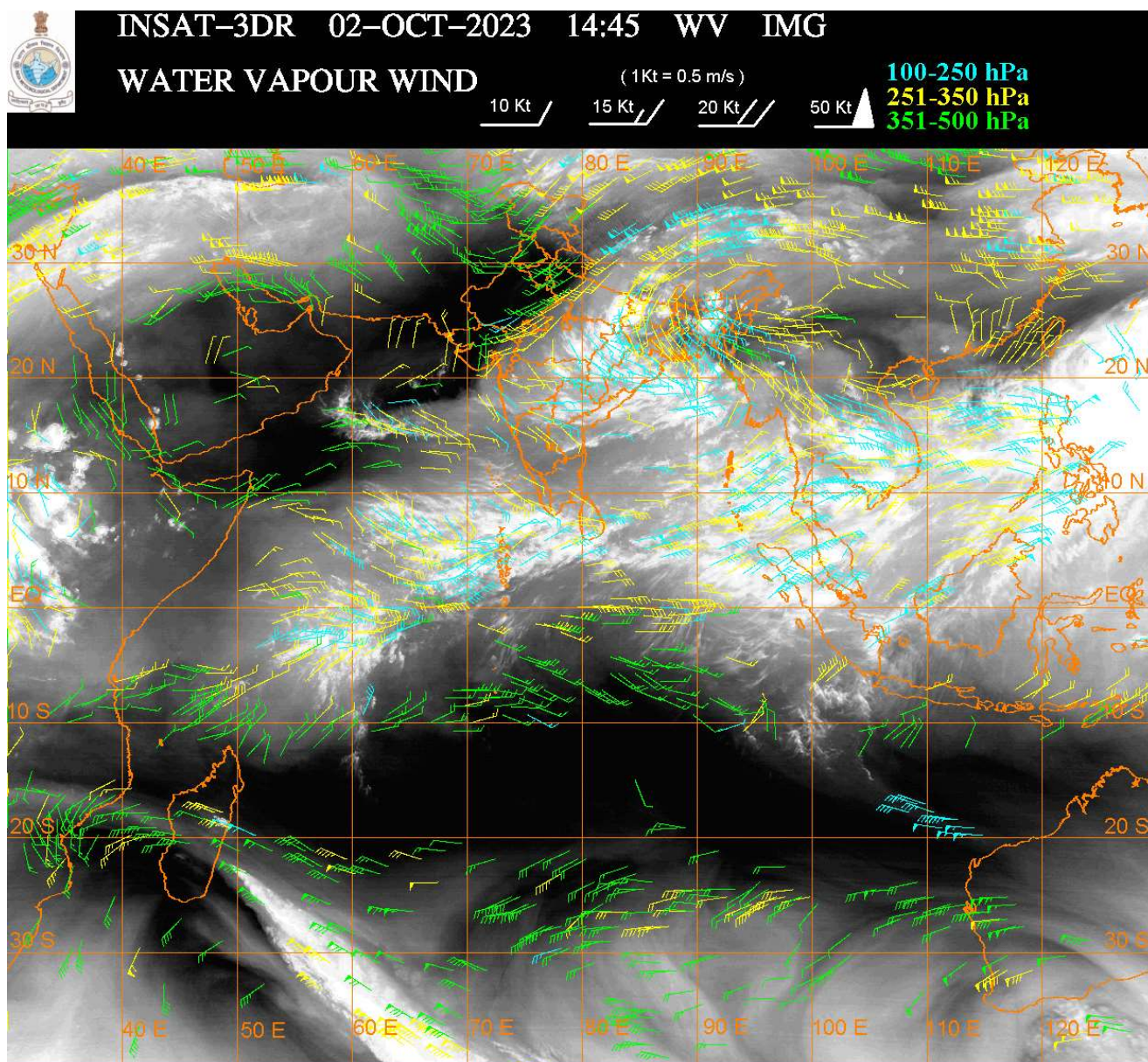
LOW LEVEL CIRCULATION (LLC) OVER SW JHRKND ADJ N CHTGH & N/HOOD (.) ASSTD SCT TO BKN LOW/MED CLOUDS WITH EMBDD INT TO V INT CONVTN OVER E UP W BHR E MP N CHTGH ORS (MINIMUM CTT MINUS 93 DEG CEL) AND MODERATE CONVTN OVER JHRKND (.)

WESTERN DISTURBANCE (WD):-

SCT MULTILAYERED CLOUDS OVER EXT N PAK J&K LADAKH N HP N UTRKND & N/HOOD IN ASSW WD OVER THE AREA (.)

THUNDERSTORM / CONVECTIVE ACTIVITY:-

**INTENSE THUNDERSTORM / CONVECTIVE ACTIVITY OBSERVED OVER E UP BHR N CHTGH
ORS EXT SW GWB S SHWB MEGHA ASSAM W NAGA E MP VID TLNGN (.)**



CLOUDS DESCRIPTION WITHIN INDIA:-

NORTH:-

**SCT TO BKN LOW/MED CLOUDS WITH EMBDD INT TO V INT CONVTN OVER EAST PARTS OF
E UP (MINIMUM CTT MINUS 85 DEG CEL) (.) SCT LOW/MED CLOUDS WITH EMBDD MOD TO
INT CONVTN OVER NW LADAKH AND WK TO MOD CONVTN OVER REST LADAKH N HP N
UTRKN D REST E UP (.) SCT LOW/MED CLOUDS OVER J&K S HP S UTRKN D W UP (.)**

EAST:-

**SCT TO BKN LOW/MED CLOUDS WITH EMBDD INT TO V INT CONVTN OVER BHR N CHTGH
ORS EXT SW GWB MEGHA ASSAM W NAGA & N BD (MINIMUM CTT MINUS 93 DEG CEL) (.) SCT
LOW/MED CLOUDS WITH EMBDD MOD TO INT CONVTN OVER JHRKN D S CHTGH S SHWB
AND ISOL WK TO MOD CONVTN OVER REST GWB N SHWB SKM REST NE STATES & S BD (.)**

WEST:-

**SCT LOW/MED CLOUDS WITH EMBDD INT TO V INT CONVTN OVER NE MP (MINIMUM CTT
MINUS 80 DEG CEL) (.) SCT LOW/MED CLOUDS WITH EMBDD MOD TO INT CONVTN OVER SE
MP VID NORTH MADHYA MAHA AND ISOL WK TO MOD CONVTN OVER SW MP REST MAHA (.)
SCT LOW/MED CLOUDS OVER E RAJ NW MP SE GUJ GOA (.)**

SOUTH:-

**SCT LOW/MED CLOUDS WITH EMBDD INT TO V INT CONVTN OVER S TLNGN (MINIMUM CTT
MINUS 90 DEG CEL) (.) SCT LOW/MED CLOUDS WITH EMBDD MOD TO INT CONVTN OVER E
NIK N TLNGN S KER EXT SW TN ANDAMAN & NICOBAR ILS AND ISOL WK TO MOD CONVTN
OVER W NIK E SIK RYLSM COTL AP REST TN LKSDP ILS (.) SCT LOW/MED CLOUDS OVER
REST KRNTK N KER (.)**

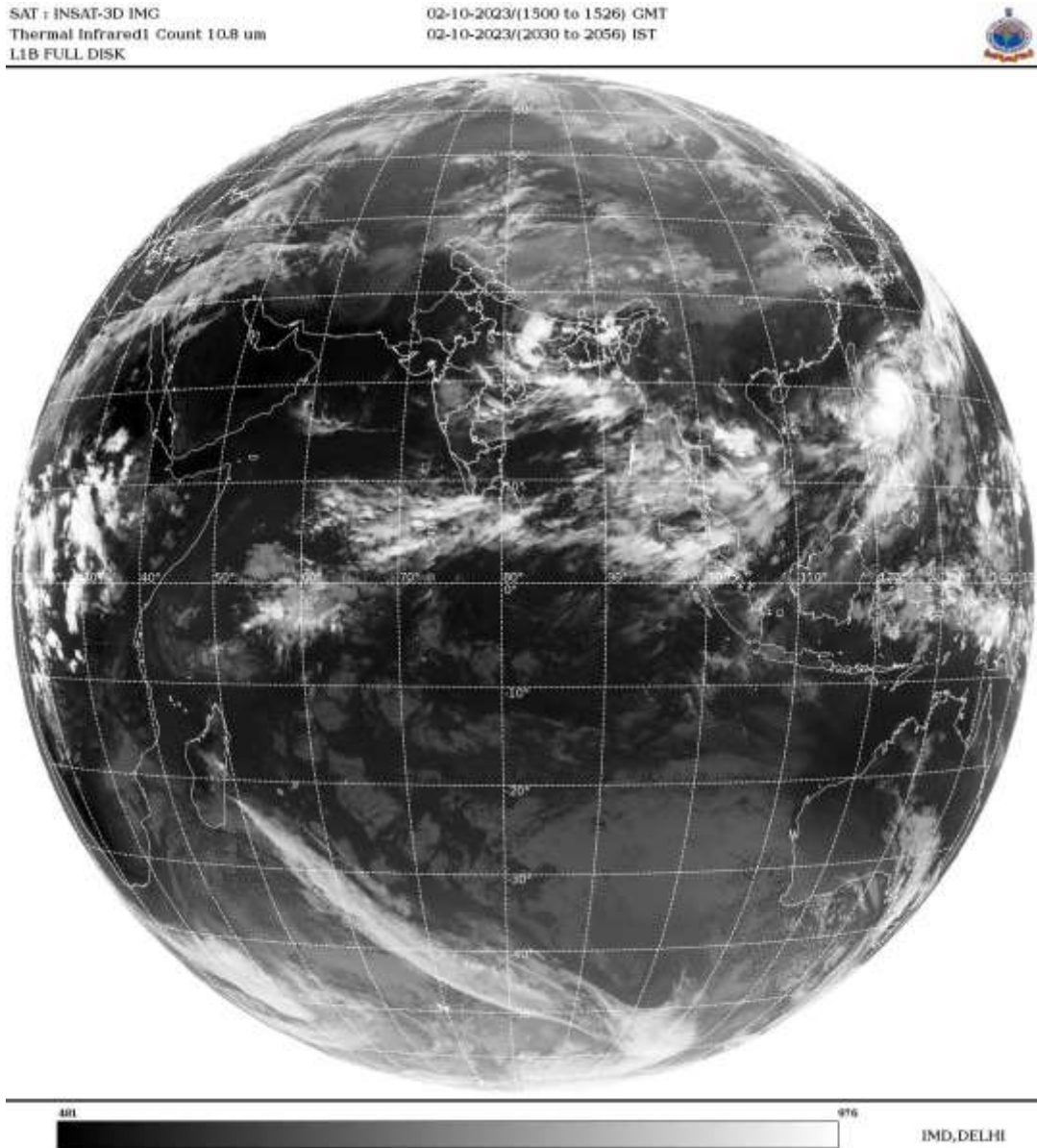
ARABIAN SEA:-

SCT LOW/MED CLOUDS WITH EMBDD INT TO V INT CONVTN OVER SE ARSEA AND COMORIN AREA (.) SCT LOW/MED CLOUDS WITH EMBDD MOD TO INT CONVTN OVER WC & SW ARSEA AND ISOL WK TO MOD CONVTN OVER EC ARSEA & LKSDP ILS AREA (.)

BAY OF BENGAL & ANDAMAN SEA:-

SCT TO BKN LOW/MED CLOUDS WITH EMBDD INT TO V INT CONVTN OVER NORTH & EC BAY (.) SCT LOW/MED CLOUDS WITH EMBDD MOD TO INT CONVTN OVER WC & SOUTH BAY ANDAMAN SEA ARAKAN COAST GULF OF MARTABAN AND TENASSERIM COAST (.)

CLOUDS DESCRIPTION OUTSIDE INDIA:-



BKN LOW/MED CLOUDS WITH EMBDD MOD TO INT CONVTN OVER SRI LANKA GULF OF MANNAR MALDIVES NEPAL BHUTAN TIBET CHINA YELLOW SEA EAST CHINA SEA MYANMAR THAILAND GULF OF THAILAND CAMBODIA LAOS S VIETNAM SUMATRA ADJ WEST COAST STR OF MALACCA MALAYSIA BORNEO SOUTH CHINA SEA CELEBES ILS & SEA PHILIPPINES SULU SEA AND OVER INDIAN OCEAN BET LAT 5.0N TO 7.0S LONG 50.0E TO 70.0E AND BET LAT 5.0N TO EQ LONG 70.0E TO 100.0E (.)

TOO 02/2130 HRS IST=

NNNN

LEGEND:-

REGION	NORTH	J&K HP PJB HARY DLH UP UTRKND	
	EAST	BHR JHRKND CHTGH OR WB SKM NORTH- EAST STATES	
	WEST	RAJ MP GUJ MAHA GOA	
	SOUTH	TLNGN AP KRNTK KER TN LKSDP ANDAMAN & NICOBAR ILS	
CLOUD DISTRIBUTION	ISOL	ISOLATED (LESS THAN 25%)	
	SCT	SCATTERED (25 TO 50%)	
	BKN	BROKEN (51 TO 75%)	
	SLD	SOLID (GREATER THAN 75%)	
CLOUDS TOP TEMPERATURE	CTT	CLOUD TOP TEMPERATURE	
CONVECTION	WK CONV TN	WEAK CONVECTION (CTT GREATER THAN -25°C)	
	MOD CONV TN	MODERATE CONVECTION (CTT BETWEEN -25°C TO -40°C)	
	INT CONV TN	INTENSE CONVECTION (CTT BETWEEN -41°C TO -70°C)	
	V INT CONV TN	VERY INTENSE CONVECTION (CTT LESS THAN -70°C)	
METEOROLOGICAL SUB- DIVISIONS, STATES & UNION TERRITORIES	ARUPR	ARUNACHAL PRADESH	
	BHR	BIHAR	
	CHTGH	CHHATTISGARH	
	COTL AP	COASTAL ANDHRA PRADESH	
	COTL KRNTK	COASTAL KARNATAKA	
	COTL ORS	COASTAL ORISSA	
	GUJ	GUJARAT	
	GWB	GANGETIC WEST BENGAL	
	HARY	HARYANA	
	DLH	DELHI	
	HP	HIMACHAL PRADESH	
	J&K	JAMMU AND KASHMIR	
	JHRKND	JHARKHAND	
	KER	KERALA	
	KKN	KONKAN	
	LKSDP	LAKSHADWEEP	
	M MAHA	MADHYA MAHARASHTRA	
	MAHA	MAHARASHTRA	
	MANI	MANIPUR	
	MEGHA	MEGHALAYA	
	MIZO	MIZORAM	
	MP	MADHYA PRADESH	
		MRTHWD	MARATHWADA
		NAGA	NAGALAND
N COTL AP		NORTH COASTAL ANDHRA PRADESH	
NIK		NORTH INTERIOR KARNATAKA	

	ORS	ORISSA
	PJB	PUNJAB
	RAJ	RAJASTHAN
	RYLSM	RAYALASEEMA
	SAU & KUTCH	SAURASHTRA & KUTCH
	SHWB	SUB-HIMALAYAN WEST BENGAL
	SIK	SOUTH INTERIOR KARNATAKA
	SKM	SIKKIM
	TLNGN	TELANGANA
	TN	TAMIL NADU
	TRP	TRIPURA
	UP	UTTAR PRADESH
	UTRKND	UTTARAKHAND
	VID	VIDHARBHA
	SHWB	SUB HIMALAYAN WEST BENGAL
	GWB	GANGETIC WEST BENGAL
	ARSEA	ARABIAN SEA
	ILS	ISLANDS
MISCELLANEOUS	ASSW	IN ASSOCIATION WITH
	ASSTD	ASSOCIATED
	LLC	LOW LEVEL CIRCULATION
	EMBDD	EMBEDDED
	N/HOOD	NEIGHBOURHOOD
	EXT	EXTREME