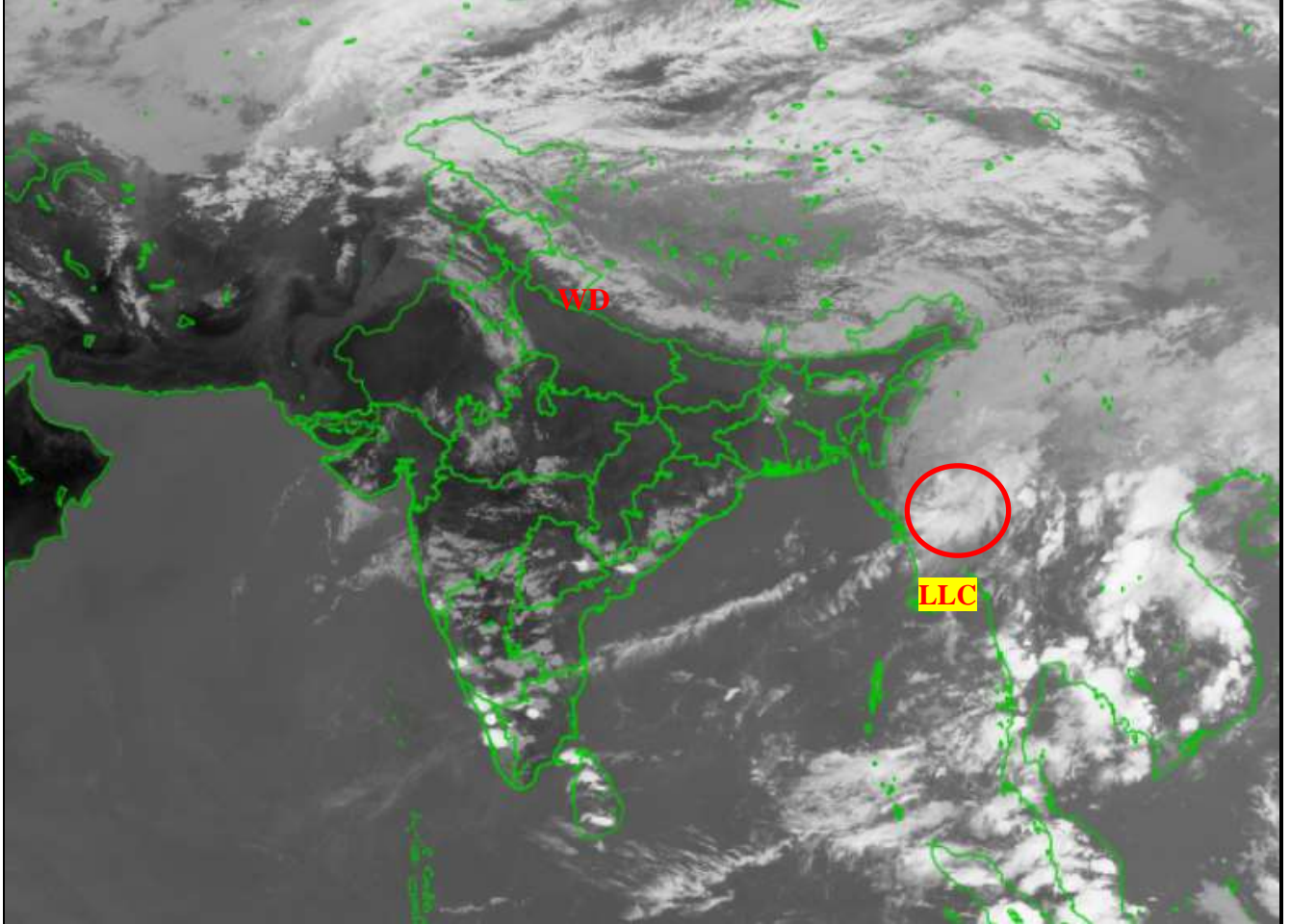




भारत मौसम विज्ञान विभाग  
पृथ्वी विज्ञान मंत्रालय  
India Meteorological Department  
Ministry of Earth Sciences



**SATELLITE BULLETIN BASED ON SATELLITE  
IMAGERIES AND PRODUCTS**  
**23.03.2022 TIME 1200 UTC**



TCIN50 DEMS 231200

SATELLITE BULLETIN BASED ON INSAT-3DR PIC OF 231200 UTC (.)

REGION COVERED BETWEEN LAT 50.0°N TO 30.0°S AND LONG 40.0°E TO 125.0°E (.)

**SALIENT FEATURES:-**

**LLC OVER CENTRAL MYANMAR & N/HOOD:-**

SCT TO BKN LOW/MED CLOUDS WITH EMBDD MOD TO INT CONVTN OVER CENTRAL MYANMAR & N/HOOD IN ASSW LOW LEVEL CIRCULATION (LLC) OVER THE AREA (.)  
MINIMUM CTT MINUS 68 DEG C (.)

**WESTERN DISTURBANCE (WD):-**

SCT MULTILAYERED CLOUDS OVER N AFGAN EXT N PAK NW LADAKH AND N/HOOD IN ASSW WD OVER THE AREA (.)

**PRECIPITATION NOWCASTING:-**

**(BASED ON SCOPE NOWCASTING TOOL AT A LEAD TIME OF 180 MINUTES):-**

RAINFALL UP TO 0.5-5.0 MM OBSERVED OVER NICOBAR ILS (.)

**CLOUDS DESCRIPTION WITHIN INDIA:-**

**NORTH:-**

SCT LOW/MED CLOUDS WITH EMBDD MOD TO INT CONVTN OVER NW LADAKH NW J&K (.)  
SCT LOW/MED CLOUDS WITH EMBDD ISOL WK CONVTN OVER REST LADAKH REST J&K N HP  
N UTRKND PJB HARY DLH (.) SCT LOW/MED CLOUDS OVER S HP S UTRKND.)

**EAST:-**

SCT LOW/MED CLOUDS WITH EMBDD ISOL MOD TO INT OVER CONVTN S CHTGH (.)SCT  
LOW/MED CLOUDS WITH EMBDD WK CONVTN OVER SKM ARUPR MEGHA NAGA (.) SCT  
LOW/MED CLOUDS OVER S ORS N GWB N SHWB MANI& MIZO (.)

**WEST:-**

SCT LOW/MED CLOUDS WITH EMBDD MOD TO INT CONVTN OVER S M MAHA GOA (.) SCT  
LOW/MED CLOUDS WITH EMBDD ISOL WK CONVTN OVER E RAJ MP GUJ S KKN ADJ M MAHA  
VID (.) SCT LOW/MED CLOUDS OVER MRTHWD NW RAJ GOA (.)

**SOUTH:-**

SCT LOW/MED CLOUDS WITH EMBDD MOD TO INT CONVTN OVER KER NW TN SIK COTL  
KRNTNK NICOBAR (.) SCT LOW/MED CLOUDS WITH EMBDD ISOL WK TO MOD CONVTN OVER  
ANDAMAN ILS (.) SCT LOW/MED CLOUDS OVER RYLSM REST KRNTK COTL AP REST TKER TN  
TLNGN LKSDP (.)

**ARABIAN SEA:-**

SCT LOW/MED CLOUDS OVER WITH EMBDD MOD TO INT CONVTN OVER EC SE & COMORIN  
ARSEA OFF MAHA- KER – KRNTK COAST (.) SCT LOW/MED CLOUDS WITH WK TO MOD  
CONVTN OVER GULF OF CAMBAY (.)

**BAY OF BENGAL & ANDAMAN SEA:-**

SCT LOW/MED CLOUDS WITH EMBDD MOD TO INT CONVTN OVER SE BAY ANDAMAN SEA  
ARAKAN COAST GULF OF MARTABAN (.)

**CLOUDS DESCRIPTION OUTSIDE INDIA:**

**VORTEX OVER SOUTH INDIAN OCEAN:-**

VORTEX (**CHARLOTTE**) OVER SOUTH INDIAN OCEAN CENTERED NEAR **20.1S / 109.5E** (.) INTENSITY **T4.0/4.5** (.) ASSTD BKN LOW/MED CLOUDS WITH EMBDD INT TO V INT CONVTN OVER AREA BET LAT 17.0S TO 23.0S LONG 105.0E TO 112.0E (.)

ANOTHER VORTEX OVER SOUTH INDIAN OCEAN CENTERED NEAR **13.0S / 75.8E** (.) INTENSITY **T2.0/2.0** (.) ASSTD BKN LOW/MED CLOUDS WITH EMBDD INT TO V INT CONVTN OVER AREA BET LAT 08.0S TO 18.0S LONG 67.0E TO 83.0E (.)

SCT LOW/MED CLOUDS WITH EMBDD MOD TO INT CONVTN OVER N TIBET CHINA MYANMAR THAILAND GULF OF THAILAND LAOS VIETNAM SUMATRA STR OF MALACCA MALAYSIA BORNEO S CHINA SEA JAVA ILS & SEA CELEBES ILS & SEA S PHILIPPINES TAIWAN YELLOW SEA MADAGASCAR MOZAMBIQUE CHANNEL AND OVER INDIAN OCEAN BET LAT 2.0S TO 20.0S LONG 50.0E TO 90.0E AND BET LAT 5.0S TO 25.0S LONG 90.0E TO 115.0E (.)

TOO 23/1850 HRS IST=

NNNN

**LEGEND:-**

REGION	NORTH	J&K HP PJB HARY DLH UP UTRKND
	EAST	BHR JHRKND CHTGH OR WB SKM NORTH- EAST STATES
	WEST	RAJ MP GUJ MAHA GOA
	SOUTH	TLNGN AP KRNTK KER TN LKSDP ANDAMAN & NICOBAR ILS

CLOUD DISTRIBUTION	ISOL	ISOLATED (LESS THAN 25%)
	SCT	SCATTERED (25 TO 50%)
	BKN	BROKEN (51 TO 75%)
	SLD	SOLID (GREATER THAN 75%)
CLOUDS TOP TEMPERATURE	CTT	CLOUD TOP TEMPERATURE
CONVECTION	WK CONVTN	WEAK CONVECTION (CTT GREATER THAN -25°C)
	MOD CONVTN	MODERATE CONVECTION (CTT BETWEEN -25°C TO -40°C)
	INT CONVTN	INTENSE CONVECTION (CTT BETWEEN -41°C TO -70°C)
	V INT CONVTN	VERY INTENSE CONVECTION (CTT LESS THAN -70°C)
METEOROLOGICAL SUB-	ARUPR	ARUNACHAL PRADESH

**DIVISIONS, STATES &  
UNION TERRITORIES**

	<b>BHR</b>	<b>BIHAR</b>
	<b>CHTGH</b>	<b>CHHATTISGARH</b>
	<b>COTL AP</b>	<b>COASTAL ANDHRA PRADESH</b>
	<b>COTL KRNTK</b>	<b>COASTAL KARNATAKA</b>
	<b>COTL ORS</b>	<b>COASTAL ORISSA</b>
	<b>GUJ</b>	<b>GUJARAT</b>
	<b>GWB</b>	<b>GANGETIC WEST BENGAL</b>
	<b>HARY</b>	<b>HARYANA</b>
	<b>DLH</b>	<b>DELHI</b>
	<b>HP</b>	<b>HIMACHAL PRADESH</b>
	<b>J&amp;K</b>	<b>JAMMU AND KASHMIR</b>
	<b>JHRKND</b>	<b>JHARKHAND</b>
	<b>KER</b>	<b>KERALA</b>
	<b>KKN</b>	<b>KONKAN</b>
	<b>LKSDP</b>	<b>LAKSHADWEEP</b>
	<b>M MAHA</b>	<b>MADHYA MAHARASHTRA</b>
	<b>MAHA</b>	<b>MAHARASHTRA</b>
	<b>MANI</b>	<b>MANIPUR</b>
	<b>MEGHA</b>	<b>MEGHALAYA</b>
	<b>MIZO</b>	<b>MIZORAM</b>
	<b>MP</b>	<b>MADHYA PRADESH</b>
	<b>MRTHWD</b>	<b>MARATHWADA</b>
	<b>NAGA</b>	<b>NAGALAND</b>
	<b>N COTL AP</b>	<b>NORTH COASTAL ANDHRA PRADESH</b>
	<b>NIK</b>	<b>NORTH INTERIOR KARNATAKA</b>
	<b>ORS</b>	<b>ORISSA</b>
	<b>PJB</b>	<b>PUNJAB</b>
	<b>RAJ</b>	<b>RAJASTHAN</b>
	<b>RYLSM</b>	<b>RAYALASEEMA</b>
	<b>SAU &amp; KUTCH</b>	<b>SAURASHTRA &amp; KUTCH</b>
	<b>SHWB</b>	<b>SUB-HIMALAYAN WEST BENGAL</b>
	<b>SIK</b>	<b>SOUTH INTERIOR KARNATAKA</b>
	<b>SKM</b>	<b>SIKKIM</b>
	<b>TLNGN</b>	<b>TELANGANA</b>
	<b>TN</b>	<b>TAMIL NADU</b>
	<b>TRP</b>	<b>TRIPURA</b>
	<b>UP</b>	<b>UTTAR PRADESH</b>
	<b>UTRKND</b>	<b>UTTARAKHAND</b>
	<b>VID</b>	<b>VIDHARBHA</b>
	<b>SHWB</b>	<b>SUB HIMALAYAN WEST BENGAL</b>
	<b>GWB</b>	<b>GANGETIC WEST BENGAL</b>
	<b>ARSEA</b>	<b>ARABIAN SEA</b>
	<b>ILS</b>	<b>ISLANDS</b>
<b>MISCELLANEOUS</b>	<b>ASSW</b>	<b>IN ASSOCIATION WITH</b>
	<b>ASSTD</b>	<b>ASSOCIATED</b>

<b>LLC</b>	<b>LOW LEVEL CIRCULATION</b>
<b>EMBDD</b>	<b>EMBEDDED</b>
<b>N/HOOD</b>	<b>NEIGHBOURHOOD</b>
<b>EXT</b>	<b>EXTREME</b>