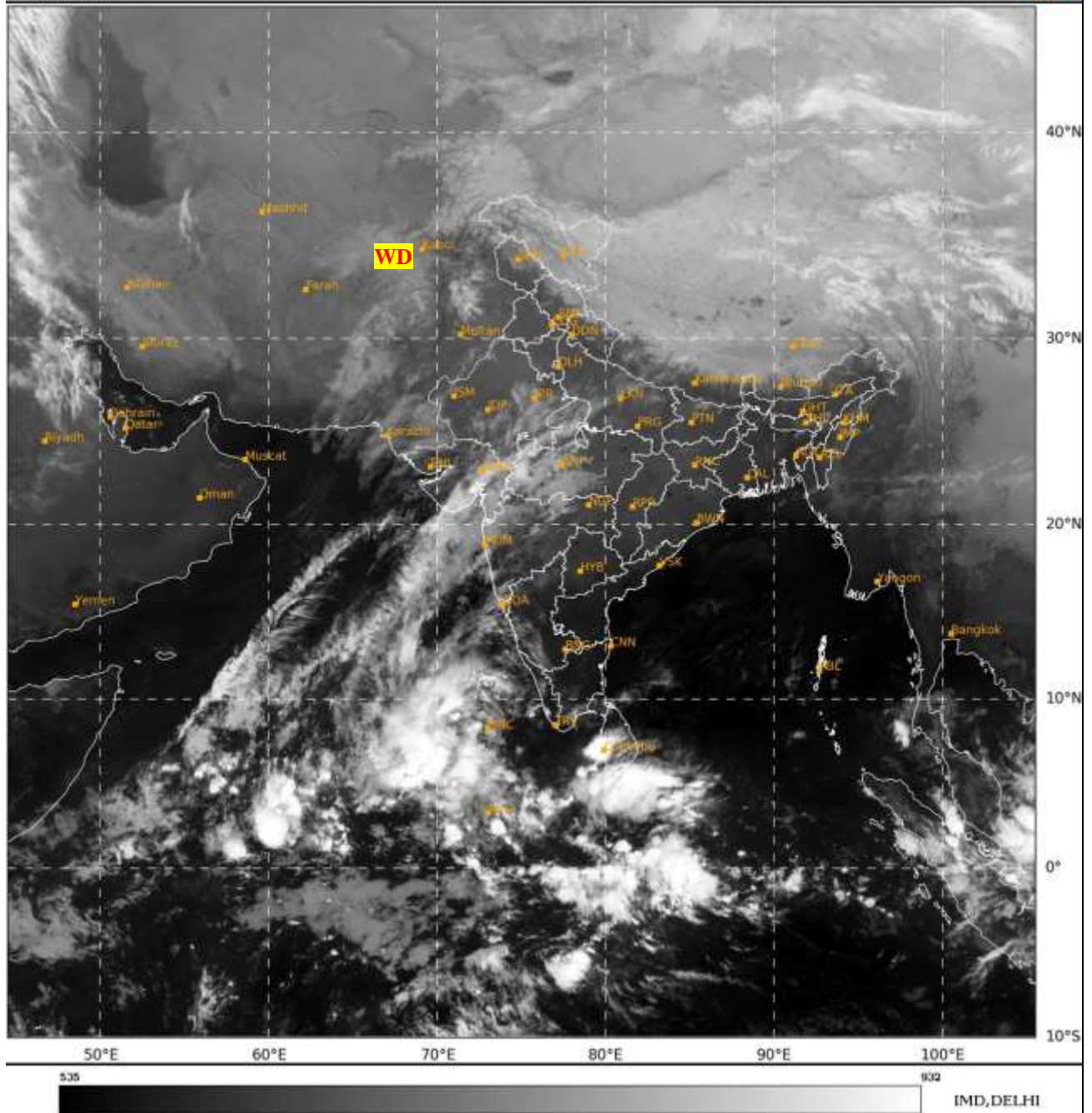




**SATELLITE BULLETIN BASED ON SATELLITE
IMAGERIES AND PRODUCTS**
21.12.2023 TIME 1800 UTC

SAT : INSAT-3D IMG
IMG_TIR1 10.8 um
LIC Mercator

21-12-2023/(1700 to 1726) GMT
21-12-2023/(2230 to 2256) IST



TCIN50 DEMS 211800

SATELLITE BULLETIN BASED ON INSAT-3D PIC OF 211700 UTC (.)

REGION COVERED BETWEEN LAT 50.0°N TO 35.0°S AND LONG 40.0°E TO 125.0°E (.)

SALIENT FEATURES:-

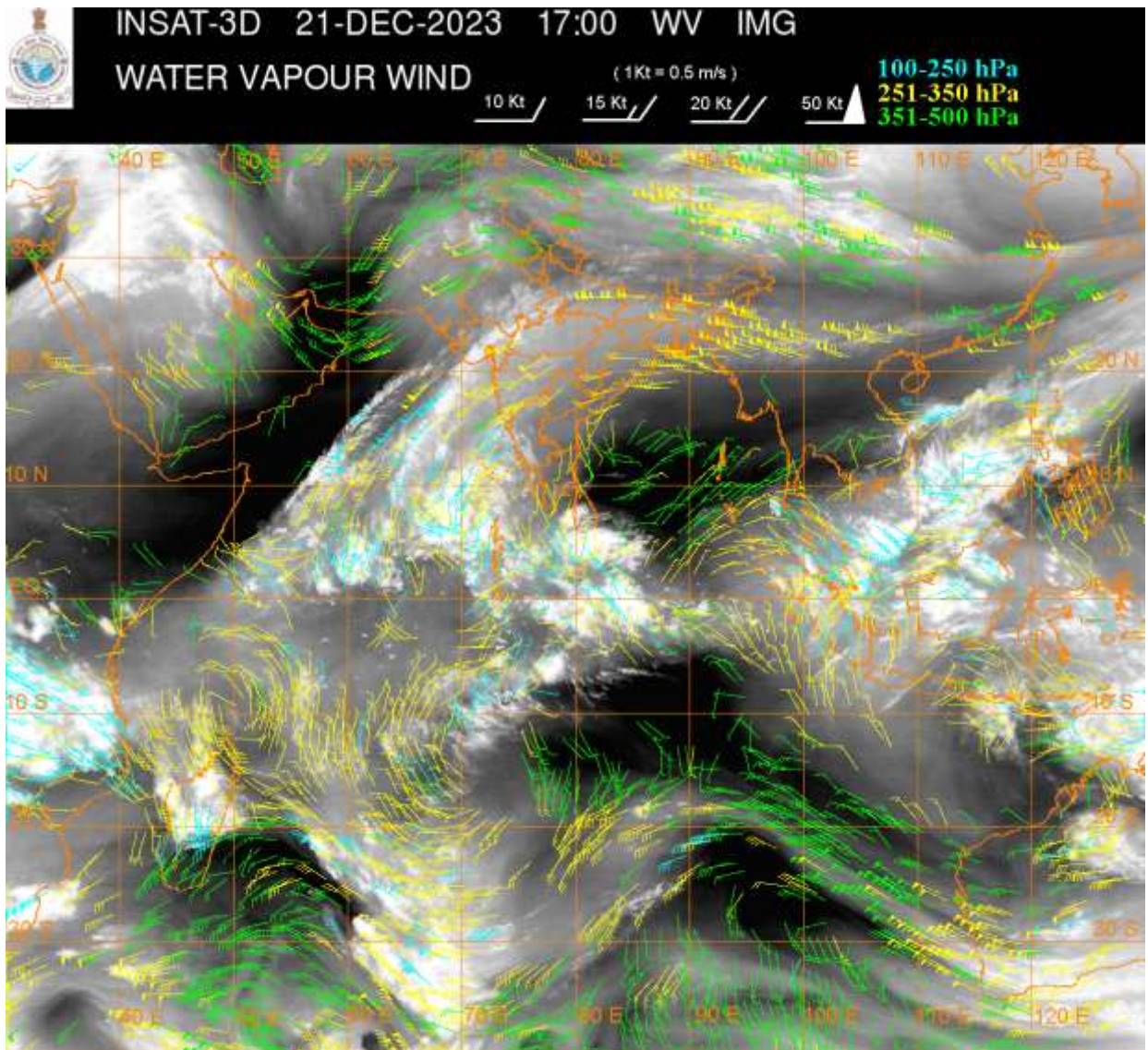
WESTERN DISTURBANCE:-

SCT MULTILAYERED CLOUDS OVER E IRAN ADJ AFGANISTAN AND N/HOOD IN ASSW **WD** OVER THE AREA (.)

SCT MULTILAYERED CLOUDS OVER BLACK SEA AND N/HOOD IN ASSW **ANOTHER WD** OVER THE AREA (.)

JETSTREAM:-

WATER VAPOUR WINDS AT 1700 UTC INDICATE JETSTREAM (WESTERLY) RUNNING OVER GUJ S RAJ MP UP BHR JHRKND CHTGH GWB SHWB NE STATES BD AND N/HOOD (.)



CLOUDS DESCRIPTION WITHIN INDIA:-

NORTH:-

SCT LOW/MED CLOUDS WITH EMBDD ISOL WK TO MOD CONVTN OVER LADAKH N HP N UTRKND C UP(.) SCT LOW/MED CLOUDS OVER J&K S HP S UTRKND N PJB S HARY REST UP (.)

EAST:-

SCT LOW/MED CLOUDS WITH EMBDD WK CONVTN OVER NW BHR SKM E MEGHA (.) ISOL TO SCT LOW/MED CLOUDS OVER REST BHR JHRKND N CHTGH N ORS SHWB AND REST NE STATES (.)

WEST:-

SCT TO BKN LOW/MED CLOUDS WITH EMBDD WK TO MOD CONVTN OVER GUJ RAJ W MP MADHYA MAHA NW VID KKN (.)ISOL LOW/MED CLOUDS OVER E MP MRTHWD REST VID & GOA (.)

SOUTH:-

SCT LOW/MED CLOUDS WITH MOD TO INT CONVTN OVER LKSDP ILS AND ISOL WK TO MOD CONVTN OVER KER SE TN COTL KRNTK WEST NIK (.) SCT LOW/MED CLOUDS OVER N COTL AP REST TN ANDAMAN & NICOBAR ILS (.)

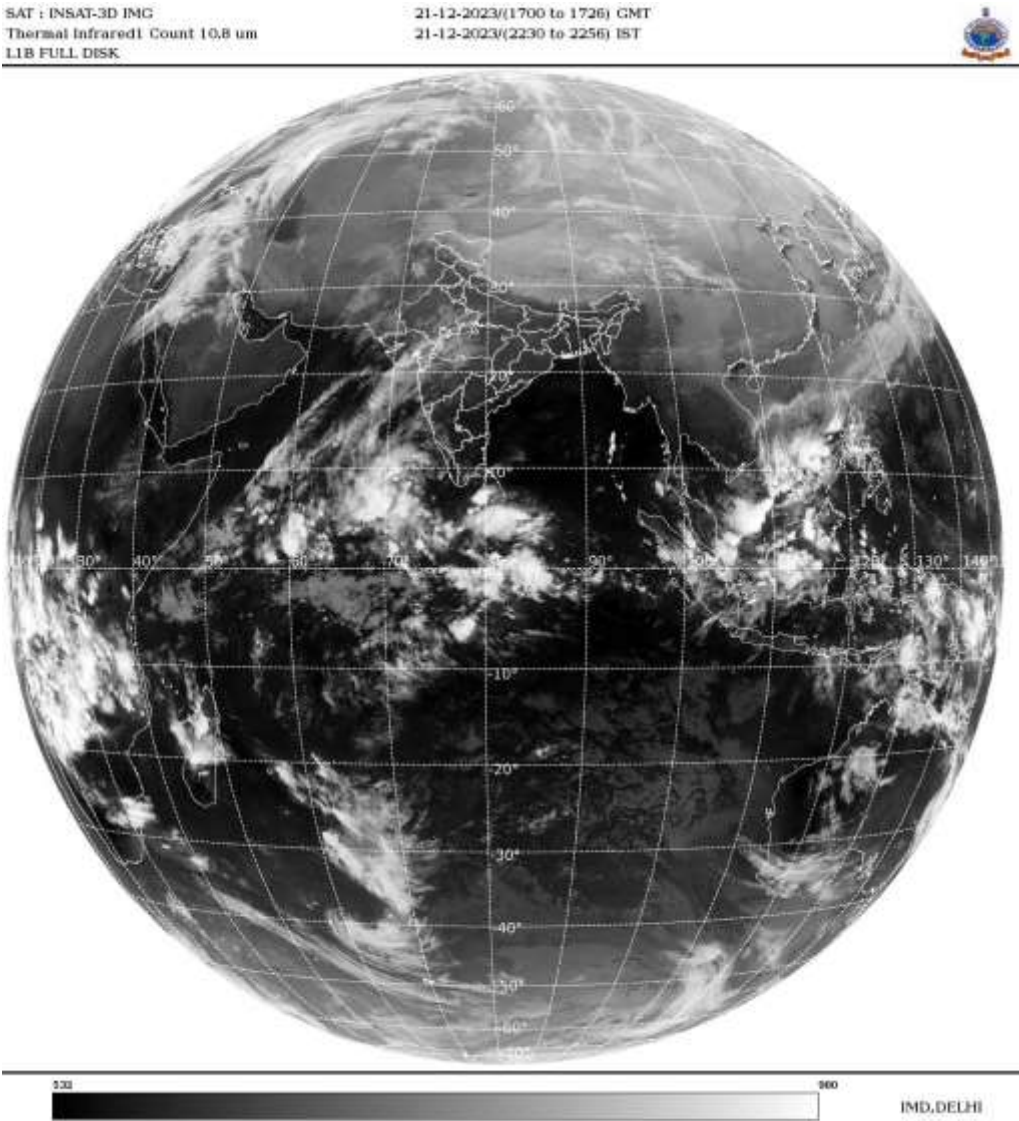
ARABIAN SEA:-

SCT TO BKN LOW/MED CLOUDS WITH EMBDD INT TO V INT CONVTN OVER SE ARSEA (.) SCT LOW/MED CLOUDS WITH EMBDD MOD TO INT CONVTN OVER EC & SW ARSEA COMORIN AREA (.) SCT LOW/MED CLOUDS WITH EMBDD WK TO MOD CONVTN OVER NE ARSEA GULF OF CAMBAY (.)

BAY OF BENGAL & ANDAMAN SEA:-

SCT LOW/MED CLOUDS OVER SOUTH BAY (.)

CLOUDS DESCRIPTION OUTSIDE INDIA:-



SCT TO BKN LOW/MED CLOUDS WITH EMBDD MOD TO INT CONVTN OVER TIBET GULF OF MANNAR SRI LANKA MALDIVES SUMATRA JAVA ILS STR OF MALACCA BORNEO SOUTH CHINA SEA CELEBES ILS & SEA PHILIPPINES SULU SEA MADAGASCAR N MOZAMBIQUE CHANNEL AND OVER INDIAN OCEAN BET LAT 5.0N TO 13.0S LONG 43.0E TO 100.0E (.)

TOO 21/2340 HRS IST=

NNNN

LEGEND:-

REGION	NORTH	J&K HP PJB HARY DLH UP UTRKND
	EAST	BHR JHRKND CHTGH ORS WB SKM NORTH- EAST STATES
	WEST	RAJ MP GUJ MAHA GOA
	SOUTH	TLNGN AP KRNTK KER TN LKSDP ANDAMAN & NICOBAR ILS
CLOUD DISTRIBUTION	ISOL	ISOLATED (LESS THAN 25%)
	SCT	SCATTERED (25 TO 50%)
	BKN	BROKEN (51 TO 75%)
	SLD	SOLID (GREATER THAN 75%)
CLOUDS TOP TEMPERATURE	CTT	CLOUD TOP TEMPERATURE

CONVECTION	WK CONVTN	WEAK CONVECTION (CTT GREATER THAN –25□C)
	MOD CONVTN	MODERATE CONVECTION (CTT BETWEEN -25□C TO -40□C)
	INT CONVTN	INTENSE CONVECTION (CTT BETWEEN -41□C TO -70□C)
	V INT CONVTN	VERY INTENSE CONVECTION (CTT LESS THAN -70□C)
METEOROLOGICAL SUB- DIVISIONS, STATES & UNION TERITORIES	ARUPR	ARUNACHAL PRADESH
	BHR	BIHAR
	CHTGH	CHHATTISGARH
	COTL AP	COASTAL ANDHRA PRADESH
	COTL KRNTK	COASTAL KARNATAKA
	COTL ORS	COASTAL ORISSA
	GUJ	GUJARAT
	GWB	GANGETIC WEST BENGAL
	HARY	HARYANA
	DLH	DELHI
	HP	HIMACHAL PRADESH
	J&K	JAMMU AND KASHMIR
	JHRKND	JHARKHAND
	KER	KERALA
	KKN	KONKAN
	LKSDP	LAKSHADWEEP
	M MAHA	MADHYA MAHARASHTRA
	MAHA	MAHARASHTRA
	MANI	MANIPUR
	MEGHA	MEGHALAYA
	MIZO	MIZORAM
	MP	MADHYA PRADESH
	MRTHWD	MARATHWADA
	NAGA	NAGALAND
	N COTL AP	NORTH COASTAL ANDHRA PRADESH
	NIK	NORTH INTERIOR KARNATAKA
	ORS	ORISSA
	PJB	PUNJAB
	RAJ	RAJASTHAN
	RYLSM	RAYALASEEMA
	SAU & KUTCH	SAURASHTRA & KUTCH
	SHWB	SUB-HIMALAYAN WEST BENGAL
	SIK	SOUTH INTERIOR KARNATAKA
	SKM	SIKKIM
	TLNGN	TELANGANA
	TN	TAMIL NADU
	TRP	TRIPURA
	UP	UTTAR PRADESH
	UTRKND	UTTARAKHAND
	VID	VIDHARBHA

	SHWB	SUB HIMALAYAN WEST BENGAL
	GWB	GANGETIC WEST BENGAL
	ARSEA	ARABIAN SEA
	ILS	ISLANDS
MISCELLANEOUS	ASSW	IN ASSOCIATION WITH
	ASSTD	ASSOCIATED
	LLC	LOW LEVEL CIRCULATION
	EMBDD	EMBEDDED
	N/HOOD	NEIGHBOURHOOD
	EXT	EXTREME