



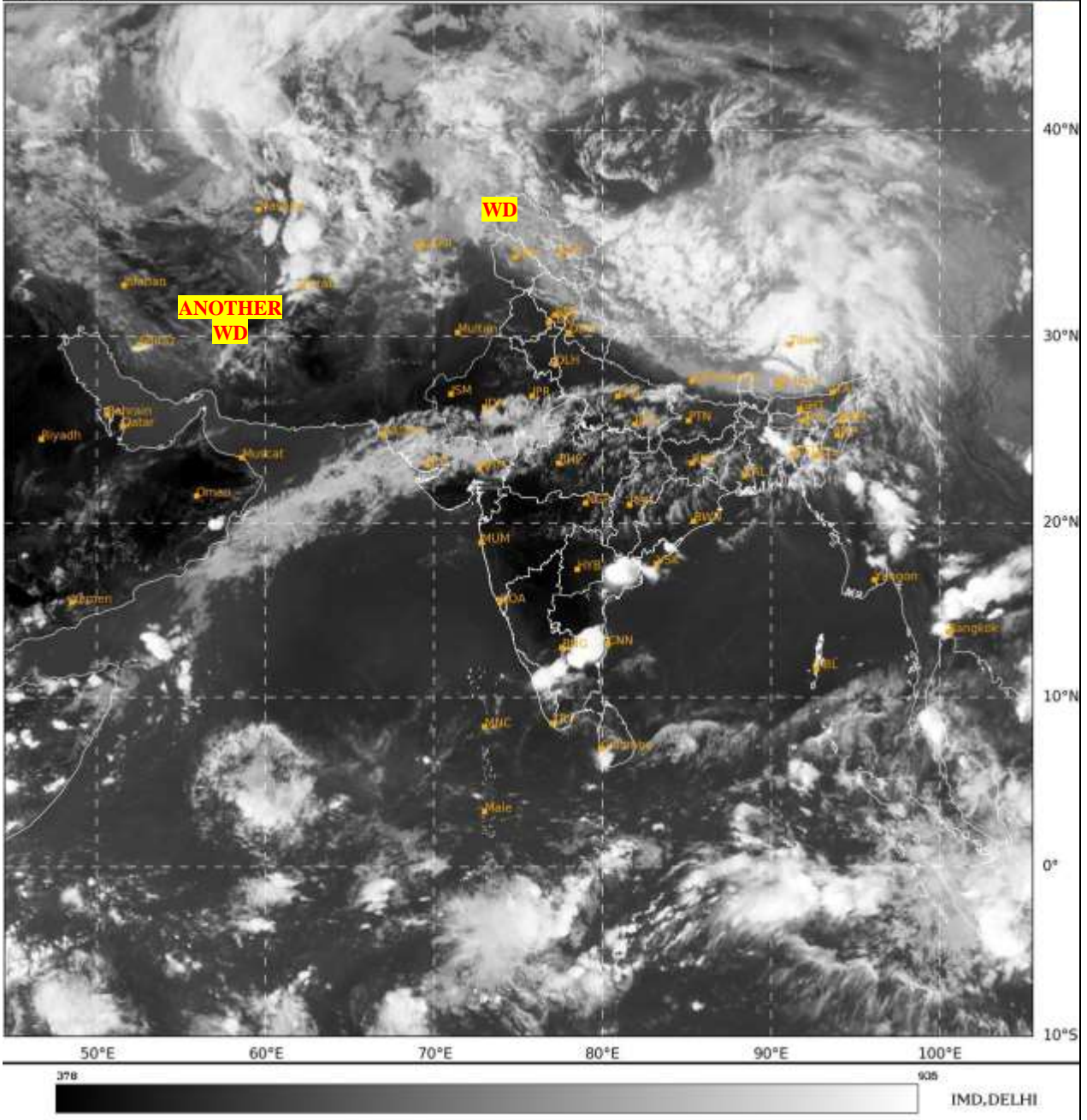
भारत मौसम विज्ञान विभाग  
पृथ्वी विज्ञान मंत्रालय  
India Meteorological Department  
Ministry of Earth Sciences



**SATELLITE BULLETIN BASED ON SATELLITE  
IMAGERIES AND PRODUCTS**  
**04.05.2024 TIME 1200 UTC**

SAT : INSAT-3D IMG  
IMG\_TIR1 10.8 um  
LIC Mercator

04-05-2024/(1200 to 1226) GMT  
04-05-2024/(1730 to 1756) IST



TCIN50 DEMS 041200

SATELLITE BULLETIN BASED ON INSAT-3D PIC OF 041200 UTC (.)

REGION COVERED BETWEEN LAT 50.0°N TO 35.0°S AND LONG 30.0°E TO 125.0°E (.)

**SALIENT FEATURES:-**

**WESTERN DISTURBANCE:-**

SCT MULTILAYERED CLOUDS OVER E AFGAN N PAK LADAKH J&K HP PJB UTRKND TIBET  
ADJ CHINA IN ASSW **WD** OVER THE AREA (.)

SCT MULTILAYERED CLOUDS OVER IRAN AND N/HOOD IN ASSW **ANOTHER WD** OVER THE  
AREA (.)

**THUNDERSTORM/CONVECTIVE ACTIVITY:-**

INTENSE TO VERY INTENSE CONVECTIVE / THUNDERSTORM ACTIVITY OBSERVED OVER N  
AP (MINIMUM **CTT MINUS 93 DEG CEL**) SOUTH RAYALASEMA N TN N KERALA (MINIMUM  
**CTT MINUS 85 DEG CEL**) (.)





INSAT-3D 04-MAY-2024 12:00 WV IMG

WATER VAPOUR WIND

(1Kt = 0.5 m/s)

10 Kt

15 Kt

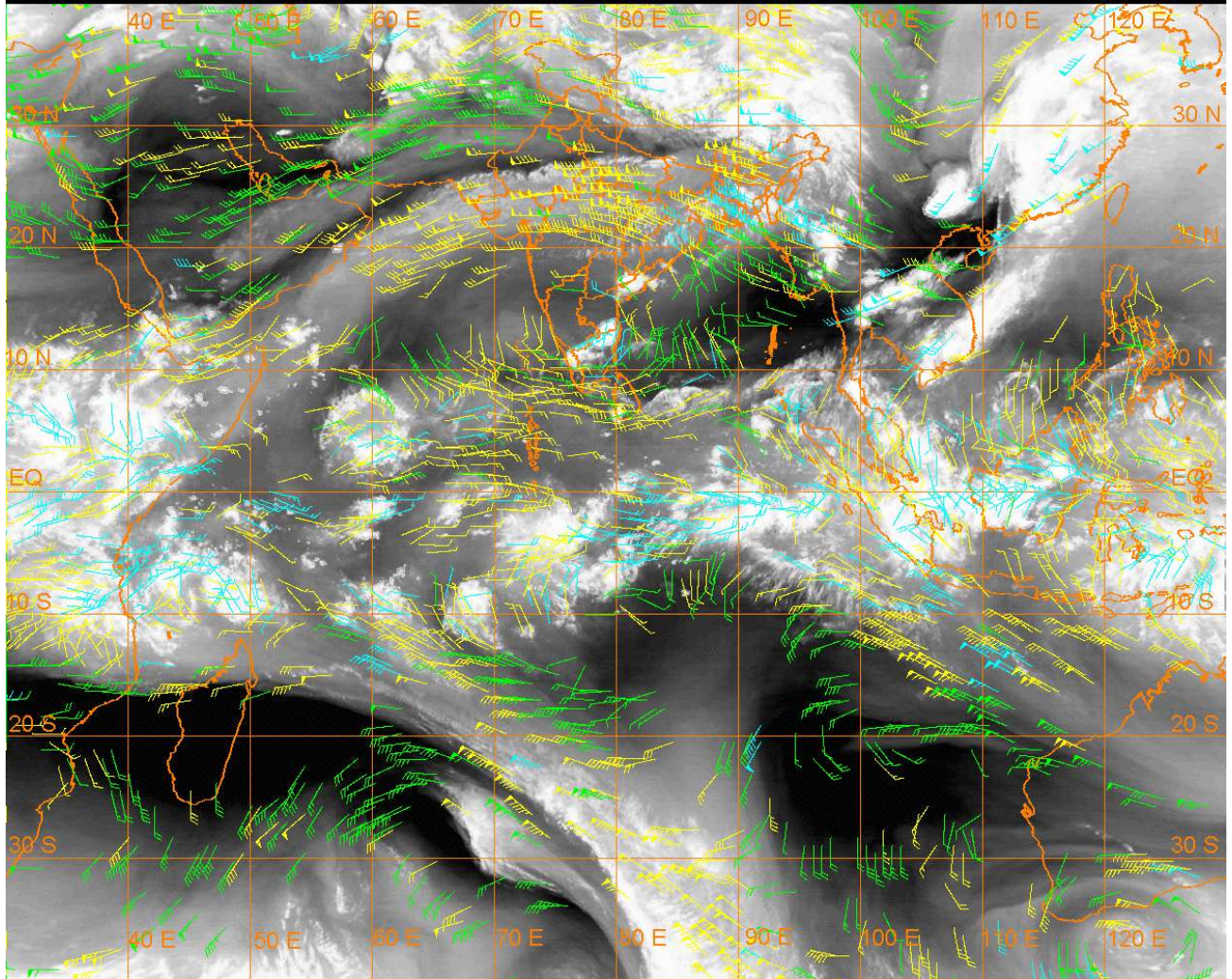
20 Kt

50 Kt

100-250 hPa

251-350 hPa

351-500 hPa



**CLOUDS DESCRIPTION WITHIN INDIA:-**

**NORTH:-**

SCT LOW/MED CLOUDS WITH EMBDD MOD TO INT CONVTN OVER HP N UTRKND E UP AND WK TO MOD CONVTN OVER E LADAKH J&K (.) SCT LOW/MED CLOUDS OVER S UTRKND PJB W UP HARY (.)

**EAST:-**

SCT LOW/MED CLOUDS WITH EMBDD MOD TO INT CONVTN OVER E MEGHA E ARUPR NE ASSAM NAGA (.) SCT LOW/MED CLOUDS WITH EMBDD ISOL WK TO MOD CONVTN OVER W BHR CHTGH JHRKND GWB SHWB SKM REST NE STATES (.) SCT LOW/MED CLOUDS OVER REST BHR ORS (.)

**WEST:-**

SCT LOW/MED CLOUDS WITH EMBDD WK TO MOD CONVTN OVER RAJ MP N GUJ NORTH MADHYA MAHA VID (.) SCT LOW/MED CLOUDS OVER GOA (.)

**SOUTH:-**

SCT LOW/MED CLOUDS WITH EMBDD INT TO V INT CONVTN OVER N TN S RYLSM COTL AP SE TLNGN N KER (.) SCT LOW/MED CLOUDS WITH EMBDD ISOL WK TO MOD CONVTN OVER REST TN S KER AREA NICOBAR ILS (.) ISOL TO SCT LOW/MED CLOUDS OVER LKSDP ILS ANDAMAN ILS (.)

**ARABIAN SEA:-**

SCT LOW/MED CLOUDS WITH EMBDD INT TO V INT CONVTN OVER WC ARSEA (.) SCT LOW/MED CLOUDS WITH EMBDD WK TO MOD CONVTN OVER SW ARSEA ADJ EQUATORIAL INDIAN OCEAN BET LAT 3.0N TO 8.0N LONG 58.0E TO 64.0E NORTH ARSEA GULF OF KUTCH REST SOUTH ARSEA LKSDP ILS AREA & COMORIN AREA (.)

**BAY OF BENGAL & ANDAMAN SEA:-**

SCT LOW/MED CLOUDS WITH EMBDD MOD TO INT CONVTN OVER SOUTH BAY ADJ

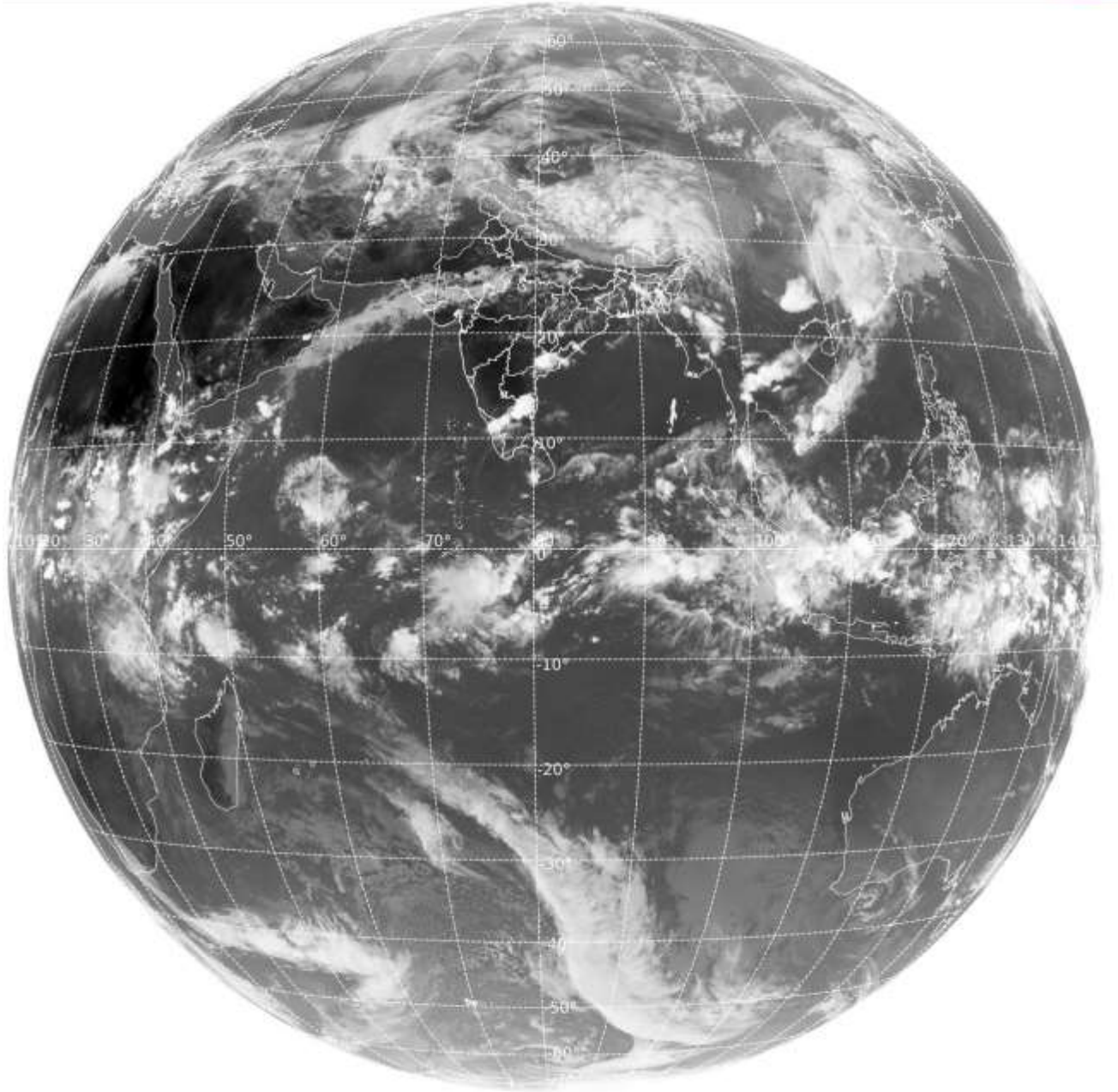


**EQUATORIAL INDIAN OCEAN AND ANDAMAN SEA (.)**

**CLOUDS DESCRIPTION OUTSIDE INDIA:-**

SAT : INSAT-3D IMG  
Thermal Infrared1 Count 10.8 um  
LIB FULL DISK

04-05-2024/(1200 to 1226) GMT  
04-05-2024/(1730 to 1756) IST



IMD, DELHI

**VORTEX (HIDAYA) OVER SOUTH INDIAN OCEAN:-**

SCT LOW/MED CLOUDS WITH EMBDD MOD TO INT CONVTN OVER S SRI LANKA PAK NEPAL BHUTAN TIBET CHINA LAOS YELLOW SEA EAST CHINA SEA MYANMAR THAILAND GULF OF THAILAND CAMBODIA VIETNAM GULF OF TONKIN HAINAN SUMATRA STR OF MALACCA MALAYSIA BORNEO SOUTH CHINA SEA JAVA ILS & SEA CELEBES ILS & SEA PHILIPPINES SULU SEA NORTH MOZAMBIQUE CHANNEL AND OVER INDIAN OCEAN BET LAT 5.0N TO 15.0S LONG 40.0E TO 115.0E AND BET LAT 15.0S TO 35.0S LONG 60.0E TO 90.0E (.)

TOO 04/1815 HRS IST=

NNNN

**LEGEND:-**

|        |       |  |
|--------|-------|--|
| REGION | NORTH | J&K HP PJB HARY DLH UP UTRKND                  |
|        | EAST  | BHR JHRKND CHTGH ORS WB SKM NORTH- EAST STATES |
|        | WEST  | RAJ MP GUJ MAHA GOA                            |

|  |                     |  |                   |
|--|---------------------|--|-------------------|
|  | <b>SOUTH</b>        | <b>TLNGN AP KRNTK KER TN LKSDP<br/>ANDAMAN &amp; NICOBAR ILS</b> |                   |
| <b>CLOUD DISTRIBUTION</b>  | <b>ISOL</b>         | <b>ISOLATED (LESS THAN 25%)</b>                                  |                   |
|  | <b>SCT</b>          | <b>SCATTERED (25 TO 50%)</b>                                     |                   |
|  | <b>BKN</b>          | <b>BROKEN (51 TO 75%)</b>  |                   |
|  | <b>SLD</b>          | <b>SOLID (GREATER THAN 75%)</b>                                  |                   |
| <b>CLOUDS TOP TEMPERATURE</b>  | <b>CTT</b>          | <b>CLOUD TOP TEMPERATURE</b>                                     |                   |
| <b>CONVECTION</b>  | <b>WK CONVTN</b>    | <b>WEAK CONVECTION<br/>(CTT GREATER THAN -25°C)</b>              |                   |
|  | <b>MOD CONVTN</b>   | <b>MODERATE CONVECTION<br/>(CTT BETWEEN -25°C TO -40°C)</b>      |                   |
|  | <b>INT CONVTN</b>   | <b>INTENSE CONVECTION<br/>(CTT BETWEEN -41°C TO -70°C)</b>       |                   |
|  | <b>V INT CONVTN</b> | <b>VERY INTENSE CONVECTION<br/>(CTT LESS THAN -70°C)</b>         |                   |
| <b>METEOROLOGICAL<br/>SUB- DIVISIONS,<br/>STATES &amp; UNION<br/>TERRITORIES</b> | <b>ARUPR</b>        | <b>ARUNACHAL PRADESH</b>   |                   |
|  | <b>BHR</b>          | <b>BIHAR</b>   |                   |
|  | <b>CHTGH</b>        | <b>CHHATTISGARH</b>  |                   |
|  | <b>COTL AP</b>      | <b>COASTAL ANDHRA PRADESH</b>                                    |                   |
|  | <b>COTL KRNTK</b>   | <b>COASTAL KARNATAKA</b>   |                   |
|  | <b>COTL ORS</b>     | <b>COASTAL ORISSA</b>  |                   |
|  | <b>GUJ</b>          | <b>GUJARAT</b>   |                   |
|  | <b>GWB</b>          | <b>GANGETIC WEST BENGAL</b>                                      |                   |
|  | <b>HARY</b>         | <b>HARYANA</b>   |                   |
|  | <b>DLH</b>          | <b>DELHI</b>   |                   |
|  | <b>HP</b>           | <b>HIMACHAL PRADESH</b>  |                   |
|  | <b>J&amp;K</b>      | <b>JAMMU AND KASHMIR</b>   |                   |
|  | <b>JHRKND</b>       | <b>JHARKHAND</b>   |                   |
|  | <b>KER</b>          | <b>KERALA</b>  |                   |
|  | <b>KKN</b>          | <b>KONKAN</b>  |                   |
|  | <b>LKSDP</b>        | <b>LAKSHADWEEP</b>   |                   |
|  | <b>M MAHA</b>       | <b>MADHYA MAHARASHTRA</b>  |                   |
|  | <b>MAHA</b>         | <b>MAHARASHTRA</b>   |                   |
|  | <b>MANI</b>         | <b>MANIPUR</b>   |                   |
|  | <b>MEGHA</b>        | <b>MEGHALAYA</b>   |                   |
|  | <b>MIZO</b>         | <b>MIZORAM</b>   |                   |
|  | <b>MP</b>           | <b>MADHYA PRADESH</b>  |                   |
|  |                     | <b>MRTHWD</b>  | <b>MARATHWADA</b> |
|  |                     | <b>NAGA</b>  | <b>NAGALAND</b>   |
| <b>N COTL AP</b>   |                     | <b>NORTH COASTAL ANDHRA<br/>PRADESH</b>                          |                   |
| <b>NIK</b>   |                     | <b>NORTH INTERIOR KARNATAKA</b>                                  |                   |
| <b>ORS</b>   |                     | <b>ORISSA</b>  |                   |
| <b>PJB</b>   |                     | <b>PUNJAB</b>  |                   |
| <b>RAJ</b>   |                     | <b>RAJASTHAN</b>   |                   |
| <b>RYLSM</b>   |                     | <b>RAYALASEEMA</b>   |                   |
| <b>SAU &amp; KUTCH</b>   |                     | <b>SAURASHTRA &amp; KUTCH</b>                                    |                   |
|  | <b>SHWB</b>         | <b>SUB-HIMALAYAN WEST BENGAL</b>                                 |                   |

|                      |               |                                  |
|----------------------|---------------|----------------------------------|
|                      | <b>SIK</b>    | <b>SOUTH INTERIOR KARNATAKA</b>  |
|                      | <b>SKM</b>    | <b>SIKKIM</b>                    |
|                      | <b>TLNGN</b>  | <b>TELANGANA</b>                 |
|                      | <b>TN</b>     | <b>TAMIL NADU</b>                |
|                      | <b>TRP</b>    | <b>TRIPURA</b>                   |
|                      | <b>UP</b>     | <b>UTTAR PRADESH</b>             |
|                      | <b>UTRKND</b> | <b>UTTARAKHAND</b>               |
|                      | <b>VID</b>    | <b>VIDHARBHA</b>                 |
|                      | <b>SHWB</b>   | <b>SUB HIMALAYAN WEST BENGAL</b> |
|                      | <b>GWB</b>    | <b>GANGETIC WEST BENGAL</b>      |
|                      | <b>ARSEA</b>  | <b>ARABIAN SEA</b>               |
|                      | <b>ILS</b>    | <b>ISLANDS</b>                   |
| <b>MISCELLANEOUS</b> | <b>ASSW</b>   | <b>IN ASSOCIATION WITH</b>       |
|                      | <b>ASSTD</b>  | <b>ASSOCIATED</b>                |
|                      | <b>LLC</b>    | <b>LOW LEVEL CIRCULATION</b>     |
|                      | <b>EMBDD</b>  | <b>EMBEDDED</b>                  |
|                      | <b>N/HOOD</b> | <b>NEIGHBOURHOOD</b>             |
|                      | <b>EXT</b>    | <b>EXTREME</b>                   |