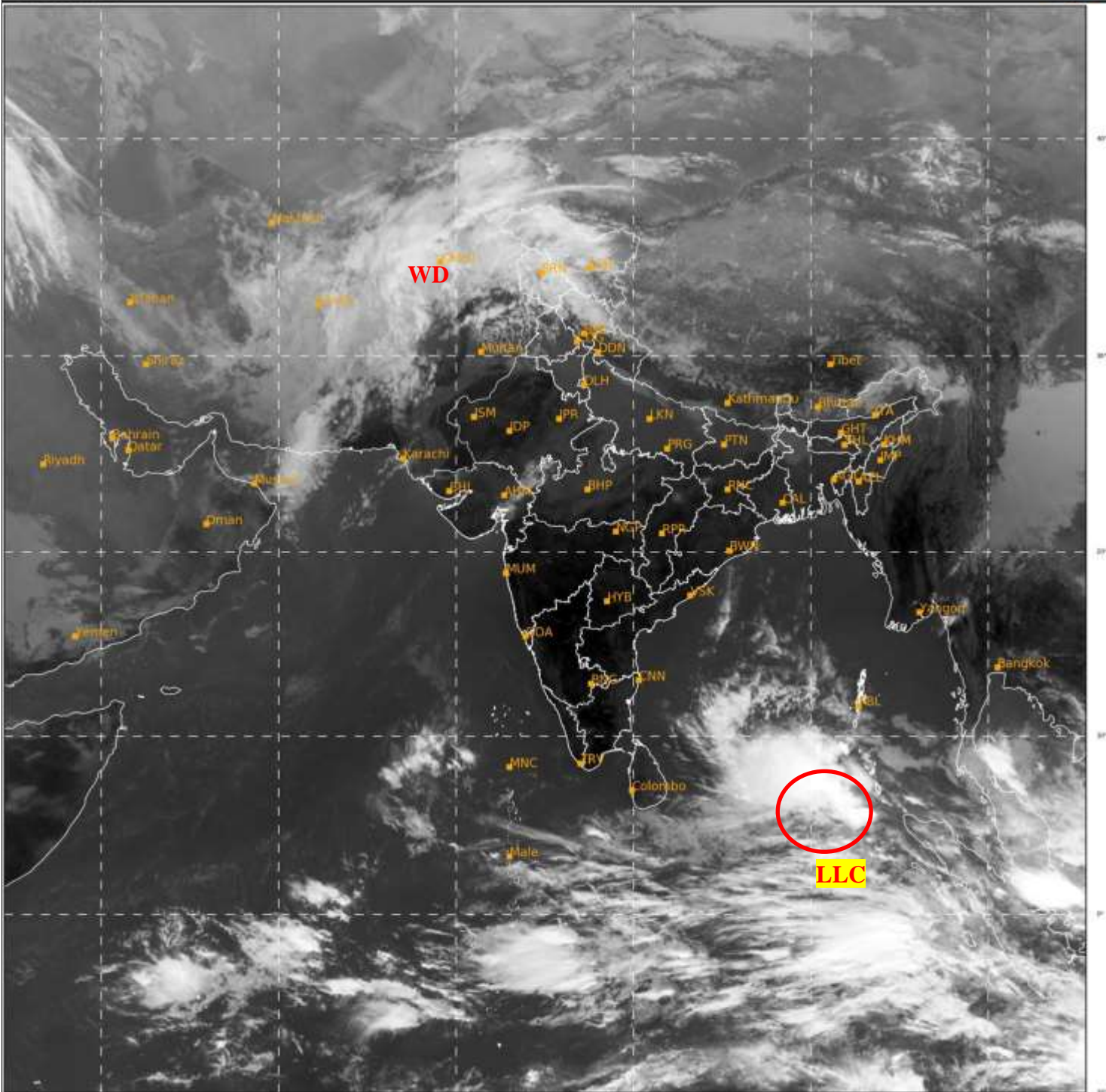




**SATELLITE BULLETIN BASED ON SATELLITE
IMAGERIES AND PRODUCTS**
28.01.2023 TIME 0600 UTC

SAT : INSAT-3D IMG
IMG_TIR1 10.8 um
LIC Mercator

28-01-2023/(0600 to 0626) GMT
28-01-2023/(1130 to 1156) IST



427

941

IMD, DELHI

TCIN50 DEMS 280600

SATELLITE BULLETIN BASED ON INSAT-3D PIC OF 280600 UTC (.)

REGION COVERED BETWEEN LAT 50.0°N TO 35.0°S AND LONG 40.0°E TO 125.0°E (.)

SALIENT FEATURES:-

LLC OVER SOUTH-EAST BAY ADJ EQUATORIAL INDIAN OCEAN:-

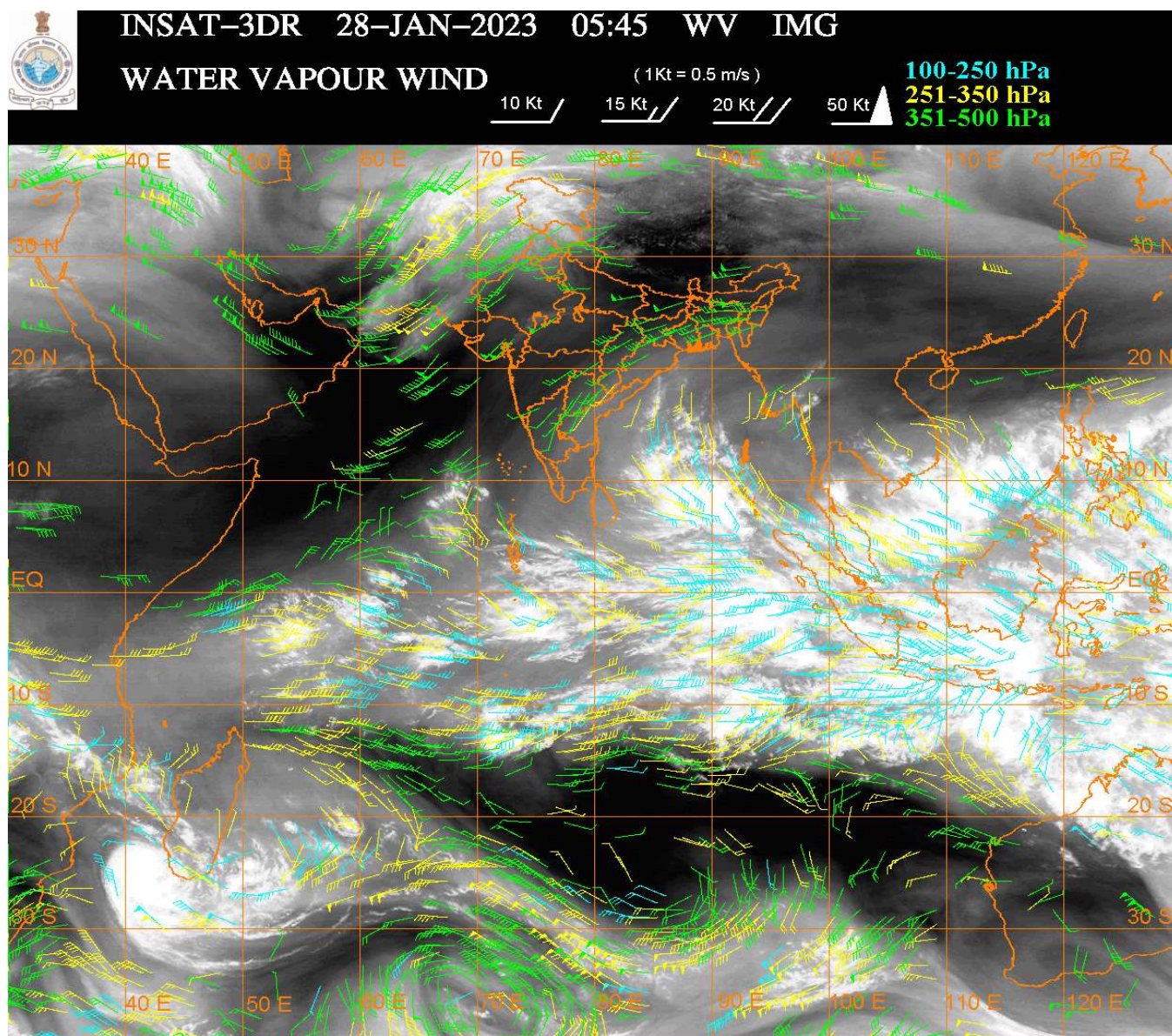
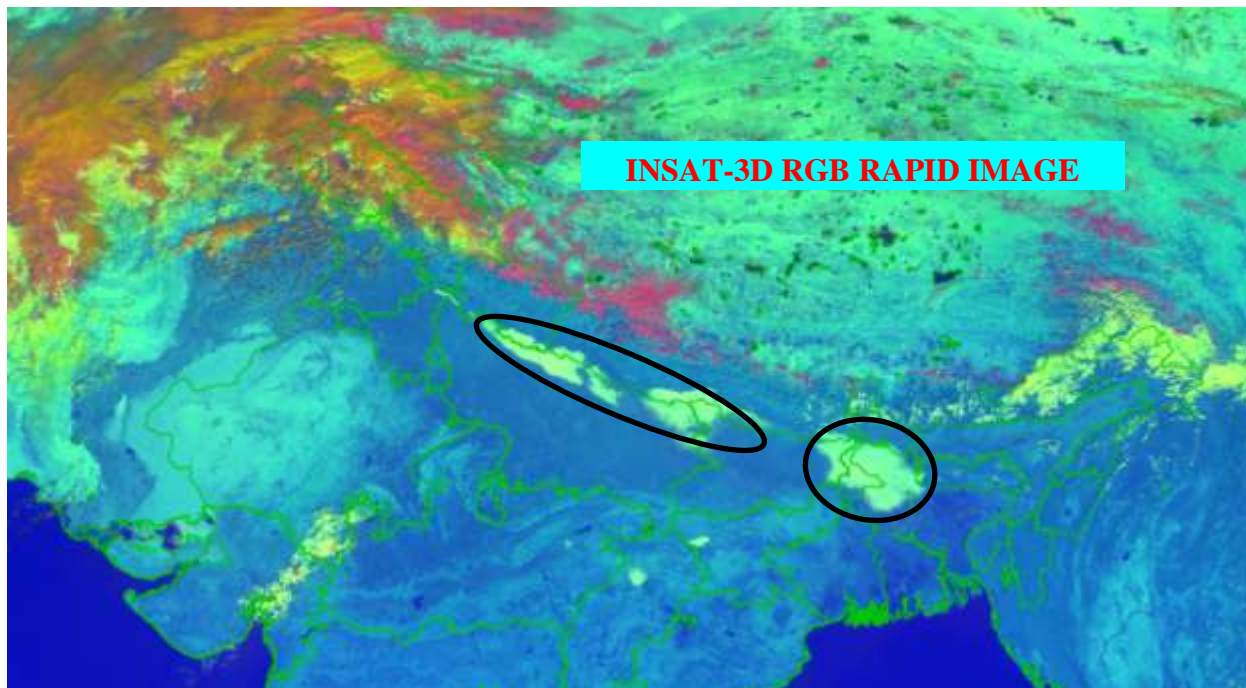
SCT TO BKN LOW/MED CLOUDS WITH EMBDD INTENSE TO VERY INTENSE CONVECTION OVER SOUTH EAST BAY ADJ EQUATORIAL INDIAN BET LAT 4.0N TO 10.0N LONG 87.0E TO 93.0E IN ASSW **LLC** OVER THE AREA (.) CONVECTION HAS SLIGHTLY CONCENTRATED DURING LAST 06 HRS (.) MINIMUM CTT **MINUS 93** DEGREE CEL (.)

WESTERN DISTURBANCE (WD):-

SCT MULTILAYERED CLOUDS OVER AFGAN PAK LADAKH J&K HP PJB IN ASSW **WD** OVER THE AREA (.)

FOG / LOW CLOUDS:-

DAY MICROPHYSICS IMAGERY OF INSAT-3D (RAPID) AT 0600 UTC INDICATES SCT FOG / LOW CLOUDS OVER EXTREME SE UTRKND EXTREME N UP N BHR SHWB ADJ NW BD (.)



CLOUDS DESCRIPTION WITHIN INDIA:-

NORTH:-

SCT LOW/MED CLOUDS WITH EMBDD MOD TO INT CONVTN OVER LADAKH J&K HP AND ISOL WK TO MOD CONVTN OVER PJB N UTRKND (.) ISOL LOW/MED CLOUDS OVER S PJB (.)

EAST:-

SCT LOW/MED CLOUDS WITH EMBDD WK CONV TN OVER SKM ARUPR (.) SCT LOW/MED CLOUDS OVER ASSAM MEGHA NAGA (.)

WEST:-

SCT LOW/MED CLOUDS WITH EMBDD ISOL WK CONV TN OVER SE RAJ ADJ W MP E GUJ (.) ISOL LOW/MED CLOUDS OVER NE MP (.)

SOUTH:-

SCT LOW/MED CLOUDS WITH EMBDD MOD TO INT CONV TN OVER ANDAMAN & NICOBAR (.) ISOL TO SCT LOW/MED CLOUDS OVER TN LKSDP ILS (.)

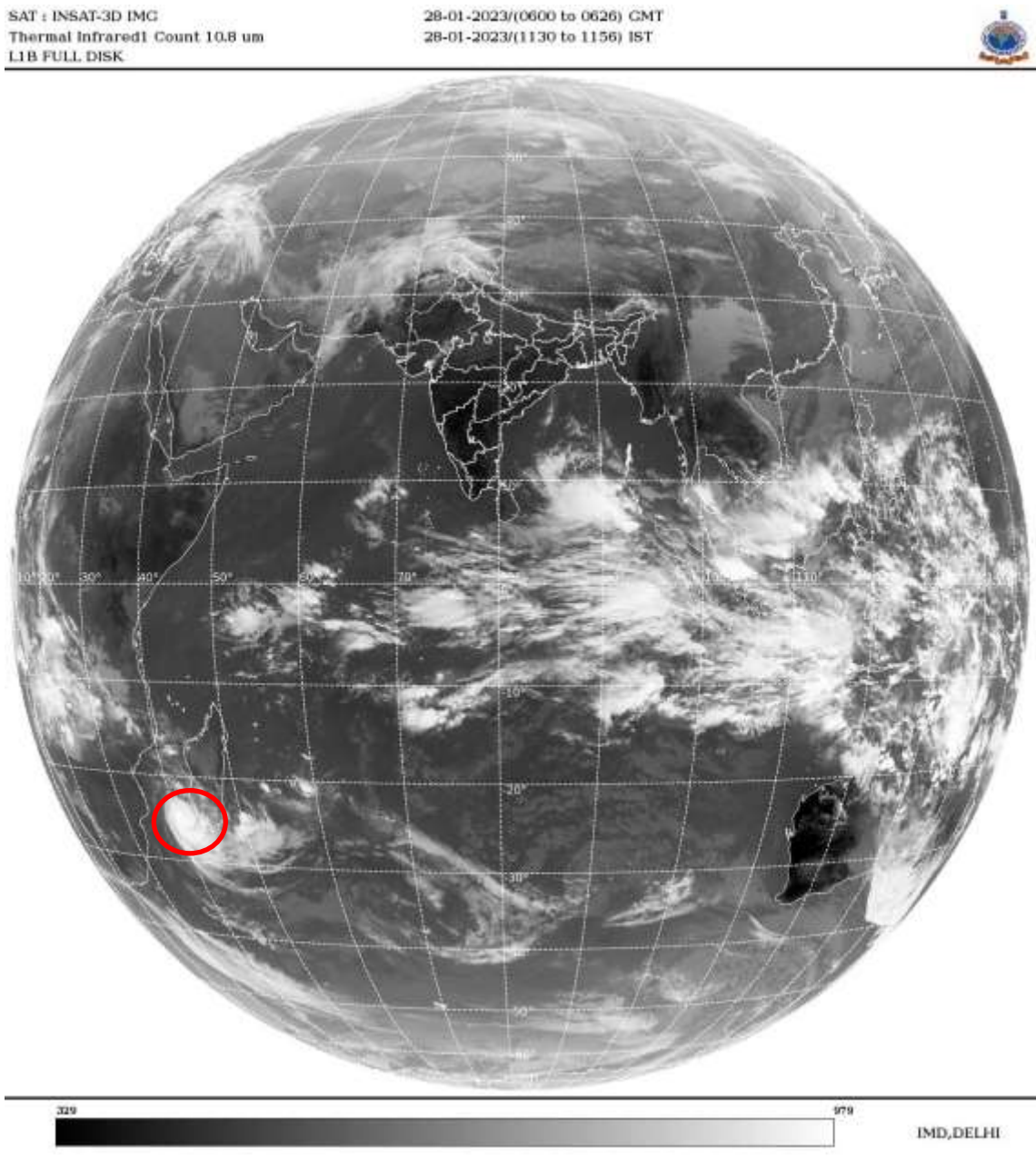
ARABIAN SEA:-

SCT LOW/MED CLOUDS WITH EMBDD ISOL MOD TO INT CONV TN OVER SE ARSEA AND ISOL WK TO MOD CONV TN OVER NW ARSEA (.)

BAY OF BENGAL & ANDAMAN SEA:-

SCT TO BKN LOW/MED CLOUDS WITH EMBDD INT TO V INT CONV TN OVER SE BAY (.) SCT LOW/MED CLOUDS WITH EMBDD MOD TO INT CONV TN OVER SW BAY S ANDAMAN SEA AND ISOL WK TO MOD CONV TN OVER C BAY (.)

CLOUDS DESCRIPTION OUTSIDE INDIA:-



VORTEX (CHENESO) OVER SOUTH MOZAMBIQUE CHANNEL:-

VORTEX (**CHENESO**) OVER SOUTH MOZAMBIQUE CHANNEL (**AREA-D75**) CENTERED NEAR **24.8S / 41.8E** (.) INTENSITY **T5.0/5.0** (.) CORRESPONDING MAXIMUM SUSTAINED WINDS OF **90-119 KTS** (.) ASSTD BKN LOW/MED CLOUDS WITH EMBDD INT TO V INT CONV TN OVER S MOZAMBIQUE CHANNEL & S MADAGASCAR (.)

SCT LOW/MED CLOUDS WITH EMBDD MOD TO INT CONVTN OVER MALDIVES THAILAND GULF OF THAILAND SUMATRA STR OF MALACCA MALAYSIA BORNEO SOUTH CHINA SEA JAVA ILS & SEA CELEBES ILS & SEA PHILIPPINES S MADAGASCAR MOZAMBIQUE CHANNEL AND OVER INDIAN OCEAN BET LAT 5.0N TO 15.0S LONG 50.0E TO 120.0E AND BET LAT 20.0S TO 30.0S LONG 40.0E TO 70.0E (.)

TOO 28/1240 HRS IST=

NNNN

LEGEND:-

REGION	NORTH	J&K HP PJB HARY DLH UP UTRKND
	EAST	BHR JHRKND CHTGH OR WB SKM NORTH- EAST STATES
	WEST	RAJ MP GUJ MAHA GOA
	SOUTH	TLNGN AP KRNTK KER TN LKSDP ANDAMAN & NICOBAR ILS

CLOUD DISTRIBUTION	ISOL	ISOLATED (LESS THAN 25%)
	SCT	SCATTERED (25 TO 50%)
	BKN	BROKEN (51 TO 75%)
	SLD	SOLID (GREATER THAN 75%)
CLOUDS TOP TEMPERATURE	CTT	CLOUD TOP TEMPERATURE
CONVECTION	WK CONVTN	WEAK CONVECTION (CTT GREATER THAN -25°C)
	MOD CONVTN	MODERATE CONVECTION (CTT BETWEEN -25°C TO -40°C)
	INT CONVTN	INTENSE CONVECTION (CTT BETWEEN -41°C TO -70°C)
	V INT CONVTN	VERY INTENSE CONVECTION (CTT LESS THAN -70°C)
METEOROLOGICAL SUB-DIVISIONS, STATES & UNION TERRITORIES	ARUPR	ARUNACHAL PRADESH
	BHR	BIHAR
	CHTGH	CHHATTISGARH
	COTL AP	COASTAL ANDHRA PRADESH
	COTL KRNTK	COASTAL KARNATAKA
	COTL ORS	COASTAL ORISSA
	GUJ	GUJARAT
	GWB	GANGETIC WEST BENGAL
	HARY	HARYANA
	DLH	DELHI
	HP	HIMACHAL PRADESH
	J&K	JAMMU AND KASHMIR
	JHRKND	JHARKHAND
	KER	KERALA
	KKN	KONKAN
	LKSDP	LAKSHADWEEP
M MAHA	MADHYA MAHARASHTRA	

	MAHA	MAHARASHTRA
	MANI	MANIPUR
	MEGHA	MEGHALAYA
	MIZO	MIZORAM
	MP	MADHYA PRADESH
	MRTHWD	MARATHWADA
	NAGA	NAGALAND
	N COTL AP	NORTH COASTAL ANDHRA PRADESH
	NIK	NORTH INTERIOR KARNATAKA
	ORS	ORISSA
	PJB	PUNJAB
	RAJ	RAJASTHAN
	RYLSM	RAYALASEEMA
	SAU & KUTCH	SAURASHTRA & KUTCH
	SHWB	SUB-HIMALAYAN WEST BENGAL
	SIK	SOUTH INTERIOR KARNATAKA
	SKM	SIKKIM
	TLNGN	TELANGANA
	TN	TAMIL NADU
	TRP	TRIPURA
	UP	UTTAR PRADESH
	UTRKND	UTTARAKHAND
	VID	VIDHARBHA
	SHWB	SUB HIMALAYAN WEST BENGAL
	GWB	GANGETIC WEST BENGAL
	ARSEA	ARABIAN SEA
	ILS	ISLANDS
MISCELLANEOUS	ASSW	IN ASSOCIATION WITH
	ASSTD	ASSOCIATED
	LLC	LOW LEVEL CIRCULATION
	EMBDD	EMBEDDED
	N/HOOD	NEIGHBOURHOOD
	EXT	EXTREME