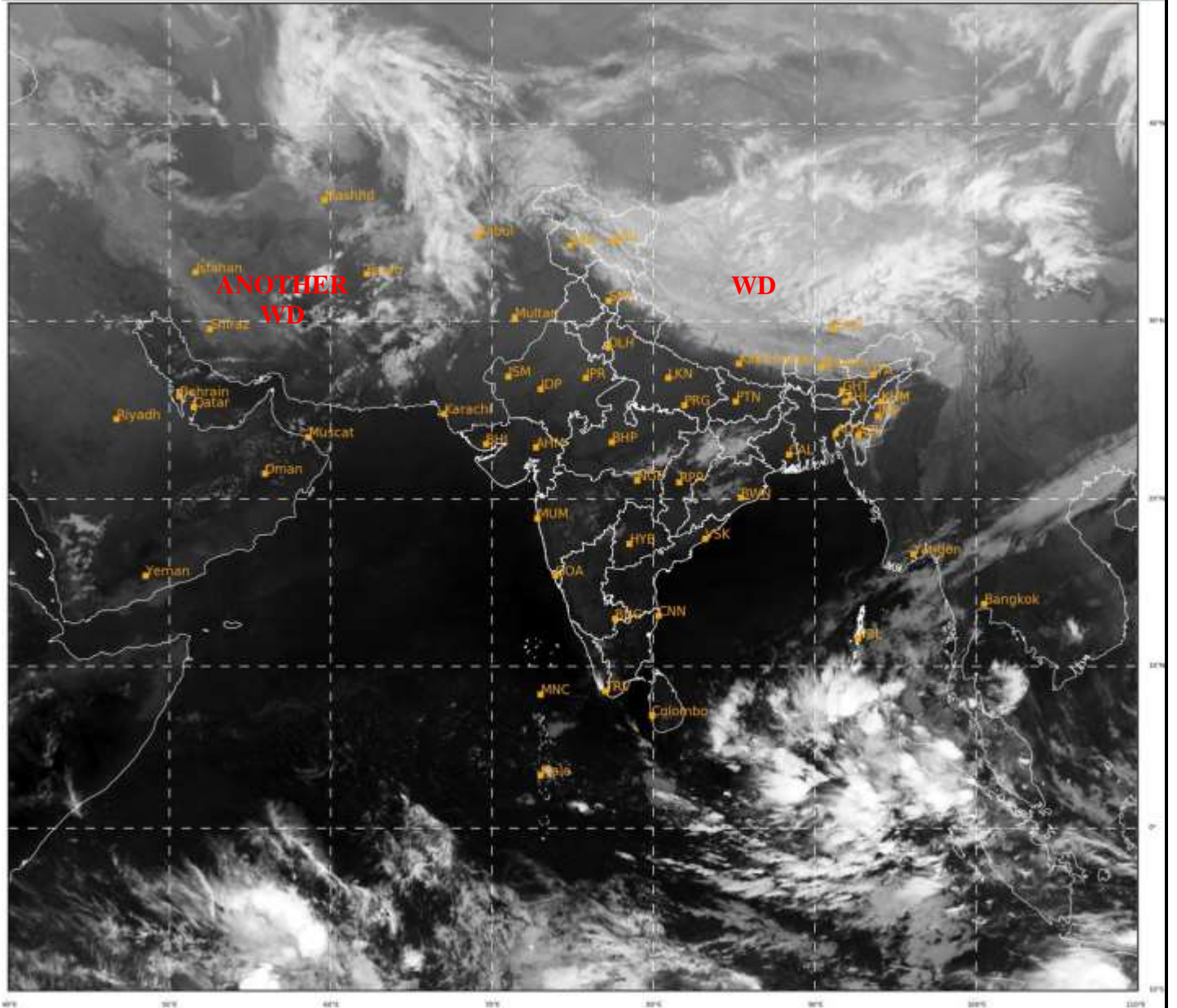




**SATELLITE BULLETIN BASED ON SATELLITE
IMAGERIES AND PRODUCTS**
27.02.2022 TIME 1800 UTC

SAT : INSAT-3D IMG
IMG_TIR1 10.8 um
L1C Mercator

27-02-2022/(1700 to 1726) GMT
27-02-2022/(2230 to 2256) IST



523

937

IMD, DELHI

TCIN50 DEMS 271800

SATELLITE BULLETIN BASED ON INSAT-3D PIC OF 271700 UTC (.)

REGION COVERED BETWEEN LAT 50.0°N TO 30.0°S AND LONG 40.0°E TO 125.0°E (.)

SALIENT FEATURES:-

WESTERN DISTURBANCE (WD):-

SCT MULTILAYERED CLOUDS OVER TIBET ADJ CHINA IN ASSW **WD** OVER THE AREA (.)

SCT MULTILAYERED CLOUDS OVER E IRAN AFGAN ADJ W PAK AND N/HOOD IN ASSW **ANOTHER WD** OVER THE AREA (.)

CONVECTION OVER S ANDAMAN SEA & N/HOOD:-

INTENSE TO VERY INTENSE CONVTN OVER S ANDAMAN SEA SE BAY SOUTH OF LAT 10.0N ADJ EQUATORIAL INDIAN OCEAN PERSISTS (MINIMUM CTT MINUS **93** DEG C) (.) CONVECTION SLIGHTLY MOVED WESTWARDS DURING LAST 06 HRS (.)

INTENSE TO VERY INTENSE CONVTN OBSERVED OVER NICOBAR ILS (MINIMUM CTT MINUS **73** DEG C) (.)



INSAT-3D 27-FEB-2022 17:00 WV IMG

WATER VAPOUR WIND

(1Kt = 0.5 m/s)

10 Kt

15 Kt

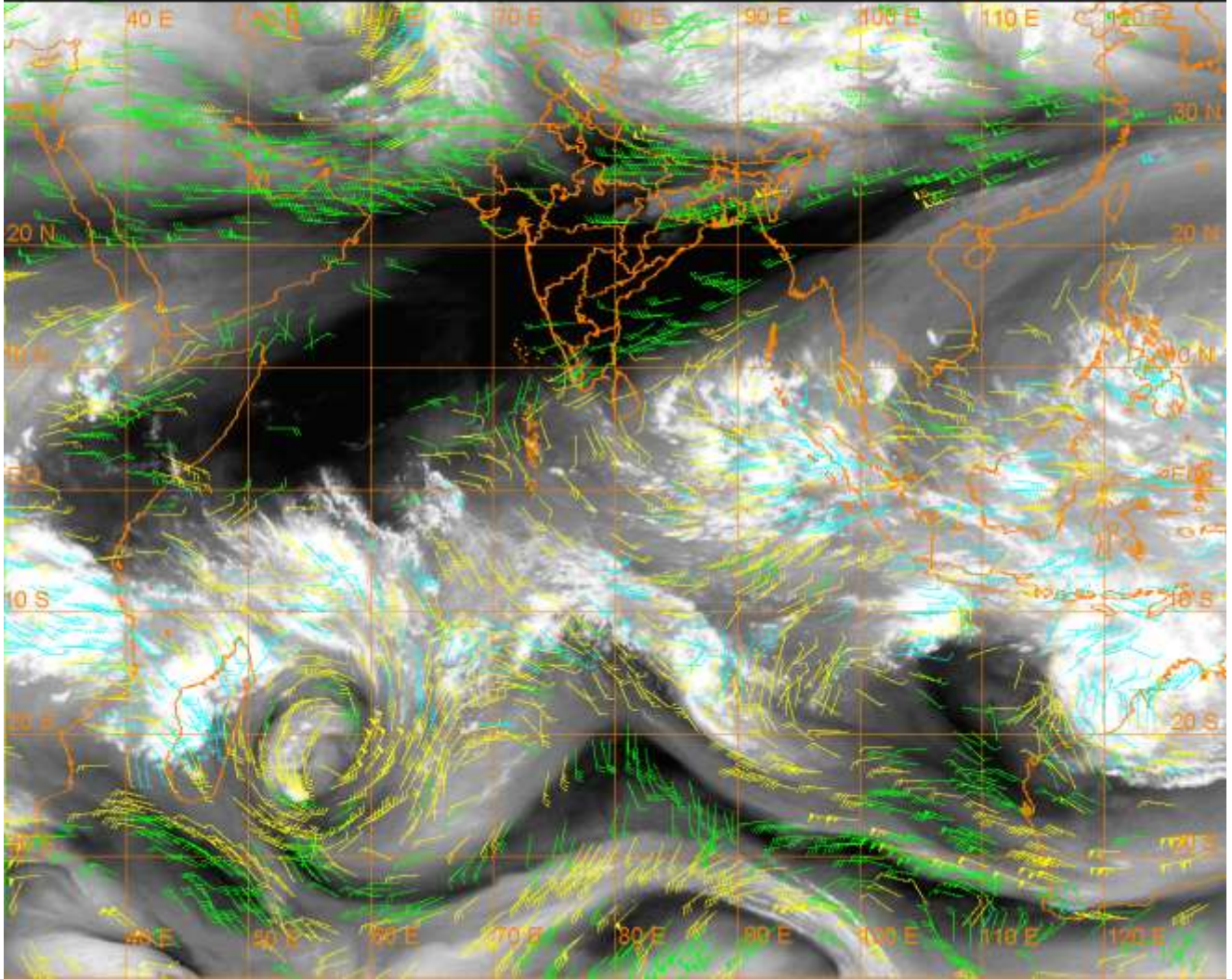
20 Kt

50 Kt

100-250 hPa

251-350 hPa

351-500 hPa



CLOUDS DESCRIPTION WITHIN INDIA:-

NORTH:-

SCT LOW/MED CLOUDS WITH EMBDD ISOL WK TO MOD CONVTN OVER LADAKH J&K N HP N UTRKND EXT SE UP (.) ISOL LOW/MED CLOUDS OVER S HP S UTRKND (.)

EAST:-

SCT LOW/MED CLOUDS WITH EMBDD WK TO MOD CONVTN OVER JHRKND N & EC CHTGH N ORS WC GWB EXT N SHWB SKM NE STATES (.) SCT LOW/MED CLOUDS OVER EXT S BHR REST GWB REST SHWB (.)

WEST:-

SCT LOW/MED CLOUDS WITH EMBDD ISOL WK CONVTN OVER SE MP MRTHWD VID (.) SCT LOW/MED CLOUDS OVER SOUTH MADHYA MAHA (.)

SOUTH:-

SCT TO BKN LOW/MED CLOUDS WITH EMBDD INT TO V INT CONVTN OVER NICOBAR ILS (MINIMUM CTT MINUS 73 DEG) (.) SCT LOW/MED CLOUDS WITH EMBDD MOD TO INT CONVTN OVER S KER AND WK CONVTN OVER N KER NW TN ANDAMAN ILS (.) SCT LOW/MED CLOUDS OVER NE NIK ADJ W TLNGN EXT S SIK REST TN (.)

ARABIAN SEA:-

SCT LOW/MED CLOUDS WITH EMBDD MOD TO INT CONVTN OVER SE ARSEA OFF S KER COAST (.) SCT LOW/MED CLOUDS WITH EMBDD ISOL WK TO MOD CONVTN OVER EXT NW ARSEA REST SOUTH ARSEA AND COMORIN AREA (.)

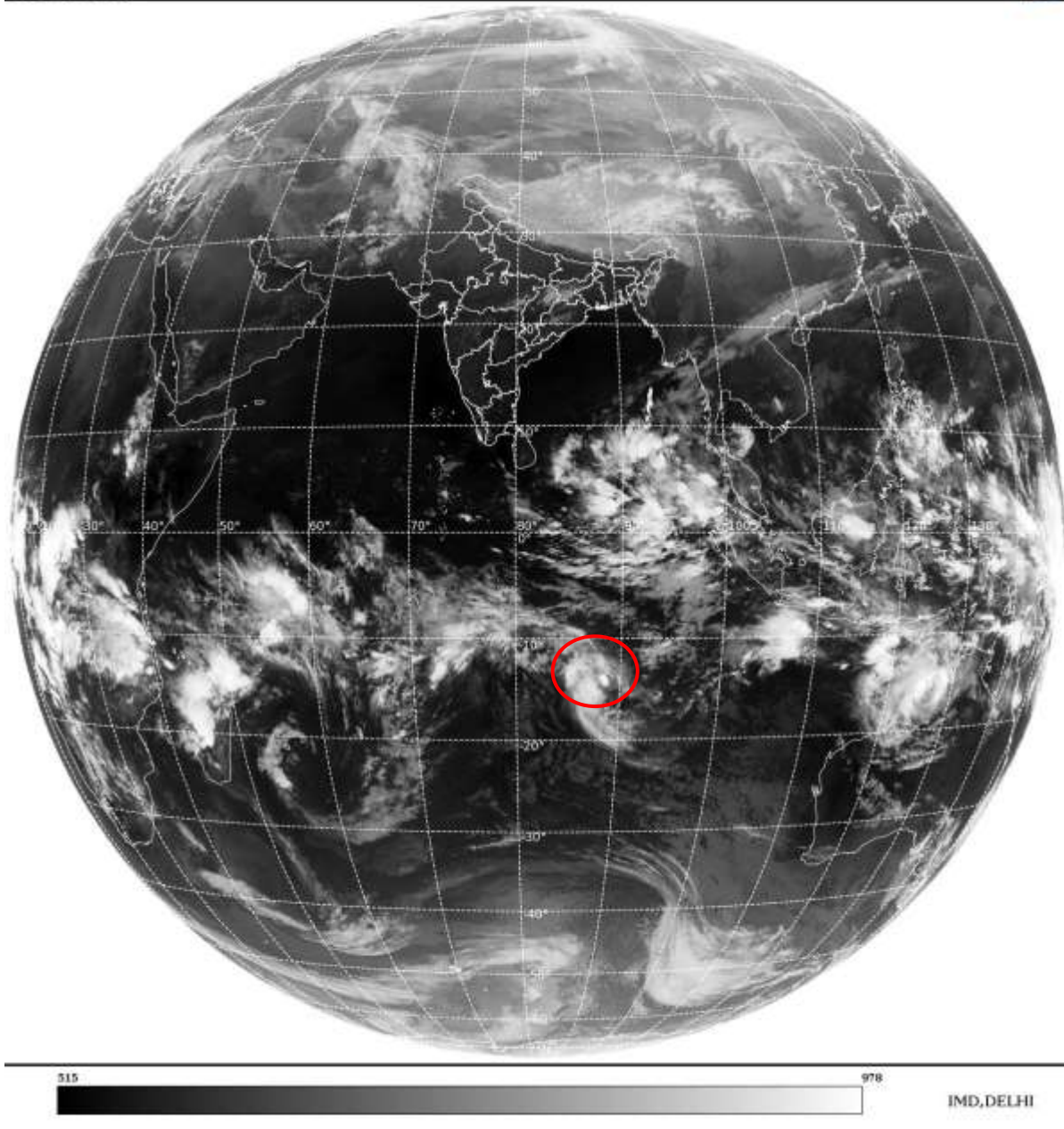
BAY OF BENGAL & ANDAMAN SEA:-

SCT TO BKN LOW/MED CLOUDS WITH EMBDD INT TO V INT CONVTN OVER SOUTH BAY SOUTH OF LAT 10.0N AND S ANDAMAN SEA (MINIMUM CTT MINUS 93 DEG C) (.) SCT LOW/MED CLOUDS WITH EMBDD ISOL WK TO MOD CONVTN OVER EC & REST SE BAY AND N ANDAMAN SEA (.)

CLOUDS DESCRIPTION OUTSIDE INDIA:

SAT : INSAT-3D IMG
Thermal Infrared1 Count 10.8 um
L1B FULL DISK

27-02-2022/(1700 to 1726) GMT
27-02-2022/(2230 to 2256) IST



VORTEX OVER SOUTH INDIAN OCEAN:-

VORTEX (VERNON) OVER SOUTH INDIAN OCEAN CENTERED NEAR 12.5S / 88.2E (.) INTENSITY T3.5/4.0 (.) ASSTD SCT TO BKN LOW/MED CLOUDS WITH EMBDD INT TO V INT CONVTN OVER AREA BET LAT 11.5S TO 19.0S LONG 84.5E TO 90.0E (.)

SCT LOW/MED CLOUDS WITH EMBDD MOD TO INT CONVTN OVER TIBET CHINA YELLOW SEA E CHINA SEA S MYANMAR THAILAND GULF OF THAILAND SE CAMBODIA N LAOS N VIETNAM GULF OF TONKIN SUMATRA STR OF MALACCA MALAYSIA BORNEO S CHINA SEA JAVA ILS & SEA CELEBES ILS & SEA PHILIPPINES SULU SEA MADAGASCAR MOZAMBIQUE CHANNEL AND OVER INDIAN OCEAN BET LAT 3.5N TO 30.0S LONG 50.0E TO 80.0E AND BET LAT 5.0N TO 20.0S LONG 80.0E TO 110.0E (.)

TOO 27/2330 HRS IST=

NNNN

LEGEND:-

REGION	NORTH	J&K HP PJB HARY DLH UP UTRKND
	EAST	BHR JHRKND CHTGH OR WB SKM NORTH- EAST STATES
	WEST	RAJ MP GUJ MAHA GOA
	SOUTH	TLNGN AP KRNTK KER TN LKSDP ANDAMAN & NICOBAR ILS

CLOUD DISTRIBUTION	ISOL	ISOLATED (LESS THAN 25%)
	SCT	SCATTERED (25 TO 50%)
	BKN	BROKEN (51 TO 75%)
	SLD	SOLID (GREATER THAN 75%)
CLOUDS TOP TEMPERATURE	CTT	CLOUD TOP TEMPERATURE
CONVECTION	WK CONVTN	WEAK CONVECTION (CTT GREATER THAN -25°C)
	MOD CONVTN	MODERATE CONVECTION (CTT BETWEEN -25°C TO -40°C)
	INT CONVTN	INTENSE CONVECTION (CTT BETWEEN -41°C TO -70°C)
	V INT CONVTN	VERY INTENSE CONVECTION (CTT LESS THAN -70°C)
METEOROLOGICAL SUB-DIVISIONS, STATES & UNION TERRITORIES	ARUPR	ARUNACHAL PRADESH
	BHR	BIHAR
	CHTGH	CHHATTISGARH
	COTL AP	COASTAL ANDHRA PRADESH
	COTL KRNTK	COASTAL KARNATAKA
	COTL ORS	COASTAL ORISSA
	GUJ	GUJARAT
	GWB	GANGETIC WEST BENGAL
	HARY	HARYANA
	DLH	DELHI
	HP	HIMACHAL PRADESH
	J&K	JAMMU AND KASHMIR
	JHRKND	JHARKHAND
	KER	KERALA
	KKN	KONKAN
	LKSDP	LAKSHADWEEP
	M MAHA	MADHYA MAHARASHTRA
	MAHA	MAHARASHTRA
	MANI	MANIPUR
	MEGHA	MEGHALAYA
	MIZO	MIZORAM
	MP	MADHYA PRADESH
	MRTHWD	MARATHWADA
	NAGA	NAGALAND

	N COTL AP	NORTH COASTAL ANDHRA PRADESH
	NIK	NORTH INTERIOR KARNATAKA
	ORS	ORISSA
	PJB	PUNJAB
	RAJ	RAJASTHAN
	RYLSM	RAYALASEEMA
	SAU & KUTCH	SAURASHTRA & KUTCH
	SHWB	SUB-HIMALAYAN WEST BENGAL
	SIK	SOUTH INTERIOR KARNATAKA
	SKM	SIKKIM
	TLNGN	TELANGANA
	TN	TAMIL NADU
	TRP	TRIPURA
	UP	UTTAR PRADESH
	UTRKN	UTTARAKHAND
	VID	VIDHARBHA
	SHWB	SUB HIMALAYAN WEST BENGAL
	GWB	GANGETIC WEST BENGAL
	ARSEA	ARABIAN SEA
	ILS	ISLANDS
MISCELLANEOUS	ASSW	IN ASSOCIATION WITH
	ASSTD	ASSOCIATED
	LLC	LOW LEVEL CIRCULATION
	EMBDD	EMBEDDED
	N/HOOD	NEIGHBOURHOOD
	EXT	EXTREME