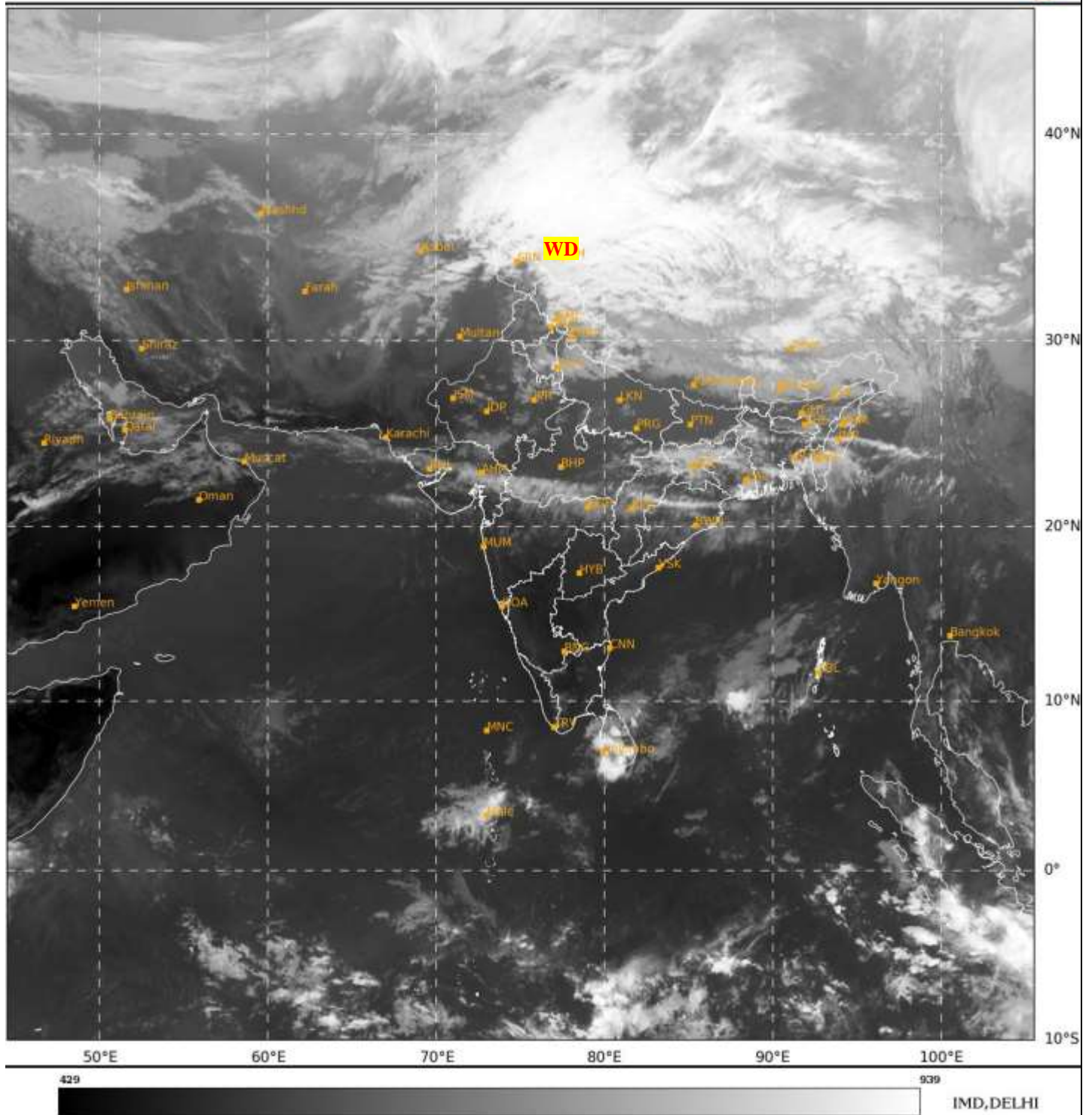




**SATELLITE BULLETIN BASED ON SATELLITE
IMAGERIES AND PRODUCTS**
31.01.2024 TIME 1200 UTC

SAT : INSAT-3D IMG
IMG_TIR1 10.8 um
L1C Mercator

31-01-2024/(1200 to 1226) GMT
31-01-2024/(1730 to 1756) IST



TCIN50 DEMS 311200

SATELLITE BULLETIN BASED ON INSAT- 3D PIC OF 311200 UTC (.)

REGION COVERED BETWEEN LAT 50.0°N TO 35.0°S AND LONG 40.0°E TO 125.0°E (.)

SALIENT FEATURES:-

WESTERN DISTURBANCE:-

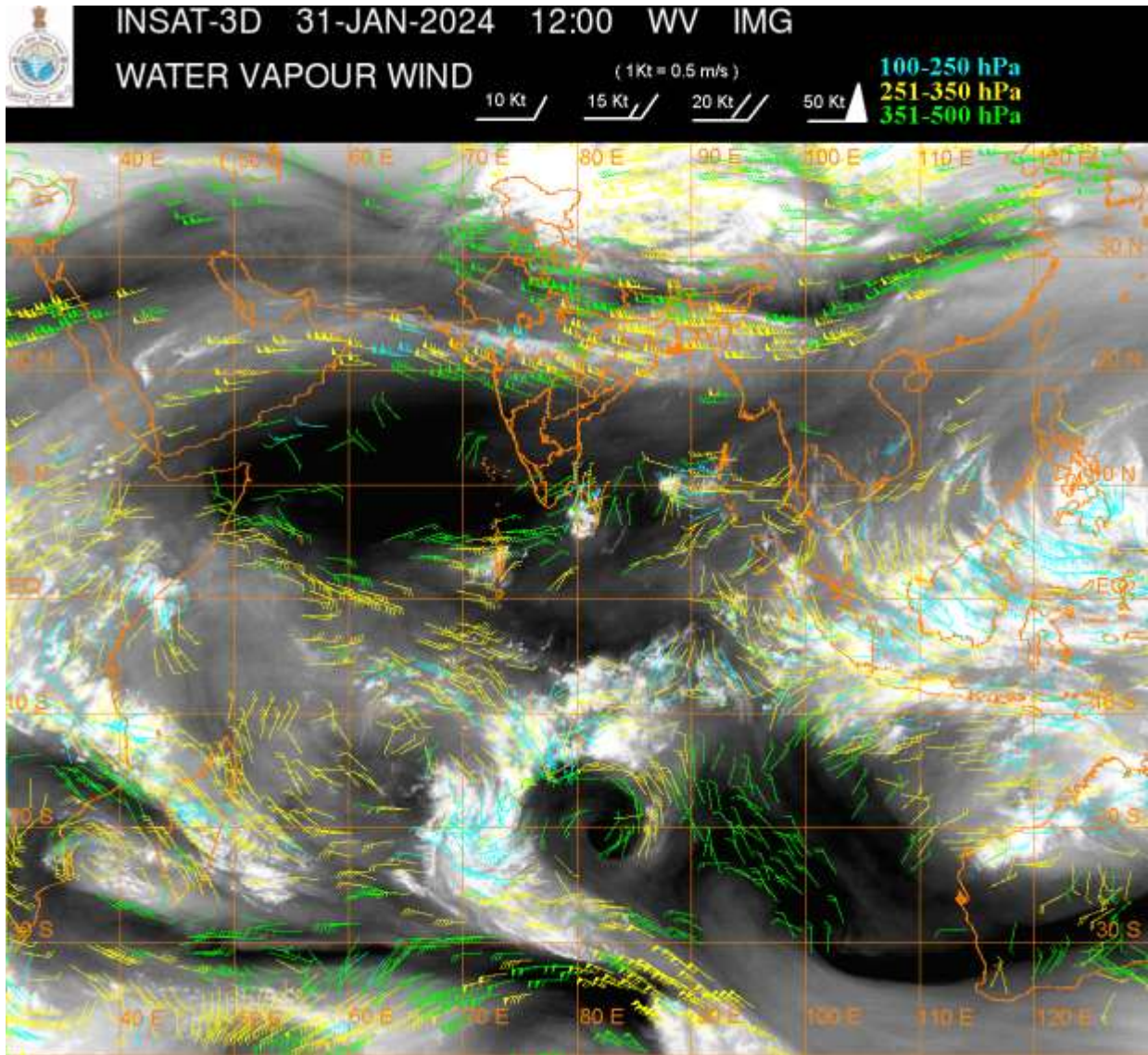
SCT MULTILAYERED CLOUDS OVER N PAK LADAKH J&K HP UTRKND PJB HARY ADJ NW UP
DLH N RAJ TIBET ADJ CHINA IN ASSW **WD** OVER THE AREA (.)

FOG / LOW CLOUDS:-

AT 1200 UTC FOG NO OBSERVED OVER INDIAN REGION (.)

WESTERLY JET STREAM :-

WESTERLY JET STREAM RUNS BETWEEN LAT 17.0N TO 30.0N ACROSS CENTRAL INDIA (.)



CLOUDS DESCRIPTION WITHIN INDIA:-

NORTH:-

SCT LOW/MED CLOUDS WITH EMBDD MOD TO INT CONVTN OVER LADAKH J&K E PJB HP NORTH UTRKND AND WK TO MOD CONVTN OVER REST PJB HARY DLH NW UP S UTRKND NW & SE UP (.) SCT LOW/MED CLOUDS OVER REST UP (.)

EAST:-

SCT LOW/MED CLOUDS WITH EMBDD WK TO MOD CONVTN OVER CHTGH S BHR JHRKND ORS GWB SHWB SKM NE STATES & BD (.) SCT LOW/MED CLOUDS OVER REST BHR (.)

WEST:-

SCT LOW/MED CLOUDS WITH EMBDD WK TO MOD CONVTN OVER NORTH RAJ E & S MP GUJ N VID (.) SCT LOW/MED CLOUDS OVER REST RAJ REST MP N MAHA (.)

SOUTH:-

SCT LOW/MED CLOUDS OVER COTL AP KER TN ANDAMAN ILS NICOBAR ILS & LKSDP ILS (.)

ARABIAN SEA:-

SCT MULTILAYERED CLOUDS WITH EMBDD ISOL WK TO MOD CONVTN OVER NORTH ARSEA (.) SCT LOW/MED CLOUDS OVER REST ARSEA (.)

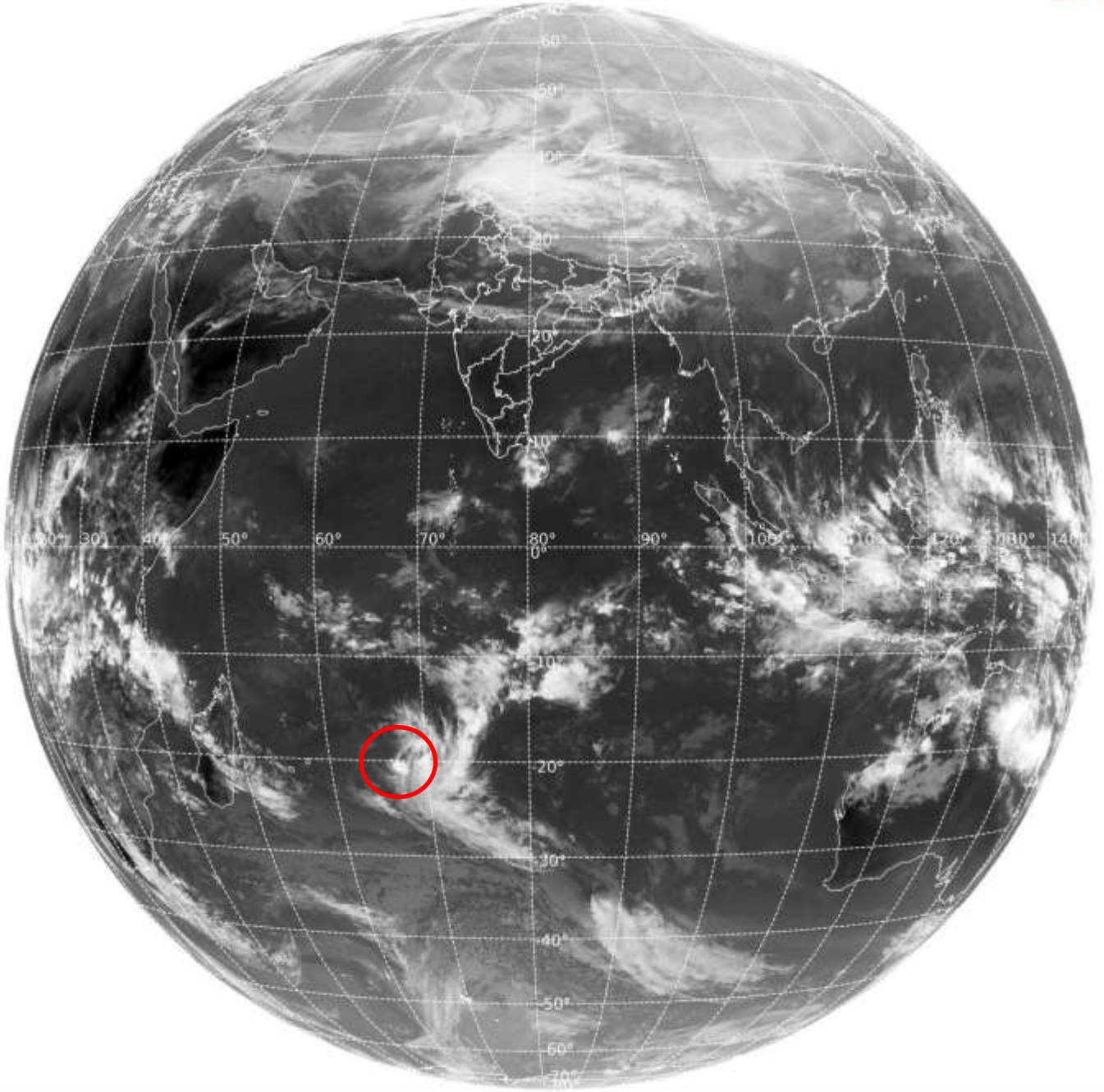
BAY OF BENGAL & ANDAMAN SEA:-

SCT LOW/MED CLOUDS WITH EMBDD MOD TO INT CONVTN OVER SOUTH BAY AND ISOL WK TO MOD CONVTN OVER NW BAY (.)

CLOUDS DESCRIPTION OUTSIDE INDIA:-

SAT : INSAT-3D IMG
Thermal Infrared1 Count 10.8 um
L1B FULL DISK

31-01-2024/(1200 to 1226) GMT
31-01-2024/(1730 to 1756) IST



429

973

IMD, DELHI

VORTEX OVER SOUTH INDIAN OCEAN:-

VORTEX OVER SOUTH INDIAN OCEAN (**AREA D60**) CENTERED NEAR **20.4S/67.0E** (.) INTENSITY **T2.0/2.5** (.) MAXIMUM SUSTAINED WINDS OF **28-33 KTS** (.) ASSTD SCT TO BKN LOW/MED CLOUDS WITH EMBDD INT TO V INT CONVTN OVER AREA BET LAT 15.0S TO 28.0S LONG 64.0E TO 74.0E (.)

SCT LOW/MED CLOUDS WITH EMBDD MOD TO INT CONVTN OVER SRI LANKA N PAK TIBET CHINA SUMATRA MALAYSIA BORNEO SOUTH CHINA SEA JAVA ILS & SEA CELEBES ILS & SEA PHILIPPINES MADAGASCAR MOZAMBIQUE CHANNEL AND OVER INDIAN OCEAN BET LAT 5.0N TO LAT 30.0S LONG 60.0E TO 100.0E (.)

TOO 31/1830 HRS IST=

NNNN

LEGEND:-

| | | |
|---|--------------|---|
| REGION | NORTH | J&K HP PJB HARY DLH UP UTRKND |
| | EAST | BHR JHRKND CHTGH ORS WB SKM NORTH- EAST STATES |
| | WEST | RAJ MP GUJ MAHA GOA |
| | SOUTH | TLNGN AP KRNTK KER TN LKSDP ANDAMAN & NICOBAR ILS |
| CLOUD DISTRIBUTION | ISOL | ISOLATED (LESS THAN 25%) |
| | SCT | SCATTERED (25 TO 50%) |
| | BKN | BROKEN (51 TO 75%) |
| | SLD | SOLID (GREATER THAN 75%) |
| CLOUDS TOP TEMPERATURE | CTT | CLOUD TOP TEMPERATURE |
| CONVECTION | WK CONVTN | WEAK CONVECTION (CTT GREATER THAN -25°C) |
| | MOD CONVTN | MODERATE CONVECTION (CTT BETWEEN -25°C TO -40°C) |
| | INT CONVTN | INTENSE CONVECTION (CTT BETWEEN -41°C TO -70°C) |
| | V INT CONVTN | VERY INTENSE CONVECTION (CTT LESS THAN -70°C) |
| METEOROLOGICAL SUB- DIVISIONS, STATES & UNION TERRITORIES | ARUPR | ARUNACHAL PRADESH |
| | BHR | BIHAR |
| | CHTGH | CHHATTISGARH |
| | COTL AP | COASTAL ANDHRA PRADESH |
| | COTL KRNTK | COASTAL KARNATAKA |
| | COTL ORS | COASTAL ORISSA |
| | GUJ | GUJARAT |
| | GWB | GANGETIC WEST BENGAL |
| | HARY | HARYANA |
| | DLH | DELHI |
| | HP | HIMACHAL PRADESH |
| | J&K | JAMMU AND KASHMIR |
| | JHRKND | JHARKHAND |
| | KER | KERALA |
| | KKN | KONKAN |
| | LKSDP | LAKSHADWEEP |
| | M MAHA | MADHYA MAHARASHTRA |
| | MAHA | MAHARASHTRA |
| | MANI | MANIPUR |
| | MEGHA | MEGHALAYA |
| | MIZO | MIZORAM |
| | MP | MADHYA PRADESH |
| | MRTHWD | MARATHWADA |
| | NAGA | NAGALAND |
| | N COTL AP | NORTH COASTAL ANDHRA PRADESH |

| | | |
|----------------------|------------------------|----------------------------------|
| | NIK | NORTH INTERIOR KARNATAKA |
| | ORS | ORISSA |
| | PJB | PUNJAB |
| | RAJ | RAJASTHAN |
| | RYLSM | RAYALASEEMA |
| | SAU & KUTCH | SAURASHTRA & KUTCH |
| | SHWB | SUB-HIMALAYAN WEST BENGAL |
| | SIK | SOUTH INTERIOR KARNATAKA |
| | SKM | SIKKIM |
| | TLNGN | TELANGANA |
| | TN | TAMIL NADU |
| | TRP | TRIPURA |
| | UP | UTTAR PRADESH |
| | UTRKND | UTTARAKHAND |
| | VID | VIDHARBHA |
| | SHWB | SUB HIMALAYAN WEST BENGAL |
| | GWB | GANGETIC WEST BENGAL |
| | ARSEA | ARABIAN SEA |
| | ILS | ISLANDS |
| MISCELLANEOUS | ASSW | IN ASSOCIATION WITH |
| | ASSTD | ASSOCIATED |
| | LLC | LOW LEVEL CIRCULATION |
| | EMBDD | EMBEDDED |
| | N/HOOD | NEIGHBOURHOOD |
| | EXT | EXTREME |