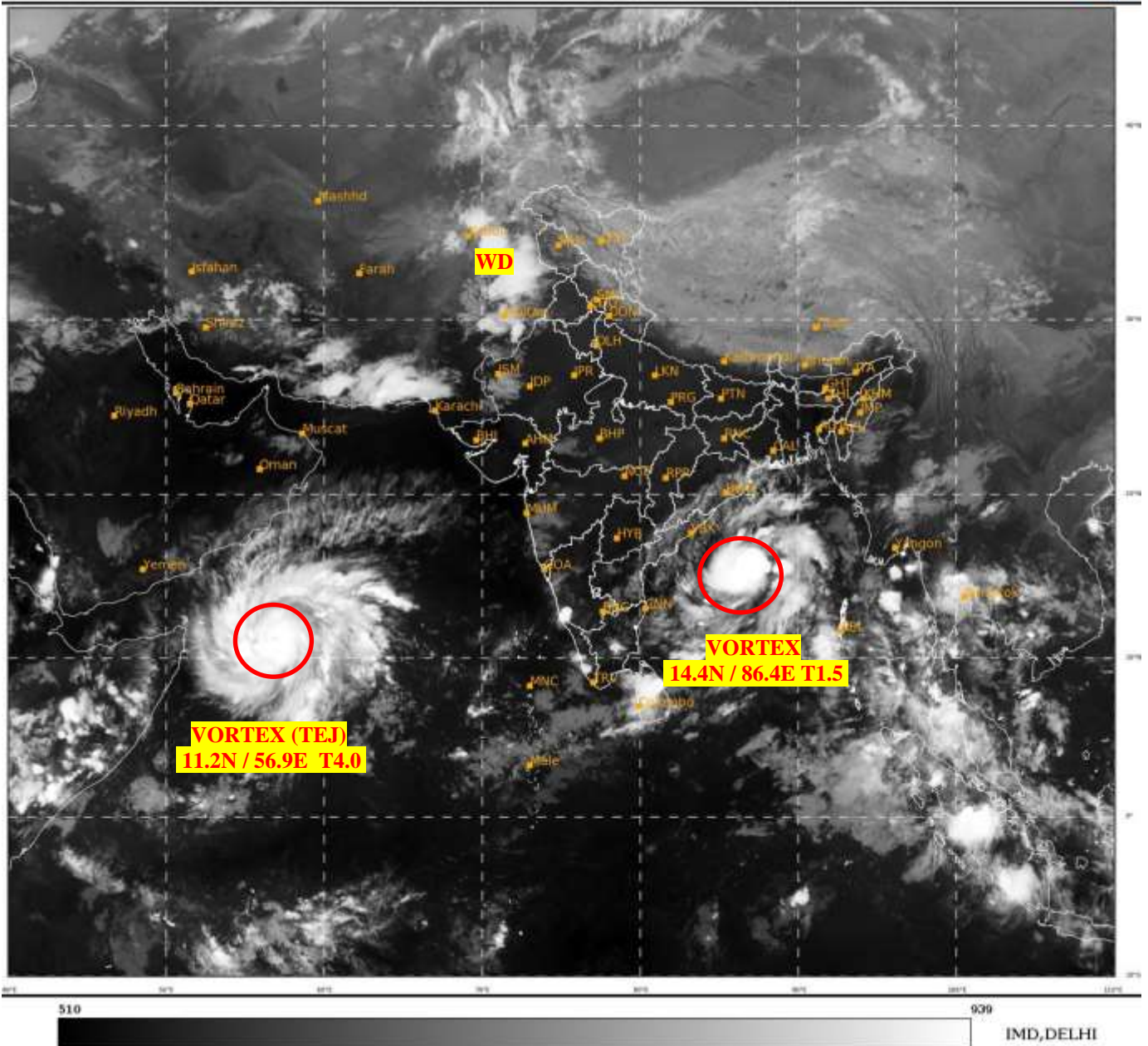




**SATELLITE BULLETIN BASED ON SATELLITE
IMAGERIES AND PRODUCTS**
21.10.2023 TIME 1500 UTC

SAT : INSAT-3D IMG
IMG_TIR1 10.8 um
LIC Mercator

21-10-2023/(1500 to 1526) GMT
21-10-2023/(2030 to 2056) IST



TCIN50 DEMS 211500

SATELLITE BULLETIN BASED ON INSAT-3D PIC OF 211500 UTC (.)

REGION COVERED BETWEEN LAT 50.0°N TO 35.0°S AND LONG 40.0°E TO 125.0°E (.)

SALIENT FEATURES:-

VORTEX (TEJ) OVER SOUTH-WEST ARSEA & N/HOOD:-

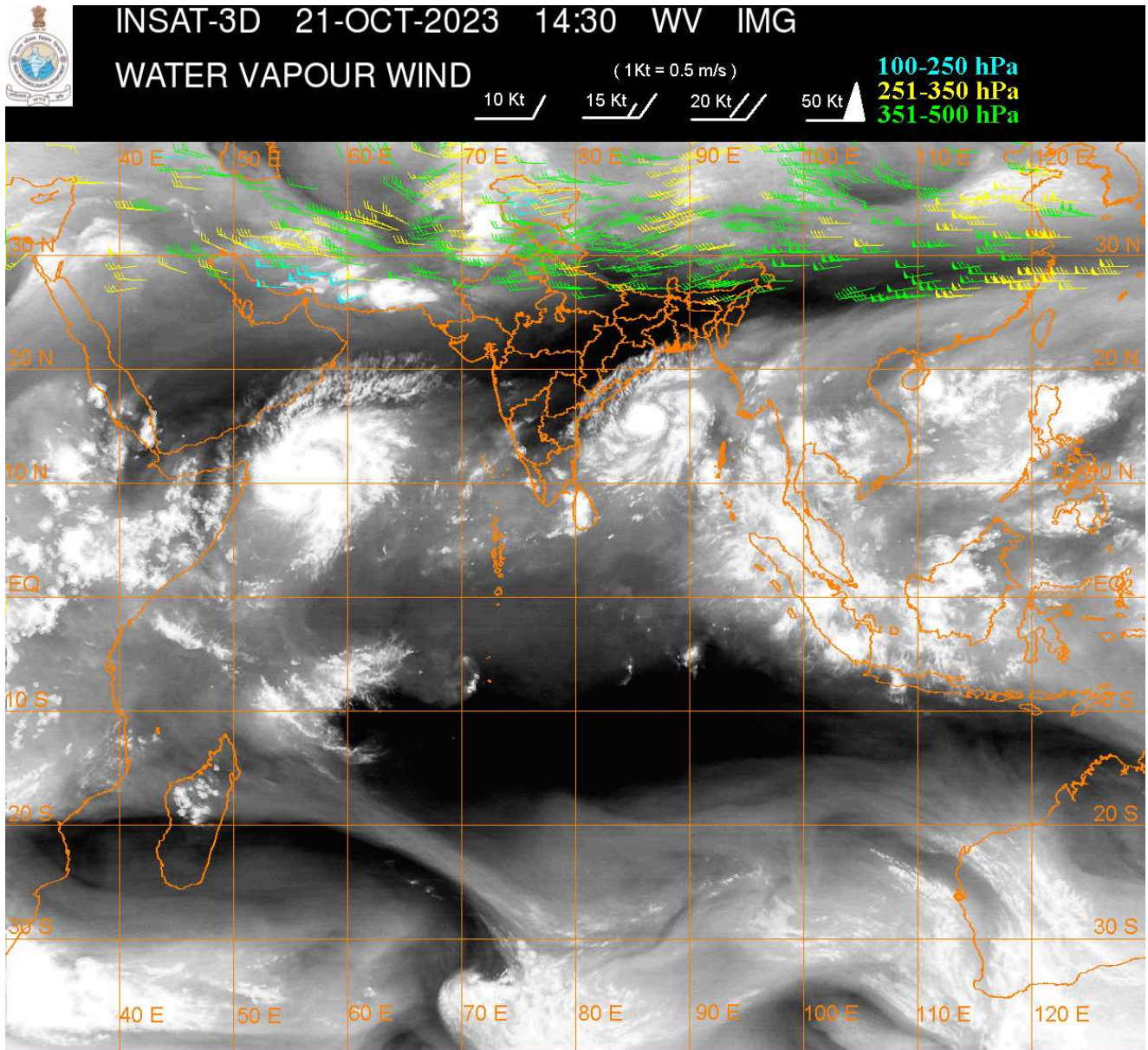
VORTEX (TEJ) OVER SW ARSEA & N/HOOD HAS FURTHER INTENSIFIED AND CENTERED NEAR **11.2N / 56.9E** (.) INTENSITY **T4.0/4.0** (.) EYE IS SEEN IN IR IMAGERY (.) MAXIMUM SUSTAINED SURFACE WIND (MSW) **64-89KTS** (.) ASSTD SCT TO BKN LOW/MED CLOUDS WITH EMBDD INT TO V INT CONVTN OVER SW ADJ WC ARSEA BET LAT 6.0N TO 15.5N LONG 53.0E TO 63.0E (.) MINIMUM **CTT MINUS 93 DEG CEL** (.)

VORTEX OVER WEST CENTRAL BAY & N/HOOD:-

VORTEX OVER WC BAY N/HOOD HAS INTENSIFIED AND NOW LAY CENTERED WITHIN HALF A DEGREE OF **14.4N / 86.4E** (.) INTENSITY **T1.5** (.) MAXIMUM SUSTAINED SURFACE WIND (MSW) **17-27 KTS** (.) ASSTD SCT TO BKN LOW/MED CLOUDS WITH EMBDD INT TO V INT CONVTN OVER CENTRAL BAY BET LAT 12.0N TO 17.0N LONG 84.0E TO 90.0E (.) MINIMUM **CTT MINUS 93 DEG CEL** (.)

WESTERN DISTURBANCE (WD):-

SCT MULTILAYERED CLOUDS OVER PAK AND N/HOOD IN ASSW **WD** OVER THE AREA (.)



CLOUDS DESCRIPTION WITHIN INDIA:-

NORTH:-

SCT LOW/MED CLOUDS WITH EMBDD ISOL WK TO MOD CONVTN OVER LADAKH J&K N HP N UTRKND (.)SCT LOW/MED CLOUDS OVER PJB S HP S UTRKND (.)

EAST:-

SCT LOW/MED CLOUDS WITH EMBDD ISOL MOD TO INT CONVTN OVER ORS AND ISOL WK CONVTN OVER SKM ARUPR S MIZO (.) SCT LOW/MED CLOUDS OVER CHTGH S GWB REST NE STATES (.)

WEST:-

SCT LOW/MED CLOUDS WITH EMBDD ISOL WK TO MOD CONVTN OVER W RAJ MADHYA MAHA KKN (.) SCT LOW/MED CLOUDS OVER REST RAJ SW MP GUJ REST MAHA GOA.(.)

SOUTH:-

SCT LOW/MED CLOUDS WITH EMBDD INT TO V INT CONVTN OVER SW SIK (.) SCT LOW/MED CLOUDS WITH EMBDD MOD TO INT CONVTN OVER KER C TN ANDAMAN & NICOBAR ILS AND ISOL WK TO MOD CONVTN OVER COTL AP RYLSMA REST KRNTK N TN LKSDP ILS (.) SCT LOW/MED CLOUDS OVER S TLNGN S TN (.)

RABIAN SEA:-

SCT TO BKN LOW/MED CLOUDS WITH EMBDD INT TO V INT CONVTN OVER SW & WC ARSEA (.) SCT LOW/MED CLOUDS WITH EMBDD ISOL MOD TO INT CONVTN OVER SE ARSEA (.)

BAY OF BENGAL & ANDAMAN SEA:-

SCT TO BKN LOW/MOD CLOUDS WITH EMBDD INT TO V INT CONVTN OVER CENTRAL BAY (.)
SCT LOW/MOD CLOUDS WITH EMBDD MOD TO INT CONVTN OVER REST BAY ANDAMAN SEA
(.)

CLOUDS DESCRIPTION OUTSIDE INDIA:-

SCT LOW/MED CLOUDS WITH EMBDD MOD TO INT CONVTN OVER SRI LANKA GULF OF MANNAR MALDIVES PAK TIBET CHINA S MYANMAR THAILAND GULF OF THAILAND CAMBODIA LAOS S VIETNAM HAINAN SUMATRA STR OF MALACCA MALAYSIA BORNEO SOUTH CHINA SEA JAVA ILS & SEA CELEBES ILS & SEA PHILIPPINES N MADAGASCAR AND OVER INDIAN OCEAN BET LAT 5.0N TO 12.5S LONG 50.0E TO 70.0E AND BET LAT 5.0N TO 5.0S LONG 85.0E TO 100.0E (.)

TOO 21/2150 HRS IST=

NNNN

LEGEND:-

REGION	NORTH	J&K HP PJB HARY DLH UP UTRKND
	EAST	BHR JHRKND CHTGH OR WB SKM NORTH- EAST STATES
	WEST	RAJ MP GUJ MAHA GOA
	SOUTH	TLNGN AP KRNTK KER TN LKSDP ANDAMAN & NICOBAR ILS
CLOUD DISTRIBUTION	ISOL	ISOLATED (LESS THAN 25%)
	SCT	SCATTERED (25 TO 50%)
	BKN	BROKEN (51 TO 75%)
	SLD	SOLID (GREATER THAN 75%)
CLOUDS TOP TEMPERATURE	CTT	CLOUD TOP TEMPERATURE
CONVECTION	WK CONVTN	WEAK CONVECTION (CTT GREATER THAN -25°C)
	MOD CONVTN	MODERATE CONVECTION (CTT BETWEEN -25°C TO -40°C)
	INT CONVTN	INTENSE CONVECTION (CTT BETWEEN -41°C TO -70°C)
	V INT CONVTN	VERY INTENSE CONVECTION (CTT LESS THAN -70°C)
METEOROLOGICAL SUB- DIVISIONS, STATES & UNION TERRITORIES	ARUPR	ARUNACHAL PRADESH
	BHR	BIHAR
	CHTGH	CHHATTISGARH
	COTL AP	COASTAL ANDHRA PRADESH
	COTL KRNTK	COASTAL KARNATAKA
	COTL ORS	COASTAL ORISSA
	GUJ	GUJARAT
	GWB	GANGETIC WEST BENGAL
	HARY	HARYANA
	DLH	DELHI
	HP	HIMACHAL PRADESH
	J&K	JAMMU AND KASHMIR
	JHRKND	JHARKHAND

	KER	KERALA
	KKN	KONKAN
	LKSDP	LAKSHADWEEP
	M MAHA	MADHYA MAHARASHTRA
	MAHA	MAHARASHTRA
	MANI	MANIPUR
	MEGHA	MEGHALAYA
	MIZO	MIZORAM
	MP	MADHYA PRADESH
	MRTHWD	MARATHWADA
	NAGA	NAGALAND
	N COTL AP	NORTH COASTAL ANDHRA PRADESH
	NIK	NORTH INTERIOR KARNATAKA
	ORS	ORISSA
	PJB	PUNJAB
	RAJ	RAJASTHAN
	RYLSM	RAYALASEEMA
	SAU & KUTCH	SAURASHTRA & KUTCH
	SHWB	SUB-HIMALAYAN WEST BENGAL
	SIK	SOUTH INTERIOR KARNATAKA
	SKM	SIKKIM
	TLNGN	TELANGANA
	TN	TAMIL NADU
	TRP	TRIPURA
	UP	UTTAR PRADESH
	UTRKND	UTTARAKHAND
	VID	VIDHARBHA
	SHWB	SUB HIMALAYAN WEST BENGAL
	GWB	GANGETIC WEST BENGAL
	ARSEA	ARABIAN SEA
	ILS	ISLANDS
MISCELLANEOUS	ASSW	IN ASSOCIATION WITH
	ASSTD	ASSOCIATED
	LLC	LOW LEVEL CIRCULATION
	EMBDD	EMBEDDED
	N/HOOD	NEIGHBOURHOOD
	EXT	EXTREME