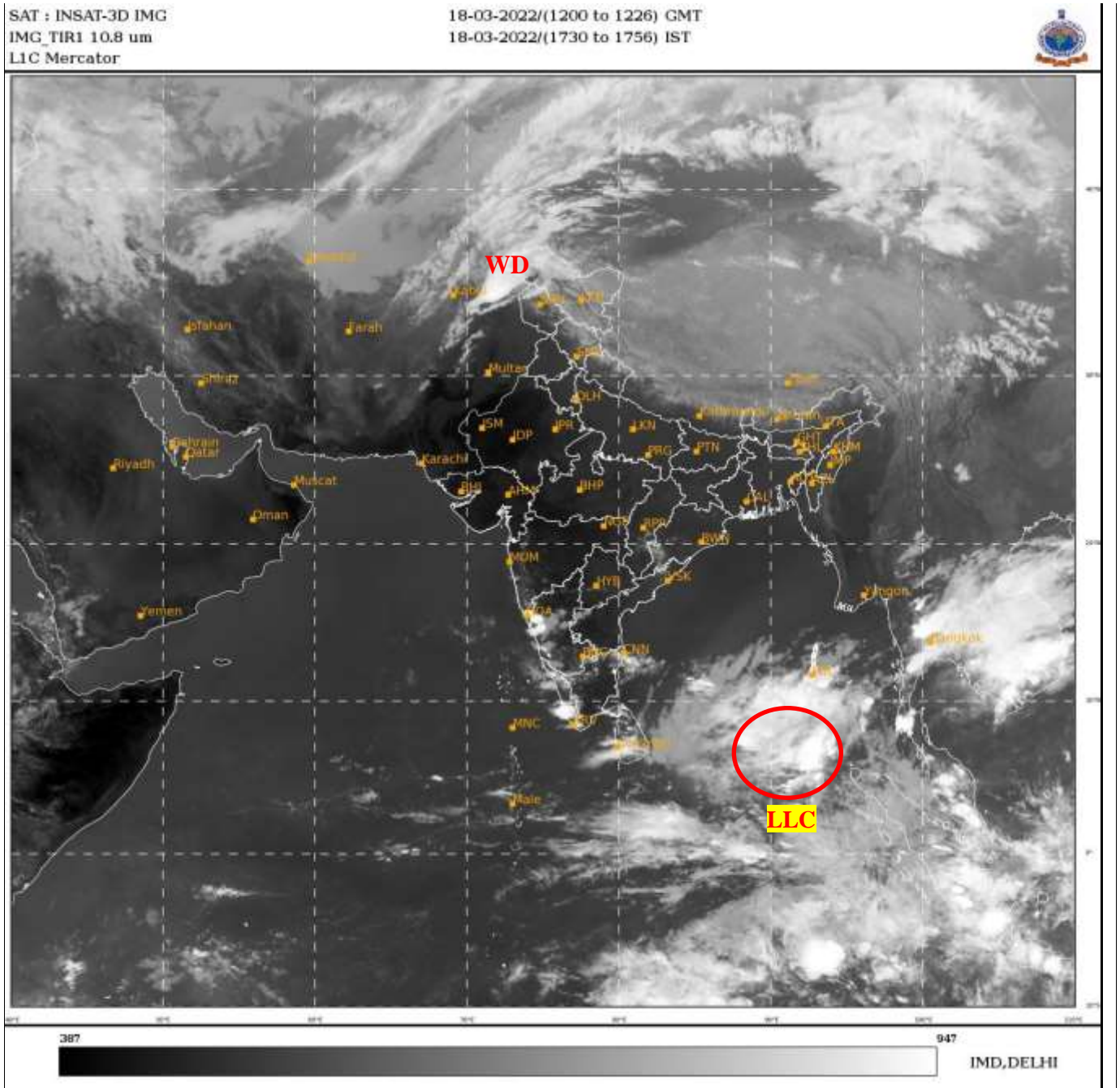




**SATELLITE BULLETIN BASED ON SATELLITE
IMAGERIES AND PRODUCTS**
18.03.2022 TIME 1200 UTC



TCIN50 DEMS 181200

SATELLITE BULLETIN BASED ON INSAT-3D PIC OF 181200 UTC (.)

REGION COVERED BETWEEN LAT 50.0°N TO 30.0°S AND LONG 40.0°E TO 125.0°E (.)

SALIENT FEATURES:-

LLC OVER SOUTH-EAST BAY ADJ SOUTH ANDAMAN SEA:-

SCT TO BKN LOW/MED CLOUDS WITH EMBDD INT TO V INT CONVTN OVER SE BAY ADJ S ANDAMAN SEA BET LAT 5.0N TO 11.0N LONG 88.0E TO 95.0E ANDAMAN & NICOBAR ISLANDS IN ASSW LOW LEVEL CIRCULATION (LLC) OVER THE AREA (.) MINIMUM CTT MINUS 93 DEG C (.)

WESTERN DISTURBANCE (WD):-

SCT MULTILAYERED CLOUDS OVER N AFGAN EXTREME N PAK N J&K W LADAKH AND N/HOOD IN ASSW WD OVER THE AREA (.)

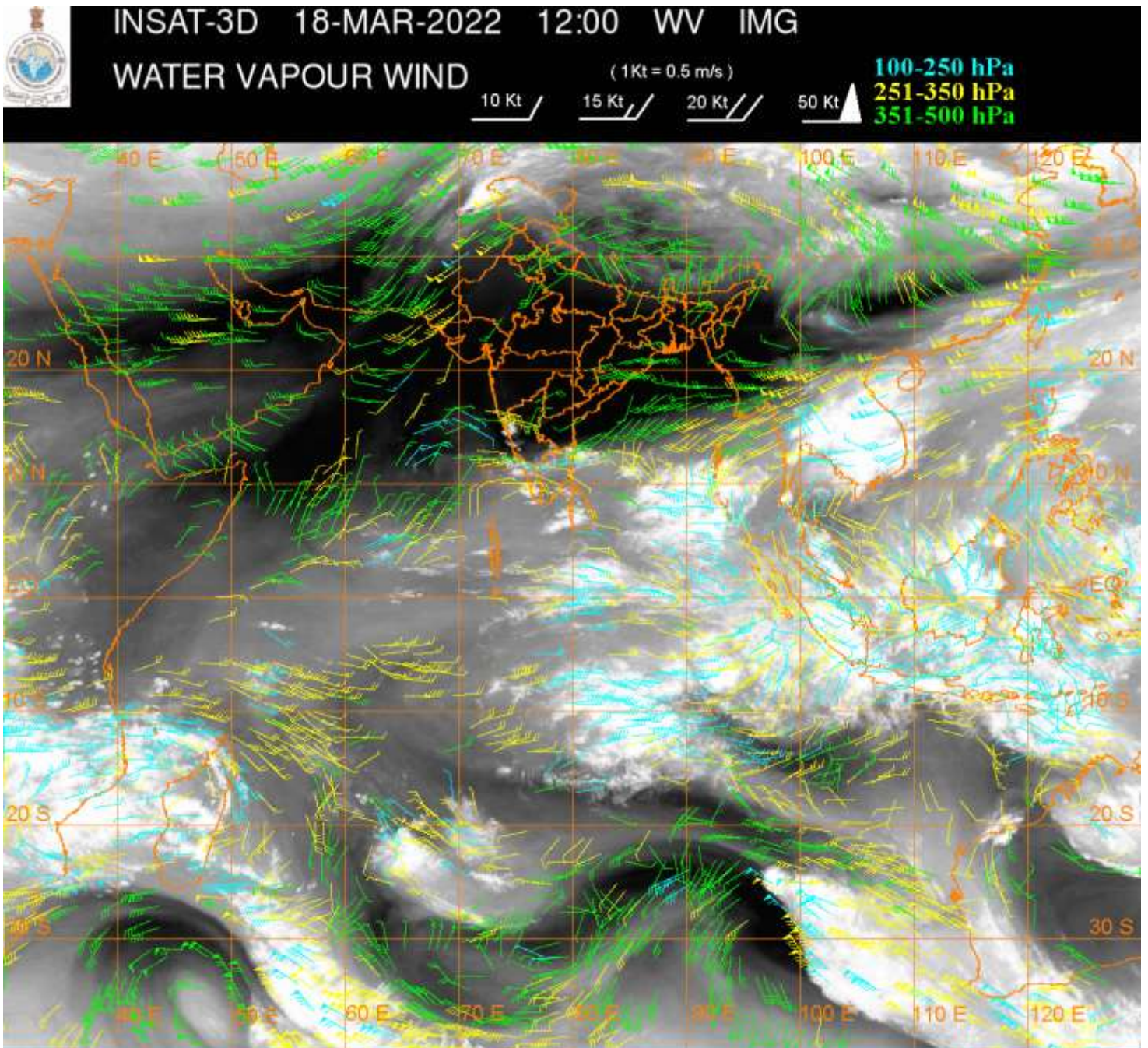
THUNDERSTORM/ CONVECTIVE ACTIVITY:-

THUNDERSTORM/ CONVECTIVE ACTIVITY OBSERVED OVER GOA W KRNTK KERALA EXTREME S TN (MINIMUM CTT MINUS 75 DEG C) (.)

PRECIPITATION NOWCASTING (BASED ON SCOPE NOWCASTING TOOL AT 1100 UTC):-

RAINFALL UPTO **05 MM** OBSERVED OVER NW KRNTK KERALA (.)

RAINFALL UPTO **10 MM** OBSERVED OVER ANDAMAN & NICOBAR ILS (.)



CLOUDS DESCRIPTION WITHIN INDIA:-

NORTH:-

SCT LOW/MED CLOUDS WITH EMBDD MOD TO INT CONVTN OVER N J&K W LADAKH AND ISOL WK CONVTN OVER REST LADAKH REST J&K N HP N UTRKND (.) SCT LOW/MED CLOUDS OVER S HP S UTRKND (.)

EAST:-

SCT LOW/MED CLOUDS WITH EMBDD ISOL WK CONVTN OVER S CHTGH SW ORS SKM ARUPR (.) SCT LOW/MED CLOUDS OVER MEGHA NAGA MANI (.)

WEST:-

SCT LOW/MED CLOUDS WITH EMBDD MOD TO INT CONVTN OVER GOA (.) SCT LOW/MED CLOUDS OVER KKN MADHYA MAHA (.)

SOUTH:-

SCT TO BKN LOW/MED CLOUDS WITH EMBDD INT TO V INT CONVTN OVER W KRNTK S KER EXTREME S TN (MINIMUM CTT MINUS **75** DEG C) ANDAMAN & NICOBAR ILS (MINIMUM CTT MINUS **70** DEG C) (.) SCT LOW/MED CLOUDS WITH EMBDD MOD TO INT CONVTN OVER N KER NE TN AND ISOL WK TO MOD CONVTN OVER N RYLSM E KRNTK REST TN (.) SCT LOW/MED CLOUDS OVER N COTL AP S TLNGN S RYLSM & LKSDP (.)

ARABIAN SEA:-

SCT LOW/MED CLOUDS WITH EMBDD INT TO V INT CONVTN OVER SE ARSEA OFF KER COAST (.)

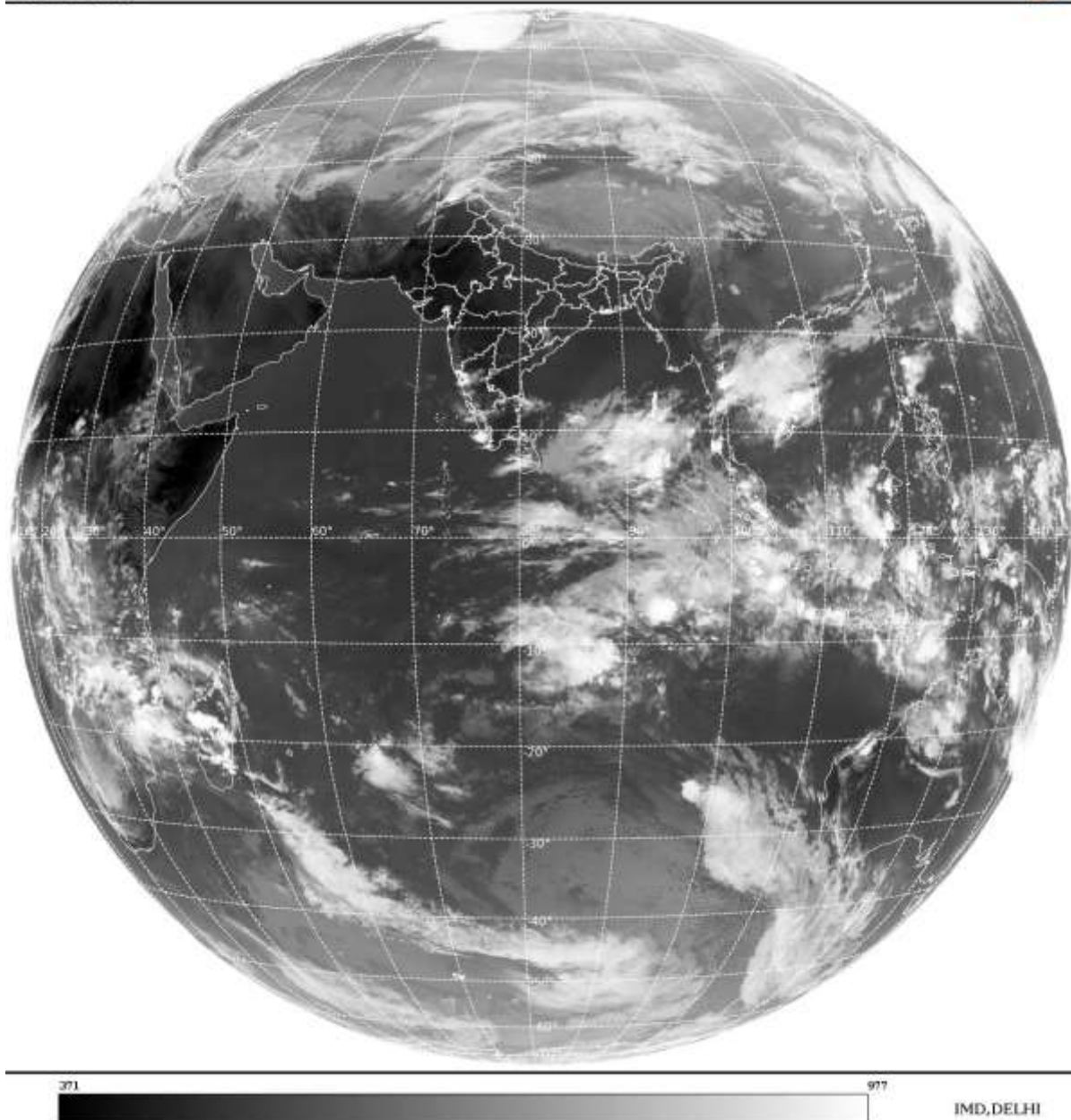
BAY OF BENGAL & ANDAMAN SEA:-

SCT TO BKN LOW/MED CLOUDS WITH EMBDD INT TO V INT CONVTN OVER SE BAY SOUTH ANDAMAN SEA AND MOD TO INT CONVTN OVER SW BAY N ANDAMAN SEA (.)

CLOUDS DESCRIPTION OUTSIDE INDIA:

SAT : INSAT-3D IMG
Thermal Infrared1 Count 10.8 um
L1B FULL DISK

18-03-2022/(1200 to 1226) GMT
18-03-2022/(1730 to 1756) IST



SCT LOW/MED CLOUDS WITH EMBDD MOD TO INT CONVTN OVER SRILANKA N PAK CHINA THAILAND GULF OF THAILAND CAMBODIA LAOS VIETNAM HAINAN SUMATRA STR OF MALACCA MALAYSIA BORNEO S CHINA SEA JAVA ILS & SEA CELEBES ILS & SEA PHILIPPINES YELLOW SEA MADAGASCAR MOZAMBIQUE CHANNEL AND OVER INDIAN OCEAN BET LAT 5.0N TO 14.0S LONG 80.0E TO 100.0E AND BET LAT 20.0S TO 30.0S LONG 50.0E TO 110.0E (.)

TOO 18/1830 HRS IST=

NNNN

LEGEND:-

REGION	NORTH	J&K HP PJB HARY DLH UP UTRKND
	EAST	BHR JHRKND CHTGH OR WB SKM NORTH- EAST STATES
	WEST	RAJ MP GUJ MAHA GOA
	SOUTH	TLNGN AP KRNTK KER TN LKSDP ANDAMAN & NICOBAR ILS

CLOUD DISTRIBUTION	ISOL	ISOLATED (LESS THAN 25%)	
	SCT	SCATTERED (25 TO 50%)	
	BKN	BROKEN (51 TO 75%)	
	SLD	SOLID (GREATER THAN 75%)	
CLOUDS TOP TEMPERATURE	CTT	CLOUD TOP TEMPERATURE	
CONVECTION	WK CONVTN	WEAK CONVECTION (CTT GREATER THAN -25°C)	
	MOD CONVTN	MODERATE CONVECTION (CTT BETWEEN -25°C TO -40°C)	
	INT CONVTN	INTENSE CONVECTION (CTT BETWEEN -41°C TO -70°C)	
	V INT CONVTN	VERY INTENSE CONVECTION (CTT LESS THAN -70°C)	
METEOROLOGICAL SUB-DIVISIONS, STATES & UNION TERRITORIES	ARUPR	ARUNACHAL PRADESH	
	BHR	BIHAR	
	CHTGH	CHHATTISGARH	
	COTL AP	COASTAL ANDHRA PRADESH	
	COTL KRNTK	COASTAL KARNATAKA	
	COTL ORS	COASTAL ORISSA	
	GUJ	GUJARAT	
	GWB	GANGETIC WEST BENGAL	
	HARY	HARYANA	
	DLH	DELHI	
	HP	HIMACHAL PRADESH	
	J&K	JAMMU AND KASHMIR	
	JHRKND	JHARKHAND	
	KER	KERALA	
	KKN	KONKAN	
	LKSDP	LAKSHADWEEP	
	M MAHA	MADHYA MAHARASHTRA	
	MAHA	MAHARASHTRA	
	MANI	MANIPUR	
	MEGHA	MEGHALAYA	
	MIZO	MIZORAM	
	MP	MADHYA PRADESH	
		MRTHWD	MARATHWADA
		NAGA	NAGALAND
N COTL AP		NORTH COASTAL ANDHRA PRADESH	
NIK		NORTH INTERIOR KARNATAKA	
ORS		ORISSA	

	PJB	PUNJAB
	RAJ	RAJASTHAN
	RYLSM	RAYALASEEMA
	SAU & KUTCH	SAURASHTRA & KUTCH
	SHWB	SUB-HIMALAYAN WEST BENGAL
	SIK	SOUTH INTERIOR KARNATAKA
	SKM	SIKKIM
	TLNGN	TELANGANA
	TN	TAMIL NADU
	TRP	TRIPURA
	UP	UTTAR PRADESH
	UTRKN	UTTARAKHAND
	VID	VIDHARBHA
	SHWB	SUB HIMALAYAN WEST BENGAL
	GWB	GANGETIC WEST BENGAL
	ARSEA	ARABIAN SEA
	ILS	ISLANDS
MISCELLANEOUS	ASSW	IN ASSOCIATION WITH
	ASSTD	ASSOCIATED
	LLC	LOW LEVEL CIRCULATION
	EMBDD	EMBEDDED
	N/HOOD	NEIGHBOURHOOD
	EXT	EXTREME