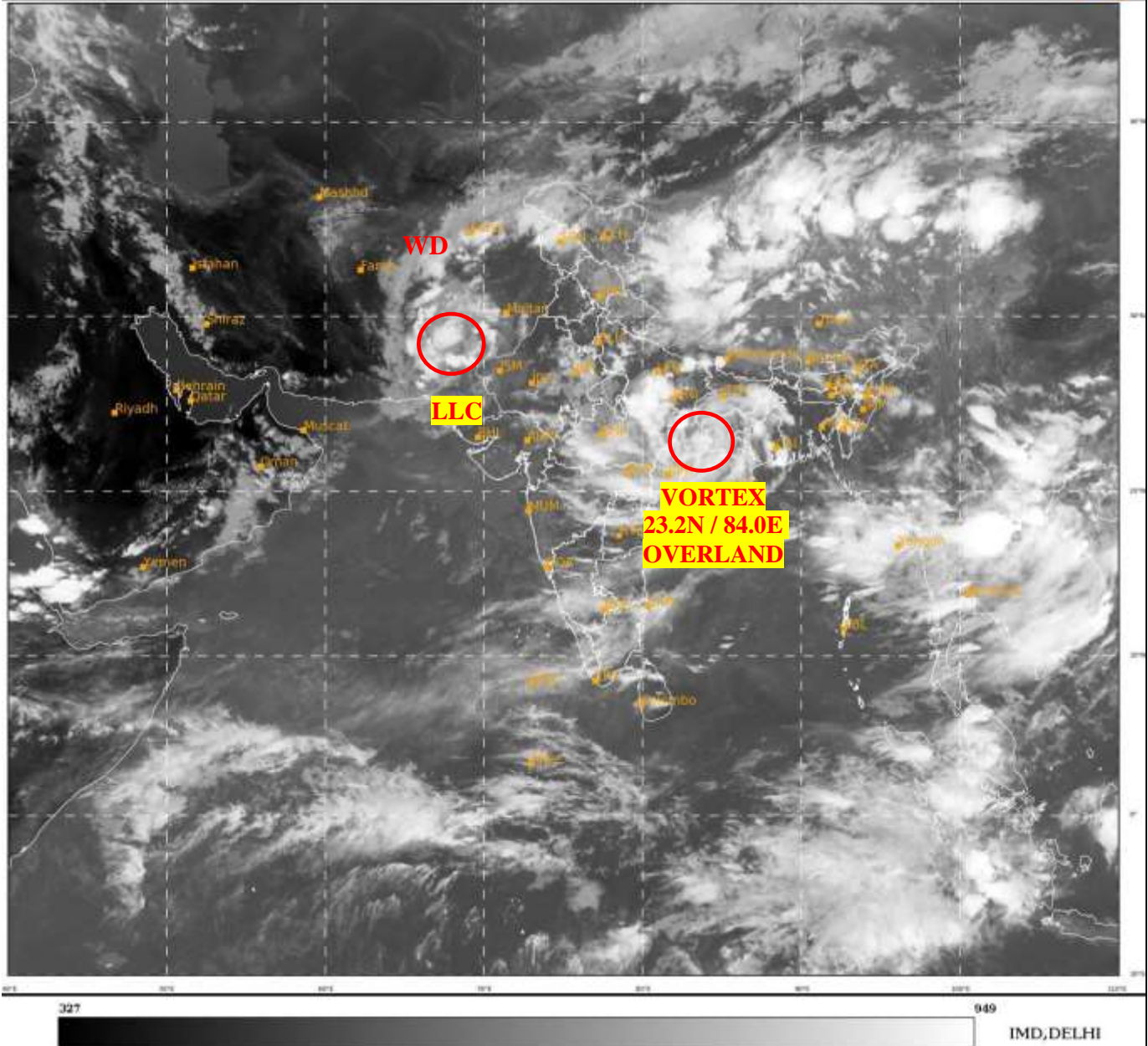




**SATELLITE BULLETIN BASED ON SATELLITE
IMAGERIES AND PRODUCTS**
20.08.2022 TIME 1200 UTC

SAT : INSAT-3D IMG
IMG TIR1 10.8 um
LIC Mercator

20-08-2022/(1200 to 1226) GMT
20-08-2022/(1730 to 1756) IST



TCIN50 DEMS 201200

SATELLITE BULLETIN BASED ON INSAT-3D PIC OF 201200 UTC (.)

REGION COVERED BETWEEN LAT 50.0°N TO 30.0°S AND LONG 40.0°E TO 125.0°E (.)

SALIENT FEATURES:-

VORTEX OVER NORTH CHHATTISGARH ADJ SOUTH-WEST JHARKHAND:-

VORTEX OVER N CHTGH ADJ SW JHRKND CENTERED WITHIN HALF A DEGREE OF **23.2N / 84.0E** (.) ASSTD SCT TO BKN LOW/MED CLOUDS WITH EMBDD INT TO V INT CONVTN OVER JHRKND ORS CHTGH E MP (MINIMUM CTT MINUS **85** DEG C) (.)

LLC OVER SOUTH PAK & N/HOOD:-

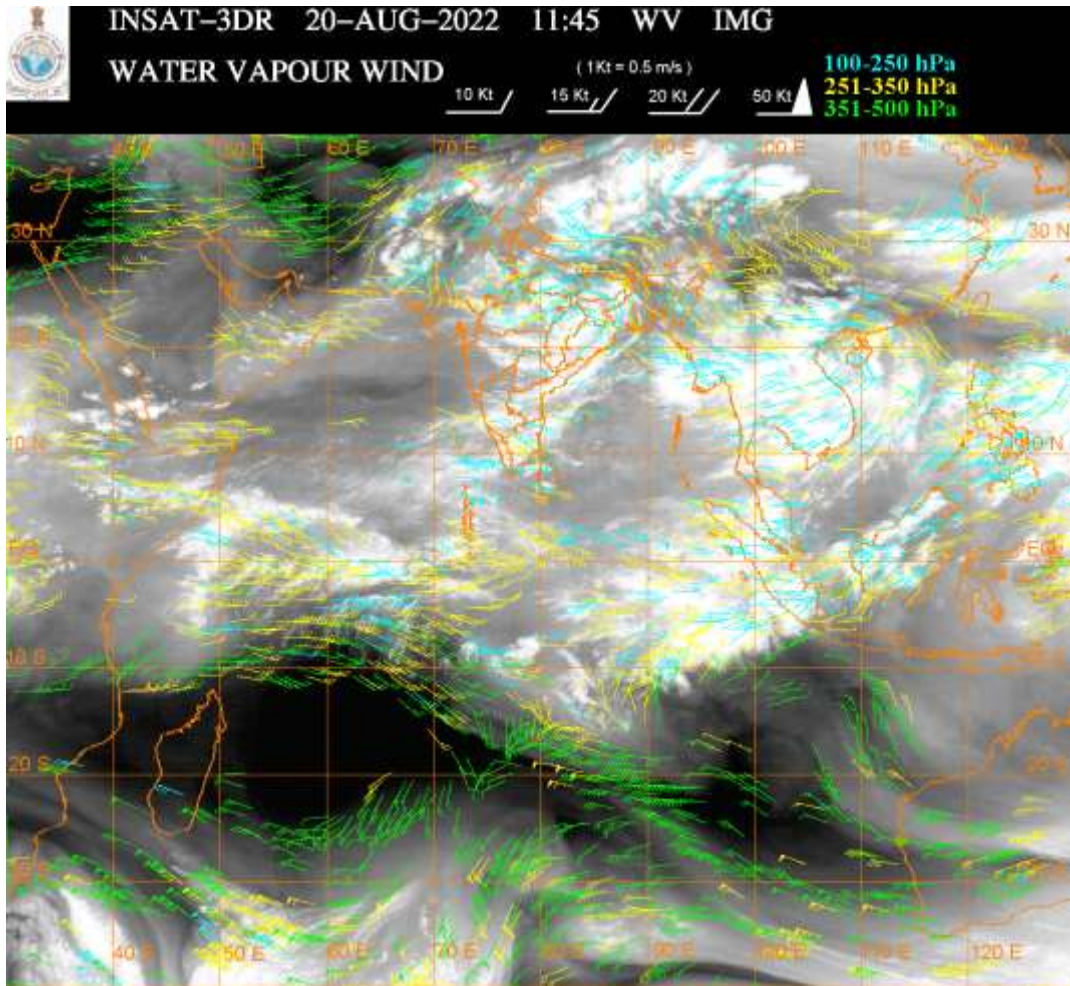
LLC OVER SOUTH PAK & N/HOOD (.) ASSTD SCT TO BKN LOW/MED CLOUDS WITH EMBDD INT TO V INT CONVTN OVER S PAK (MINIMUM CTT MINUS **80** DEG C) (.)

WESTERN DISTURBANCE:-

SCT MULTILAYERED OVER AFGAN N PAK J&K LADAKH AND N/HOOD IN ASSW **WD** OVER THE AREA (.)

INTENSE CONVECTIVE CLOUDS:-

INTENSE CONVECTIVE CLOUDS OBSERVED OVER J&K LADAKH UP BHR JHRKND CHTGH ORS GWB ASSAM N MIZO MP VID TLNGN (.)



CLOUDS DESCRIPTION WITHIN INDIA:-

NORTH:-

SCT TO BKN LOW/MED CLOUDS WITH EMBDD INT TO V INT CONVTN OVER N J&K (MINIMUM CTT MINUS 75 DEG C) SW & E UP (MINIMUM CTT MINUS 93 DEG C) (.) SCT TO BKN LOW/MED CLOUDS WITH EMBDD MOD TO INT CONVTN OVER LADAKH SE UTRKND NE PJB S HARY REST UP AND WK TO MOD CONVTN OVER S J&K HP REST UTRKND REST PJB N HARY (.) SCT LOW/MED CLOUDS OVER DLH (.)

EAST:-

SCT TO BKN LOW/MED CLOUDS WITH EMBDD INT TO V INT CONVTN OVER CHTGH GWB C ASSAM N MIZO (MINIMUM CTT MINUS 85 DEG C) (.) SCT TO BKN LOW/MED CLOUDS WITH EMBDD MOD TO INT CONVTN OVER BHR JHRKND ORS SHWB ARUPR REST ASSAM NAGA MANI N TRP & W BD (.) SCT LOW/MED CLOUDS WITH EMBDD WK CONVTN OVER SKM MEGHA (.) SCT LOW/MED CLOUDS OVER S MIZO S TRP (.)

WEST:-

SCT TO BKN LOW/MED CLOUDS WITH EMBDD INT TO V INT CONVTN OVER MP (MINIMUM CTT MINUS 93 DEG C) VID (MINIMUM CTT MINUS 85 DEG C) (.) SCT LOW/MED CLOUDS WITH EMBDD MOD TO INT CONVTN OVER RAJ NORTH MADHYA MAHA MRTHWD GOA AND ISOL WK TO MOD CONVTN OVER GUJ KKN SOUTH MADHYA MAHA (.)

SOUTH:-

SCT LOW/MED CLOUDS WITH EMBDD INT TO V INT CONVTN OVER TLNGN (MINIMUM CTT MINUS 79 DEG C) (.) SCT LOW/MED CLOUDS WITH EMBDD MOD TO INT CONVTN OVER KRNTK RYLSM COTL AP KER TN (.) SCT LOW/MED CLOUDS WITH EMBDD WK CONVTN OVER LKSDP ILS (.) SCT LOW/MED CLOUDS OVER ANDAMAN & NICOBAR ILS (.)

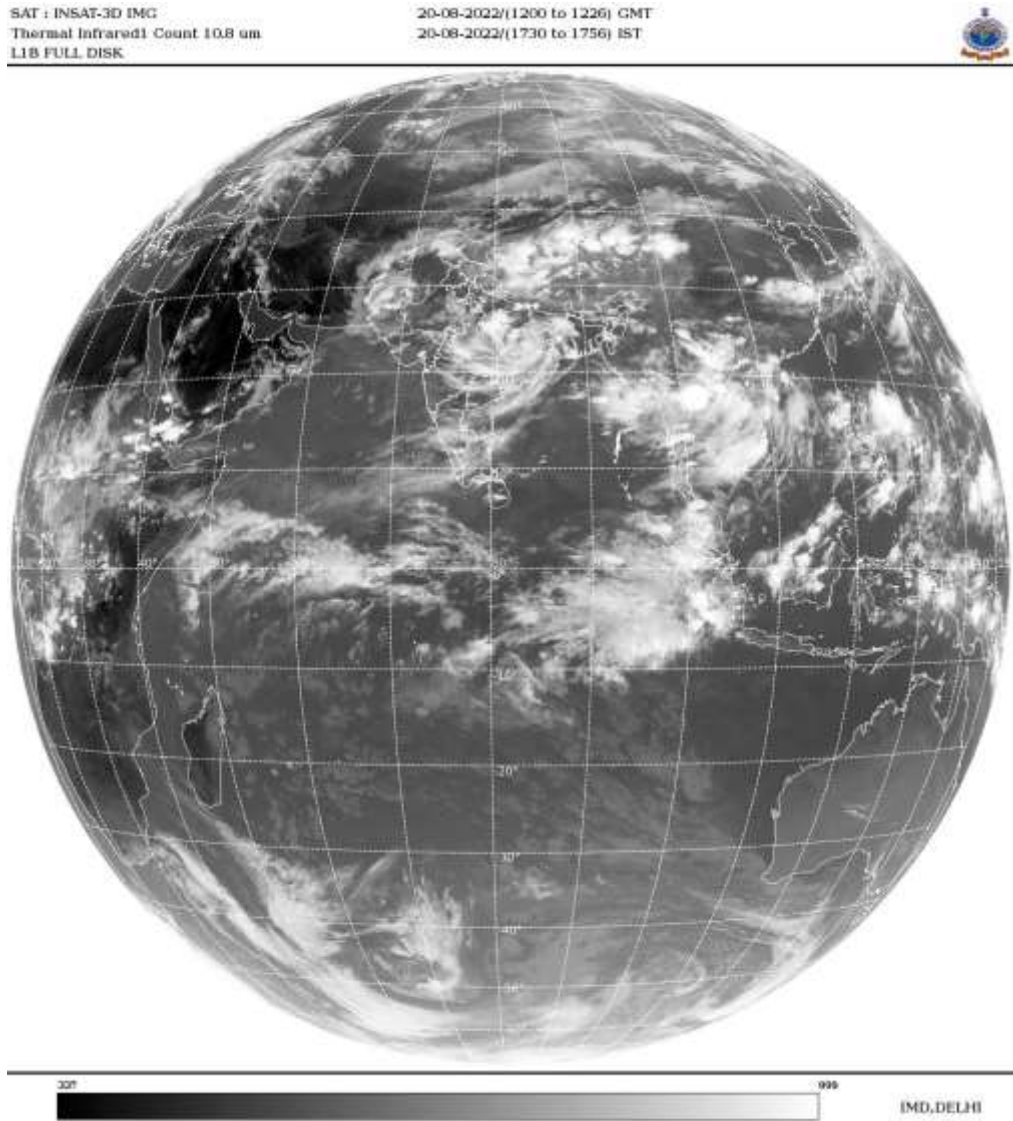
ARABIAN SEA:-

SCT LOW/MED CLOUDS WITH EMBDD MOD TO INT CONVTN OVER EC ARSEA OFF KRNTK COAST SE ARSEA OFF KER COAST COMORIN AREA AND ISOL WK TO MOD CONVTN REST ARSEA LKSDP ILS AREA (.)

BAY OF BENGAL & ANDAMAN SEA:-

SCT LOW/MED CLOUDS WITH EMBDD INT TO V INT CONVTN OVER NE BAY EC BAY AND ARAKAN COAST AND TENASSERIM COAST (.) SCT LOW/MED CLOUDS WITH EMBDD MOD TO INT CONVTN OVER WEST BAY ANDAMAN SEA AND GULF OF MARTABAN (.)

CLOUDS DESCRIPTION OUTSIDE INDIA:-



SCT LOW/MED CLOUDS WITH EMBDD MOD TO INT CONVTN OVER SRI LANKA PALK STR GULF OF MANNAR MALDIVES PAK NEPAL BHUTAN TIBET CHINA E CHINA SEA MYANMAR THAILAND GULF OF THIALAND CAMBODIA LAOS VIETNAM GULF OF TONKIN HAINAN SUMATRA STR OF MALACCA MALAYSIA BORNEO SOUTH CHINA SEA PHILIPPINES SULU SEA AND OVER INDIAN OCEAN BET LAT 5.0N TO 15.0S LONG 45.0E TO 105.0E (.)

TOO 20/1850 HRS IST=

NNNN

LEGEND:-

REGION	NORTH	J&K HP PJB HARY DLH UP UTRKND
	EAST	BHR JHRKND CHTGH OR WB SKM NORTH- EAST STATES
	WEST	RAJ MP GUJ MAHA GOA
	SOUTH	TLNGN AP KRNTK KER TN LKSDP ANDAMAN & NICOBAR ILS

CLOUD DISTRIBUTION	ISOL	ISOLATED (LESS THAN 25%)	
	SCT	SCATTERED (25 TO 50%)	
	BKN	BROKEN (51 TO 75%)	
	SLD	SOLID (GREATER THAN 75%)	
CLOUDS TOP TEMPERATURE	CTT	CLOUD TOP TEMPERATURE	
CONVECTION	WK CONVTN	WEAK CONVECTION (CTT GREATER THAN -25°C)	
	MOD CONVTN	MODERATE CONVECTION (CTT BETWEEN -25°C TO -40°C)	
	INT CONVTN	INTENSE CONVECTION (CTT BETWEEN -41°C TO -70°C)	
	V INT CONVTN	VERY INTENSE CONVECTION (CTT LESS THAN -70°C)	
METEOROLOGICAL SUB-DIVISIONS, STATES & UNION TERRITORIES	ARUPR	ARUNACHAL PRADESH	
	BHR	BIHAR	
	CHTGH	CHHATTISGARH	
	COTL AP	COASTAL ANDHRA PRADESH	
	COTL KRNTK	COASTAL KARNATAKA	
	COTL ORS	COASTAL ORISSA	
	GUJ	GUJARAT	
	GWB	GANGETIC WEST BENGAL	
	HARY	HARYANA	
	DLH	DELHI	
	HP	HIMACHAL PRADESH	
	J&K	JAMMU AND KASHMIR	
	JHRKND	JHARKHAND	
	KER	KERALA	
	KKN	KONKAN	
	LKSDP	LAKSHADWEEP	
	M MAHA	MADHYA MAHARASHTRA	
	MAHA	MAHARASHTRA	
	MANI	MANIPUR	
	MEGHA	MEGHALAYA	
	MIZO	MIZORAM	
	MP	MADHYA PRADESH	
		MRTHWD	MARATHWADA
		NAGA	NAGALAND
N COTL AP		NORTH COASTAL ANDHRA PRADESH	
NIK		NORTH INTERIOR KARNATAKA	
ORS		ORISSA	
PJB		PUNJAB	
RAJ		RAJASTHAN	
RYLSM		RAYALASEEMA	
SAU & KUTCH		SAURASHTRA & KUTCH	
SHWB		SUB-HIMALAYAN WEST BENGAL	
SIK		SOUTH INTERIOR KARNATAKA	
SKM		SIKKIM	

	TLNGN	TELANGANA
	TN	TAMIL NADU
	TRP	TRIPURA
	UP	UTTAR PRADESH
	UTRKND	UTTARAKHAND
	VID	VIDHARBHA
	SHWB	SUB HIMALAYAN WEST BENGAL
	GWB	GANGETIC WEST BENGAL
	ARSEA	ARABIAN SEA
	ILS	ISLANDS
MISCELLANEOUS	ASSW	IN ASSOCIATION WITH
	ASSTD	ASSOCIATED
	LLC	LOW LEVEL CIRCULATION
	EMBDD	EMBEDDED
	N/HOOD	NEIGHBOURHOOD
	EXT	EXTREME