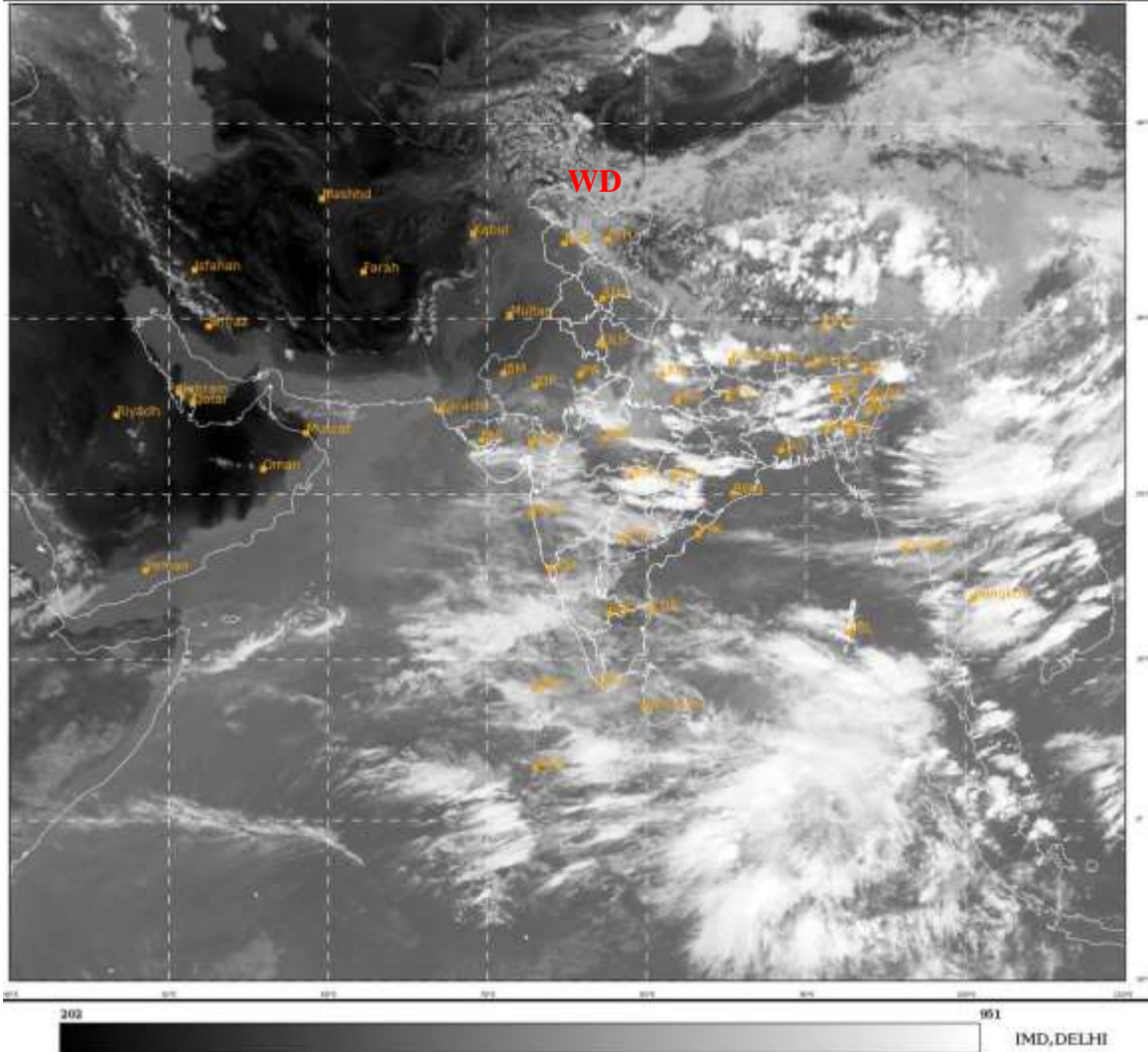




**SATELLITE BULLETIN BASED ON SATELLITE**  
**IMAGERIES AND PRODUCTS**  
**10.08.2021 TIME 0900 UTC**

SAT : INSAT-3D IMG  
IMG\_TIR1 10.8 um  
LIC Mercator

10-08-2021/(0900 to 0926) GMT  
10-08-2021/(1430 to 1456) IST



ZCZC 090

TCIN50 DEMS 100900

SATELLITE BULLETIN BASED ON INSAT-3D PIC OF 100900 UTC (.)

REGION COVERED BETWEEN LAT 50.0°N TO 30.0°S AND LONG 40.0°E TO 125.0°E (.)

**SALIENT FEATURES:-**

**WESTERN DISTURBANCE (WD):-**

SCT MULTILAYERED CLOUDS OVER LADAKH N TIBET ADJ CHINA IN ASSW **WD** OVER THE AREA (.)

**CLOUDS DESCRIPTION WITHIN INDIA:-**

**NORTH:-**

SCT LOW/MED CLOUDS WITH EMBDD MOD TO INT CONVTN OVER NE UP AND ISOL WK TO MOD CONVTN OVER LADAKH J&K N HP E UTRKND CENTRAL & SW UP (.) SCT LOW/MED CLOUDS OVER REST UTRKND (.)

**EAST:-**

SCT LOW/MED CLOUDS WITH EMBDD MOD TO INT CONVTN OVER CHTGH E BHR W ORS SHWB W MEGHA EXT NE ASSAM ADJ N NAGA & BD (.) SCT LOW/MED CLOUDS WITH EMBDD ISOL WK TO MOD OVER REST BHR JHRKND C GWB SKM REST ARUPR REST ASSAM TRP (.) SCT LOW/MED CLOUDS OVER REST PARTS OF THE REGION (.)

**WEST:-**

SCT LOW/MED CLOUDS WITH EMBDD MOD TO INT CONVTN OVER MP VID M MAHA MRTWD S GUJ AND ISOL WK TO MOD CONVTN OVER SE RAJ REST GUJ & KKN GOA (.) SCT LOW/MED CLOUDS OVER REST S RAJ (.)

**SOUTH:-**

SCT LOW/MED CLOUDS WITH EMBDD ISOL MOD TO INT CONVTN OVER TLNGN W RYLSM KRNTK LKSDP ANDAMAN & NICOBAR ILS (.) SCT LOW/MED CLOUDS WITH EMBDD ISOL WK TO MOD CONVTN OVER KER TN (.)

**ARABIAN SEA:-**

SCT LOW/MED CLOUDS WITH EMBDD MOD TO INT CONVTN OVER SE ARSEA LKSDP ILS AND ISOL WK TO MOD CONVTN OVER EC ARSEA & SW ARSEA (.)

**BAY OF BENGAL & ANDAMAN SEA:-**

SCT LOW/MED CLOUDS WITH EMBDD MOD TO INT CONVTN OVER S BAY S ANDAMAN SEA (.)

**CLOUDS DESCRIPTION OUTSIDE INDIA:-**

SCT LOW/MED CLOUDS WITH EMBDD MOD TO INT CONVTN OVER MALDIVES NEPAL TIBET CHINA MYANMAR THAILAND GULF OF THAILAND CAMBODIA LAOS VIETNAM SUMATRA STR OF MALACCA MALAY PENINSULA BORNEO SOUTH CHINA SEA CELEBES ILS & SEA PHILIPPINES HAINAN TAIWAN E CHINA SEA YELLOW SEA AND OVER INDIAN OCEAN BET LAT 5.0N TO 11.0S LONG 65.0E TO 101.0E (.)

TOO 10/1530EF=

NNNN

**LEGEND:-**

|        |       |   |
|--------|-------|---|
| REGION | NORTH | J&K HP PJB HARY DLH UP UTRKND                     |
|        | EAST  | BHR JHRKND CHTGH ORS WB SKMNORTH- EAST STATES     |
|        | WEST  | RAJ MP GUJ MAHA GOA                               |
|        | SOUTH | TLNGN AP KRNTK KER TN LKSDP ANDAMAN & NICOBAR ILS |

|                        |              |  |
|------------------------|--------------|--|
| CLOUD DISTRIBUTION     | ISOL         | ISOLATED (LESS THAN 25%)                         |
|                        | SCT          | SCATTERED (25 TO 50%)                            |
|                        | BKN          | BROKEN (51 TO 75%)                               |
|                        | SLD          | SOLID (GREATER THAN 75%)                         |
| CLOUDS TOP TEMPERATURE | CTT          | CLOUD TOP TEMPERATURE                            |
| CONVECTION             | WK CONVTN    | WEAK CONVECTION (CTT GREATER THAN -25°C)         |
|                        | MOD CONVTN   | MODERATE CONVECTION (CTT BETWEEN -25°C TO -40°C) |
|                        | INT CONVTN   | INTENSE CONVECTION (CTT BETWEEN -41°C TO -70°C)  |
|                        | V INT CONVTN | VERY INTENSE CONVECTION (CTT LESS THAN -70°C)    |

|   |                   |                                     |                   |
|---|-------------------|-------------------------------------|-------------------|
| <b>METEOROLOGICAL SUB-DIVISIONS, STATES &amp; UNION TERRITORIES</b> | <b>ARUPR</b>      | <b>ARUNACHAL PRADESH</b>            |                   |
|   | <b>BHR</b>        | <b>BIHAR</b>                        |                   |
|   | <b>CHTGH</b>      | <b>CHHATTISGARH</b>                 |                   |
|   | <b>COTL AP</b>    | <b>COASTAL ANDHRA PRADESH</b>       |                   |
|   | <b>COTL KRNTK</b> | <b>COASTAL KARNATAKA</b>            |                   |
|   | <b>COTL ORS</b>   | <b>COASTAL ORISSA</b>               |                   |
|   | <b>GUJ</b>        | <b>GUJARAT</b>                      |                   |
|   | <b>GWB</b>        | <b>GANGETIC WEST BENGAL</b>         |                   |
|   | <b>HARY</b>       | <b>HARYANA</b>                      |                   |
|   | <b>DLH</b>        | <b>DELHI</b>                        |                   |
|   | <b>HP</b>         | <b>HIMACHAL PRADESH</b>             |                   |
|   | <b>J&amp;K</b>    | <b>JAMMU AND KASHMIR</b>            |                   |
|   | <b>JHRKND</b>     | <b>JHARKHAND</b>                    |                   |
|   | <b>KER</b>        | <b>KERALA</b>                       |                   |
|   | <b>KKN</b>        | <b>KONKAN</b>                       |                   |
|   | <b>LKSDP</b>      | <b>LAKSHADWEEP</b>                  |                   |
|   | <b>M MAHA</b>     | <b>MADHYA MAHARASHTRA</b>           |                   |
|   | <b>MAHA</b>       | <b>MAHARASHTRA</b>                  |                   |
|   | <b>MANI</b>       | <b>MANIPUR</b>                      |                   |
|   | <b>MEGHA</b>      | <b>MEGHALAYA</b>                    |                   |
|   | <b>MIZO</b>       | <b>MIZORAM</b>                      |                   |
|   | <b>MP</b>         | <b>MADHYA PRADESH</b>               |                   |
|   |                   | <b>MRTHWD</b>                       | <b>MARATHWADA</b> |
|   |                   | <b>NAGA</b>                         | <b>NAGALAND</b>   |
| <b>N COTL AP</b>  |                   | <b>NORTH COASTAL ANDHRA PRADESH</b> |                   |
| <b>NIK</b>  |                   | <b>NORTH INTERIOR KARNATAKA</b>     |                   |
| <b>ORS</b>  |                   | <b>ORISSA</b>                       |                   |
| <b>PJB</b>  |                   | <b>PUNJAB</b>                       |                   |
| <b>RAJ</b>  |                   | <b>RAJASTHAN</b>                    |                   |
| <b>RYLSM</b>  |                   | <b>RAYALASEEMA</b>                  |                   |
| <b>SAU &amp; KUTCH</b>  |                   | <b>SAURASHTRA &amp; KUTCH</b>       |                   |
| <b>SHWB</b>   |                   | <b>SUB-HIMALAYAN WEST BENGAL</b>    |                   |
| <b>SIK</b>  |                   | <b>SOUTH INTERIOR KARNATAKA</b>     |                   |
| <b>SKM</b>  |                   | <b>SIKKIM</b>                       |                   |
| <b>TLNGN</b>  |                   | <b>TELANGANA</b>                    |                   |
| <b>TN</b>   |                   | <b>TAMIL NADU</b>                   |                   |
| <b>TRP</b>  |                   | <b>TRIPURA</b>                      |                   |
| <b>UP</b>   |                   | <b>UTTAR PRADESH</b>                |                   |
| <b>UTRKN</b>  |                   | <b>UTTARAKHAND</b>                  |                   |
| <b>VID</b>  |                   | <b>VIDHARBHA</b>                    |                   |
| <b>SHWB</b>   |                   | <b>SUB HIMALAYAN WEST BENGAL</b>    |                   |
| <b>GWB</b>  |                   | <b>GANGETIC WEST BENGAL</b>         |                   |
| <b>ARSEA</b>  |                   | <b>ARABIAN SEA</b>                  |                   |
|   | <b>ILS</b>        | <b>ISLANDS</b>                      |                   |
| <b>MISCELLANEOUS</b>  | <b>ASSW</b>       | <b>IN ASSOCIATION WITH</b>          |                   |

|               |                              |
|---------------|------------------------------|
| <b>ASSTD</b>  | <b>ASSOCIATED</b>            |
| <b>LLC</b>    | <b>LOW LEVEL CIRCULATION</b> |
| <b>EMBDD</b>  | <b>EMBEDDED</b>              |
| <b>N/HOOD</b> | <b>NEIGHBOURHOOD</b>         |
| <b>EXT</b>    | <b>EXTREME</b>               |