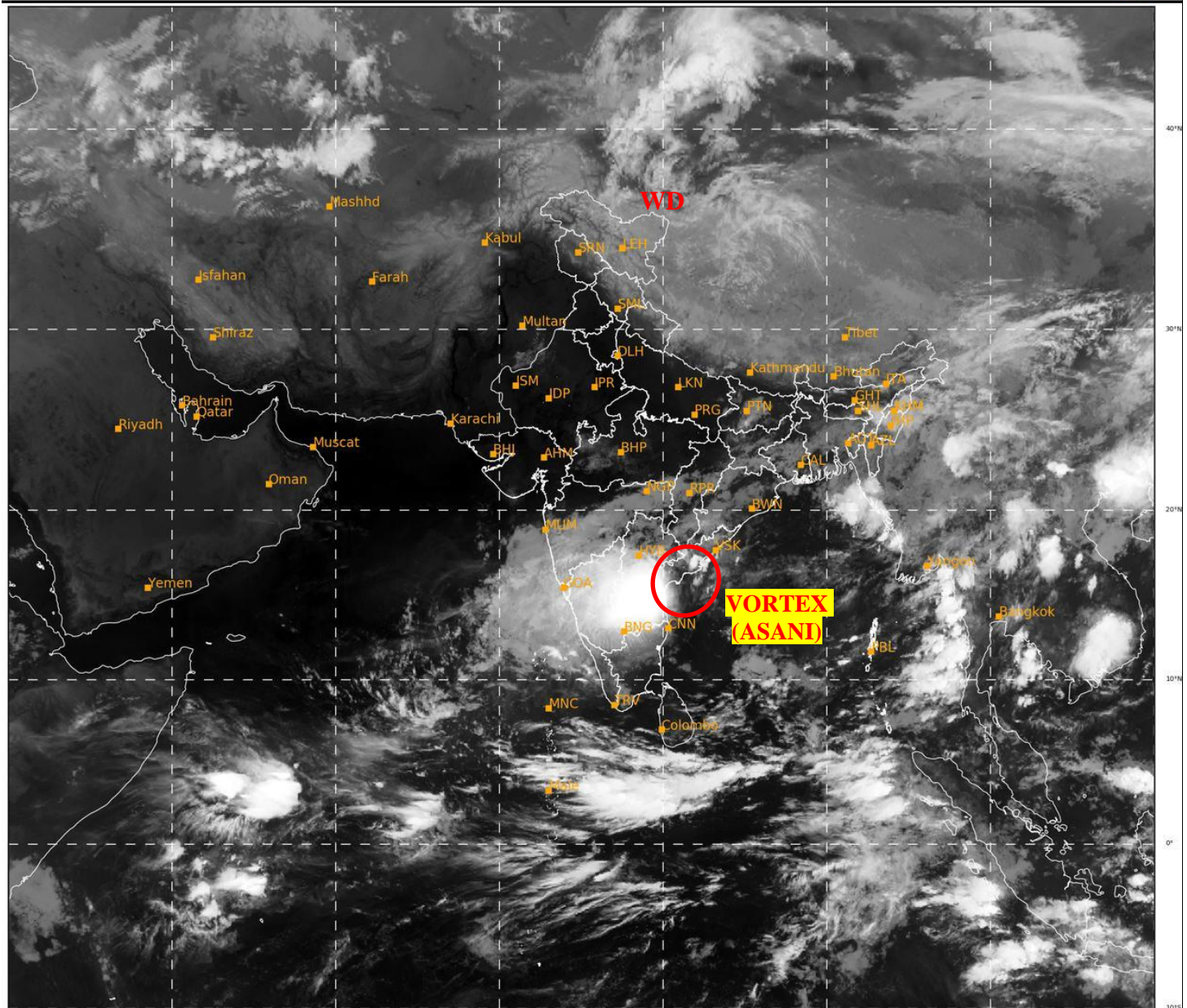




**SATELLITE BULLETIN BASED ON SATELLITE
IMAGERIES AND PRODUCTS**
12.05.2022 TIME 0000 UTC

SAT : INSAT-3D IMG
IMG_TIR1 10.8 um
LIC Mercator

12-05-2022/(0000 to 0026) GMT
12-05-2022/(0530 to 0556) IST



495

936

IMD, DELHI

TCIN50 DEMS 120000

SATELLITE BULLETIN BASED ON INSAT-3D PIC OF 120000 UTC (.)

REGION COVERED BETWEEN LAT 50.0°N TO 30.0°S AND LONG 40.0°E TO 125.0°E (.)

SALIENT FEATURES:-

VORTEX (ASANI) OVER CENTRAL COASTAL ANDHRA PRADESH & N/HOOD:-

VORTEX (ASANI) OVER CENTRAL COTL ANDHRA PRADESH (.) **OVERLAND** (.) CENTRE IS NOT CLEARLY DEFINED IN THE IR IMAGERY (.) ASSTD BKN LOW/MED CLOUDS WITH EMBDD INTENSE TO VERY INTENSE CONVECTION OVER RYLSM COTL AP E KRNTK (MINIMUM CTT MINUS **93** DEG C) AND SCT MOD TO INT CONVTN OVER N COTL AP AND WC BAY OFF AP COAST MINIMUM CTT MINUS **70** DEG C) (.)

WESTERN DISTURBANCE (WD):-

SCT MULTILAYERED CLOUDS OVER LADAKH W TIBET ADJ CHINA IN ASSW **WD** OVER THE AREA (.)

THUNDERSTORM / CONVECTIVE ACTIVITY:-

THUNDERSTORM / CONVECTIVE ACTIVITIES OBSERVED OVER KRNTK TLNGN RYLSM COTL AP (.)

DUST:-

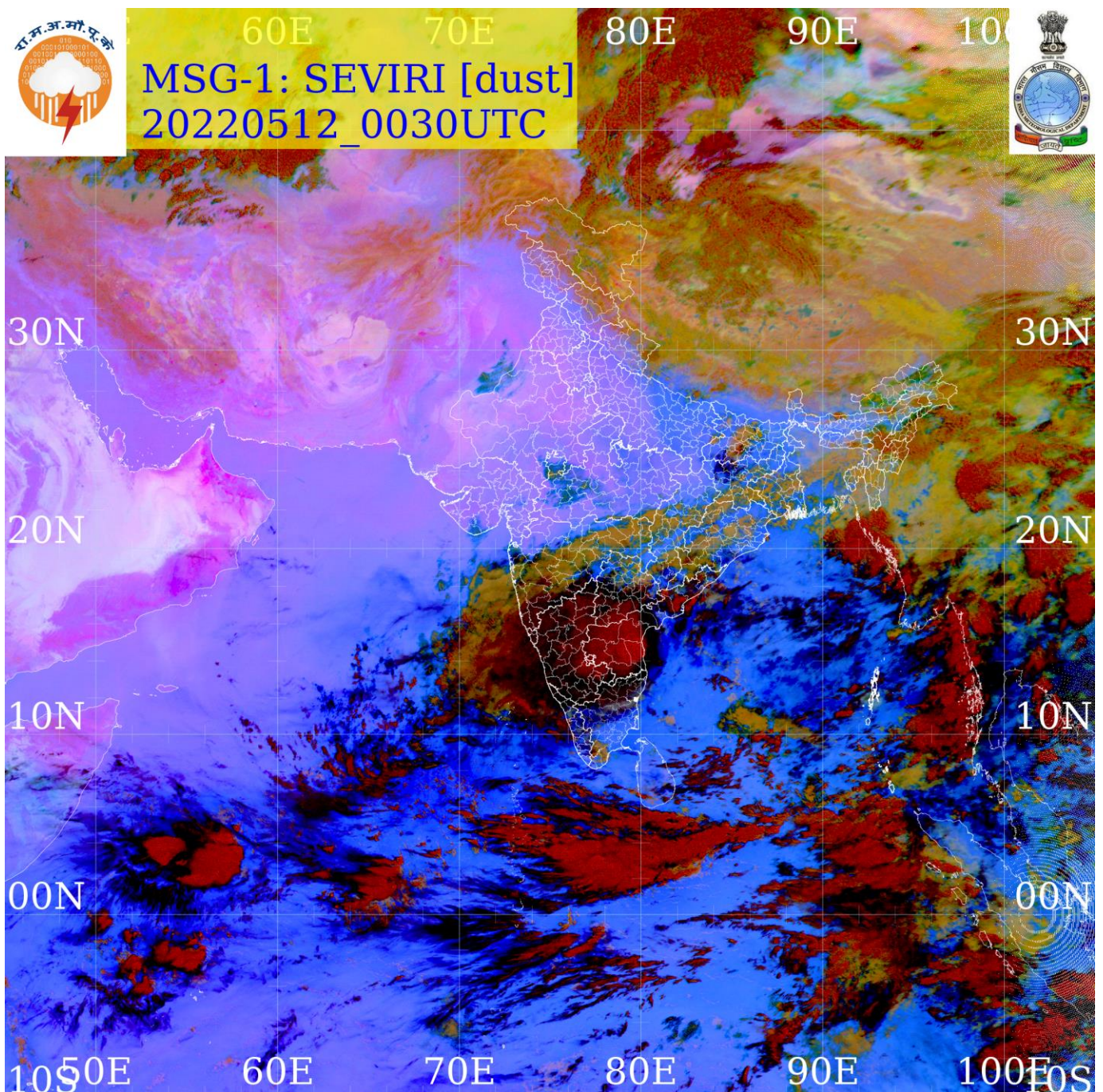
DUST PRODUCT OF METEOSAT-8 AT 00:30 UTC INDICATES DUST AT ISOLATED PLACES OVER PJB HARY W UP RAJ GUJ MP (.)

PRECIPITATION NOWCASTING:-

(BASED ON SCOPE NOWCASTING TOOL AT 0000 UTC AT A LEAD TIME OF 03 HRS (MM/HR):-

RAINFALL UPTO 15-20 MM LIKELY OVER RYLSM COTL AP (.)

RAINFALL UPTO 0.5-5 MM LIKELY OVER SC ASSAM SC BHR ADJ NC JHRKND SOUTH MADHYA MAHA S KKN GOA N LKSDP ILS (.)





INSAT-3D 12-MAY-2022 00:00 WV IMG

WATER VAPOUR WIND

(1Kt = 0.5 m/s)

10 Kt

15 Kt

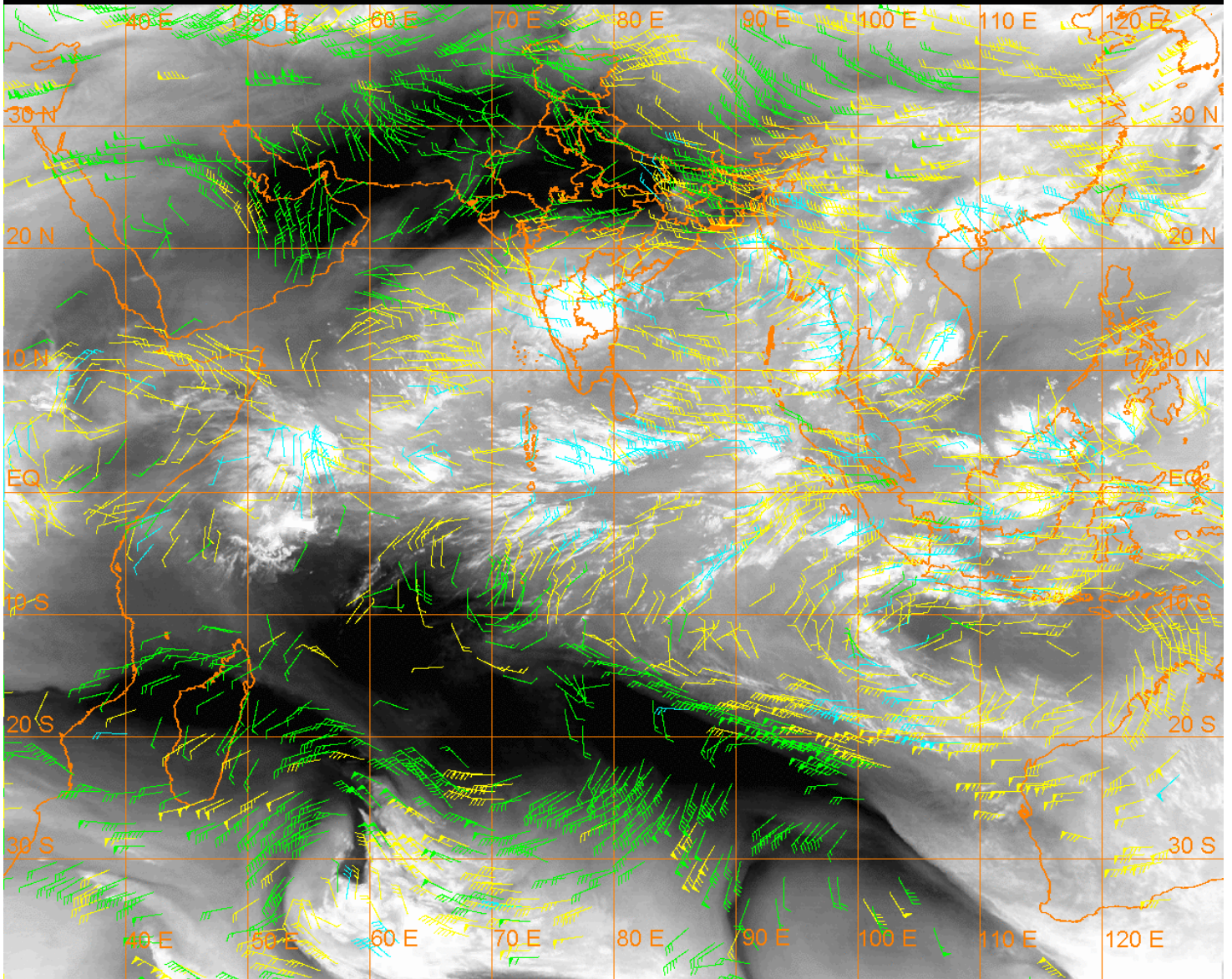
20 Kt

50 Kt

100-250 hPa

251-350 hPa

351-500 hPa



CLOUDS DESCRIPTION WITHIN INDIA:-

NORTH:-

SCT LOW/MED CLOUDS WITH EMBDD ISOL WK CONVTN OVER LADAKH (.) SCT LOW/MED CLOUDS OVER J&K HP UTRKND E UP (.)

EAST:-

SCT LOW/MED CLOUDS WITH EMBDD WK TO MOD CONVTN OVER CHTGH ORS BHR JHRKND GWB NE STATES & BD (.) SCT LOW/MED CLOUDS OVER SHWB SKM (.)

WEST:-

SCT LOW/MED CLOUDS WITH EMBDD MOD TO INT CONVTN OVER MRTHWD SOUTH MADHYA MAHA S KKN GOA AND WK TO MOD CONVTN OVER MAHA (.) SCT LOW/MED CLOUDS OVER S MP S GUJ (.)

SOUTH:-

BKN LOW/MED CLOUDS WITH EMBDD INT TO V INT CONVTN OVER S TLNGN COTL AP RYLSM E KRNTK (MINIMUM CTT MINUS 93 DEG C) (.) SCT LOW/MED CLOUDS WITH EMBDD MOD TO INT CONVTN OVER REST KRNTK AND WK TO MOD CONVTN OVER N TLNGN KER TN LKSDP ILS ANDAMAN & NICOBAR ILS (.)

ARABIAN SEA:-

SCT LOW/MED CLOUDS WITH EMBDD MOD TO INT CONVTN OVER S ARSEA EC ARSEA & COMORIN AREA (.)

BAY OF BENGAL & ANDAMAN SEA:-

SCT LOW/MED CLOUDS WITH EMBDD INT TO V INT CONVTN OVER NE BAY E ANDAMAN SEA
 (.) SCT LOW/MED CLOUDS WITH EMBDD MOD TO INT CONVTN OVER WC BAY OFF AP COAST
 S BAY REST ANDAMAN SEA AND ISOL WK TO CONVTN OVER REST BAY (.)

CLOUDS DESCRIPTION OUTSIDE INDIA:-

SCT LOW/MED CLOUDS WITH EMBDD MOD TO INT CONVTN OVER MALDIVES TIBET CHINA
 MYANMAR N THAILAND GULF OF THAILAND CAMBODIA LAOS VIETNAM SUMATRA STR OF
 MALACCA MALAY PENISULA BORNEO SOUTH CHINA SEA JAVA ILS & SEA CELEBES ILS &
 SEA S PHILIPPINES TAIWAN E CHINA SEA YELLOW SEA AND OVER INDIAN OCEAN BET LAT
 5.0N TO 10.0S LONG 50.0E TO 110.0E AND BET LAT 10.0S TO 30.0S LONG 100.0E TO 115.0E (.)

TOO 12/0650 HRS IST=

NNNN

LEGEND:-

REGION	NORTH	J&K HP PJB HARY DLH UP UTRKND
	EAST	BHR JHRKND CHTGH OR WB SKM NORTH- EAST STATES
	WEST	RAJ MP GUJ MAHA GOA
	SOUTH	TLNGN AP KRNTK KER TN LKSDP ANDAMAN & NICOBAR ILS

CLOUD DISTRIBUTION	ISOL	ISOLATED (LESS THAN 25%)
	SCT	SCATTERED (25 TO 50%)
	BKN	BROKEN (51 TO 75%)
	SLD	SOLID (GREATER THAN 75%)
CLOUDS TOP TEMPERATURE	CTT	CLOUD TOP TEMPERATURE
CONVECTION	WK CONVTN	WEAK CONVECTION (CTT GREATER THAN -25°C)
	MOD CONVTN	MODERATE CONVECTION (CTT BETWEEN -25°C TO -40°C)
	INT CONVTN	INTENSE CONVECTION (CTT BETWEEN -41°C TO -70°C)
	V INT CONVTN	VERY INTENSE CONVECTION (CTT LESS THAN -70°C)
METEOROLOGICAL SUB-DIVISIONS, STATES & UNION TERRITORIES	ARUPR	ARUNACHAL PRADESH
	BHR	BIHAR
	CHTGH	CHHATTISGARH
	COTL AP	COASTAL ANDHRA PRADESH
	COTL KRNTK	COASTAL KARNATAKA
	COTL ORS	COASTAL ORISSA
	GUJ	GUJARAT
	GWB	GANGETIC WEST BENGAL
	HARY	HARYANA
	DLH	DELHI

	HP	HIMACHAL PRADESH
	J&K	JAMMU AND KASHMIR
	JHRKND	JHARKHAND
	KER	KERALA
	KKN	KONKAN
	LKSDP	LAKSHADWEEP
	M MAHA	MADHYA MAHARASHTRA
	MAHA	MAHARASHTRA
	MANI	MANIPUR
	MEGHA	MEGHALAYA
	MIZO	MIZORAM
	MP	MADHYA PRADESH
	MRTHWD	MARATHWADA
	NAGA	NAGALAND
	N COTL AP	NORTH COASTAL ANDHRA PRADESH
	NIK	NORTH INTERIOR KARNATAKA
	ORS	ORISSA
	PJB	PUNJAB
	RAJ	RAJASTHAN
	RYLSM	RAYALASEEMA
	SAU & KUTCH	SAURASHTRA & KUTCH
	SHWB	SUB-HIMALAYAN WEST BENGAL
	SIK	SOUTH INTERIOR KARNATAKA
	SKM	SIKKIM
	TLNGN	TELANGANA
	TN	TAMIL NADU
	TRP	TRIPURA
	UP	UTTAR PRADESH
	UTRKN	UTTARAKHAND
	VID	VIDHARBHA
	SHWB	SUB HIMALAYAN WEST BENGAL
	GWB	GANGETIC WEST BENGAL
	ARSEA	ARABIAN SEA
	ILS	ISLANDS
MISCELLANEOUS	ASSW	IN ASSOCIATION WITH
	ASSTD	ASSOCIATED
	LLC	LOW LEVEL CIRCULATION
	EMBDD	EMBEDDED
	N/HOOD	NEIGHBOURHOOD
	EXT	EXTREME