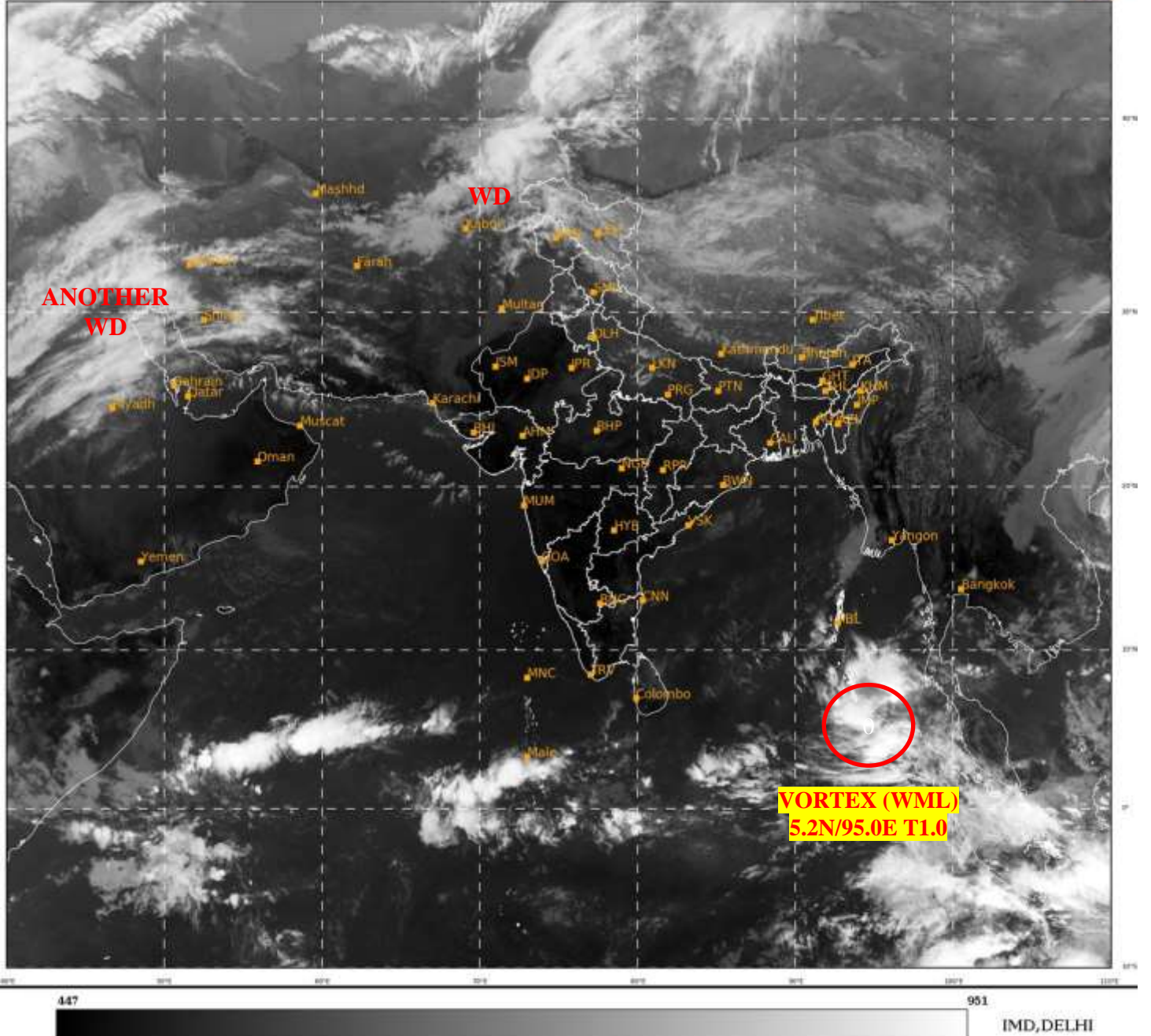




**SATELLITE BULLETIN BASED ON SATELLITE  
IMAGERIES AND PRODUCTS**  
**20.12.2021 TIME 0600 UTC**

SAT : INSAT-3D IMG  
IMG\_TIR1 10.8 um  
LIC Mercator

20-12-2021/(0600 to 0627) GMT  
20-12-2021/(1130 to 1157) IST



TCIN50 DEMS 200600

SATELLITE BULLETIN BASED ON INSAT-3D PIC OF 200600 UTC (.)

REGION COVERED BETWEEN LAT 50.0°N TO 30.0°S AND LONG 40.0°E TO 125.0°E (.)

**SALIENT FEATURES:-**

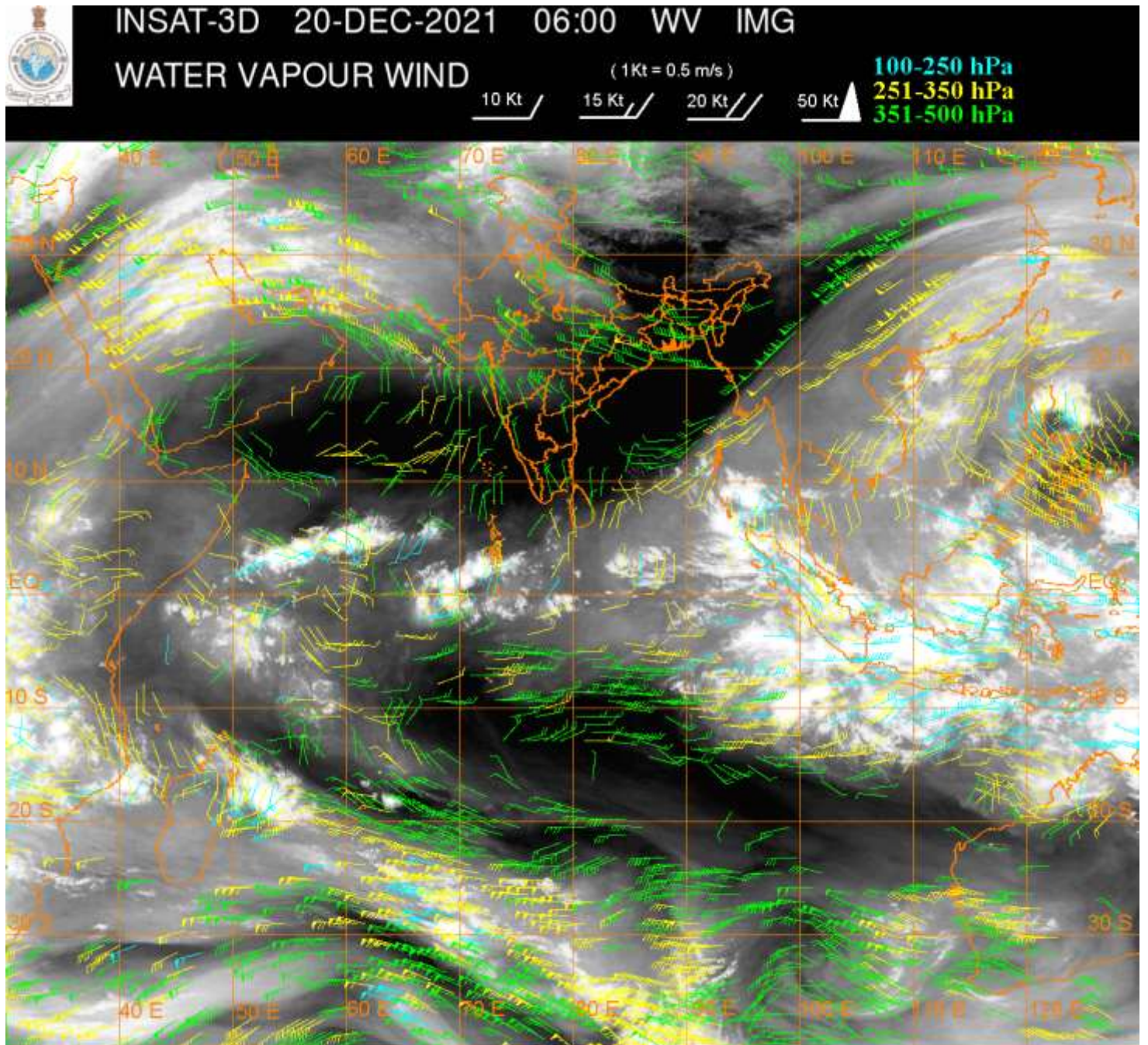
**VORTEX (WML) OVER S ANDAMAN SEA ADJ EQUATORIAL INDIAN OCEAN OFF NORTH SUMATRA COAST & N/HOOD:-**

VORTEX (WML) OVER S ANDAMAN SEA ADJ EQUATORIAL INDIAN OCEAN OFF N SUMATRA COAST & N/HOOD CENTERED WITHIN HALF A DEG OF **5.2N/95.0E** (.) INTENSITY **T1.0** (.) ASSTD SCT TO BKN LOW/MED CLOUDS WITH EMBDD INT TO V INT CONVTN OVER S ANDAMAN SEA ADJ EQUATORIAL INDIAN OCEAN OFF N SUMATRA COAST & N/HOOD (MINIMUM CTT MINUS **80** DEG C) (.)

**WESTERN DISTURBANCE (WD):-**

SCT MULTILAYERED CLOUDS OVER AFGAN N PAK J&K LADAKH AND N/HOOD IN ASSW **WD** OVER THE AREA (.)

**SCT MULTILAYERED CLOUDS OVER N SAUDI ARABIA W PERSIAN GULF S IRAN AND N/HOOD IN ASSW **ANOTHER WD** OVER THE AREA (.)**



**CLOUDS DESCRIPTION WITHIN INDIA:-**

**NORTH:-**

**SCT LOW/MED CLOUDS WITH EMBDD ISOL WK TO MOD CONVTN OVER LADAKH J&K (.) SCT LOW/MED CLOUDS OVER HP PJB N HARY UTRKND UP (.)**

**EAST:-**

**SCT LOW/MED CLOUDS OVER SHWB SKM NE STATES (.)**

**WEST:-**

**NO SIGNIFICANT CLOUDS OVER RAJ GUJ MP MAHA (.)**

**SOUTH:-**

**SCT LOW/MED CLOUDS WITH EMBDD MOD TO INT CONVTN OVER NICOBAR ILS AND ISOL WK TO MOD CONVTN OVER ANDAMAN ILS (.) SCT LOW/MED CLOUDS OVER COTL AP TN (.)**

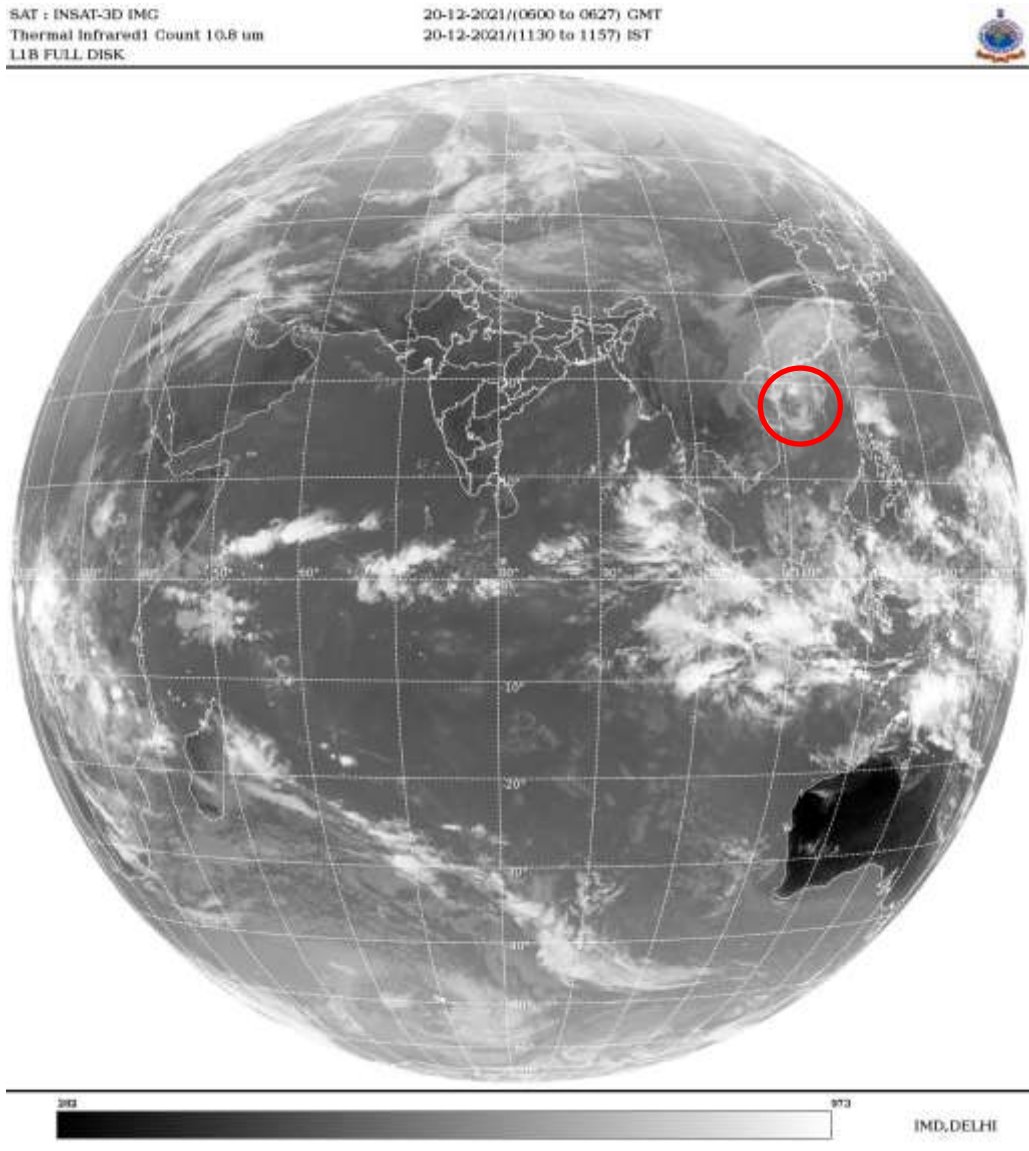
**ARABIAN SEA:-**

**NO SIGNIFICANT CLOUDS OVER THE REGION (.)**

**BAY OF BENGAL & ANDAMAN SEA:-**

**SCT TO BKN LOW/MED CLOUDS WITH EMBDD INT TO V INT CONVTN OVER S ANDAMAN SEA ADJ SE BAY AND ADJ EQUATORIAL INDIAN OCEAN OFF N SUMATRA COAST & N/HOOD (.)**

**CLOUDS DESCRIPTION OUTSIDE INDIA:-**



**VORTEX (RAI) OVER SOUTH CHINA SEA:-**

**VORTEX (RAI) OVER SOUTH CHINA SEA CENTERED NEAR 18.0N / 111.5E (.) INTENSITY T1.0/1.0(.) ASSTD BKN LOW/MED CLOUDS WITH EMBDD MOD TO INT CONVTN OVER AREA BET LAT 15.0N TO 22.0N LONG 110.0E TO 115.0E AND HAINAN (.)**

**SCT LOW/MED CLOUDS WITH EMBDD MOD TO INT CONVTN OVER S MALDIVES N PAK TIBET NW CHINA SUMATRA STR OF MALACCA SOUTH CHINA SEA HAINAN TAIWAN BORNEO JAVA ILS & SEA CELEBES ILS & SEA PHILIPPINES MOZAMBIQUE CHANNEL AND OVER INDIAN OCEAN BET LAT 5.0N TO 5.0S LONG 45.0E TO 100.0E AND BET LAT 5,0S TO 13.0S LONG 94.0E TO 120.0E (.)**

**TOO 20/1250EF=**

**NNNN**

**LEGEND:-**

REGION	NORTH	J&K HP PJB HARY DLH UP UTRKND
	EAST	BHR JHRKND CHTGH ORS WB SKM NORTH- EAST STATES
	WEST	RAJ MP GUJ MAHA GOA
	SOUTH	TLNGN AP KRNTK KER TN LKSDP ANDAMAN & NICOBAR ILS

<b>CLOUD DISTRIBUTION</b>	<b>ISOL</b>	<b>ISOLATED (LESS THAN 25%)</b>	
	<b>SCT</b>	<b>SCATTERED (25 TO 50%)</b>	
	<b>BKN</b>	<b>BROKEN (51 TO 75%)</b>	
	<b>SLD</b>	<b>SOLID (GREATER THAN 75%)</b>	
<b>CLOUDS TOP TEMPERATURE</b>	<b>CTT</b>	<b>CLOUD TOP TEMPERATURE</b>	
<b>CONVECTION</b>	<b>WK CONVTN</b>	<b>WEAK CONVECTION (CTT GREATER THAN -25°C)</b>	
	<b>MOD CONVTN</b>	<b>MODERATE CONVECTION (CTT BETWEEN -25°C TO -40°C)</b>	
	<b>INT CONVTN</b>	<b>INTENSE CONVECTION (CTT BETWEEN -41°C TO -70°C)</b>	
	<b>V INT CONVTN</b>	<b>VERY INTENSE CONVECTION (CTT LESS THAN -70°C)</b>	
<b>METEOROLOGICAL SUB-DIVISIONS, STATES &amp; UNION TERRITORIES</b>	<b>ARUPR</b>	<b>ARUNACHAL PRADESH</b>	
	<b>BHR</b>	<b>BIHAR</b>	
	<b>CHTGH</b>	<b>CHHATTISGARH</b>	
	<b>COTL AP</b>	<b>COASTAL ANDHRA PRADESH</b>	
	<b>COTL KRNTK</b>	<b>COASTAL KARNATAKA</b>	
	<b>COTL ORS</b>	<b>COASTAL ORISSA</b>	
	<b>GUJ</b>	<b>GUJARAT</b>	
	<b>GWB</b>	<b>GANGETIC WEST BENGAL</b>	
	<b>HARY</b>	<b>HARYANA</b>	
	<b>DLH</b>	<b>DELHI</b>	
	<b>HP</b>	<b>HIMACHAL PRADESH</b>	
	<b>J&amp;K</b>	<b>JAMMU AND KASHMIR</b>	
	<b>JHRKND</b>	<b>JHARKHAND</b>	
	<b>KER</b>	<b>KERALA</b>	
	<b>KKN</b>	<b>KONKAN</b>	
	<b>LKSDP</b>	<b>LAKSHADWEEP</b>	
	<b>M MAHA</b>	<b>MADHYA MAHARASHTRA</b>	
	<b>MAHA</b>	<b>MAHARASHTRA</b>	
	<b>MANI</b>	<b>MANIPUR</b>	
	<b>MEGHA</b>	<b>MEGHALAYA</b>	
	<b>MIZO</b>	<b>MIZORAM</b>	
	<b>MP</b>	<b>MADHYA PRADESH</b>	
		<b>MRTHWD</b>	<b>MARATHWADA</b>
		<b>NAGA</b>	<b>NAGALAND</b>
<b>N COTL AP</b>		<b>NORTH COASTAL ANDHRA PRADESH</b>	
<b>NIK</b>		<b>NORTH INTERIOR KARNATAKA</b>	
<b>ORS</b>		<b>ORISSA</b>	
<b>PJB</b>		<b>PUNJAB</b>	
<b>RAJ</b>		<b>RAJASTHAN</b>	
<b>RYLSM</b>		<b>RAYALASEEMA</b>	
<b>SAU &amp; KUTCH</b>		<b>SAURASHTRA &amp; KUTCH</b>	
<b>SHWB</b>		<b>SUB-HIMALAYAN WEST BENGAL</b>	
<b>SIK</b>		<b>SOUTH INTERIOR KARNATAKA</b>	
<b>SKM</b>		<b>SIKKIM</b>	

	<b>TLNGN</b>	<b>TELANGANA</b>
	<b>TN</b>	<b>TAMIL NADU</b>
	<b>TRP</b>	<b>TRIPURA</b>
	<b>UP</b>	<b>UTTAR PRADESH</b>
	<b>UTRKND</b>	<b>UTTARAKHAND</b>
	<b>VID</b>	<b>VIDHARBHA</b>
	<b>SHWB</b>	<b>SUB HIMALAYAN WEST BENGAL</b>
	<b>GWB</b>	<b>GANGETIC WEST BENGAL</b>
	<b>ARSEA</b>	<b>ARABIAN SEA</b>
	<b>ILS</b>	<b>ISLANDS</b>
<b>MISCELLANEOUS</b>	<b>ASSW</b>	<b>IN ASSOCIATION WITH</b>
	<b>ASSTD</b>	<b>ASSOCIATED</b>
	<b>LLC</b>	<b>LOW LEVEL CIRCULATION</b>
	<b>EMBDD</b>	<b>EMBEDDED</b>
	<b>N/HOOD</b>	<b>NEIGHBOURHOOD</b>
	<b>EXT</b>	<b>EXTREME</b>