

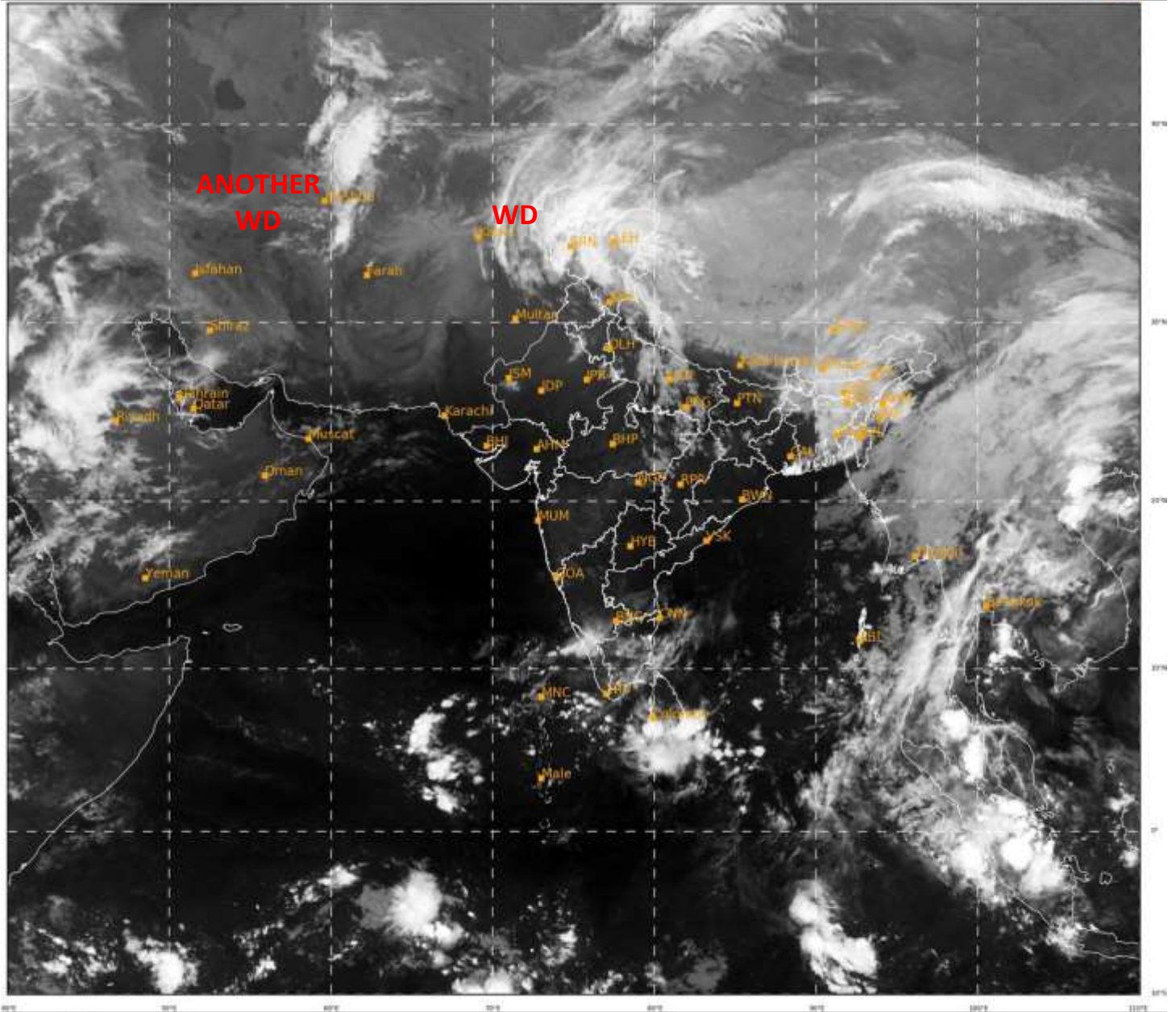


**SATELLITE BULLETIN BASED ON SATELLITE IMAGERIES  
AND PRODUCTS**

**17.04.2021 TIME 0000 UTC**

SAT : INSAT-3D IMG  
IMG\_TIR1 10.8 um  
LIC Mercator

17-04-2021/(0000 to 0026) GMT  
17-04-2021/(0530 to 0556) IST



513

946

IMD, DELHI

TCIN50 DEMS 170000

SATELLITE BULLETIN BASED ON INSAT-3D PIC OF 170000 UTC (.)

REGION COVERED BETWEEN LAT 50.0°N TO 30.0°S AND LONG 40.0°E TO 125.0°E (.)

**SALIENT FEATURES:-**

**WESTERN DISTURBANCE (WD):-**

SCT TO BKN MULTILAYERED CLOUDS OVER E AFGAN N PAK LADAKH J&K HP UTRKND UP TIBET ADJ CHINA AND N/HOOD IN ASSW **WD** OVER THE AREA (.)

SCT MULTILAYERED CLOUDS OVER TURKMENISTAN E IRAN AND N/HOOD IN ASSW **ANOTHER WD** OVER THE AREA (.)



INSAT-3DR 17-APR-2021 00:15 WV IMG

WATER VAPOUR WIND

( 1Kt = 0.5 m/s )

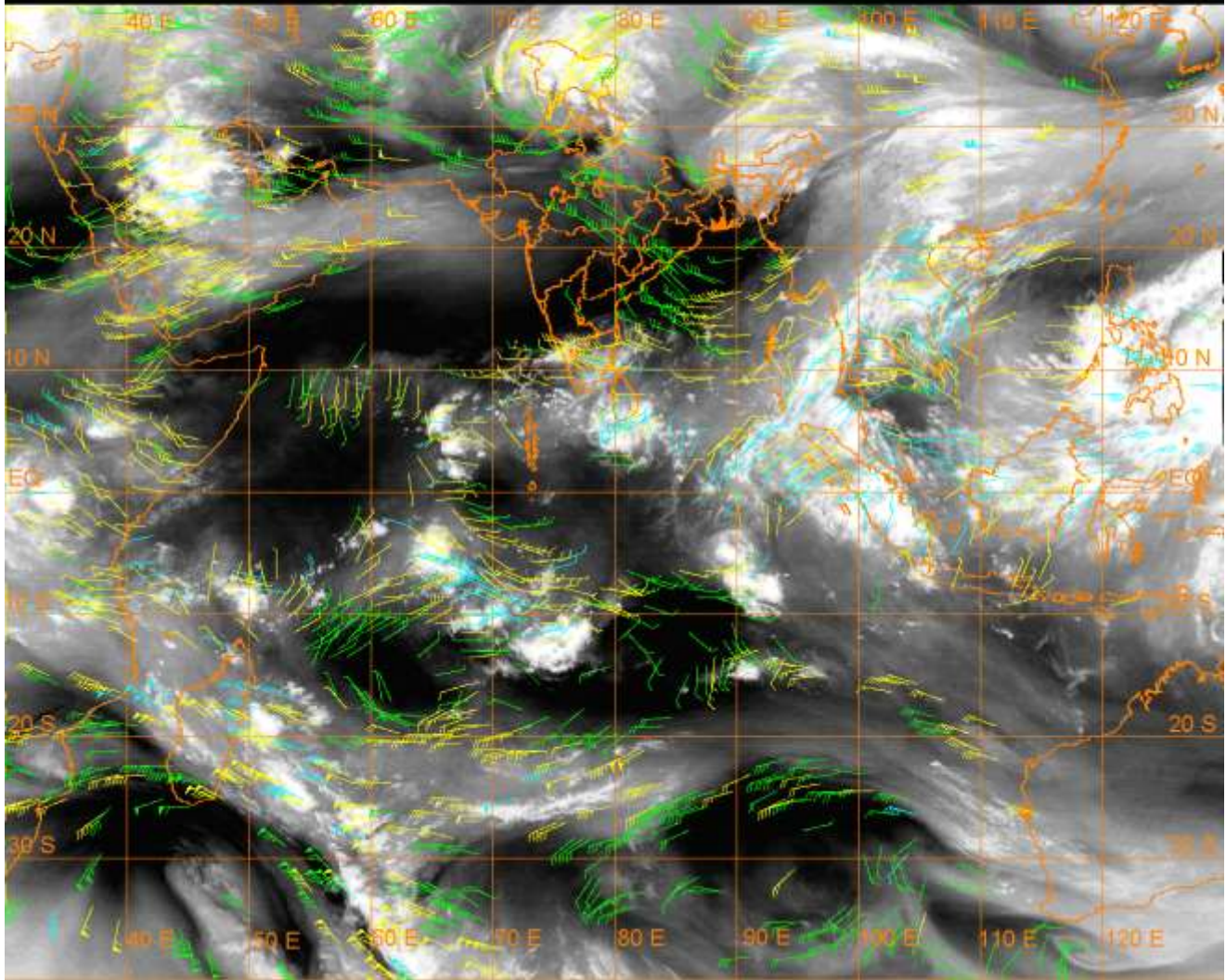
10 Kt

15 Kt

20 Kt

50 Kt

100-250 hPa  
251-350 hPa  
351-500 hPa



**CLOUDS DESCRIPTION WITHIN INDIA:-**

**NORTH:-**

SCT LOW/MED CLOUDS WITH EMBDD MOD TO INT CONVTN OVER J&K LADAKH N HP NE UTRKND (.) SCT LOW/MED CLOUDS WITH EMBDD WK TO MOD CONVTN OVER REST HP REST UTRKND C UP (.) SCT LOW/MED CLOUDS WITH EMBDD ISOL WK CONVTN OVER PJB W HARY REST UP (.)

**EAST:-**

SCT LOW/MED CLOUDS WITH EMBDD MOD CONVTN OVER SHWB ASSAM MEGHA W ARUPR NAGA N MANI N MIZO TRP & N & E BD (.) SCT LOW/MED CLOUDS WITH EMBDD ISOL WK CONVTN OVER BHR JHRKND N & W CHTGH W & SE GWB SKM REST ARUPR REST MANI REST MIZO (.)

**WEST:-**

SCT LOW/MED CLOUDS WITH EMBDD ISOL WK TO MOD CONVTN OVER EXT W & NE RAJ E MP NE VID (.) SCT LOW/MED CLOUDS OVER MRTHWD REST VID (.)

**SOUTH:-**

SCT LOW/MED CLOUDS WITH EMBDD MOD CONVTN OVER N KER ADJ SIK (.) SCT LOW/MED CLOUDS WITH EMBDD ISOL WK CONVTN OVER TN LKSDP ANDAMAN & NICOBAR ILS (.) SCT LOW/MED CLOUDS OVER REST KRNTK RYLSM S AP REST KER (.)

**ARABIAN SEA:-**

SCT LOW/MED CLOUDS WITH EMBDD INT TO V INT CONVTN OVER SC ARSEA AND MOD TO INT CONVTN OVER SE ARSEA & COMORIN (.)

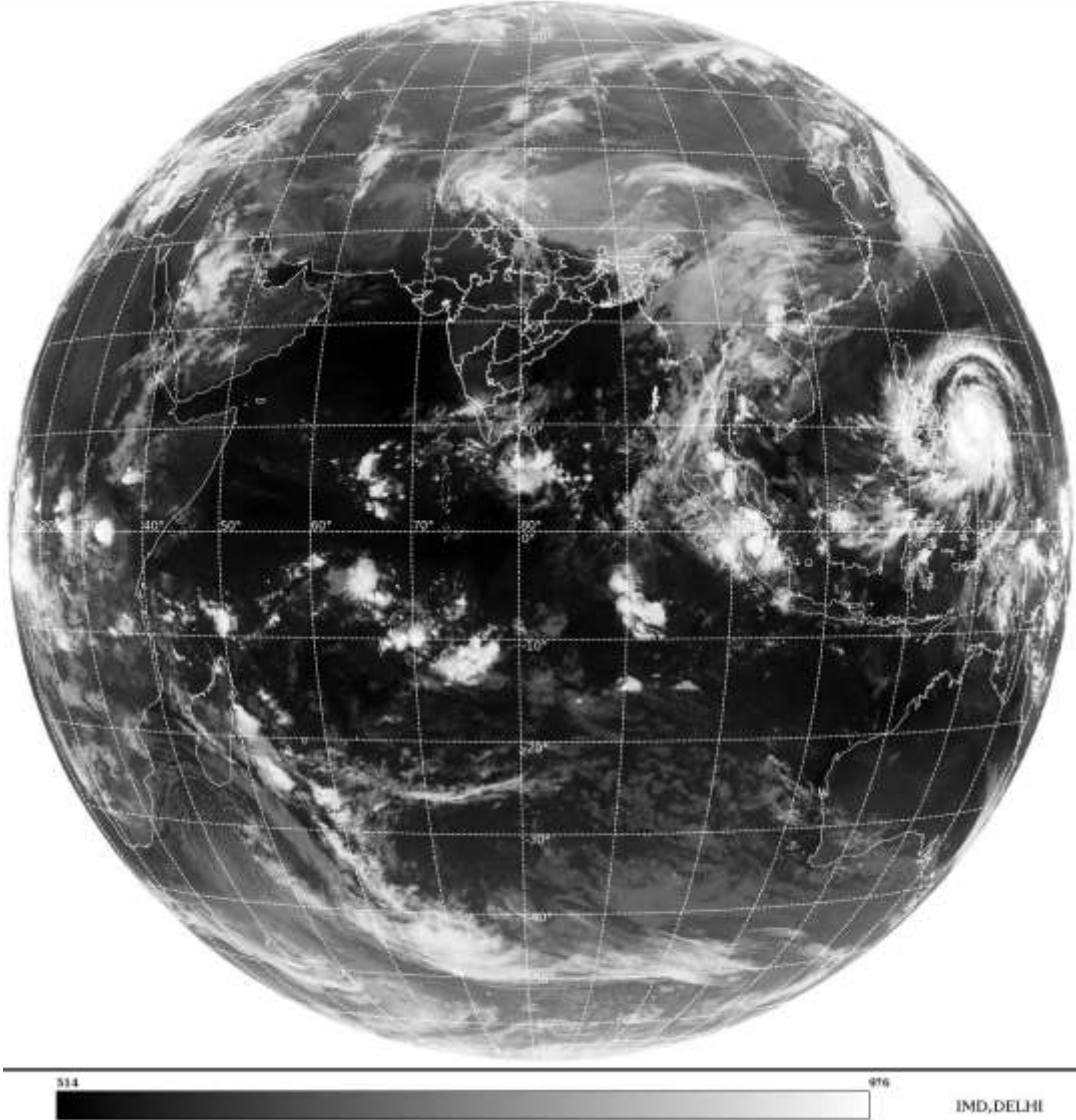
**BAY OF BENGAL & ANDAMAN SEA:-**

**SCT TO BKN LOW/MED CLOUDS WITH EMBDD INT TO V INT CONVTN OVER SW BAY & S ANDAMAN SEA (.) SCT LOW/MED CLOUDS WITH EMBDD MOD TO INT CONVTN OVER REST S BAY REST ANDAMAN SEA TENASSERIM COAST (.) SCT LOW/MED CLOUDS WITH EMBDD WK CONVTN OVER NE BAY (.)**

**CLOUDS DESCRIPTION OUTSIDE INDIA:-**

SAT : INSAT-3D IMG  
Thermal Infrared1 Count 10.8 um  
L1B FULL DISK

17-04-2021/(0000 to 0026) GMT  
17-04-2021/(0530 to 0556) IST



**SCT LOW/MED CLOUDS WITH EMBDD MOD TO INT CONVTN OVER S SRI LANKA N PAK NEPAL BHUTAN TIBET CHINA MYANMAR THAILAND CAMBODIA LAOS VIETNAM GULF OF THAILAND GULF OF TONKIN HAINAN SUMATRA STR OF MALACCA MALAY PENINSULA BORNEO CELEBES ILS & SEA SULU SEA PHILIPPINES MADAGASCAR MOZAMBIQUE CHANNEL AND OVER INDIAN OCEAN BET LAT 5.0N TO 15.0S LONG 43.0E TO 94.0E AND BET LAT 15.0S TO 30.0S LONG 50.0E TO 80.0E (.)**

**TOO 17/0655EF=**

**NNNN**

**LEGEND:-**

<b>REGION</b>	<b>NORTH</b>	<b>J&amp;K HP PJB HARY DLH UP UTRKND</b>
	<b>EAST</b>	<b>BHR JHRKND CHTGH ORS WB SKM NORTH-EAST STATES</b>
	<b>WEST</b>	<b>RAJ MP GUJ MAHA GOA</b>
	<b>SOUTH</b>	<b>TLNGN AP KRNTK KER TN LKSDP ANDAMAN &amp; NICOBAR ILS</b>

<b>CLOUD DISTRIBUTION</b>	<b>ISOL</b>	<b>ISOLATED (LESS THAN 25%)</b>
	<b>SCT</b>	<b>SCATTERED (25 TO 50%)</b>
	<b>BKN</b>	<b>BROKEN (51 TO 75%)</b>
	<b>SLD</b>	<b>SOLID (GREATER THAN 75%)</b>
<b>CLOUDS TOP TEMPERATURE</b>	<b>CTT</b>	<b>CLOUD TOP TEMPERATURE</b>
<b>CONVECTION</b>	<b>WK CONVTN</b>	<b>WEAK CONVECTION (CTT GREATER THAN -25°C)</b>
	<b>MOD CONVTN</b>	<b>MODERATE CONVECTION (CTT BETWEEN -25°C TO -40°C)</b>
	<b>INT CONVTN</b>	<b>INTENSE CONVECTION (CTT BETWEEN -41°C TO -70°C)</b>
	<b>V INT CONVTN</b>	<b>VERY INTENSE CONVECTION (CTT LESS THAN -70°C)</b>
<b>METEOROLOGICAL SUB-DIVISIONS, STATES &amp; UNION TERRITORIES</b>	<b>ARUPR</b>	<b>ARUNACHAL PRADESH</b>
	<b>BHR</b>	<b>BIHAR</b>
	<b>CHTGH</b>	<b>CHHATTISGARH</b>
	<b>COTL AP</b>	<b>COASTAL ANDHRA PRADESH</b>
	<b>COTL KRNTK</b>	<b>COASTAL KARNATAKA</b>
	<b>COTL ORS</b>	<b>COASTAL ORISSA</b>
	<b>GUJ</b>	<b>GUJARAT</b>
	<b>GWB</b>	<b>GANGETIC WEST BENGAL</b>
	<b>HARY</b>	<b>HARYANA</b>
	<b>DLH</b>	<b>DELHI</b>
	<b>HP</b>	<b>HIMACHAL PRADESH</b>
	<b>J&amp;K</b>	<b>JAMMU AND KASHMIR</b>
	<b>JHRKND</b>	<b>JHARKHAND</b>
	<b>KER</b>	<b>KERALA</b>
	<b>KKN</b>	<b>KONKAN</b>
	<b>LKSDP</b>	<b>LAKSHADWEEP</b>
	<b>M MAHA</b>	<b>MADHYA MAHARASHTRA</b>
	<b>MAHA</b>	<b>MAHARASHTRA</b>
	<b>MANI</b>	<b>MANIPUR</b>
	<b>MEGHA</b>	<b>MEGHALAYA</b>
<b>MIZO</b>	<b>MIZORAM</b>	
<b>MP</b>	<b>MADHYA PRADESH</b>	

	<b>MRTHWD</b>	<b>MARATHWADA</b>
	<b>NAGA</b>	<b>NAGALAND</b>
	<b>N COTL AP</b>	<b>NORTH COASTAL ANDHRA PRADESH</b>
	<b>NIK</b>	<b>NORTH INTERIOR KARNATAKA</b>
	<b>ORS</b>	<b>ORISSA</b>
	<b>PJB</b>	<b>PUNJAB</b>
	<b>RAJ</b>	<b>RAJASTHAN</b>
	<b>RYLSM</b>	<b>RAYALASEEMA</b>
	<b>SAU &amp; KUTCH</b>	<b>SAURASHTRA &amp; KUTCH</b>
	<b>SHWB</b>	<b>SUB-HIMALAYAN WEST BENGAL</b>
	<b>SIK</b>	<b>SOUTH INTERIOR KARNATAKA</b>
	<b>SKM</b>	<b>SIKKIM</b>
	<b>TLNGN</b>	<b>TELANGANA</b>
	<b>TN</b>	<b>TAMIL NADU</b>
	<b>TRP</b>	<b>TRIPURA</b>
	<b>UP</b>	<b>UTTAR PRADESH</b>
	<b>UTRKND</b>	<b>UTTARAKHAND</b>
	<b>VID</b>	<b>VIDHARBHA</b>
	<b>SHWB</b>	<b>SUB HIMALAYAN WEST BENGAL</b>
	<b>GWB</b>	<b>GANGETIC WEST BENGAL</b>
	<b>ARSEA</b>	<b>ARABIAN SEA</b>
	<b>ILS</b>	<b>ISLANDS</b>
<b>MISCELLANEOUS</b>	<b>ASSW</b>	<b>IN ASSOCIATION WITH</b>
	<b>ASSTD</b>	<b>ASSOCIATED</b>
	<b>LLC</b>	<b>LOW LEVEL CIRCULATION</b>
	<b>EMBDD</b>	<b>EMBEDDED</b>
	<b>N/HOOD</b>	<b>NEIGHBOURHOOD</b>
	<b>EXT</b>	<b>EXTREME</b>