

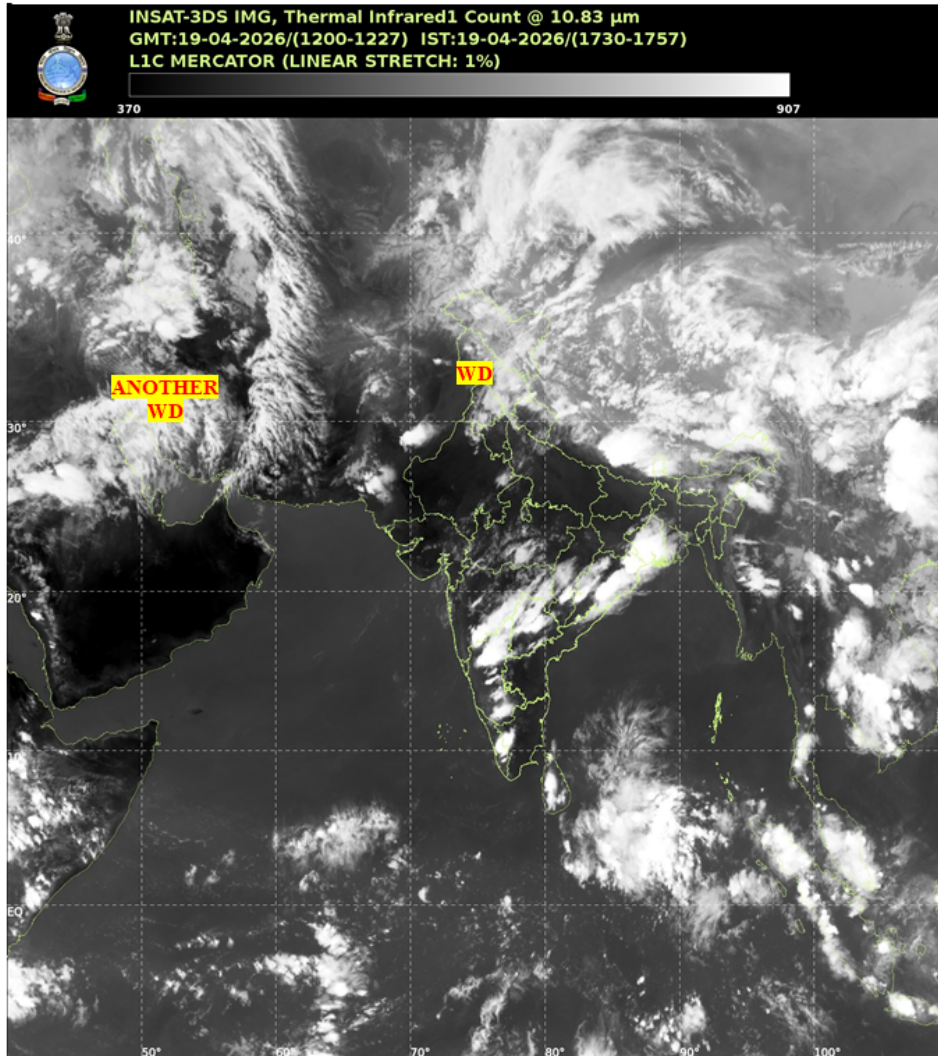


भारत मौसम विज्ञान विभाग
पृथ्वी विज्ञान मंत्रालय
India Meteorological Department
Ministry of Earth Sciences



SATELLITE BULLETIN BASED ON SATELLITE IMAGERIES AND PRODUCTS

Date: 2026-04-19 Time: 12:00:00 UTC



TCIN50 DEMS 191200

SATELLITE BULLETIN BASED ON INSAT-3DS PIC OF 191200 UTC (.)

REGION COVERED BETWEEN LAT 50.0°N TO 35.0°S AND LONG 40.0°E TO 125.0°E (.)

SALIENT FEATURES:

WESTERN DISTURBANCE (WD):-

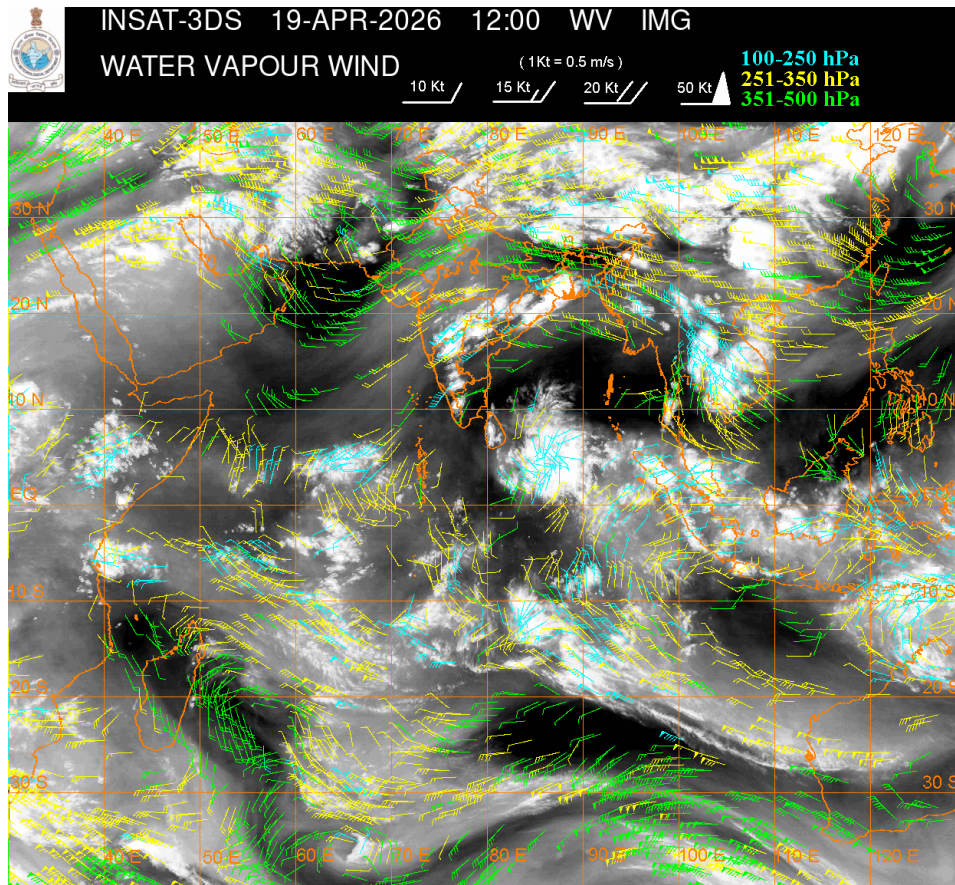
SCT TO BKN MULTILAYERED CLOUDS OVER AFGAN PAK LADAKH J&K HP UTRKND PJB HARY DLH RAJ GUJ MP W UP NEPAL TIBET ADJ CHINA AND N/HOOD IN ASSW WD OVER THE AREA (.)

SCT TO BKN MULTILAYERED CLOUDS OVER CASPIAN SEA IRAN AND N/HOOD IN ASSW ANOTHER WD OVER THE AREA (.)

CONVECTIVE / THUNDERSTORM ACTIVITY:-

INTENSE TO VERY INTENSE CONVECTIVE / THUNDERSTORM ACTIVITY OVER C CHTGH ORS GWB SKM ADJ SHWB NIK SIK TLNGN CENTRAL KER ADJ W TN (MINIMUM CTT MINUS 60-80 DEGREE CELSIUS) (.)

MODERATE TO INTENSE CONVECTIVE / THUNDERSTORM ACTIVITY OVER LADAKH J&K HP UTRKND PJB E JHRKND ARUPR E ASSAM NAGA CENTRAL MP MADHYA MAHA MRTHWD VID N COTL AP NICOBAR ILS AREA (MINIMUM CTT MINUS 40-60 DEGREE CELSIUS) (.)



CLOUD DESCRIPTION WITHIN INDIA:

NORTH:

SCT TO BKN LOW/MED CLOUDS WITH EMBDD MOD TO INT CONVTN OVER LADAKH J&K HP UTRKND PJB (.) SCT LOW/MED CLOUDS WITH EMBDD ISOL WK TO MOD CONVTN OVER HARY W UP (.)

EAST:

SCT TO BKN LOW/MED CLOUDS WITH EMBDD INT TO V INT CONVTN OVER C CHTGH ORS GWB SKM ADJ SHWB AND MOD TO INT CONVTN OVER E JHRKND ARUPR E ASSAM NAGA & SW BD (.) SCT LOW/MED CLOUDS WITH EMBDD ISOL WK TO MOD CONVTN OVER REST ASSAM MEGHA MANI (.) ISOL TO SCT LOW/MED CLOUDS OVER BHR W JHRKND REST SHWB MIZO TRP (.)

WEST:

SCT LOW/MED CLOUDS WITH EMBDD MOD TO INT CONVTN OVER CENTRAL MP MADHYA MAHA MRTHWD VID (.) SCT LOW/MED CLOUDS WITH EMBDD ISOL WK TO MOD CONVTN OVER N RAJ REST MP (.) SCT LOW/MED CLOUDS OVER SE RAJ GUJ KKN (.)

SOUTH:

SCT TO BKN LOW/MED CLOUDS WITH EMBDD INT TO V INT CONVTN OVER NIK SIK TLNGN CENTRAL KER ADJ W TN (.) SCT LOW/MED CLOUDS WITH EMBDD MOD TO INT CONVTN OVER N

COTL AP NICOBAR ILS AREA AND ISOL WK TO MOD CONVTN OVER RYLSM REST KER (.) ISOL TO SCT LOW/MED CLOUDS OVER LKSDP ILS ANDAMAN ILS (.)

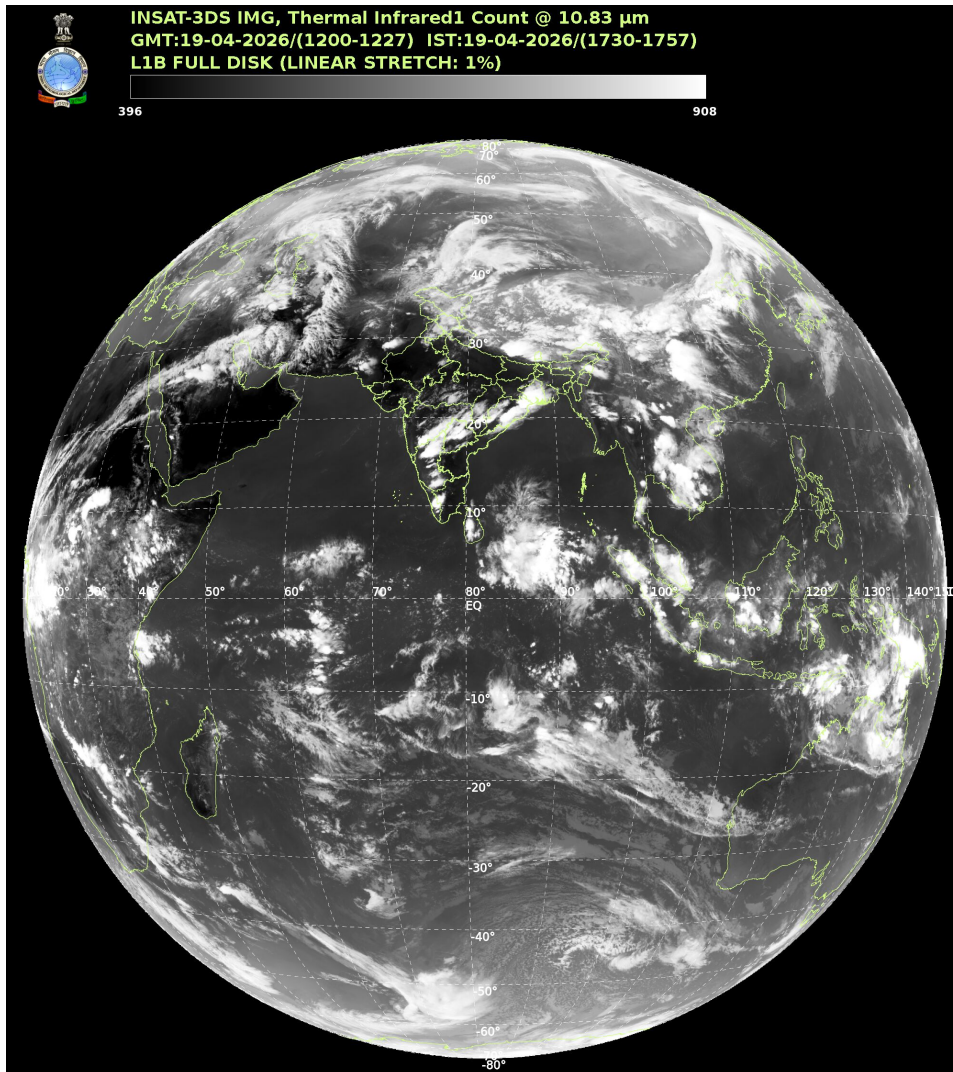
ARABIAN SEA:

SCT LOW/MED CLOUDS WITH EMBDD MOD TO INT CONVTN OVER EXT SOUTH ARSEA ADJ EQUATORIAL INDIAN OCEAN (.)

BAY OF BENGAL & ANDAMAN SEA:

SCT TO BKN LOW/MED CLOUDS WITH EMBDD MOD TO INT CONVTN OVER NW BAY OFF ORS COAST SOUTH BAY AND SOUTH ANDAMAN SEA(.)

CLOUD DESCRIPTION OUTSIDE INDIA:



SCT LOW/MED CLOUDS WITH EMBDD MOD TO INT CONVTN OVER SRI LANKA MALDIVES AREA PAK NEPAL BHUTAN TIBET CHINA YELLOW SEA MYANMAR THAILAND GULF OF THAILAND CAMBODIA LAOS VIETNAM GULF OF TONKIN HAINAN SUMATRA STR OF MALACCA MALAYSIA BORNEO SOUTH CHINA SEA JAVA ILS & SEA CELEBES ILS & SEA PHILIPPINES MADAGASCAR MOZAMBIQUE CHANNEL AND OVER INDIAN OCEAN BET LAT 5.0N TO 35.0S LONG 40.0E TO 110.0E (.)

T00 19/1830 HRS IST

NNNN

LEGEND

REGION	
NORTH	J&K HP UTRKND PJB HARY DLH UP
EAST	BHR JHRKND CHTGH ORS WB SKM NORTH-EAST STATES
WEST	RAJ MP GUJ MAHA GOA
SOUTH	TLNGN AP KRNTK KER TN LKSDP ANDAMAN & NICOBAR ILS
CLOUD DISTRIBUTION	
ISOL	ISOLATED (LESS THAN 25%)
SCT	SCATTERED (25 TO 50%)
BKN	BROKEN (51 TO 75%)
SLD	SOLID (GREATER THAN 75%)
CLOUDS TOP TEMPERATURE	
CTT	CLOUD TOP TEMPERATURE
CONVECTION	
WK CONVTN	WEAK CONVECTION (CTT GREATER THAN -25°C)
MOD CONVTN	MODERATE CONVECTION (CTT BETWEEN -25°C TO -40°C)
INT CONVTN	INTENSE CONVECTION (CTT BETWEEN -41°C TO -70°C)
V INT CONVTN	VERY INTENSE CONVECTION (CTT LESS THAN -70°C)
METEOROLOGICAL SUB-DIVISIONS, STATES & UNION TERRITORIES	
J&K	JAMMU AND KASHMIR
HP	HIMACHAL PRADESH
UTRKND	UTTARAKHAND
PJB	PUNJAB
HARY	HARYANA
DLH	DELHI
BHR	BIHAR
JHRKND	JHARKHAND
CHTGH	CHHATTISGARH
ORS	ORISSA
GWB	GANGETIC WEST BENGAL
SHWB	SUB-HIMALAYAN WEST BENGAL
SKM	SIKKIM
ARUPR	ARUNACHAL PRADESH
ASSAM	ASSAM

MEGHA	MEGHALAYA
MANI	MANIPUR
MIZO	MIZORAM
TRP	TRIPURA
RAJ	RAJASTHAN
MP	MADHYA PRADESH
GUJ	GUJARAT
SAU & KUTCH	SAURASHTRA & KUTCH
MAHA	MAHARASHTRA
M MAHA	MADHYA MAHARASHTRA
MRTHWD	MARATHWADA
VID	VIDARBHA
KKN	KONKAN
TLNGN	TELANGANA
RYLSM	RAYALSEEMA
COTL AP	COASTAL ANDHRA PRADESH
NIK	NORTH INTERIOR KARNATAKA
SIK	SOUTH INTERIOR KARNATAKA
COTL KRNTK	COASTAL KARNATAKA
KER	KERALA
TN	TAMILNADU
LKSDP	LAKSHADWEEP
ILS	ISLANDS
ARSEA	ARABIAN SEA
MISCELLANEOUS	
ASSW	IN ASSOCIATION WITH
ASSTD	ASSOCIATED
LLC	LOW LEVEL CIRCULATION
EMBDD	EMBEDDED
N/HOOD	NEIGHBOURHOOD
EXT	EXTREME