

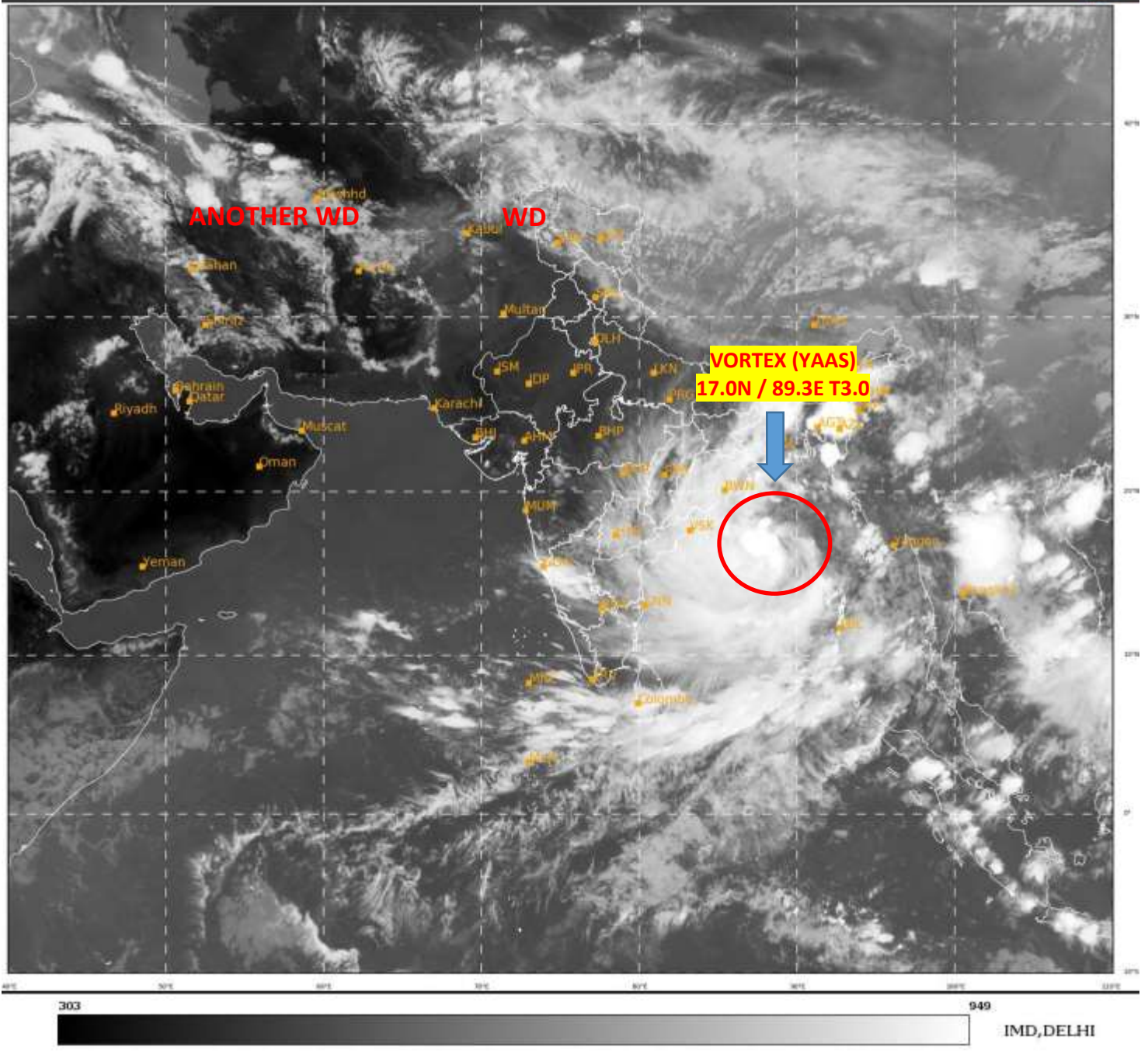


**SATELLITE BULLETIN BASED ON SATELLITE IMAGERIES
AND PRODUCTS**

24.05.2021 TIME 1200 UTC

SAT : INSAT-3D IMG
IMG_TIR1 10.8 um
LIC Mercator

24-05-2021/(1200 to 1226) GMT
24-05-2021/(1730 to 1756) IST



TCIN50 DEMS 241200

SATELLITE BULLETIN BASED ON INSAT-3D PIC OF 241200 UTC (.)

REGION COVERED BETWEEN LAT 50.0°N TO 30.0°S AND LONG 40.0°E TO 125.0°E (.)

SALIENT FEATURES:-

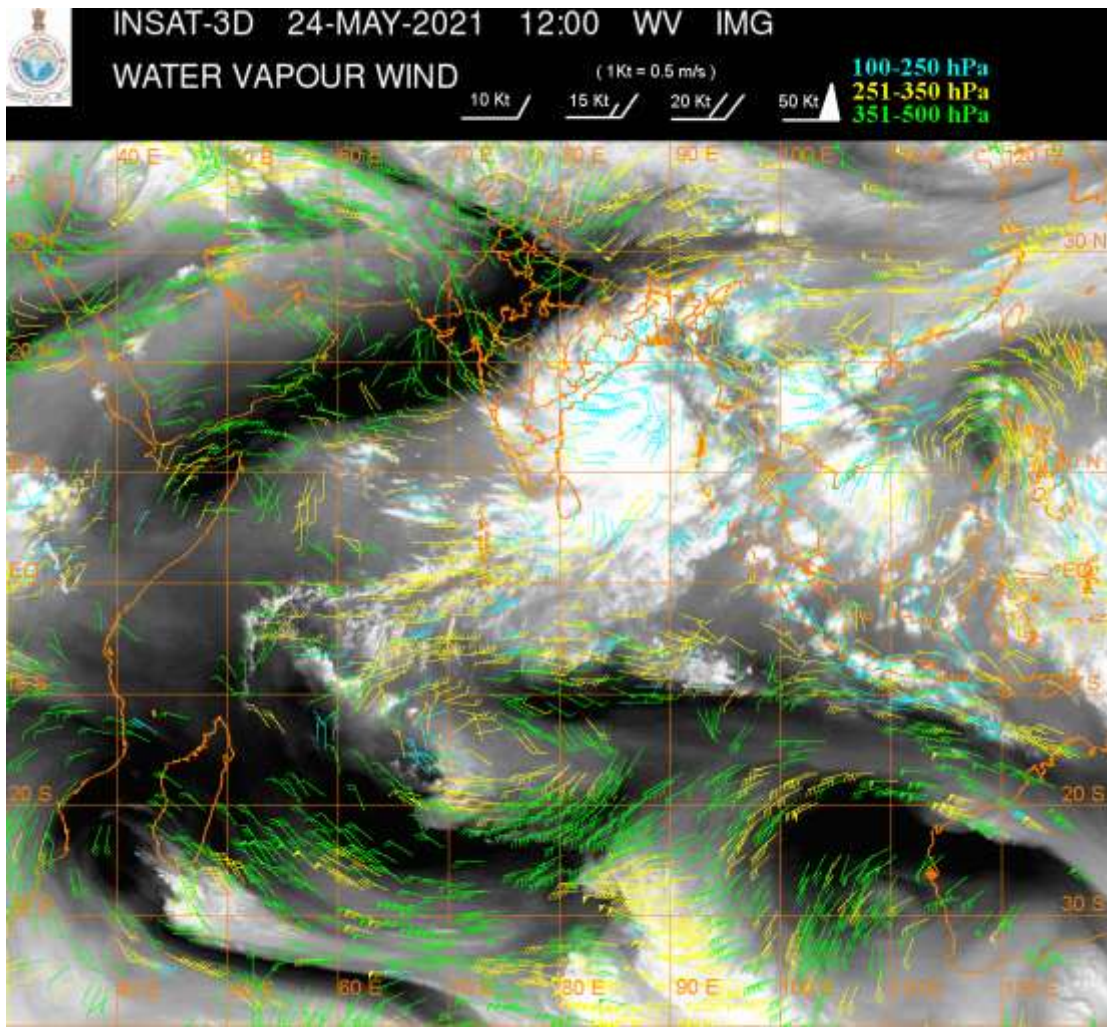
VORTEX (YAAS) OVER EAST-CENTRAL BAY OF BENGAL & N/HOOD:-

VORTEX (YAAS) OVER EAST-CENTRAL BAY & N/HOOD HAS FURTHER INTENSIFIED NOW LAY CENTERED NEAR **17.0N / 89.3E** (.) INTENSITY **T3.0 RPT T3.0** (.) **SHEAR PATTERN** (.) ASSTD BKN LOW/MED CLOUDS WITH EMBDD INT TO V INT CONVTN OVER BAY BET LAT 14.0N TO 21.0N AND LONG 84.0E TO 90.0E (MINIMUM CTT MINUS **93** DEG C) (.)

WESTERN DISTURBANCE (WD):-

SCT MULTILAYERED CLOUDS OVER N PAK LADAKH J&K N HP N UTRKND NEPAL TIBET ADJ CHINA AND N/HOOD IN ASSW **WD** OVER THE AREA (.)

SCT MULTILAYERED CLOUDS OVER S CASPIAN SEA IRAN W AFGAN AND N/HOOD IN ASSW **ANOTHER WD** OVER THE AREA (.)



CLOUDS DESCRIPTION WITHIN INDIA:-

NORTH:-

SCT LOW/MED CLOUDS WITH EMBDD MOD TO INT CONVTN OVER N LADAKH AND WK TO MOD CONVTN OVER REST LADAKH J&K N HP N UTRKND (.) SCT LOW/MED CLOUDS OVER S HP SW & E UP (.)

EAST:-

SCT TO BKN LOW/MED CLOUDS WITH EMBDD INT TO V INT CONVTN OVER EXT NE BHR E JHRKND NE CHTGH ORS SHWB GWB MEGHA ASSAM NAGA MANI MIZO TRP & BD (.) SCT LOW/MED CLOUDS WITH EMBDD MOD TO INT CONVTN OVER REST CHTGH S ARUPR (.) SCT LOW/MED CLOUDS WITH EMBDD WK TO MOD CONVTN OVER REST E BHR W JHRKND SKM REST ARUPR (.) SCT LOW/MED CLOUDS OVER REST BHR (.)

WEST:-

SCT LOW/MED CLOUDS WITH EMBDD INT TO V INT CONVTN OVER GOA (.) SCT LOW/MED CLOUDS WITH EMBDD MOD TO INT CONVTN OVER E VID S KKN SW GUJ (.) SCT LOW/MED CLOUDS WITH EMBDD ISOL WK TO MOD CONVTN OVER MP REST MAHA (.) SCT LOW/MED CLOUDS OVER S RAJ REST GUJ (.)

SOUTH:-

SCT LOW/MED CLOUDS WITH EMBDD INT TO V INT CONVTN OVER W NIK N SIK N COTL KRNTK N COTL AP (.) SCT LOW/MED CLOUDS WITH EMBDD MOD TO INT CONVTN OVER REST KRNTK TLNGN RYLSM S COTL AP EXT N KER NE TN S ANDAMAN & NICOBAR ILS (.) SCT LOW/MED CLOUDS WITH EMBDD WK TO MOD CONVTN OVER REST KER REST TN REST ANDAMAN ILS (.)

ARABIAN SEA:-

**SCT LOW/MED CLOUDS WITH EMBDD INT TO V INT CONV TN OVER SE ARSEA & COMORIN (.)
SCT LOW/MED CLOUDS WITH EMBDD MOD TO INT CONV TN OVER EC ARSEA OFF GOA COAST
& N/HOOD AND ALSO OVER SW ARSEA (.)**

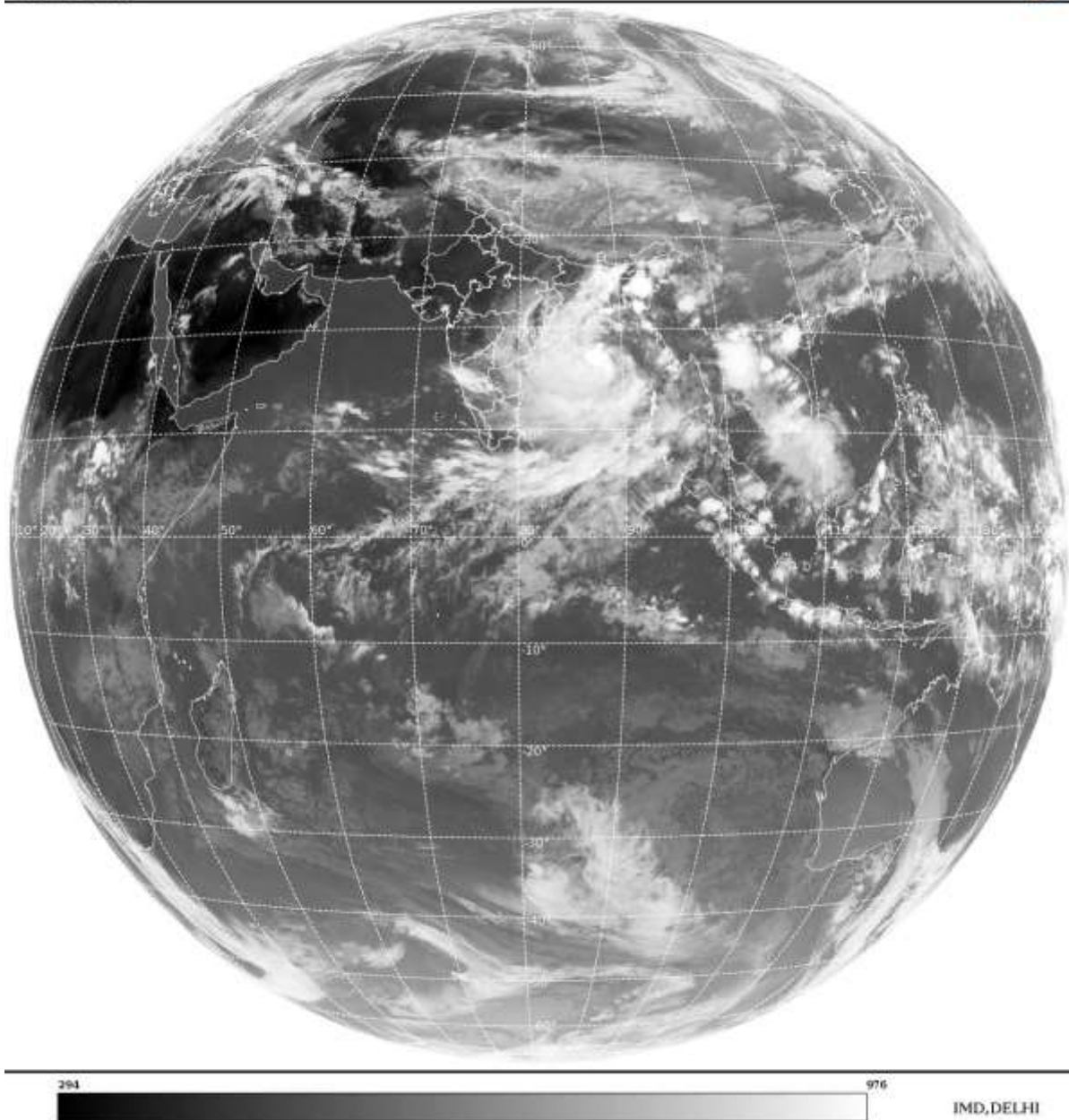
BAY OF BENGAL & ANDAMAN SEA:-

BKN LOW/MED CLOUDS WITH EMBDD INT TO V INT CONV TN OVER BAY & ANDAMAN SEA (.)

CLOUDS DESCRIPTION OUTSIDE INDIA:-

SAT : INSAT-3D IMG
Thermal Infrared1 Count 10.8 um
LIB FULL DISK

24-05-2021/(1200 to 1226) GMT
24-05-2021/(1730 to 1756) IST



**SCT LOW/MED CLOUDS WITH EMBDD MOD TO INT CONV TN OVER SRI LANKA MALDIVES
NEPAL BHUTAN TIBET CHINA YELLOW SEA E CHINA SEA TAIWAN MYANMAR THAILAND
GULF OF THAILAND CAMBODIA LAOS VIETNAM GULF OF TONKIN HAINAN SUMATRA STR
OF MALACCA MALAY PENINSULA BORNEO S CHINA SEA JAVA ILS & SEA CELEBES ILS & SEA
PHILIPPINES SULU SEA AND OVER INDIAN OCEAN BET LAT 5.0S TO 10.0S LONG 52.5.0E TO 97.5E
(.)**

TOO 24/1915EF=

NNNN

LEGEND:-

REGION	NORTH	J&K HP PJB HARY DLH UP UTRKND
	EAST	BHR JHRKND CHTGH ORS WB SKMNORTH-EAST STATES
	WEST	RAJ MP GUJ MAHA GOA
	SOUTH	TLNGN AP KRNTK KER TN LKSDP ANDAMAN & NICOBAR ILS

CLOUD DISTRIBUTION	ISOL	ISOLATED (LESS THAN 25%)
	SCT	SCATTERED (25 TO 50%)
	BKN	BROKEN (51 TO 75%)
	SLD	SOLID (GREATER THAN 75%)
CLOUDS TOP TEMPERATURE	CTT	CLOUD TOP TEMPERATURE
CONVECTION	WK CONVTN	WEAK CONVECTION (CTT GREATER THAN -25°C)
	MOD CONVTN	MODERATE CONVECTION (CTT BETWEEN -25°C TO -40°C)
	INT CONVTN	INTENSE CONVECTION (CTT BETWEEN -41°C TO -70°C)
	V INT CONVTN	VERY INTENSE CONVECTION (CTT LESS THAN -70°C)
METEOROLOGICAL SUB-DIVISIONS, STATES & UNION TERRITORIES	ARUPR	ARUNACHAL PRADESH
	BHR	BIHAR
	CHTGH	CHHATTISGARH
	COTL AP	COASTAL ANDHRA PRADESH
	COTL KRNTK	COASTAL KARNATAKA
	COTL ORS	COASTAL ORISSA
	GUJ	GUJARAT
	GWB	GANGETIC WEST BENGAL
	HARY	HARYANA
	DLH	DELHI
	HP	HIMACHAL PRADESH
	J&K	JAMMU AND KASHMIR
	JHRKND	JHARKHAND
	KER	KERALA
	KKN	KONKAN
	LKSDP	LAKSHADWEEP
	M MAHA	MADHYA MAHARASHTRA
	MAHA	MAHARASHTRA
	MANI	MANIPUR
	MEGHA	MEGHALAYA
MIZO	MIZORAM	
MP	MADHYA PRADESH	

	MRTHWD	MARATHWADA
	NAGA	NAGALAND
	N COTL AP	NORTH COASTAL ANDHRA PRADESH
	NIK	NORTH INTERIOR KARNATAKA
	ORS	ORISSA
	PJB	PUNJAB
	RAJ	RAJASTHAN
	RYLSM	RAYALASEEMA
	SAU & KUTCH	SAURASHTRA & KUTCH
	SHWB	SUB-HIMALAYAN WEST BENGAL
	SIK	SOUTH INTERIOR KARNATAKA
	SKM	SIKKIM
	TLNGN	TELANGANA
	TN	TAMIL NADU
	TRP	TRIPURA
	UP	UTTAR PRADESH
	UTRKND	UTTARAKHAND
	VID	VIDHARBHA
	SHWB	SUB HIMALAYAN WEST BENGAL
	GWB	GANGETIC WEST BENGAL
	ARSEA	ARABIAN SEA
	ILS	ISLANDS
MISCELLANEOUS	ASSW	IN ASSOCIATION WITH
	ASSTD	ASSOCIATED
	LLC	LOW LEVEL CIRCULATION
	EMBDD	EMBEDDED
	N/HOOD	NEIGHBOURHOOD
	EXT	EXTREME