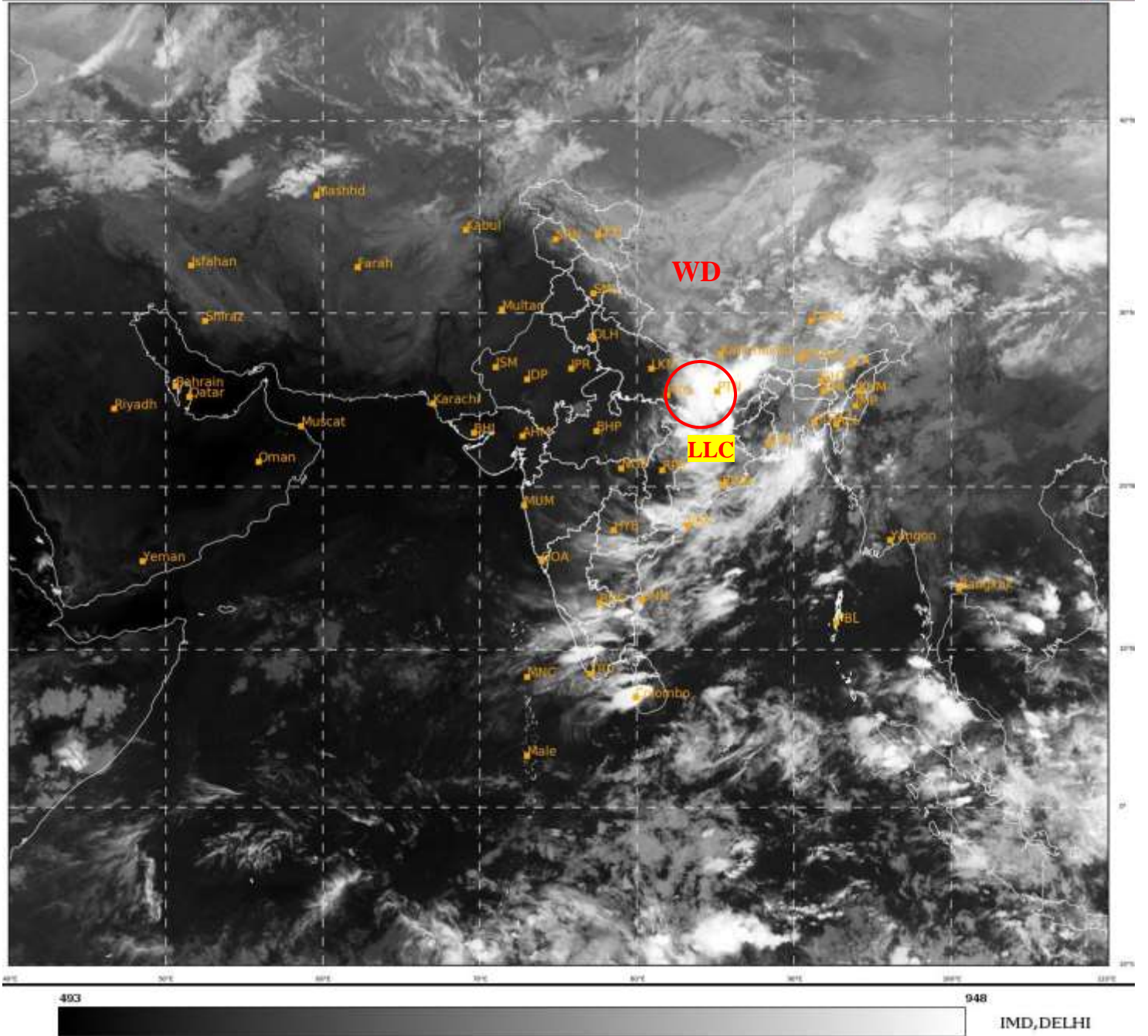




SATELLITE BULLETIN BASED ON SATELLITE
IMAGERIES AND PRODUCTS
19.10.2021 TIME 1500 UTC

SAT : INSAT-3D IMG
IMG_TIR1 10.8 um
LIC Mercator

19-10-2021/(1500 to 1526) GMT
19-10-2021/(2030 to 2056) IST



TCIN50 DEMS 191500

SATELLITE BULLETIN BASED ON INSAT-3D PIC OF 191500 UTC (.)

REGION COVERED BETWEEN LAT 50.0°N TO 30.0°S AND LONG 40.0°E TO 125.0°E (.)

SALIENT FEATURES:-

LLC OVER BHR & N/HOOD :-

SCT LOW/MED CLOUDS WITH EMBDD INT TO V INT CONVTN OVER BHR & N/HOOD IN ASSW
LLC OVER THE AREA (.) MINIMUM CTT MINUS **93** DEG C (.)

WESTERN DISTURBANCE (WD):-

SCT TO BKN MULTILAYERED CLOUDS OVER E UP NEPAL TIBET ADJ CHINA IN ASSW **WD** OVER
THE AREA (.)



INSAT-3D 19-OCT-2021 15:00 WV IMG

WATER VAPOUR WIND

(1Kt = 0.5 m/s)

10 Kt

15 Kt

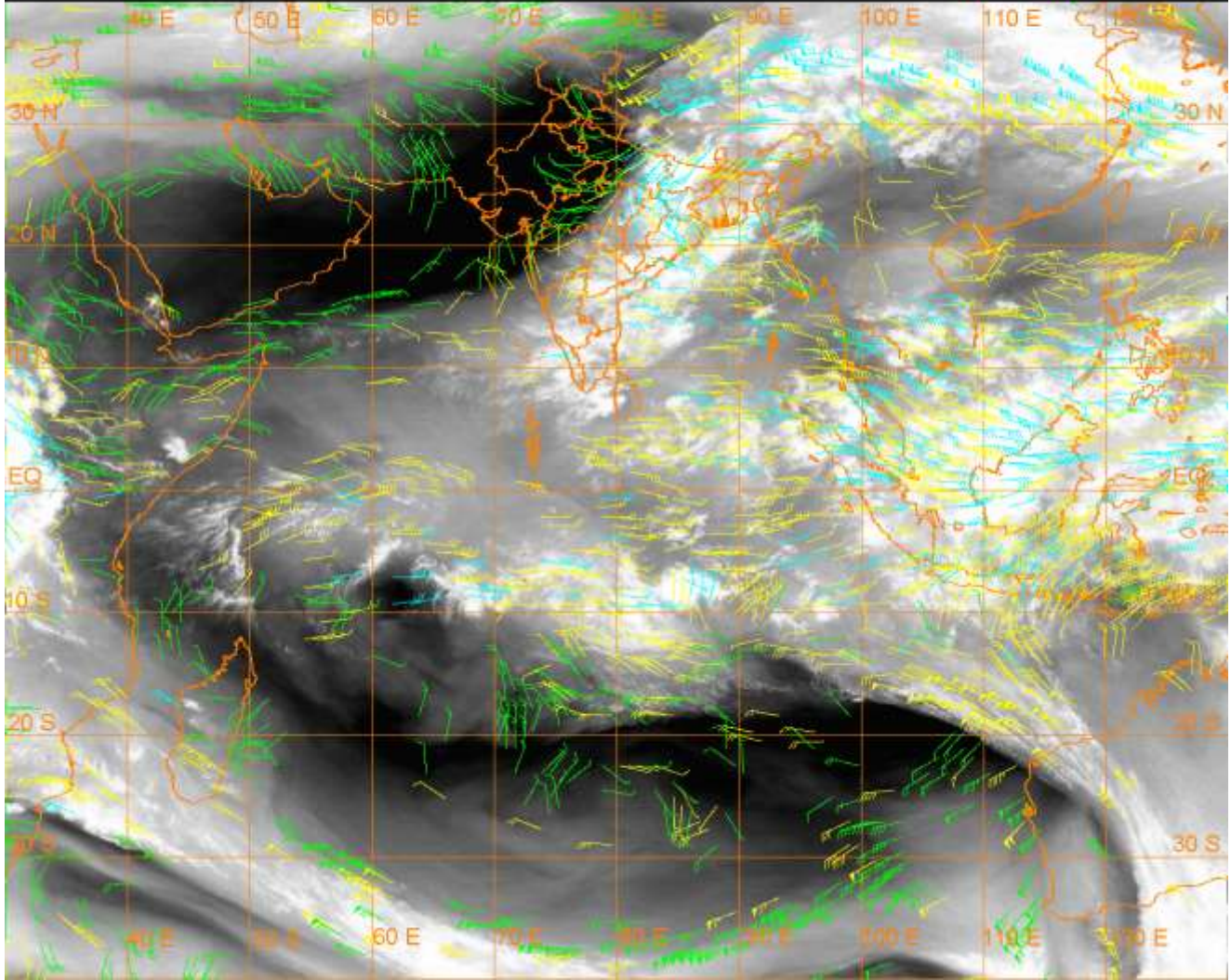
20 Kt

50 Kt

100-250 hPa

251-350 hPa

351-500 hPa



CLOUDS DESCRIPTION WITHIN INDIA:-

NORTH:-

SCT TO BKN LOW/MED CLOUDS WITH EMBDD INT TO V INT CONVTN OVER EXT E UP (MINIMUM CTT MINUS **93** DEG) AND MOD TO INT CONVTN OVER REST E UP (.) SCT LOW/MED CLOUDS WITH EMBDD WK CONVTN OVER LADAKH N HP UTRKND (.) SCT LOW/MED CLOUDS OVER J&K S HP (.)

EAST:-

SCT TO BKN LOW/MED CLOUDS WITH EMBDD INT TO V INT CONVTN OVER BHR NW JHRKND NC CHTGH (MINIMUM CTT MINUS **93** DEG) W ASSAM EXT S ARUPR (MINIMUM CTT MINUS **86** DEG) (.) SCT LOW/MED CLOUDS WITH EMBDD MOD TO INT CONVTN OVER REST N & EXT S CHTGH S JHRKND ORS SE GWB N SHWB SKM EXT S ASSAM S MIZO & BD AND ISOL WK TO MOD CONVTN OVER NE JHRKND N GWB S SHWB REST NE STATES (.)

WEST:-

SCT LOW/MED CLOUDS WITH EMBDD MOD TO V INT CONVTN OVER E MP (.) SCT LOW/MED CLOUDS WITH EMBDD WK CONVTN OVER MRTHWD E VID (.) ISOL TO SCT LOW/MED CLOUDS OVER S RAJ W MP S GUJ REST MAHA (.)

SOUTH:-

SCT LOW/MED CLOUDS WITH EMBDD INT TO V INT CONVTN OVER N COTL AP (MINIMUM CTT MINUS **93** DEG) NE TN SC KER (MINIMUM CTT MINUS **77** DEG) AND MOD TO INT CONVTN OVER S TLNGN ADJ N RYLSM N COTL AP SOUTH SIK NW TN REST KER (.) SCT LOW/MED CLOUDS WITH EMBDD WK TO MOD CONVTN OVER E NIK NORTH SIK REST TLNGN REST AP REST TN (.) SCT LOW/MED CLOUDS OVER REST KRNTK LKSDP ANDAMAN & NICOBAR ILS (.)

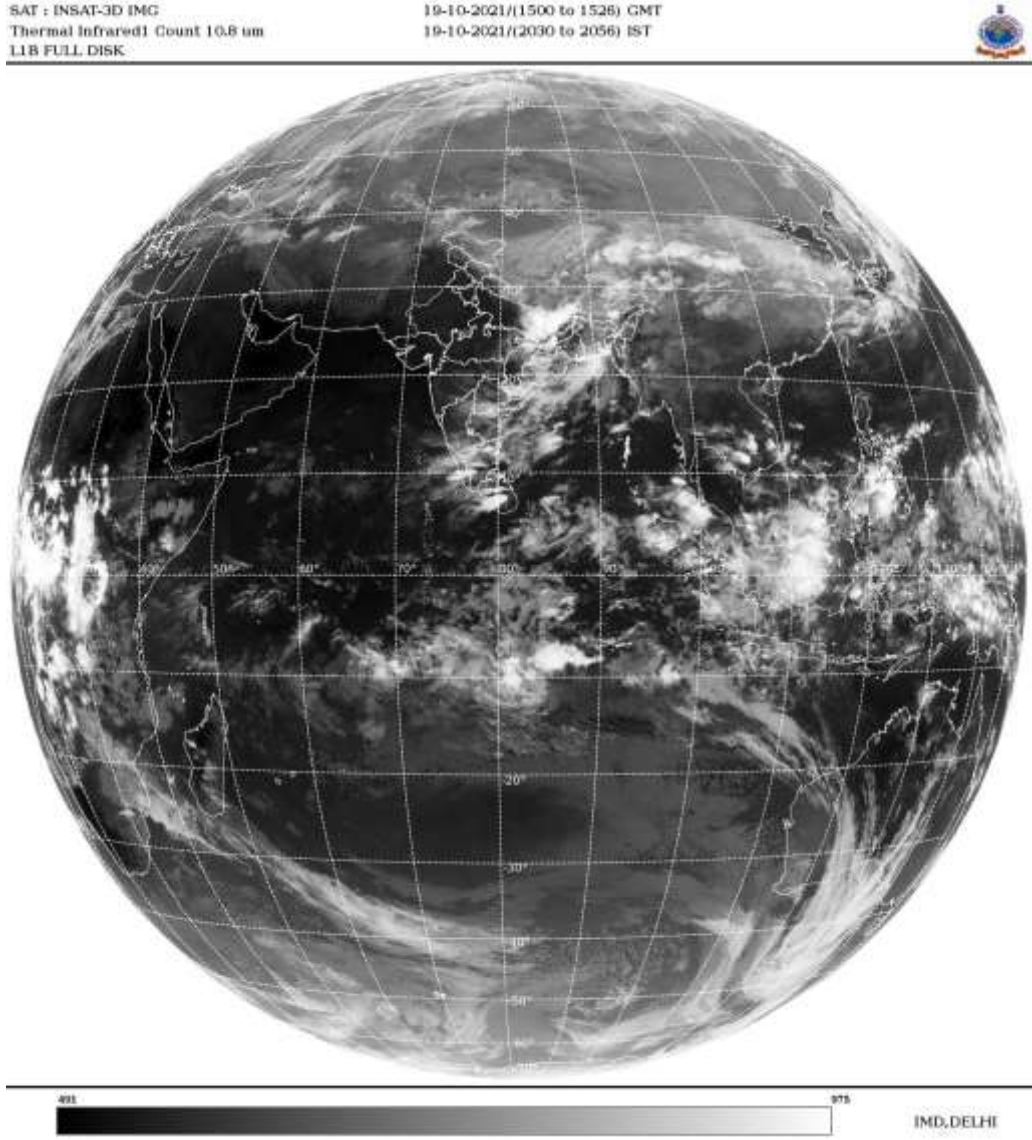
ARABIAN SEA:-

SCT LOW/MED CLOUDS WITH EMBDD MOD TO INTCONVTN OVER SE ARSEA OFF KER COAST (.)

BAY OF BENGAL & ANDAMAN SEA:-

SCT LOW/MED CLOUDS WITH EMBDD INT TO V INT CONV TN OVER NC& SW BAY AND MOD TO INT CONV TN OVER REST BAY S ANDAMAN SEA (.)

CLOUDS DESCRIPTION OUTSIDE INDIA:-



SCT LOW/MED CLOUDS WITH EMBDD MOD TO INT CONV TN OVER SRI LANKA NEPAL BHUTAN TIBET CHINA YELLOW SEA E CHINA SEA N MYANMAR THAILAND LAOS CAMBODIA VIETNAM GULF OF TONKIN HAINAN SUMATRA STR OF MALACCA MALAY PENINSULA BORNEO SOUTH CHINA SEA JAVA ILS & SEA CELEBES ILS & SEA PHILIPPINES SULU SEA AND OVER INDIAN OCEAN BET LAT 3.0N TO LAT 10.0S LONG 46.0E TO 74.0E AND BET LAT 5.0N TO LAT 20.0S LONG 74.0E TO 114.0E (.)

TOO 19/2130EF=

NNNN

LEGEND:-

REGION	NORTH	J&K HP PJB HARY DLH UP UTRKND
	EAST	BHR JHRKND CHTGH ORS WB SKMNORTH- EAST STATES
	WEST	RAJ MP GUJ MAHA GOA

	SOUTH	TLNGN AP KRNTK KER TN LKSDP ANDAMAN & NICOBAR ILS
--	--------------	--

CLOUD DISTRIBUTION	ISOL	ISOLATED (LESS THAN 25%)	
	SCT	SCATTERED (25 TO 50%)	
	BKN	BROKEN (51 TO 75%)	
	SLD	SOLID (GREATER THAN 75%)	
CLOUDS TOP TEMPERATURE	CTT	CLOUD TOP TEMPERATURE	
CONVECTION	WK CONVTN	WEAK CONVECTION (CTT GREATER THAN -25°C)	
	MOD CONVTN	MODERATE CONVECTION (CTT BETWEEN -25°C TO -40°C)	
	INT CONVTN	INTENSE CONVECTION (CTT BETWEEN -41°C TO -70°C)	
	V INT CONVTN	VERY INTENSE CONVECTION (CTT LESS THAN -70°C)	
METEOROLOGICAL SUB-DIVISIONS, STATES & UNION TERRITORIES	ARUPR	ARUNACHAL PRADESH	
	BHR	BIHAR	
	CHTGH	CHHATTISGARH	
	COTL AP	COASTAL ANDHRA PRADESH	
	COTL KRNTK	COASTAL KARNATAKA	
	COTL ORS	COASTAL ORISSA	
	GUJ	GUJARAT	
	GWB	GANGETIC WEST BENGAL	
	HARY	HARYANA	
	DLH	DELHI	
	HP	HIMACHAL PRADESH	
	J&K	JAMMU AND KASHMIR	
	JHRKND	JHARKHAND	
	KER	KERALA	
	KKN	KONKAN	
	LKSDP	LAKSHADWEEP	
	M MAHA	MADHYA MAHARASHTRA	
	MAHA	MAHARASHTRA	
	MANI	MANIPUR	
	MEGHA	MEGHALAYA	
	MIZO	MIZORAM	
	MP	MADHYA PRADESH	
		MRTHWD	MARATHWADA
		NAGA	NAGALAND
N COTL AP		NORTH COASTAL ANDHRA PRADESH	
NIK		NORTH INTERIOR KARNATAKA	
ORS		ORISSA	
PJB		PUNJAB	
RAJ		RAJASTHAN	
RYLSM		RAYALASEEMA	
	SAU & KUTCH	SAURASHTRA & KUTCH	

	SHWB	SUB-HIMALAYAN WEST BENGAL
	SIK	SOUTH INTERIOR KARNATAKA
	SKM	SIKKIM
	TLNGN	TELANGANA
	TN	TAMIL NADU
	TRP	TRIPURA
	UP	UTTAR PRADESH
	UTRKND	UTTARAKHAND
	VID	VIDHARBHA
	SHWB	SUB HIMALAYAN WEST BENGAL
	GWB	GANGETIC WEST BENGAL
	ARSEA	ARABIAN SEA
	ILS	ISLANDS
MISCELLANEOUS	ASSW	IN ASSOCIATION WITH
	ASSTD	ASSOCIATED
	LLC	LOW LEVEL CIRCULATION
	EMBDD	EMBEDDED
	N/HOOD	NEIGHBOURHOOD
	EXT	EXTREME