



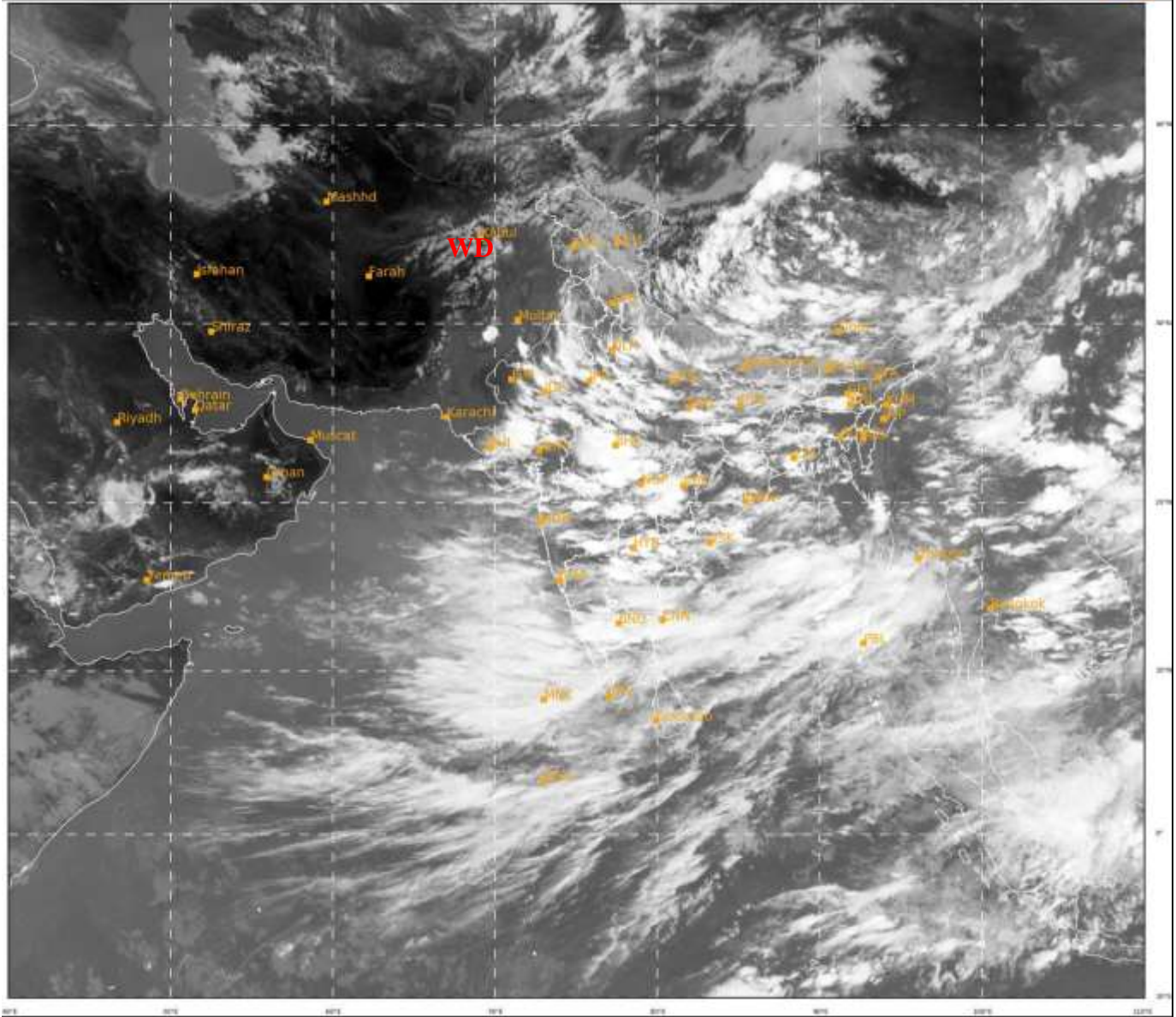
भारत मौसम विज्ञान विभाग  
पृथ्वी विज्ञान मंत्रालय  
India Meteorological Department  
Ministry of Earth Sciences



**SATELLITE BULLETIN BASED ON SATELLITE  
IMAGERIES AND PRODUCTS**  
**04.08.2022 TIME 0900 UTC**

SAT : INSAT-3D IMG  
IMG\_TIR1 10.8 um  
LIC Mercator

04-08-2022/(0900 to 0926) GMT  
04-08-2022/(1430 to 1456) IST



247 900  
IMD, DELHI

**TCIN50 DEMS 040900**

**SATELLITE BULLETIN BASED ON INSAT-3D PIC OF 040900 UTC (.)**

**REGION COVERED BETWEEN LAT 50.0°N TO 30.0°S AND LONG 40.0°E TO 125.0°E (.)**

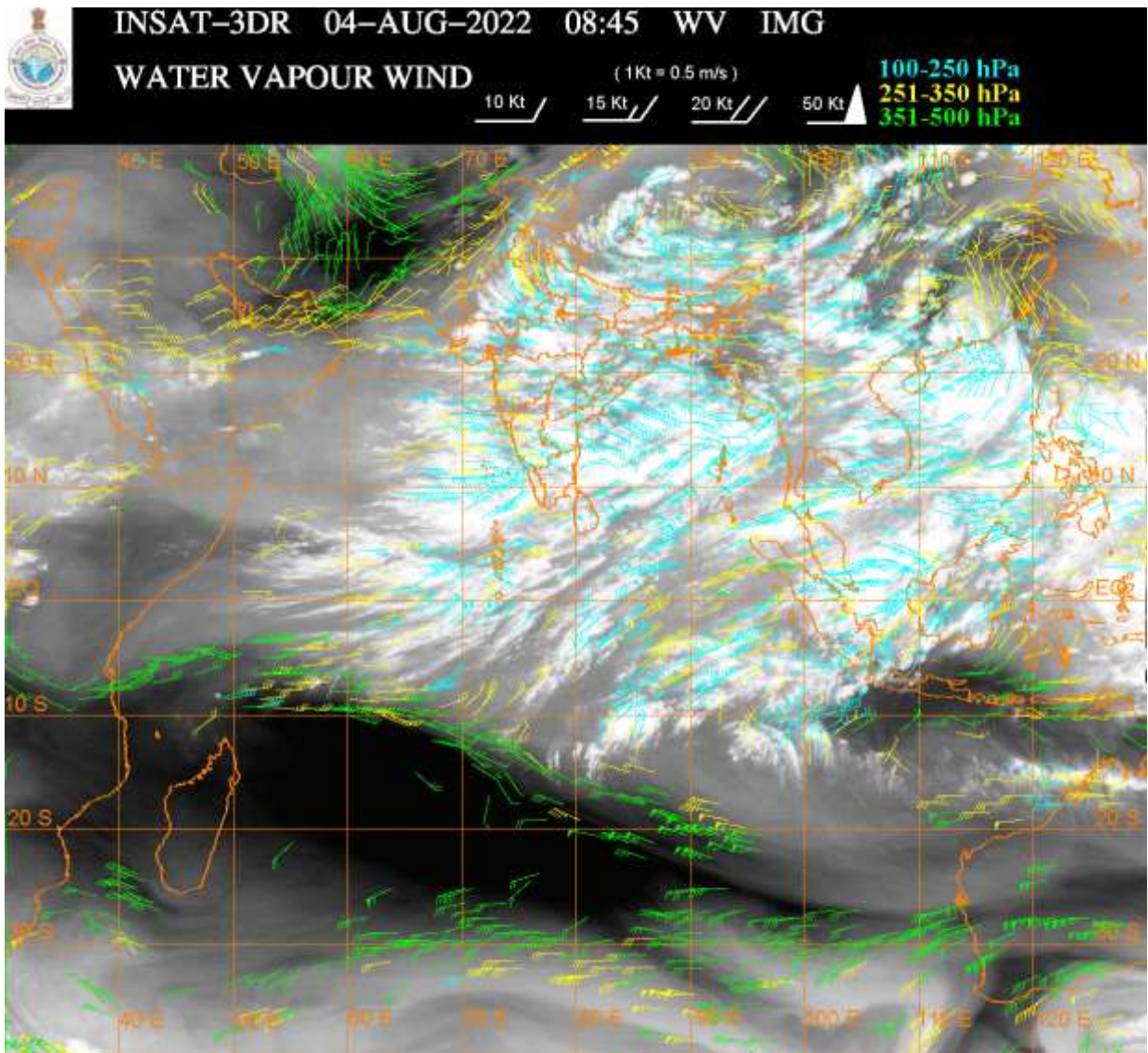
**SALIENT FEATURES:-**

**WESTERN DISTURBANCE (WD):-**

**SCT MULTILAYERED CLOUDS OVER E AFGAN PAK LADAKH J&K HP UTRKND PJB AND N/HOOD IN ASSW **WD** OVER THE AREA (.)**

**CONVECTIVE ACTIVITIES :-**

**CONVECTIVE ACTIVITIES OBSERVED OVER HP UTRKND PJB HARY DLH UP BHR JHRKND CHTGH ORS GWB SHWB MEGHA C ASSAM E ARUPR TRP RAJ MP GUJ MAHA KRNTK TLNGN RYLSM COTL AP KER TN LKSDP ILS ANDAMAN & NICOBAR ILS (.)**



### **CLOUDS DESCRIPTION WITHIN INDIA:-**

#### **NORTH:-**

SCT TO BKN LOW/MED CLOUDS WITH EMBDD INT TO V INT CONVTN OVER SE UTRKND SE HARY DLH (MINIMUM CTT MINUS **85** DEG C) UP (MINIMUM CTT MINUS **93** DEG C) (.) SCT TO BKN LOW/MED CLOUDS WITH EMBDD MOD TO INT CONVTN OVER HP REST UTRKND PJB REST HARY AND WK TO MOD CONVTN OVER J&K LADAKH (.)

#### **EAST:-**

SCT TO BKN LOW/MED CLOUDS WITH EMBDD INT TO V INT CONVTN OVER S BHR JHRKND CHTGH ORS S GWB SHWB MEGHA C ASSAM & BD (MINIMUM CTT MINUS **93** DEG C) (.) SCT TO BKN LOW/MED CLOUDS WITH EMBDD MOD TO INT CONVTN OVER N BHR N GWB REST NE STATES AND WK TO MOD CONVTN OVER SKM (.)

#### **WEST:-**

SCT TO BKN LOW/MED CLOUDS WITH EMBDD INT TO V INT CONVTN OVER RAJ MP GUJ MAHA (MINIMUM CTT MINUS **93** DEG C) (.) SCT TO BKN LOW/MED CLOUDS WITH EMBDD WK TO MOD CONVTN OVER GOA (.)

#### **SOUTH:-**

SCT TO BKN LOW/MED CLOUDS WITH EMBDD INT TO V INT CONVTN OVER KRNTK TLNGN RYLSM COTL AP KER N TN (MINIMUM CTT MINUS **93** DEG C) LKSDP ILS ANDAMAN ILS (MINIMUM CTT MINUS **80** DEG C) (.) SCT TO BKN LOW/MED CLOUDS WITH EMBDD MOD TO INT CONVTN OVER S TN NICOBAR ILS (.)

#### **ARABIAN SEA:-**

SCT TO BKN LOW/MED CLOUDS WITH EMBDD INT TO V INT CONVTN OVER EAST ARSEA LKSDP ILS AREA (.) SCT LOW/MED CLOUDS WITH EMBDD MOD TO INT CONVTN OVER WEST ARSEA & COMORIN AREA (.)

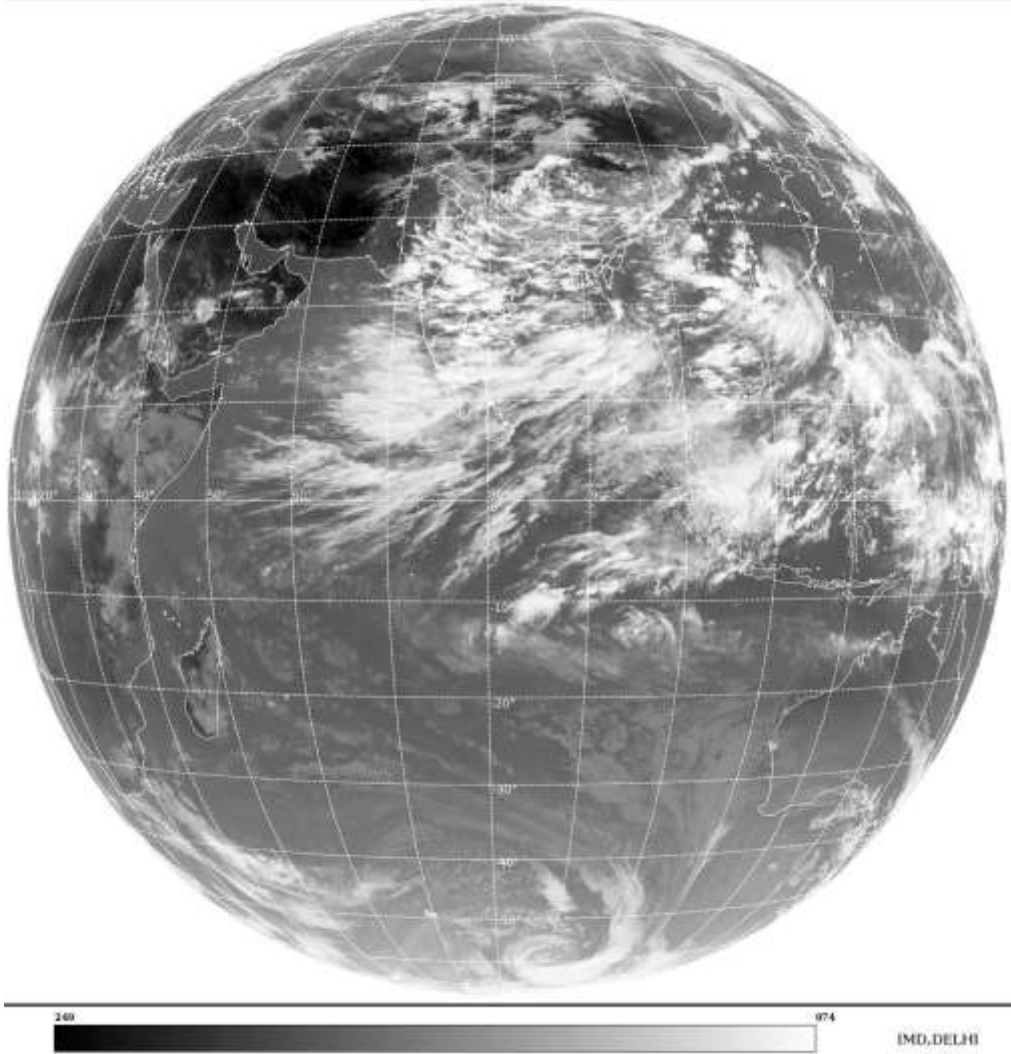
#### **BAY OF BENGAL & ANDAMAN SEA:-**

SCT TO BKN LOW/MED CLOUDS WITH EMBDD INT TO V INT CONVTN OVER BAY N ANDAMAN SEA AND MOD TO INT CONVTN OVER S ANDAMAN SEA (.)

**CLOUDS DESCRIPTION OUTSIDE INDIA:-**

SAT : INSAT-3D IMG  
Thermal Infrared1 Count 10.8 um  
L1B FULL DISK

04-08-2022/(0900 to 0926) GMT  
04-08-2022/(1430 to 1456) IST



**SCT LOW/MED CLOUDS WITH EMBDD MOD TO INT CONVTN OVER SRI LANKA PALK STR GULF OF MANNAR MALDIVES PAK NEPAL BHUTAN TIBET CHINA MYANMAR THAILAND GULF OF THAILAND CAMBODIA LAOS VIETNAM GULF OF TONKIN HAINAN TAIWAN SUMATRA STR OF MALACCA MALAYSIA BORNEO SOUTH CHINA SEA JAVA ILS & SEA CELEBES ILS & SEA PHILIPPINES SULU SEA AND OVER INDIAN OCEAN BET LAT 5.0N TO 15.0S LONG 55.0E TO 105.0E (.)**

**TOO 04/1530 HRS IST=**

**NNNN**

**LEGEND:-**

|               |              |  |
|---------------|--------------|--|
| <b>REGION</b> | <b>NORTH</b> | <b>J&amp;K HP PJB HARY DLH UP UTRKND</b>                         |
|               | <b>EAST</b>  | <b>BHR JHRKND CHTGH OR WB SKM<br/>NORTH- EAST STATES</b>         |
|               | <b>WEST</b>  | <b>RAJ MP GUJ MAHA GOA</b>                                       |
|               | <b>SOUTH</b> | <b>TLNGN AP KRNTK KER TN LKSDP<br/>ANDAMAN &amp; NICOBAR ILS</b> |

|   |                     |   |                   |
|---|---------------------|---|-------------------|
| <b>CLOUD DISTRIBUTION</b>   | <b>ISOL</b>         | <b>ISOLATED (LESS THAN 25%)</b>                             |                   |
|   | <b>SCT</b>          | <b>SCATTERED (25 TO 50%)</b>                                |                   |
|   | <b>BKN</b>          | <b>BROKEN (51 TO 75%)</b>                                   |                   |
|   | <b>SLD</b>          | <b>SOLID (GREATER THAN 75%)</b>                             |                   |
| <b>CLOUDS TOP TEMPERATURE</b>                                       | <b>CTT</b>          | <b>CLOUD TOP TEMPERATURE</b>                                |                   |
| <b>CONVECTION</b>   | <b>WK CONVTN</b>    | <b>WEAK CONVECTION<br/>(CTT GREATER THAN -25°C)</b>         |                   |
|   | <b>MOD CONVTN</b>   | <b>MODERATE CONVECTION<br/>(CTT BETWEEN -25°C TO -40°C)</b> |                   |
|   | <b>INT CONVTN</b>   | <b>INTENSE CONVECTION<br/>(CTT BETWEEN -41°C TO -70°C)</b>  |                   |
|   | <b>V INT CONVTN</b> | <b>VERY INTENSE CONVECTION<br/>(CTT LESS THAN -70°C)</b>    |                   |
| <b>METEOROLOGICAL SUB-DIVISIONS, STATES &amp; UNION TERRITORIES</b> | <b>ARUPR</b>        | <b>ARUNACHAL PRADESH</b>                                    |                   |
|   | <b>BHR</b>          | <b>BIHAR</b>  |                   |
|   | <b>CHTGH</b>        | <b>CHHATTISGARH</b>   |                   |
|   | <b>COTL AP</b>      | <b>COASTAL ANDHRA PRADESH</b>                               |                   |
|   | <b>COTL KRNTK</b>   | <b>COASTAL KARNATAKA</b>                                    |                   |
|   | <b>COTL ORS</b>     | <b>COASTAL ORISSA</b>                                       |                   |
|   | <b>GUJ</b>          | <b>GUJARAT</b>  |                   |
|   | <b>GWB</b>          | <b>GANGETIC WEST BENGAL</b>                                 |                   |
|   | <b>HARY</b>         | <b>HARYANA</b>  |                   |
|   | <b>DLH</b>          | <b>DELHI</b>  |                   |
|   | <b>HP</b>           | <b>HIMACHAL PRADESH</b>                                     |                   |
|   | <b>J&amp;K</b>      | <b>JAMMU AND KASHMIR</b>                                    |                   |
|   | <b>JHRKND</b>       | <b>JHARKHAND</b>  |                   |
|   | <b>KER</b>          | <b>KERALA</b>   |                   |
|   | <b>KKN</b>          | <b>KONKAN</b>   |                   |
|   | <b>LKSDP</b>        | <b>LAKSHADWEEP</b>  |                   |
|   | <b>M MAHA</b>       | <b>MADHYA MAHARASHTRA</b>                                   |                   |
|   | <b>MAHA</b>         | <b>MAHARASHTRA</b>  |                   |
|   | <b>MANI</b>         | <b>MANIPUR</b>  |                   |
|   | <b>MEGHA</b>        | <b>MEGHALAYA</b>  |                   |
|   | <b>MIZO</b>         | <b>MIZORAM</b>  |                   |
|   | <b>MP</b>           | <b>MADHYA PRADESH</b>                                       |                   |
|   |                     | <b>MRTHWD</b>   | <b>MARATHWADA</b> |
|   |                     | <b>NAGA</b>   | <b>NAGALAND</b>   |
| <b>N COTL AP</b>  |                     | <b>NORTH COASTAL ANDHRA PRADESH</b>                         |                   |
| <b>NIK</b>  |                     | <b>NORTH INTERIOR KARNATAKA</b>                             |                   |
| <b>ORS</b>  |                     | <b>ORISSA</b>   |                   |
| <b>PJB</b>  |                     | <b>PUNJAB</b>   |                   |
| <b>RAJ</b>  |                     | <b>RAJASTHAN</b>  |                   |
| <b>RYLSM</b>  |                     | <b>RAYALASEEMA</b>  |                   |
| <b>SAU &amp; KUTCH</b>  |                     | <b>SAURASHTRA &amp; KUTCH</b>                               |                   |
| <b>SHWB</b>   |                     | <b>SUB-HIMALAYAN WEST BENGAL</b>                            |                   |
| <b>SIK</b>  |                     | <b>SOUTH INTERIOR KARNATAKA</b>                             |                   |
| <b>SKM</b>  |                     | <b>SIKKIM</b>   |                   |

|                      |               |                                  |
|----------------------|---------------|----------------------------------|
|                      | <b>TLNGN</b>  | <b>TELANGANA</b>                 |
|                      | <b>TN</b>     | <b>TAMIL NADU</b>                |
|                      | <b>TRP</b>    | <b>TRIPURA</b>                   |
|                      | <b>UP</b>     | <b>UTTAR PRADESH</b>             |
|                      | <b>UTRKND</b> | <b>UTTARAKHAND</b>               |
|                      | <b>VID</b>    | <b>VIDHARBHA</b>                 |
|                      | <b>SHWB</b>   | <b>SUB HIMALAYAN WEST BENGAL</b> |
|                      | <b>GWB</b>    | <b>GANGETIC WEST BENGAL</b>      |
|                      | <b>ARSEA</b>  | <b>ARABIAN SEA</b>               |
|                      | <b>ILS</b>    | <b>ISLANDS</b>                   |
| <b>MISCELLANEOUS</b> | <b>ASSW</b>   | <b>IN ASSOCIATION WITH</b>       |
|                      | <b>ASSTD</b>  | <b>ASSOCIATED</b>                |
|                      | <b>LLC</b>    | <b>LOW LEVEL CIRCULATION</b>     |
|                      | <b>EMBDD</b>  | <b>EMBEDDED</b>                  |
|                      | <b>N/HOOD</b> | <b>NEIGHBOURHOOD</b>             |
|                      | <b>EXT</b>    | <b>EXTREME</b>                   |