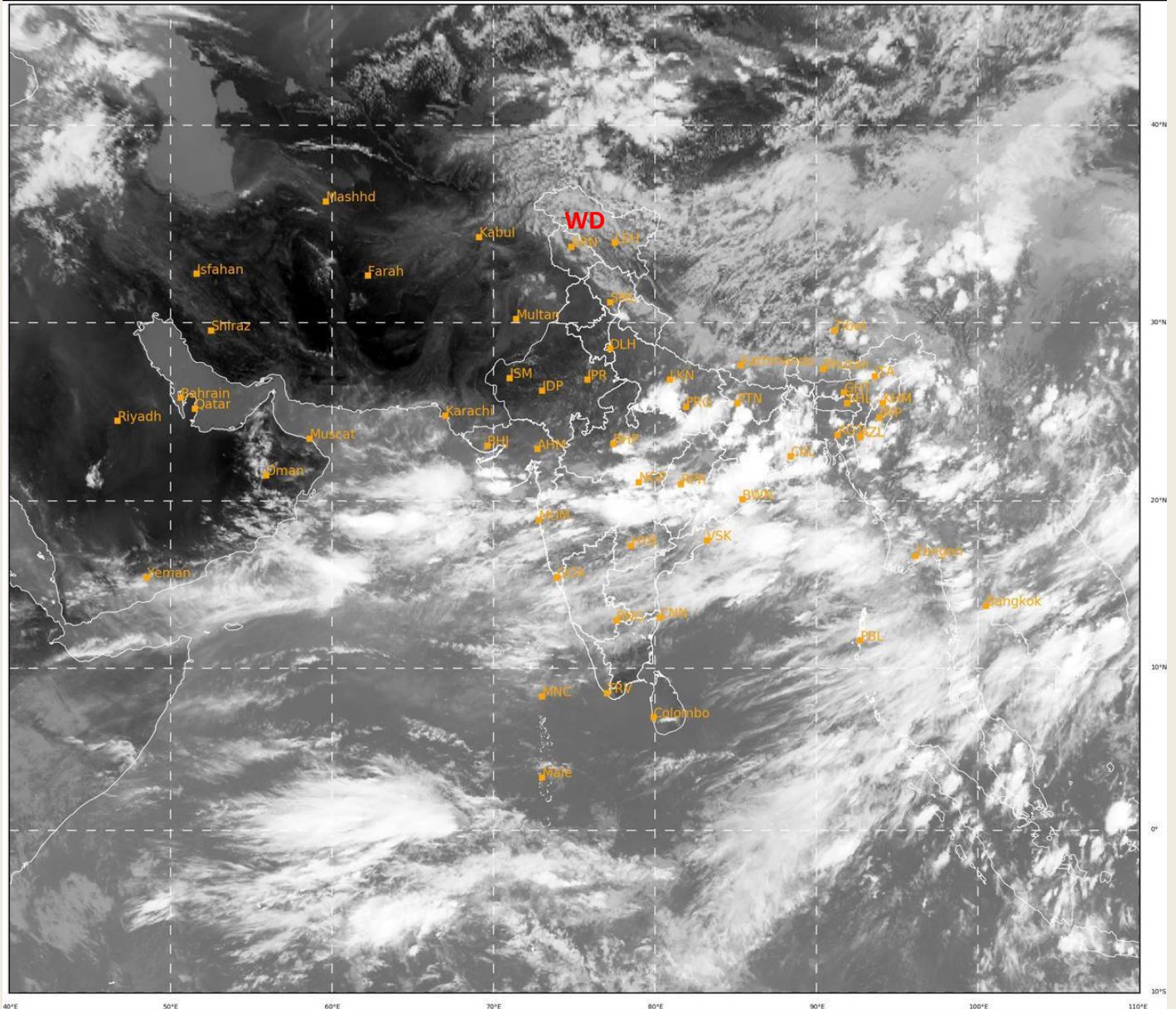


**SATELLITE BULLETIN BASED ON SATELLITE IMAGERIES
AND PRODUCTS**

15.06.2020 TIME 0900 UTC

SAT : INSAT-3D IMG
IMG_TIR1 10.8 um
LIC Mercator

15-06-2020/(0900 to 0926) GMT
15-06-2020/(1430 to 1456) IST



155

949

IMD, DELHI

TCIN50 DEMS 150900

SATELLITE BULLETIN BASED ON INSAT-3D PIC OF 150900 UTC (.)

REGION COVERED BETWEEN LAT 50.0°N TO 30.0°S AND LONG 40.0°E TO 125.0°E (.)

SALIENT FEATURES:-

WESTERN DISTURBANCE (WD) :-

**SCT MULTILAYERED CLOUDS OVER EXT N PAK J&K HP UTRKND NEPAL TIBET ADJ CHINA
IN ASSW **WD** OVER THE AREA (.)**



INSAT-3D 15-JUN-2020 09:00 WV IMG

WATER VAPOUR WIND

(1Kt = 0.5 m/s)

100-250 hPa

251-350 hPa

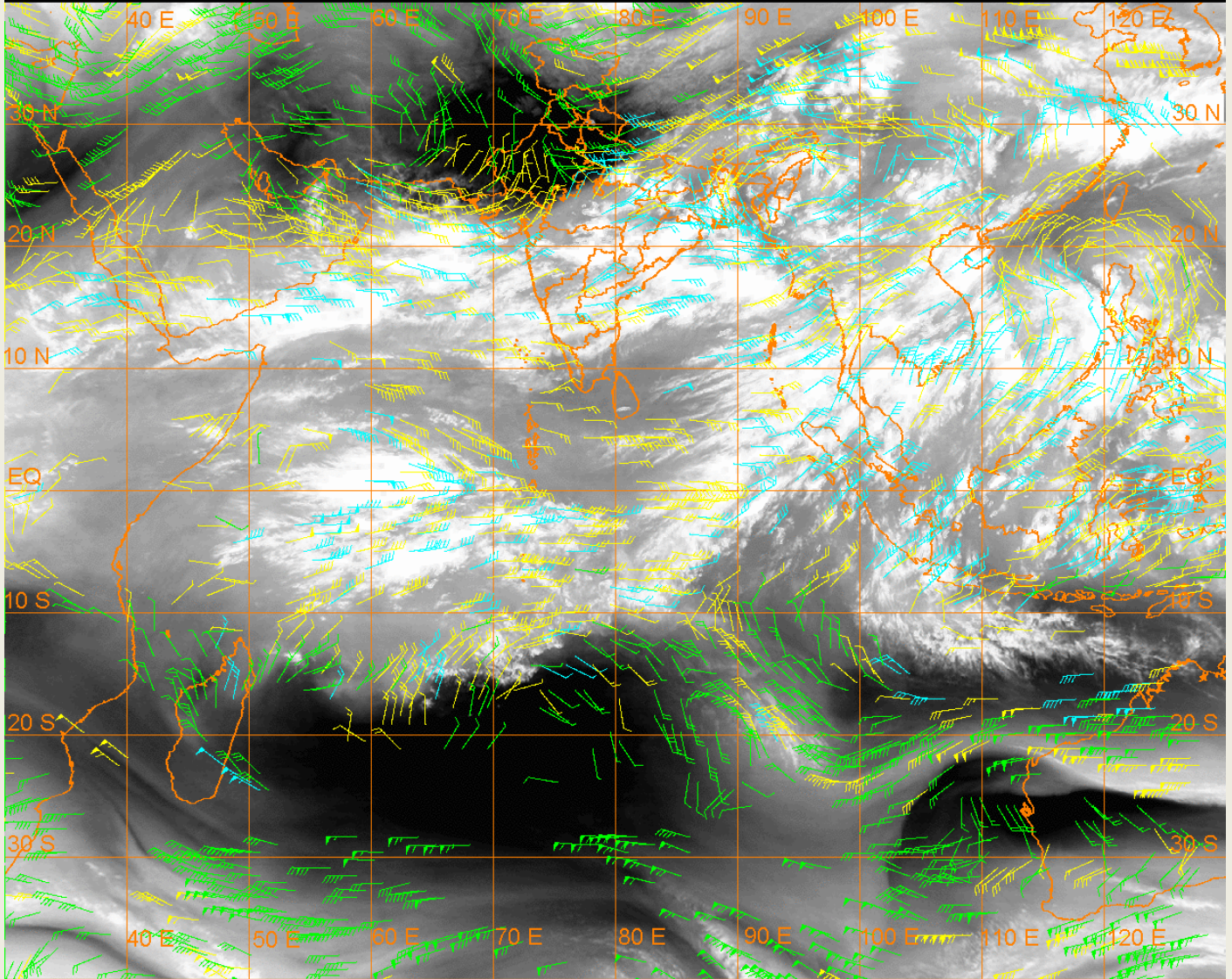
351-500 hPa

10 Kt

15 Kt

20 Kt

50 Kt



CLOUDS DESCRIPTION WITHIN INDIA:-

NORTH :-

SCT LOW/MED CLOUDS WITH EMBDD INT TO V INT CONVTN OVER S UP (.) SCT LOW/MED CLOUDS WITH EMBDD ISOL WK TO MOD CONVTN OVER J&K HP UTRKND NE UP (.) SCT LOW/MED CLOUDS OVER HARY DLH NW UP (.)

EAST :-

SCT LOW/MED CLOUDS WITH EMBDD INT TO V INT CONVTN OVER S CHTGH ORS JHRKND SW BHR GWB (.) SCT LOW/MED CLOUDS WITH EMBDD MOD TO INT CONVTN OVER N CHTGH SHWB ARUPR ASSAM NAGA MANI MIZO (.) SCT LOW/MED CLOUDS WITH EMBDD ISOL WK TO MOD CONVTN OVER REST BHR SKM REST NE STATES (.)

WEST :-

SCT LOW/MED CLOUDS WITH EMBDD INT TO V INT CONVTN OVER SE MP VID M MAHA SW GUJ (.) SCT LOW/MED CLOUDS WITH EMBDD MOD TO INT CONVTN OVER NE MP SE GUJ REST MAHA & GOA (.) SCT LOW/MED CLOUDS OVER RAJ NW MP N GUJ (.)

SOUTH :-

SCT LOW/MED CLOUDS WITH EMBDD INT TO V INT CONVTN OVER N TLNGN (.) (.) SCT LOW/MED CLOUDS WITH EMBDD MOD TO INT CONVTN OVER S TLNGN RYLSM COTL AP KRNTK LKSDP ANDAMAN & NICOBAR ILS (.) SCT LOW/MED CLOUDS WITH EMBDD ISOL WK TO MOD CONVTN OVER KER N TN (.) SCT LOW/MED CLOUDS OVER S TN (.)

ARABIAN SEA :-

SCT TO BKN LOW/MED CLOUDS WITH EMBDD INT TO V INT CONVTN OVER C ADJ N ARSEA
(.) SCT LOW/MED CLOUDS WITH EMBDD MOD TO INT CONVTN OVER LKSDP &N/HOOD (.)

BAY OF BENGAL & ANDAMAN SEA :-

SCT TO BKN LOW/MED CLOUDS WITH EMBDD INT TO V INT CONVTN OVER N BAY & C BAY
ANDAMAN SEA (.)

CLOUDS DESCRIPTION OUTSIDE INDIA:-

SCT LOW/MED CLOUDS WITH EMBDD MOD TO INT CONVTN OVER NEPAL TIBET CHINA
MYANMAR SUMATRA STR OF MALACCA MALAY PENINSULA THAILAND GULF OF
THAILAND CAMBODIA LAOS VIETNAM S CHINA SEA BORNEO JAVA ILS CELEBES ILS &
SEA PHILIPPINES E CHINA SEA AND OVER INDIAN OCEAN BET LAT 5.0N TO 10.0S LONG
40.0E TO 100.0E (.)

TOO 15/1530EF=

NNNN

LEGEND:-

| | | |
|--------|-------|---|
| REGION | NORTH | J&K HP PJB HARY DLH UP UTRKND |
| | EAST | BHR JHRKND CHTGH ORS WB SKMNE STATES |
| | WEST | RAJ MP GUJ MAHA GOA |
| | SOUTH | TLNGN AP KRNTK KER TN LKSDP ANDAMAN & NICOBAR ILS |

| | | |
|--|--------------|--|
| CLOUD DISTRIBUTION | ISOL | ISOLATED (LESS THAN 25%) |
| | SCT | SCATTERED (25 TO 50%) |
| | BKN | BROKEN (51 TO 75%) |
| | SLD | SOLID (GREATER THAN 75%) |
| TEMPERATURE | CTT | CLOUD TOP TEMPERATURE |
| CONVECTION | WK CONVTN | WEAK CONVECTION (CTT GREATER THAN -25°C) |
| | MOD CONVTN | MODERATE CONVECTION (CTT BETWEEN -25°C TO -40°C) |
| | INT CONVTN | INTENSE CONVECTION (CTT BETWEEN -41°C TO -70°C) |
| | V INT CONVTN | VERY INTENSE CONVECTION (CTT LESS THAN -70°C) |
| METEOROLOGICAL SUB-DIVISION, STATES, & UTS | ARUPR | ARUNACHAL PRADESH |
| | BHR | BIHAR |
| | CHTGH | CHHATTISGARH |

| | |
|------------------------|-------------------------------------|
| COTL AP | COASTAL ANDHRA PRADESH |
| COTL KRNTK | COASTAL KARNATAKA |
| COTL ORS | COASTAL ORISSA |
| GUJ | GUJARAT |
| GWB | GANGETIC WEST BENGAL |
| HARY | HARYANA |
| HP | HIMACHAL PRADESH |
| J&K | JAMMU AND KASHMIR |
| JHRKND | JHARKHAND |
| KER | KERALA |
| KKN | KONKAN |
| LKSDP | LAKSHADWEEP |
| M MAHA | MADHYA MAHARASHTRA |
| MAHA | MAHARASHTRA |
| MANI | MANIPUR |
| MEGHA | MEGHALAYA |
| MIZO | MIZORAM |
| MP | MADHYA PRADESH |
| MRTHWD | MARATHWADA |
| NAGA | NAGALAND |
| | NORTH COASTAL ANDHRA PRADESH |
| NIK | NORTH INTERIOR KARNATAKA |
| ORS | ORISSA |
| PJB | PUNJAB |
| RAJ | RAJASTHAN |
| RYLSM | RAYALASEEMA |
| SAU & KUTCH | SAURASHTRA & KUTCH |
| SHWB | SUB-HIMALAYAN WEST BENGAL |
| SIK | SOUTH INTERIOR KARNATAKA |
| SKM | SIKKIM |
| TLNGN | TELANGANA |
| TN | TAMIL NADU |
| TRP | TRIPURA |
| UP | UTTAR PRADESH |
| UTRKND | UTTARAKHAND |
| VID | VIDHARBHA |

| | | |
|----------------------|---------------|------------------------------|
| | WB | WEST BENGAL |
| | ARSEA | ARABIAN SEA |
| | ILS | ISLANDS |
| MISCELLANEOUS | ASSW | IN ASSOCIATION WITH |
| | ASSTD | ASSOCIATED |
| | LLC | LOW LEVEL CIRCULATION |
| | EMBDD | EMBEDDED |
| | N/HOOD | NEIGHBOURHOOD |
| | EXT | EXTREME |