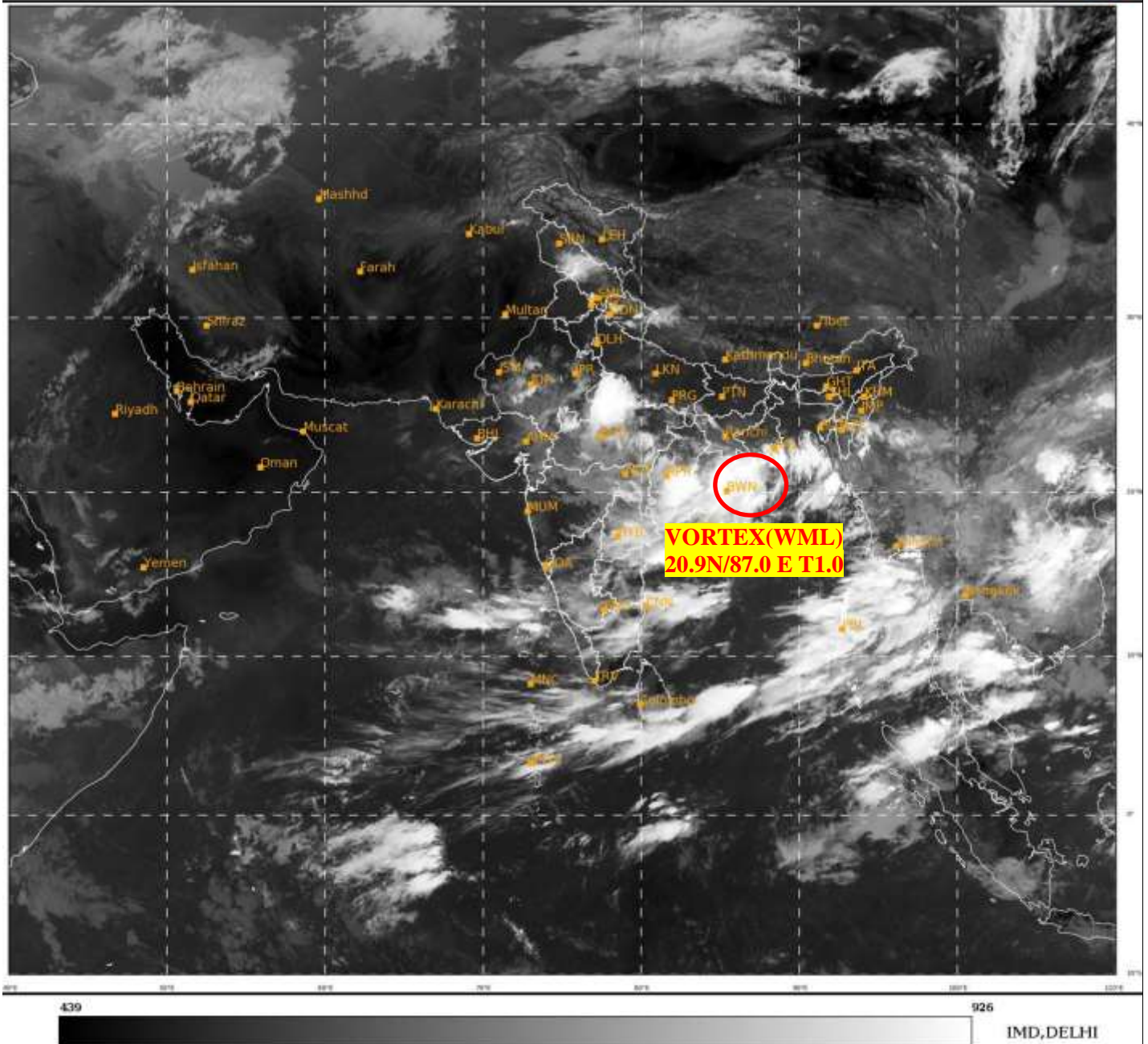




**SATELLITE BULLETIN BASED ON SATELLITE  
IMAGERIES AND PRODUCTS**  
**14.09.2023 TIME 0300 UTC**

SAT : INSAT-3DR IMG  
IMG\_TIR1 10.8 um  
LIC Mercator

14-09-2023/(0315 to 0342) GMT  
14-09-2023/(0845 to 0912) IST



TCIN50 DEMS 140300

SATELLITE BULLETIN BASED ON INSAT-3D PIC OF 140300 UTC (.)

REGION COVERED BETWEEN LAT 50.0°N TO 35.0°S AND LONG 40.0°E TO 125.0°E (.)

**SALIENT FEATURES:-**

**VORTEX (WML) OVER NORTH-WEST BAY OFF N ORS COAST :-**

VORTEX (WML) OVER NW BAY OFF N ORS COAST LAY CENTERED WITHIN HALF A DEGREE OF **20.9N/87.0E** (.) INTENSITY **T1.0/1.0** (.) SCT TO BKN LOW/MED CLOUDS WITH EMBDD INT TO V INT OVER NW ADJ WC BAY ORS COTL GWB (.) MINIMUM CTT MINUS **90** DEG CEL (.)

**THUNDERSTORM / CONVECTIVE ACTIVITY:-**

MODERATE TO INTENSE THUNDERSTORM / CONVECTIVE ACTIVITY OBSERVED OVER NW MP SW UP CHTGH ORS COTL GWB ANDAMAN ILS (.)





INSAT-3D 14-SEP-2023 03:00 WV IMG

WATER VAPOUR WIND

(1Kt = 0.5 m/s)

10 Kt

15 Kt

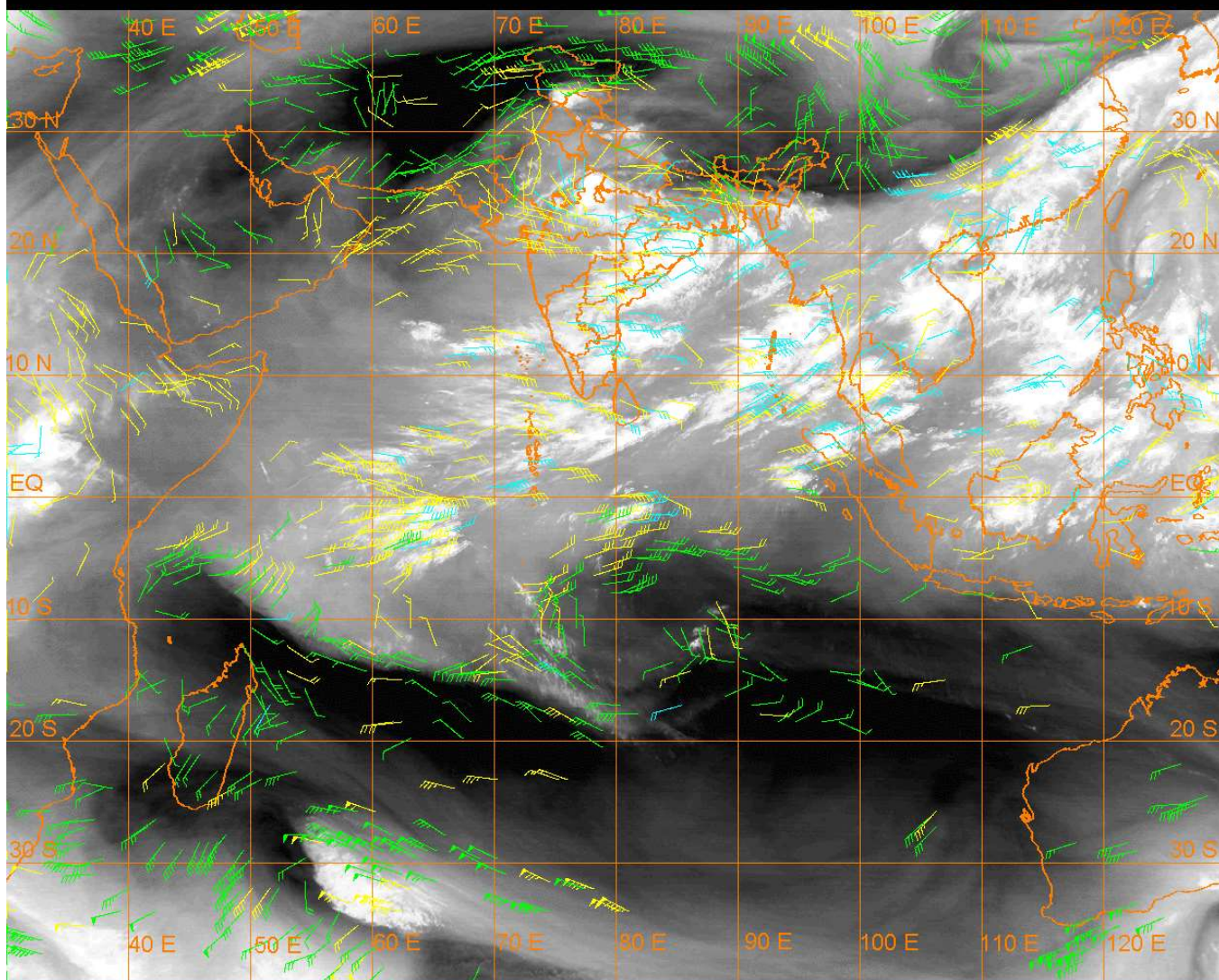
20 Kt

50 Kt

100-250 hPa

251-350 hPa

351-500 hPa



#### CLOUDS DESCRIPTION WITHIN INDIA:-

##### NORTH:-

SCT LOW/MED CLOUDS WITH EMBDD INT TO V INT CONVTN OVER SW UP (MINIMUM **CTT MINUS 75 DEG** CEL) (.) SCT LOW/MED CLOUDS WITH EMBDD MOD TO INT CONVTN OVER S J&K NW HP UTRKND (.) SCT LOW/MED CLOUDS WITH EMBDD ISOL WK TO MOD CONVTN OVER N J&K SE UP (.) SCT LOW/MED CLOUDS OVER LADAKH PJB HARY DLH N UP (.)

##### EAST:-

SCT TO BKN LOW/MED CLOUDS WITH EMBDD INT TO V INT CONVTN OVER ORS COTL GWB (MINIMUM **CTT MINUS 90 DEG** CEL) (.) SCT LOW/MED CLOUDS WITH EMBDD MOD TO INT CONVTN OVER CHTGH NW JHRKND AND ISOL WK TO MOD CONVTN OVER S JHRKND SKM S ASSAM MANI MIZO TRP (.) SCT LOW/MED CLOUDS OVER BHR N GWB SHWB REST NE STATES (.)

##### WEST:-

SCT TO BKN LOW/MED CLOUDS WITH EMBDD INT TO V INT CONVTN OVER NW MP (MINIMUM **CTT MINUS 85 DEG** CEL) (.) SCT LOW/MED CLOUDS WITH EMBDD MOD TO INT CONVTN OVER E MP E VID AND WK TO MOD CONVTN OVER RAJ REST MP MRTHWD NORTH M MAHA E GUJ (.) SCT LOW/MED CLOUDS OVER W GUJ REST MAHA & GOA (.)

##### SOUTH:-

SCT LOW/MED CLOUDS WITH EMBDD MOD TO INT CONVTN OVER COTL AP S TLNGN NE TN ANDAMAN & NICOBAR ILS AND WK TO MOD CONVTN OVER KRNTK N TLNGN RYLSM KER REST TN LKSDP ILS (.)

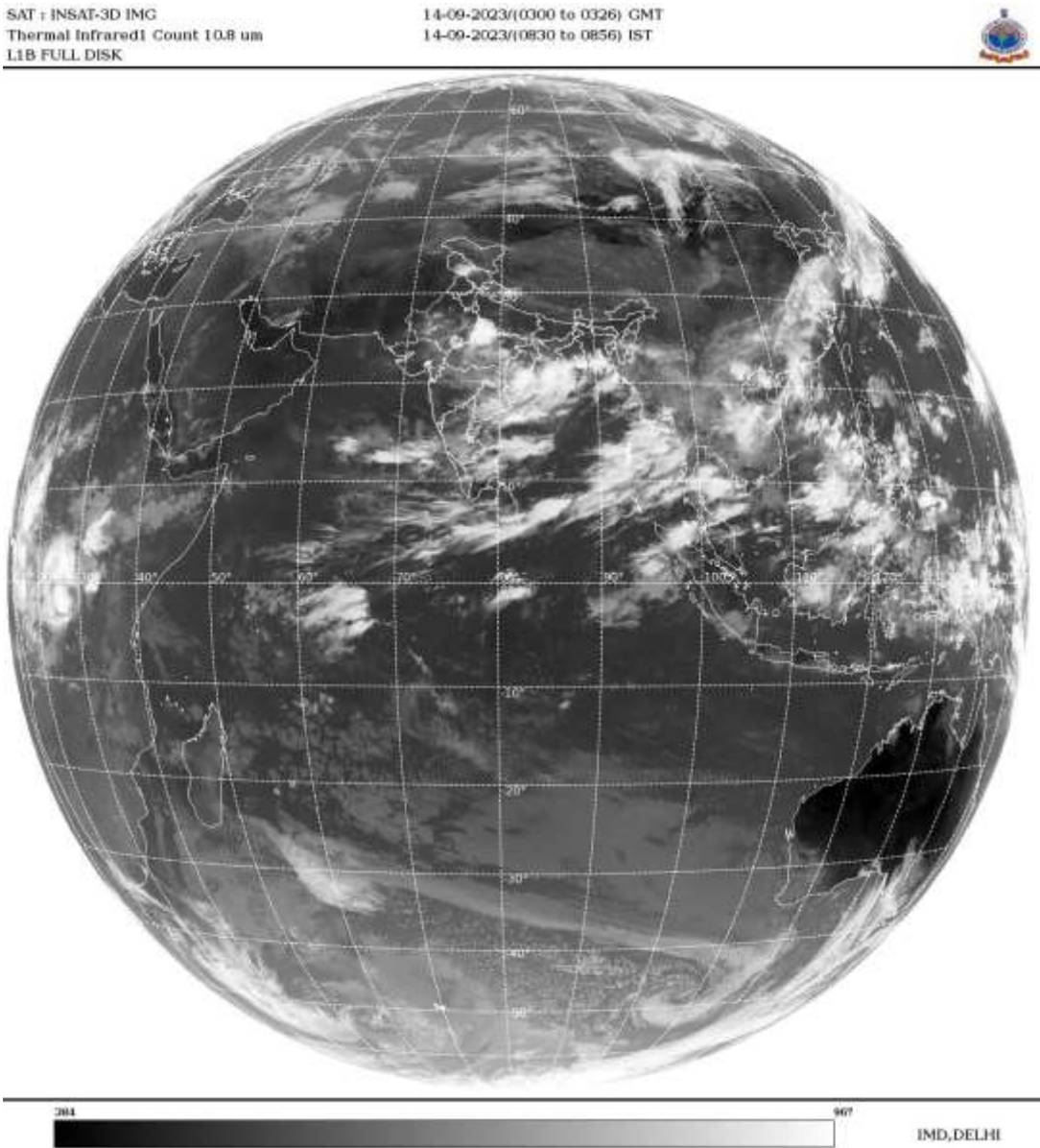
##### ARABIAN SEA:-

SCT LOW/MED CLOUDS WITH EMBDD MOD TO INT CONVTN OVER EC & SE ARSEA COMORIN AREA LKSDP ILS AREA (.)

**BAY OF BENGAL & ANDAMAN SEA:-**

SCT TO BKN LOW/MED CLOUDS WITH EMBDD INT TO V INT CONVTN OVER BAY N ANDAMAN SEA (.) SCT LOW/MED CLOUDS WITH EMBDD MOD TO INT CONVTN OVER GULF OF MARTABAN S ANDAMAN SEA (.)

**CLOUDS DESCRIPTION OUTSIDE INDIA:-**



SCT LOW/MED CLOUDS WITH EMBDD MOD TO INT CONVTN OVER S SRI LANKA MALDIVES CHINA MYANMAR THAILAND GULF OF THAILAND CAMBODIA LAOS VIETNAM GULF OF TONKIN N SUMATRA ADJ W COAST STR OF MALACCA MALASIYA BORNEO SOUTH CHINA SEA CELEBES ILS & SEA PHILIPPINES EAST CHINA SEA YELLOW SEA AND OVER INDIAN OCEAN BET LAT 5.0N TO 6.0S LONG 60.0E TO 100.0E (.)

TOO 14/0950 HRS IST=

NNNN

**LEGEND:-**

|        |       |  |
|--------|-------|--|
| REGION | NORTH | J&K HP PJB HARY DLH UP UTRKND                        |
|        | EAST  | BHR JHRKND CHTGH OR WB SKM<br>NORTH- EAST STATES     |
|        | WEST  | RAJ MP GUJ MAHA GOA                                  |
|        | SOUTH | TLNGN AP KRNTK KER TN LKSDP<br>ANDAMAN & NICOBAR ILS |

|   |                        |   |
|---|------------------------|---|
| <b>CLOUD DISTRIBUTION</b>   | <b>ISOL</b>            | <b>ISOLATED (LESS THAN 25%)</b>                             |
|   | <b>SCT</b>             | <b>SCATTERED (25 TO 50%)</b>                                |
|   | <b>BKN</b>             | <b>BROKEN (51 TO 75%)</b>                                   |
|   | <b>SLD</b>             | <b>SOLID (GREATER THAN 75%)</b>                             |
| <b>CLOUDS TOP TEMPERATURE</b>   | <b>CTT</b>             | <b>CLOUD TOP TEMPERATURE</b>                                |
| <b>CONVECTION</b>   | <b>WK CONVTN</b>       | <b>WEAK CONVECTION<br/>(CTT GREATER THAN -25°C)</b>         |
|   | <b>MOD CONVTN</b>      | <b>MODERATE CONVECTION<br/>(CTT BETWEEN -25°C TO -40°C)</b> |
|   | <b>INT CONVTN</b>      | <b>INTENSE CONVECTION<br/>(CTT BETWEEN -41°C TO -70°C)</b>  |
|   | <b>V INT CONVTN</b>    | <b>VERY INTENSE CONVECTION<br/>(CTT LESS THAN -70°C)</b>    |
| <b>METEOROLOGICAL<br/>SUB- DIVISIONS,<br/>STATES &amp; UNION<br/>TERITORIES</b> | <b>ARUPR</b>           | <b>ARUNACHAL PRADESH</b>                                    |
|   | <b>BHR</b>             | <b>BIHAR</b>  |
|   | <b>CHTGH</b>           | <b>CHHATTISGARH</b>   |
|   | <b>COTL AP</b>         | <b>COASTAL ANDHRA PRADESH</b>                               |
|   | <b>COTL KRNTK</b>      | <b>COASTAL KARNATAKA</b>                                    |
|   | <b>COTL ORS</b>        | <b>COASTAL ORISSA</b>                                       |
|   | <b>GUJ</b>             | <b>GUJARAT</b>  |
|   | <b>GWB</b>             | <b>GANGETIC WEST BENGAL</b>                                 |
|   | <b>HARY</b>            | <b>HARYANA</b>  |
|   | <b>DLH</b>             | <b>DELHI</b>  |
|   | <b>HP</b>              | <b>HIMACHAL PRADESH</b>                                     |
|   | <b>J&amp;K</b>         | <b>JAMMU AND KASHMIR</b>                                    |
|   | <b>JHRKND</b>          | <b>JHARKHAND</b>  |
|   | <b>KER</b>             | <b>KERALA</b>   |
|   | <b>KKN</b>             | <b>KONKAN</b>   |
|   | <b>LKSDP</b>           | <b>LAKSHADWEEP</b>  |
|   | <b>M MAHA</b>          | <b>MADHYA MAHARASHTRA</b>                                   |
|   | <b>MAHA</b>            | <b>MAHARASHTRA</b>  |
|   | <b>MANI</b>            | <b>MANIPUR</b>  |
|   | <b>MEGHA</b>           | <b>MEGHALAYA</b>  |
|   | <b>MIZO</b>            | <b>MIZORAM</b>  |
|   | <b>MP</b>              | <b>MADHYA PRADESH</b>                                       |
|   | <b>MRTHWD</b>          | <b>MARATHWADA</b>   |
|   | <b>NAGA</b>            | <b>NAGALAND</b>   |
|   | <b>N COTL AP</b>       | <b>NORTH COASTAL ANDHRA<br/>PRADESH</b>                     |
|   | <b>NIK</b>             | <b>NORTH INTERIOR KARNATAKA</b>                             |
|   | <b>ORS</b>             | <b>ORISSA</b>   |
|   | <b>PJB</b>             | <b>PUNJAB</b>   |
|   | <b>RAJ</b>             | <b>RAJASTHAN</b>  |
|   | <b>RYLSM</b>           | <b>RAYALASEEMA</b>  |
|   | <b>SAU &amp; KUTCH</b> | <b>SAURASHTRA &amp; KUTCH</b>                               |
|   | <b>SHWB</b>            | <b>SUB-HIMALAYAN WEST BENGAL</b>                            |
|   | <b>SIK</b>             | <b>SOUTH INTERIOR KARNATAKA</b>                             |
|   | <b>SKM</b>             | <b>SIKKIM</b>   |



|                      |               |                                  |
|----------------------|---------------|----------------------------------|
|                      | <b>TLNGN</b>  | <b>TELANGANA</b>                 |
|                      | <b>TN</b>     | <b>TAMIL NADU</b>                |
|                      | <b>TRP</b>    | <b>TRIPURA</b>                   |
|                      | <b>UP</b>     | <b>UTTAR PRADESH</b>             |
|                      | <b>UTRKND</b> | <b>UTTARAKHAND</b>               |
|                      | <b>VID</b>    | <b>VIDHARBHA</b>                 |
|                      | <b>SHWB</b>   | <b>SUB HIMALAYAN WEST BENGAL</b> |
|                      | <b>GWB</b>    | <b>GANGETIC WEST BENGAL</b>      |
|                      | <b>ARSEA</b>  | <b>ARABIAN SEA</b>               |
|                      | <b>ILS</b>    | <b>ISLANDS</b>                   |
| <b>MISCELLANEOUS</b> | <b>ASSW</b>   | <b>IN ASSOCIATION WITH</b>       |
|                      | <b>ASSTD</b>  | <b>ASSOCIATED</b>                |
|                      | <b>LLC</b>    | <b>LOW LEVEL CIRCULATION</b>     |
|                      | <b>EMBDD</b>  | <b>EMBEDDED</b>                  |
|                      | <b>N/HOOD</b> | <b>NEIGHBOURHOOD</b>             |
|                      | <b>EXT</b>    | <b>EXTREME</b>                   |