



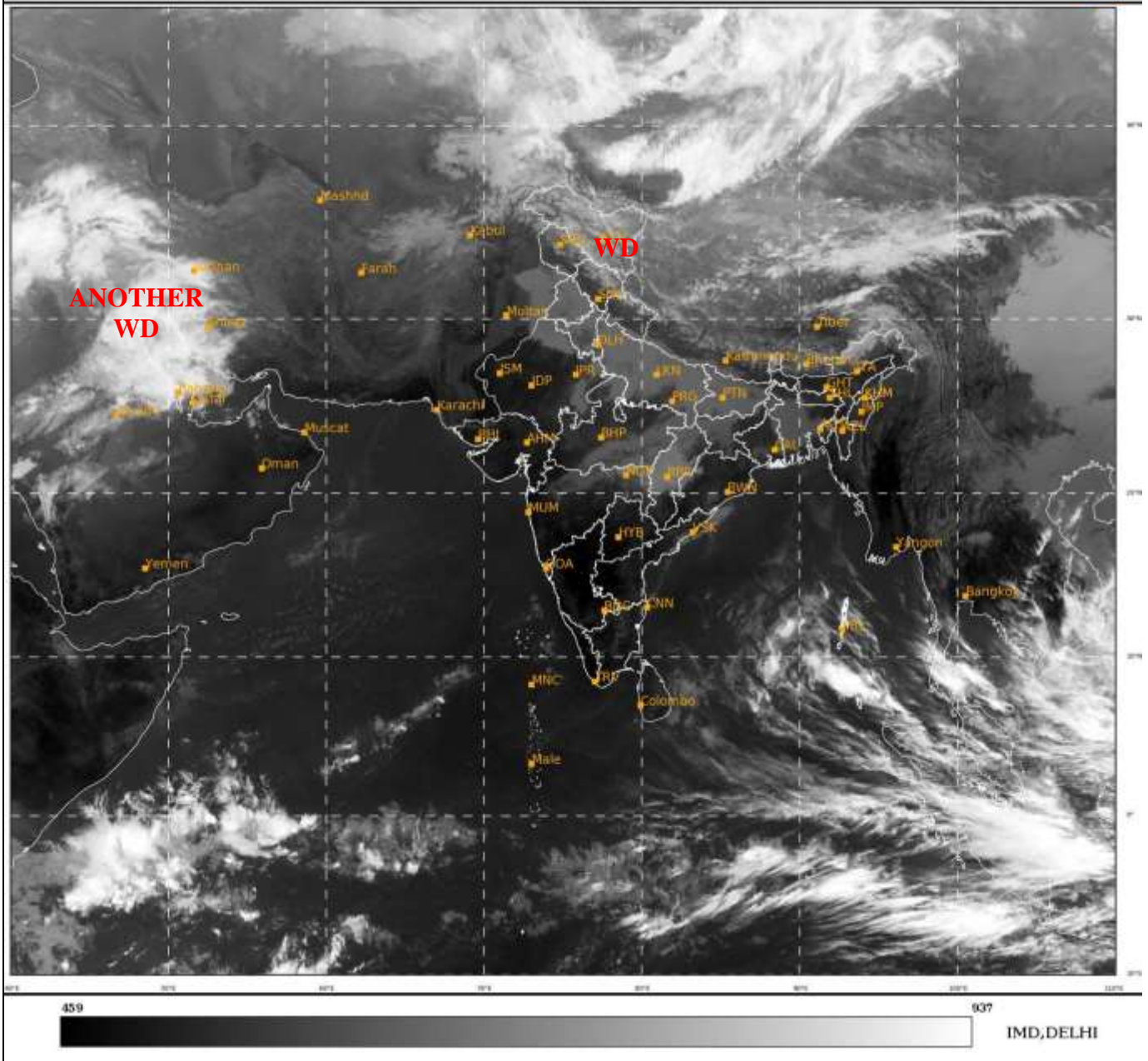
भारत मौसम विज्ञान विभाग
पृथ्वी विज्ञान मंत्रालय
India Meteorological Department
Ministry of Earth Sciences



**SATELLITE BULLETIN BASED ON SATELLITE
IMAGERIES AND PRODUCTS**
04.01.2023 TIME 0600 UTC

SAT : INSAT-3D IMG
IMG_TIR1 10.8 um
LIC Mercator

04-01-2023/(0600 to 0627) GMT
04-01-2023/(1130 to 1157) IST



TCIN50 DEMS 040600

SATELLITE BULLETIN BASED ON INSAT-3D PIC OF 040600 UTC (.)

REGION COVERED BETWEEN LAT 50.0°N TO 35.0°S AND LONG 40.0°E TO 125.0°E (.)

SALIENT FEATURES:-

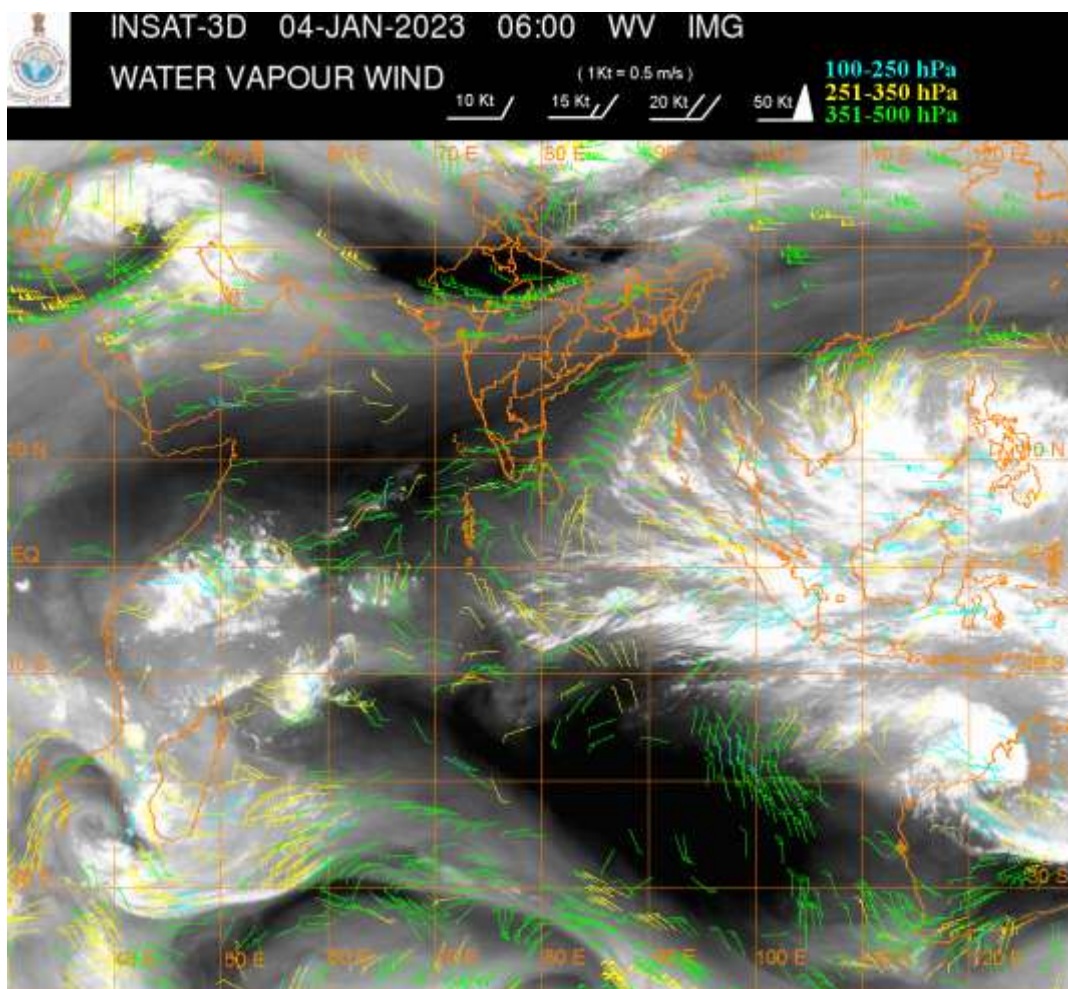
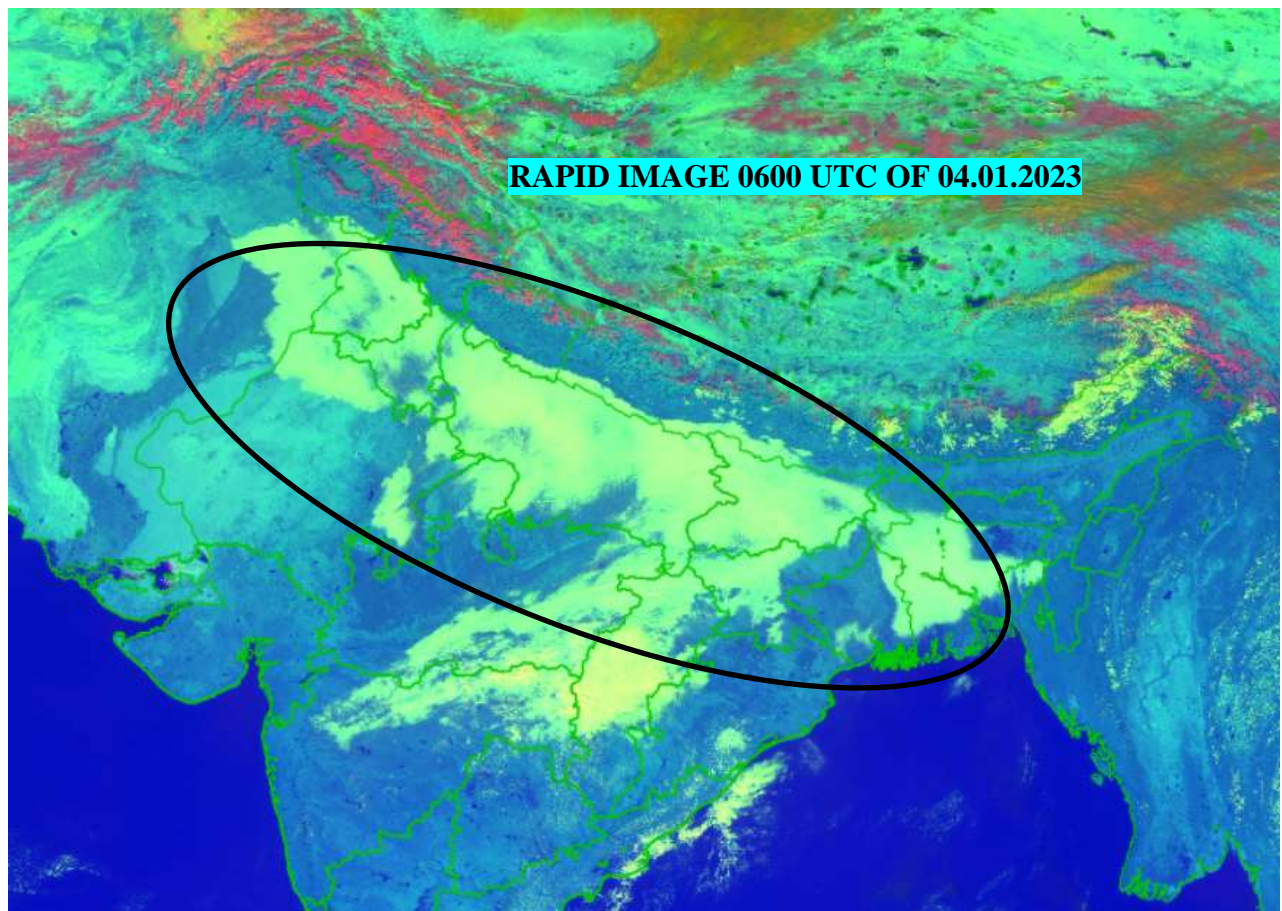
WESTERN DISTURBANCE:-

SCT MULTILAYERED CLOUDS OVER LADAKH TIBET ADJ CHINA IN ASSW **WD** OVER THE AREA (.)

SCT MULTILAYERED CLOUDS OVER IRAQ W IRAN AND N/HOOD IN ASSW **ANOTHER WD** OVER THE AREA (.)

FOG / LOW CLOUDS:-

DAY MICROPHYSICS IMAGERY OF INSAT-3D (RAPID) AT 0600 UTC INDICATES SCT TO BKN FOG / LOW CLOUDS OVER NE PAK S UTRKND PJB HARY DLH N RAJ UP BHR S NEPAL MP N CHTGH JHRKND GWB S SHWB TRP & BD (.)



CLOUDS DESCRIPTION WITHIN INDIA:-

NORTH:-

SCT LOW/MED CLOUDS WITH EMBDD ISOL WK TO MOD CONVTN OVER J&K LADAKH N HP N UTRKND (.) ISOL LOW/MED CLOUDS OVER J&K S HP S UTRKND (.)

EAST:-

SCT LOW/MED CLOUDS WITH EMBDD WK TO MOD CONVTN OVER C CHTGH SKM ARUPR (.) SCT LOW/MED CLOUDS OVER REST CHTGH ORS N SHWB REST NE STATES (.)

WEST:-

SCT LOW/MED CLOUDS OVER S MP MAHA (.)

SOUTH:-

SCT LOW/MED CLOUDS WITH EMBDD INT TO V INT CONVTN OVER NICOBAR ILS AND WK CONVTN OVER ANDAMAN ILS (.) SCT LOW/MED CLOUDS OVER SIK TLNGN RYLSM COTL AP KER TN LKSDP ILS (.)

ARABIAN SEA:-

SCT LOW/MED CLOUDS WITH EMBDD ISOL MOD TO INT CONVTN OVER SE ARSEA (.)

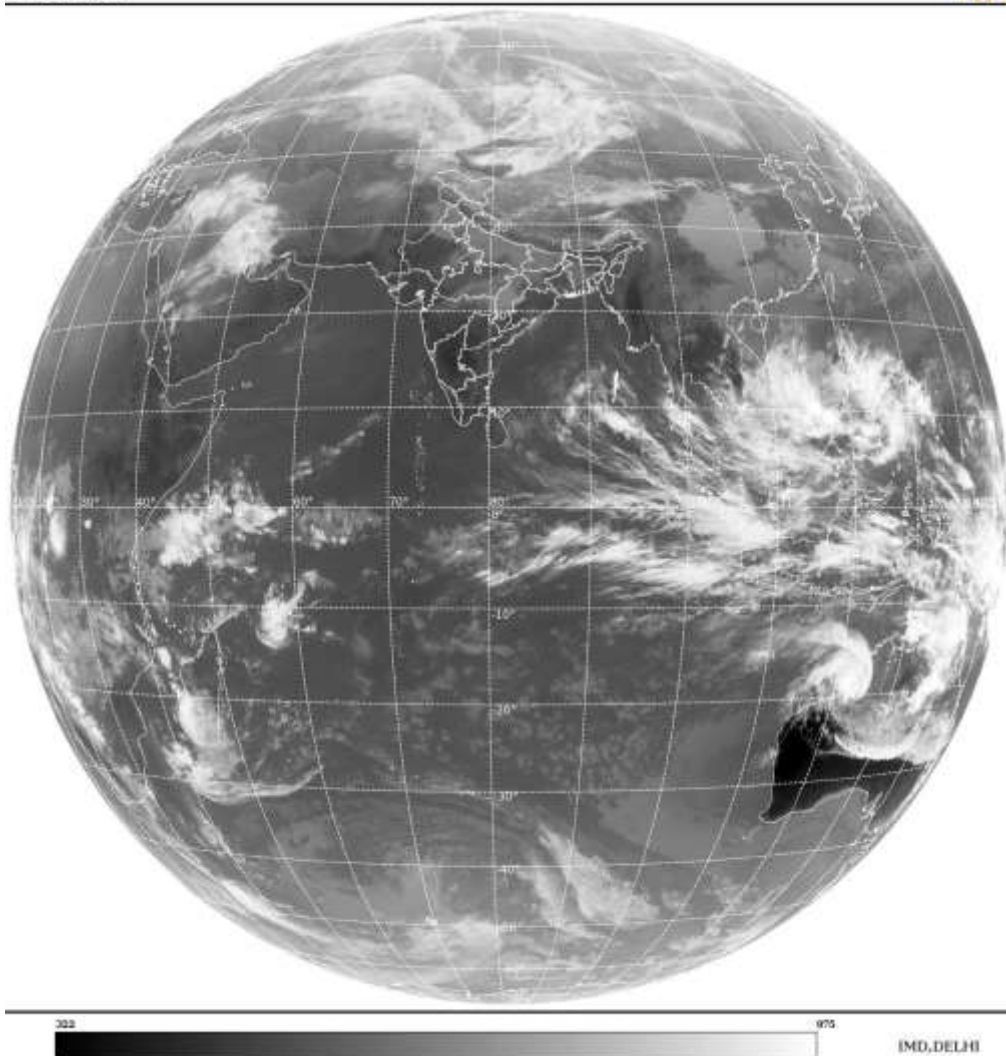
BAY OF BENGAL & ANDAMAN SEA:-

SCT LOW/MED CLOUDS WITH EMBDD INT TO V INT CONVTN OVER SE BAY AND S ANDAMAN SEA (.) SCT LOW/MED CLOUDS WITH EMBDD MOD TO INT CONVTN OVER EC BAY AND N ANDAMAN SEA (.) SCT LOW/MED CLOUDS OVER REST BAY (.)

CLOUDS DESCRIPTION OUTSIDE INDIA:-

SAT : INSAT-3D IMG
Thermal Infrared1 Count 10.8 um
L1B FULL DISK

04-01-2023(0900 to 0627) GMT
04-01-2023(1130 to 1157) IST



SCT LOW/MED CLOUDS WITH EMBDD MOD TO INT CONVTN OVER NEPAL BHUTAN TIBET CHINA S THAILAND GULF OF THAILAND CAMBODIA S LAOS VIETNAM SUMATRA STR OF MALACCA MALAYSIA BORNEO SOUTH CHINA SEA JAVA ILS & SEA CELEBES ILS & SEA PHILIPPINES SULU SEA MADAGASCAR MOZAMBIQUE CHANNEL AND OVER INDIAN OCEAN BET LAT 5.0N TO 10.0S LONG 40.0E TO 110.0E AND BET LAT 10.0S TO 30.0S LONG 40.0E TO 60.0E (.)

TOO 04/1230 HRS IST=

NNNN

LEGEND:-

REGION	NORTH	J&K HP PJB HARY DLH UP UTRKND
	EAST	BHR JHRKND CHTGH OR WB SKM NORTH- EAST STATES
	WEST	RAJ MP GUJ MAHA GOA
	SOUTH	TLNGN AP KRNTK KER TN LKSDP ANDAMAN & NICOBAR ILS

CLOUD DISTRIBUTION	ISOL	ISOLATED (LESS THAN 25%)
	SCT	SCATTERED (25 TO 50%)
	BKN	BROKEN (51 TO 75%)
	SLD	SOLID (GREATER THAN 75%)
CLOUDS TOP TEMPERATURE	CTT	CLOUD TOP TEMPERATURE
CONVECTION	WK CONVTN	WEAK CONVECTION (CTT GREATER THAN -25°C)
	MOD CONVTN	MODERATE CONVECTION (CTT BETWEEN -25°C TO -40°C)
	INT CONVTN	INTENSE CONVECTION (CTT BETWEEN -41°C TO -70°C)
	V INT CONVTN	VERY INTENSE CONVECTION (CTT LESS THAN -70°C)
METEOROLOGICAL SUB-DIVISIONS, STATES & UNION TERRITORIES	ARUPR	ARUNACHAL PRADESH
	BHR	BIHAR
	CHTGH	CHHATTISGARH
	COTL AP	COASTAL ANDHRA PRADESH
	COTL KRNTK	COASTAL KARNATAKA
	COTL ORS	COASTAL ORISSA
	GUJ	GUJARAT
	GWB	GANGETIC WEST BENGAL
	HARY	HARYANA
	DLH	DELHI
	HP	HIMACHAL PRADESH
	J&K	JAMMU AND KASHMIR
	JHRKND	JHARKHAND
	KER	KERALA
	KKN	KONKAN
	LKSDP	LAKSHADWEEP
	M MAHA	MADHYA MAHARASHTRA
	MAHA	MAHARASHTRA
	MANI	MANIPUR
	MEGHA	MEGHALAYA
	MIZO	MIZORAM
	MP	MADHYA PRADESH
		MRTHWD
NAGA		NAGALAND
N COTL AP		NORTH COASTAL ANDHRA PRADESH

	NIK	NORTH INTERIOR KARNATAKA
	ORS	ORISSA
	PJB	PUNJAB
	RAJ	RAJASTHAN
	RYLSM	RAYALASEEMA
	SAU & KUTCH	SAURASHTRA & KUTCH
	SHWB	SUB-HIMALAYAN WEST BENGAL
	SIK	SOUTH INTERIOR KARNATAKA
	SKM	SIKKIM
	TLNGN	TELANGANA
	TN	TAMIL NADU
	TRP	TRIPURA
	UP	UTTAR PRADESH
	UTRKN	UTTARAKHAND
	VID	VIDHARBHA
	SHWB	SUB HIMALAYAN WEST BENGAL
	GWB	GANGETIC WEST BENGAL
	ARSEA	ARABIAN SEA
	ILS	ISLANDS
MISCELLANEOUS	ASSW	IN ASSOCIATION WITH
	ASSTD	ASSOCIATED
	LLC	LOW LEVEL CIRCULATION
	EMBDD	EMBEDDED
	N/HOOD	NEIGHBOURHOOD
	EXT	EXTREME