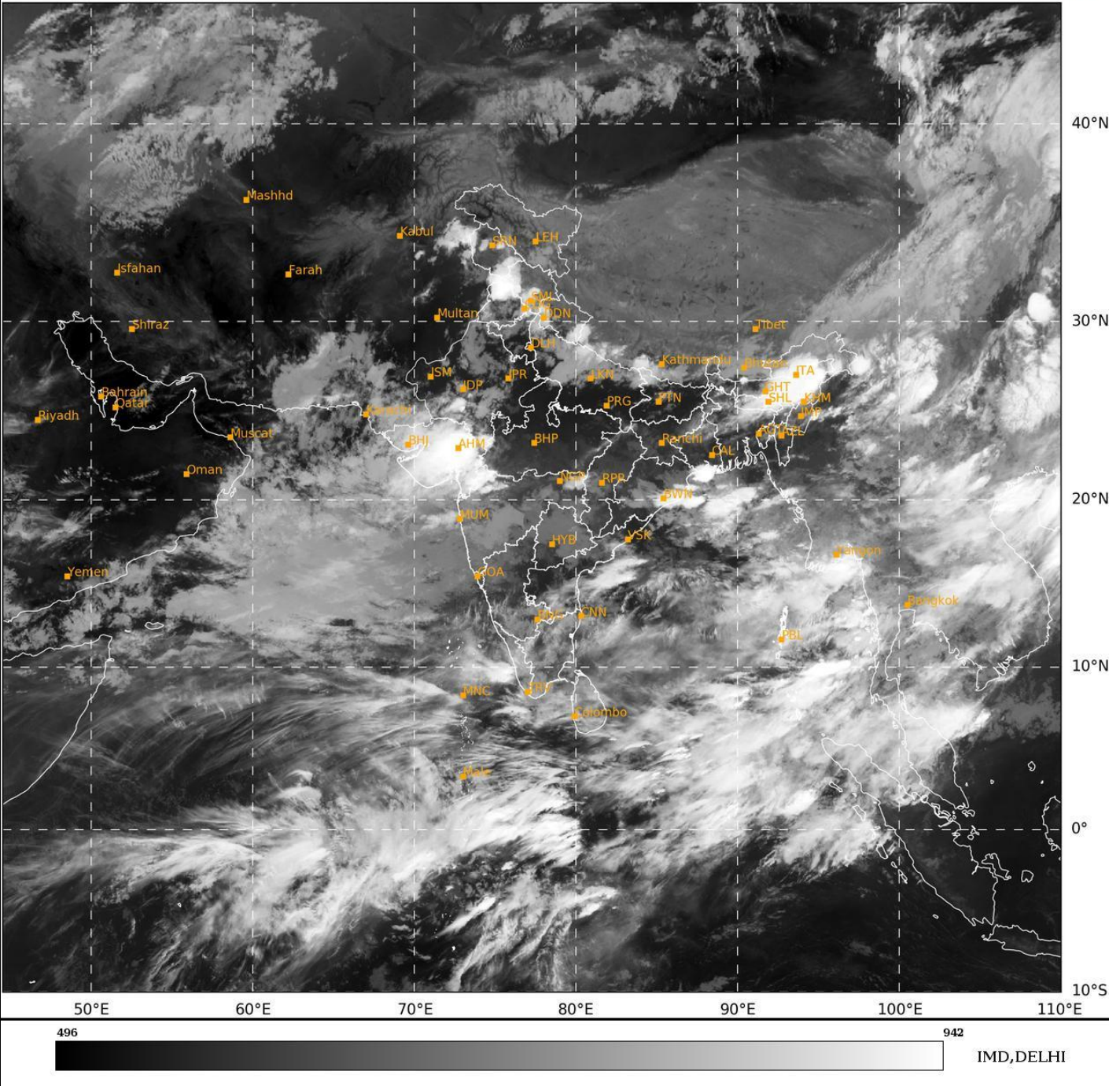




**SATELLITE BULLETIN BASED ON SATELLITE
IMAGERIES AND PRODUCTS**
29.07.2024 TIME 0000 UTC

SAT : INSAT-3DR IMG
IMG_TIR1 10.8 um
L1C Mercator

29-07-2024/(0015 to 0042) GMT
29-07-2024/(0545 to 0612) IST



TCIN50 DEMS 290000

SATELLITE BULLETIN BASED ON INSAT-3DR PIC OF 290015 UTC (.)

REGION COVERED BETWEEN LAT 50.0°N TO 35.0°S AND LONG 40.0°E TO 125.0°E (.)

SALIENT FEATURES:-

CONVECTIVE / THUNDERSTORM ACTIVITY:-

INTENSE TO VERY INTENSE CONVECTIVE / THUNDERSTORM ACTIVITY OBSERVED OVER J&K W HP N PJB E ORS COTL GWB MEGHA ASSAM ARUPR NAGA SE RAJ EXT SW MP GUJ NORTH MADHYA MAHA NICOBAR ILS (MINIMUM **CTT MINUS 70-93 DEG CEL**) (.)

MODERATE TO INTENSE CONVECTIVE / THUNDERSTORM ACTIVITY OBSERVED OVER S UTRKND S PJB N HARY N UP NW BHR NE VID RYLSM KER N TN LKSDP ILS ANDAMAN ILS (MINIMUM **CTT MINUS 40-60 DEG CEL**) (.)



INSAT-3DR 29-JUL-2024 00:15 WV IMG

WATER VAPOUR WIND

(1Kt = 0.5 m/s)

10 Kt

15 Kt

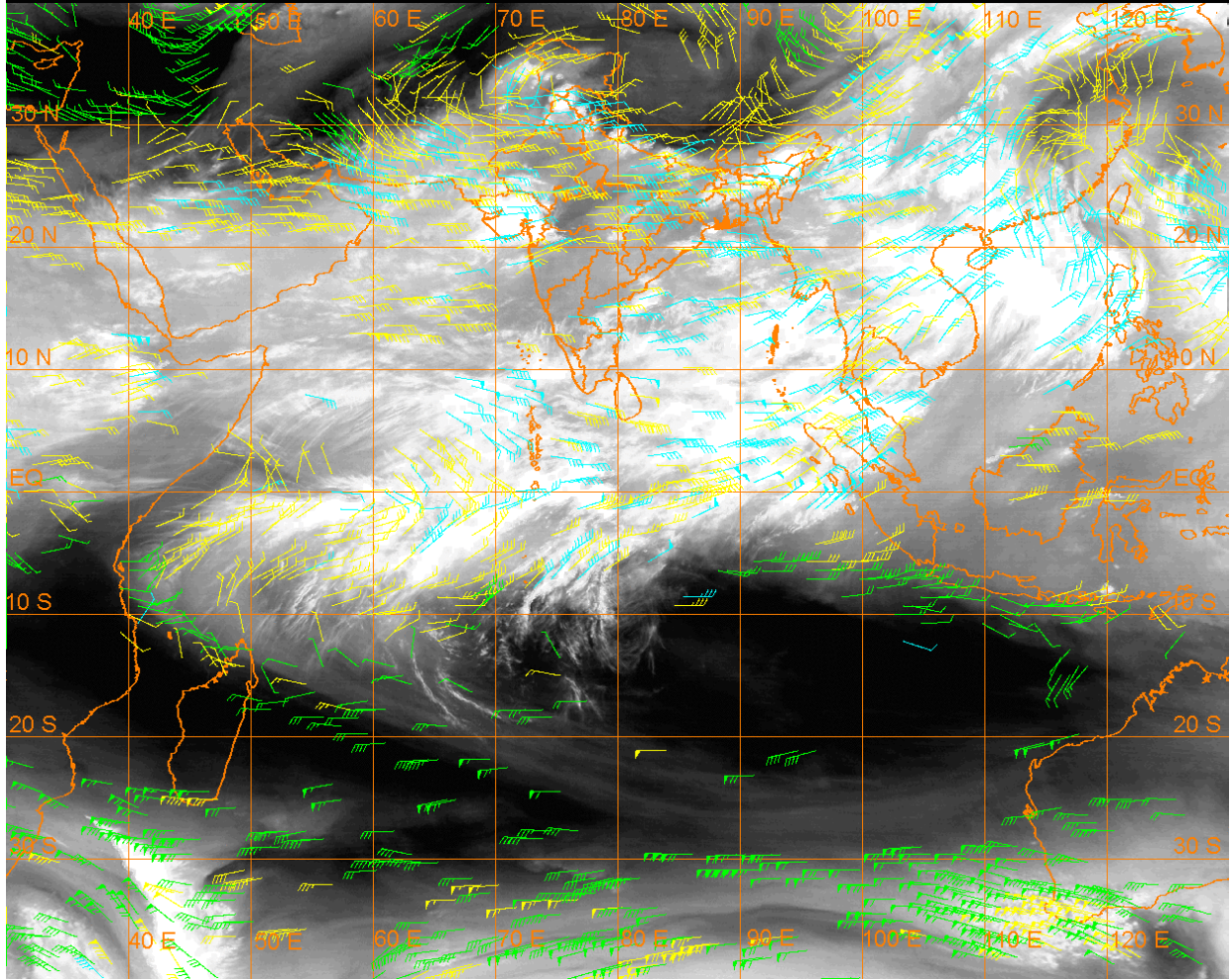
20 Kt

50 Kt

100-250 hPa

251-350 hPa

351-500 hPa



CLOUDS DESCRIPTION WITHIN INDIA:-

NORTH:-

SCT LOW/MED CLOUDS WITH EMBDD INT TO V INT CONVTN OVER J&K W HP N PJB (.) SCT LOW/MED CLOUDS WITH EMBDD MOD TO INT CONVTN OVER S UTRKND S PJB N HARY N UP AND WK TO MOD CONVTN OVER LADAKH E HP N UTRKND S HARY S UP (.)

EAST:-

SCT LOW/MED CLOUDS WITH EMBDD INT TO V INT CONVTN OVER E ORS COTL GWB MEGHA ASSAM ARUPR NAGA (.) SCT LOW/MED CLOUDS WITH EMBDD MOD TO INT CONVTN OVER NW BHR N BD AND ISOL WK TO MOD CONVTN OVER REST BHR JHRKND CHTGH W ORS REST GWB SHWB SKM MANI MIZO TRP (.)

WEST:-

SCT LOW/MED CLOUDS WITH EMBDD INT TO V INT CONVTN OVER SE RAJ EXT SW MP GUJ NORTH MADHYA MAHA (.) SCT LOW/MED CLOUDS WITH EMBDD MOD TO INT CONVTN OVER NE VID AND WK TO MOD CONVTN OVER REST RAJ REST MP REST MAHA GOA (.)

SOUTH:-

SCT LOW/MED CLOUDS WITH EMBDD INT TO V INT CONVTN OVER NICOBAR ILS (.) SCT LOW/MED CLOUDS WITH EMBDD MOD TO INT CONVTN OVER RYLSM KER N TN LKSDP ILS ANDAMAN ILS (.) SCT LOW/MED CLOUDS WITH EMBDD WK TO MOD CONVTN OVER KRNTK TLNGN COTL AP S TN (.)

ARABIAN SEA:-

SCT LOW/MED CLOUDS WITH EMBDD INT TO V INT CONVTN OVER GULF OF CAMBAY AND SE ARSEA OFF S KER COAST (.) SCT LOW/MED CLOUDS WITH EMBDD MOD TO INT CONVTN OVER REST ARSEA GULF OF KUTCH LKSDP ILS AREA MALDIVES & COMORIN AREA (.)

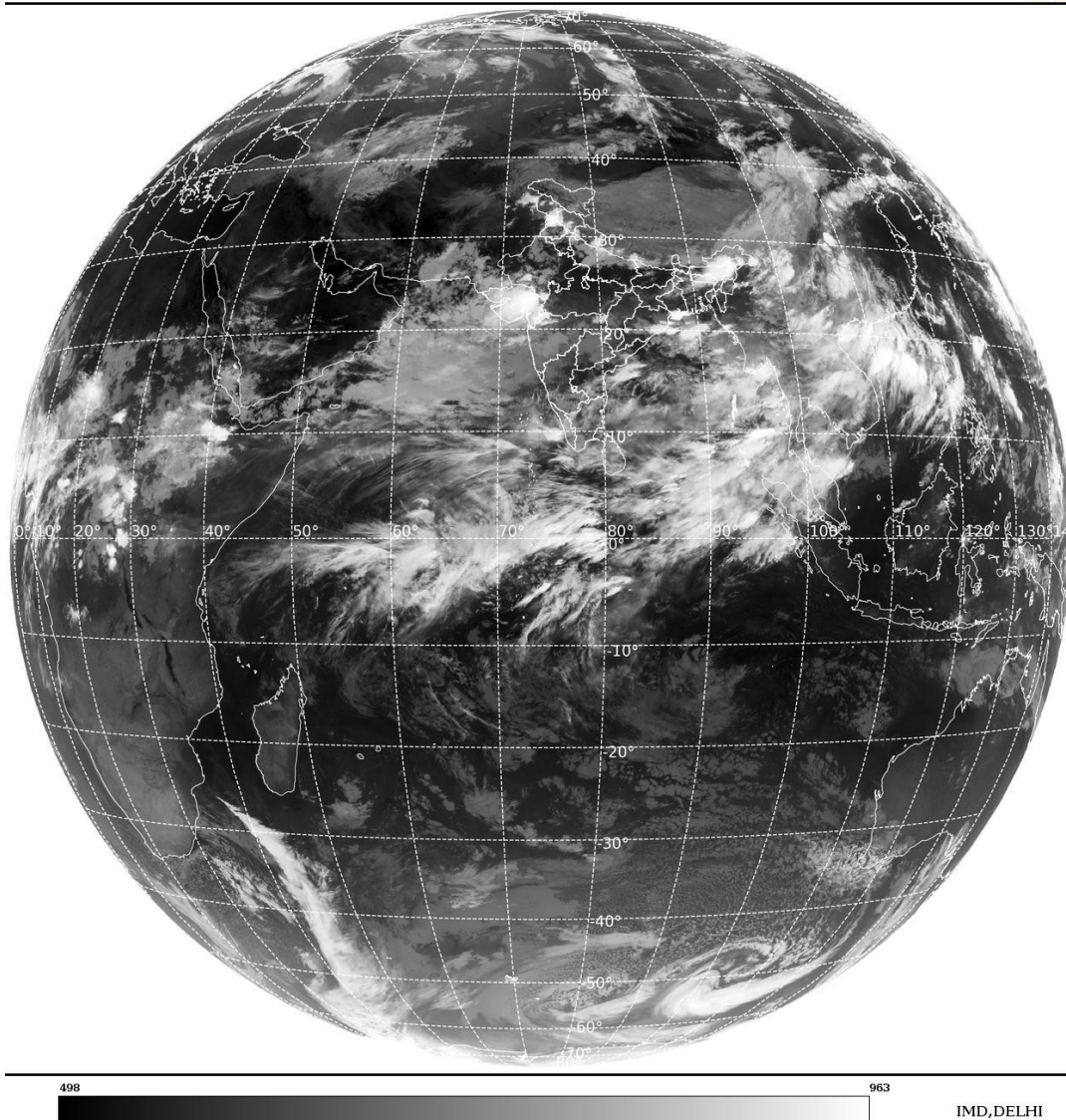
BAY OF BENGAL & ANDAMAN SEA:-

SCT LOW/MED CLOUDS WITH EMBDD INT TO V INT CONVTN OVER BAY ANDAMAN SEA TENASSERIM COAST GULF OF MARTABAN & ARAKAN COAST (.)

CLOUDS DESCRIPTION OUTSIDE INDIA:-

SAT : INSAT-3DR IMG
 Thermal Infrared1 Count 10.8 um
 L1B FULL DISK

29-07-2024/(0015 to 0042) GMT
 29-07-2024/(0545 to 0612) IST



SCT LOW/MED CLOUDS WITH EMBDD MOD TO INT CONVTN OVER SRI LANKA PALK STR GULF OF MANNAR MALDIVES PAK NEPAL BHUTAN TIBET CHINA YELLOW SEA EAST CHINA SEA TAIWAN MYANMAR THAILAND GULF OF THAILAND CAMBODIA LAOS VIETNAM GULF OF TONKIN HAINAN NORTH SUMATRA STR OF MALACCA MALAYSIA BORNEO SOUTH CHINA SEA CELEBES ILS & SEA PHILIPPINES SULU SEA AND OVER INDIAN OCEAN BET LAT 5.0N TO 10.0S LONG 50.0E TO 100.0E (.)

TOO 29/0715 HRS IST=

NNNN

LEGEND:-

REGION	NORTH	J&K HP PJB HARY DLH UP UTRKND
	EAST	BHR JHRKND CHTGH OR WB SKM NORTH- EAST STATES
	WEST	RAJ MP GUJ MAHA GOA
	SOUTH	TLNGN AP KRNTK KER TN LKSDP ANDAMAN & NICOBAR ILS
CLOUD DISTRIBUTION	ISOL	ISOLATED (LESS THAN 25%)
	SCT	SCATTERED (25 TO 50%)
	BKN	BROKEN (51 TO 75%)
	SLD	SOLID (GREATER THAN 75%)

CLOUDS TOP TEMPERATURE	CTT	CLOUD TOP TEMPERATURE
CONVECTION	WK CONV TN	WEAK CONVECTION (CTT GREATER THAN -25°C)
	MOD CONV TN	MODERATE CONVECTION (CTT BETWEEN -25°C TO -40°C)
	INT CONV TN	INTENSE CONVECTION (CTT BETWEEN -41°C TO -70°C)
	V INT CONV TN	VERY INTENSE CONVECTION (CTT LESS THAN -70°C)
METEOROLOGICAL SUB- DIVISIONS, STATES & UNION TERRITORIES	ARUPR	ARUNACHAL PRADESH
	BHR	BIHAR
	CHTGH	CHHATTISGARH
	COTL AP	COASTAL ANDHRA PRADESH
	COTL KRNTK	COASTAL KARNATAKA
	COTL ORS	COASTAL ORISSA
	GUJ	GUJARAT
	GWB	GANGETIC WEST BENGAL
	HARY	HARYANA
	DLH	DELHI
	HP	HIMACHAL PRADESH
	J&K	JAMMU AND KASHMIR
	JHRKND	JHARKHAND
	KER	KERALA
	KKN	KONKAN
	LKSDP	LAKSHADWEEP
	M MAHA	MADHYA MAHARASHTRA
	MAHA	MAHARASHTRA
	MANI	MANIPUR
	MEGHA	MEGHALAYA
	MIZO	MIZORAM
	MP	MADHYA PRADESH
	MRTHWD	MARATHWADA
	NAGA	NAGALAND
	N COTL AP	NORTH COASTAL ANDHRA PRADESH
	NIK	NORTH INTERIOR KARNATAKA
	ORS	ORISSA
	PJB	PUNJAB
	RAJ	RAJASTHAN
RYLSM	RAYALASEEMA	
SAU & KUTCH	SAURASHTRA & KUTCH	
SHWB	SUB-HIMALAYAN WEST BENGAL	
SIK	SOUTH INTERIOR KARNATAKA	
SKM	SIKKIM	
TLNGN	TELANGANA	
TN	TAMIL NADU	
TRP	TRIPURA	
UP	UTTAR PRADESH	

	UTRKND	UTTARAKHAND
	VID	VIDHARBHA
	SHWB	SUB HIMALAYAN WEST BENGAL
	GWB	GANGETIC WEST BENGAL
	ARSEA	ARABIAN SEA
	ILS	ISLANDS
MISCELLANEOUS	ASSW	IN ASSOCIATION WITH
	ASSTD	ASSOCIATED
	LLC	LOW LEVEL CIRCULATION
	EMBDD	EMBEDDED
	N/HOOD	NEIGHBOURHOOD
	EXT	EXTREME