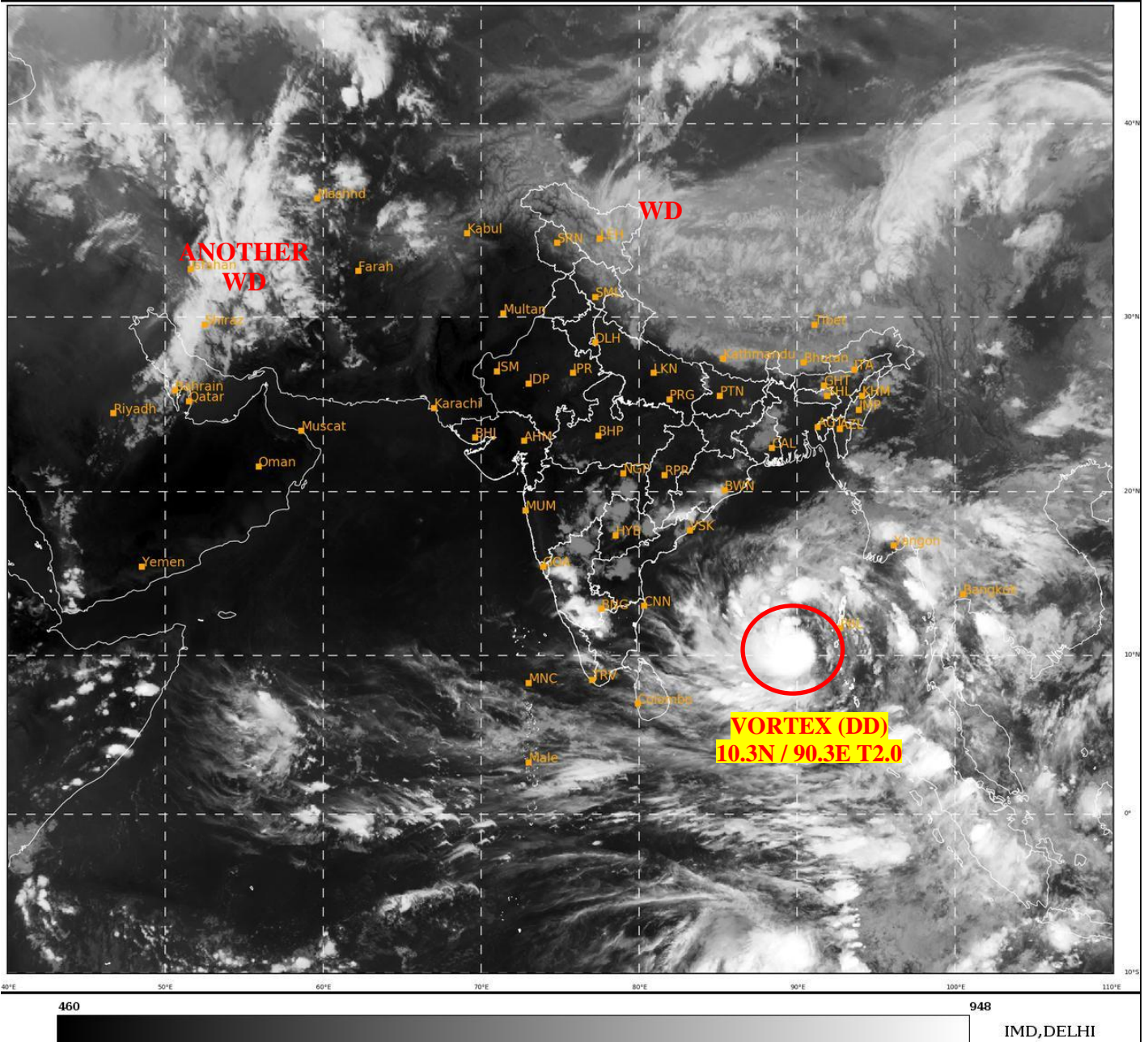




**SATELLITE BULLETIN BASED ON SATELLITE  
IMAGERIES AND PRODUCTS**  
**07.05.2022 TIME 1500 UTC**

SAT : INSAT-3D IMG  
IMG\_TIR1 10.8 um  
LIC Mercator

07-05-2022/(1500 to 1526) GMT  
07-05-2022/(2030 to 2056) IST



TCIN50 DEMS 071500

SATELLITE BULLETIN BASED ON INSAT-3D PIC OF 071500 UTC (.)

REGION COVERED BETWEEN LAT 50.0°N TO 30.0°S AND LONG 40.0°E TO 125.0°E (.)

**SALIENT FEATURES:-**

**VORTEX (DD) OVER SOUTH-EAST BAY:-**

VORTEX (DD) OVER SOUTH-EAST BAY CENTERED NEAR 10.3N / 90.3E (.) INTENSITY T2.0/2.0 (.) ASSTD BKN LOW/MED CLOUDS WITH EMBDD INTENSE TO VERY INTENSE CONVECTION OVER AREA BET LAT 7.0N TO 15.0N AND LONG 85.0E TO 92.0E & ANDAMAN ILS (.) MINIMUM CTT MINUS 93 DEG C (.) ASSTD CONVECTION ORGANISED AND INCREASED DURING PAST 03 HOURS (.)

**WESTERN DISTURBANCE (WD):-**

SCT MULTILAYERED CLOUDS OVER LADAKH TIBET ADJ CHINA IN ASSW WD OVER THE AREA (.)

SCT MULTILAYERED CLOUDS OVER CASPIAN SEA IRAN AND N/HOOD IN ASSW ANOTHER WD OVER THE AREA (.)



**THUNDERSTORM / CONVECTIVE ACTIVITY:-**

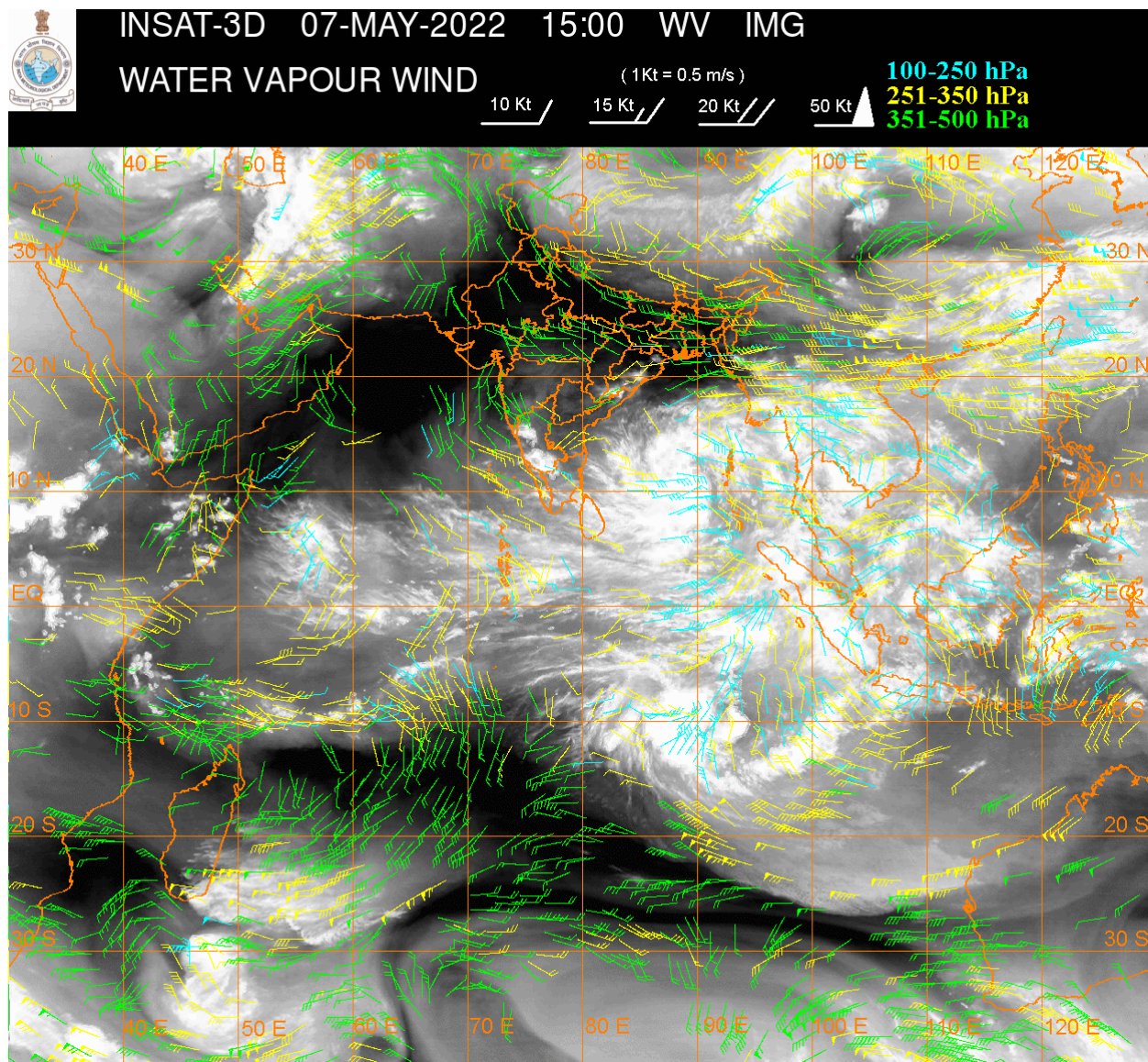
**THUNDERSTORM / CONVECTIVE ACTIVITIES OBSERVED OVER S ORS N COTL AP KRNTK ADJ NW TN ANDMAN ILS (.)**

**PRECIPITATION NOWCASTING:-**

**(BASED ON SCOPE NOWCASTING TOOL AT 1400 UTC AT A LEAD TIME OF 03 HRS (MM/HR):-**

**RAINFALL UPTO 05-10 MM LIKELY OVER S ORS N COTL AP SIK S KER W TN ANDAMAN ILS (.)**

**RAINFALL UPTO 0.25-5 MM LIKELY OVER NE ORS NICOBAR ILS (.)**



**CLOUDS DESCRIPTION WITHIN INDIA:-**

**NORTH:-**

**SCT LOW/MED CLOUDS WITH EMBDD MOD TO INT CONVTN OVER E LADAKH AND ISOL WK TO MOD CONVTN OVER W LADAKH HP UTRKND ADJ NW UP (.) ISOL TO SCT LOW/MED CLOUDS OVER J&K E UP (.)**

**EAST:-**

**SCT LOW/MED CLOUDS WITH EMBDD MOD TO INT CONVTN OVER S ORS AND WK TO MOD CONVTN OVER NE ORS S CHTGH GWB SKM ARUPR N ASSAM E MEGHA NAGA MANI (.) ISOL TO SCT LOW/MED CLOUDS OVER N CHTGH REST ORS JHRKND BHR SHWB REST NE STATES (.)**

**WEST:-**

**SCT LOW/MED CLOUDS WITH EMBDD WK TO MOD CONVTN OVER SW MP MRTHWD VID (.) SCT LOW/MED CLOUDS OVER E RAJ S GUJ REST MAHA GOA (.)**

**SOUTH:-**

**SCT LOW/MED WITH EMBDD INT TO V INT CONVTN OVER SIK ADJ NW TN ANDAMAN ILS AND MOD TO INT CONVTN OVER N COTL AP NIK S KER S TN NICOBAR ILS (.) SCT LOW/MED CLOUDS WITH EMBDD ISOL WK TO MOD CONVTN OVER TLNGN RYLSM N KER (.) SCT LOW/MED CLOUDS OVER S COTL AP REST TN LKSDP ILS (.)**

**ARABIAN SEA:-**

SCT LOW/MED WITH EMBDD ISOL MOD TO INT CONVTN OVER SOUTH ARSEA SOUTH OF LAT 10.0N (.)

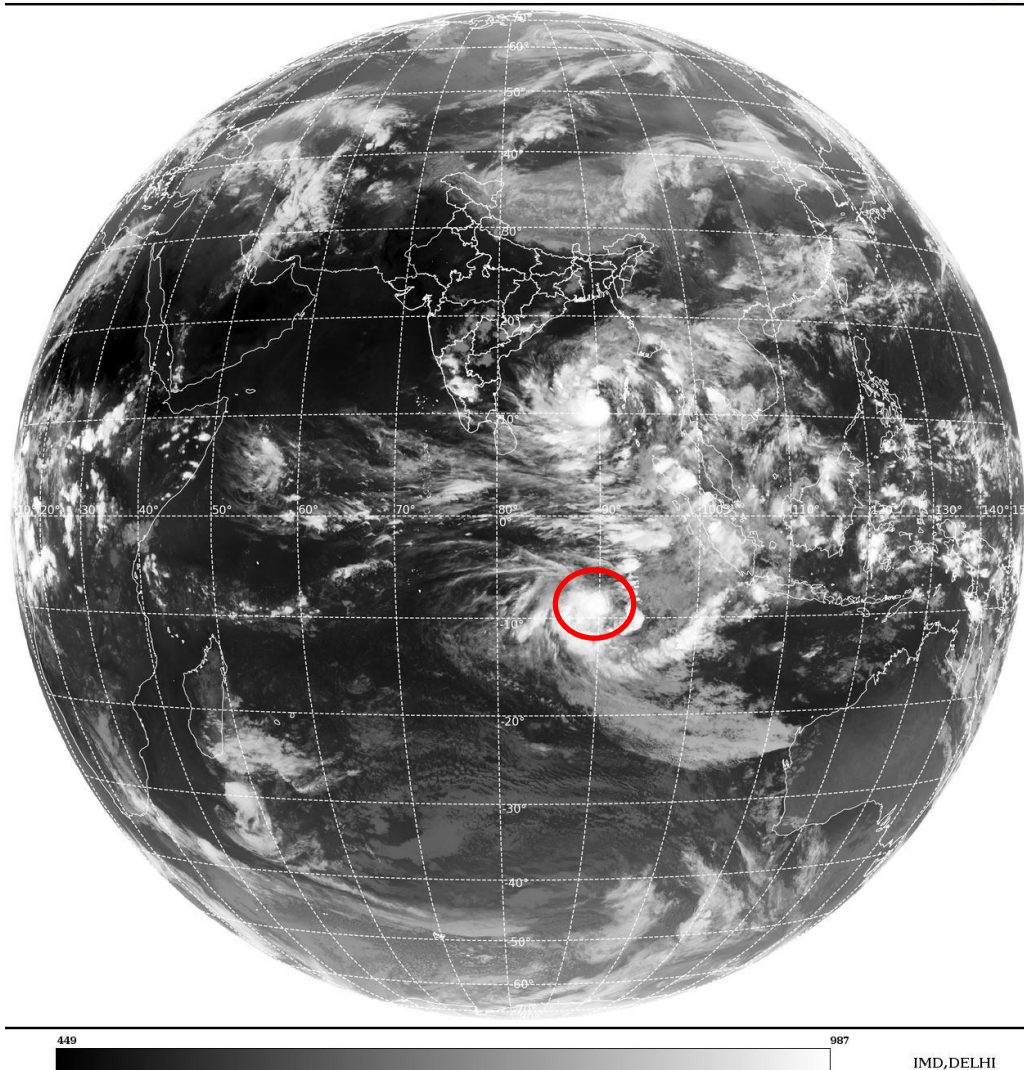
**BAY OF BENGAL & ANDAMAN SEA:-**

SCT TO BKN LOW/MED CLOUDS WITH EMBDD INT TO V INT CONVTN OVER EC & SE BAY & ANDAMAN SEA (.) SCT LOW/MED CLOUDS WITH EMBDD MOD TO INT CONVTN OVER SW ADJ WC BAY (.)

**CLOUDS DESCRIPTION OUTSIDE INDIA:-**

SAT : INSAT-3D IMG  
Thermal Infrared1 Count 10.8 um  
L1B FULL DISK

07-05-2022/(1500 to 1526) GMT  
07-05-2022/(2030 to 2056) IST



**VORTEX OVER SOUTH INDIAN OCEAN:-**

VORTEX OVER SOUTH INDIAN OCEAN CENTERED NEAR **8.6S / 90.2E** (.) INTENSITY **T2.5/2.5** (.) ASSTD BKN LOW/MED CLOUDS WITH EMBDD INT TO V INT CONVTN OVER AREA BET LAT 6.0S TO 14.0S LONG 83.0E TO 93.0E (.)

SCT LOW/MED CLOUDS WITH EMBDD MOD TO INT CONVTN OVER SRI LANKA MALDIVES TIBET CHINA S MYANMAR THAILAND GULF OF THAILAND CAMBODIA LAOS VIETNAM HAINAN TAIWAN SUMATRA STR OF MALACCA MALAYSIA BORNEO SOUTH CHINA SEA S PHILIPPINES YELLOW SEA EAST CHINA SEA AND OVER INDIAN OCEAN BET LAT 5.0N TO 20.0S LONG 53.0E TO 110.0E (.)

TOO 07/2130 HRS IST=

NNNN



**LEGEND:-**

<b>REGION</b>	<b>NORTH</b>	<b>J&amp;K HP PJB HARY DLH UP UTRKND</b>
	<b>EAST</b>	<b>BHR JHRKND CHTGH OR WB SKM NORTH- EAST STATES</b>
	<b>WEST</b>	<b>RAJ MP GUJ MAHA GOA</b>
	<b>SOUTH</b>	<b>TLNGN AP KRNTK KER TN LKSDP ANDAMAN &amp; NICOBAR ILS</b>

<b>CLOUD DISTRIBUTION</b>	<b>ISOL</b>	<b>ISOLATED (LESS THAN 25%)</b>
	<b>SCT</b>	<b>SCATTERED (25 TO 50%)</b>
	<b>BKN</b>	<b>BROKEN (51 TO 75%)</b>
	<b>SLD</b>	<b>SOLID (GREATER THAN 75%)</b>
<b>CLOUDS TOP TEMPERATURE</b>	<b>CTT</b>	<b>CLOUD TOP TEMPERATURE</b>
<b>CONVECTION</b>	<b>WK CONVTN</b>	<b>WEAK CONVECTION (CTT GREATER THAN -25°C)</b>
	<b>MOD CONVTN</b>	<b>MODERATE CONVECTION (CTT BETWEEN -25°C TO -40°C)</b>
	<b>INT CONVTN</b>	<b>INTENSE CONVECTION (CTT BETWEEN -41°C TO -70°C)</b>
	<b>V INT CONVTN</b>	<b>VERY INTENSE CONVECTION (CTT LESS THAN -70°C)</b>
<b>METEOROLOGICAL SUB-DIVISIONS, STATES &amp; UNION TERRITORIES</b>	<b>ARUPR</b>	<b>ARUNACHAL PRADESH</b>
	<b>BHR</b>	<b>BIHAR</b>
	<b>CHTGH</b>	<b>CHHATTISGARH</b>
	<b>COTL AP</b>	<b>COASTAL ANDHRA PRADESH</b>
	<b>COTL KRNTK</b>	<b>COASTAL KARNATAKA</b>
	<b>COTL ORS</b>	<b>COASTAL ORISSA</b>
	<b>GUJ</b>	<b>GUJARAT</b>
	<b>GWB</b>	<b>GANGETIC WEST BENGAL</b>
	<b>HARY</b>	<b>HARYANA</b>
	<b>DLH</b>	<b>DELHI</b>
	<b>HP</b>	<b>HIMACHAL PRADESH</b>
	<b>J&amp;K</b>	<b>JAMMU AND KASHMIR</b>
	<b>JHRKND</b>	<b>JHARKHAND</b>
	<b>KER</b>	<b>KERALA</b>
	<b>KKN</b>	<b>KONKAN</b>
	<b>LKSDP</b>	<b>LAKSHADWEEP</b>
	<b>M MAHA</b>	<b>MADHYA MAHARASHTRA</b>
	<b>MAHA</b>	<b>MAHARASHTRA</b>
	<b>MANI</b>	<b>MANIPUR</b>
	<b>MEGHA</b>	<b>MEGHALAYA</b>
	<b>MIZO</b>	<b>MIZORAM</b>
	<b>MP</b>	<b>MADHYA PRADESH</b>
	<b>MRTHWD</b>	<b>MARATHWADA</b>
	<b>NAGA</b>	<b>NAGALAND</b>

	<b>N COTL AP</b>	<b>NORTH COASTAL ANDHRA PRADESH</b>
	<b>NIK</b>	<b>NORTH INTERIOR KARNATAKA</b>
	<b>ORS</b>	<b>ORISSA</b>
	<b>PJB</b>	<b>PUNJAB</b>
	<b>RAJ</b>	<b>RAJASTHAN</b>
	<b>RYLSM</b>	<b>RAYALASEEMA</b>
	<b>SAU &amp; KUTCH</b>	<b>SAURASHTRA &amp; KUTCH</b>
	<b>SHWB</b>	<b>SUB-HIMALAYAN WEST BENGAL</b>
	<b>SIK</b>	<b>SOUTH INTERIOR KARNATAKA</b>
	<b>SKM</b>	<b>SIKKIM</b>
	<b>TLNGN</b>	<b>TELANGANA</b>
	<b>TN</b>	<b>TAMIL NADU</b>
	<b>TRP</b>	<b>TRIPURA</b>
	<b>UP</b>	<b>UTTAR PRADESH</b>
	<b>UTRKN</b>	<b>UTTARAKHAND</b>
	<b>VID</b>	<b>VIDHARBHA</b>
	<b>SHWB</b>	<b>SUB HIMALAYAN WEST BENGAL</b>
	<b>GWB</b>	<b>GANGETIC WEST BENGAL</b>
	<b>ARSEA</b>	<b>ARABIAN SEA</b>
	<b>ILS</b>	<b>ISLANDS</b>
<b>MISCELLANEOUS</b>	<b>ASSW</b>	<b>IN ASSOCIATION WITH</b>
	<b>ASSTD</b>	<b>ASSOCIATED</b>
	<b>LLC</b>	<b>LOW LEVEL CIRCULATION</b>
	<b>EMBDD</b>	<b>EMBEDDED</b>
	<b>N/HOOD</b>	<b>NEIGHBOURHOOD</b>
	<b>EXT</b>	<b>EXTREME</b>