



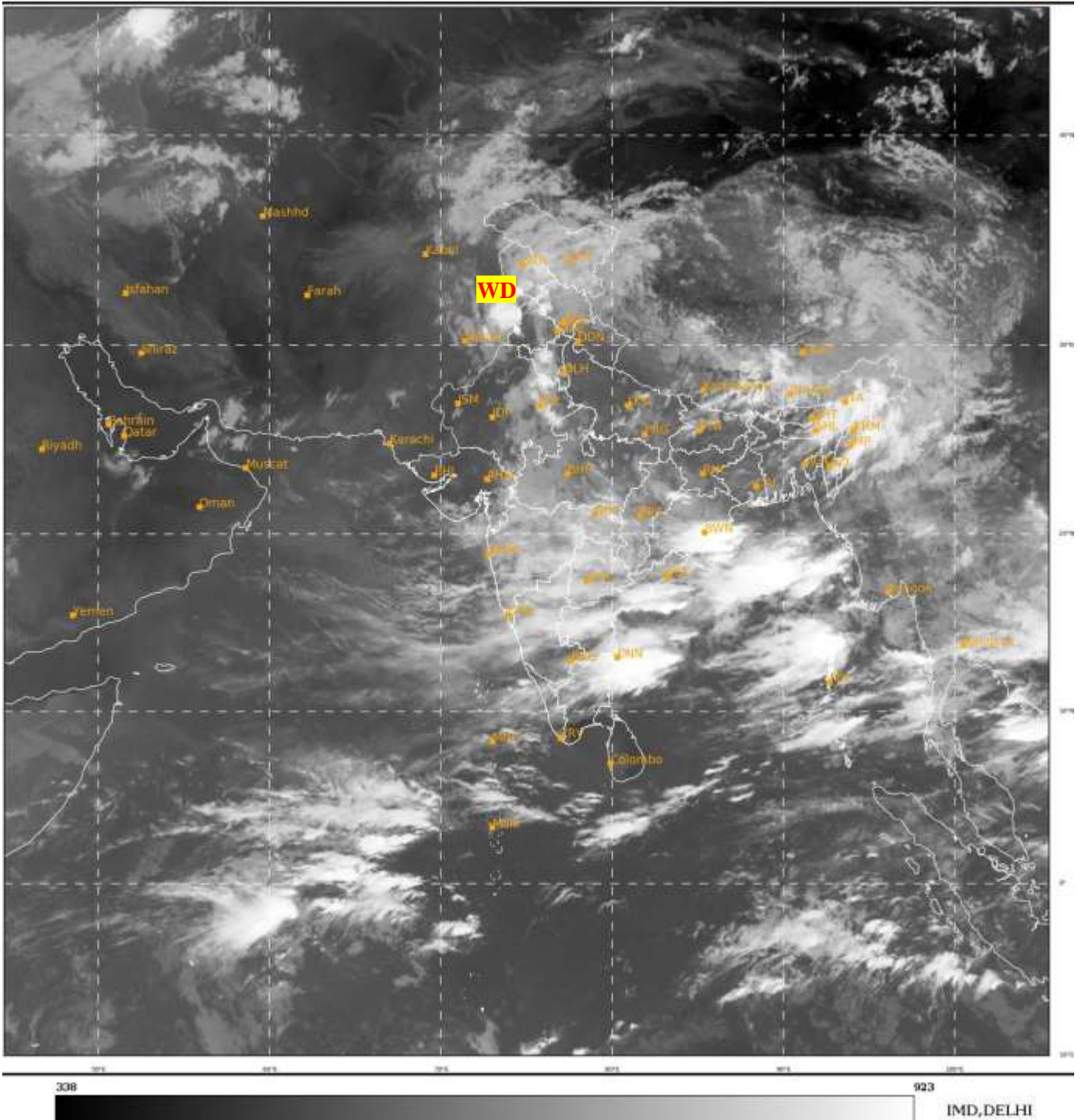
भारत मौसम विज्ञान विभाग  
पृथ्वी विज्ञान मंत्रालय  
India Meteorological Department  
Ministry of Earth Sciences



**SATELLITE BULLETIN BASED ON SATELLITE  
IMAGERIES AND PRODUCTS**  
**16.07.2023 TIME 0300 UTC**

SAT : INSAT-3D IMG  
IMG\_TIR1 10.8 um  
LIC Mercator

16-07-2023/(0300 to 0326) GMT  
16-07-2023/(0830 to 0856) IST



TCIN50 DEMS 160300

SATELLITE BULLETIN BASED ON INSAT-3D PIC OF 160300 UTC (.)

REGION COVERED BETWEEN LAT 50.0°N TO 35.0°S AND LONG 40.0°E TO 125.0°E (.)

**SALIENT FEATURES:-**

**WESTERN DISTURBANCE (WD):-**

SCT TO BKN MULTILAYERED CLOUDS OVER N PAK LADAKH J&K HP UTRKND PJB HARY  
ADJ N RAJ & N/HOOD IN ASSW **WD** OVER THE AREA (.)

**THUNDERSTORM / CONVECTIVE ACTIVITY:-**

INTENSE THUNDERSTORM / CONVECTIVE ACTIVITY OBSERVED OVER PJB COTL ORS  
NORTH COTL TN & ANDAMAN ILS (.)





INSAT-3D 16-JUL-2023 03:00 WV IMG

WATER VAPOUR WIND

(1Kt = 0.5 m/s)

10 Kt

15 Kt

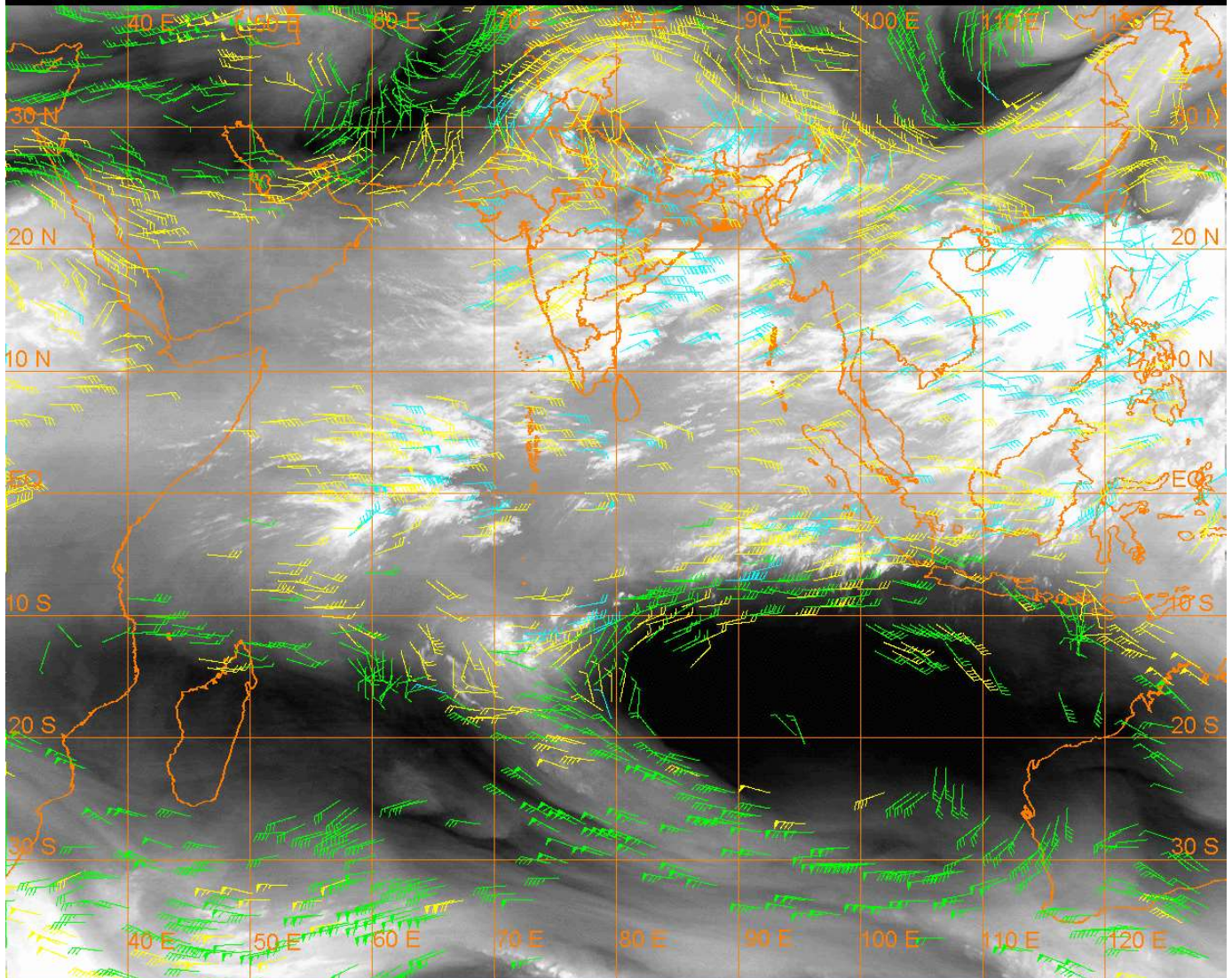
20 Kt

50 Kt

100-250 hPa

251-350 hPa

351-500 hPa



#### CLOUDS DESCRIPTION WITHIN INDIA:-

##### NORTH:-

SCT LOW/MED CLOUDS WITH EMBDD ISOL INT TO V INT CONVTN OVER PJB ADJ N PAK (MINIMUM **CTT MINUS 72** DEG CEL) (.) SCT LOW/MED CLOUDS WITH EMBDD MOD TO INT CONVTN OVER J&K NW HP HARY AND WK TO MOD CONVTN OVER LADAKH REST HP E UP (.) SCT TO BKN LOW/MED CLOUDS OVER UTRKND W UP DLH (.)

##### EAST:-

SCT TO BKN LOW/MED CLOUDS WITH EMBDD INT TO V INT CONVTN OVER COTL ORS (MINIMUM **CTT MINUS 90** DEG CEL) (.) SCT TO BKN LOW/MED CLOUDS WITH EMBDD MOD TO INT CONVTN OVER CHTGH REST ORS N BHR SHWB SKM NE STATES BD AND ISOL WK TO MOD CONVTN OVER S BHR JHRKND GWB (.)

##### WEST:-

SCT LOW/MED CLOUDS WITH EMBDD MOD TO INT CONVTN OVER NE RAJ MAHA AND WK TO MOD CONVTN OVER NW & SE RAJ S GUJ MP & GOA (.) SCT LOW/MED CLOUDS OVER SW RAJ (.)

##### SOUTH:-

SCT LOW/MED CLOUDS WITH EMBDD INT TO V INT CONVTN OVER N COTL TN ANDAMAN ILS (MINIMUM **CTT MINUS 80** DEG CEL) (.) (.) SCT TO BKN LOW/MED CLOUDS WITH EMBDD MOD TO INT CONVTN OVER TLNGN RYLSMA COTL AP KRNTK REST N TN & NICOBAR ILS (.) SCT LOW/MED CLOUDS WITH EMBDD WK TO MOD CONVTN OVER KER & LKSDP ILS (.) SCT LOW/MED CLOUDS OVER S TN (.)

##### ARABIAN SEA:-

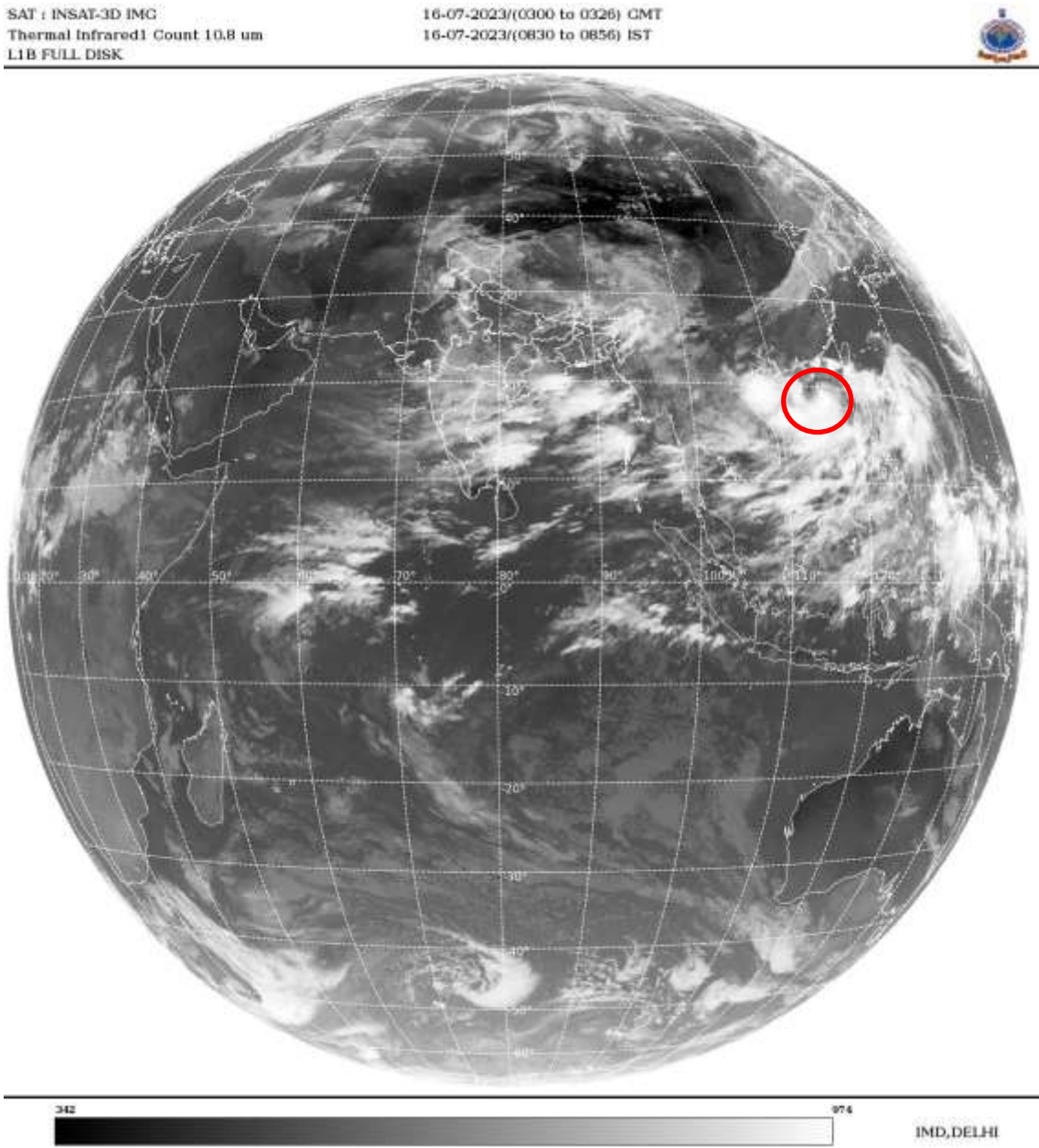
SCT LOW/MED CLOUDS WITH EMBDD WK TO MOD CONVTN OVER EAST ARSEA GULF OF CAMBAY & LKSDP ILS AREA (.)



**BAY OF BENGAL & ANDAMAN SEA:-**

SCT TO BKN LOW/MED CLOUDS WITH EMBDD INT TO V INT CONVTN OVER NORTH & CENTRAL BAY (.) SCT LOW/MED CLOUDS WITH EMBDD MOD TO INT CONVTN OVER S BAY ANDAMAN SEA (.)

**CLOUDS DESCRIPTION OUTSIDE INDIA:-**



**VORTEX OVER SOUTH CHINA SEA:-**

VORTEX (**TALIM**) OVER SOUTH CHINA SEA (**AREA F05**) CENTERED NEAR **18.8N /115.8E** (.) INTENSITY **T3.0/3.0** (.) CORRESPONDING MAXIMUM SUSTAINED WINDS OF **34-47 KTS** (.) ASSTD BKN LOW/MED CLOUDS WITH EMBDD INT TO V INT CONVTN OVER AREA BET LAT 14.0N TO 22.0N LONG 112.0E TO 118.0E (.)

SCT LOW/MED CLOUDS WITH EMBDD MOD TO INT CONVTN OVER N MALDIVES N PAK E NEPAL BHUTAN TIBET CHINA MYANMAR THAILAND GULF OF THAILAND CAMBODIA LAOS VIETNAM HAINAN MALAYSIA BORNEO SOUTH CHINA SEA CELEBES ILS & SEA PHILIPPINES YELLOW SEA AND OVER INDIAN OCEAN BET LAT 5.0N TO 7.0S LONG 50.0E TO 100.0E AND BET LAT 9.0S TO 15.0S LONG 70.0E TO 80.0E (.)

TOO 16/0940 HRS IST=

NNNN

LEGEND:-

|        |       |  |
|--------|-------|--|
| REGION | NORTH | J&K HP PJB HARY DLH UP UTRKND                        |
|        | EAST  | BHR JHRKND CHTGH OR WB SKM<br>NORTH- EAST STATES     |
|        | WEST  | RAJ MP GUJ MAHA GOA                                  |
|        | SOUTH | TLNGN AP KRNTK KER TN LKSDP<br>ANDAMAN & NICOBAR ILS |

|   |              |   |
|---|--------------|---|
| CLOUD DISTRIBUTION  | ISOL         | ISOLATED (LESS THAN 25%)                            |
|   | SCT          | SCATTERED (25 TO 50%)                               |
|   | BKN          | BROKEN (51 TO 75%)                                  |
|   | SLD          | SOLID (GREATER THAN 75%)                            |
| CLOUDS TOP TEMPERATURE  | CTT          | CLOUD TOP TEMPERATURE                               |
| CONVECTION  | WK CONVTN    | WEAK CONVECTION<br>(CTT GREATER THAN -25°C)         |
|   | MOD CONVTN   | MODERATE CONVECTION<br>(CTT BETWEEN -25°C TO -40°C) |
|   | INT CONVTN   | INTENSE CONVECTION<br>(CTT BETWEEN -41°C TO -70°C)  |
|   | V INT CONVTN | VERY INTENSE CONVECTION<br>(CTT LESS THAN -70°C)    |
| METEOROLOGICAL<br>SUB- DIVISIONS,<br>STATES & UNION<br>TERITORIES | ARUPR        | ARUNACHAL PRADESH                                   |
|   | BHR          | BIHAR   |
|   | CHTGH        | CHHATTISGARH  |
|   | COTL AP      | COASTAL ANDHRA PRADESH                              |
|   | COTL KRNTK   | COASTAL KARNATAKA                                   |
|   | COTL ORS     | COASTAL ORISSA                                      |
|   | GUJ          | GUJARAT   |
|   | GWB          | GANGETIC WEST BENGAL                                |
|   | HARY         | HARYANA   |
|   | DLH          | DELHI   |
|   | HP           | HIMACHAL PRADESH                                    |
|   | J&K          | JAMMU AND KASHMIR                                   |
|   | JHRKND       | JHARKHAND   |
|   | KER          | KERALA  |
|   | KKN          | KONKAN  |
|   | LKSDP        | LAKSHADWEEP   |
|   | M MAHA       | MADHYA MAHARASHTRA                                  |
|   | MAHA         | MAHARASHTRA   |
|   | MANI         | MANIPUR   |
|   | MEGHA        | MEGHALAYA   |
|   | MIZO         | MIZORAM   |
|   | MP           | MADHYA PRADESH                                      |
|   | MRTHWD       | MARATHWADA  |
|   | NAGA         | NAGALAND  |
|   | N COTL AP    | NORTH COASTAL ANDHRA<br>PRADESH                     |

|                      |                        |                                  |
|----------------------|------------------------|----------------------------------|
|                      | <b>NIK</b>             | <b>NORTH INTERIOR KARNATAKA</b>  |
|                      | <b>ORS</b>             | <b>ORISSA</b>                    |
|                      | <b>PJB</b>             | <b>PUNJAB</b>                    |
|                      | <b>RAJ</b>             | <b>RAJASTHAN</b>                 |
|                      | <b>RYLSM</b>           | <b>RAYALASEEMA</b>               |
|                      | <b>SAU &amp; KUTCH</b> | <b>SAURASHTRA &amp; KUTCH</b>    |
|                      | <b>SHWB</b>            | <b>SUB-HIMALAYAN WEST BENGAL</b> |
|                      | <b>SIK</b>             | <b>SOUTH INTERIOR KARNATAKA</b>  |
|                      | <b>SKM</b>             | <b>SIKKIM</b>                    |
|                      | <b>TLNGN</b>           | <b>TELANGANA</b>                 |
|                      | <b>TN</b>              | <b>TAMIL NADU</b>                |
|                      | <b>TRP</b>             | <b>TRIPURA</b>                   |
|                      | <b>UP</b>              | <b>UTTAR PRADESH</b>             |
|                      | <b>UTRKND</b>          | <b>UTTARAKHAND</b>               |
|                      | <b>VID</b>             | <b>VIDHARBHA</b>                 |
|                      | <b>SHWB</b>            | <b>SUB HIMALAYAN WEST BENGAL</b> |
|                      | <b>GWB</b>             | <b>GANGETIC WEST BENGAL</b>      |
|                      | <b>ARSEA</b>           | <b>ARABIAN SEA</b>               |
|                      | <b>ILS</b>             | <b>ISLANDS</b>                   |
| <b>MISCELLANEOUS</b> | <b>ASSW</b>            | <b>IN ASSOCIATION WITH</b>       |
|                      | <b>ASSTD</b>           | <b>ASSOCIATED</b>                |
|                      | <b>LLC</b>             | <b>LOW LEVEL CIRCULATION</b>     |
|                      | <b>EMBDD</b>           | <b>EMBEDDED</b>                  |
|                      | <b>N/HOOD</b>          | <b>NEIGHBOURHOOD</b>             |
|                      | <b>EXT</b>             | <b>EXTREME</b>                   |