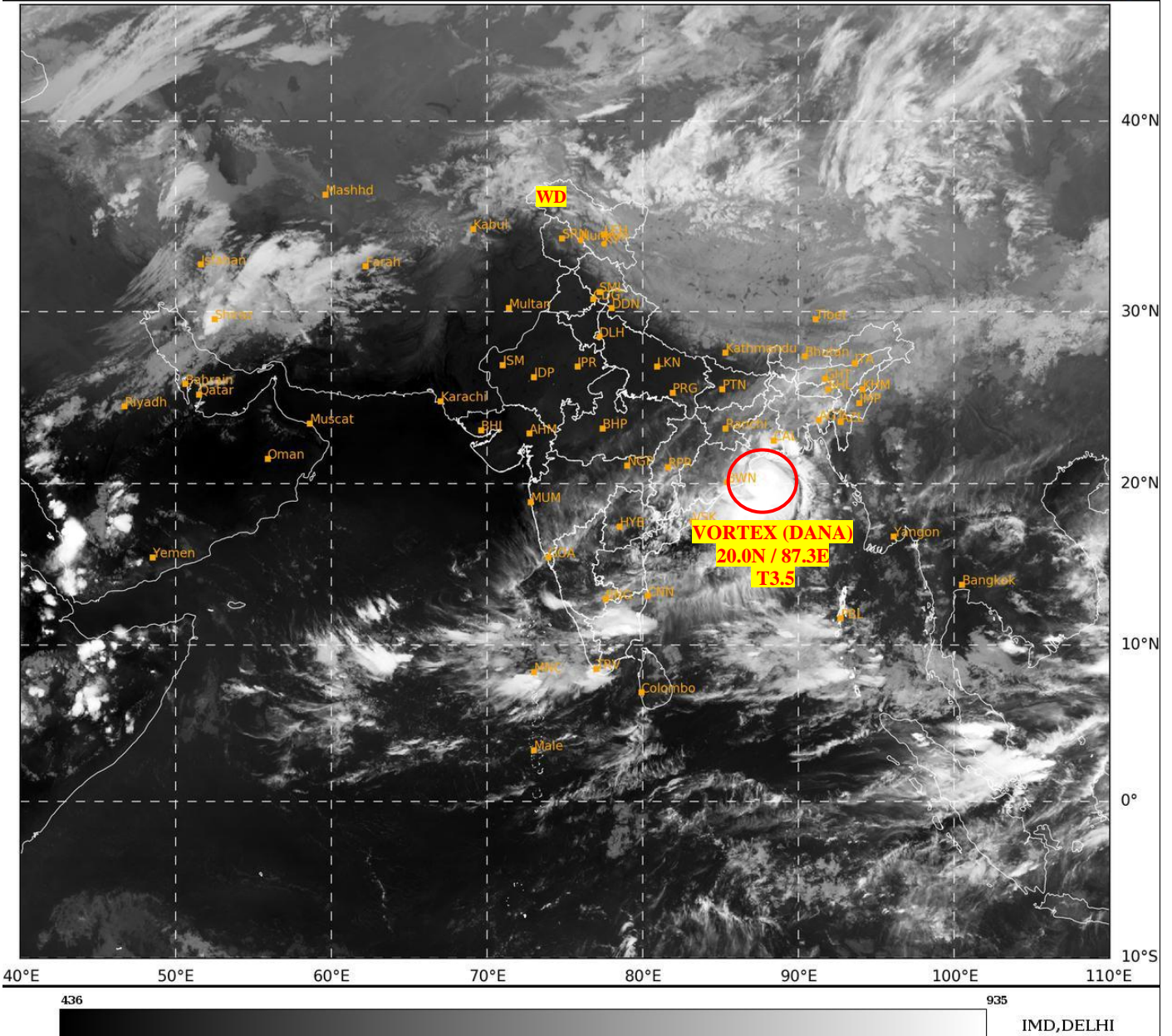




**SATELLITE BULLETIN BASED ON SATELLITE
IMAGERIES AND PRODUCTS**
24.10.2024 TIME 1500 UTC

SAT : INSAT-3DR IMG
IMG_TIR1 10.8 um
LIC Mercator

24-10-2024/(1415 to 1442) GMT
24-10-2024/(1945 to 2012) IST



TCIN50 DEMS 241500

SATELLITE BULLETIN BASED ON INSAT-3DR PIC OF 241415 UTC (.)

REGION COVERED BETWEEN LAT 50.0°N TO 35.0°S AND LONG 40.0°E TO 125.0°E (.)

SALIENT FEATURES:-

VORTEX (DANA) OVER NORTH-WEST BAY:-

VORTEX (DANA) OVER NW BAY CENTERED NEAR 20.0N / 87.3E (.) INTENSITY T3.5 (.) ASSTD BKN LOW/MED CLOUDS WITH EMBDD INT TO V INT CONVTN OVER NW ADJ WC BAY BET LAT 17.0N TO 22.0N AND LONG 84.0E TO 90.0E (MINIMUM CTT MINUS 93 DEG CEL) AND MOD TO INT CONVTN OVER ORS GWB & S BD (.)

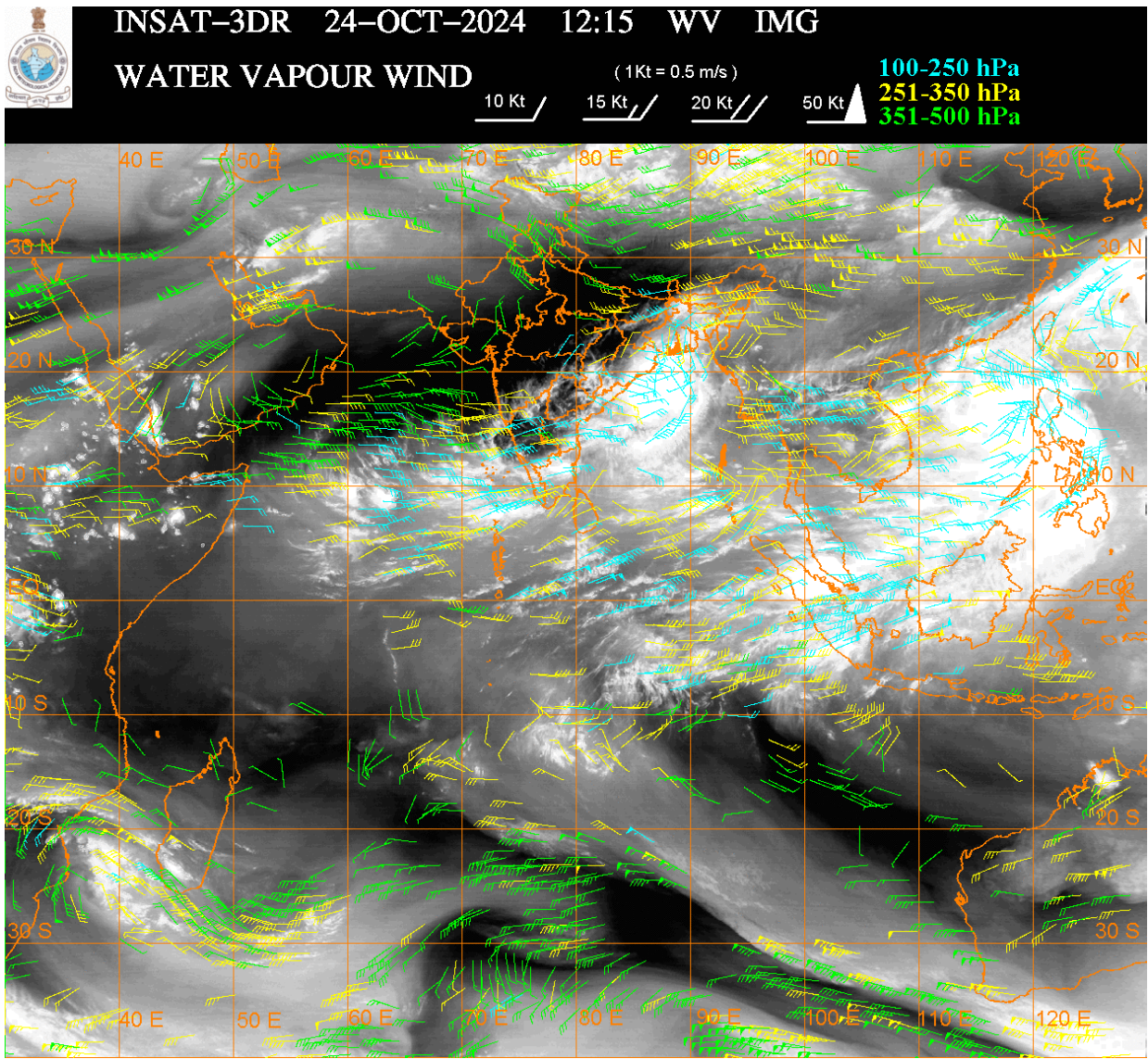
WESTERN DISTURBANCE:-

SCT MULTILAYERED CLOUDS OVER EXT N PAK LADAKH & N/HOOD IN ASSW WD OVER THE AREA (.)

CONVECTIVE / THUNDERSTORM ACTIVITY:-

INTENSE TO VERY INTENSE CONVECTIVE / THUNDERSTORM ACTIVITY OBSERVED OVER TN (MINIMUM CTT MINUS 70-80 DEG CEL) (.)

MODERATE TO INTENSE CONVECTIVE / THUNDERSTORM ACTIVITY OBSERVED OVER LADAKH S CHTGH ORS GWB MEGHA S ASSAM TRP KRNTK COTL AP KER LKSDP ILS ANDAMAN & NICOBAR ILS (MINIMUM **CTT MINUS 50-70 DEG CEL) (.)**



CLOUDS DESCRIPTION WITHIN INDIA:-

NORTH:-

SCT LOW/MED CLOUDS WITH EMBDD MOD TO INT CONVTN OVER LADAKH AND ISOL WK CONVTN OVER SE UP (.) ISOL LOW/MED CLOUDS OVER J&K HP UTRKND SW UP (.)

EAST:-

SCT LOW/MED CLOUDS WITH EMBDD MOD TO INT OVER S CHTGH ORS GWB MEGHA S ASSAM TRP & BD (.) SCT LOW/MED CLOUDS WITH EMBDD WK TO MOD CONVTN OVER BHR JHRKND N CHTGH SHWB SKM REST NE STATES (.)

WEST:-

SCT LOW/MED CLOUDS WITH EMBDD ISOL WK TO MOD CONVTN OVER E MP MAHA GOA (.) ISOL LOW/MED CLOUDS OVER SE RAJ W MP GUJ (.)

SOUTH:-

SCT LOW/MED CLOUDS WITH EMBDD INT TO V INT CONVTN OVER TN (.) SCT LOW/MED CLOUDS WITH EMBDD MOD TO INT CONVTN OVER KRNTK COTL AP KER LKSDP ILS ANDAMAN & NICOBAR ILS AND WK TO MOD CONVTN OVER TLNGN RYLSM (.)

ARABIAN SEA:-

SCT LOW/MED CLOUDS WITH EMBDD MOD TO INT CONVTN OVER EC ARSEA SOUTH ARSEA LKSDP ILS AREA MALDIVES & COMORIN AREA (.)

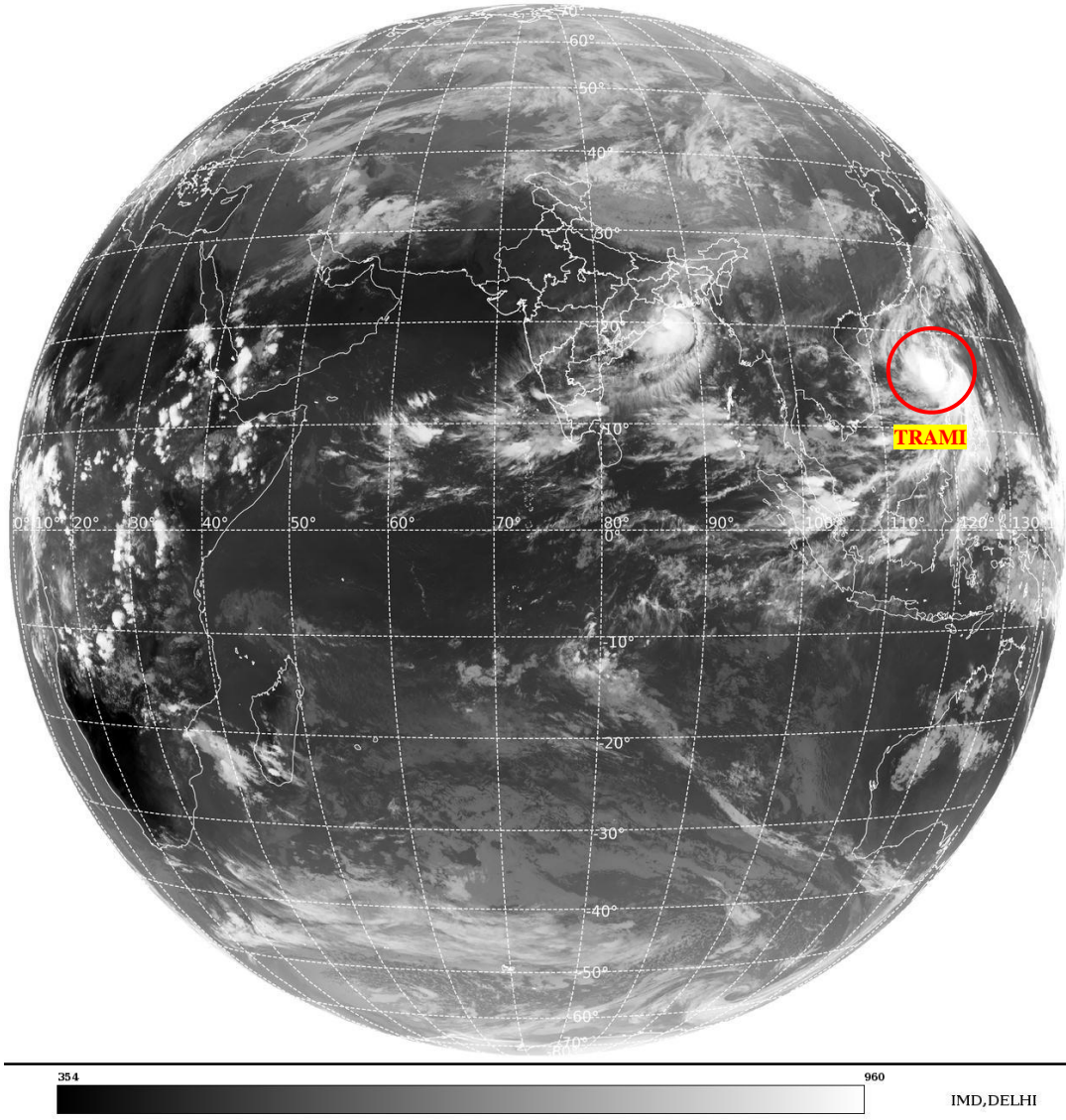
BAY OF BENGAL & ANDAMAN SEA:-

BKN LOW/MED CLOUDS WITH EMBDD INT TO V INT CONVTN OVER NW BAY (MINIMUM **CTT MINUS 85-93 DEG CEL) (.) SCT LOW/MED CLOUDS WITH EMBDD MOD TO INT CONVTN OVER REST BAY & ANDAMAN SEA (.)**

CLOUDS DESCRIPTION OUTSIDE INDIA:-

SAT : INSAT-3DR IMG
Thermal Infrared1 Count 10.8 um
L1B FULL DISK

24-10-2024/(1415 to 1442) GMT
24-10-2024/(1945 to 2012) IST



VORTEX (TRAMI) OVER SOUTH CHINA SEA & N/HOOD:-

VORTEX (TRAMI) OVER SOUTH CHINA SEA (AREA F05) CENTERED NEAR 17.5N / 118.5E (.) INTENSITY T2.5 (.) MAXIMUM SUSTAINED WINDS OF 34 – 47 KTS (.) ASSTD BKN LOW/MED CLOUDS WITH EMBDD INT TO V INT CONVTN OVER AREA BET LAT 12.0N TO 18.0N LONG 115.0E TO 125.0E & PHILIPPINES (.)

SCT LOW/MED CLOUDS WITH EMBDD MOD TO INT CONVTN OVER SRI LANKA PALK STR GULF OF MANNAR MALDIVES TIBET CHINA EAST CHINA SEA MYANMAR THAILAND GULF OF THAILAND CAMBODIA LAOS VIETNAM GULF OF TONKIN HAINAN TAIWAN SUMATRA STR OF MALACCA MALAYSIA BORNEO SOUTH CHINA SEA JAVA ILS & SEA PHILIPPINES SULU SEA SOUTH MOZAMBIQUE CHANNEL AND OVER INDIAN OCEAN BET LAT 5.0N TO 25.0S LONG 60.0E TO 105.0E (.)

TOO 24/2150 HRS IST=

NNNN

LEGEND:-

REGION	NORTH	J&K HP PJB HARY DLH UP UTRKND
	EAST	BHR JHRKND CHTGH ORS WB SKM NORTH- EAST STATES
	WEST	RAJ MP GUJ MAHA GOA
	SOUTH	TLNGN AP KRNTK KER TN LKSDP

		ANDAMAN & NICOBAR ILS
CLOUD DISTRIBUTION	ISOL	ISOLATED (LESS THAN 25%)
	SCT	SCATTERED (25 TO 50%)
	BKN	BROKEN (51 TO 75%)
	SLD	SOLID (GREATER THAN 75%)
CLOUDS TOP TEMPERATURE	CTT	CLOUD TOP TEMPERATURE
CONVECTION	WK CONVTN	WEAK CONVECTION (CTT GREATER THAN -25°C)
	MOD CONVTN	MODERATE CONVECTION (CTT BETWEEN -25°C TO -40°C)
	INT CONVTN	INTENSE CONVECTION (CTT BETWEEN -41°C TO -70°C)
	V INT CONVTN	VERY INTENSE CONVECTION (CTT LESS THAN -70°C)
METEOROLOGICAL SUB- DIVISIONS, STATES & UNION TERRITORIES	ARUPR	ARUNACHAL PRADESH
	BHR	BIHAR
	CHTGH	CHHATTISGARH
	COTL AP	COASTAL ANDHRA PRADESH
	COTL KRNTK	COASTAL KARNATAKA
	COTL ORS	COASTAL ORISSA
	GUJ	GUJARAT
	GWB	GANGETIC WEST BENGAL
	HARY	HARYANA
	DLH	DELHI
	HP	HIMACHAL PRADESH
	J&K	JAMMU AND KASHMIR
	JHRKND	JHARKHAND
	KER	KERALA
	KKN	KONKAN
	LKSDP	LAKSHADWEEP
	M MAHA	MADHYA MAHARASHTRA
	MAHA	MAHARASHTRA
	MANI	MANIPUR
	MEGHA	MEGHALAYA
	MIZO	MIZORAM
MP	MADHYA PRADESH	
	MRTHWD	MARATHWADA
	NAGA	NAGALAND
	N COTL AP	NORTH COASTAL ANDHRA PRADESH
	NIK	NORTH INTERIOR KARNATAKA
	ORS	ORISSA
	PJB	PUNJAB
	RAJ	RAJASTHAN
	RYLSM	RAYALASEEMA
	SAU & KUTCH	SAURASHTRA & KUTCH
	SHWB	SUB-HIMALAYAN WEST BENGAL

	SIK	SOUTH INTERIOR KARNATAKA
	SKM	SIKKIM
	TLNGN	TELANGANA
	TN	TAMIL NADU
	TRP	TRIPURA
	UP	UTTAR PRADESH
	UTRKND	UTTARAKHAND
	VID	VIDHARBHA
	SHWB	SUB HIMALAYAN WEST BENGAL
	GWB	GANGETIC WEST BENGAL
	ARSEA	ARABIAN SEA
	ILS	ISLANDS
MISCELLANEOUS	ASSW	IN ASSOCIATION WITH
	ASSTD	ASSOCIATED
	LLC	LOW LEVEL CIRCULATION
	EMBDD	EMBEDDED
	N/HOOD	NEIGHBOURHOOD
	EXT	EXTREME