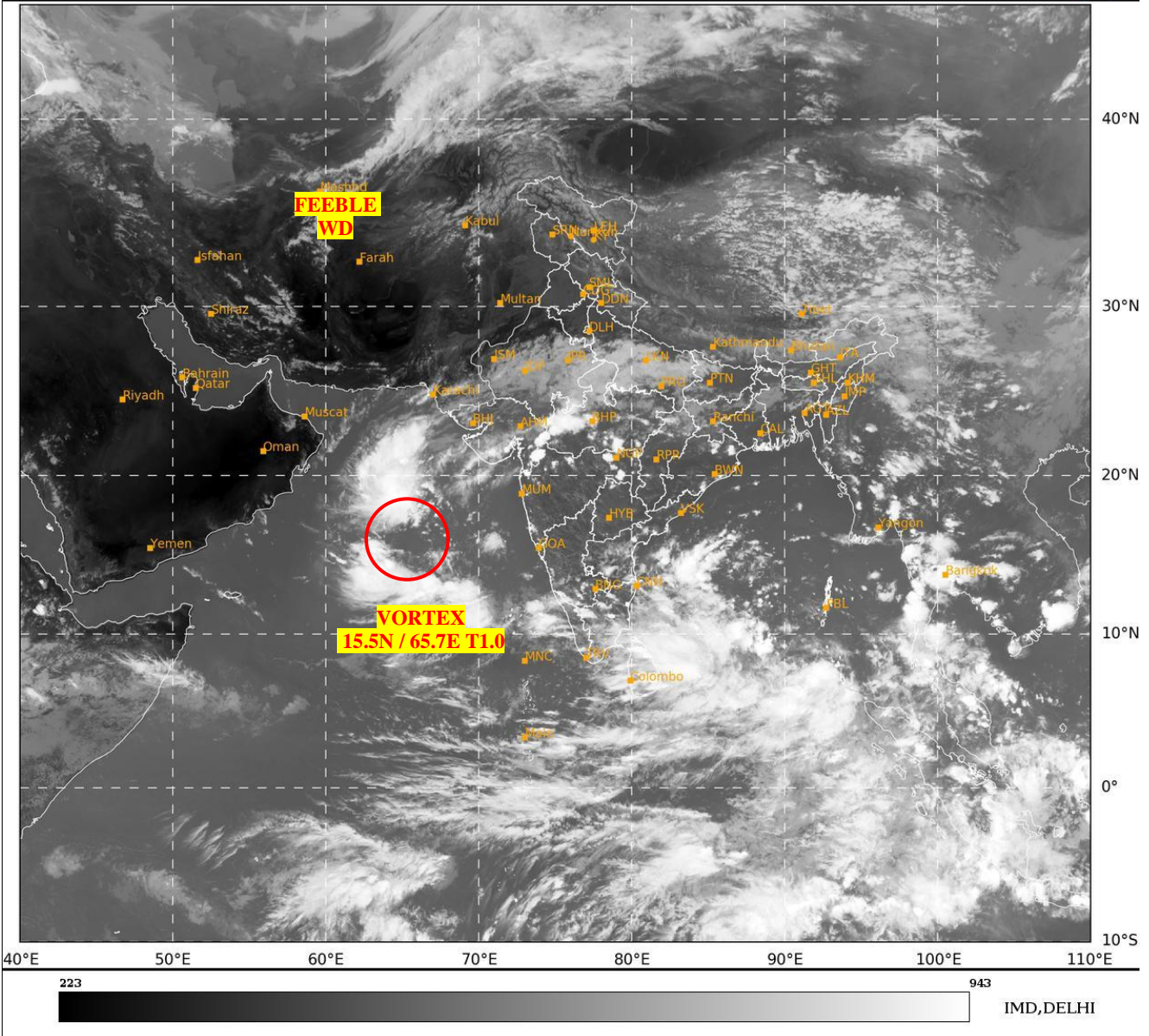




**SATELLITE BULLETIN BASED ON SATELLITE
IMAGERIES AND PRODUCTS**
13.10.2024 TIME 0900 UTC

SAT : INSAT-3DR IMG
IMG_TIR1 10.8 um
LIC Mercator

13-10-2024/(0845 to 0912) GMT
13-10-2024/(1415 to 1442) IST



TCIN50 DEMS 130900

SATELLITE BULLETIN BASED ON INSAT-3DR PIC OF 130845 UTC (.)

REGION COVERED BETWEEN LAT 50.0°N TO 35.0°S AND LONG 40.0°E TO 125.0°E (.)

SALIENT FEATURES:-

VORTEX OVER CENTRAL PARTS OF CENTRAL ARABIAN SEA:-

VORTEX OVER CENTRAL PARTS OF CENTRAL ARSEA CENTERED WITHIN HALF A DEGREE OF **15.5N / 65.7E** (.) INTENSITY **T1.0** (.) ASSTD SCT TO BKN LOW/MED CLOUDS WITH EMBDD INT TO V INT CONVTN OVER ARSEA BET LAT 10.0N TO 23.0N LONG 60.0E TO 72.0E (MIMIMUM **CTT MINUS 80-90** DEG CEL) (.)

CONVECTION OVER SOUTH BAY:-

SCT TO BKN LOW/MED CLOUDS WITH EMBDD INT TO V INT CONVTN OVER WC BAY SOUTH BAY ADJ EQUATORIAL INDIAN OCEAN (MIMIMUM **CTT MINUS 80-93** DEG CEL) (.)

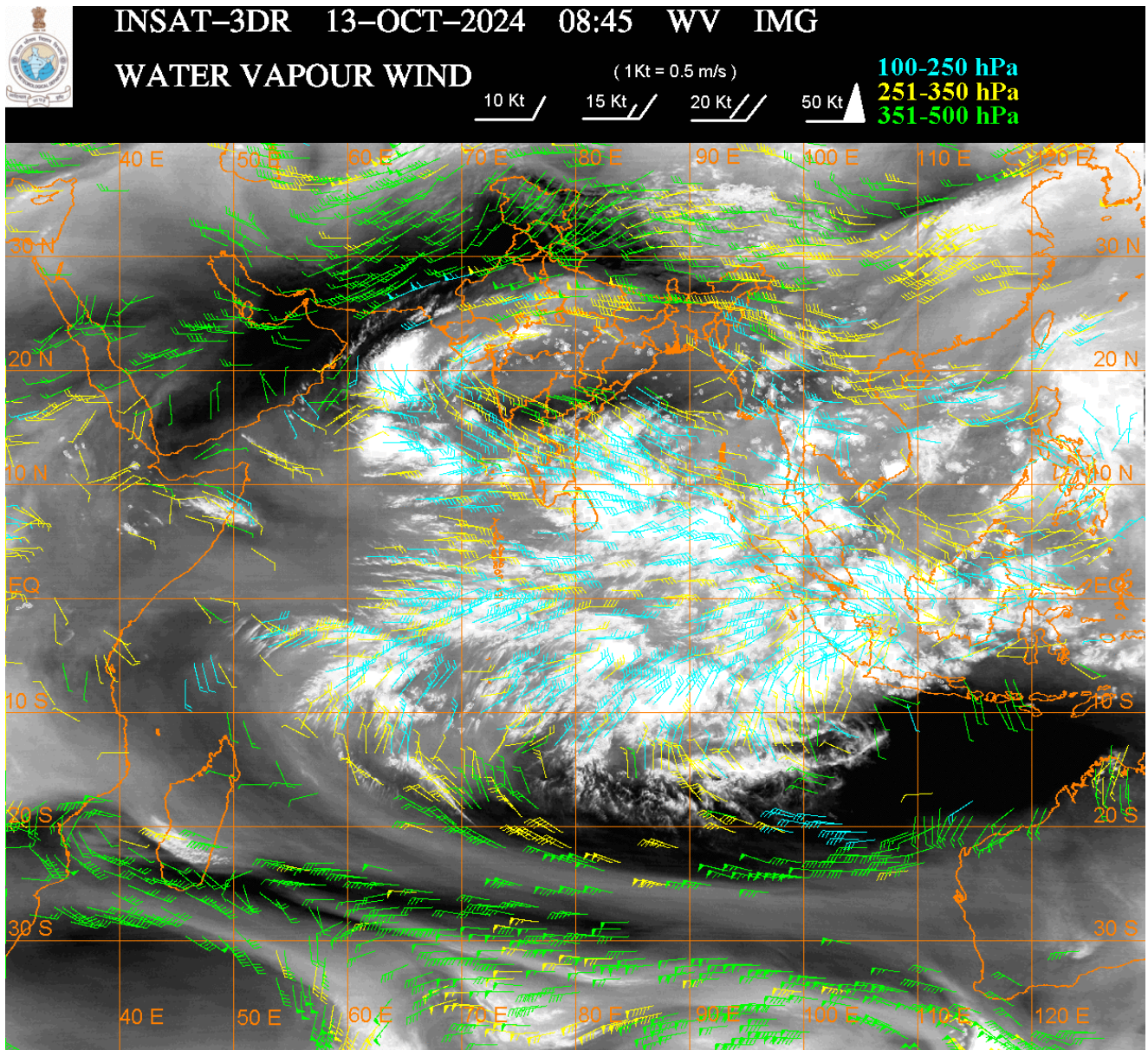
FEEBLE WESTERN DISTURBANCE(FEEBLE WD):-

SCT MULTILAYERED CLOUDS OVER E IRAN AFGAN & N/HOOD IN ASSW **FEEBLE WD** OVER THE AREA (.)

CONVECTIVE / THUNDERSTORM ACTIVITY:-

INTENSE TO VERY INTENSE CONVECTIVE / THUNDERSTORM ACTIVITY OBSERVED OVER MP S GUJ VID N MADHYA MAHA TN LKSDP ILS ANDAMAN & NICOBAR ILS (MINIMUM CTT MINUS 70-90 DEG CEL) (.)

MODERATE TO INTENSE CONVECTIVE / THUNDERSTORM ACTIVITY OBSERVED OVER ORS CHTGH N GUJ S KKN SIK KER TN RYLSM COTL AP LKSDP ILS & NICOBAR ILS (MINIMUM CTT MINUS 50-70 DEG CEL) (.)



CLOUDS DESCRIPTION WITHIN INDIA:-

NORTH:-

**SCT LOW/MED CLOUDS WITH EMBDD WK TO MOD CONVTN OVER LADAKH UP S HARY (.)
SCT LOW/MED CLOUDS OVER J&K HP UTRKND N HARY DLH (.)**

EAST:-

**SCT LOW/MED CLOUDS WITH EMBDD ISOL MOD TO INT CONVTN OVER ORS CHTGH (.) SCT
LOW/MED CLOUDS WITH EMBDD WK TO MOD CONVTN OVER BHR JHRKND GWB SHWB SKM
NE STATES & BD (.)**

WEST:-

**SCT LOW/MED CLOUDS WITH EMBDD INT TO V INT CONVTN OVER MP S GUJ VID N MADHYA
MAHA (.) SCT LOW/MED CLOUDS WITH EMBDD MOD TO INT CONVTN OVER N GUJ S KKN (.)
SCT LOW/MED CLOUDS WITH EMBDD WK TO MOD CONVTN OVER RAJ GOA (.)**

SOUTH:-

**SCT TO BKN LOW/MED CLOUDS WITH EMBDD MOD TO INT CONVTN OVER SIK KER TN
RYLSM COTL AP LKSDP ILS & NICOBAR ILS (.) SCT LOW/MED CLOUDS WITH EMBDD WK TO
MOD CONVTN OVER REST KRNTK N TLNGN (.) SCT LOW/MED CLOUDS OVER S TLNGN
ANDAMAN ILS (.)**

ARABIAN SEA:-

SCT LOW/MED CLOUDS WITH EMBDD INT TO V INT CONVTN OVER NORTH ARSEA CENTRAL ADJ SE ARSEA & LKSDP ILS AREA (MINIMUM CTT MINUS 70-90 DEG CEL) (.) SCT LOW/MED CLOUDS WITH EMBDD MOD TO INT CONVTN OVER SOUTH ARSEA MALDIVES & COMORIN AREA (.)

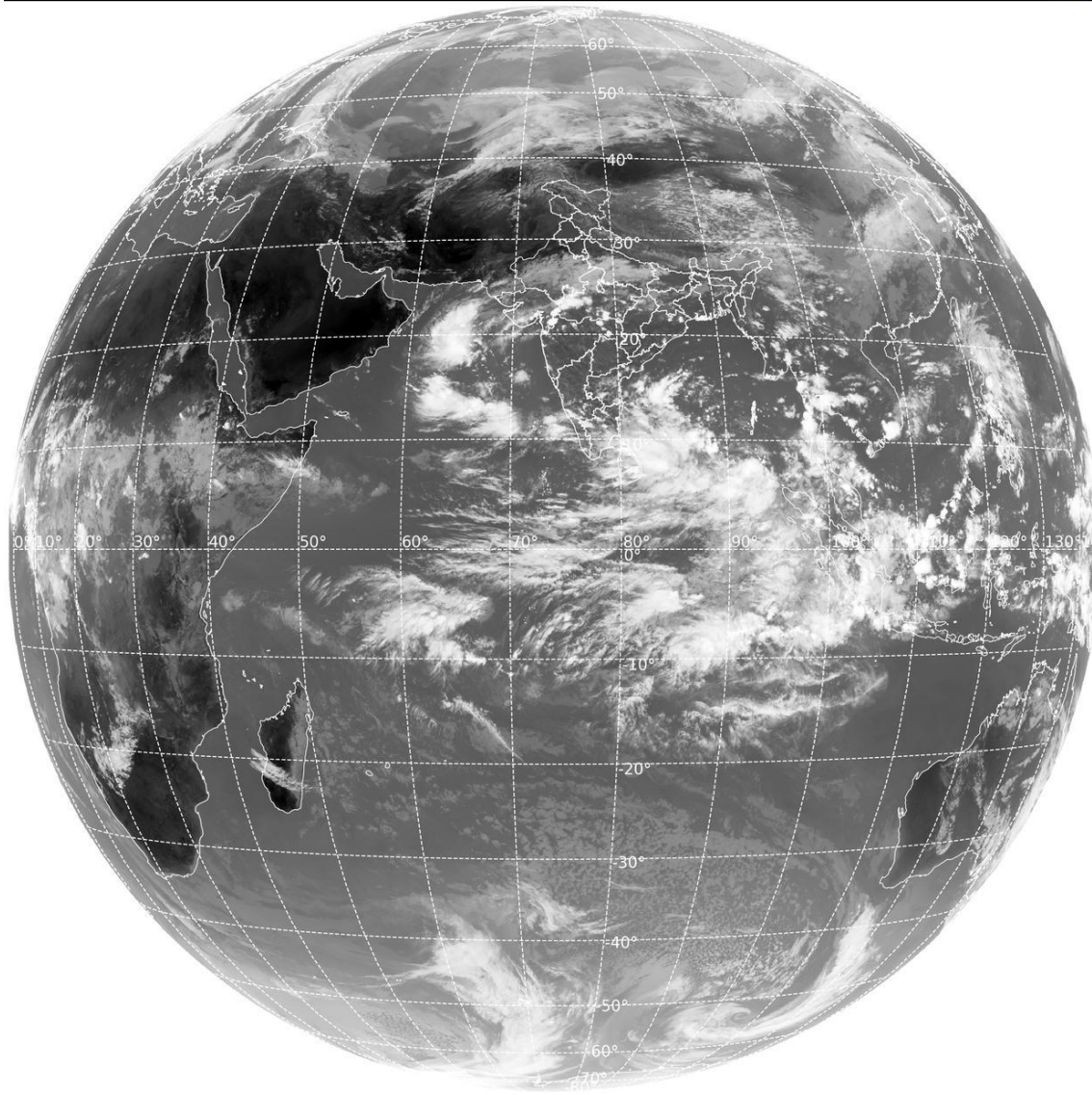
BAY OF BENGAL & ANDAMAN SEA:-

SCT TO BKN LOW/MED CLOUDS WITH EMBDD INT TO V INT CONVTN OVER WC BAY SOUTH BAY ADJ EQUATORIAL INDIAN OCEAN ANDAMAN SEA & TENASSERIM COAST (MINIMUM CTT MINUS 80-93 DEG CEL) (.) SCT LOW/MED CLOUDS WITH EMBDD ISOL MOD TO INT CONVTN OVER REST BAY (.)

CLOUDS DESCRIPTION OUTSIDE INDIA:-

SAT : INSAT-3DR IMG
Thermal Infrared1 Count 10.8 um
L1B FULL DISK

13-10-2024/(0845 to 0912) GMT
13-10-2024/(1415 to 1442) IST



224

943

IMD,DELHI

SCT LOW/MED CLOUDS WITH EMBDD MOD TO INT CONVTN OVER SRI LANKA PALK STR GULF OF MANNAR MALDIVES TIBET CHINA MYANMAR THAILAND GULF OF THAILAND CAMBODIA LAOS VIETNAM SUMATRA STR OF MALACCA MALAYSIA BORNEO SOUTH CHINA SEA JAVA ILS & SEA CELEBES ILS & SEA PHILIPPINES YELLOW SEA AND OVER INDIAN OCEAN BET LAT 5.0N TO 20.0S LONG 50.0E TO 105.0E (.)

TOO 13/1520 HRS IST=

NNNN

LEGEND:-

REGION	NORTH	J&K HP PJB HARY DLH UP UTRKND	
	EAST	BHR JHRKND CHTGH ORS WB SKM NORTH- EAST STATES	
	WEST	RAJ MP GUJ MAHA GOA	
	SOUTH	TLNGN AP KRNTK KER TN LKSDP ANDAMAN & NICOBAR ILS	
CLOUD DISTRIBUTION	ISOL	ISOLATED (LESS THAN 25%)	
	SCT	SCATTERED (25 TO 50%)	
	BKN	BROKEN (51 TO 75%)	
	SLD	SOLID (GREATER THAN 75%)	
CLOUDS TOP TEMPERATURE	CTT	CLOUD TOP TEMPERATURE	
CONVECTION	WK CONV TN	WEAK CONVECTION (CTT GREATER THAN -25°C)	
	MOD CONV TN	MODERATE CONVECTION (CTT BETWEEN -25°C TO -40°C)	
	INT CONV TN	INTENSE CONVECTION (CTT BETWEEN -41°C TO -70°C)	
	V INT CONV TN	VERY INTENSE CONVECTION (CTT LESS THAN -70°C)	
METEOROLOGICAL SUB- DIVISIONS, STATES & UNION TERITORIES	ARUPR	ARUNACHAL PRADESH	
	BHR	BIHAR	
	CHTGH	CHHATTISGARH	
	COTL AP	COASTAL ANDHRA PRADESH	
	COTL KRNTK	COASTAL KARNATAKA	
	COTL ORS	COASTAL ORISSA	
	GUJ	GUJARAT	
	GWB	GANGETIC WEST BENGAL	
	HARY	HARYANA	
	DLH	DELHI	
	HP	HIMACHAL PRADESH	
	J&K	JAMMU AND KASHMIR	
	JHRKND	JHARKHAND	
	KER	KERALA	
	KKN	KONKAN	
	LKSDP	LAKSHADWEEP	
	M MAHA	MADHYA MAHARASHTRA	
	MAHA	MAHARASHTRA	
	MANI	MANIPUR	
	MEGHA	MEGHALAYA	
	MIZO	MIZORAM	
	MP	MADHYA PRADESH	
		MRTHWD	MARATHWADA
		NAGA	NAGALAND
N COTL AP		NORTH COASTAL ANDHRA PRADESH	
NIK		NORTH INTERIOR KARNATAKA	

	ORS	ORISSA
	PJB	PUNJAB
	RAJ	RAJASTHAN
	RYLSM	RAYALASEEMA
	SAU & KUTCH	SAURASHTRA & KUTCH
	SHWB	SUB-HIMALAYAN WEST BENGAL
	SIK	SOUTH INTERIOR KARNATAKA
	SKM	SIKKIM
	TLNGN	TELANGANA
	TN	TAMIL NADU
	TRP	TRIPURA
	UP	UTTAR PRADESH
	UTRKND	UTTARAKHAND
	VID	VIDHARBHA
	SHWB	SUB HIMALAYAN WEST BENGAL
	GWB	GANGETIC WEST BENGAL
	ARSEA	ARABIAN SEA
	ILS	ISLANDS
MISCELLANEOUS	ASSW	IN ASSOCIATION WITH
	ASSTD	ASSOCIATED
	LLC	LOW LEVEL CIRCULATION
	EMBDD	EMBEDDED
	N/HOOD	NEIGHBOURHOOD
	EXT	EXTREME